

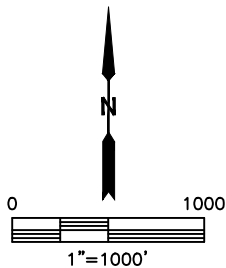
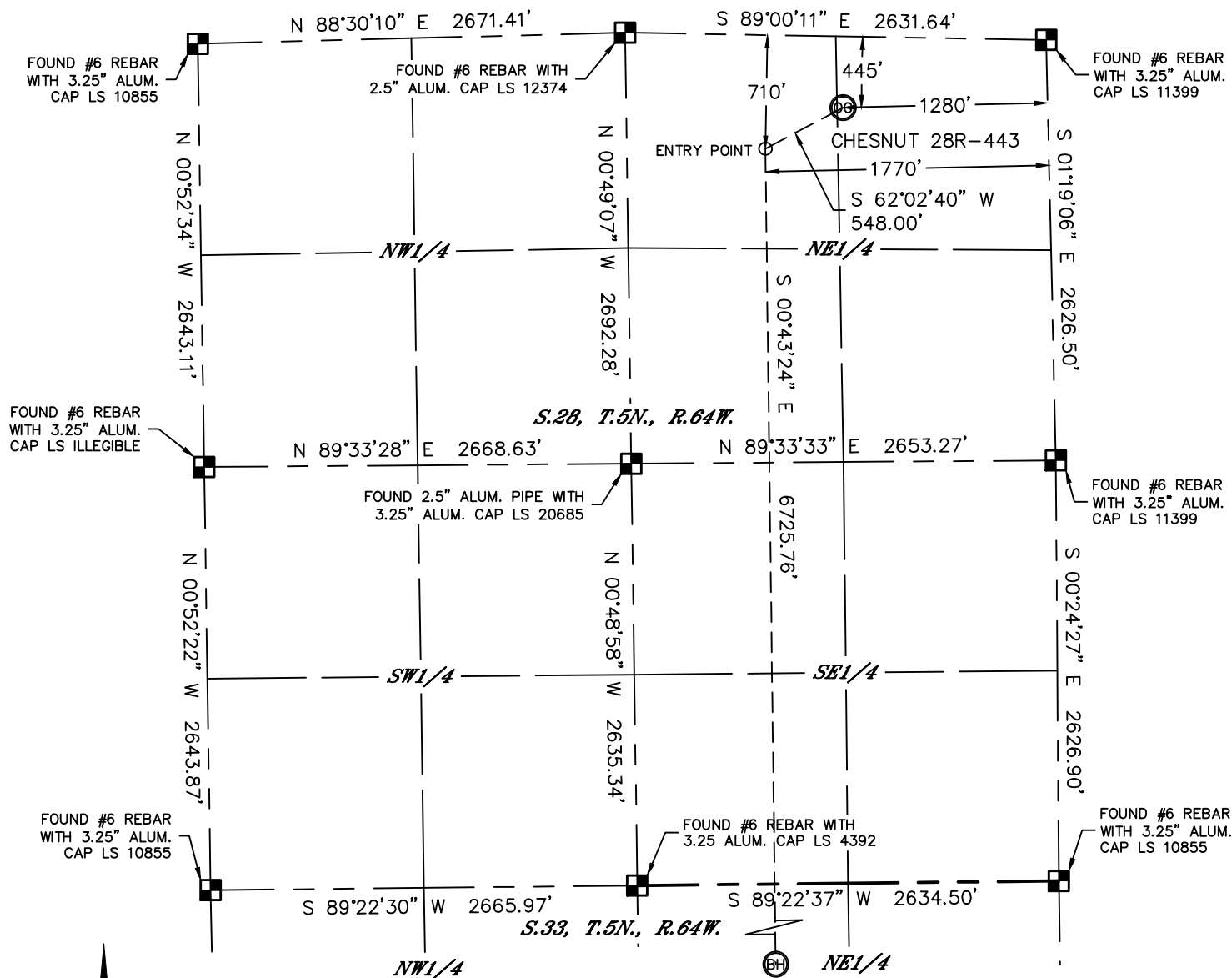


Lat40°, Inc. 1635 Foxtrail Drive, Suite 325 Loveland, CO 970-776-3321

WELL LOCATION CERTIFICATE

THIS MAP DOES NOT REPRESENT A BOUNDARY SURVEY

SECTION: 28
TOWNSHIP: 5N
RANGE: 64W



In accordance with a request from Jeff Dillingham with PDC ENERGY
Lat40°, Inc. has determined the surface location of the CHESNUT 28R-443 to be 445' from the NORTH line
and 1280' from the EAST line as measured at right angles from the section lines of Section 28, Township
5 North, Range 64 West and the bottom hole to be 2133' from the NORTH line and 1779' from the EAST
line as measured at right angles from the section lines of Section 33, Township 5 North, Range 64 West
of the Sixth Principal Meridian, County of Weld, State of Colorado.

I hereby state that this Well Location Certificate was prepared by me, or under my direct
supervision, that the fieldwork was completed on 4/28/2014 for and on behalf of PDC ENERGY
That this is not a Land Survey Plat or an Improvement Survey Plat, and that it is not to be relied
upon for establishment of fence, building, or other future improvement lines.

SURFACE LOCATION
LAT: 40.37633°N
LONG: 104.54984°W
PDOP: 1.3
ELEV: 4620'
1/4, 1/4: NENE

BOTTOM HOLE
LAT: 40.35718°N
LONG: 104.55154°W

ENTRY POINT
LAT: 40.37563°N
LONG: 104.55159°W

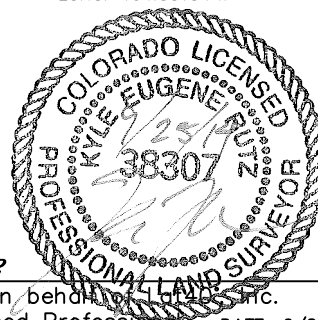
LEGEND

- = ALIQUOT MONUMENT AS DESCRIBED
- = CALCULATED POSITION

SHEET 1 OF 2

Kyle E. Rutz—On behalf of Lat40°, Inc.
Colorado Licensed Professional
Land Surveyor No. 38307

DATE: 9/25/2014
PROJECT#: 2013151



NOTE:

- 1) Bearings shown are Grid Bearings of the Colorado State Plane Coordinate System, North Zone, North American Datum 1983/2007. The lineal dimensions as contained herein are based upon the "U.S. Survey Foot."
- 2) Ground elevations are based on an observed GPS elevation (NAVD 1988 DATUM).
- 3) IMPROVEMENTS: See LOCATION DRAWING for all visible improvements within 500' of disturbed area.
- 4) SURFACE USE: RANGELAND
- 5) INSTRUMENT OPERATOR: BRIAN ROTTINGHAUS
- 6) NEAREST CULTURAL ITEMS:
BUILDING: ±1101' NE
BUILDING UNIT: ±1138' E
HIGH OCCUPANCY BUILDING UNIT: ±3029' NW
DESIGNATED OUTSIDE ACTIVITY AREA: 5280'+
PUBLIC ROAD: (CR 55) 1280' E
ABOVEGROUND UTILITY: 473' N
RAILROAD: ±3157' N
PROPERTY LINE: 445' N

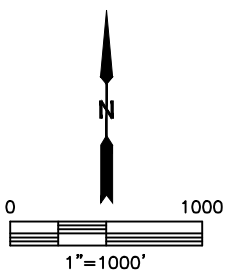
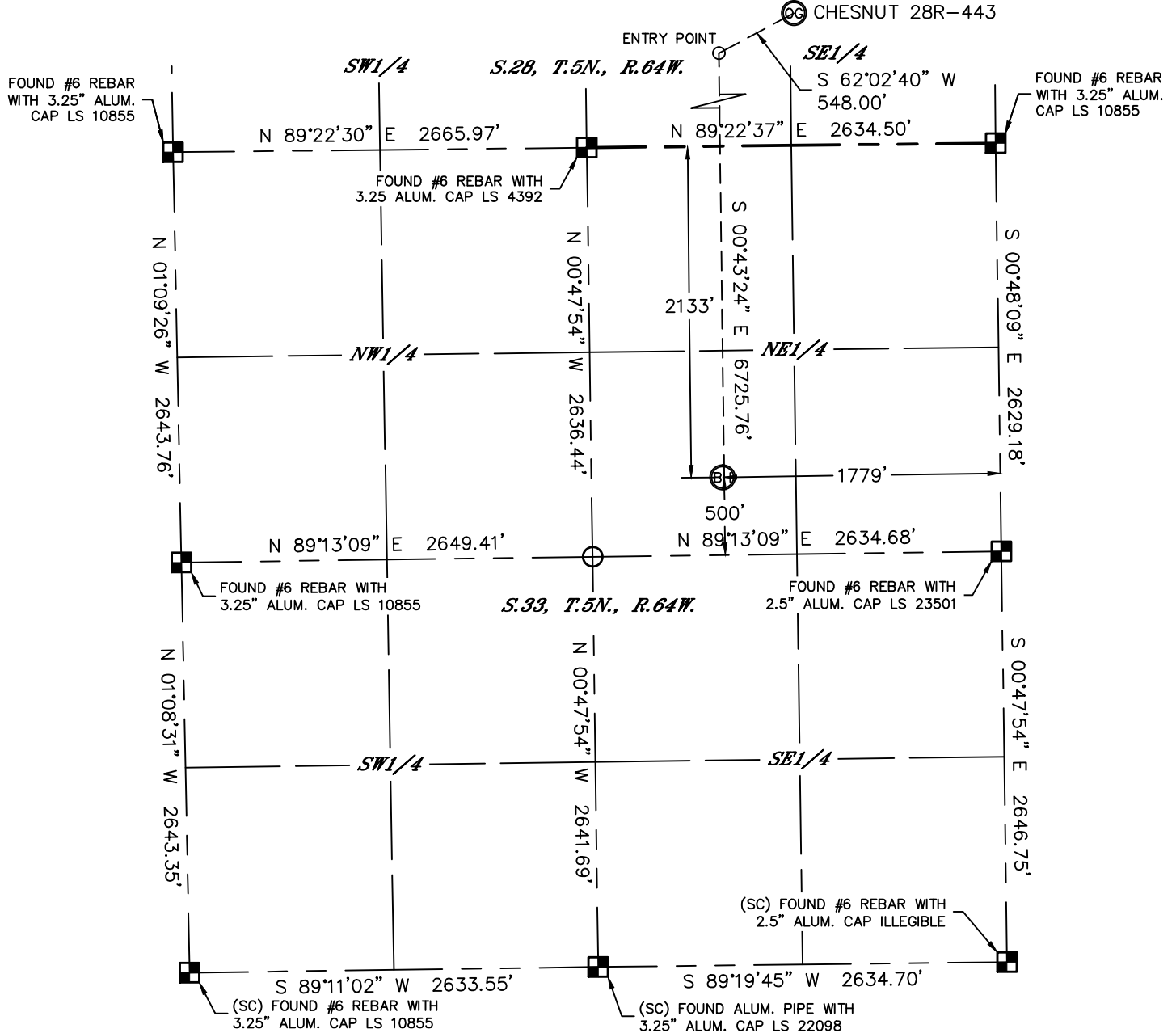


Lat40°, Inc. 1635 Foxtrail Drive, Suite 325 Loveland, CO 970-776-3321

WELL LOCATION CERTIFICATE

THIS MAP DOES NOT REPRESENT A BOUNDARY SURVEY

SECTION: 28
TOWNSHIP: 5N
RANGE: 64W



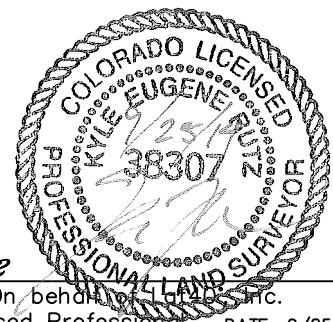
LEGEND

- = ALIQUOT MONUMENT AS DESCRIBED
- = CALCULATED POSITION

SHEET 2 OF 2

Kyle E. Rutz—On behalf of Lat40°, Inc.
Colorado Licensed Professional
Land Surveyor No. 38307

DATE: 9/25/2014
PROJECT#: 2013151



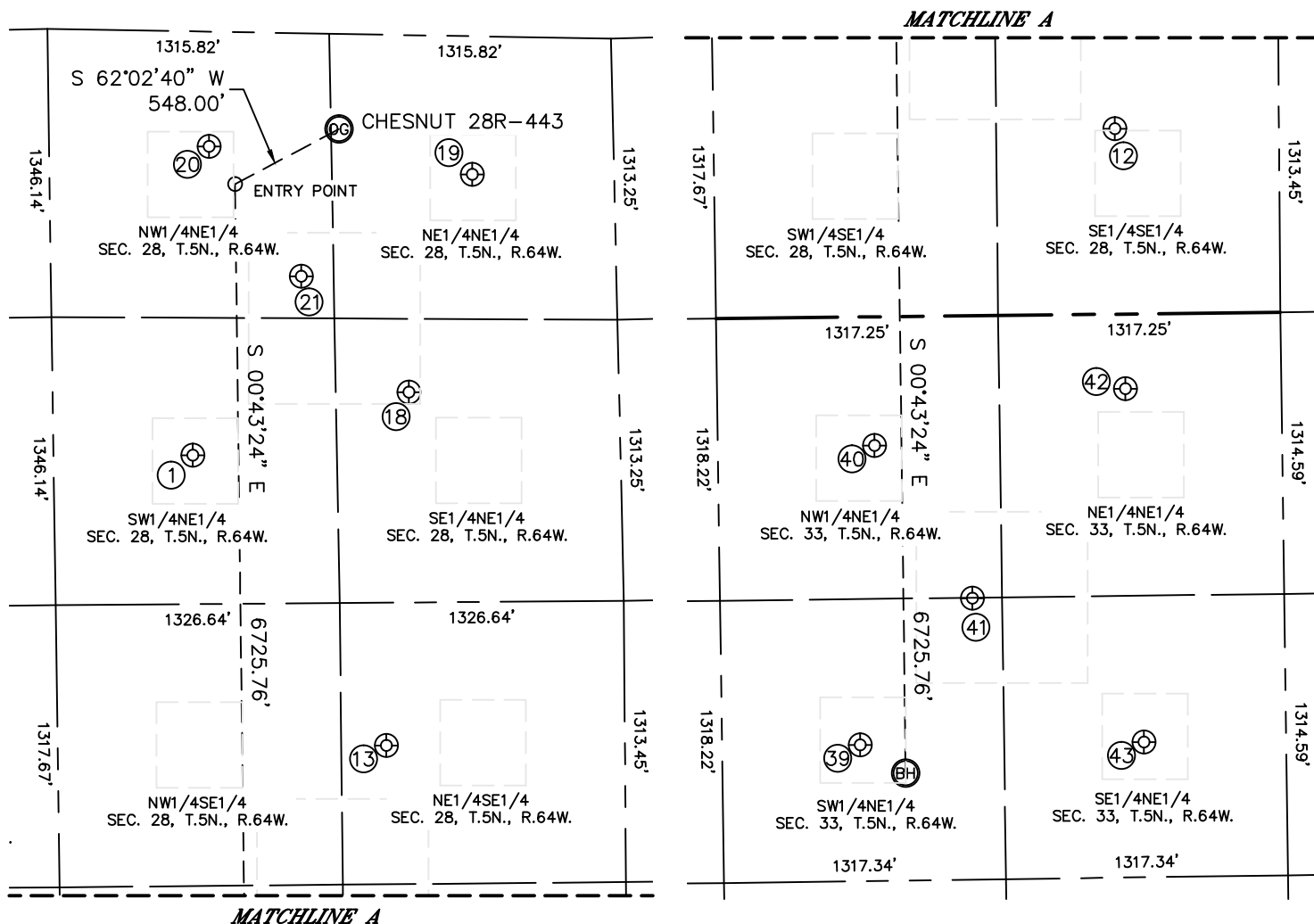


Lat40°, Inc. 1635 Foxtrail Drive, Suite 325 Loveland, CO 970-776-3321

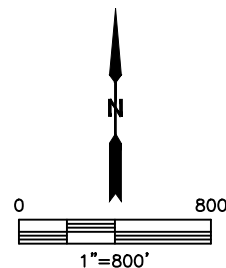
SITE SKETCH

CHESNUT 28R-443

SECTION: 28
TOWNSHIP: 5N
RANGE: 64W



WELL NO.	WELL NAME	SHL FOOTAGE				SHL LAT°	SHL LONG°	PDOP	ELEV (FT.)	1/4/1/4
1	HALL 28-3	1979	FNL	1996	FEL	40.37217	-104.55235	2.0	4625	SWNE
12	P & A FARMS 28-1	866	FSL	767	FEL	40.36541	-104.54792	3.0	4653	SESE
13	P & A FARMS 28-2	1963	FSL	1114	FEL	40.36842	-104.54916	2.9	4634	NESE
18	HALL 28-1	1668	FNL	981	FEL	40.37294	-104.54871	1.8	4615	SENE
19	HALL 28-2	645	FNL	662	FEL	40.37573	-104.54762	1.6	4615	NENE
20	HALL 28-4	536	FNL	1888	FEL	40.37612	-104.55202	1.8	4620	NWNE
21	HALL 28-5	1136	FNL	1471	FEL	40.37444	-104.55050	1.7	4620	NWNE
39	HENDRICKS 33-4	1998	FNL	1990	FEL	40.35755	-104.55230	1.5	4666	SWNE
40	HENDRICKS 33-2	601	FNL	1903	FEL	40.36138	-104.55201	3.4	4644	NWNE
41	HENDRICKS 5	1319	FNL	1456	FEL	40.35941	-104.55039	1.9	4646	SWNE
42	HENDRICKS 33-3	348	FNL	728	FEL	40.36208	-104.54779	1.7	4643	NENE
43	HENDRICKS 33-1	2000	FNL	664	FEL	40.35754	-104.54754	1.8	4658	SENE



DATE: 9/25/2014
PROJECT#: 2013151