



Corporate Office
1775 Sherman Street, #3000
Denver, Colorado 80203
303.860.5800
www.pdce.com

November 10, 2014

Department of Natural Resources
Oil and Gas Conservation Commission
The Chancery Building
Attn: Matt Lepore
1120 Lincoln St., Suite 801
Denver, CO 80203

Re: **30 Day Certification Letter – Rule 318Ae**
Chesnut 28R-443
NENE Section 28-T5N-R64W, 6th PM
Weld County, Colorado

Dear Director,

PDC Energy, Inc. ("PDC") hereby certifies to the Director that a thirty (30-day) notice has been given by certified mail to all owners in the proposed wellbore spacing unit consisting of the E2 of Section 28 and NE of Section 33 in T5N R64W, 480 acres. We have not received any objections to such well location or proposed spacing unit, therefore, PDC hereby requests the Director to approve the well.

If you should have any questions or concerns regarding this permit, please contact the undersigned at (303) 860-5800.

Sincerely,

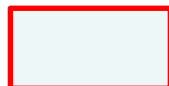
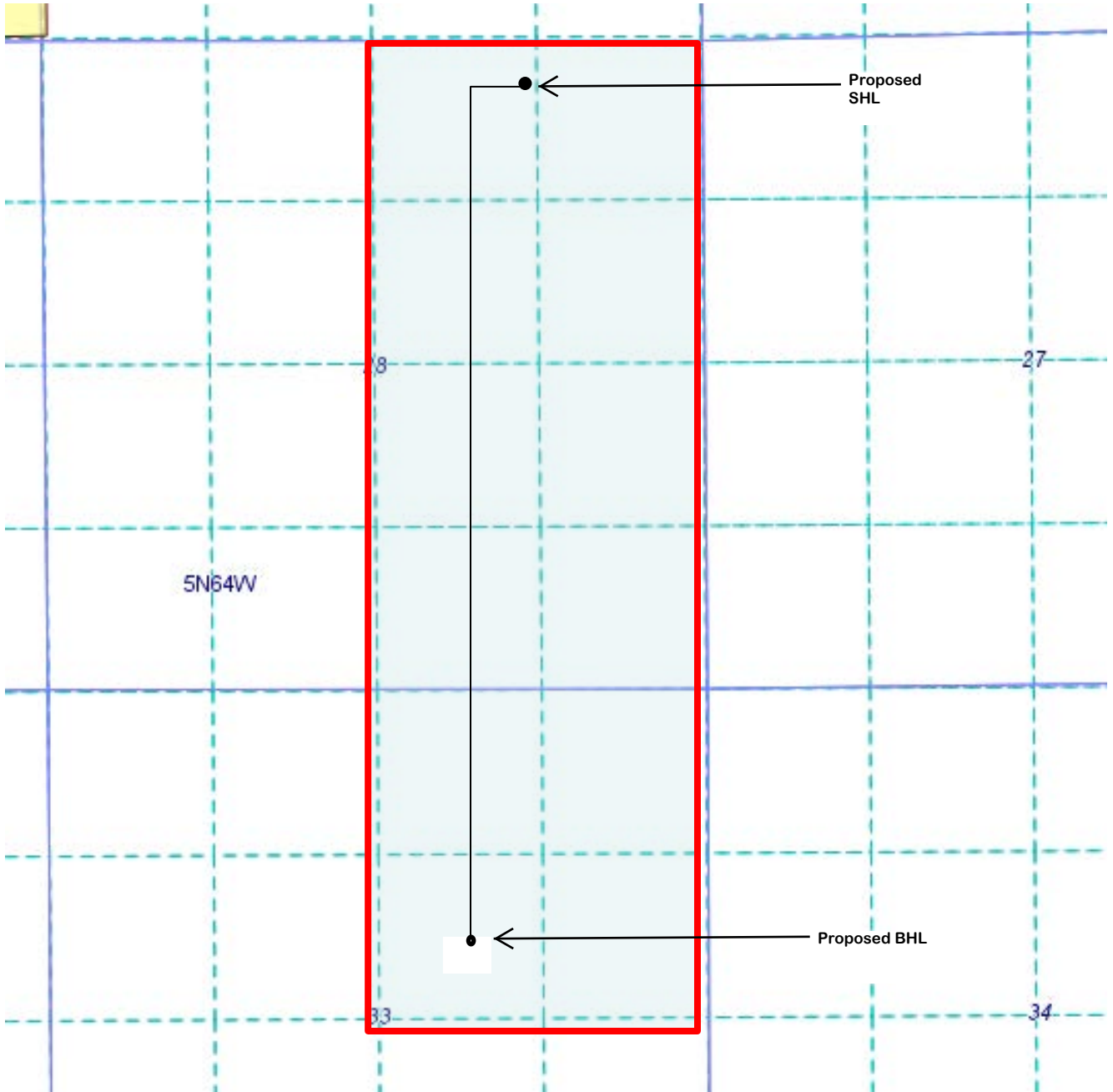
A handwritten signature in blue ink that reads "Kelsi Welch".

Kelsi Welch
Regulatory Analyst
PDC Energy

Chesnut 28R-443

Proposed Spacing Unit

E2 of Sec 28 and NE Sec 33 in T5N R64W



Proposed 480 acre Spacing Unit

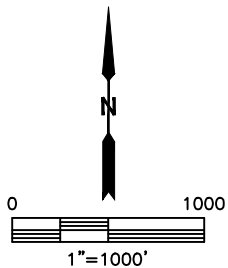
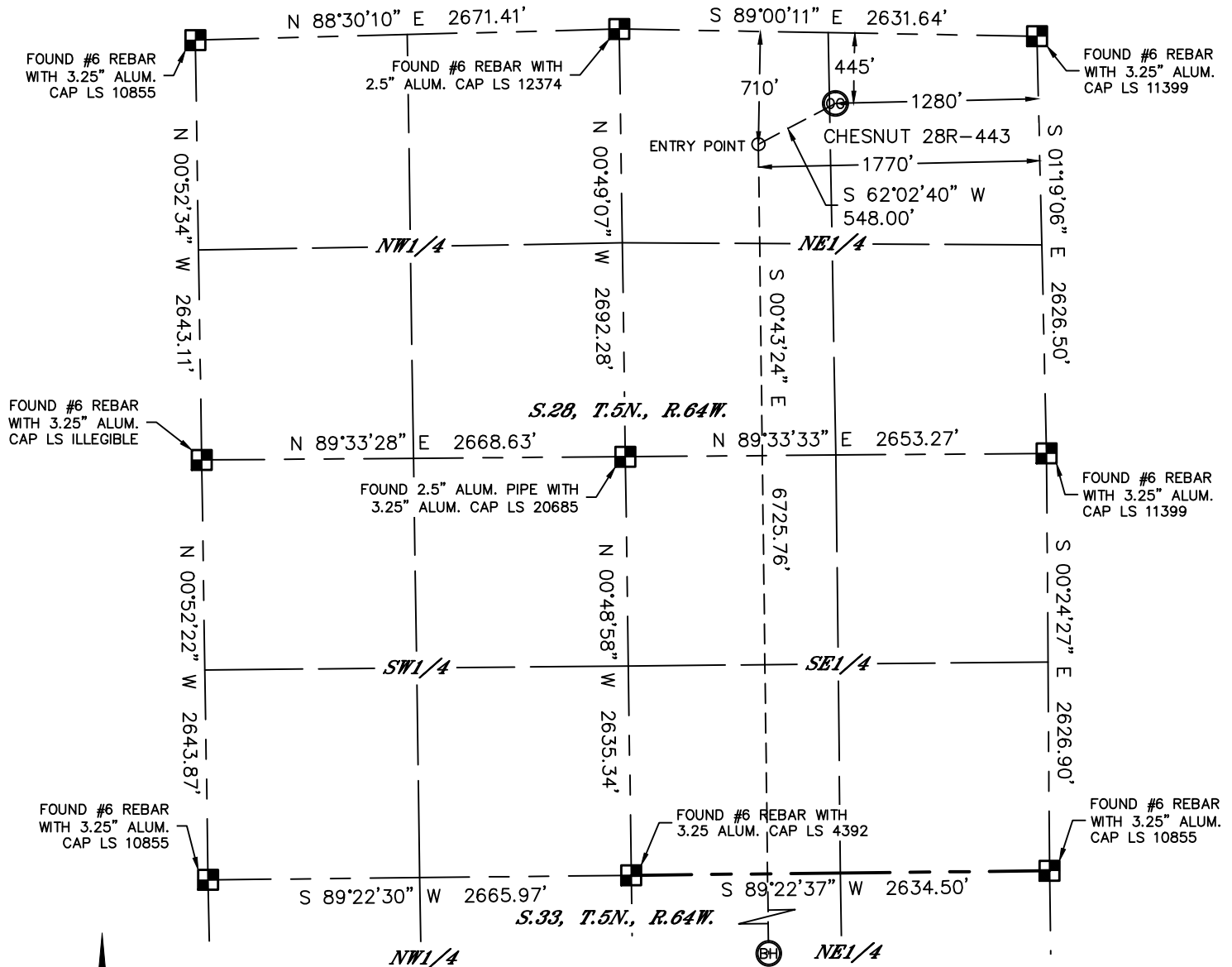


Lat40°, Inc. 1635 Foxtrail Drive, Suite 325 Loveland, CO 970-776-3321

WELL LOCATION CERTIFICATE

THIS MAP DOES NOT REPRESENT A BOUNDARY SURVEY

SECTION: 28
TOWNSHIP: 5N
RANGE: 64W



In accordance with a request from Jeff Dillingham with PDC ENERGY
Lat40°, Inc. has determined the surface location of the CHESNUT 28R-443 to be 445' from the NORTH line
and 1280' from the EAST line as measured at right angles from the section lines of Section 28, Township
5 North, Range 64 West and the bottom hole to be 2133' from the NORTH line and 1779' from the EAST
line as measured at right angles from the section lines of Section 33, Township 5 North, Range 64 West
of the Sixth Principal Meridian, County of Weld, State of Colorado.

I hereby state that this Well Location Certificate was prepared by me, or under my direct
supervision, that the fieldwork was completed on 4/28/2014 for and on behalf of PDC ENERGY
That this is not a Land Survey Plat or an Improvement Survey Plat, and that it is not to be relied
upon for establishment of fence, building, or other future improvement lines.

SURFACE LOCATION
LAT: 40.37633°N
LONG: 104.54984°W
PDOP: 1.3
ELEV: 4620'
1/4, 1/4: NENE

BOTTOM HOLE
LAT: 40.35718°N
LONG: 104.55154°W

ENTRY POINT
LAT: 40.37563°N
LONG: 104.55159°W

NOTE:

- 1) Bearings shown are Grid Bearings of the Colorado State Plane Coordinate System, North Zone, North American Datum 1983/2007. The lineal dimensions as contained herein are based upon the "U.S. Survey Foot."
- 2) Ground elevations are based on an observed GPS elevation (NAVD 1988 DATUM).
- 3) IMPROVEMENTS: See LOCATION DRAWING for all visible improvements within 500' of disturbed area.
- 4) SURFACE USE: RANGELAND
- 5) INSTRUMENT OPERATOR: BRIAN ROTTINGHAUS
- 6) NEAREST CULTURAL ITEMS:
BUILDING: ±1101' NE
BUILDING UNIT: ±1138' E
HIGH OCCUPANCY BUILDING UNIT: ±3029' NW
DESIGNATED OUTSIDE ACTIVITY AREA: 5280'+
PUBLIC ROAD: (CR 55) 1280' E
ABOVEGROUND UTILITY: 473' N
RAILROAD: ±3157' N
PROPERTY LINE: 445' N

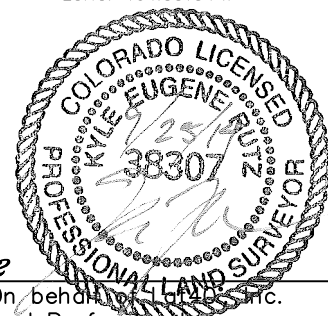
LEGEND

- = ALIQUOT MONUMENT AS DESCRIBED
○ = CALCULATED POSITION

SHEET 1 OF 2

Kyle E. Rutz—On behalf of Lat40°, Inc.
Colorado Licensed Professional
Land Surveyor No. 38307

DATE: 9/25/2014
PROJECT#: 2013151



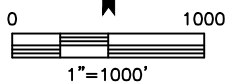
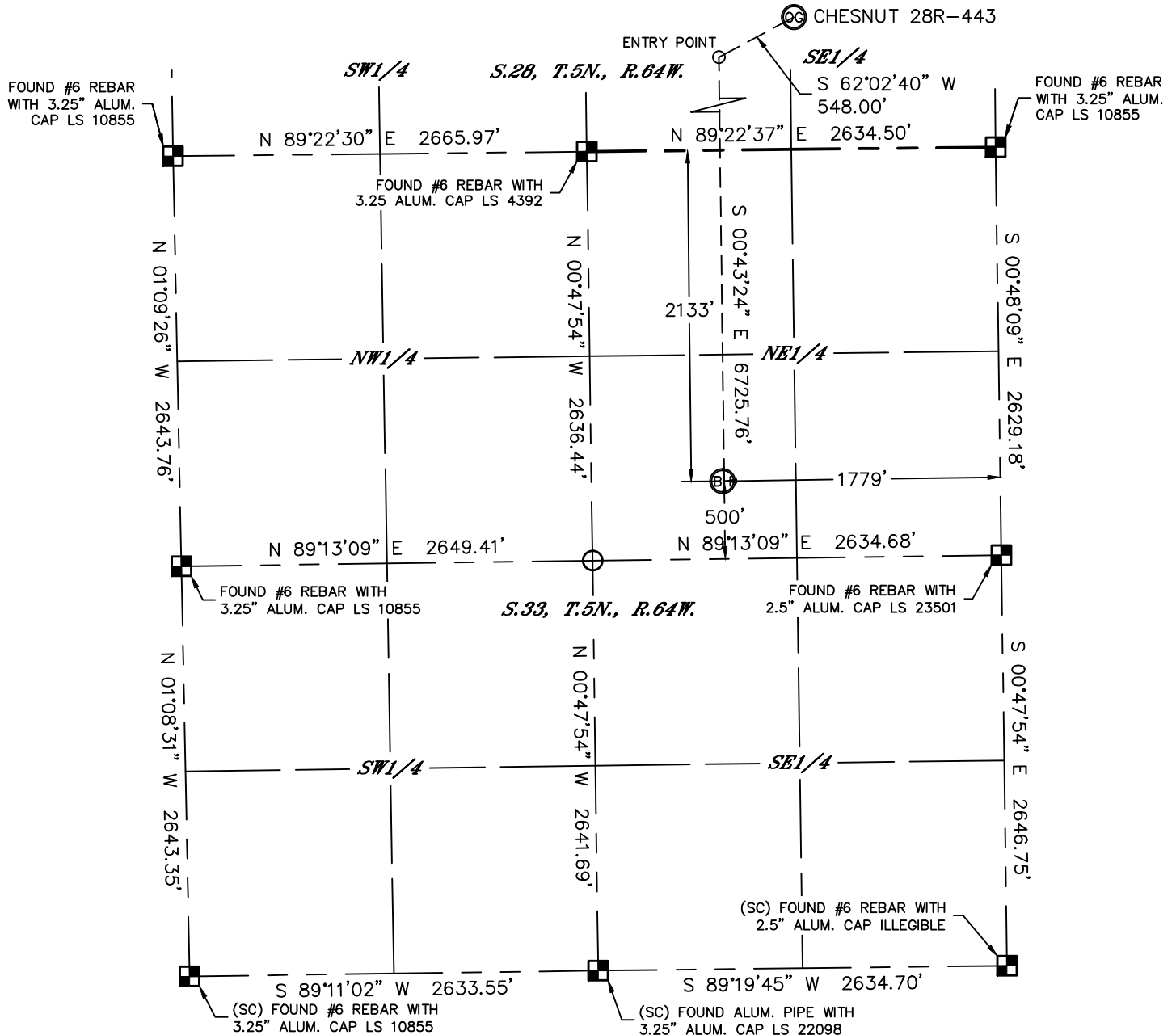


Lat40°, Inc. 1635 Foxtrail Drive, Suite 325 Loveland, CO 970-776-3321

WELL LOCATION CERTIFICATE

THIS MAP DOES NOT REPRESENT A BOUNDARY SURVEY

SECTION: 28
TOWNSHIP: 5N
RANGE: 64W



LEGEND

- = ALIQUOT MONUMENT AS DESCRIBED
- = CALCULATED POSITION

SHEET 2 OF 2

Kyle E. Rutz—On behalf of Lat40°, Inc.
Colorado Licensed Professional
Land Surveyor No. 38307

DATE: 9/25/2014
PROJECT#: 2013151

