

RADIAL CEMENT BOND  
GAMMA RAY  
CCL

Company		KERR MCGEE OIL AND GAS		Company		KERR MCGEE OIL AND GAS	
Well		UPRR 50 PAN AM D #7		Well		UPRR 50 PAN AM D #7	
Field		WATTENBERG		Field		WATTENBERG	
County		WELD		County		WELD	
State		CO		State		CO	
Location:				API # : 05-123-12677		Other Services	
SHL: 1845' FNL & 660' FWL SW/NW							
Permanent Datum		GL		Elevation		5018'	
Log Measured From		KB 10'					
Drilling Measured From		KB					
SEC 3		TWP 1N		RGE 66W			
Date		10-1-2014					
Run Number		ONE					
Depth Driller		8115'					
Depth Logger		4674'					
Bottom Logged Interval		4671'					
Top Log Interval		SURFACE					
Open Hole Size		7.875					
Type Fluid		WATER					
Density / Viscosity		1.0					
Max. Recorded Temp.		143 DEG F					
Estimated Cement Top		564'					
Time Well Ready		N/A					
Time Logger on Bottom		N/A					
Equipment Number		4310					
Location		GREELEY					
Recorded By		N. BREHMER					
Witnessed By		L. LEHART					
Borehole Record				Tubing Record			
Run Number		Bit		From		To	
ONE		12.25"		SURFACE		778'	
TWO		7.88"		778'		8115'	
Casing Record		Size		Wgt/Ft		Top	
Surface String		8.63		24#		SURFACE	
Prot. String							
Production String		5.5		17#		SURFACE	
Liner						8115'	

<<< Fold Here >>>

All interpretations are opinions based on inferences from electrical or other measurements and we cannot and do not guarantee the accuracy or correctness of any interpretation, and we shall not, except in the case of gross or willful negligence on our part, be liable or responsible for any loss, costs, damages, or expenses incurred or sustained by anyone resulting from any interpretation made by any of our officers, agents or employees. These interpretations are also subject to our general terms and conditions set out in our current Price Schedule.

Comments

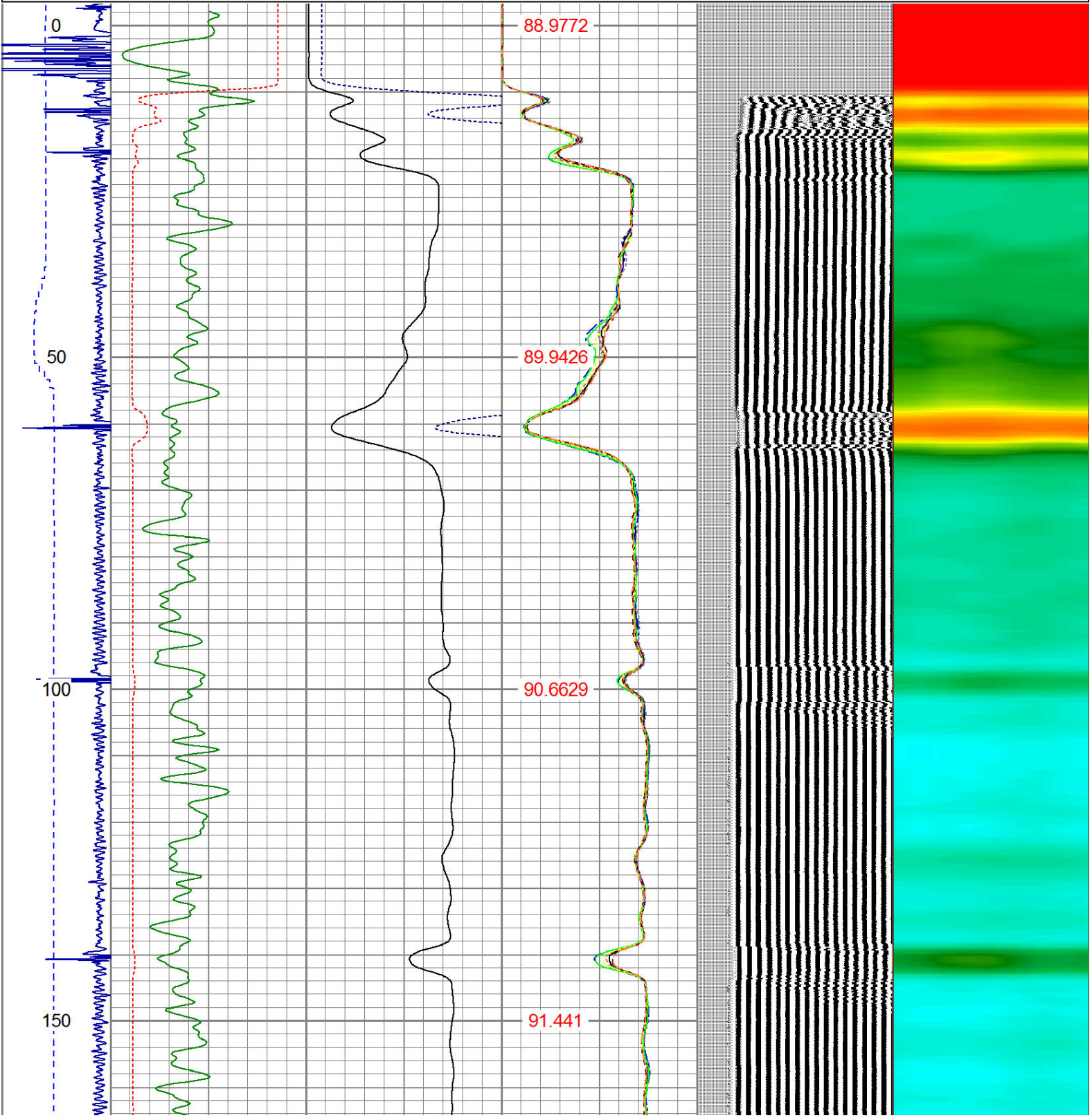
RAN CBL TO VERIFY CEMENT BOND

THANK YOU FOR USING WARRIOR !!!!!!!

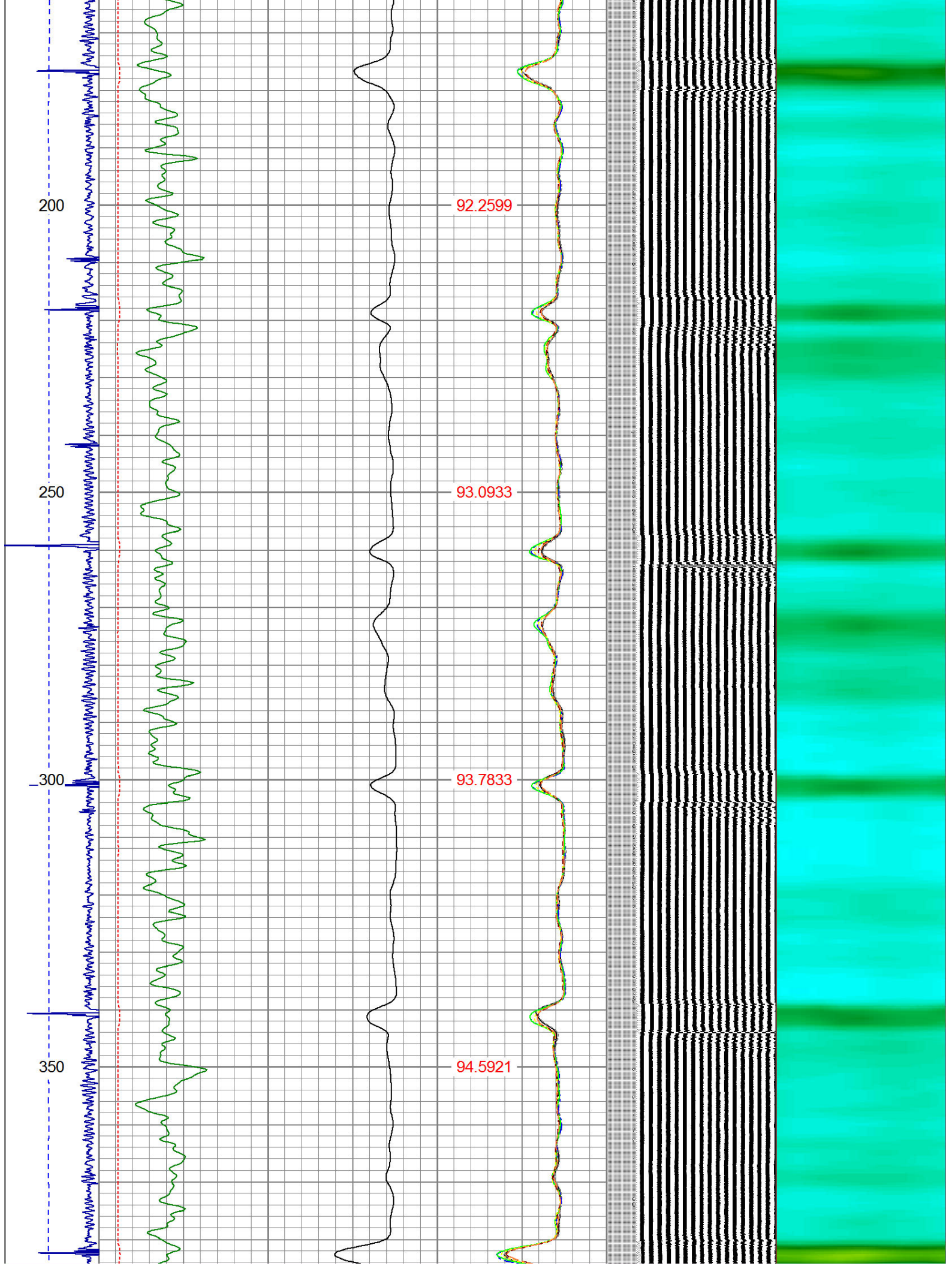
Sensor	Offset (ft)	Schematic	Description	Len (ft)	OD (in)	Wt (lb)

			PTS275	2.83	2.75	
HEADVOLT	16.13					
IntTemp	14.71					
WVF3FT	11.46		RBT-Probe (Base)	8.92	2.75	90.00
WVFCAL	11.46		Probe Radii Bond Tool with Digital Telemetry			
WVFS1	11.46					
WVFS2	11.46					
WVFS3	11.46					
WVFS4	11.46					
WVFS5	11.46					
WVFS6	11.46					
WVFS7	11.46					
WVFS8	11.46					
WVF5FT	10.46					
CNLSC	6.00		CNT-Probe_B (275)	2.88	2.75	40.00
CNSSC	5.17		6 bow centralizer			
CCL	3.64					
			GR-Probe (275)	4.33	2.75	30.00
			Probe 2.75"			
GR	0.90					
Dataset: uprr 50 pan am d #7.db: field/well/run1/pass2 Total Length: 18.96 ft Total Weight: 160.00 lb O.D. 2.75 in						

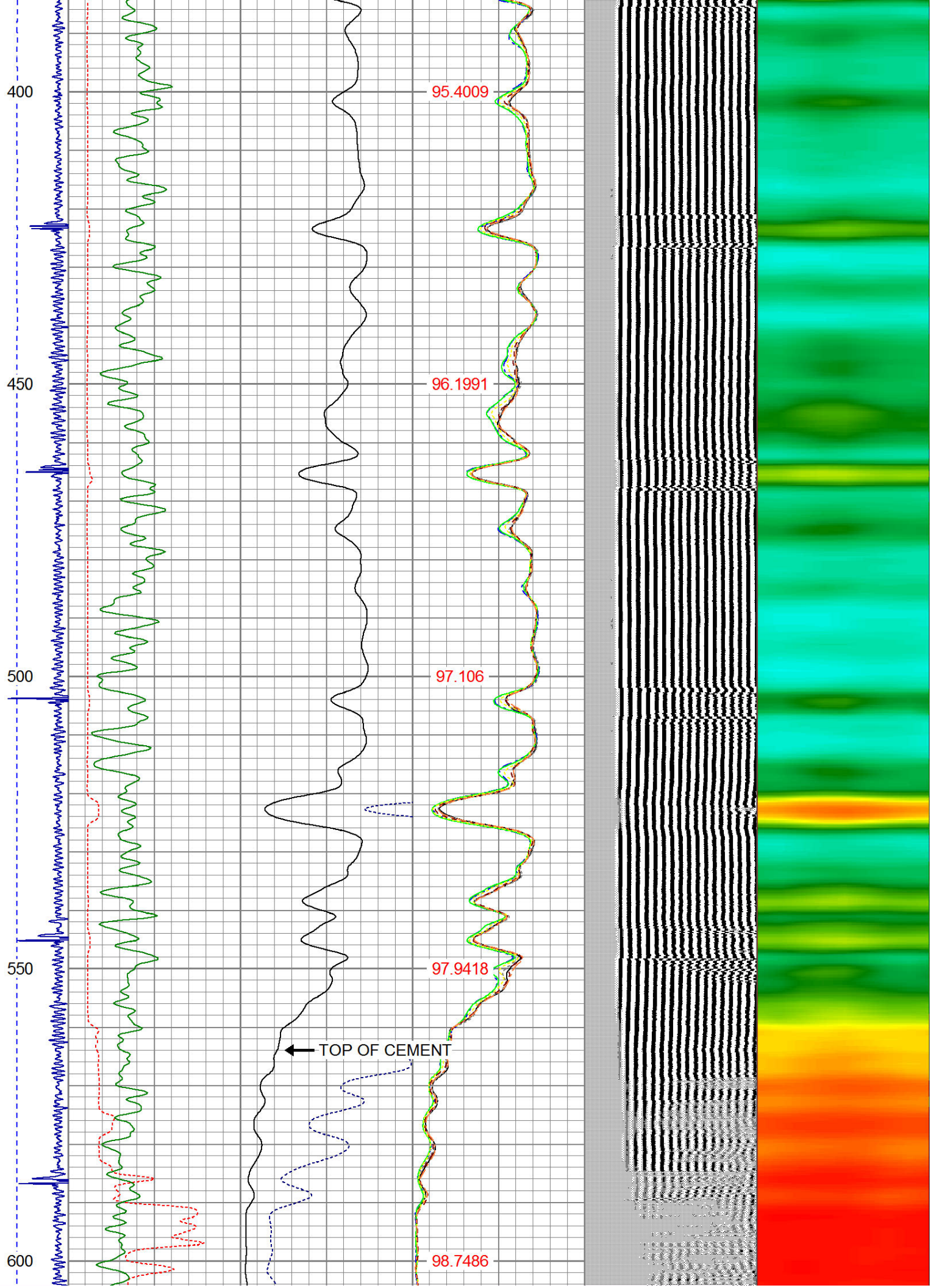
Dataset Creation: Wed Oct 01 15:44:14 2014 by Log 7.0 B1																																
Charted by: Depth in Feet scaled 1:240																																
-9	CCL	1	200	TT (usec)	900	0	AMP (mV)	100	0	AMPS1	100	200	VDL	1200	1	Cement Map	8															
LSPD (ft/min)	0		0	GR (GAPI)	200	0	AMPx5 (mV)	20	0	AMPS2	100					1100																
	200		200	GR (GAPI)	400			0	AMPS4	100																						
	0		250					0	AMPS5	100																						
										0	AMPS6	100																				
										0	AMPS7	100																				
										0	AMPS8	100																				
										IntTemp																						
										(degF)																						



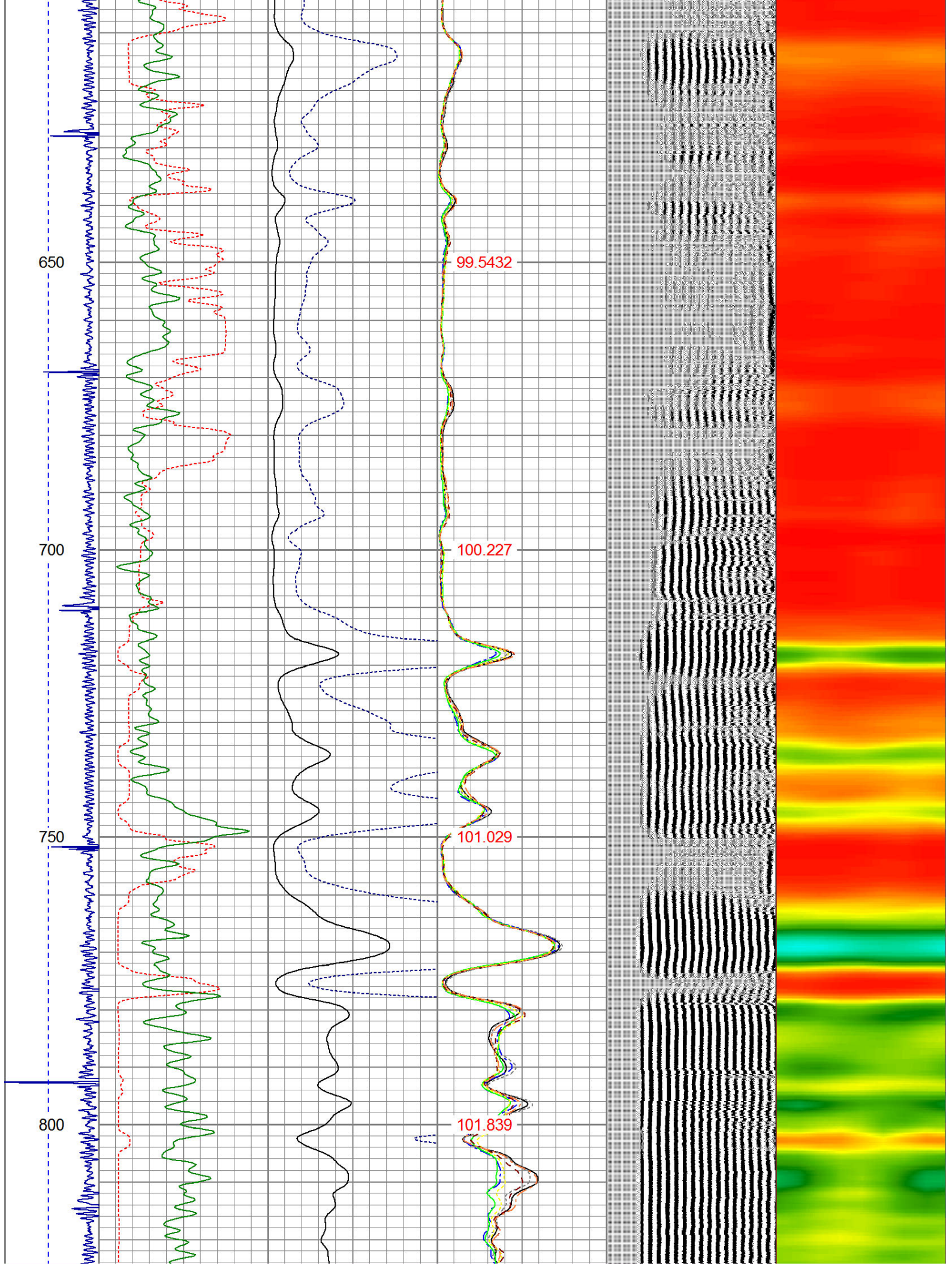




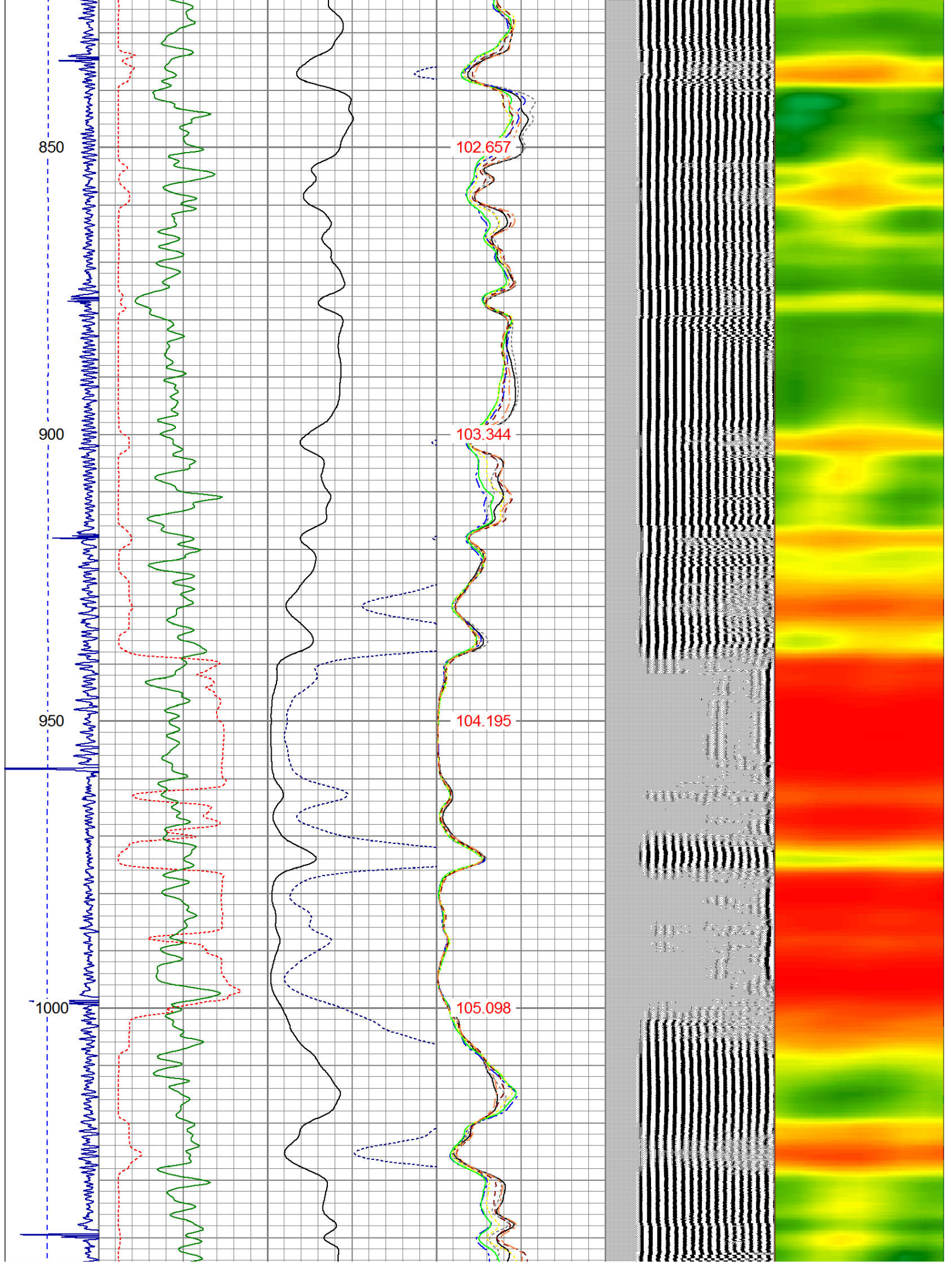




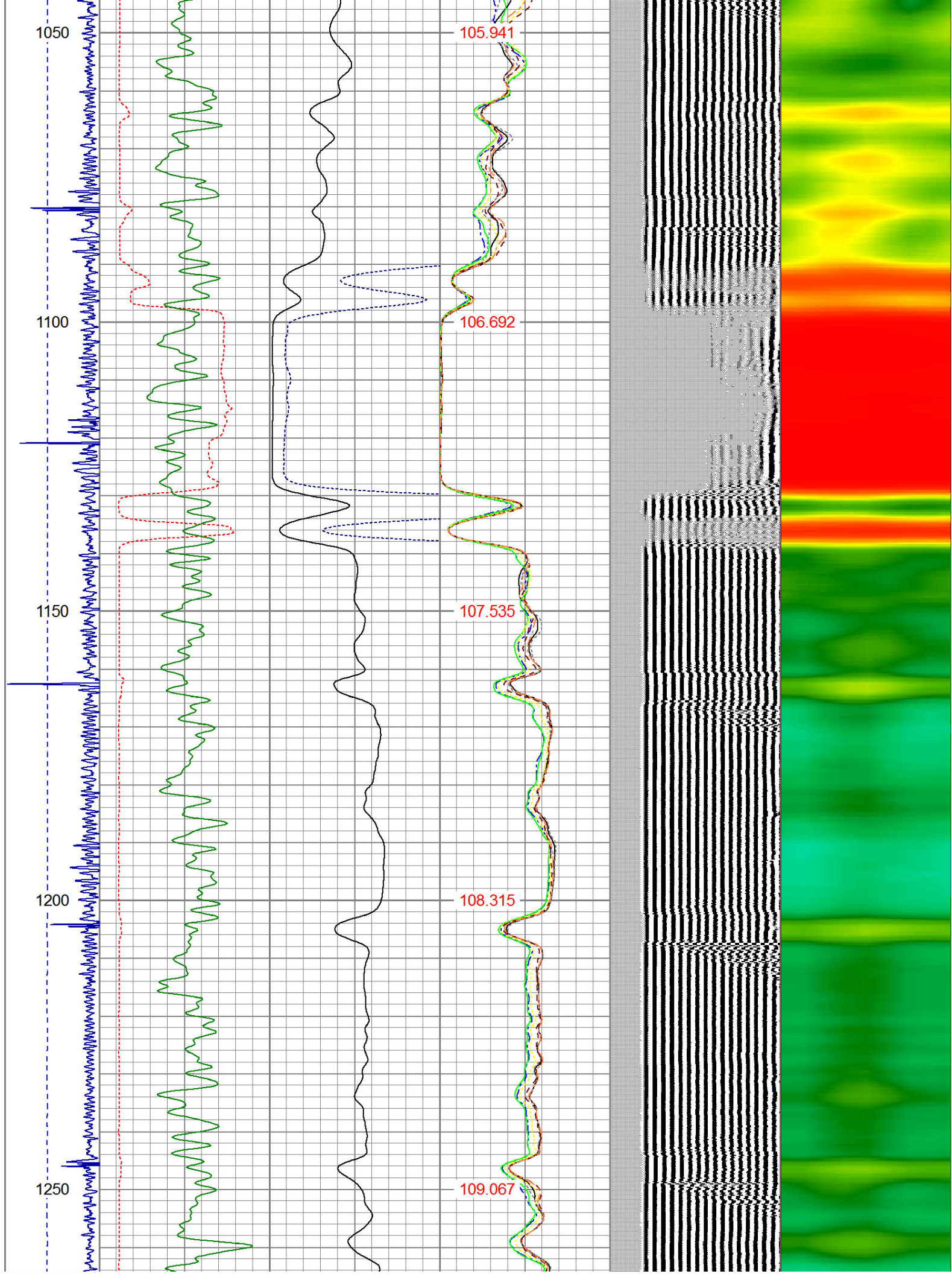




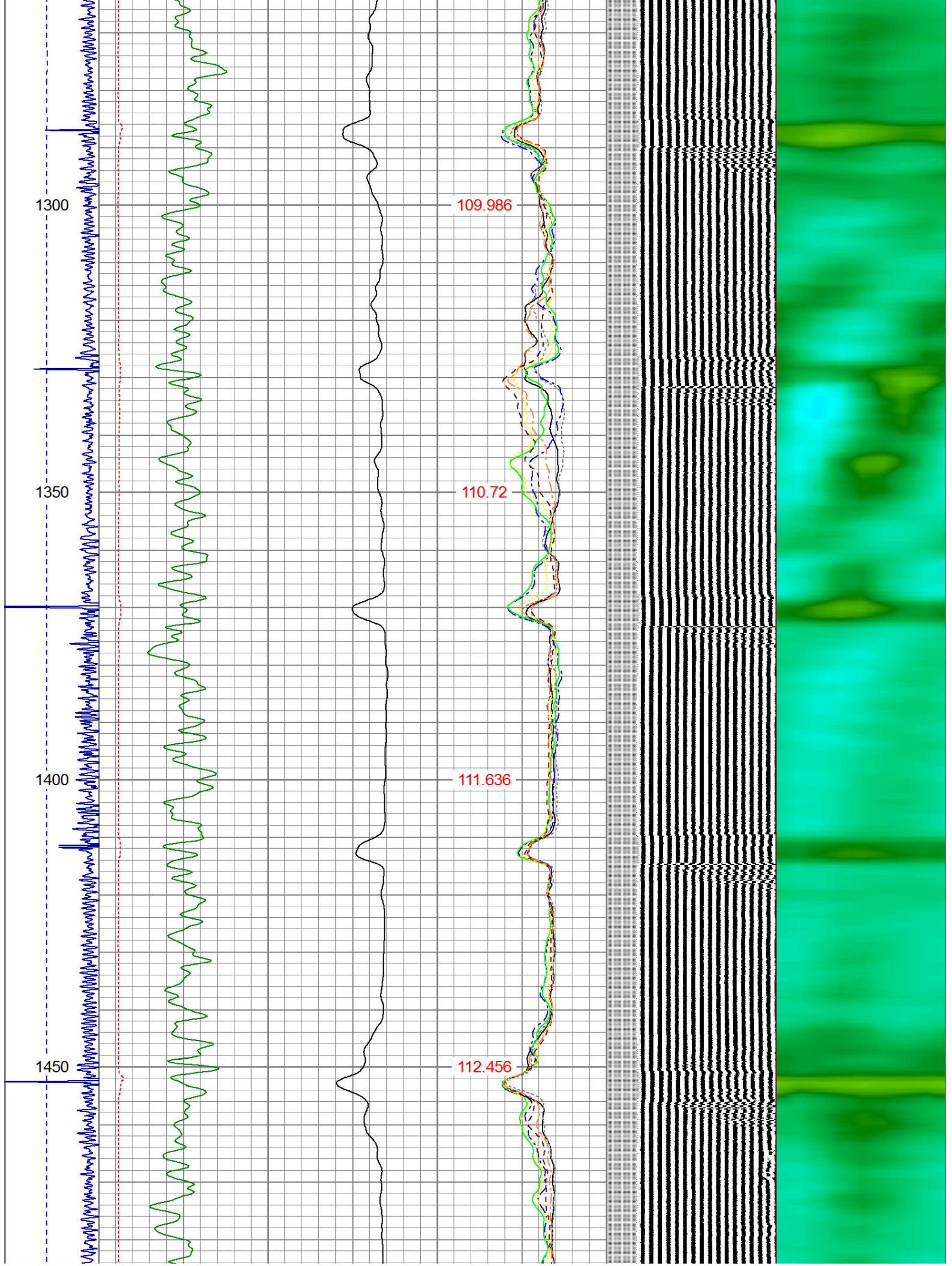




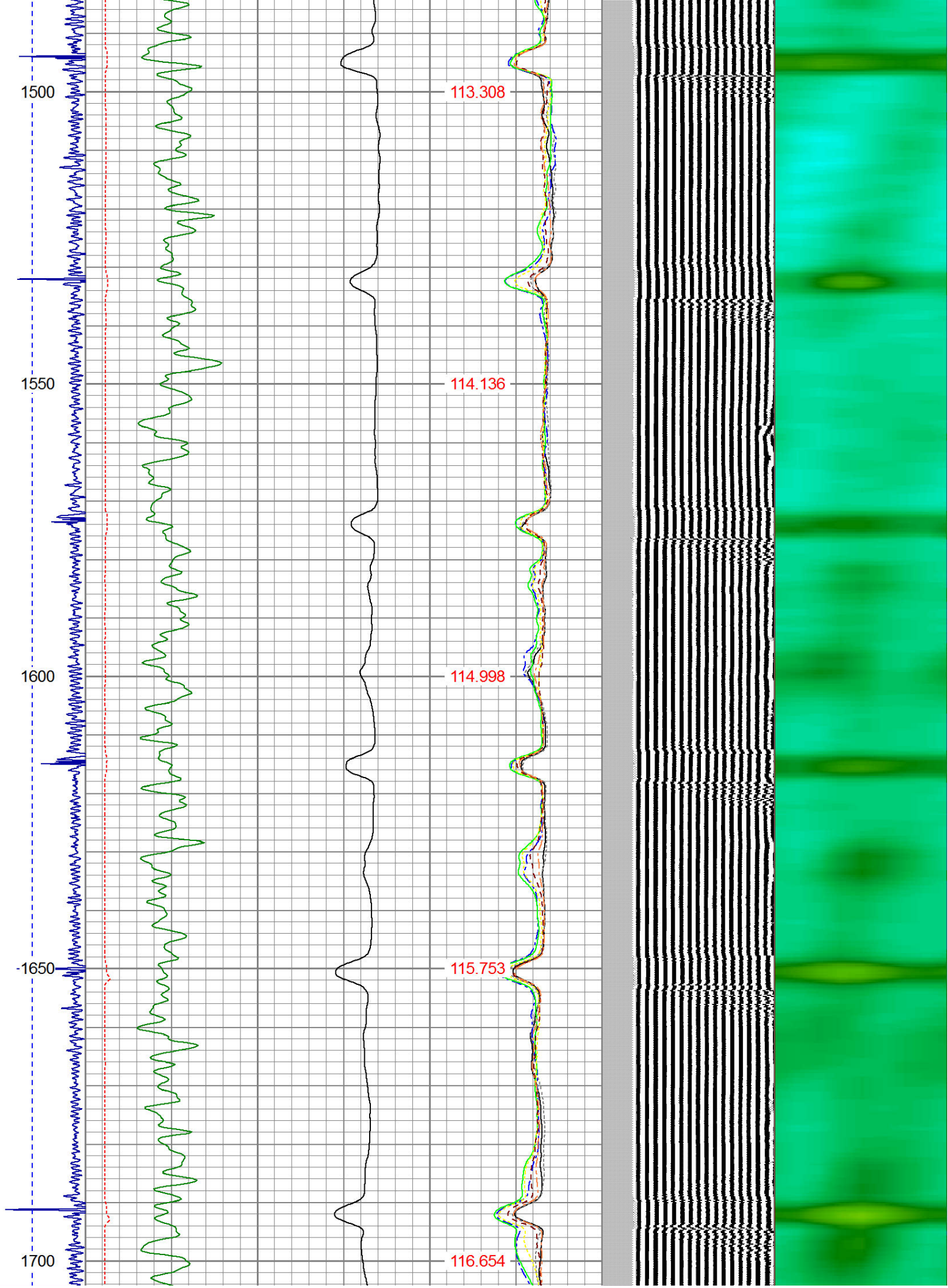




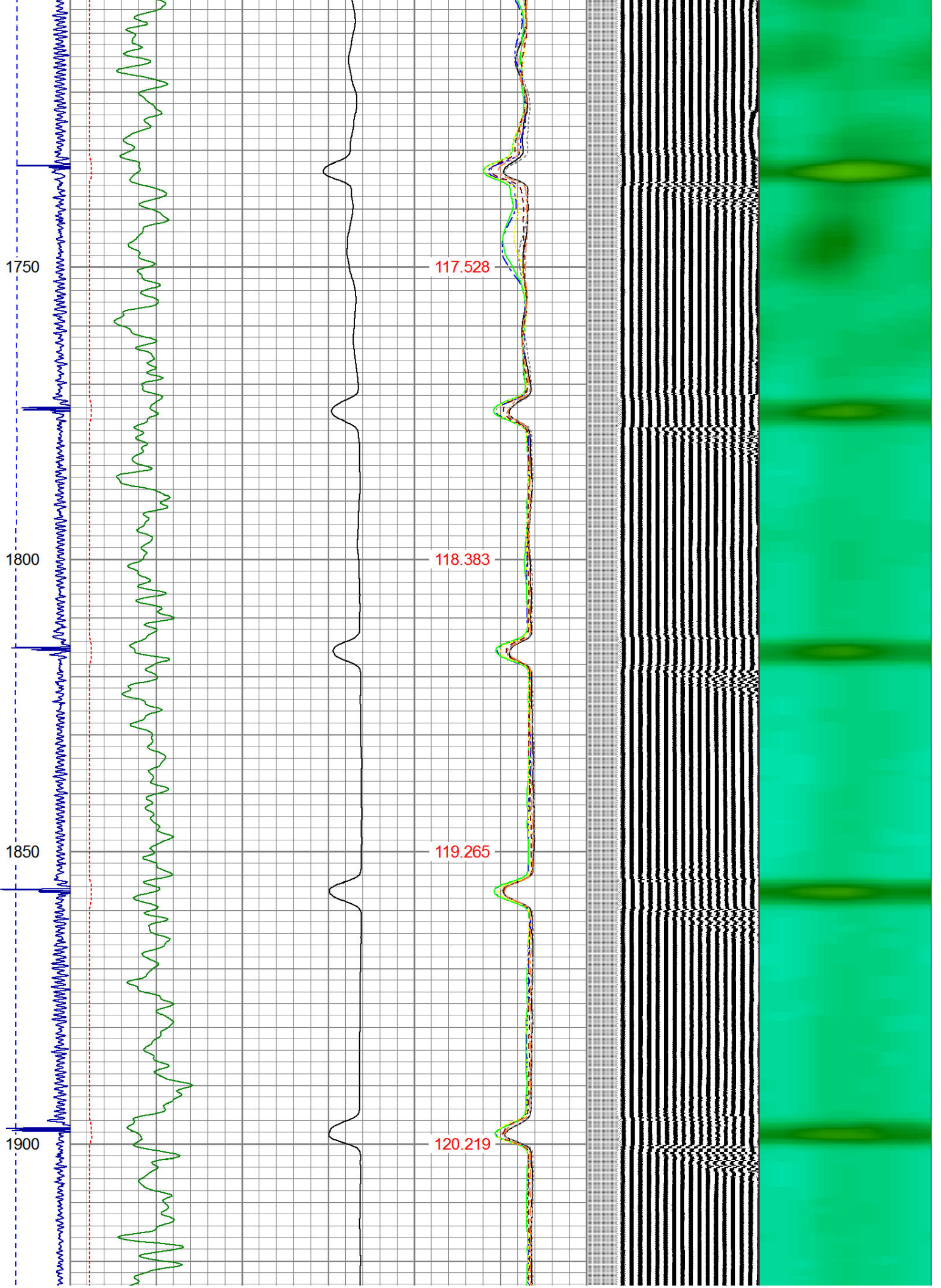


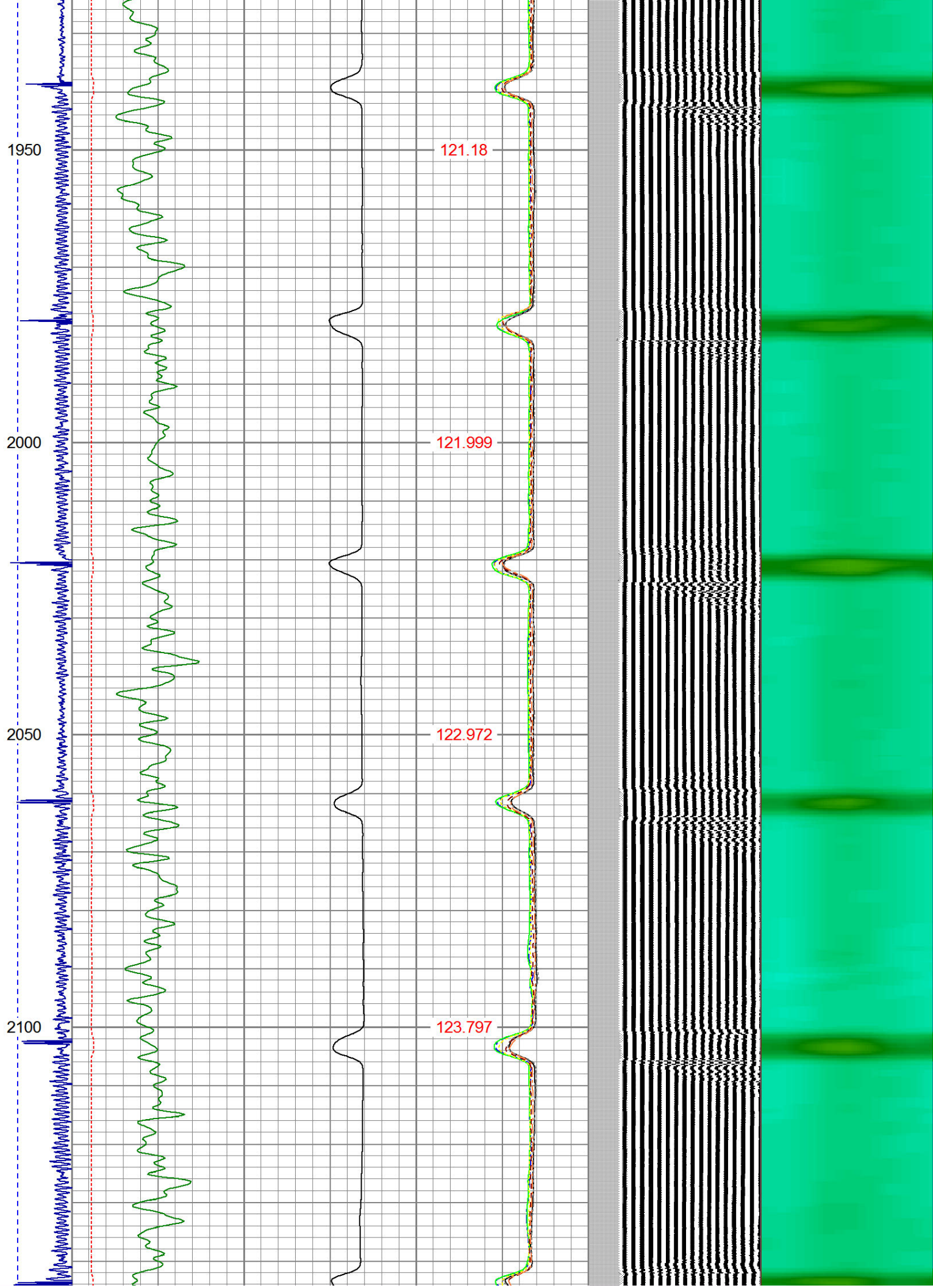




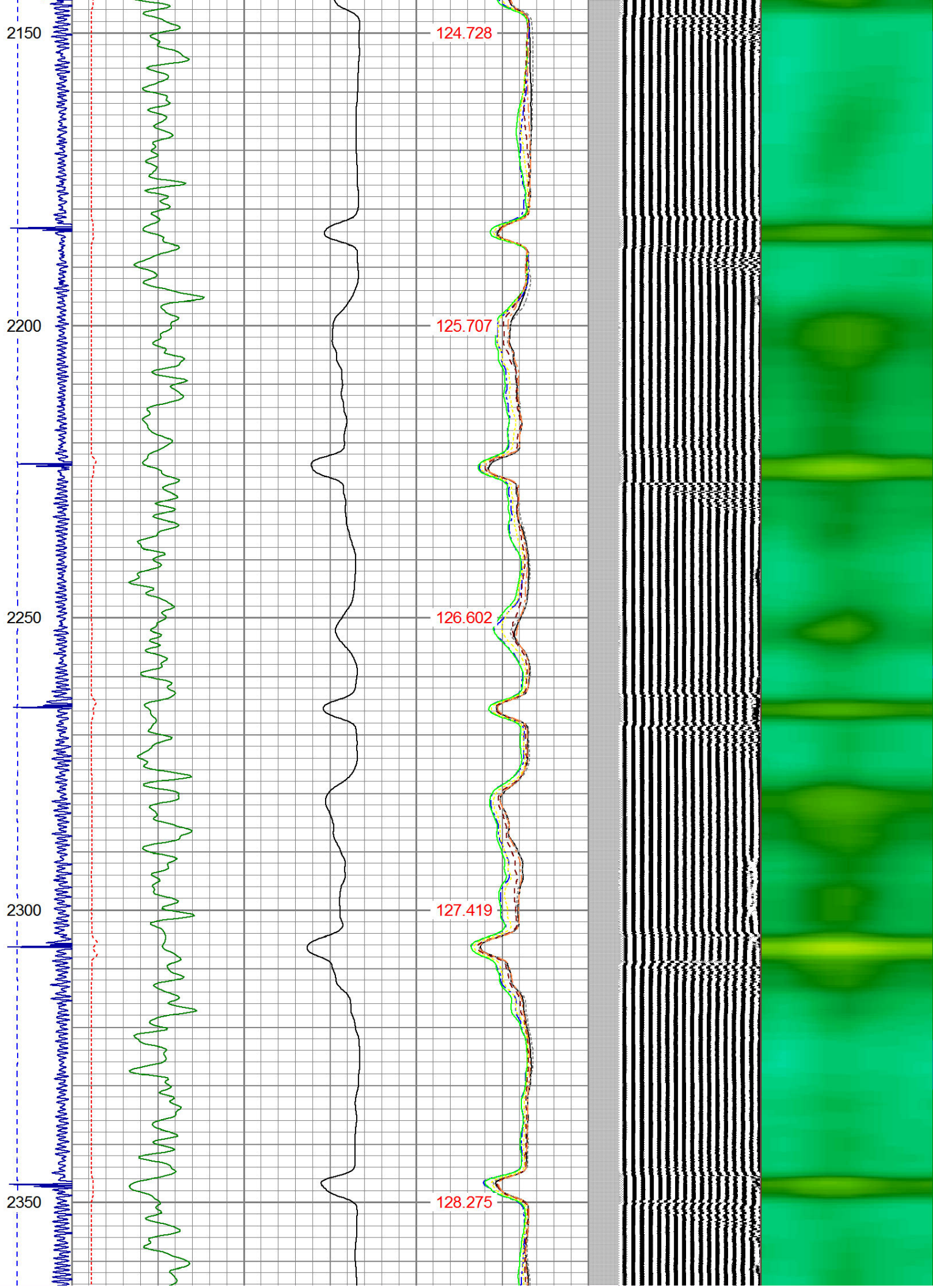




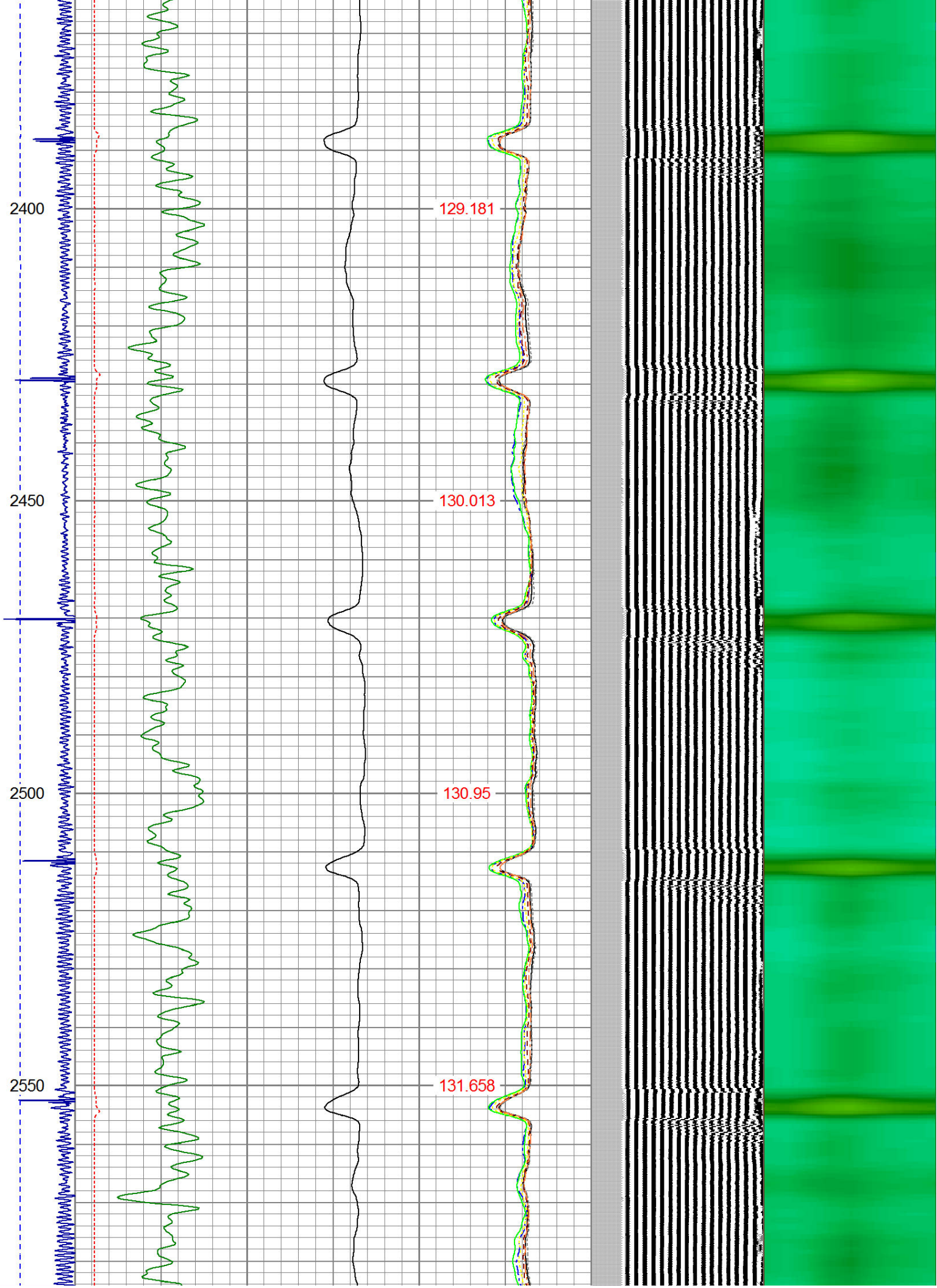




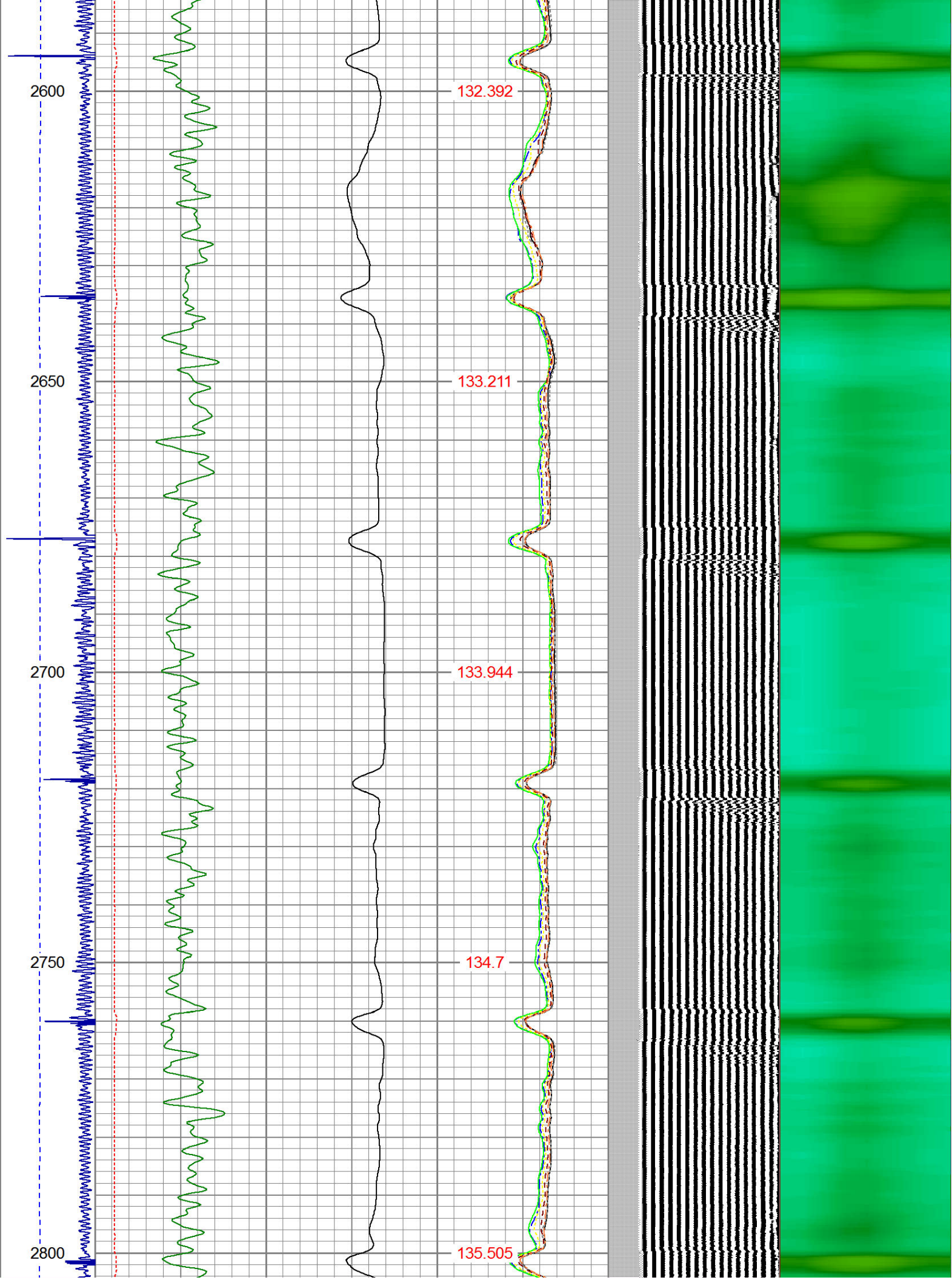




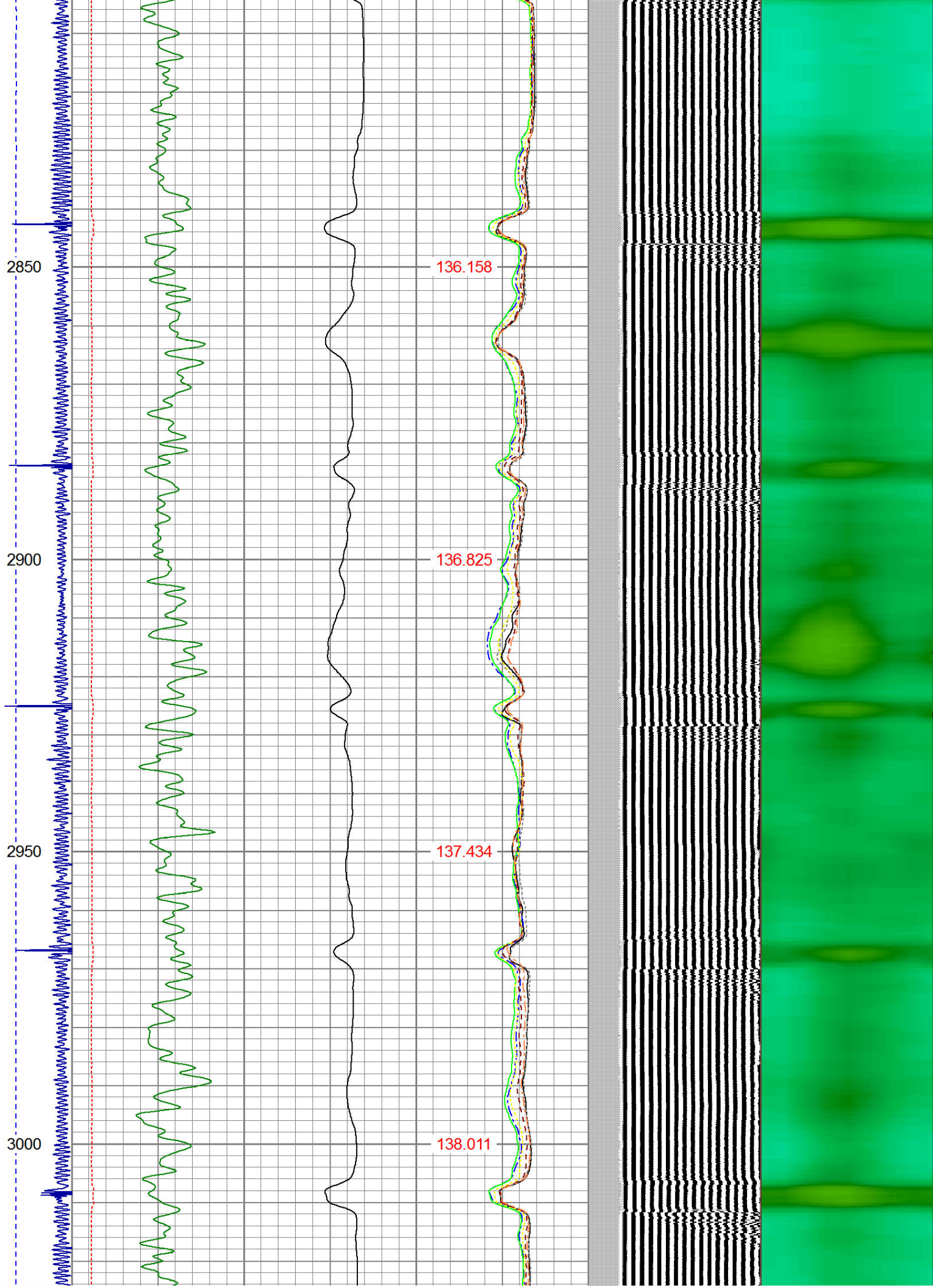




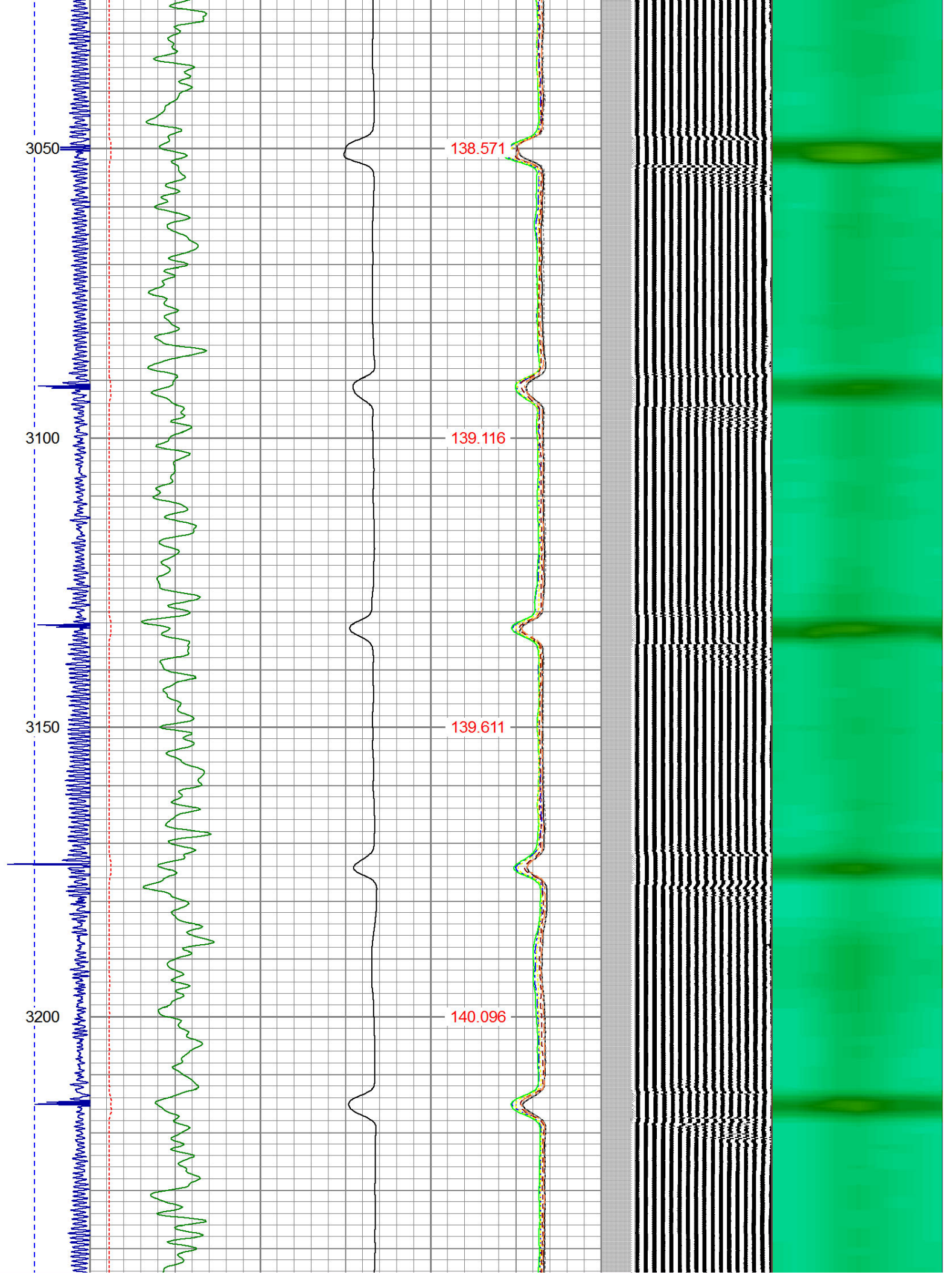




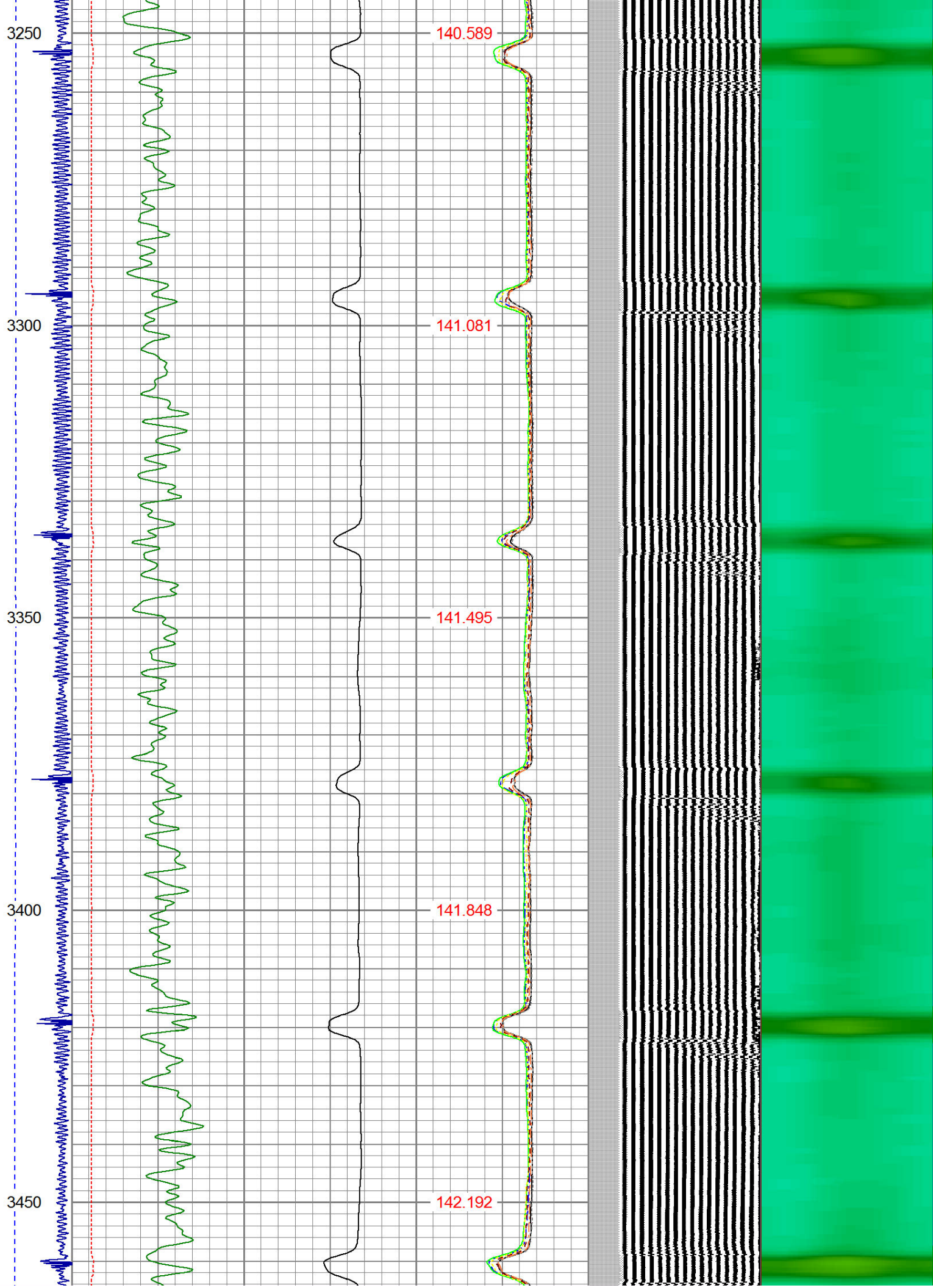




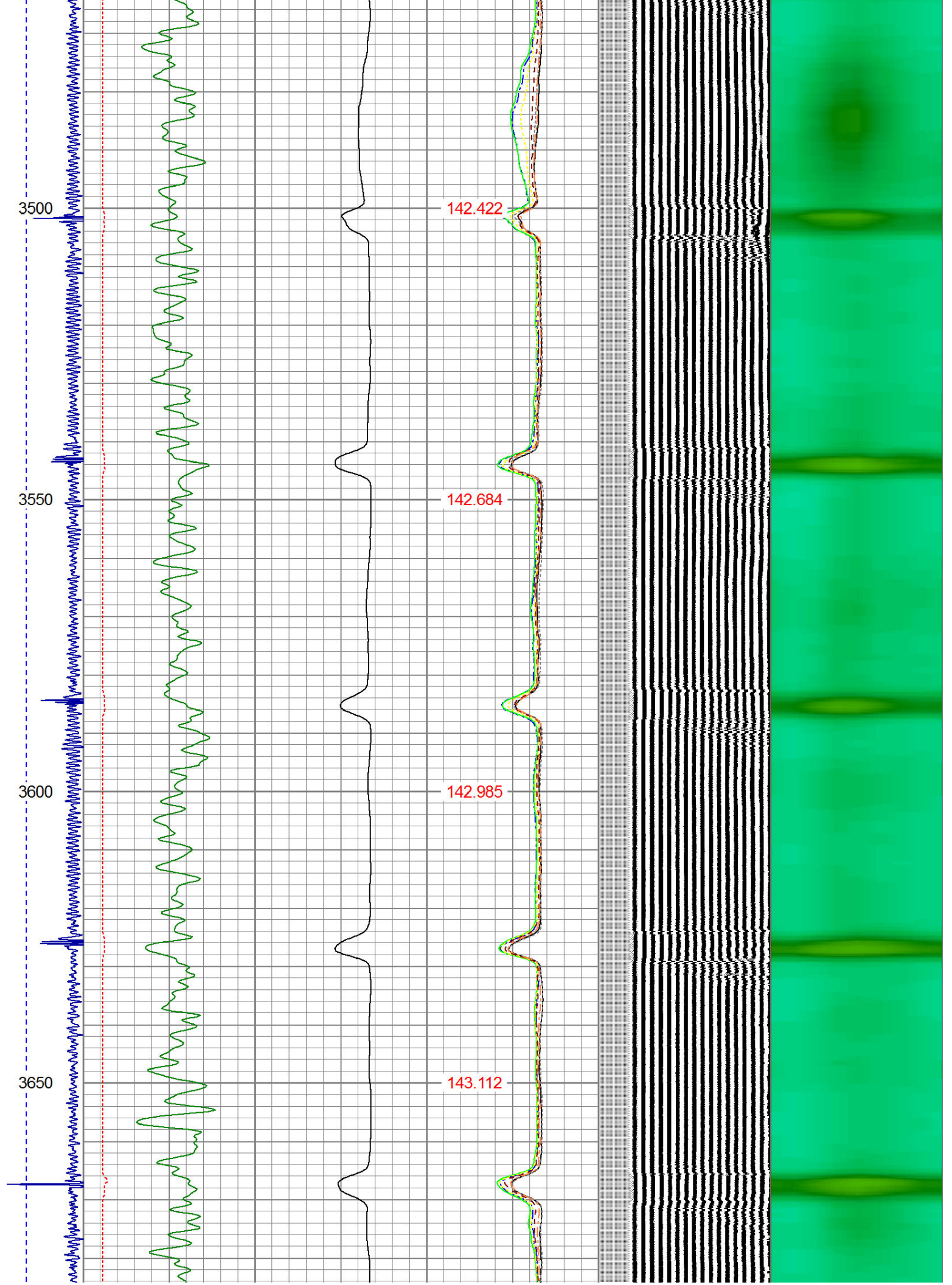




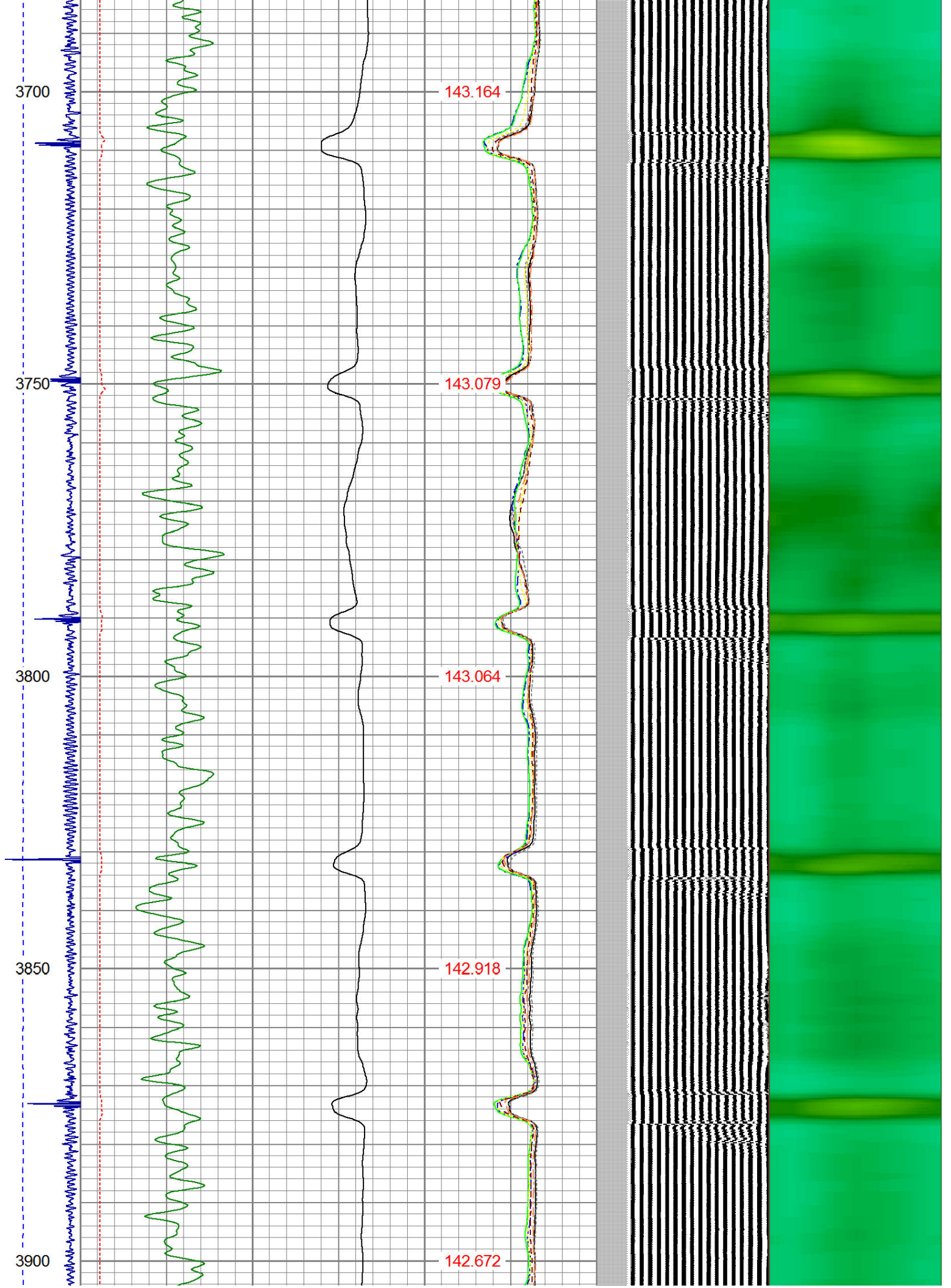




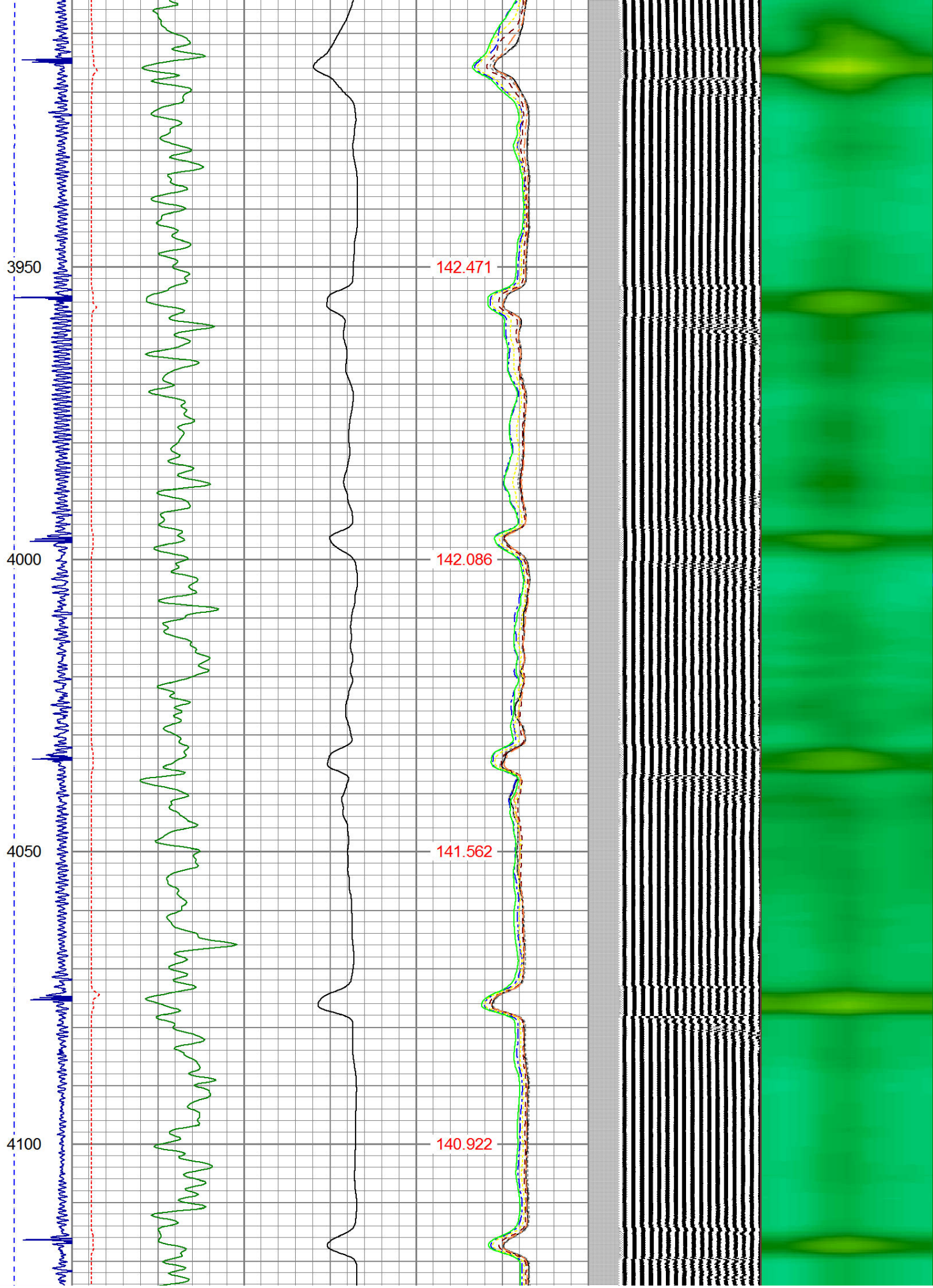




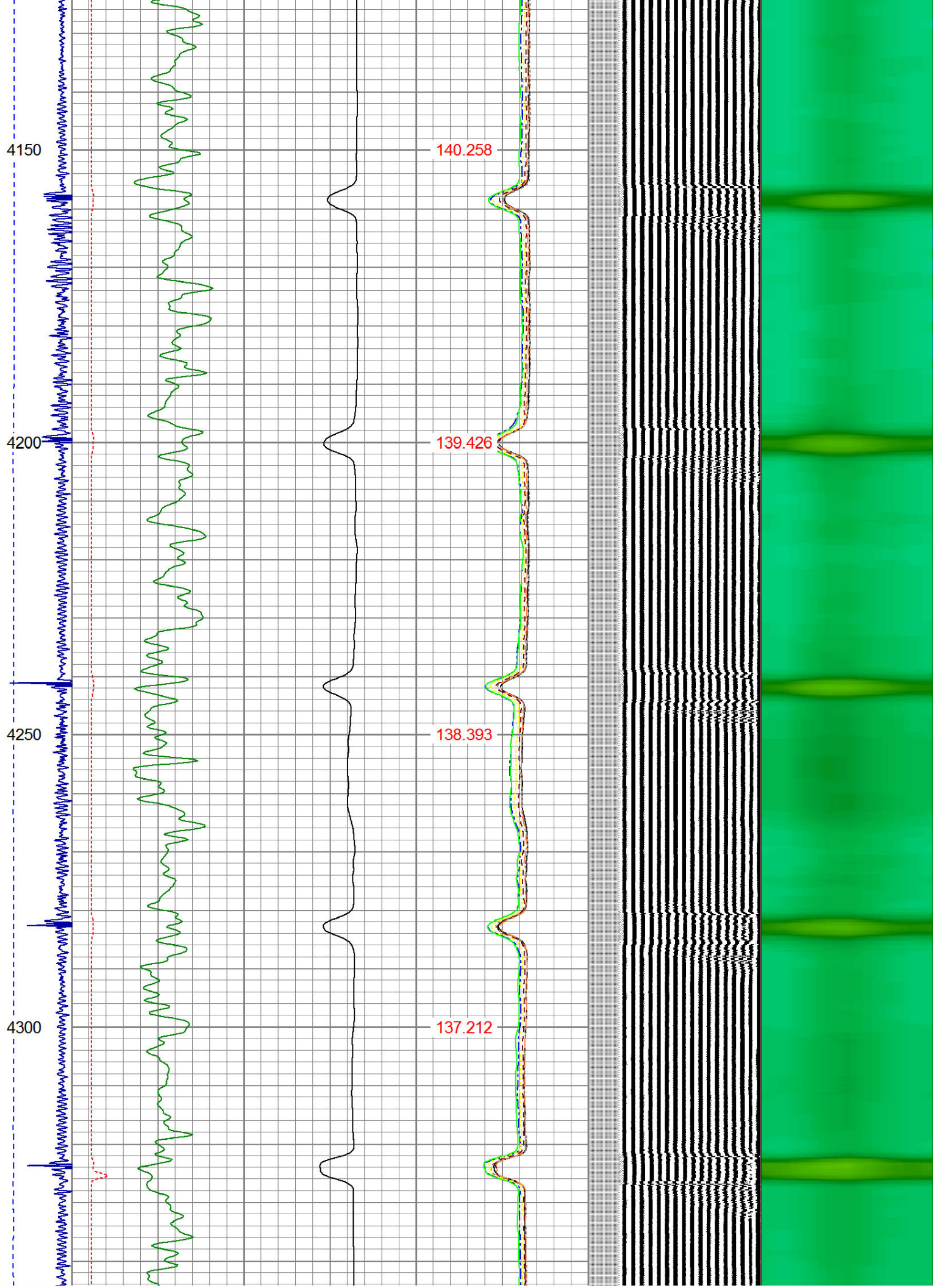




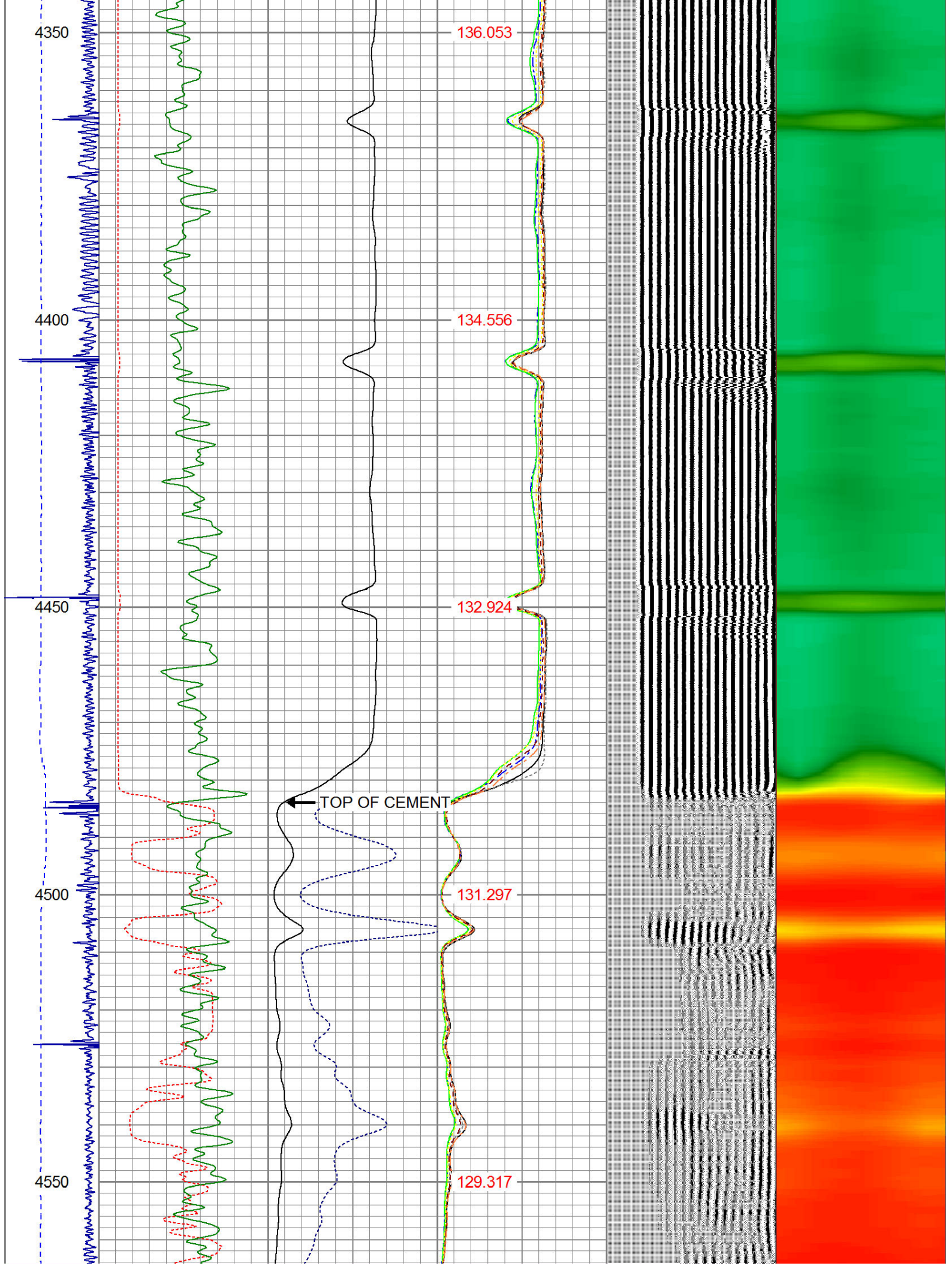




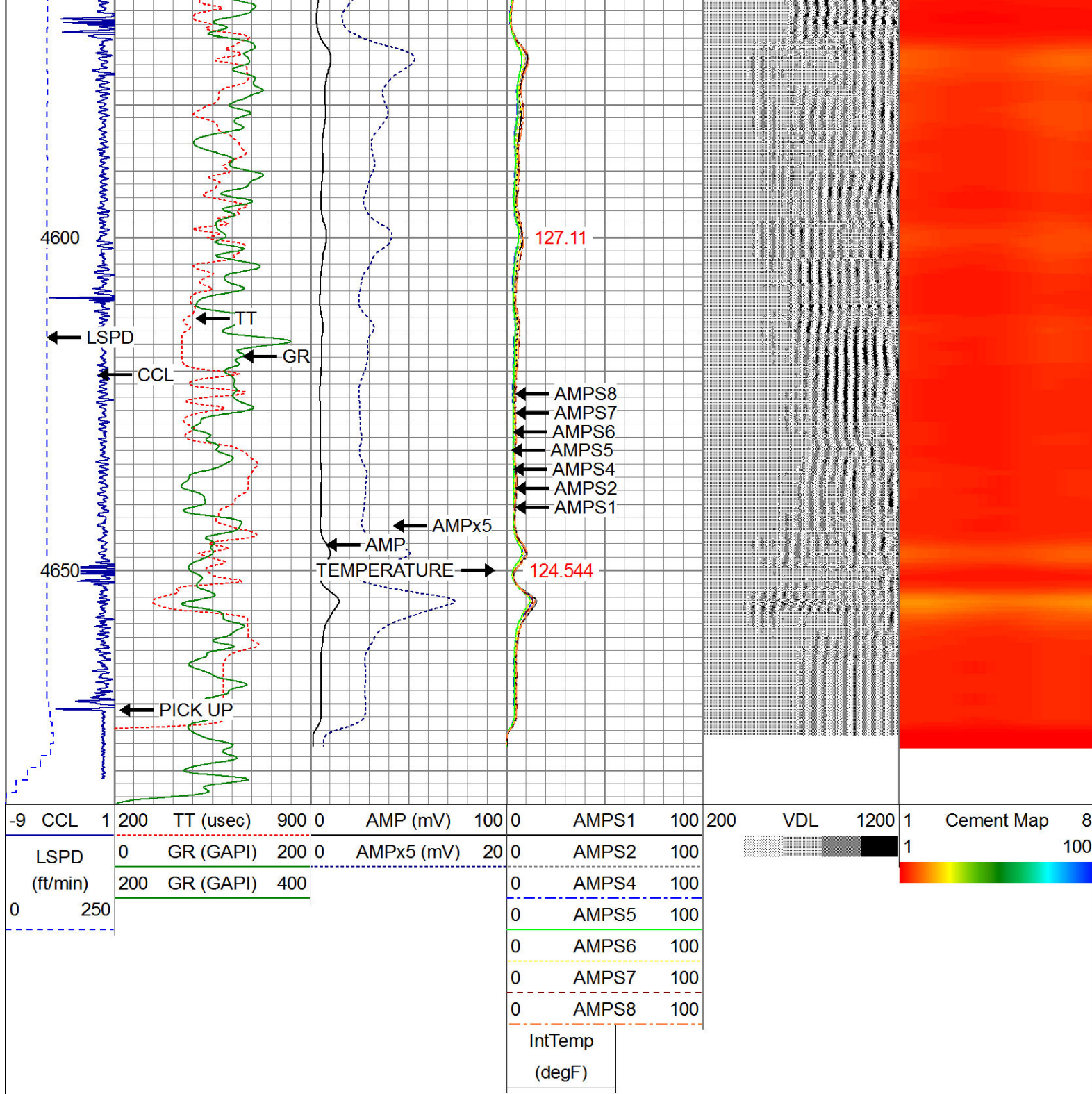












**WARRIOR**  
ENERGY SERVICES

Company KERR McGEE OIL AND GAS

Well UPRR 50 PAN AM D #7

Field WATTENBERG

County WELD

State CO