

EX-100

# HALLIBURTON

iCem<sup>®</sup> Service

**CATAMOUNT ENERGY PARTNERS LLC**

**For: LARRY C.**

Date: Saturday, June 21, 2014

**CAMPBELL 32-7-4 #2**

901447081

Sincerely, ERIC CARTER

## The Road to Excellence Starts with Safety

Sold To #: 367830		Ship To #: 3286213		Quote #:		Sales Order #: 0901447081	
Customer: CATAMOUNT ENERGY PARTNERS LLC				Customer Rep: LARRY C.			
Well Name: CAMPBELL 33-7-4			Well #: 2H		API/UWI #: 05-067-09903-00		
Field: IGNACIO BLANCO		City (SAP): IGNACIO		County/Parish: LA PLATA		State: COLORADO	
Legal Description: SW SW-3-33N-7W-955FSL-1213FWL							
Contractor: AZTEC WELL				Rig/Platform Name/Num: AZTEC 507			
Job BOM: 7522							
Well Type: COAL DE-GAS							
Sales Person: HALAMERICA\HB50180				Srv Supervisor: Eric Carter			
Job							

Formation Name			
Formation Depth (MD)	Top	517 FT.	Bottom 3990 FT.
Form Type			BHST
Job depth MD	3984 ft		Job Depth TVD 1200 FT.
Water Depth			Wk Ht Above Floor 5 FT.
Perforation Depth (MD)	From		To

## Well Data

Description	New / Used	Size in	ID in	Weight lbm/ft	Thread	Grade	Top MD ft	Bottom MD ft	Top TVD ft	Bottom TVD ft
Casing		8.625	8.097	24		H-40	0	517		0
Casing		5.5	4.892	17		J-55	0	3980		0
Open Hole Section			7.875				517	3990	0	0

## Tools and Accessories

Type	Size in	Qty	Make	Depth ft	Type	Size in	Qty	Make
Guide Shoe					Top Plug	5.5	1	HES
Float Shoe					Bottom Plug			
Float Collar					SSR plug set			
Insert Float					Plug Container	5.5	1	HES
Stage Tool					Centralizers		28	

## Miscellaneous Materials

Gelling Agt	Conc	Surfactant	Conc	Acid Type	Qty	Conc
Treatment Fld	Conc	Inhibitor	Conc	Sand Type	Size	Qty

## Fluid Data

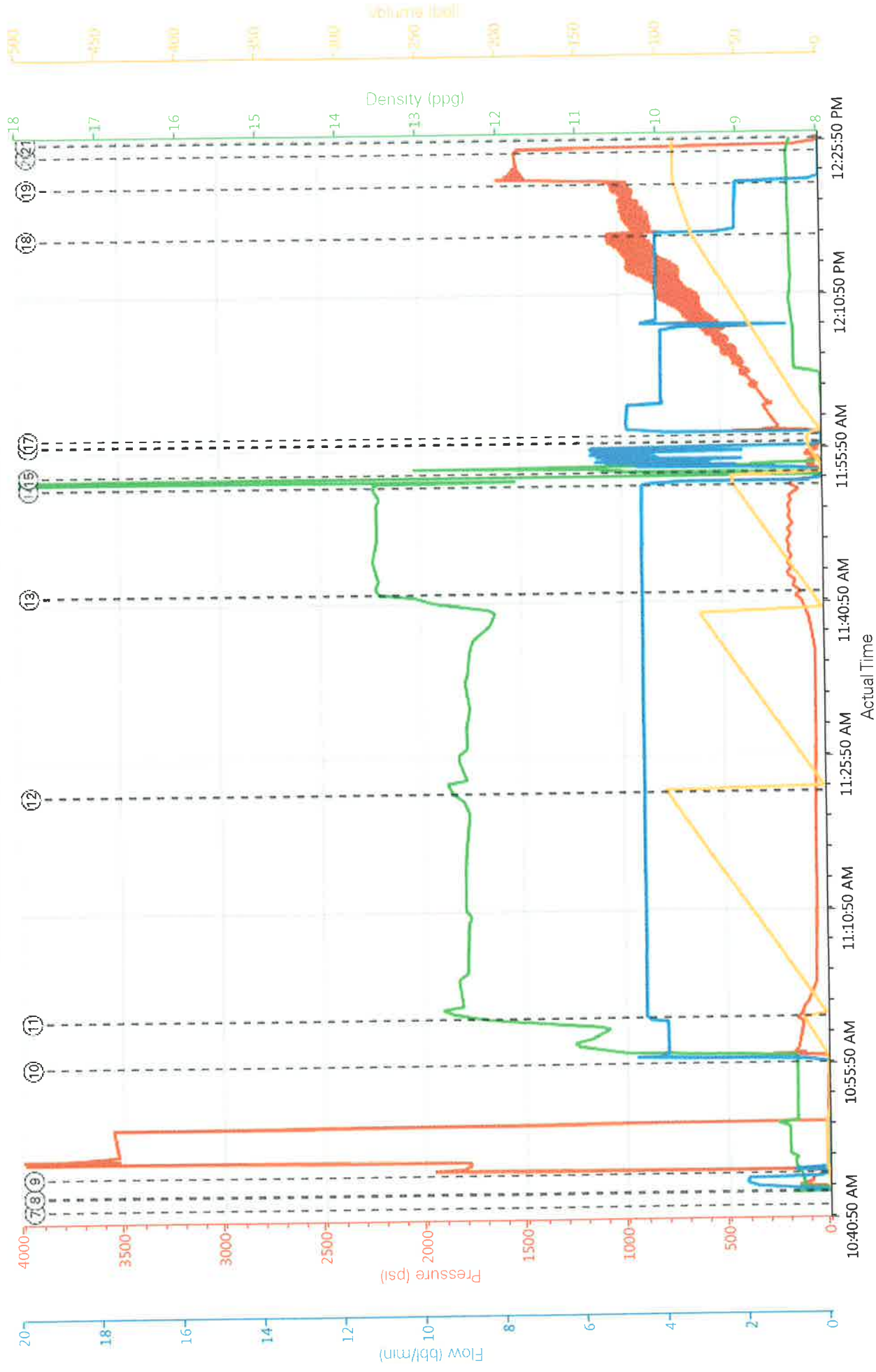
Stage/Plug #: 1										
Fluid #	Stage Type	Fluid Name	Qty	Qty UoM	Mixing Density lbm/gal	Yield ft <sup>3</sup> /sack	Mix Fluid Gal	Rate bbl/min	Total Mix Fluid Gal	
1	10.5 lb/gal Tuned Spacer III	Tuned Spacer III	20	bbl	10.5	4.12	27.61	4		
0.16 gal/bbl		D-AIR 3000L, 5 GAL PAIL (101007444)								
37.58 gal/bbl		FRESH WATER								
88.50 lbm/bbl		BAROID 41 - 50 LB BAG(478095)								

Fluid #	Stage Type	Fluid Name	Qty	Qty UoM	Mixing Density lbm/gal	Yield ft3/sack	Mix Fluid Gal	Rate bbl/min	Total Mix Fluid Gal
2	PRB Lead	HALCEM (TM) SYSTEM	236	sack	12.4	2.36	13.13	4.5	
	94 lbm	CMT - STANDARD TYPE III - FINE , BULK (100012229)							
	13.17 Gal	FRESH WATER							
	0.40 %	FE-2 (100001615)							
	5 lbm	KOL-SEAL, BULK (100064233)							
	0.1250 lbm	POLY-E-FLAKE (101216940)							
Fluid #	Stage Type	Fluid Name	Qty	Qty UoM	Mixing Density lbm/gal	Yield ft3/sack	Mix Fluid Gal	Rate bbl/min	Total Mix Fluid Gal
3	PRB Lead	HALCEM (TM) SYSTEM	175	sack	12.4	2.36	13.2	4.5	
	94 lbm	CMT - STANDARD TYPE III - FINE , BULK (100012229)							
	13.20 Gal	FRESH WATER							
Fluid #	Stage Type	Fluid Name	Qty	Qty UoM	Mixing Density lbm/gal	Yield ft3/sack	Mix Fluid Gal	Rate bbl/min	Total Mix Fluid Gal
4	PRB Tail	HALCEM (TM) SYSTEM	150	sack	13.5	1.86	9.37	4	
	0.50 %	FE-2 (100001615)							
	5 lbm	KOL-SEAL, BULK (100064233)							
	0.1250 lbm	POLY-E-FLAKE (101216940)							
	9.39 Gal	FRESH WATER							
	94 lbm	CMT - STANDARD TYPE III - FINE , BULK (100012229)							
Fluid #	Stage Type	Fluid Name	Qty	Qty UoM	Mixing Density lbm/gal	Yield ft3/sack	Mix Fluid Gal	Rate bbl/min	Total Mix Fluid Gal
5	Displacement		91.4	bbl	11			4	
Cement Left In Pipe    Amount 44.42 ft    Reason    Shoe Joint									
Comment									

## 4.5 Job Event Log

Type	Seq. No.	Activity	Graph Label	Date	Time	Source	Pass-Side Pump Pressure (psi)	Downhole Density (ppg)	Combined Pump Rate (bbl/min)	Pump Stage Total (bbl)	Comment
Event	1	Arrive at Location from Other Job or Site	Arrive at Location from Other Job or Site	6/21/2014	07:30	USER					RIG RUNNING CASING
Event	2	Assessment Of Location Safety Meeting	Assessment Of Location Safety Meeting	6/21/2014	08:20	USER					ATTENDED BY ALL HES CREW
		Other	Other	6/21/2014	08:30						SPOT EQUIPMENT
Event	3	Pre-Rig Up Safety Meeting	Pre-Rig Up Safety Meeting	6/21/2014	08:50	USER					ATTENDED BY ALL HES CREW
Event	4	Rig-Up Equipment	Rig-Up Equipment	6/21/2014	09:00	USER					
		Pre-Job Safety Meeting	Pre-Job Safety Meeting		10:20						ATTENDED BY ALL HES CREW, RIG CREW AND COMPANY REP
Event	5	Start Job	Start Job	6/21/2014	10:43:17	USER					TP 39843.92', TD 3990', MW 9.6 PPG, CASSING 5.5", 17#, J-55, SJ 44.42', SET AT 3980', 28 CENTALOZERS, HOLE 7.875", SURFACE CASING 8.625", 24# SET AT 527',
Event	6	Other	Other	6/21/2014	10:43:55	USER	130	8.33	2	2	SPOT EQUIPMENT
Event	7	Test Lines	Test Lines	6/21/2014	10:45:31	USER					PRESSURED UP TO 3550 PSI, PRESSURE HELD
Event	8	Pump Spacer	Pump Spacer	6/21/2014	10:56:15	USER	165	10.5	4	20	TUNED SPACER III MIXED AT 10.5 PPG,
Event	9	Pump Lead Cement	Pump Lead Cement	6/21/2014	11:00:46	USER	130	12.4	4.5	99.2	236 SKS HALCEM MIXED AT 12.4 PPG, 2.36 YIELD, 13.13 GL/SK
Event	10	Pump Lead Cement	Pump Lead Cement	6/21/2014	11:22:38	USER	120	12.4	4.5	73.6	175 SKS HALCEM MIXED AT 12.4 PPG, 2.36 YIELD, 13.2 GL/SK
Event	11	Pump Tail Cement	Pump Tail Cement	6/21/2014	11:41:35	USER	170	13.5	4.5	49.7	150 SKS HALCEM MIXED AT 13.5 PPG, 1.86 YIELD, 9.37 GL/SK

# CATAMOUNT - CAMPBELL 32-7-4 #2 - INTERMEDIATE



PS Pump Press (psi) DH Density (ppg) Comb Pump Rate (bbl/min) Pump Stg Tot (bbl)