

HALLIBURTON

iCem[®] Service

CATAMOUNT ENERGY PARTNERS LLC

For:

Date: Wednesday, June 11, 2014

CAMBELL 33-7-4 #1

Case 1

Sincerely,

The Road to Excellence Starts with Safety

Sold To #: 367830	Ship To #: 3286213	Quote #: 0021869228	Sales Order #: 0901418567
Customer: CATAMOUNT ENERGY PARTNERS LLC		Customer Rep:	
Well Name: CAMPBELL 33-7-4	Well #: H	API/UWI #: 05-067-09901-00	
Field: IGNACIO BLANCO	City (SAP): IGN	County/Parish: LA PLATA	State: COLORADO
Legal Description: SW SW-3-33N-7W-955FSL-1243FWL			
Contractor: AZTEC WELL		Rig/Platform Name/Num: AZTEC 507	
Job BOM: 7521			
Well Type: COAL DE-GAS			
Sales Person: HALAMERICA\HB50180		Srv Supervisor: Andrew Brennecke	
Job			

Formation Name	
Formation Depth (MD)	Top
Form Type	Bottom
Job depth MD	BHST
Water Depth	Job Depth TVD
Perforation Depth (MD)	Wk Ht Above Floor 5
	To

Well Data

Description	New / Used	Size in	ID in	Weight lbm/ft	Thread	Grade	Top MD ft	Bottom MD ft	Top TVD ft	Bottom TVD ft
Casing		16	15.25	65			0	60		
Casing		8.625	8.097	24		J-55	0	522		0
Open Hole Section			12.25				60	522		0

Tools and Accessories

Type	Size in	Qty	Make	Depth ft	Type	Size in	Qty	Make
Guide Shoe	8.625	1		522	Top Plug	8.625	1	HES
Float Shoe					Bottom Plug			
Float Collar	8.625	1		478	SSR plug set			
Insert Float					Plug Container	8.625	1	HES
Stage Tool					Centralizers			

Miscellaneous Materials

Gelling Agt	Conc	Surfactant	Conc	Acid Type	Qty	Conc
Treatment Fld	Conc	Inhibitor	Conc	Sand Type	Size	Qty

Fluid Data

Stage/Plug #: 1

Fluid #	Stage Type	Fluid Name	Qty	Qty UoM	Mixing Density lbm/gal	Yield ft3/sack	Mix Fluid Gal	Rate bbl/min	Total Mix Fluid Gal
1	Fresh Water	Fresh Water	20	bbl	8.3			4	

Fluid #	Stage Type	Fluid Name	Qty	Qty UoM	Mixing Density lbm/gal	Yield ft3/sack	Mix Fluid Gal	Rate bbl/min	Total Mix Fluid Gal
2	HalCem Lead	HALCEM (TM) SYSTEM	345	sack	15.8	1.174		4	5.13

HALLIBURTON

Cementing Job Summary

5.13 Gal		FRESH WATER							
0.1250 lbm		POLY-E-FLAKE (101216940)							
2 %		CALCIUM CHLORIDE, PELLET, 50 LB (101509387)							
Fluid #	Stage Type	Fluid Name	Qty	Qty UoM	Mixing Density lbm/gal	Yield ft ³ /sack	Mix Fluid Gal	Rate bbl/min	Total Mix Fluid Gal
3	HalCem Tail	HALCEM (TM) SYSTEM	60	sack	15.8	1.177		4	5.14
0.1250 lbm		POLY-E-FLAKE (101216940)							
0.30 %		SUPER CBL, 50 LB PAIL (100003668)							
5.14 Gal		FRESH WATER							
2 %		CALCIUM CHLORIDE, PELLET, 50 LB (101509387)							
Fluid #	Stage Type	Fluid Name	Qty	Qty UoM	Mixing Density lbm/gal	Yield ft ³ /sack	Mix Fluid Gal	Rate bbl/min	Total Mix Fluid Gal
4	Displacement		30.6	bbl	9			4	
Cement Left In Pipe		Amount	42.13 ft		Reason		Shoe Joint		
Comment									

1.1 Job Event Log

Type	Seq. No.	Activity	Graph Label	Date	Time	Source	DH Density (ppg)	Comb Pump Rate (bbl/min)	PS Pump Press (psi)	Pump Stg Tot (bbl)	Comment
Event	1	Rig-Up Completed	Rig-Up Completed	6/10/2014	02:00:00	USER					1-RED TIGER,2-660 BULK TRUCK, 2 " IRON, 1-8-625" QUICK LATCH
Event	2	Pre-Job Safety Meeting	Pre-Job Safety Meeting	6/10/2014	02:15:00	USER					ALL HES AND RIG CREW PRESENT
Event	3	Call Out	Call Out	6/10/2014	16:00:00	USER					
Event	4	Pre-Convoy Safety Meeting	Pre-Convoy Safety Meeting	6/10/2014	18:45:00	USER					ALL HES PRESENT
Event	5	Crew Leave Yard	Crew Leave Yard	6/10/2014	19:00:00	USER					
Event	6	Arrive At Loc	Arrive At Loc	6/10/2014	20:00:00	USER					RIG HAD NOT STARTED CASING YET
Event	7	Start Job	Start Job	6/11/2014	02:30:50	COM5	8.38	0.00	-3.00	0.0	TD-522', TP-522', SJ-42.13', OH-12.25, MUD-9.1PPG, CSG-8.625" 24# J-55
Event	8	Prime Pumps	Prime Pumps	6/11/2014	02:32:04	COM5	8.33	1.60	30.00	2.1	FRESH WATER
Event	9	Test Lines	Test Lines	6/11/2014	02:38:43	COM5	8.37	0.00	2948.00	2.2	PRESSURE HELD AT 2948 psi
Event	10	Pump Spacer 1	Pump Spacer 1	6/11/2014	02:42:24	COM5	8.38	1.80	77.00	20.0	FRESH WATER
Event	11	Pump Lead Cement	Pump Lead Cement	6/11/2014	02:49:57	COM5	15.80	4.00	128.00	72.1	345SKS, 15.8PPG, 1.174FT3/SK, 5.13GAL/SK
Event	12	Pump Tail Cement	Pump Tail Cement	6/11/2014	03:06:39	COM5	15.88	4.00	132.00	12.6	60SKS, 15.8PPG, 1.177FT3/SK, 5.14GAL/SK
Event	13	Shutdown	Shutdown	6/11/2014	03:11:20	USER	15.88	0.00	20.00	0.00	
Event	14	Drop Top Plug	Drop Top Plug	6/11/2014	03:12:45	COM5	13.47	0.00	13.00	0.00	PLUG DROP VERIFIED BY TATTLE TAIL
Event	15	Pump Displacement	Pump Displacement	6/11/2014	03:13:05	COM5	8.33	4.00	189.00	20.5	FRESH WATER
Event	16	Slow Rate	Slow Rate	6/11/2014	03:19:02	USER	8.33	2.00	157.00	10.0	
Event	17	Bump Plug	Bump Plug	6/11/2014	03:22:51	USER	8.33	2.00	203.00	31.5	
Event	18	Check Floats	Check Floats	6/11/2014	03:24:56	USER	8.33	0.00	1000.00	31.5	.58BL BACK TO DISPLACEMENT TANK, FOATS HELD

HALLIBURTON

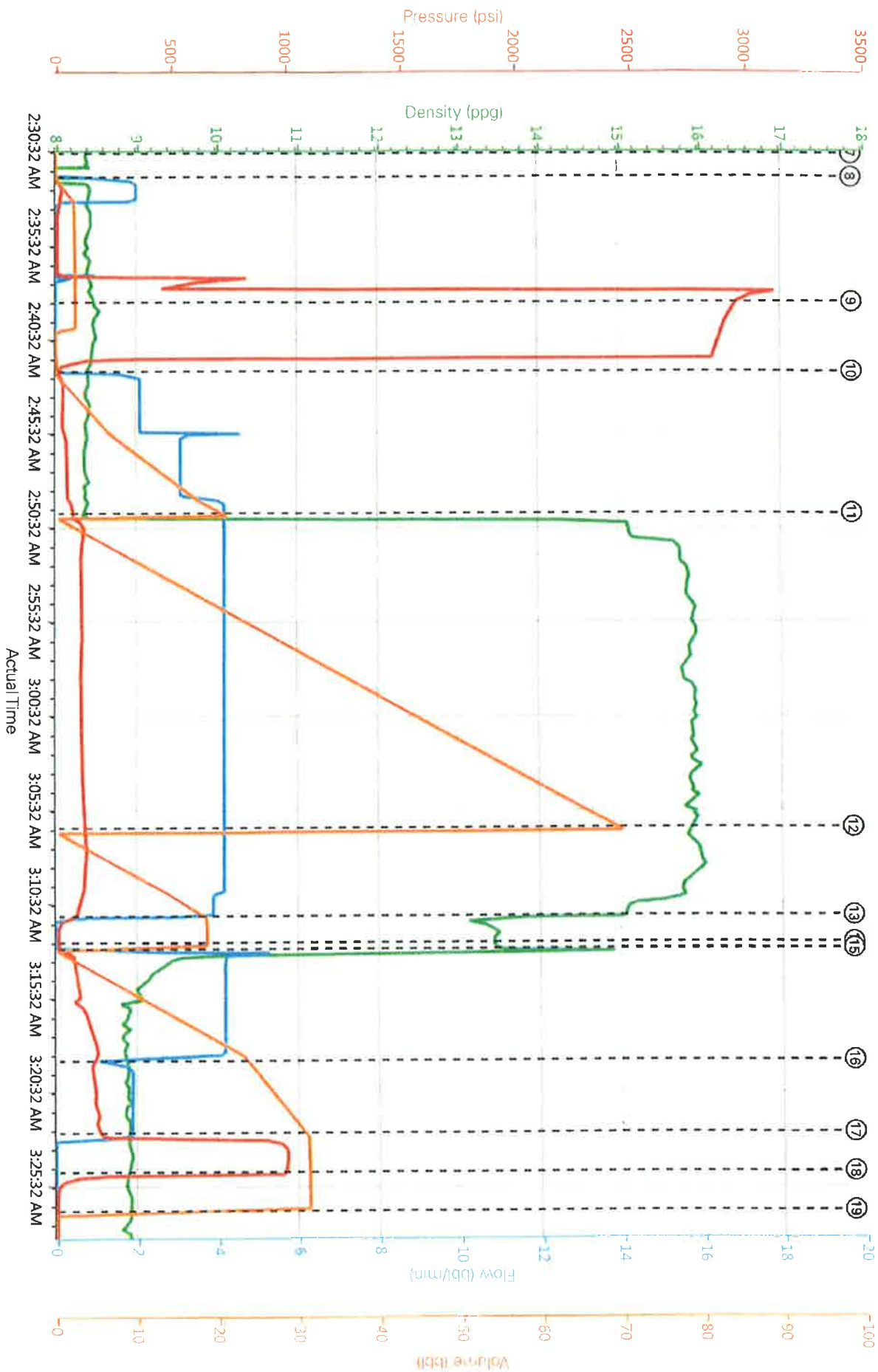
CATAMOUNT ENERGY PARTNERS LLC

901418567

Case 1

Event	19	End Job	End Job	6/11/2014	03:27:00	COM5	8.94	0.00	7.00	2.0	45 BBL CEMENT TO SURFACE
Event	20	Crew Leave Location	Crew Leave Location	6/11/2014	04:30:00	USER					THANK YOU FOR CHOOSING HALLIBURTON, ANDREW BRENNECKE AND CREW

CATAMOUNT - CAMBELL 33-7-4 #1 - 8.625" SURFACE



DH Density (ppg) Comb Pump Rate (bbl/min) PS Pump Press (psi) Pump Stg Tot (bbl)

HALLIBURTON | iCem® Service

Created: 2014-06-10 22:07:21, Version: 3.0.121

[Edit](#)

Customer : CATAMOUNT ENERGY PARTNERS LLC
Representative : LARRY CANDELARIA

Job Date : 6/11/2014 1:37:53 AM
Sales Order # : 901418667

Well : CAMBELL 33-7-4 #1
REDTIGER : A.BRENNECKE/JETCITY