

Company  
Southwestern Production Corp.

Well  
Nicholas #1

Field  
Wattenberg

County  
Weld

State  
Colorado

Location  
1983 FEL & 1997 FSL  
NW SE  
Sec - 31, Twp - 4N, Rge - 68W

City  
Fort Collins

Field  
Weld

County  
Weld

State  
Colorado

Location  
1983 FEL & 1997 FSL  
NW SE  
Sec - 31, Twp - 4N, Rge - 68W

City  
Fort Collins

Field  
Weld

County  
Weld

State  
Colorado

Location  
1983 FEL & 1997 FSL  
NW SE  
Sec - 31, Twp - 4N, Rge - 68W

City  
Fort Collins

Field  
Weld

County  
Weld

State  
Colorado

Location  
1983 FEL & 1997 FSL  
NW SE  
Sec - 31, Twp - 4N, Rge - 68W

City  
Fort Collins

Field  
Weld

County  
Weld

State  
Colorado

Location  
1983 FEL & 1997 FSL  
NW SE  
Sec - 31, Twp - 4N, Rge - 68W

City  
Fort Collins

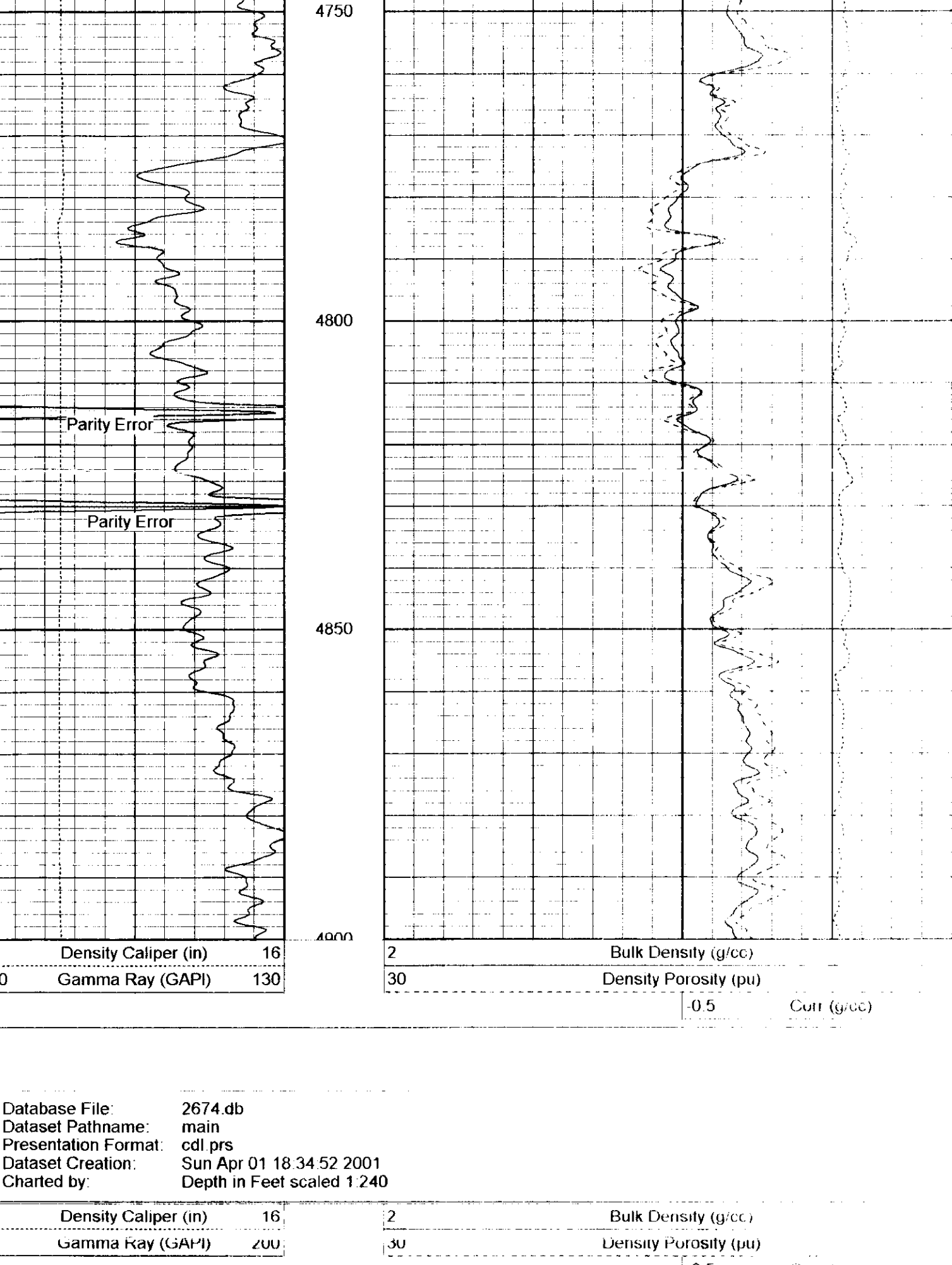
**DO NOT REMOVE**

All interpretations are opinions based on inferences from electrical or other measurements and we cannot and do not guarantee the accuracy or correctness of any interpretation, and we shall not, except in the case of gross or willful negligence on our part, be liable or responsible for any loss, claims, damages or expenses incurred or sustained by anyone resulting from any interpretation made by any of our officers, agents or employees. These interpretations are also subject to our general terms and conditions set out in our current Price Schedule.

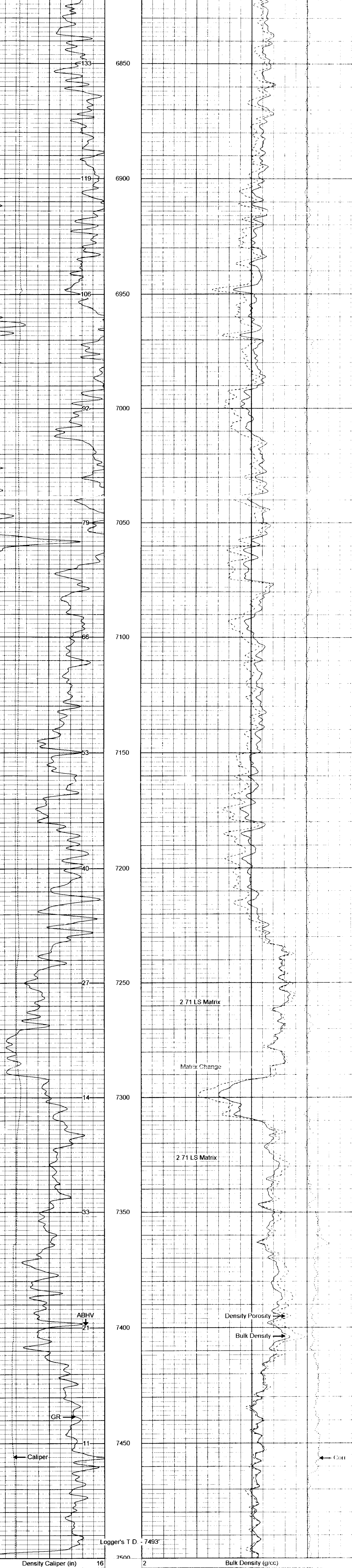
Comments

Thank you for using Phoenix Surveys.  
Fort Drilling, LLC  
Annular volume calculated for 4 1/2" casing  
Parity Errors as marked due to communication error while logging

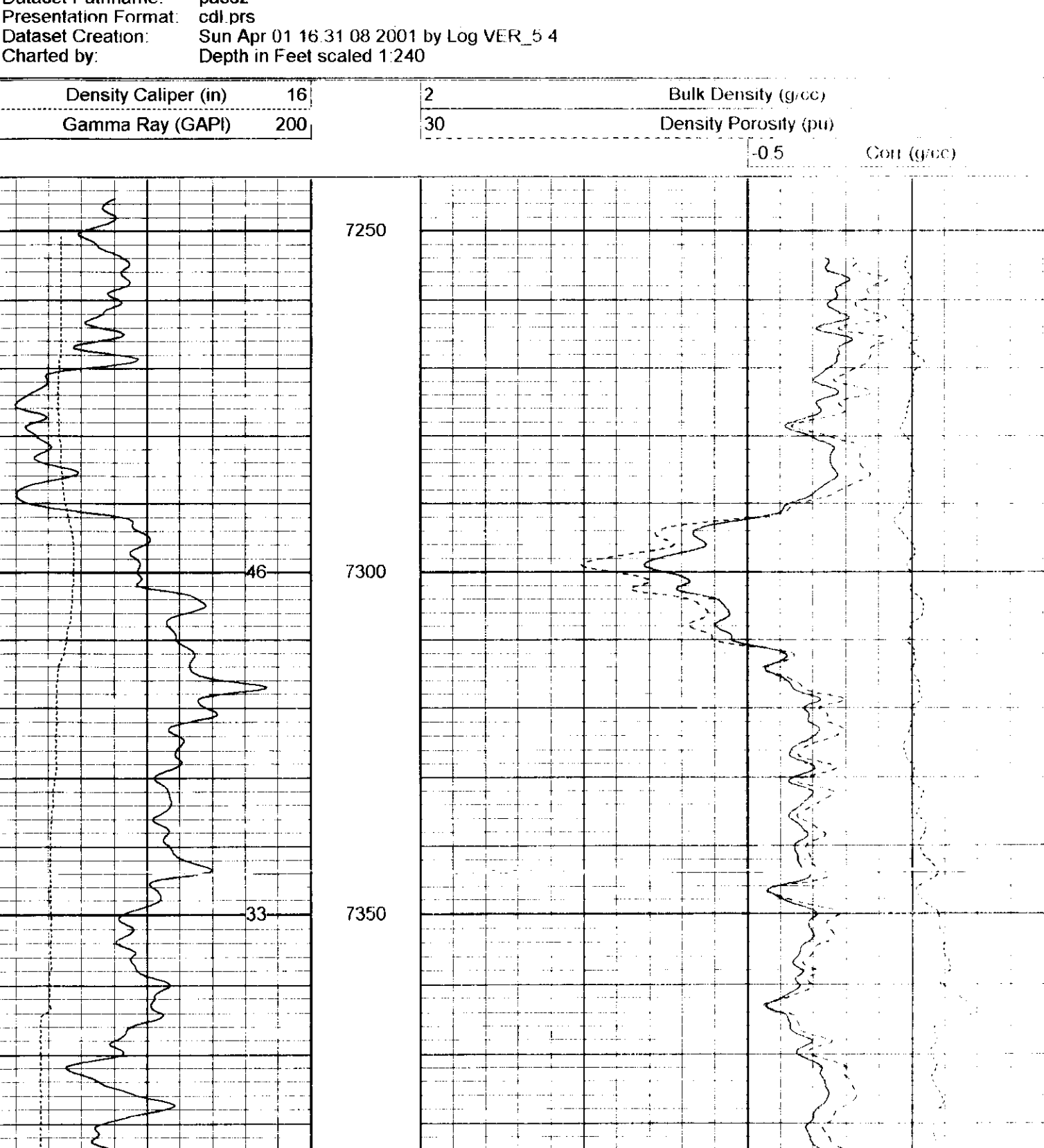
Database File: 2674 db  
Dataset Pathname: main  
Presentation Format: cdl prs  
Dataset Creation: Sun Apr 01 18:34:52 2001  
Charted by: Depth in Feet scaled 1240



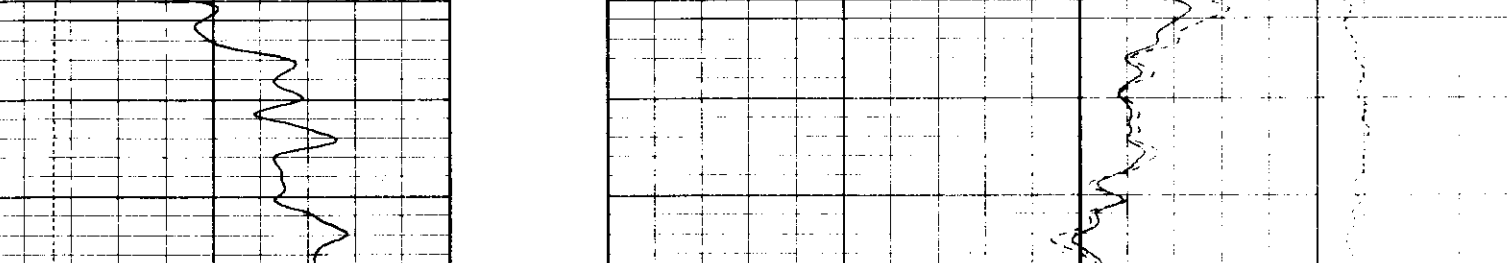
Database File: 2674 db  
Dataset Pathname: main  
Presentation Format: cdl prs  
Dataset Creation: Sun Apr 01 18:34:52 2001  
Charted by: Depth in Feet scaled 1240



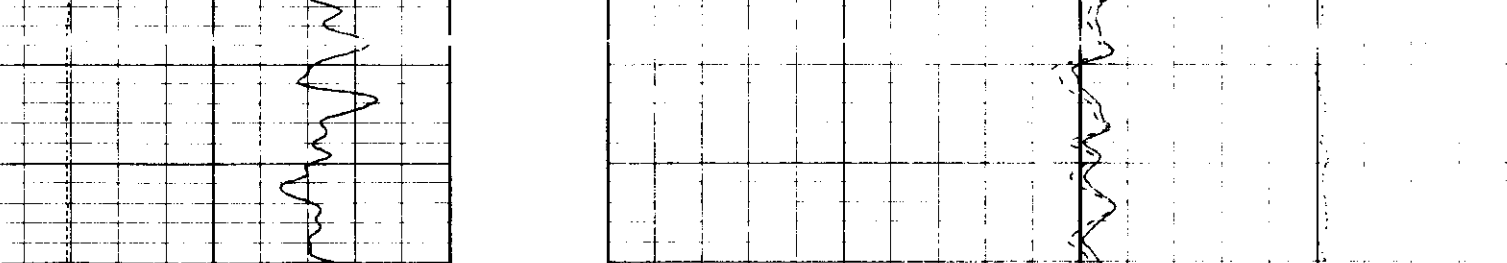
Database File: 2674 db  
Dataset Pathname: pass2  
Presentation Format: cdl prs  
Dataset Creation: Sun Apr 01 16:31:08 2001 by Log VER\_5\_4  
Charted by: Depth in Feet scaled 1240



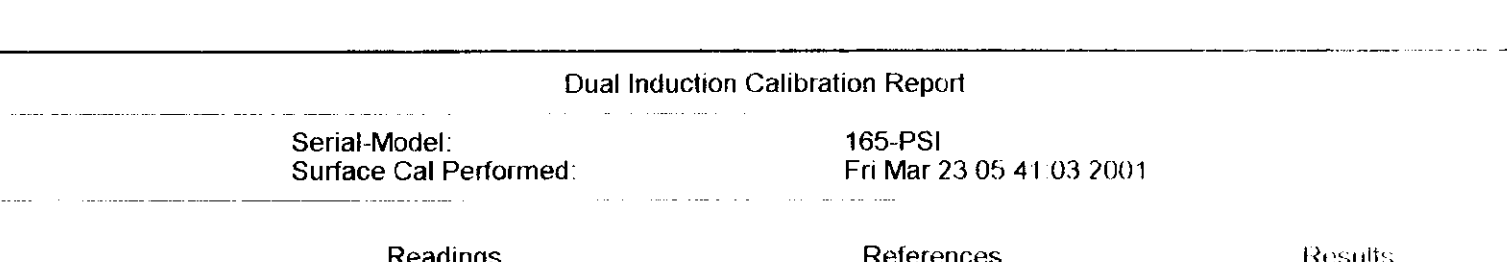
Database File: 2674 db  
Dataset Pathname: pass2  
Presentation Format: cdl prs  
Dataset Creation: Sun Apr 01 16:31:08 2001 by Log VER\_5\_4  
Charted by: Depth in Feet scaled 1240



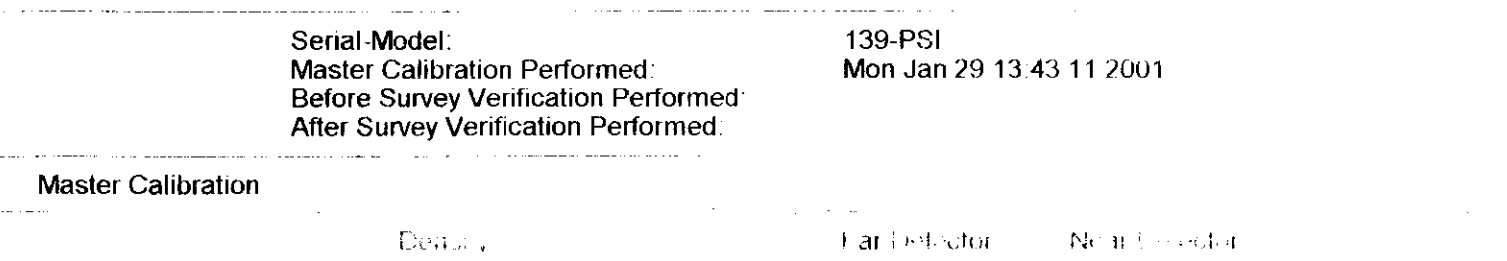
Database File: 2674 db  
Dataset Pathname: pass2  
Presentation Format: cdl prs  
Dataset Creation: Sun Apr 01 16:31:08 2001 by Log VER\_5\_4  
Charted by: Depth in Feet scaled 1240



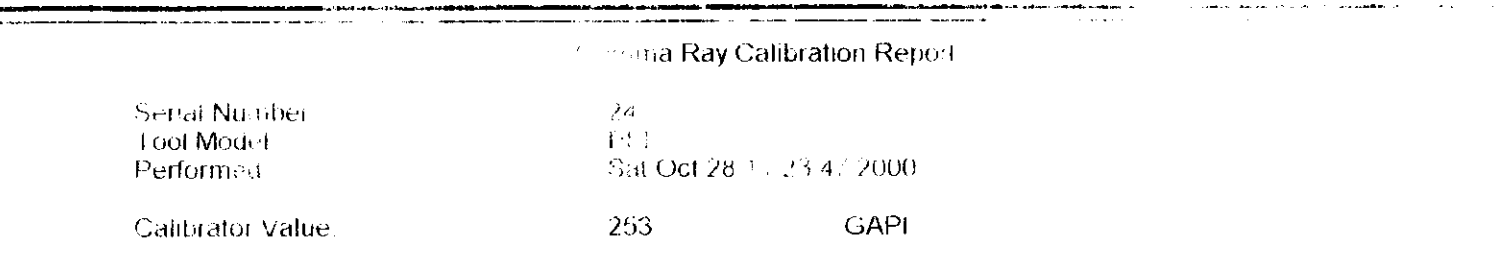
Database File: 2674 db  
Dataset Pathname: pass2  
Presentation Format: cdl prs  
Dataset Creation: Sun Apr 01 16:31:08 2001 by Log VER\_5\_4  
Charted by: Depth in Feet scaled 1240



Database File: 2674 db  
Dataset Pathname: pass2  
Presentation Format: cdl prs  
Dataset Creation: Sun Apr 01 16:31:08 2001 by Log VER\_5\_4  
Charted by: Depth in Feet scaled 1240



Database File: 2674 db  
Dataset Pathname: pass2  
Presentation Format: cdl prs  
Dataset Creation: Sun Apr 01 16:31:08 2001 by Log VER\_5\_4  
Charted by: Depth in Feet scaled 1240



Database File: 2674 db  
Dataset Pathname: pass2  
Presentation Format: cdl prs  
Dataset Creation: Sun Apr 01 16:31:08 2001 by Log VER\_5\_4  
Charted by: Depth in Feet scaled 1240



Database File: 2674 db  
Dataset Pathname: pass2  
Presentation Format: cdl prs  
Dataset Creation: Sun Apr 01 16:31:08 2001 by Log VER\_5\_4  
Charted by: Depth in Feet scaled 1240