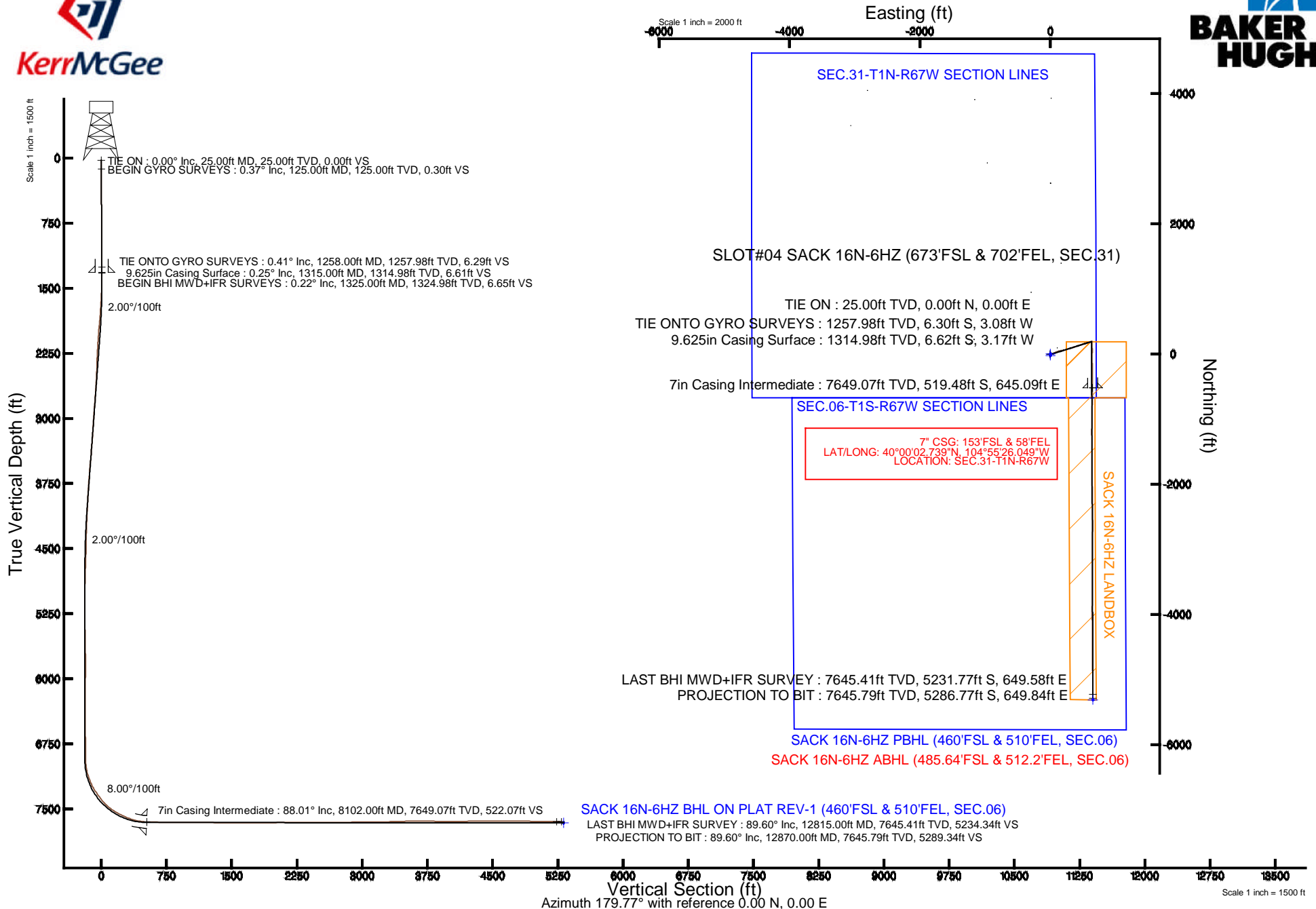


# KERR-MCGEE OIL & GAS ONSHORE LP

Location: COLORADO Slot: SLOT#04 SACK 16N-6HZ (673'FSL & 702'FEL, SEC.31)  
 Field: WELD COUNTY (KERR MCGEE) Well: SACK 16N-6HZ  
 Facility: SEC.31-T1N-R67W Wellbore: SACK 16N-6HZ PWB

Plot reference wellpath is SACK 16N-6HZ (REV-D.0) PWP

True vertical depths are referenced to PRECISION 595 (25'KB) (RKB)	Grid System: NAD83 / Lambert Colorado SP, Northern Zone (501), US feet
Measured depths are referenced to PRECISION 595 (25'KB) (RKB)	North Reference: True north
PRECISION 595 (25'KB) (RKB) to Mean Sea Level: 5080 feet	Scale: True distance
Mean Sea Level to Mud line (At Slot: SLOT#04 SACK 16N-6HZ (673'FSL & 702'FEL, SEC.31)): 0 feet	Depths are in feet
Coordinates are in feet referenced to Slot	Created by: robiale01 on 10/1/2014



REFERENCE WELLPATH IDENTIFICATION			
Operator	KERR-MCGEE OIL & GAS ONSHORE LP	Slot	SLOT#04 SACK 16N-6HZ (673'FSL & 702'FEL, SEC.31)
Area	COLORADO	Well	SACK 16N-6HZ
Field	WELD COUNTY (KERR MCGEE)	Wellbore	SACK 16N-6HZ AWB
Facility	SEC.31-T1N-R67W		

REPORT SETUP INFORMATION			
Projection System	NAD83 / Lambert Colorado SP, Northern Zone (501), US feet	Software System	WellArchitect® 4.0.0
North Reference	True	User	Robiale01
Scale	0.999966	Report Generated	10/1/2014 at 3:08:08 PM
Convergence at slot	n/a	Database/Source file	WellArchitectDB/SACK_16N-6HZ_AWB.xml

WELLPATH LOCATION						
	Local coordinates		Grid coordinates		Geographic coordinates	
	North[ft]	East[ft]	Easting[US ft]	Northing[US ft]	Latitude	Longitude
Slot Location	-152.42	3681.78	3160744.45	1244163.55	40°00'07.873"N	104°55'34.338"W
Facility Reference Pt			3157061.92	1244292.69	40°00'09.382"N	104°56'21.649"W
Field Reference Pt			3197771.84	1268891.29	40°04'09.600"N	104°47'36.000"W

WELLPATH DATUM			
Calculation method	Minimum curvature	PRECISION 595 (25'KB) (RKB) to Facility Vertical Datum	5080.00ft
Horizontal Reference Pt	Slot	PRECISION 595 (25'KB) (RKB) to Mean Sea Level	5080.00ft
Vertical Reference Pt	PRECISION 595 (25'KB) (RKB)	PRECISION 595 (25'KB) (RKB) to Mud Line at Slot (SLOT#04 SACK 16N-6HZ (673'FSL & 702'FEL, SEC.31))	5080.00ft
MD Reference Pt	PRECISION 595 (25'KB) (RKB)	Section Origin	N 0.00, E 0.00 ft
Field Vertical Reference	Mean Sea Level	Section Azimuth	172.99°

# Actual Wellpath Report

SACK 16N-6HZ AWP

Page 2 of 6

REFERENCE WELLPATH IDENTIFICATION			
Operator	KERR-MCGEE OIL & GAS ONSHORE LP	Slot	SLOT#04 SACK 16N-6HZ (673'FSL & 702'FEL, SEC.31)
Area	COLORADO	Well	SACK 16N-6HZ
Field	WELD COUNTY (KERR MCGEE)	Wellbore	SACK 16N-6HZ AWB
Facility	SEC.31-T1N-R67W		

WELLPATH DATA (128 stations) † = interpolated/extrapolated station										
MD [ft]	Inclination [°]	Azimuth [°]	TVD [ft]	Vert Sect [ft]	North [ft]	East [ft]	Latitude	Longitude	DLS [°/100ft]	Comments
0.00†	0.000	198.940	0.00	0.00	0.00	0.00	40°00'07.873"N	104°55'34.338"W	0.00	
25.00	0.000	198.940	25.00	0.00	0.00	0.00	40°00'07.873"N	104°55'34.338"W	0.00	TIE ON
125.00	0.370	198.940	125.00	0.29	-0.31	-0.10	40°00'07.870"N	104°55'34.339"W	0.37	BEGIN GYRO SURVEYS
225.00	0.310	242.370	225.00	0.68	-0.74	-0.45	40°00'07.866"N	104°55'34.344"W	0.26	
325.00	0.410	221.110	325.00	1.01	-1.13	-0.92	40°00'07.862"N	104°55'34.350"W	0.17	
425.00	0.340	199.640	424.99	1.51	-1.68	-1.26	40°00'07.856"N	104°55'34.354"W	0.16	
525.00	0.390	195.820	524.99	2.09	-2.29	-1.45	40°00'07.850"N	104°55'34.357"W	0.06	
625.00	0.290	202.390	624.99	2.63	-2.85	-1.64	40°00'07.845"N	104°55'34.359"W	0.11	
725.00	0.340	188.140	724.99	3.13	-3.38	-1.78	40°00'07.840"N	104°55'34.361"W	0.09	
825.00	0.290	186.890	824.99	3.67	-3.92	-1.85	40°00'07.834"N	104°55'34.362"W	0.05	
925.00	0.400	193.090	924.99	4.24	-4.51	-1.96	40°00'07.828"N	104°55'34.363"W	0.12	
1025.00	0.350	215.980	1024.98	4.79	-5.10	-2.22	40°00'07.823"N	104°55'34.367"W	0.16	
1125.00	0.390	232.180	1124.98	5.19	-5.56	-2.67	40°00'07.818"N	104°55'34.372"W	0.11	
1225.00	0.380	194.160	1224.98	5.67	-6.09	-3.02	40°00'07.813"N	104°55'34.377"W	0.25	
1258.00	0.410	197.350	1257.98	5.88	-6.30	-3.08	40°00'07.811"N	104°55'34.378"W	0.11	TIE ONTO GYRO SURVEYS
1325.00	0.220	193.410	1324.98	6.22	-6.66	-3.18	40°00'07.807"N	104°55'34.379"W	0.29	BEGIN BHI MWD+IFR SURVEYS
1355.00	0.220	211.550	1354.98	6.32	-6.76	-3.22	40°00'07.806"N	104°55'34.379"W	0.23	
1385.00	2.080	81.450	1384.97	6.35	-6.73	-2.72	40°00'07.806"N	104°55'34.373"W	7.43	
1415.00	5.050	79.300	1414.91	6.25	-6.41	-0.88	40°00'07.810"N	104°55'34.349"W	9.91	
1472.00	5.970	77.730	1471.65	5.82	-5.31	4.48	40°00'07.821"N	104°55'34.280"W	1.64	
1567.00	8.430	70.110	1565.89	3.81	-1.89	15.86	40°00'07.854"N	104°55'34.134"W	2.77	
1662.00	8.670	66.650	1659.84	0.24	3.32	28.98	40°00'07.906"N	104°55'33.966"W	0.60	
1756.00	10.230	68.310	1752.56	-3.87	9.21	43.24	40°00'07.964"N	104°55'33.782"W	1.68	
1851.00	11.270	64.690	1845.89	-8.92	16.30	59.47	40°00'08.034"N	104°55'33.574"W	1.30	
1946.00	11.380	62.740	1939.04	-15.08	24.56	76.20	40°00'08.116"N	104°55'33.359"W	0.42	
2041.00	11.260	67.960	2032.19	-20.73	32.33	93.13	40°00'08.193"N	104°55'33.141"W	1.09	
2135.00	12.120	74.390	2124.25	-24.59	38.43	111.14	40°00'08.253"N	104°55'32.910"W	1.66	
2230.00	11.890	74.310	2217.17	-27.55	43.76	130.17	40°00'08.305"N	104°55'32.665"W	0.24	
2324.00	12.370	79.960	2309.07	-29.55	48.14	149.40	40°00'08.349"N	104°55'32.418"W	1.36	
2419.00	11.440	81.190	2402.03	-30.38	51.35	168.73	40°00'08.380"N	104°55'32.170"W	1.01	
2514.00	12.900	79.930	2494.89	-31.25	54.65	188.49	40°00'08.413"N	104°55'31.916"W	1.56	
2609.00	15.110	77.300	2587.06	-33.04	59.23	211.01	40°00'08.458"N	104°55'31.627"W	2.42	
2703.00	14.030	77.090	2678.04	-35.43	64.47	234.07	40°00'08.510"N	104°55'31.330"W	1.15	
2798.00	13.690	68.230	2770.28	-39.48	71.21	255.74	40°00'08.577"N	104°55'31.052"W	2.26	
2893.00	14.390	72.270	2862.45	-44.54	78.97	277.42	40°00'08.653"N	104°55'30.773"W	1.27	
2985.00	12.800	70.000	2951.87	-48.96	85.94	297.89	40°00'08.722"N	104°55'30.510"W	1.82	
3075.00	12.630	78.200	3039.67	-52.02	91.36	316.89	40°00'08.776"N	104°55'30.266"W	2.01	
3165.00	14.780	73.190	3127.10	-54.80	96.70	337.51	40°00'08.829"N	104°55'30.001"W	2.73	
3255.00	12.940	72.020	3214.48	-58.67	103.13	358.09	40°00'08.892"N	104°55'29.737"W	2.07	
3344.00	13.840	71.600	3301.06	-62.67	109.56	377.67	40°00'08.956"N	104°55'29.485"W	1.02	
3434.00	14.360	72.060	3388.35	-66.91	116.40	398.50	40°00'09.023"N	104°55'29.217"W	0.59	
3524.00	15.530	70.340	3475.30	-71.67	123.89	420.47	40°00'09.097"N	104°55'28.935"W	1.39	
3614.00	14.090	69.730	3562.31	-76.82	131.74	442.09	40°00'09.175"N	104°55'28.657"W	1.61	
3704.00	14.570	72.290	3649.51	-81.44	138.98	463.15	40°00'09.246"N	104°55'28.386"W	0.88	

3793.00	12.180	72.590	3736.09	-85.21	145.20	482.78	40°00'09.308"N	104°55'28.134"W	2.69	
---------	--------	--------	---------	--------	--------	--------	----------------	-----------------	------	--

# Actual Wellpath Report

SACK 16N-6HZ AWP

Page 3 of 6

REFERENCE WELLPATH IDENTIFICATION			
Operator	KERR-MCGEE OIL & GAS ONSHORE LP	Slot	SLOT#04 SACK 16N-6HZ (673'FSL & 702'FEL, SEC.31)
Area	COLORADO	Well	SACK 16N-6HZ
Field	WELD COUNTY (KERR MCGEE)	Wellbore	SACK 16N-6HZ AWP
Facility	SEC.31-T1N-R67W		

WELLPATH DATA (128 stations)										
MD [ft]	Inclination [°]	Azimuth [°]	TVD [ft]	Vert Sect [ft]	North [ft]	East [ft]	Latitude	Longitude	DLS [°/100ft]	Comments
3883.00	10.150	69.690	3824.38	-88.75	150.79	499.27	40°00'09.363"N	104°55'27.922"W	2.34	
3973.00	10.480	69.880	3912.93	-92.43	156.36	514.40	40°00'09.418"N	104°55'27.728"W	0.37	
4063.00	10.150	73.480	4001.47	-95.60	161.43	529.69	40°00'09.468"N	104°55'27.531"W	0.80	
4153.00	8.090	72.980	4090.33	-98.01	165.54	543.34	40°00'09.509"N	104°55'27.356"W	2.29	
4243.00	8.970	74.750	4179.34	-100.12	169.24	556.17	40°00'09.545"N	104°55'27.191"W	1.02	
4333.00	7.560	72.780	4268.40	-102.17	172.83	568.59	40°00'09.581"N	104°55'27.031"W	1.60	
4422.00	7.410	83.060	4356.64	-103.21	175.26	579.88	40°00'09.605"N	104°55'26.886"W	1.51	
4512.00	6.170	82.180	4446.01	-103.27	176.62	590.44	40°00'09.618"N	104°55'26.751"W	1.38	
4602.00	7.730	77.070	4535.35	-103.96	178.63	601.13	40°00'09.638"N	104°55'26.613"W	1.86	
4692.00	6.710	74.060	4624.63	-105.40	181.43	612.08	40°00'09.666"N	104°55'26.473"W	1.21	
4782.00	5.680	70.130	4714.11	-107.21	184.39	621.33	40°00'09.695"N	104°55'26.354"W	1.24	
4872.00	4.180	63.370	4803.77	-109.30	187.37	628.45	40°00'09.725"N	104°55'26.262"W	1.78	
4961.00	2.630	70.070	4892.61	-110.85	189.52	633.27	40°00'09.746"N	104°55'26.200"W	1.80	
5051.00	1.630	25.700	4982.56	-112.39	191.38	635.77	40°00'09.764"N	104°55'26.168"W	2.06	
5141.00	0.730	290.140	5072.54	-113.73	192.73	635.78	40°00'09.778"N	104°55'26.168"W	2.05	
5501.00	1.160	187.660	5432.51	-111.25	189.91	633.14	40°00'09.750"N	104°55'26.202"W	0.42	
5860.00	0.990	188.660	5791.45	-104.75	183.24	632.19	40°00'09.684"N	104°55'26.214"W	0.05	
5950.00	1.100	328.860	5881.44	-104.79	183.21	631.63	40°00'09.683"N	104°55'26.221"W	2.18	
6039.00	1.190	329.070	5970.42	-106.41	184.74	630.71	40°00'09.699"N	104°55'26.233"W	0.10	
6219.00	0.610	297.550	6150.40	-108.66	186.78	628.90	40°00'09.719"N	104°55'26.257"W	0.41	
6488.00	0.590	232.340	6419.39	-108.77	186.60	626.54	40°00'09.717"N	104°55'26.287"W	0.24	
6848.00	1.050	118.550	6779.37	-105.91	183.89	627.97	40°00'09.690"N	104°55'26.269"W	0.39	
6982.00	1.040	130.700	6913.35	-104.29	182.51	629.97	40°00'09.677"N	104°55'26.243"W	0.17	
7027.00	2.640	136.490	6958.32	-103.16	181.49	630.99	40°00'09.666"N	104°55'26.230"W	3.57	
7072.00	7.260	167.510	7003.15	-99.49	177.96	632.32	40°00'09.632"N	104°55'26.213"W	11.51	
7117.00	10.870	175.350	7047.58	-92.42	170.96	633.28	40°00'09.562"N	104°55'26.200"W	8.46	
7162.00	14.960	176.790	7091.43	-82.38	160.92	633.95	40°00'09.463"N	104°55'26.192"W	9.12	
7206.00	19.650	177.540	7133.43	-69.33	147.85	634.58	40°00'09.334"N	104°55'26.184"W	10.67	
7251.00	21.420	176.430	7175.57	-53.58	132.09	635.42	40°00'09.178"N	104°55'26.173"W	4.03	
7295.00	24.860	173.270	7216.02	-36.31	114.88	637.00	40°00'09.008"N	104°55'26.152"W	8.31	
7340.00	30.190	175.250	7255.92	-15.53	94.20	639.05	40°00'08.804"N	104°55'26.126"W	12.02	
7385.00	33.330	176.930	7294.17	8.12	70.57	640.65	40°00'08.570"N	104°55'26.106"W	7.25	
7430.00	35.020	180.690	7331.41	33.25	45.31	641.16	40°00'08.321"N	104°55'26.099"W	6.01	
7475.00	37.160	183.170	7367.77	59.43	18.82	640.25	40°00'08.059"N	104°55'26.111"W	5.76	
7520.00	38.830	183.440	7403.23	86.68	-8.83	638.65	40°00'07.786"N	104°55'26.131"W	3.73	
7564.00	43.000	182.270	7436.48	115.07	-37.61	637.23	40°00'07.501"N	104°55'26.150"W	9.64	
7609.00	48.670	179.540	7467.82	147.03	-69.86	636.76	40°00'07.183"N	104°55'26.156"W	13.33	
7654.00	54.020	177.170	7495.92	182.00	-104.97	637.79	40°00'06.836"N	104°55'26.142"W	12.58	
7699.00	58.170	176.950	7521.02	219.24	-142.26	639.71	40°00'06.467"N	104°55'26.118"W	9.23	
7744.00	60.690	177.880	7543.90	257.87	-180.96	641.45	40°00'06.085"N	104°55'26.095"W	5.88	
7789.00	63.580	178.200	7564.93	297.49	-220.72	642.81	40°00'05.692"N	104°55'26.078"W	6.45	
7834.00	65.530	179.170	7584.26	337.93	-261.34	643.74	40°00'05.290"N	104°55'26.066"W	4.75	
7878.00	67.560	179.030	7601.78	378.06	-301.70	644.38	40°00'04.891"N	104°55'26.058"W	4.62	
7923.00	71.370	179.080	7617.56	419.96	-343.83	645.07	40°00'04.475"N	104°55'26.049"W	8.47	

7968.00	76.530	179.720	7630.00	462.92	-387.05	645.52	40°00'04.048"N	104°55'26.043"W	11.55
---------	--------	---------	---------	--------	---------	--------	----------------	-----------------	-------

# Actual Wellpath Report

SACK 16N-6HZ AWP

Page 4 of 6

REFERENCE WELLPATH IDENTIFICATION			
Operator	KERR-MCGEE OIL & GAS ONSHORE LP	Slot	SLOT#04 SACK 16N-6HZ (673'FSL & 702'FEL, SEC.31)
Area	COLORADO	Well	SACK 16N-6HZ
Field	WELD COUNTY (KERR MCGEE)	Wellbore	SACK 16N-6HZ AWP
Facility	SEC.31-T1N-R67W		

WELLPATH DATA (128 stations) † = interpolated/extrapolated station										
MD [ft]	Inclination [°]	Azimuth [°]	TVD [ft]	Vert Sect [ft]	North [ft]	East [ft]	Latitude	Longitude	DLS [°/100ft]	Comments
8013.00	80.090	180.070	7639.11	506.66	-431.11	645.60	40°00'03.613"N	104°55'26.042"W	7.95	
8065.00	83.760	180.440	7646.42	557.72	-482.59	645.37	40°00'03.104"N	104°55'26.045"W	7.09	
8102.00†	88.011	180.440	7649.07	594.30	-519.48	645.09	40°00'02.739"N	104°55'26.049"W	11.49	7" CASING POINT
8112.00	89.160	180.440	7649.32	604.22	-529.48	645.01	40°00'02.640"N	104°55'26.050"W	11.49	
8258.00	88.460	181.140	7652.35	748.83	-675.43	643.00	40°00'01.198"N	104°55'26.076"W	0.68	
8347.00	88.820	181.700	7654.46	836.85	-764.38	640.79	40°00'00.319"N	104°55'26.104"W	0.75	
8437.00	89.720	181.410	7655.61	925.84	-854.34	638.35	39°59'59.430"N	104°55'26.135"W	1.05	
8527.00	90.670	181.250	7655.30	1014.88	-944.31	636.26	39°59'58.541"N	104°55'26.162"W	1.07	
8617.00	90.240	180.730	7654.59	1104.00	-1034.30	634.71	39°59'57.652"N	104°55'26.182"W	0.75	
8707.00	90.000	180.690	7654.40	1193.19	-1124.29	633.59	39°59'56.762"N	104°55'26.197"W	0.27	
8797.00	89.070	179.810	7655.13	1282.46	-1214.28	633.20	39°59'55.873"N	104°55'26.202"W	1.42	
8887.00	88.580	179.760	7656.97	1371.81	-1304.26	633.54	39°59'54.984"N	104°55'26.197"W	0.55	
8976.00	89.590	179.720	7658.40	1460.18	-1393.25	633.94	39°59'54.104"N	104°55'26.192"W	1.14	
9066.00	90.860	179.800	7658.04	1549.55	-1483.25	634.32	39°59'53.215"N	104°55'26.187"W	1.41	
9246.00	89.780	179.360	7657.04	1728.36	-1663.24	635.64	39°59'51.436"N	104°55'26.171"W	0.65	
9425.00	89.960	179.280	7657.44	1906.27	-1842.22	637.76	39°59'49.667"N	104°55'26.143"W	0.11	
9606.00	90.680	179.420	7656.43	2086.15	-2023.21	639.81	39°59'47.879"N	104°55'26.117"W	0.41	
9785.00	90.120	178.450	7655.18	2264.18	-2202.17	643.14	39°59'46.110"N	104°55'26.074"W	0.63	
9964.00	90.490	179.980	7654.23	2442.12	-2381.14	645.59	39°59'44.342"N	104°55'26.043"W	0.88	
10144.00	89.880	179.350	7653.65	2620.90	-2561.14	646.65	39°59'42.563"N	104°55'26.029"W	0.49	
10324.00	90.680	180.720	7652.77	2799.53	-2741.13	646.54	39°59'40.784"N	104°55'26.031"W	0.88	
10503.00	90.210	180.440	7651.38	2976.96	-2920.12	644.72	39°59'39.015"N	104°55'26.054"W	0.31	
10683.00	90.180	179.950	7650.77	3155.54	-3100.11	644.11	39°59'37.237"N	104°55'26.062"W	0.27	
10864.00	91.690	180.030	7647.81	3335.16	-3281.08	644.14	39°59'35.448"N	104°55'26.062"W	0.84	
11042.00	91.790	180.180	7642.41	3511.71	-3459.00	643.82	39°59'33.690"N	104°55'26.066"W	0.10	
11222.00	90.120	180.900	7639.41	3690.12	-3638.96	642.12	39°59'31.912"N	104°55'26.088"W	1.01	
11401.00	88.610	180.310	7641.39	3867.52	-3817.93	640.23	39°59'30.143"N	104°55'26.112"W	0.91	
11491.00	89.470	180.180	7642.90	3956.79	-3907.92	639.85	39°59'29.254"N	104°55'26.117"W	0.97	
11581.00	89.560	179.960	7643.66	4046.10	-3997.92	639.74	39°59'28.364"N	104°55'26.119"W	0.26	
11671.00	90.770	179.740	7643.40	4135.45	-4087.91	639.97	39°59'27.475"N	104°55'26.116"W	1.37	
11851.00	90.830	179.610	7640.89	4314.21	-4267.89	640.99	39°59'25.696"N	104°55'26.103"W	0.08	
12031.00	90.650	179.550	7638.56	4493.01	-4447.87	642.31	39°59'23.918"N	104°55'26.086"W	0.11	
12210.00	89.750	179.300	7637.94	4670.88	-4626.86	644.11	39°59'22.149"N	104°55'26.063"W	0.52	
12390.00	89.320	179.540	7639.40	4849.74	-4806.84	645.93	39°59'20.370"N	104°55'26.039"W	0.27	
12569.00	88.490	179.080	7642.82	5027.62	-4985.80	648.09	39°59'18.602"N	104°55'26.012"W	0.53	
12659.00	89.600	179.820	7644.32	5117.03	-5075.78	648.95	39°59'17.712"N	104°55'26.001"W	1.48	
12815.00	89.600	179.720	7645.41	5271.94	-5231.77	649.58	39°59'16.171"N	104°55'25.993"W	0.06	LAST BHI MWD+IFR SURVEY
12870.00	89.600	179.720	7645.79	5326.56	-5286.77	649.84	39°59'15.627"N	104°55'25.989"W	0.00	PROJECTION TO BIT

REFERENCE WELLPATH IDENTIFICATION			
Operator	KERR-MCGEE OIL & GAS ONSHORE LP	Slot	SLOT#04 SACK 16N-6HZ (673'FSL & 702'FEL, SEC.31)
Area	COLORADO	Well	SACK 16N-6HZ
Field	WELD COUNTY (KERR MCGEE)	Wellbore	SACK 16N-6HZ AWB
Facility	SEC.31-T1N-R67W		

HOLE & CASING SECTIONS - Ref Wellbore: SACK 16N-6HZ AWB Ref Wellpath: SACK 16N-6HZ AWP									
String/Diameter	Start MD [ft]	End MD [ft]	Interval [ft]	Start TVD [ft]	End TVD [ft]	Start N/S [ft]	Start E/W [ft]	End N/S [ft]	End E/W [ft]
13.5in Open Hole	25.00	1315.00	1290.00	25.00	1314.98	0.00	0.00	-6.62	-3.17
9.625in Casing Surface	25.00	1315.00	1290.00	25.00	1314.98	0.00	0.00	-6.62	-3.17
8.75in Open Hole	1315.00	8113.00	6798.00	1314.98	7649.33	-6.62	-3.17	-530.48	645.00
7in Casing Intermediate	25.00	8102.00	8077.00	25.00	7649.07	0.00	0.00	-519.48	645.09
6.125in Open Hole	8113.00	12870.00	4757.00	7649.33	7645.79	-530.48	645.00	-5286.77	649.84

WELLPATH COMPOSITION - Ref Wellbore: SACK 16N-6HZ AWB Ref Wellpath: SACK 16N-6HZ AWP				
Start MD [ft]	End MD [ft]	Positional Uncertainty Model	Log Name/Comment	Wellbore
25.00	1258.00	Generic gyro - continuous (Standard)	MS GYRO SURVEYS <125-1258>	SACK 16N-6HZ AWB
1258.00	8065.00	NaviTrak (MAGCORR,IFR)	BHI NAVITRAK MWD+IFR 8 3/4" <1325-8065>	SACK 16N-6HZ AWB
8065.00	12815.00	NaviTrak (MAGCORR,IFR)	BHI NAVITRAK MWD+IFR 6 1/8" <8112-12815>	SACK 16N-6HZ AWB
12815.00	12870.00	Blind Drilling (std)	Projection to bit	SACK 16N-6HZ AWB



# Actual Wellpath Report

SACK 16N-6HZ AWP

Page 6 of 6

REFERENCE WELLPATH IDENTIFICATION			
Operator	KERR-MCGEE OIL & GAS ONSHORE LP	Slot	SLOT#04 SACK 16N-6HZ (673'FSL & 702'FEL, SEC.31)
Area	COLORADO	Well	SACK 16N-6HZ
Field	WELD COUNTY (KERR MCGEE)	Wellbore	SACK 16N-6HZ AWB
Facility	SEC.31-T1N-R67W		

WELLPATH COMMENTS				
MD [ft]	Inclination [°]	Azimuth [°]	TVD [ft]	Comment
25.00	0.000	198.940	25.00	TIE ON
125.00	0.370	198.940	125.00	BEGIN GYRO SURVEYS
1258.00	0.410	197.350	1257.98	TIE ONTO GYRO SURVEYS
1325.00	0.220	193.410	1324.98	BEGIN BHI MWD+IFR SURVEYS
8102.00	88.011	180.440	7649.07	7" CASING POINT
12815.00	89.600	179.720	7645.41	LAST BHI MWD+IFR SURVEY
12870.00	89.600	179.720	7645.79	PROJECTION TO BIT