

# GORDON TURKEY FARMS POOLING UNIT #1

Existing Features	
KB	9
Surface csg shoe at	242

TOC (EST)	508
Stage Tool (200 sx)	842
Bottom of Foxhills (FHM)	1108

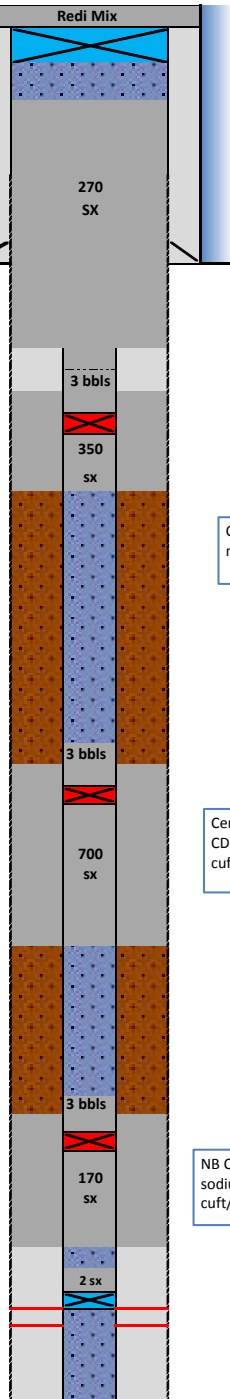
Sussex	Top	4561
Productive in 1-mile		
Sussex	Base	4641

Shannon	Bottom	5024
Productive in 1-mile		

Niobrara Geologic Top	7266
TOC (Est)	7350

Geologic Top	
J SAND	Perf Top
	Perf Bottom
	7973
	8014

PBMD	8066
4-1/2" 10.5# CSG	8164



Proposed Additions for P&A	
80	CIBP (8-5/8")
100	TOC

500	Casing Stub
700	Bottom of cement
700	TOC in 4-1/2"
860	Top SQZ Holes
900	CICR

1300	Bottom SQZ Holes
------	------------------

Cement Blend: Type III w/ cello flake and CaCl<sub>2</sub>, mixed at 14.8 ppg and 1.33 cuft/sk. with 40%

4200	TOC in 4-1/2"
4360	Top SQZ Holes
4400	CICR

Cement Blend: "G" w/ 0.25 pps cello flake, 0.4% CD-32, 0.4% ASA - 301, mixed at 15.8 ppg and 1.15 cuft/sk with 12" hole and 40% excess

5125	Bottom SQZ Holes
------	------------------

6700	TOC in 4-1/2"
6850	Top SQZ Holes
6890	CICR

NB Cement Blend: 50/50 Poz "G" w/ 20% silica flour, 3% gel, 0.1% sodium metasilicate and 0.4% FL-52. Mixed at 13.5 ppg and 1.71 cuft/ sk yield with 40% excess and 9" hole size.

7330	Bottom SQZ Holes
------	------------------

7900	4-1/2" CIBP
------	-------------

API# 0512307219				
Well: GORDON TURKEY FARMS POOLING UNIT #1				
Equipment	Specs.	Depth	Capacity (bbl/ft)	Capacity ft <sup>3</sup> /ft
Surface Casing	8 5/8" 24#	242	0.0637	0.3576
Production Casing	4.50 (10.5#)	8164	0.0159	0.0895
Tubing Size				
Bit Size	7 7/8		0.0602	0.3382
Hole Size	8.5		0.0702	0.3941
Hole Size	9		0.0787	0.4418
Hole Size	12		0.1399	0.7854

Cement Calculations				
Section	Volume cu-ft	Cement Sacks	Excess	Top Plug
S/C	50.78	38.18		
Stub Plug OH	283.69	213.30	40%	
Stub Plug 4-1/2"	17.9	13.46		12" hole
Stub Plug Total	352.37	265	270	
top CICR	17.90	13.46		
out CICR	35.80	26.92		Caliper to 4500'
Annulus	415.77	312.61	40%	
FH Suicide	469.47	352.99	350	
	465.5	cu-ft		

top CICR	17.90	15.57		SX/ SH Plug
out CICR	64.89	56.42		
Annulus	722.87	628.59	40%	12"
Total	805.66	700.57	700	Caliper 4500-470
	805	cu-ft		

Cement Yield	1.33	1.15	1.71	1.38
	Top Plug	SX/SH	NB/Cd Squeeze	NB/Cd in pipe

top CICR	17.01	9.94		NB/CD Plug
out CICR	39.38	23.03		
Annulus	222.66	130.21	40%	9" - Caliper
Total	279.05	163.18	170	7280-7400
	290.70			

Legend	
	Existing cement with CBL
	assumed cement w/ no CBL
	cast iron cement retainer
	cast iron bridge plug
	mud
	2% KCL Water