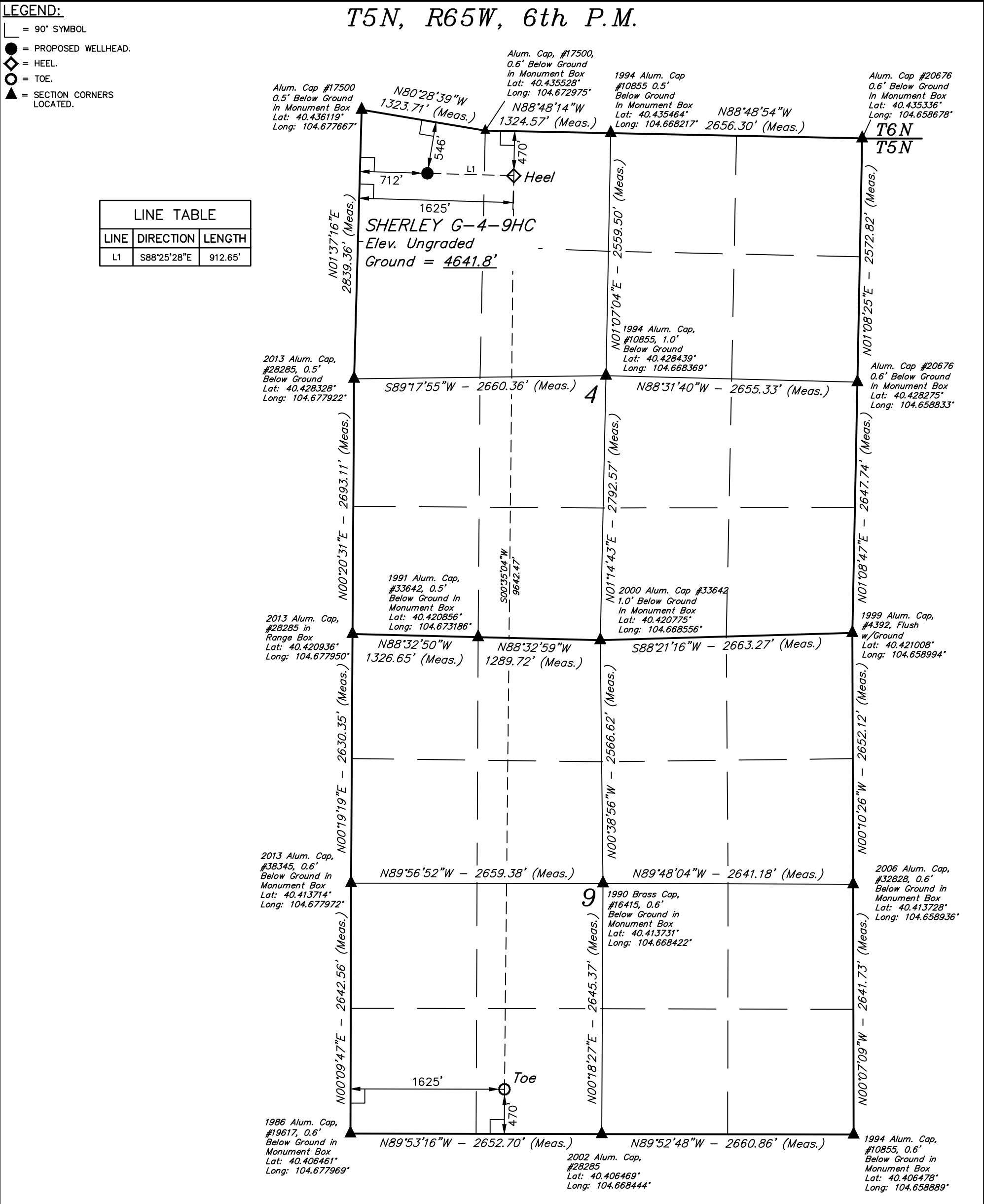


- LEGEND:
- = 90° SYMBOL
  - = PROPOSED WELLHEAD.
  - = HEEL.
  - = TOE.
  - = SECTION CORNERS LOCATED.

LINE TABLE		
LINE	DIRECTION	LENGTH
L1	S88°25'28"E	912.65'



PDOP = 1.4

NAD 83 (TOE)	NAD 83 (HEEL)	NAD 83 (SURFACE LOCATION)
LATITUDE = 40°24'27.93" (40.407758)	LATITUDE = 40°26'03.21" (40.434225)	LATITUDE = 40°26'03.43" (40.434286)
LONGITUDE = 104°40'19.68" (104.672133)	LONGITUDE = 104°40'18.81" (104.671892)	LONGITUDE = 104°40'30.60" (104.675167)
NAD 27 (TOE)	NAD 27 (HEEL)	NAD 27 (SURFACE LOCATION)
LATITUDE = 40°24'27.99" (40.407775)	LATITUDE = 40°26'03.28" (40.434244)	LATITUDE = 40°26'03.49" (40.434303)
LONGITUDE = 104°40'17.81" (104.671614)	LONGITUDE = 104°40'16.94" (104.671372)	LONGITUDE = 104°40'28.73" (104.674647)

CERTIFICATE  
THIS IS TO CERTIFY THAT THE ABOVE PLAT WAS PREPARED FROM FIELD NOTES OF ACTUAL SURVEYS MADE BY ME OR UNDER MY SUPERVISION, AND THAT THE SAME ARE TRUE AND CORRECT TO THE BEST OF MY KNOWLEDGE AND BELIEF.

REGISTERED LAND SURVEYOR  
REGISTRATION NO. 28285  
STATE OF COLORADO

**BASIS OF BEARINGS**  
BASIS OF BEARINGS IS A G.P.S. OBSERVATION  
**BASIS OF ELEVATION**

USGS COOPERATIVE BASE NETWORK CONTROL STATION,  
DESIGNATION 'M414'. NGS DATA SHEET LISTS THE NAVD 88  
ELEVATION AS BEING 4600.58 FEET

**BAYSWATER EXPLORATION  
& PRODUCTION, LLC**

**SHERLEY G-4-9HC  
NW 1/4 NW 1/4, SECTION 4, T5N, R65W, 6th P.M.  
WELD COUNTY, COLORADO**

SURVEYED BY: DALLAS NIELSEN, C.J.	DATE: 08-08-14
DRAWN BY: J.W.	DATE DRAWN: 08-11-14
SCALE: 1" = 1000'	REVISED: 09-29-14

**WELL LOCATION PLAT**



**UELS, LLC**  
Corporate Office \* 85 South 200 East  
Vernal, UT 84078 \* (435) 789-1017

