

Coleman Oil & Gas

**La Plata County CO
SEC 33-T34N-R7W
La Plata 34-7-33 #1**

Lateral 2

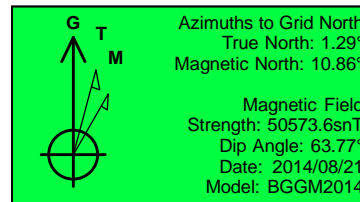
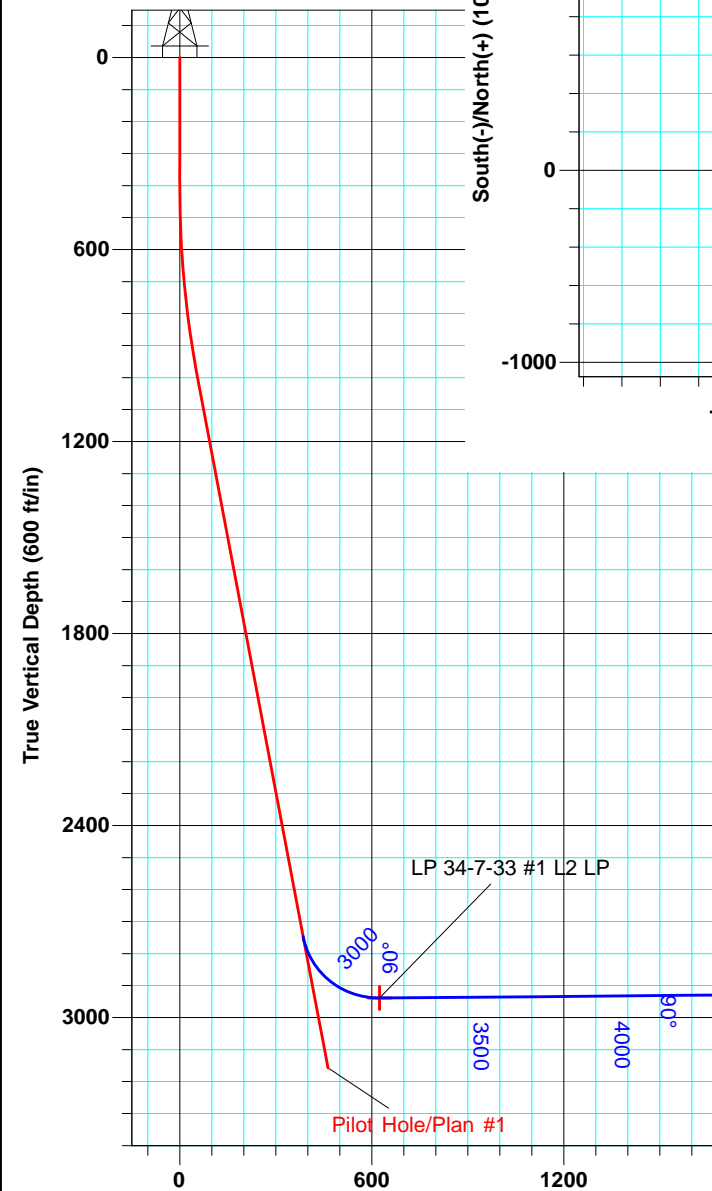
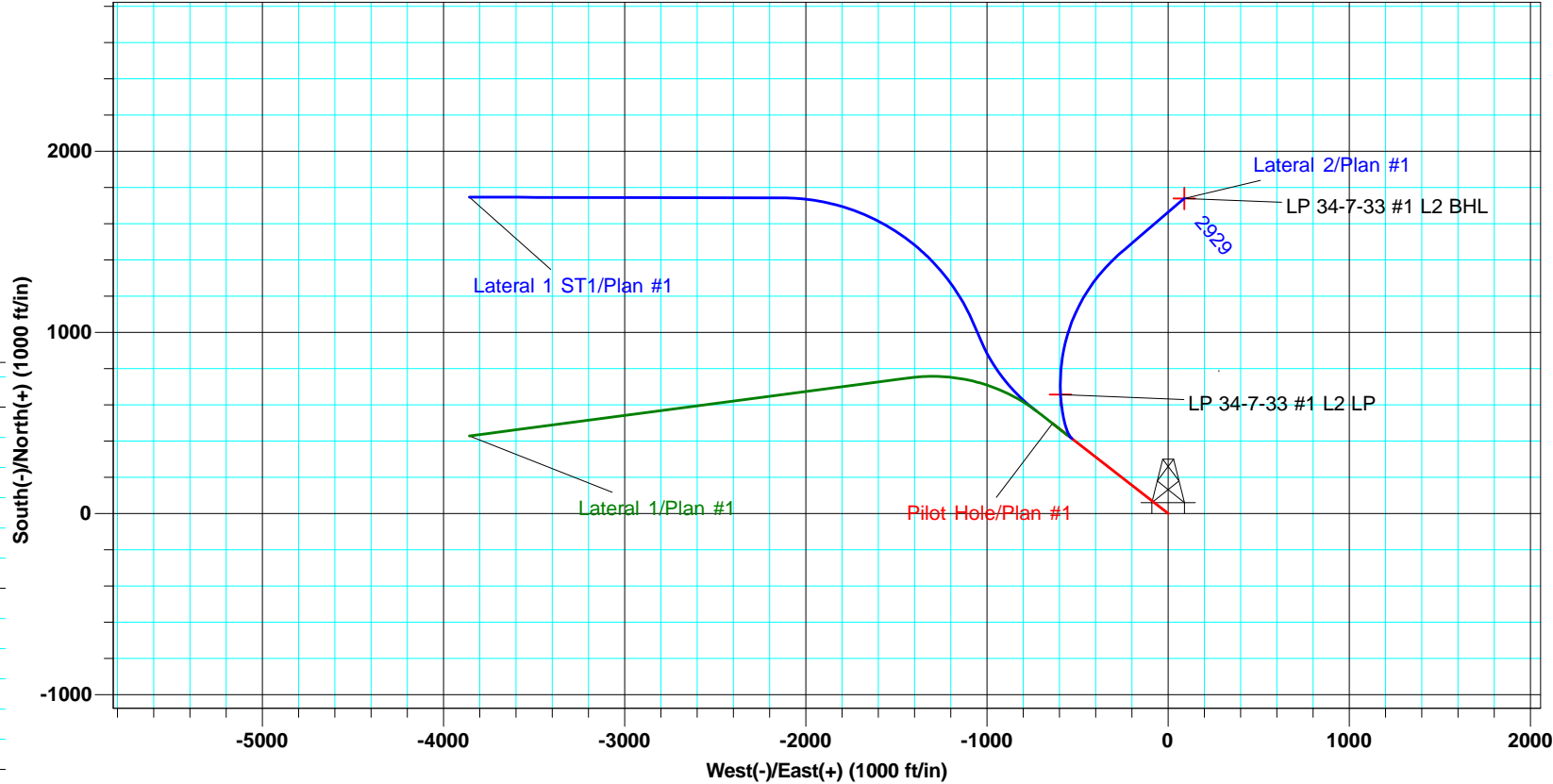
Plan: Plan #1

Standard Planning Report

21 August, 2014



Project: La Plata County CO
 Site: SEC 33-T34N-R7W
 Well: La Plata 34-7-33 #1
 Wellbore: Lateral 2
 Design: Plan #1



ALL AZIMUTHS MUST BE CORRECTED TO GRID NORTH
 To convert a Magnetic Direction to a Grid Direction, Add 10.86°
 To convert a True Direction to a Grid Direction, Add 1.29°

WELL DETAILS La Plata 34-7-33 #1						
Ground Level: 6724.0						
+N/-S	+E/-W	Northing	Easting	Latitude	Longitude	
0.0	0.0	1180004.23	2385784.44	37° 8' 31.164 N	107° 36' 26.316 W	

SITE DETAILS: SEC 33-T34N-R7W			
Site Centre Northing:	1180004.23		
Easting:	2385784.44		
Positional Uncertainty:	1.0		
Convergence:	-1.29		
Local North:	Grid		

PROJECT DETAILS: La Plata County CO			
Geodetic System:	US State Plane 1983		
Datum:	North American Datum 1983		
Ellipsoid:	GRS 1980		
Zone:	Colorado Southern Zone		
System Datum:	Mean Sea Level		

Vertical Section at 2.93° (600 ft/in)

Database:	EDM 5000.1 Old	Local Co-ordinate Reference:	Well La Plata 34-7-33 #1
Company:	Coleman Oil & Gas	TVD Reference:	DFE @ 6737.5ft (GL + 13.5')
Project:	La Plata County CO	MD Reference:	DFE @ 6737.5ft (GL + 13.5')
Site:	SEC 33-T34N-R7W	North Reference:	Grid
Well:	La Plata 34-7-33 #1	Survey Calculation Method:	Minimum Curvature
Wellbore:	Lateral 2		
Design:	Plan #1		

Project	La Plata County CO		
Map System:	US State Plane 1983	System Datum:	Mean Sea Level
Geo Datum:	North American Datum 1983		Using Well Reference Point
Map Zone:	Colorado Southern Zone		Using geodetic scale factor

Site	SEC 33-T34N-R7W		
Site Position:		Northing:	1,180,004.23 usft
From:	Lat/Long	Easting:	2,385,784.44 usft
Position Uncertainty:	1.0 ft	Slot Radius:	6-1/8 "
		Latitude:	37° 8' 31.164 N
		Longitude:	107° 36' 26.316 W
		Grid Convergence:	-1.29 °

Well	La Plata 34-7-33 #1, FC Horizontals		
Well Position	+N/-S	0.0 ft	Northing: 1,180,004.23 usft
	+E/-W	0.0 ft	Easting: 2,385,784.44 usft
Position Uncertainty		1.0 ft	Wellhead Elevation:
			Ground Level: 6,724.0 ft

Wellbore	Lateral 2				
Magnetics	Model Name	Sample Date	Declination (°)	Dip Angle (°)	Field Strength (nT)
	BGGM2014	2014/08/21	9.57	63.77	50,574

Design	Plan #1			
Audit Notes:				
Version:	Phase:	PLAN	Tie On Depth:	2,850.0
Vertical Section:	Depth From (TVD) (ft)	+N/-S (ft)	+E/-W (ft)	Direction (°)
	0.0	0.0	0.0	2.93

Plan Sections										
Measured Depth (ft)	Inclination (°)	Azimuth (°)	Vertical Depth (ft)	+N/-S (ft)	+E/-W (ft)	Dogleg Rate (°/100usft)	Build Rate (°/100usft)	Turn Rate (°/100usft)	TFO (°)	Target
2,850.0	18.25	307.89	2,747.1	413.2	-531.0	0.00	0.00	0.00	0.00	
3,191.1	90.40	356.53	2,938.8	655.3	-593.6	23.00	21.15	14.26	50.00	LP 34-7-33 #1 L2 L
4,072.5	90.40	49.41	2,932.2	1,438.3	-261.7	6.00	0.00	6.00	89.81	
4,534.3	90.40	49.41	2,929.0	1,738.8	89.0	0.00	0.00	0.00	0.00	LP 34-7-33 #1 L2 B

Database:	EDM 5000.1 Old	Local Co-ordinate Reference:	Well La Plata 34-7-33 #1
Company:	Coleman Oil & Gas	TVD Reference:	DFE @ 6737.5ft (GL + 13.5')
Project:	La Plata County CO	MD Reference:	DFE @ 6737.5ft (GL + 13.5')
Site:	SEC 33-T34N-R7W	North Reference:	Grid
Well:	La Plata 34-7-33 #1	Survey Calculation Method:	Minimum Curvature
Wellbore:	Lateral 2		
Design:	Plan #1		

Planned Survey									
Measured Depth (ft)	Inclination (°)	Azimuth (°)	Vertical Depth (ft)	+N/-S (ft)	+E/-W (ft)	Vertical Section (ft)	Dogleg Rate (°/100usft)	Build Rate (°/100usft)	Turn Rate (°/100usft)
0.0	0.00	0.00	0.0	0.0	0.0	0.0	0.00	0.00	0.00
100.0	0.00	0.00	100.0	0.0	0.0	0.0	0.00	0.00	0.00
200.0	0.00	0.00	200.0	0.0	0.0	0.0	0.00	0.00	0.00
300.0	0.00	0.00	300.0	0.0	0.0	0.0	0.00	0.00	0.00
400.0	0.00	0.00	400.0	0.0	0.0	0.0	0.00	0.00	0.00
500.0	3.00	307.89	500.0	1.6	-2.1	1.5	3.00	3.00	0.00
600.0	6.00	307.89	599.6	6.4	-8.3	6.0	3.00	3.00	0.00
700.0	9.00	307.89	698.8	14.4	-18.6	13.5	3.00	3.00	0.00
800.0	12.00	307.89	797.1	25.6	-32.9	23.9	3.00	3.00	0.00
900.0	15.00	307.89	894.3	40.0	-51.4	37.3	3.00	3.00	0.00
1,008.4	18.25	307.89	998.2	59.0	-75.8	55.1	3.00	3.00	0.00
1,100.0	18.25	307.89	1,085.2	76.6	-98.5	71.5	0.00	0.00	0.00
1,200.0	18.25	307.89	1,180.1	95.9	-123.2	89.4	0.00	0.00	0.00
1,300.0	18.25	307.89	1,275.1	115.1	-147.9	107.4	0.00	0.00	0.00
1,400.0	18.25	307.89	1,370.1	134.3	-172.6	125.3	0.00	0.00	0.00
1,500.0	18.25	307.89	1,465.0	153.6	-197.3	143.3	0.00	0.00	0.00
1,600.0	18.25	307.89	1,560.0	172.8	-222.1	161.2	0.00	0.00	0.00
1,700.0	18.25	307.89	1,655.0	192.0	-246.8	179.2	0.00	0.00	0.00
1,800.0	18.25	307.89	1,749.9	211.3	-271.5	197.1	0.00	0.00	0.00
1,900.0	18.25	307.89	1,844.9	230.5	-296.2	215.1	0.00	0.00	0.00
2,000.0	18.25	307.89	1,939.9	249.7	-320.9	233.0	0.00	0.00	0.00
2,100.0	18.25	307.89	2,034.8	269.0	-345.6	251.0	0.00	0.00	0.00
2,200.0	18.25	307.89	2,129.8	288.2	-370.4	268.9	0.00	0.00	0.00
2,300.0	18.25	307.89	2,224.8	307.4	-395.1	286.8	0.00	0.00	0.00
2,400.0	18.25	307.89	2,319.8	326.7	-419.8	304.8	0.00	0.00	0.00
2,500.0	18.25	307.89	2,414.7	345.9	-444.5	322.7	0.00	0.00	0.00
2,600.0	18.25	307.89	2,509.7	365.2	-469.2	340.7	0.00	0.00	0.00
2,700.0	18.25	307.89	2,604.7	384.4	-494.0	358.6	0.00	0.00	0.00
2,800.0	18.25	307.89	2,699.6	403.6	-518.7	376.6	0.00	0.00	0.00
2,850.0	18.25	307.89	2,747.1	413.2	-531.0	385.6	0.00	0.00	0.00
2,860.0	19.81	313.09	2,756.6	415.4	-533.5	387.5	23.00	15.54	52.06
2,880.0	23.27	321.36	2,775.2	420.8	-538.4	392.7	23.00	17.34	41.31
2,900.0	27.07	327.50	2,793.3	427.7	-543.4	399.4	23.00	18.96	30.72
2,920.0	31.06	332.20	2,810.7	436.1	-548.2	407.5	23.00	19.98	23.51
2,940.0	35.19	335.91	2,827.5	445.9	-553.0	417.1	23.00	20.65	18.55
2,960.0	39.42	338.93	2,843.4	457.1	-557.6	428.0	23.00	21.11	15.07
2,980.0	43.70	341.44	2,858.4	469.6	-562.1	440.3	23.00	21.44	12.57
3,000.0	48.04	343.59	2,872.3	483.3	-566.4	453.7	23.00	21.67	10.73
3,020.0	52.41	345.46	2,885.1	498.1	-570.5	468.3	23.00	21.85	9.36
3,040.0	56.80	347.12	2,896.7	513.9	-574.3	483.9	23.00	21.98	8.31
3,060.0	61.22	348.62	2,907.0	530.7	-577.9	500.5	23.00	22.08	7.52
3,080.0	65.65	350.01	2,915.9	548.3	-581.3	517.8	23.00	22.16	6.90
3,100.0	70.09	351.29	2,923.4	566.5	-584.3	535.9	23.00	22.21	6.44
3,120.0	74.55	352.51	2,929.5	585.4	-586.9	554.6	23.00	22.26	6.08
3,140.0	79.00	353.67	2,934.1	604.7	-589.3	573.8	23.00	22.29	5.83
3,160.0	83.47	354.81	2,937.1	624.4	-591.3	593.3	23.00	22.31	5.65
3,180.0	87.93	355.92	2,938.6	644.3	-592.9	613.1	23.00	22.32	5.55
3,191.1	90.40	356.53	2,938.8	655.3	-593.6	624.1	23.00	22.33	5.52
LP 34-7-33 #1 L2 LP									
3,200.0	90.40	357.06	2,938.7	664.2	-594.1	633.0	6.00	0.02	6.00
3,250.0	90.41	0.06	2,938.4	714.2	-595.4	682.8	6.00	0.02	6.00
3,300.0	90.42	3.06	2,938.0	764.2	-594.0	732.8	6.00	0.02	6.00
3,350.0	90.43	6.06	2,937.6	814.0	-590.0	782.8	6.00	0.01	6.00
3,400.0	90.43	9.06	2,937.3	863.6	-583.4	832.6	6.00	0.01	6.00

Database:	EDM 5000.1 Old	Local Co-ordinate Reference:	Well La Plata 34-7-33 #1
Company:	Coleman Oil & Gas	TVD Reference:	DFE @ 6737.5ft (GL + 13.5')
Project:	La Plata County CO	MD Reference:	DFE @ 6737.5ft (GL + 13.5')
Site:	SEC 33-T34N-R7W	North Reference:	Grid
Well:	La Plata 34-7-33 #1	Survey Calculation Method:	Minimum Curvature
Wellbore:	Lateral 2		
Design:	Plan #1		

Planned Survey										
Measured Depth (ft)	Inclination (°)	Azimuth (°)	Vertical Depth (ft)	+N/-S (ft)	+E/-W (ft)	Vertical Section (ft)	Dogleg Rate (°/100usft)	Build Rate (°/100usft)	Turn Rate (°/100usft)	
3,450.0	90.44	12.06	2,936.9	912.7	-574.3	882.2	6.00	0.01	6.00	
3,500.0	90.44	15.06	2,936.5	961.3	-562.6	931.3	6.00	0.01	6.00	
3,550.0	90.44	18.06	2,936.1	1,009.2	-548.3	979.9	6.00	0.00	6.00	
3,600.0	90.44	21.06	2,935.7	1,056.3	-531.6	1,027.8	6.00	0.00	6.00	
3,650.0	90.44	24.06	2,935.3	1,102.5	-512.4	1,074.9	6.00	0.00	6.00	
3,700.0	90.44	27.06	2,935.0	1,147.6	-490.8	1,121.0	6.00	0.00	6.00	
3,750.0	90.44	30.06	2,934.6	1,191.5	-466.9	1,166.1	6.00	-0.01	6.00	
3,800.0	90.44	33.06	2,934.2	1,234.1	-440.7	1,210.0	6.00	-0.01	6.00	
3,850.0	90.43	36.06	2,933.8	1,275.3	-412.4	1,252.5	6.00	-0.01	6.00	
3,900.0	90.43	39.06	2,933.4	1,314.9	-381.9	1,293.7	6.00	-0.01	6.00	
3,950.0	90.42	42.06	2,933.1	1,352.9	-349.4	1,333.3	6.00	-0.01	6.00	
4,000.0	90.41	45.06	2,932.7	1,389.1	-314.9	1,371.2	6.00	-0.02	6.00	
4,050.0	90.40	48.06	2,932.3	1,423.5	-278.6	1,407.4	6.00	-0.02	6.00	
4,072.5	90.40	49.41	2,932.2	1,438.3	-261.7	1,423.0	6.00	-0.02	6.00	
4,100.0	90.40	49.41	2,932.0	1,456.2	-240.8	1,442.0	0.00	0.00	0.00	
4,200.0	90.40	49.41	2,931.3	1,521.3	-164.9	1,510.9	0.00	0.00	0.00	
4,300.0	90.40	49.41	2,930.6	1,586.3	-89.0	1,579.7	0.00	0.00	0.00	
4,400.0	90.40	49.41	2,929.9	1,651.4	-13.0	1,648.6	0.00	0.00	0.00	
4,500.0	90.40	49.41	2,929.2	1,716.5	62.9	1,717.4	0.00	0.00	0.00	
4,534.3	90.40	49.41	2,929.0	1,738.8	89.0	1,741.1	0.00	0.00	0.00	
LP 34-7-33 #1 L2 BHL										

Design Targets										
Target Name	Dip Angle (°)	Dip Dir. (°)	TVD (ft)	+N/-S (ft)	+E/-W (ft)	Northing (usft)	Easting (usft)	Latitude	Longitude	
LP 34-7-33 #1 L2 BHL - hit/miss target - plan hits target center - Shape - Point	0.00	360.00	2,929.0	1,738.8	89.0	1,181,743.06	2,385,873.44	37° 8' 48.371 N	107° 36' 25.701 W	
LP 34-7-33 #1 L2 LP - plan hits target center - Point	0.00	360.00	2,938.8	655.3	-593.6	1,180,659.54	2,385,190.82	37° 8' 37.509 N	107° 36' 33.828 W	