

Coleman Oil & Gas

**La Plata County CO
SEC 33-T34N-R7W
La Plata 34-7-33 #1**

Lateral 1 ST1

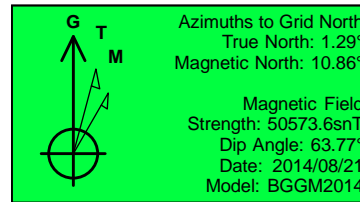
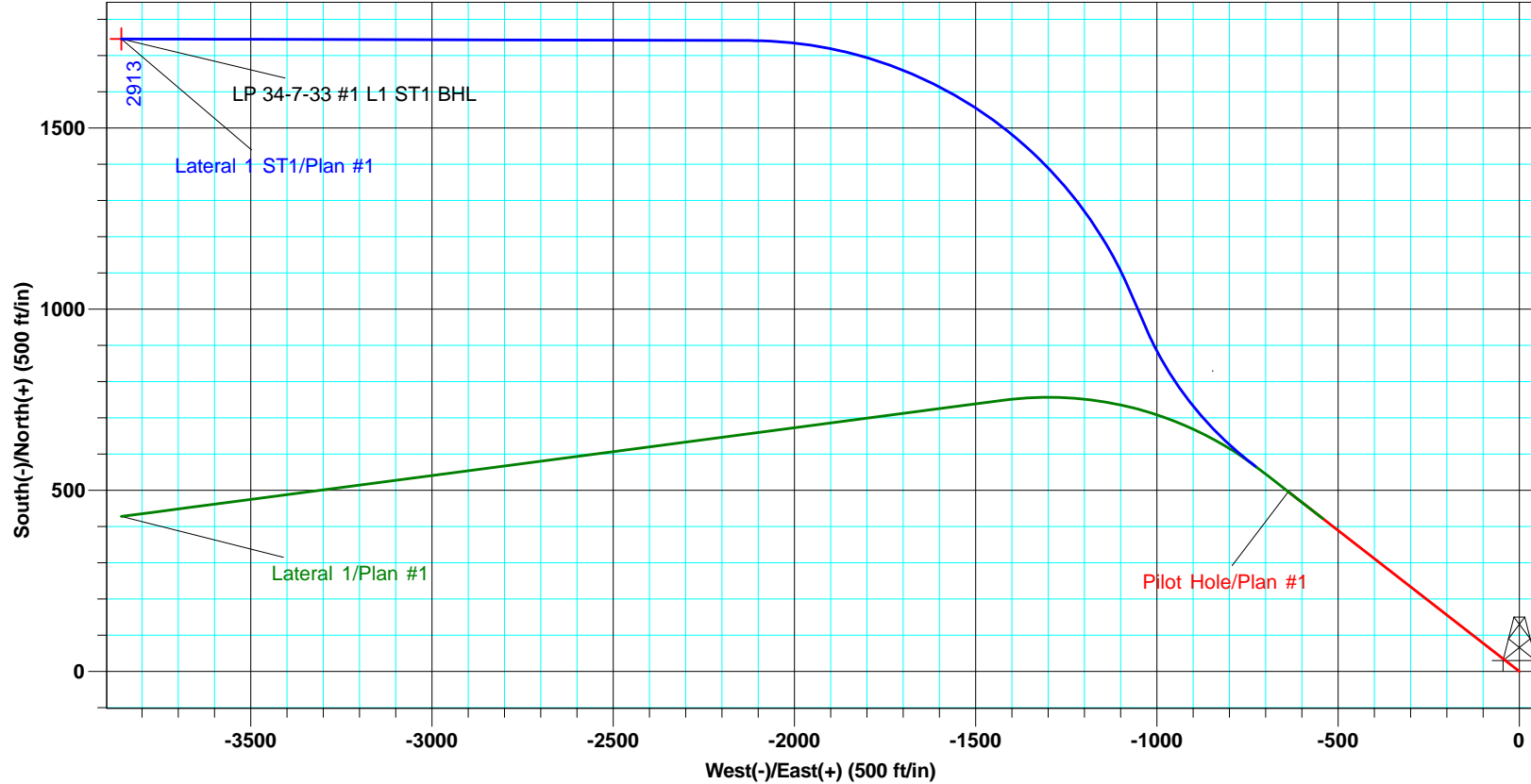
Plan: Plan #1

Standard Planning Report

21 August, 2014



Project: La Plata County CO
 Site: SEC 33-T34N-R7W
 Well: La Plata 34-7-33 #1
 Wellbore: Lateral 1 ST1
 Design: Plan #1

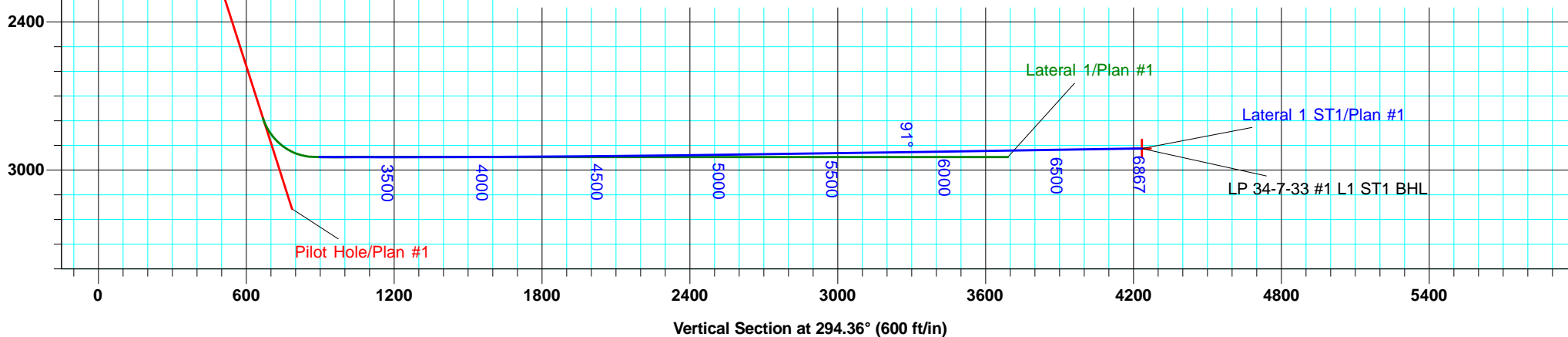


ALL AZIMUTHS MUST BE CORRECTED TO GRID NORTH
 To convert a Magnetic Direction to a Grid Direction, Add 10.86°
 To convert a True Direction to a Grid Direction, Add 1.29°

WELL DETAILS						
La Plata 34-7-33 #1						
Ground Level: 6724.0						
+N/-S	+E/-W	Northing	Easting	Latitude	Longitude	
0.0	0.0	1180004.23	2385784.44	37° 8' 31.164 N	107° 36' 26.316 W	

SITE DETAILS: SEC 33-T34N-R7W			
Site Centre Northing:	1180004.23		
Easting:	2385784.44		
Positional Uncertainty:	1.0		
Convergence:	-1.29		
Local North:	Grid		

PROJECT DETAILS: La Plata County CO			
Geodetic System:	US State Plane 1983		
Datum:	North American Datum 1983		
Ellipsoid:	GRS 1980		
Zone:	Colorado Southern Zone		
System Datum:	Mean Sea Level		



Database:	EDM 5000.1 Old	Local Co-ordinate Reference:	Well La Plata 34-7-33 #1
Company:	Coleman Oil & Gas	TVD Reference:	DFE @ 6737.5ft (GL + 13.5')
Project:	La Plata County CO	MD Reference:	DFE @ 6737.5ft (GL + 13.5')
Site:	SEC 33-T34N-R7W	North Reference:	Grid
Well:	La Plata 34-7-33 #1	Survey Calculation Method:	Minimum Curvature
Wellbore:	Lateral 1 ST1		
Design:	Plan #1		

Project	La Plata County CO		
Map System:	US State Plane 1983	System Datum:	Mean Sea Level
Geo Datum:	North American Datum 1983		Using Well Reference Point
Map Zone:	Colorado Southern Zone		Using geodetic scale factor

Site		SEC 33-T34N-R7W			
Site Position: From: Position Uncertainty:	Lat/Long	Northing:	1,180,004.23 usft	Latitude:	37° 8' 31.164 N
		Easting:	2,385,784.44 usft	Longitude:	107° 36' 26.316 W
	1.0 ft	Slot Radius:	6-1/8 "	Grid Convergence:	-1.29

Well	La Plata 34-7-33 #1, FC Horizontals					
Well Position	+N/-S	0.0 ft	Northing:	1,180,004.23 usft	Latitude:	37° 8' 31.164 N
	+E/-W	0.0 ft	Easting:	2,385,784.44 usft	Longitude:	107° 36' 26.316 W
Position Uncertainty		1.0 ft	Wellhead Elevation:		Ground Level:	6,724.0 f

Wellbore	Lateral 1 ST1				
Magnetics	Model Name	Sample Date	Declination (°)	Dip Angle (°)	Field Strength (nT)
	BGGM2014	2014/08/21	9.57	63.77	50,574

Design	Plan #1				
Audit Notes:					
Version:	Phase:	PLAN	Tie On Depth:	3,200.0	
Vertical Section:	Depth From (TVD) (ft)	+N/-S (ft)	+E/-W (ft)	Direction (°)	
	0.0	0.0	0.0	294.36	

Plan Sections										
Measured Depth (ft)	Inclination (°)	Azimuth (°)	Vertical Depth (ft)	+N/-S (ft)	+E/-W (ft)	Dogleg Rate (°/100usft)	Build Rate (°/100usft)	Turn Rate (°/100usft)	TFO (°)	Target
3,200.0	90.00	306.81	2,947.2	566.5	-728.2	0.00	0.00	0.00	0.00	
3,700.0	90.00	336.81	2,947.2	955.0	-1,033.9	6.00	0.00	6.00	90.00	
3,800.0	90.00	336.81	2,947.2	1,046.9	-1,073.2	0.00	0.00	0.00	0.00	
5,133.3	90.79	270.15	2,936.8	1,741.6	-2,123.6	5.00	0.06	-5.00	-89.14	
6,866.9	90.79	270.15	2,912.9	1,746.0	-3,857.0	0.00	0.00	0.00	0.00	LP 34-7-33 #1 L1 S

Database:	EDM 5000.1 Old	Local Co-ordinate Reference:	Well La Plata 34-7-33 #1
Company:	Coleman Oil & Gas	TVD Reference:	DFE @ 6737.5ft (GL + 13.5')
Project:	La Plata County CO	MD Reference:	DFE @ 6737.5ft (GL + 13.5')
Site:	SEC 33-T34N-R7W	North Reference:	Grid
Well:	La Plata 34-7-33 #1	Survey Calculation Method:	Minimum Curvature
Wellbore:	Lateral 1 ST1		
Design:	Plan #1		

Planned Survey									
Measured Depth (ft)	Inclination (°)	Azimuth (°)	Vertical Depth (ft)	+N/-S (ft)	+E/-W (ft)	Vertical Section (ft)	Dogleg Rate (°/100usft)	Build Rate (°/100usft)	Turn Rate (°/100usft)
0.0	0.00	0.00	0.0	0.0	0.0	0.0	0.00	0.00	0.00
100.0	0.00	0.00	100.0	0.0	0.0	0.0	0.00	0.00	0.00
200.0	0.00	0.00	200.0	0.0	0.0	0.0	0.00	0.00	0.00
300.0	0.00	0.00	300.0	0.0	0.0	0.0	0.00	0.00	0.00
400.0	0.00	0.00	400.0	0.0	0.0	0.0	0.00	0.00	0.00
500.0	3.00	307.89	500.0	1.6	-2.1	2.5	3.00	3.00	0.00
600.0	6.00	307.89	599.6	6.4	-8.3	10.2	3.00	3.00	0.00
700.0	9.00	307.89	698.8	14.4	-18.6	22.9	3.00	3.00	0.00
800.0	12.00	307.89	797.1	25.6	-32.9	40.6	3.00	3.00	0.00
900.0	15.00	307.89	894.3	40.0	-51.4	63.3	3.00	3.00	0.00
1,008.4	18.25	307.89	998.2	59.0	-75.8	93.4	3.00	3.00	0.00
1,100.0	18.25	307.89	1,085.2	76.6	-98.5	121.3	0.00	0.00	0.00
1,200.0	18.25	307.89	1,180.1	95.9	-123.2	151.8	0.00	0.00	0.00
1,300.0	18.25	307.89	1,275.1	115.1	-147.9	182.2	0.00	0.00	0.00
1,400.0	18.25	307.89	1,370.1	134.3	-172.6	212.7	0.00	0.00	0.00
1,500.0	18.25	307.89	1,465.0	153.6	-197.3	243.1	0.00	0.00	0.00
1,600.0	18.25	307.89	1,560.0	172.8	-222.1	273.6	0.00	0.00	0.00
1,700.0	18.25	307.89	1,655.0	192.0	-246.8	304.0	0.00	0.00	0.00
1,800.0	18.25	307.89	1,749.9	211.3	-271.5	334.5	0.00	0.00	0.00
1,900.0	18.25	307.89	1,844.9	230.5	-296.2	364.9	0.00	0.00	0.00
2,000.0	18.25	307.89	1,939.9	249.7	-320.9	395.4	0.00	0.00	0.00
2,100.0	18.25	307.89	2,034.8	269.0	-345.6	425.8	0.00	0.00	0.00
2,200.0	18.25	307.89	2,129.8	288.2	-370.4	456.3	0.00	0.00	0.00
2,300.0	18.25	307.89	2,224.8	307.4	-395.1	486.7	0.00	0.00	0.00
2,400.0	18.25	307.89	2,319.8	326.7	-419.8	517.2	0.00	0.00	0.00
2,500.0	18.25	307.89	2,414.7	345.9	-444.5	547.6	0.00	0.00	0.00
2,600.0	18.25	307.89	2,509.7	365.2	-469.2	578.1	0.00	0.00	0.00
2,700.0	18.25	307.89	2,604.7	384.4	-494.0	608.5	0.00	0.00	0.00
2,800.0	18.25	307.89	2,699.6	403.6	-518.7	639.0	0.00	0.00	0.00
2,895.0	18.25	307.89	2,789.8	421.9	-542.2	667.9	0.00	0.00	0.00
2,900.0	19.50	307.89	2,794.6	422.9	-543.4	669.5	25.00	25.00	0.00
2,920.0	24.50	307.89	2,813.1	427.5	-549.3	676.7	25.00	25.00	0.00
2,940.0	29.50	307.89	2,830.9	433.1	-556.5	685.6	25.00	25.00	0.00
2,960.0	34.50	307.89	2,847.9	439.6	-564.9	695.9	25.00	25.00	0.00
2,980.0	39.50	307.89	2,863.9	447.0	-574.4	707.6	25.00	25.00	0.00
3,000.0	44.50	307.89	2,878.7	455.2	-584.9	720.6	25.00	25.00	0.00
3,020.0	49.50	307.89	2,892.3	464.2	-596.5	734.8	25.00	25.00	0.00
3,040.0	54.50	307.89	2,904.7	473.8	-608.9	750.1	25.00	25.00	0.00
3,060.0	59.50	307.89	2,915.5	484.1	-622.1	766.4	25.00	25.00	0.00
3,080.0	64.50	307.89	2,924.9	495.0	-636.1	783.6	25.00	25.00	0.00
3,100.0	69.50	307.89	2,932.7	506.3	-650.6	801.5	25.00	25.00	0.00
3,120.0	74.50	307.89	2,938.9	518.0	-665.6	820.0	25.00	25.00	0.00
3,140.0	79.50	307.89	2,943.4	529.9	-681.0	838.9	25.00	25.00	0.00
3,160.0	84.50	307.89	2,946.2	542.1	-696.6	858.2	25.00	25.00	0.00
3,182.0	90.00	307.89	2,947.2	555.6	-713.9	879.5	25.00	25.00	0.00
3,200.0	90.00	306.81	2,947.2	566.5	-728.2	897.0	6.00	0.00	-6.00
3,250.0	90.00	309.81	2,947.2	597.5	-767.5	945.6	6.00	0.00	6.00
3,300.0	90.00	312.81	2,947.2	630.5	-805.0	993.4	6.00	0.00	6.00
3,350.0	90.00	315.81	2,947.2	665.4	-840.8	1,040.4	6.00	0.00	6.00
3,400.0	90.00	318.81	2,947.2	702.1	-874.7	1,086.4	6.00	0.00	6.00
3,450.0	90.00	321.81	2,947.2	740.6	-906.6	1,131.4	6.00	0.00	6.00
3,500.0	90.00	324.81	2,947.2	780.7	-936.5	1,175.1	6.00	0.00	6.00
3,550.0	90.00	327.81	2,947.2	822.3	-964.2	1,217.5	6.00	0.00	6.00
3,600.0	90.00	330.81	2,947.2	865.3	-989.7	1,258.5	6.00	0.00	6.00

Database:	EDM 5000.1 Old	Local Co-ordinate Reference:	Well La Plata 34-7-33 #1
Company:	Coleman Oil & Gas	TVD Reference:	DFE @ 6737.5ft (GL + 13.5')
Project:	La Plata County CO	MD Reference:	DFE @ 6737.5ft (GL + 13.5')
Site:	SEC 33-T34N-R7W	North Reference:	Grid
Well:	La Plata 34-7-33 #1	Survey Calculation Method:	Minimum Curvature
Wellbore:	Lateral 1 ST1		
Design:	Plan #1		

Planned Survey									
Measured Depth (ft)	Inclination (°)	Azimuth (°)	Vertical Depth (ft)	+N/-S (ft)	+E/-W (ft)	Vertical Section (ft)	Dogleg Rate (°/100usft)	Build Rate (°/100usft)	Turn Rate (°/100usft)
3,650.0	90.00	333.81	2,947.2	909.6	-1,013.0	1,297.9	6.00	0.00	6.00
3,700.0	90.00	336.81	2,947.2	955.0	-1,033.9	1,335.7	6.00	0.00	6.00
3,800.0	90.00	336.81	2,947.2	1,046.9	-1,073.2	1,409.5	0.00	0.00	0.00
3,900.0	90.08	331.81	2,947.2	1,137.0	-1,116.6	1,486.1	5.00	0.08	-5.00
4,000.0	90.15	326.81	2,947.0	1,223.0	-1,167.6	1,568.0	5.00	0.07	-5.00
4,100.0	90.22	321.81	2,946.7	1,304.2	-1,225.9	1,654.6	5.00	0.07	-5.00
4,200.0	90.29	316.81	2,946.2	1,380.0	-1,291.1	1,745.3	5.00	0.07	-5.00
4,300.0	90.36	311.81	2,945.6	1,449.8	-1,362.6	1,839.2	5.00	0.07	-5.00
4,400.0	90.43	306.81	2,944.9	1,513.1	-1,440.0	1,935.8	5.00	0.07	-5.00
4,500.0	90.49	301.81	2,944.1	1,569.5	-1,522.5	2,034.3	5.00	0.06	-5.00
4,600.0	90.55	296.81	2,943.2	1,618.4	-1,609.7	2,133.9	5.00	0.06	-5.00
4,700.0	90.61	291.81	2,942.2	1,659.6	-1,700.8	2,233.8	5.00	0.06	-5.00
4,800.0	90.66	286.81	2,941.1	1,692.6	-1,795.1	2,333.4	5.00	0.05	-5.00
4,900.0	90.71	281.81	2,939.9	1,717.3	-1,892.0	2,431.8	5.00	0.05	-5.00
5,000.0	90.75	276.81	2,938.6	1,733.5	-1,990.6	2,528.4	5.00	0.04	-5.00
5,100.0	90.78	271.81	2,937.3	1,741.0	-2,090.3	2,622.3	5.00	0.03	-5.00
5,133.3	90.79	270.15	2,936.8	1,741.6	-2,123.6	2,652.9	5.00	0.03	-5.00
5,200.0	90.79	270.15	2,935.9	1,741.8	-2,190.3	2,713.7	0.00	0.00	0.00
5,300.0	90.79	270.15	2,934.5	1,742.0	-2,290.3	2,804.9	0.00	0.00	0.00
5,400.0	90.79	270.15	2,933.2	1,742.3	-2,390.3	2,896.1	0.00	0.00	0.00
5,500.0	90.79	270.15	2,931.8	1,742.5	-2,490.3	2,987.3	0.00	0.00	0.00
5,600.0	90.79	270.15	2,930.4	1,742.8	-2,590.3	3,078.5	0.00	0.00	0.00
5,700.0	90.79	270.15	2,929.0	1,743.0	-2,690.3	3,169.7	0.00	0.00	0.00
5,800.0	90.79	270.15	2,927.6	1,743.3	-2,790.2	3,260.9	0.00	0.00	0.00
5,900.0	90.79	270.15	2,926.3	1,743.5	-2,890.2	3,352.0	0.00	0.00	0.00
6,000.0	90.79	270.15	2,924.9	1,743.8	-2,990.2	3,443.2	0.00	0.00	0.00
6,100.0	90.79	270.15	2,923.5	1,744.1	-3,090.2	3,534.4	0.00	0.00	0.00
6,200.0	90.79	270.15	2,922.1	1,744.3	-3,190.2	3,625.6	0.00	0.00	0.00
6,300.0	90.79	270.15	2,920.7	1,744.6	-3,290.2	3,716.8	0.00	0.00	0.00
6,400.0	90.79	270.15	2,919.3	1,744.8	-3,390.2	3,808.0	0.00	0.00	0.00
6,500.0	90.79	270.15	2,918.0	1,745.1	-3,490.2	3,899.2	0.00	0.00	0.00
6,600.0	90.79	270.15	2,916.6	1,745.3	-3,590.2	3,990.4	0.00	0.00	0.00
6,700.0	90.79	270.15	2,915.2	1,745.6	-3,690.2	4,081.6	0.00	0.00	0.00
6,800.0	90.79	270.15	2,913.8	1,745.8	-3,790.1	4,172.8	0.00	0.00	0.00
6,866.9	90.79	270.15	2,912.9	1,746.0	-3,857.0	4,233.8	0.00	0.00	0.00
LP 34-7-33 #1 L1 ST1 BHL									

Design Targets									
Target Name	Dip Angle (°)	Dip Dir. (°)	TVD (ft)	+N/-S (ft)	+E/-W (ft)	Northing (usft)	Easting (usft)	Latitude	Longitude
LP 34-7-33 #1 L1 ST1	0.00	360.00	2,912.9	1,746.0	-3,857.0	1,181,750.26	2,381,927.37	37° 8' 47.560 N	107° 37' 14.429 W
- hit/miss target									
- Shape									
- plan hits target center									
- Point									