

Coleman Oil & Gas

**La Plata County CO
SEC 33-T34N-R7W
La Plata 34-7-33 #1**

Lateral 1

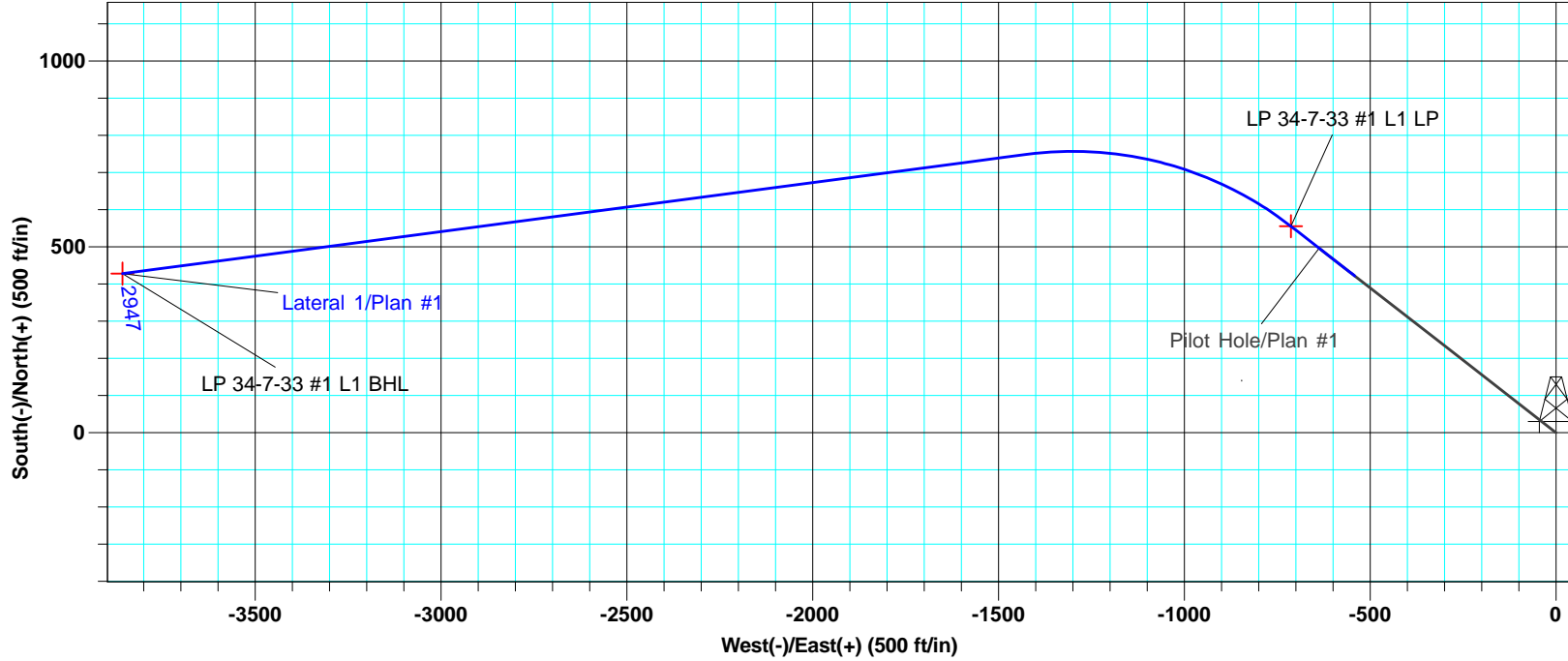
Plan: Plan #1

Standard Planning Report

21 August, 2014



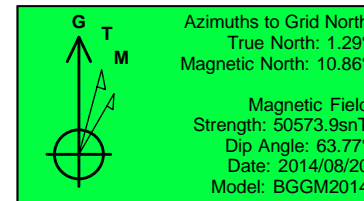
Project: La Plata County CO
 Site: SEC 33-T34N-R7W
 Well: La Plata 34-7-33 #1
 Wellbore: Lateral 1
 Design: Plan #1



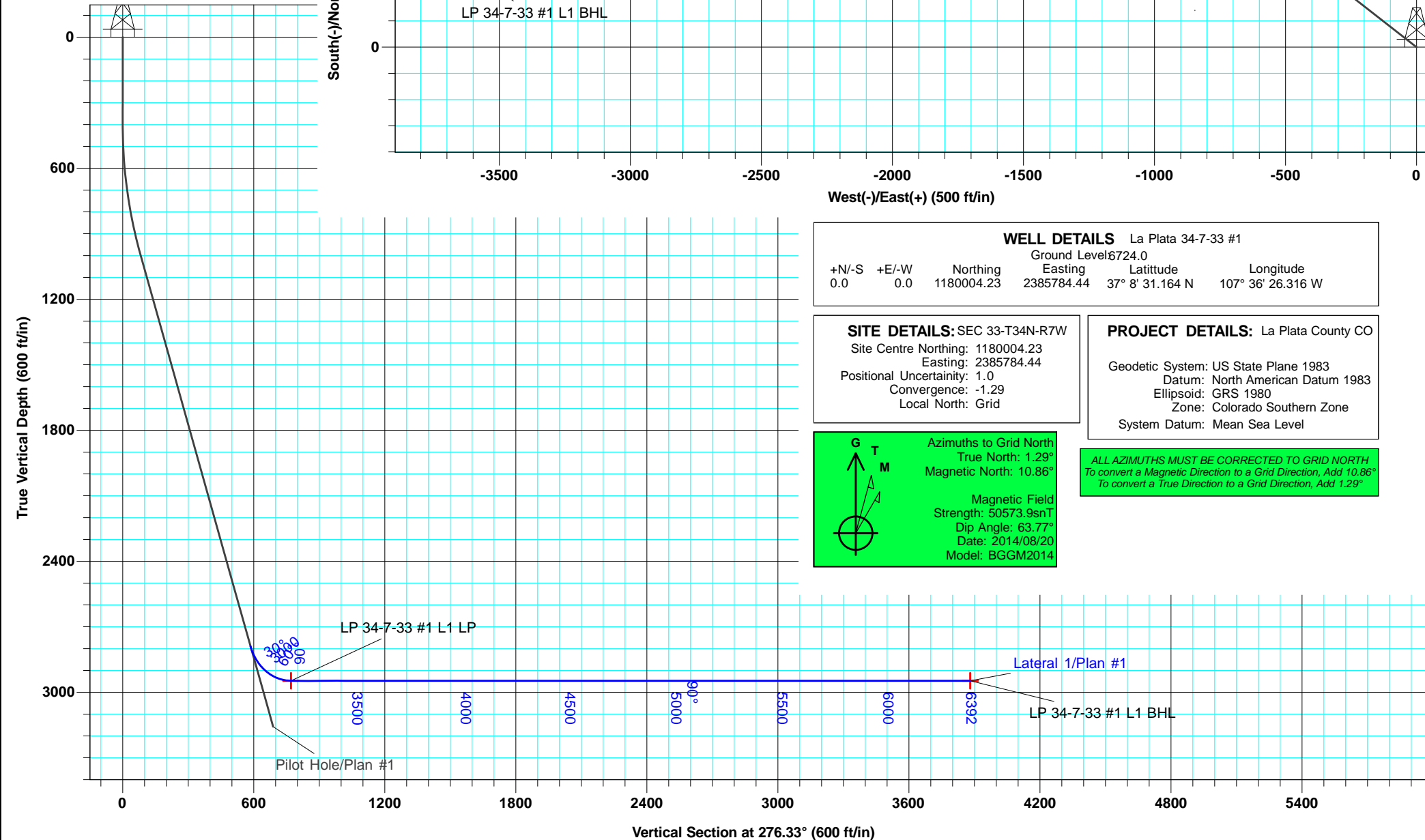
WELL DETAILS La Plata 34-7-33 #1						
Ground Level: 6724.0						
+N/-S	+E/-W	Northing	Easting	Latitude	Longitude	
0.0	0.0	1180004.23	2385784.44	37° 8' 31.164 N	107° 36' 26.316 W	

SITE DETAILS: SEC 33-T34N-R7W	
Site Centre Northing:	1180004.23
Easting:	2385784.44
Positional Uncertainty:	1.0
Convergence:	-1.29
Local North:	Grid

PROJECT DETAILS: La Plata County CO	
Geodetic System:	US State Plane 1983
Datum:	North American Datum 1983
Ellipsoid:	GRS 1980
Zone:	Colorado Southern Zone
System Datum:	Mean Sea Level



ALL AZIMUTHS MUST BE CORRECTED TO GRID NORTH
 To convert a Magnetic Direction to a Grid Direction, Add 10.86°
 To convert a True Direction to a Grid Direction, Add 1.29°



Database:	EDM 5000.1 Old	Local Co-ordinate Reference:	Well La Plata 34-7-33 #1
Company:	Coleman Oil & Gas	TVD Reference:	DFE @ 6737.5ft (GL + 13.5')
Project:	La Plata County CO	MD Reference:	DFE @ 6737.5ft (GL + 13.5')
Site:	SEC 33-T34N-R7W	North Reference:	Grid
Well:	La Plata 34-7-33 #1	Survey Calculation Method:	Minimum Curvature
Wellbore:	Lateral 1		
Design:	Plan #1		

Project	La Plata County CO		
Map System:	US State Plane 1983	System Datum:	Mean Sea Level
Geo Datum:	North American Datum 1983		Using Well Reference Point
Map Zone:	Colorado Southern Zone		Using geodetic scale factor

Site	SEC 33-T34N-R7W		
Site Position:		Northing:	1,180,004.23 usft
From:	Lat/Long	Easting:	2,385,784.44 usft
Position Uncertainty:	1.0 ft	Slot Radius:	6-1/8 "
		Latitude:	37° 8' 31.164 N
		Longitude:	107° 36' 26.316 W
		Grid Convergence:	-1.29 °

Well	La Plata 34-7-33 #1, FC Horizontals		
Well Position	+N/-S	0.0 ft	Northing: 1,180,004.23 usft
	+E/-W	0.0 ft	Easting: 2,385,784.44 usft
Position Uncertainty		1.0 ft	Wellhead Elevation:
			Ground Level: 6,724.0 ft

Wellbore	Lateral 1				
Magnetics	Model Name	Sample Date	Declination (°)	Dip Angle (°)	Field Strength (nT)
	BGGM2014	2014/08/20	9.57	63.77	50,574

Design	Plan #1				
Audit Notes:					
Version:	Phase:	PLAN		Tie On Depth:	2,895.0
Vertical Section:	Depth From (TVD) (ft)	+N/-S (ft)	+E/-W (ft)	Direction (°)	
	0.0	0.0	0.0	276.33	

Plan Sections										
Measured Depth (ft)	Inclination (°)	Azimuth (°)	Vertical Depth (ft)	+N/-S (ft)	+E/-W (ft)	Dogleg Rate (°/100usft)	Build Rate (°/100usft)	Turn Rate (°/100usft)	TFO (°)	Target
2,895.0	18.25	307.89	2,789.8	421.9	-542.2	0.00	0.00	0.00	0.00	
3,182.0	90.00	307.89	2,947.2	555.6	-713.9	25.00	25.00	0.00	0.00	LP 34-7-33 #1 L1 L
3,938.7	90.00	262.49	2,947.2	748.7	-1,425.2	6.00	0.00	-6.00	-89.99	
6,391.5	90.00	262.49	2,947.0	428.0	-3,857.0	0.00	0.00	0.00	0.00	LP 34-7-33 #1 L1 B

Database:	EDM 5000.1 Old	Local Co-ordinate Reference:	Well La Plata 34-7-33 #1
Company:	Coleman Oil & Gas	TVD Reference:	DFE @ 6737.5ft (GL + 13.5')
Project:	La Plata County CO	MD Reference:	DFE @ 6737.5ft (GL + 13.5')
Site:	SEC 33-T34N-R7W	North Reference:	Grid
Well:	La Plata 34-7-33 #1	Survey Calculation Method:	Minimum Curvature
Wellbore:	Lateral 1		
Design:	Plan #1		

Planned Survey									
Measured Depth (ft)	Inclination (°)	Azimuth (°)	Vertical Depth (ft)	+N/-S (ft)	+E/-W (ft)	Vertical Section (ft)	Dogleg Rate (°/100usft)	Build Rate (°/100usft)	Turn Rate (°/100usft)
0.0	0.00	0.00	0.0	0.0	0.0	0.0	0.00	0.00	0.00
100.0	0.00	0.00	100.0	0.0	0.0	0.0	0.00	0.00	0.00
200.0	0.00	0.00	200.0	0.0	0.0	0.0	0.00	0.00	0.00
300.0	0.00	0.00	300.0	0.0	0.0	0.0	0.00	0.00	0.00
400.0	0.00	0.00	400.0	0.0	0.0	0.0	0.00	0.00	0.00
500.0	3.00	307.89	500.0	1.6	-2.1	2.2	3.00	3.00	0.00
600.0	6.00	307.89	599.6	6.4	-8.3	8.9	3.00	3.00	0.00
700.0	9.00	307.89	698.8	14.4	-18.6	20.0	3.00	3.00	0.00
800.0	12.00	307.89	797.1	25.6	-32.9	35.6	3.00	3.00	0.00
900.0	15.00	307.89	894.3	40.0	-51.4	55.5	3.00	3.00	0.00
1,008.4	18.25	307.89	998.2	59.0	-75.8	81.9	3.00	3.00	0.00
1,100.0	18.25	307.89	1,085.2	76.6	-98.5	106.3	0.00	0.00	0.00
1,200.0	18.25	307.89	1,180.1	95.9	-123.2	133.0	0.00	0.00	0.00
1,300.0	18.25	307.89	1,275.1	115.1	-147.9	159.7	0.00	0.00	0.00
1,400.0	18.25	307.89	1,370.1	134.3	-172.6	186.4	0.00	0.00	0.00
1,500.0	18.25	307.89	1,465.0	153.6	-197.3	213.1	0.00	0.00	0.00
1,600.0	18.25	307.89	1,560.0	172.8	-222.1	239.8	0.00	0.00	0.00
1,700.0	18.25	307.89	1,655.0	192.0	-246.8	266.5	0.00	0.00	0.00
1,800.0	18.25	307.89	1,749.9	211.3	-271.5	293.1	0.00	0.00	0.00
1,900.0	18.25	307.89	1,844.9	230.5	-296.2	319.8	0.00	0.00	0.00
2,000.0	18.25	307.89	1,939.9	249.7	-320.9	346.5	0.00	0.00	0.00
2,100.0	18.25	307.89	2,034.8	269.0	-345.6	373.2	0.00	0.00	0.00
2,200.0	18.25	307.89	2,129.8	288.2	-370.4	399.9	0.00	0.00	0.00
2,300.0	18.25	307.89	2,224.8	307.4	-395.1	426.6	0.00	0.00	0.00
2,400.0	18.25	307.89	2,319.8	326.7	-419.8	453.3	0.00	0.00	0.00
2,500.0	18.25	307.89	2,414.7	345.9	-444.5	480.0	0.00	0.00	0.00
2,600.0	18.25	307.89	2,509.7	365.2	-469.2	506.6	0.00	0.00	0.00
2,700.0	18.25	307.89	2,604.7	384.4	-494.0	533.3	0.00	0.00	0.00
2,800.0	18.25	307.89	2,699.6	403.6	-518.7	560.0	0.00	0.00	0.00
2,895.0	18.25	307.89	2,789.8	421.9	-542.2	585.4	0.00	0.00	0.00
2,900.0	19.50	307.89	2,794.6	422.9	-543.4	586.8	25.00	25.00	0.00
2,920.0	24.50	307.89	2,813.1	427.5	-549.3	593.1	25.00	25.00	0.00
2,940.0	29.50	307.89	2,830.9	433.1	-556.5	600.9	25.00	25.00	0.00
2,960.0	34.50	307.89	2,847.9	439.6	-564.9	609.9	25.00	25.00	0.00
2,980.0	39.50	307.89	2,863.8	447.0	-574.4	620.2	25.00	25.00	0.00
3,000.0	44.50	307.89	2,878.7	455.2	-584.9	631.6	25.00	25.00	0.00
3,020.0	49.50	307.89	2,892.3	464.2	-596.5	644.0	25.00	25.00	0.00
3,040.0	54.50	307.89	2,904.7	473.8	-608.9	657.4	25.00	25.00	0.00
3,060.0	59.50	307.89	2,915.5	484.1	-622.1	671.7	25.00	25.00	0.00
3,080.0	64.50	307.89	2,924.9	495.0	-636.1	686.8	25.00	25.00	0.00
3,100.0	69.50	307.89	2,932.7	506.3	-650.6	702.5	25.00	25.00	0.00
3,120.0	74.50	307.89	2,938.9	518.0	-665.6	718.7	25.00	25.00	0.00
3,140.0	79.50	307.89	2,943.4	529.9	-681.0	735.3	25.00	25.00	0.00
3,160.0	84.50	307.89	2,946.2	542.1	-696.6	752.1	25.00	25.00	0.00
3,182.0	90.00	307.89	2,947.2	555.6	-713.9	770.8	25.00	25.00	0.00
LP 34-7-33 #1 L1 LP									
3,200.0	90.00	306.81	2,947.2	566.5	-728.2	786.3	6.00	0.00	-6.00
3,250.0	90.00	303.81	2,947.2	595.4	-769.0	830.0	6.00	0.00	-6.00
3,300.0	90.00	300.81	2,947.2	622.1	-811.3	875.0	6.00	0.00	-6.00
3,350.0	90.00	297.81	2,947.2	646.6	-854.9	921.0	6.00	0.00	-6.00
3,400.0	90.00	294.81	2,947.2	668.7	-899.7	968.0	6.00	0.00	-6.00
3,450.0	90.00	291.81	2,947.2	688.5	-945.6	1,015.8	6.00	0.00	-6.00
3,500.0	90.00	288.81	2,947.2	705.9	-992.5	1,064.3	6.00	0.00	-6.00
3,550.0	90.00	285.81	2,947.2	720.7	-1,040.2	1,113.4	6.00	0.00	-6.00

Database:	EDM 5000.1 Old	Local Co-ordinate Reference:	Well La Plata 34-7-33 #1
Company:	Coleman Oil & Gas	TVD Reference:	DFE @ 6737.5ft (GL + 13.5')
Project:	La Plata County CO	MD Reference:	DFE @ 6737.5ft (GL + 13.5')
Site:	SEC 33-T34N-R7W	North Reference:	Grid
Well:	La Plata 34-7-33 #1	Survey Calculation Method:	Minimum Curvature
Wellbore:	Lateral 1		
Design:	Plan #1		

Planned Survey										
Measured Depth (ft)	Inclination (°)	Azimuth (°)	Vertical Depth (ft)	+N/-S (ft)	+E/-W (ft)	Vertical Section (ft)	Dogleg Rate (°/100usft)	Build Rate (°/100usft)	Turn Rate (°/100usft)	
3,600.0	90.00	282.81	2,947.2	733.1	-1,088.7	1,162.9	6.00	0.00	-6.00	
3,650.0	90.00	279.81	2,947.2	742.9	-1,137.7	1,212.7	6.00	0.00	-6.00	
3,700.0	90.00	276.81	2,947.2	750.1	-1,187.2	1,262.7	6.00	0.00	-6.00	
3,750.0	90.00	273.81	2,947.2	754.8	-1,236.9	1,312.6	6.00	0.00	-6.00	
3,800.0	90.00	270.81	2,947.2	756.8	-1,286.9	1,362.5	6.00	0.00	-6.00	
3,850.0	90.00	267.81	2,947.2	756.2	-1,336.9	1,412.1	6.00	0.00	-6.00	
3,900.0	90.00	264.81	2,947.2	752.9	-1,386.8	1,461.4	6.00	0.00	-6.00	
3,938.7	90.00	262.49	2,947.2	748.7	-1,425.2	1,499.1	6.00	0.00	-6.00	
4,000.0	90.00	262.49	2,947.2	740.7	-1,486.0	1,558.6	0.00	0.00	0.00	
4,100.0	90.00	262.49	2,947.2	727.6	-1,585.2	1,655.7	0.00	0.00	0.00	
4,200.0	90.00	262.49	2,947.2	714.5	-1,684.3	1,752.8	0.00	0.00	0.00	
4,300.0	90.00	262.49	2,947.2	701.4	-1,783.4	1,849.9	0.00	0.00	0.00	
4,400.0	90.00	262.49	2,947.2	688.4	-1,882.6	1,947.0	0.00	0.00	0.00	
4,500.0	90.00	262.49	2,947.2	675.3	-1,981.7	2,044.1	0.00	0.00	0.00	
4,600.0	90.00	262.49	2,947.2	662.2	-2,080.9	2,141.2	0.00	0.00	0.00	
4,700.0	90.00	262.49	2,947.1	649.1	-2,180.0	2,238.3	0.00	0.00	0.00	
4,800.0	90.00	262.49	2,947.1	636.1	-2,279.1	2,335.4	0.00	0.00	0.00	
4,900.0	90.00	262.49	2,947.1	623.0	-2,378.3	2,432.5	0.00	0.00	0.00	
5,000.0	90.00	262.49	2,947.1	609.9	-2,477.4	2,529.6	0.00	0.00	0.00	
5,100.0	90.00	262.49	2,947.1	596.8	-2,576.6	2,626.7	0.00	0.00	0.00	
5,200.0	90.00	262.49	2,947.1	583.8	-2,675.7	2,723.8	0.00	0.00	0.00	
5,300.0	90.00	262.49	2,947.1	570.7	-2,774.9	2,820.9	0.00	0.00	0.00	
5,400.0	90.00	262.49	2,947.1	557.6	-2,874.0	2,918.0	0.00	0.00	0.00	
5,500.0	90.00	262.49	2,947.1	544.6	-2,973.1	3,015.1	0.00	0.00	0.00	
5,600.0	90.00	262.49	2,947.1	531.5	-3,072.3	3,112.2	0.00	0.00	0.00	
5,700.0	90.00	262.49	2,947.1	518.4	-3,171.4	3,209.3	0.00	0.00	0.00	
5,800.0	90.00	262.49	2,947.1	505.3	-3,270.6	3,306.3	0.00	0.00	0.00	
5,900.0	90.00	262.49	2,947.0	492.3	-3,369.7	3,403.4	0.00	0.00	0.00	
6,000.0	90.00	262.49	2,947.0	479.2	-3,468.9	3,500.5	0.00	0.00	0.00	
6,100.0	90.00	262.49	2,947.0	466.1	-3,568.0	3,597.6	0.00	0.00	0.00	
6,200.0	90.00	262.49	2,947.0	453.0	-3,667.1	3,694.7	0.00	0.00	0.00	
6,300.0	90.00	262.49	2,947.0	440.0	-3,766.3	3,791.8	0.00	0.00	0.00	
6,391.5	90.00	262.49	2,947.0	428.0	-3,857.0	3,880.7	0.00	0.00	0.00	
LP 34-7-33 #1 L1 BHL										

Design Targets										
Target Name	Dip Angle (°)	Dip Dir. (°)	TVD (ft)	+N/-S (ft)	+E/-W (ft)	Northing (usft)	Easting (usft)	Latitude Longitude		
LP 34-7-33 #1 L1 BHL - hit/miss target - Shape - Point	0.00	0.00	2,947.0	428.0	-3,857.0	1,180,432.24	2,381,927.37	37° 8' 34.532 N 107° 37' 14.059 W		
LP 34-7-33 #1 L1 LP - plan hits target center - Point	0.00	0.00	2,947.2	555.6	-713.9	1,180,559.80	2,385,070.51	37° 8' 36.496 N 107° 36' 35.286 W		