



Scale: 5' / 100'
Measured Depth Log

Well Name Barefoot 30C- 25HZ

Location SEC.25-T3N-R68W

State COLORADO

County WELD

Country USA

Rig Number XTREME 8

API Number 05123391890000

AFE # 2092717

Region DJ BASIN

Field WATTENBERG

Spud Date 8/27/2014

Drilling Completed 9/4/2014

Surface Coordinates 539FNL & 514FEL, SEC.25

Bottom Hole Coordinates RELATIVE TO WELLHEAD:
228.22 N & 4595.73' W

Ground Elevation 4891'

K.B. Elevation 4908'

Logged Interval 6887' To 13369

Total Depth 13369'

Formation CODELL

Type of Drilling Fluid FRESH WATER

Operator

Company ANADARKO PETROLEUM INC

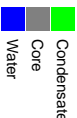
Address 1099 18th St, Suite 1800
Denver , CO 80202

Geologist

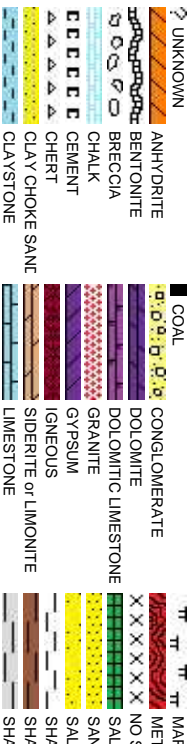
Name Jim Frank, John Sabroske

Company COLUMBINE LOGGING, INC.
Address 2385 S. Lipan St.
Denver, CO 80223

Zone Color Coding



Rock Types



Accessories

Fossils

	GASTROPOD
	INOCERAMUS
	OOOLITE
	AMPHIPORA
	OSTRACOD
	BELEMNITE
	BIOCLASTIC
	BRACHIOPOD
	BRYOZOA
	CEPHALOPOD
	CORAL
	CRINOID
	ECHINOID
	FISH
	FORAMINIFERA
	F FOSSIL

Minerals

	ARGILLITE GRAIN
	B BENTONITE
	H HEAVY MINERAL
	K KAOLIN
	M MARCASITE
	BRECCIA FRAGMENTS
	C CALCAREOUS
	CARBONACEOUS FLAKES
	CHERT
	CHTLT
	COAL - THIN BEDS
	D DOLOMITIC
	F FELDSPAR
	FERRUGINOUS PELLET
	F FERRUGINOUS
	G GLAUCONITE
	G GYPSIFEROUS
	S SILICEOUS
	S SILTY
	T TUFFACEOUS

Stringer

	ANHYDRITE STRINGER
	BENTONITE STRINGER
	COAL STRINGER
	DOLOMITE STRINGER
	GYPSUM STRINGER
	LIMESTONE STRINGER
	MARLSTONE (CALC) STRG
	MARLSTONE (DOL) STRG
	SANDSTONE STRINGER
	SHALE STRINGER
	SILTSTONE STRINGER

Other Symbols

Oil Show

	P PINPOINT
	V VUGGY
	D DEAD
	E EVEN
	Q QUESTIONABLE
	BIT
	SPOTTED STAINING
	CONNECTION (UP)

Engineering

	DST INTERVAL
	FAULT
	FORMATION TOP
	GAS SHOW
	OIL SHOW
	MN DEPTH UP

	WIRELINE TESTED - LEFT
	WIRELINE TESTED - RT
	DRILL STEM TEST
	MN DEPTH
	G GRAINSTONE
	L LITHOGRAPHIC
	MX MICROXLN
	M MUDSTONE

Rounding

	A ANGULAR
--	-----------

	P PACKSTONE
--	-------------

Porosity

	CONNECTION GAS
	CONNECTION GAS (LEFT)
	TRIP GAS
	TRIP GAS (LEFT)

	NORMAL FAULT
	OVERTURED STRATA
	REVERSE FAULT
	CASING

	S SUBANG
	S SUBSAND
	W WACKESTONE

Sorting

	F FRACTURE
--	------------

	DOWN TIME GAS
--	---------------

	M MODERATE
--	------------

	INTERCRYSTALLINE
--	------------------

	DOWN TIME GAS (LEFT)
--	----------------------

	SIDEWALL CORE (LEFT)
--	----------------------

	P POOR
--	--------

	INTEROOLITIC
--	--------------

	CORE - LOST
--	-------------

	SIDEWALL CORE (RIGHT)
--	-----------------------

	W WELL
--	--------

	MOLDIC
--	--------

	SLIDE
--	-------

	B BOUNDSTONE
--	--------------

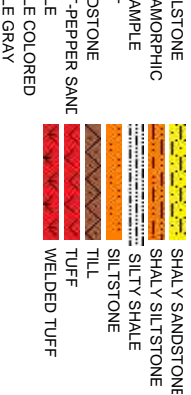
	C CHALKY
--	----------

	ORGANIC
--	---------

	CORE - RECOVERED
--	------------------

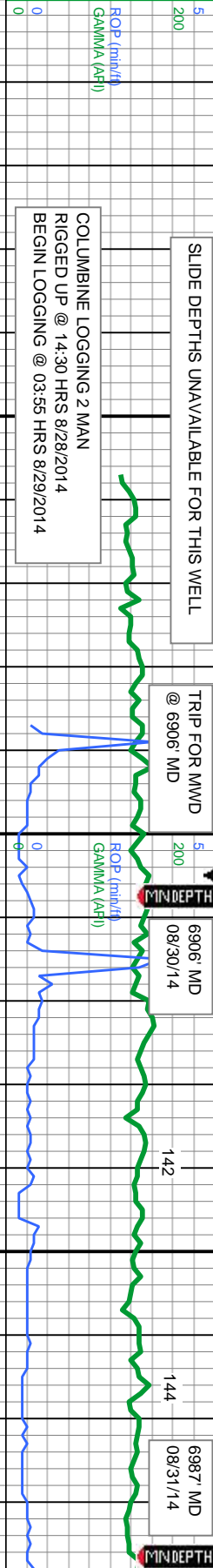
	SURVEY
--	--------

	C CRYPTOXLN
--	-------------



Slide/Rotate

ROP
ROP
GAMMA

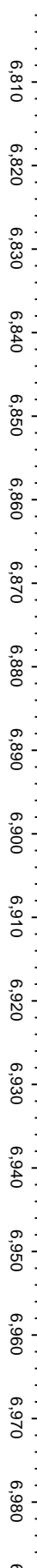


ROP & GAS DATA PROVIDED BY PASON
GAMMA & SURVEY DATA PROVIDED BY BAKER HUGHES

DRLG 8.75" HOLE W/ BIT #2
SMITH SD611, IN @ 1397' MD

Depth Labels

GAS (units)



% Lith

6600

WT: 10.10
VIS: 60

DRILLING IN
SUSSEX FM

MD: 6,891
TVD: 6,613.13
Inclination: 1.44
Azimuth: 207.61
VS: -1,519.76

Well Bore
TVD

TVD (ft)

KOP = 6887' MD

TVD (ft)

MD: 6,934
TVD: 6,656.11
Inclination: 2.82
Azimuth: 271.55
VS: -1,518.45

MD: 6,976
TVD: 6,697.94
Inclination: 6.99
Azimuth: 271.53
VS: -1,514.86

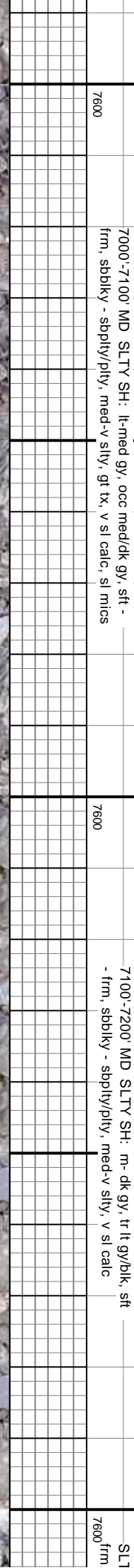
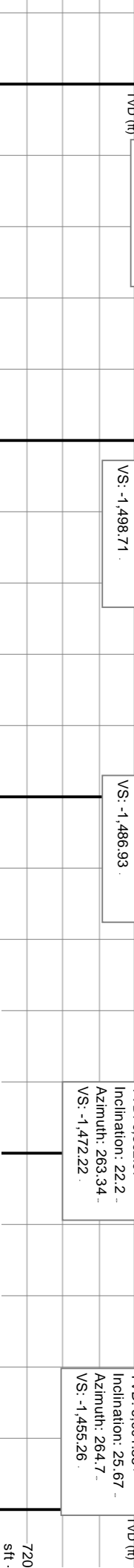
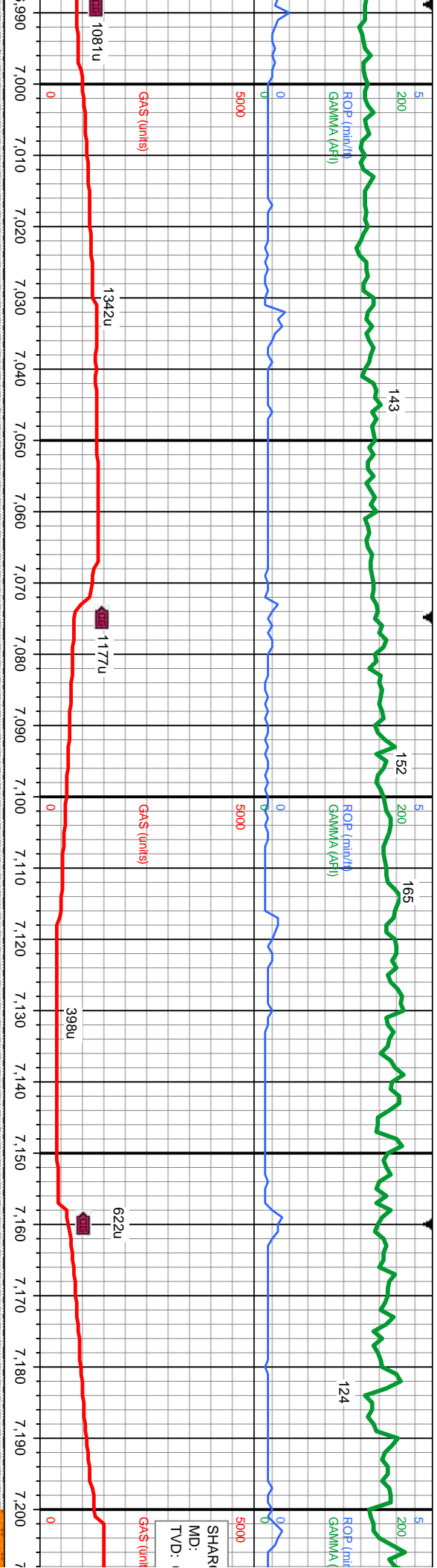
6887'-7000' MD SLTY SH. lt-med gy, occ gy, sft - frm,
sdblk - sdbly/plty, med-v slty, gt tx, v sl calc, sl mics

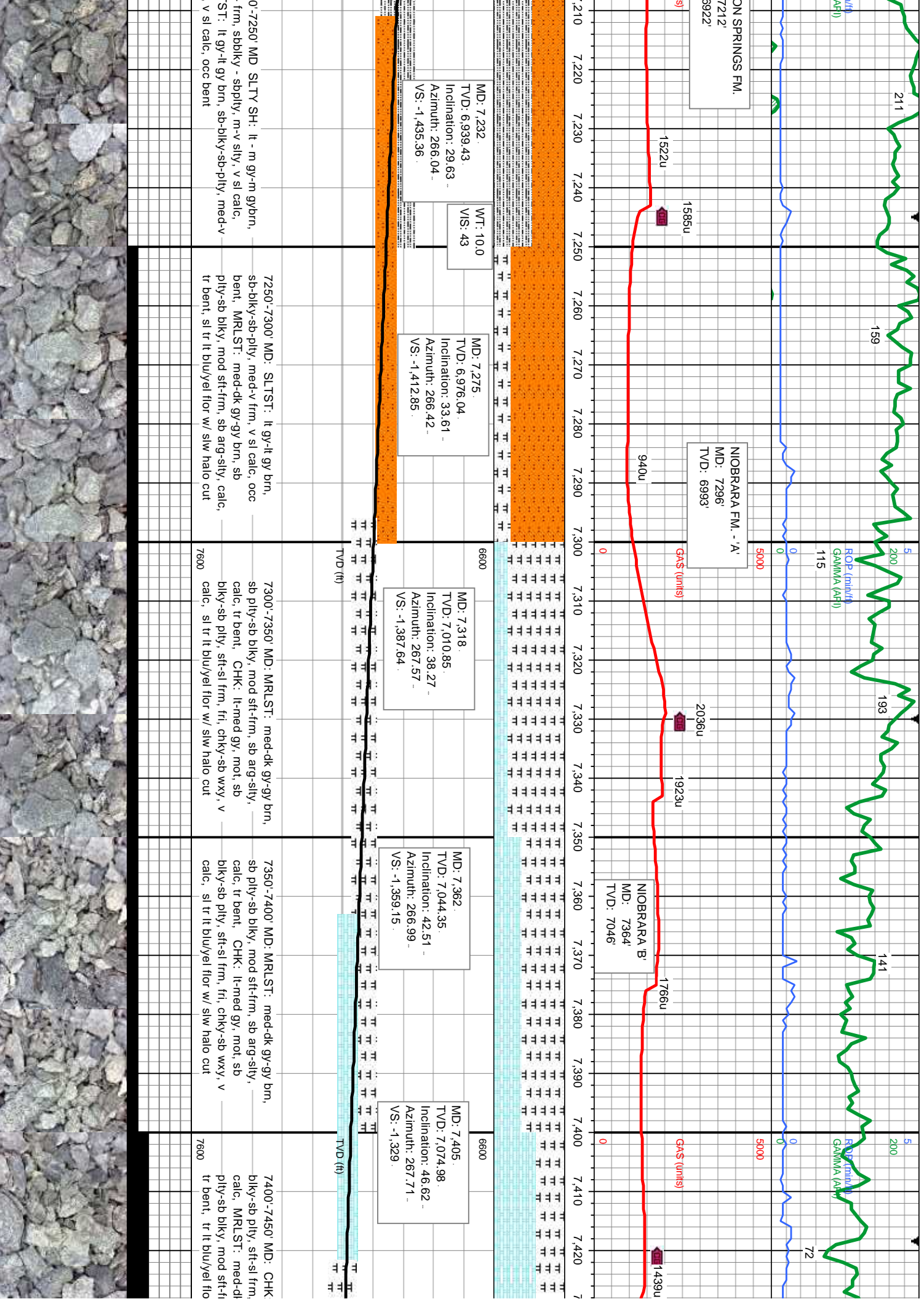
Oil Show

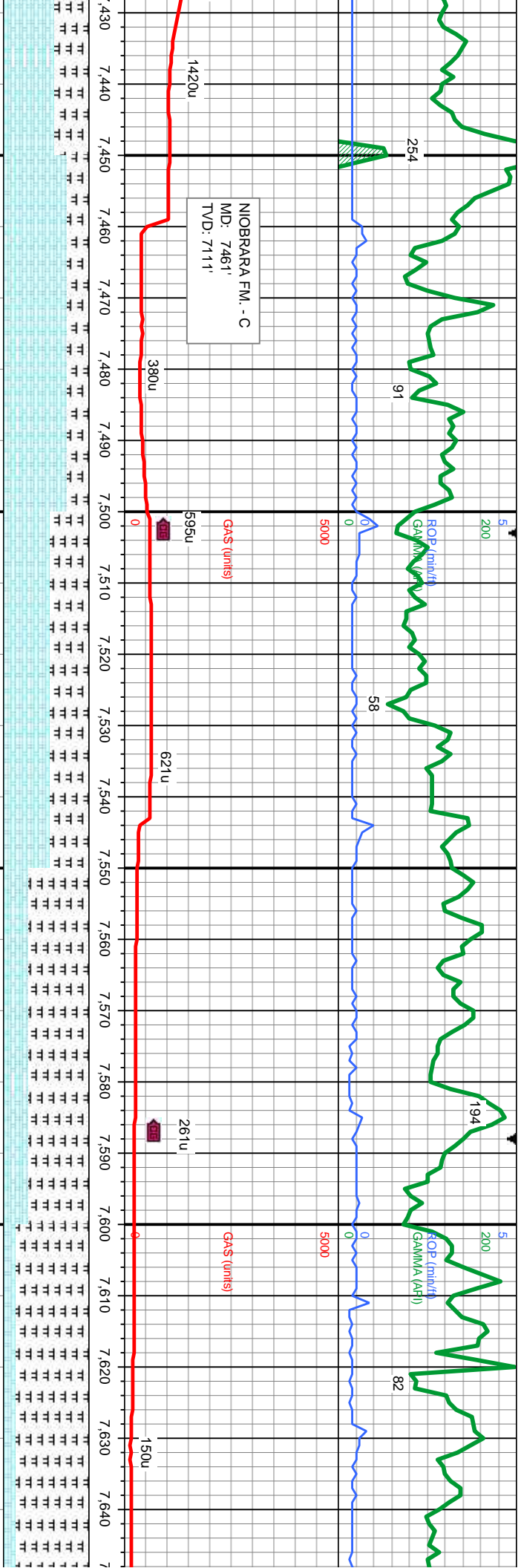
E
G
M
F
T
S

Images









MD: 7,447.
TVD: 7,102.69
Inclination: 50.82 -
Azimuth: 268.27
VS: -1,297.45

MD: 7,490.
TVD: 7,128.4
Inclination: 55.7 -
Azimuth: 268.67
VS: -1,263.01

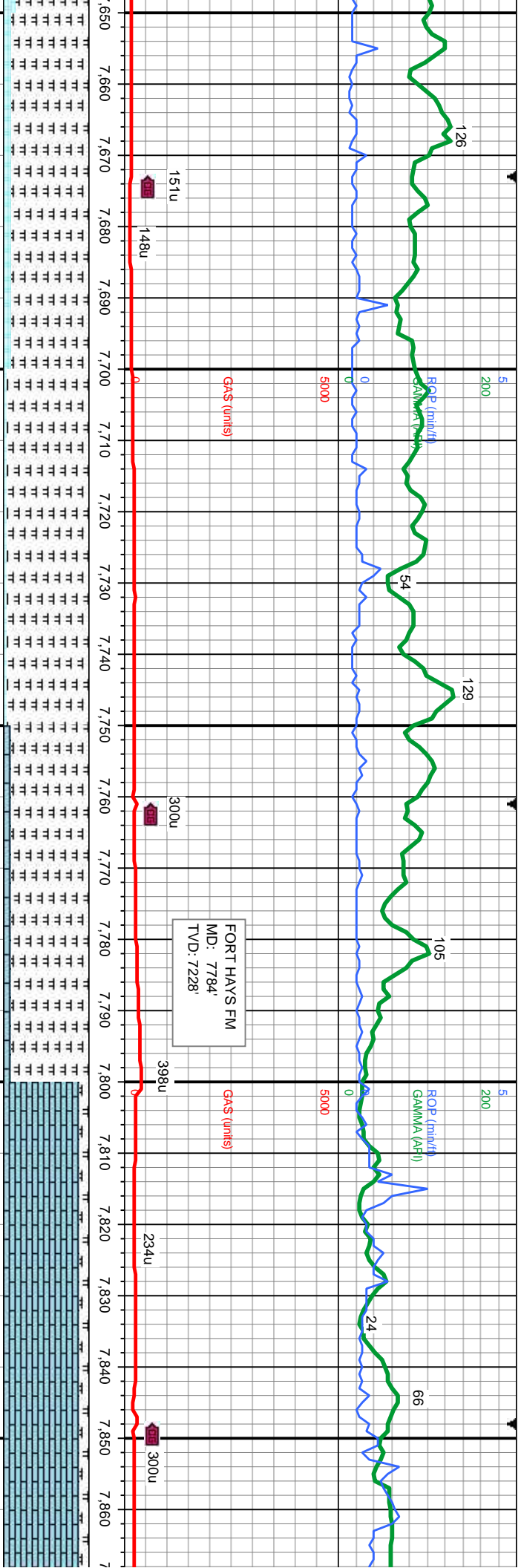
MD: 7,533.
TVD: 7,150.98
Inclination: 60.92 -
Azimuth: 270.05
VS: -1,226.43

MD: 7,575.
TVD: 7,169.89
Inclination: 65.57 -
Azimuth: 271.8
VS: -1,188.96

MD: 7,618.
TVD: 7,186.49
Inclination: 69 -
Azimuth: 271.88
VS: -1,149.34

lt-med gy, mot, sb fri, chky-sb wxy, v gy-gy brn, sb m, sb arg-sily, calc, tr w/ slw halo cut	7450'-7500' MD: CHK: lt-med gy, mot, sb blky-sb ply, sft-sl frm, fri, chky-sb wxy, v calc, MRLST: med-dk gy-gy brn, sb ply-sb blky, mod sft-frm, sb arg-sily, calc, tr bent, tr lt blu/yel flr w/ slw halo cut	7500'-7550' MD: CHK: lt-med gy, mot, sb blky-sb ply, sft-sl frm, fri, chky-sb wxy, v calc, MRLST: med-dk gy-gy brn, sb ply-sb blky, mod sft-frm, sb arg-sily, calc, tr bent, tr lt blu/yel flr w/ slw halo cut	7550'-7600' MD: MRLST: med-dk gy-gy brn, sb ply-sb blky, mod sft-frm, sb arg-sily, calc, abt bent, CHK: lt-med gy, mot, sb blky-sb ply, sft-sl frm, fri, chky-sb wxy, v calc, sl tr lt blu/yel flr w/ slw halo cut	7600'-7650' MD: MRLST: med-dk gy-gy brn sb ply-sb blky, mod sft-frm, sb arg-sily, calc, abt bent, CHK: lt-med gy, mot, sb blky-sb ply, sft-sl frm, fri, chky-sb wxy, v calc, sl tr lt blu/yel flr w/ slw halo cut
---	--	--	--	---





MD: 7.662.
TVD: 7.200.76.
Inclination: 73.13 -
Azimuth: 272.27 -
VS: -1.107.78 .

MD: 7.705.
TVD: 7.211.96.
Inclination: 76.67 -
Azimuth: 272.89 -
VS: -1.066.34 .

MD: 7.749.
TVD: 7.221.19.
Inclination: 79.12 -
Azimuth: 273.46 -
VS: -1.023.42 .

MD: 7.793.
TVD: 7.229.26.
Inclination: 79.73 -
Azimuth: 273.87 -
VS: -980.29 .

MD: 7.835.
TVD: 7.235.6.
Inclination: 82.92 -
Azimuth: 274.1 -
VS: -938.92 .

MD: 7.847.
TVD: 7.236.97.
Inclination: 84 -
Azimuth: 273.93 -
VS: -927.03 .

7650'-7700' MD: MRLST: med-dk gy-gy brn, sb pily-sb blkly, mod sft-frm, sb arg-sily, calc, abnt bent, CHK: lt-med gy, mot, sb blkly-sb pily, sft-si frm, fri, chky-sb wxy, v calc, sl tr lt blu/yel flor w/ slw halo cut

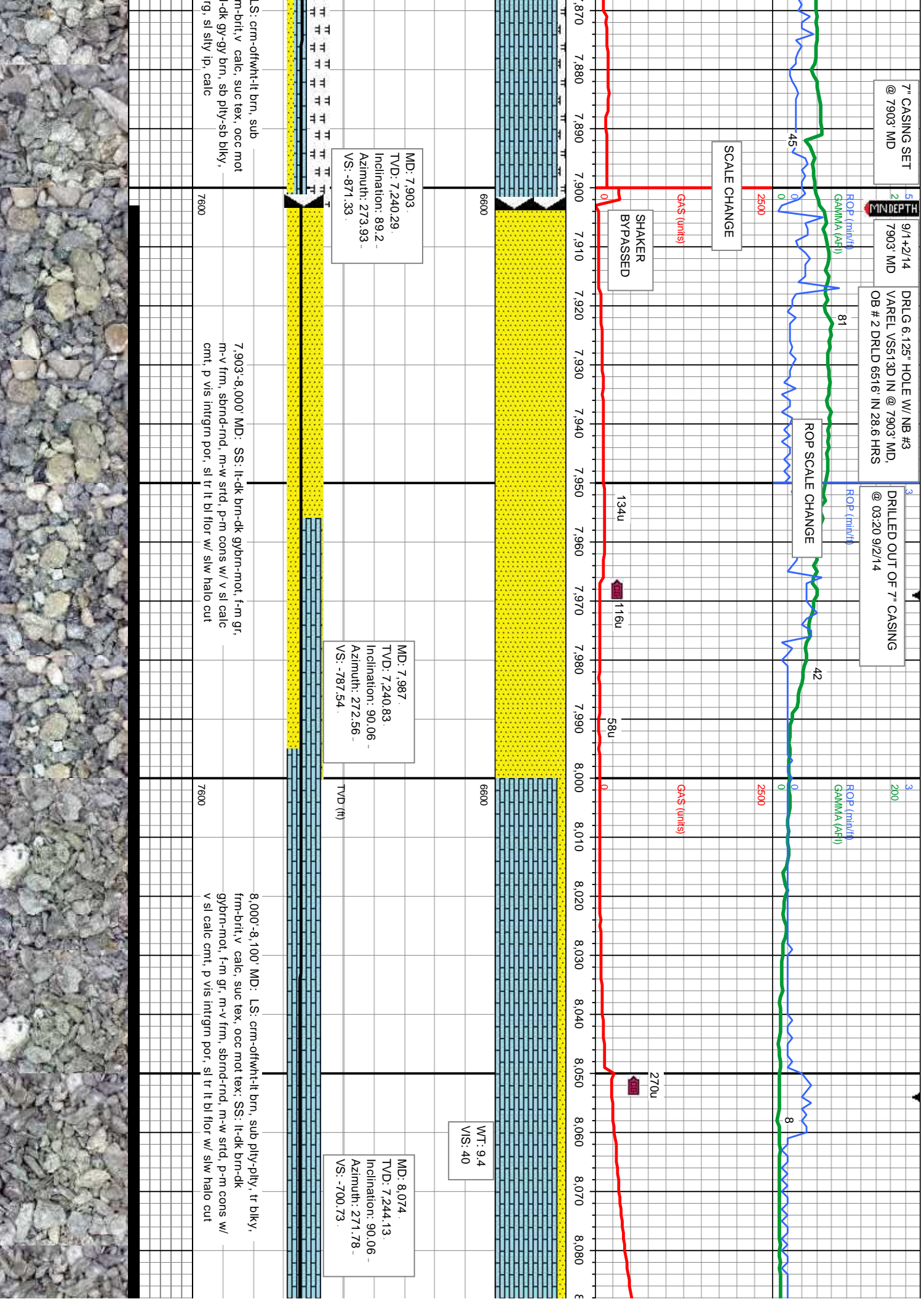
7700'-7750' MD: MRLST: med-dk gy-gy brn, sb pily-sb blkly, mod sft-frm, sb arg-sily, calc, abnt bent, CHK: lt-med gy, mot, sb blkly-sb pily, sft-si frm, fri, chky-sb wxy, v calc, sl tr lt blu/yel flor w/ slw halo cut

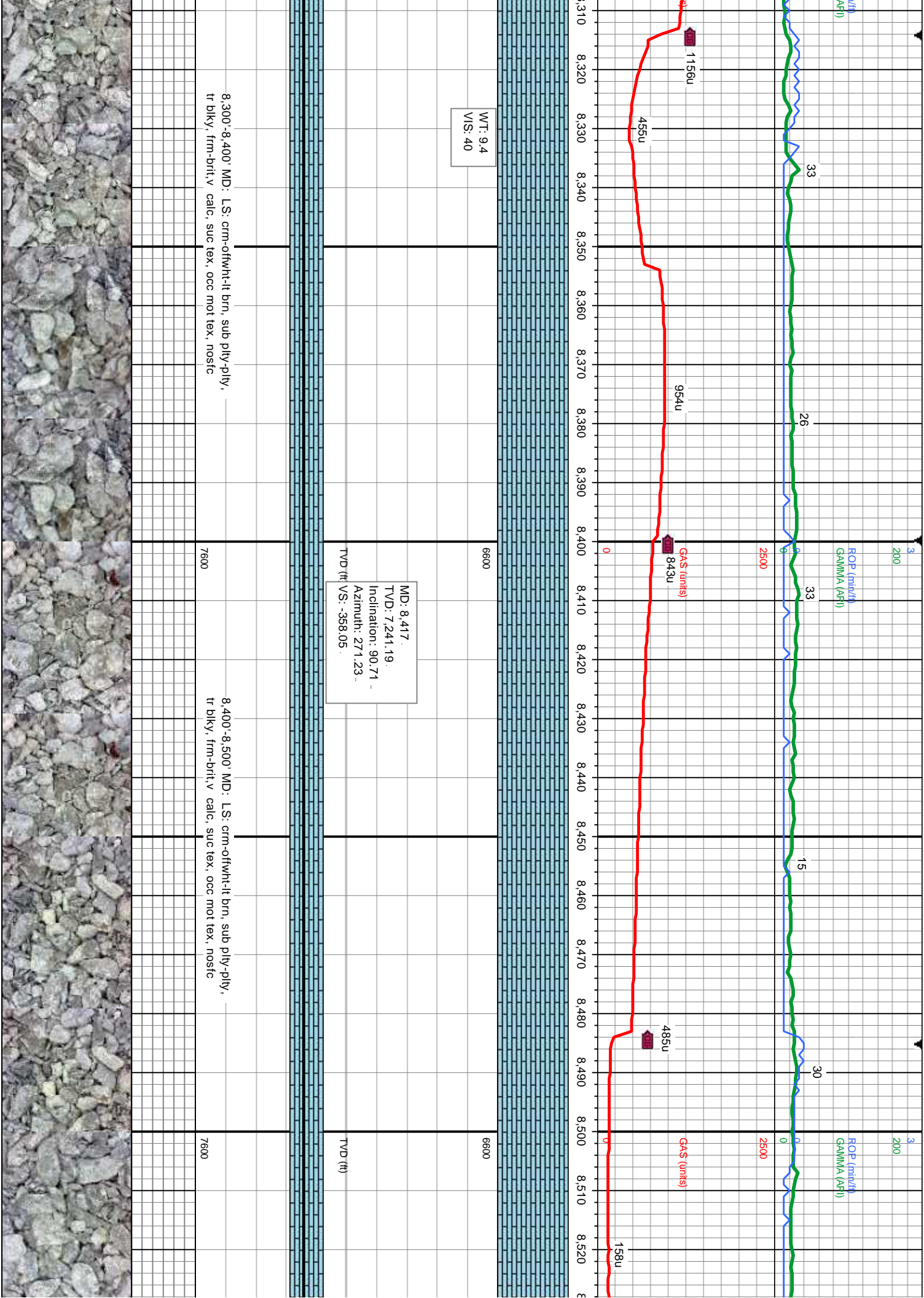
7750'-7800' MD: MRLST: med-dk gy-gy brn, sb pily-sb blkly, mod sft-frm, sb arg-sily, calc, tr bent, LS: crm-offwh/lt brn, sub pily-pily, tr blkly, frm-brlt v calc, suc tex, tr mot tex, sl tr lt blu/yel flor w/ slw halo cut

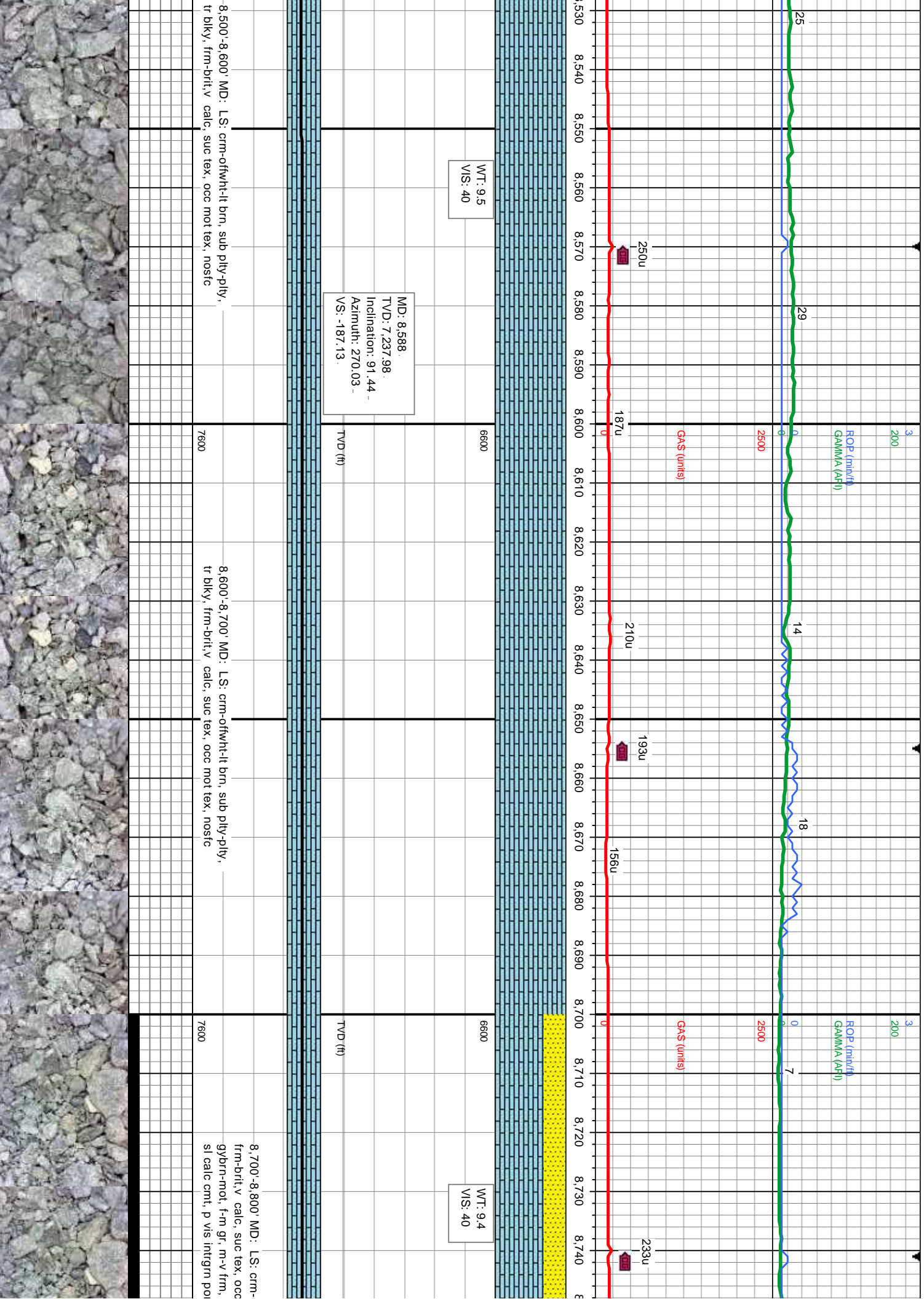
7800'-7850' MD: LS: crm-offwh/lt brn, sub pily-pily, tr blkly, frm-brlt v calc, suc tex, tr mot tex, MRLST: med-dk gy-gy brn, sb pily-sb blkly, zmod sft-frm, m-v arg, sl sily lp, calc

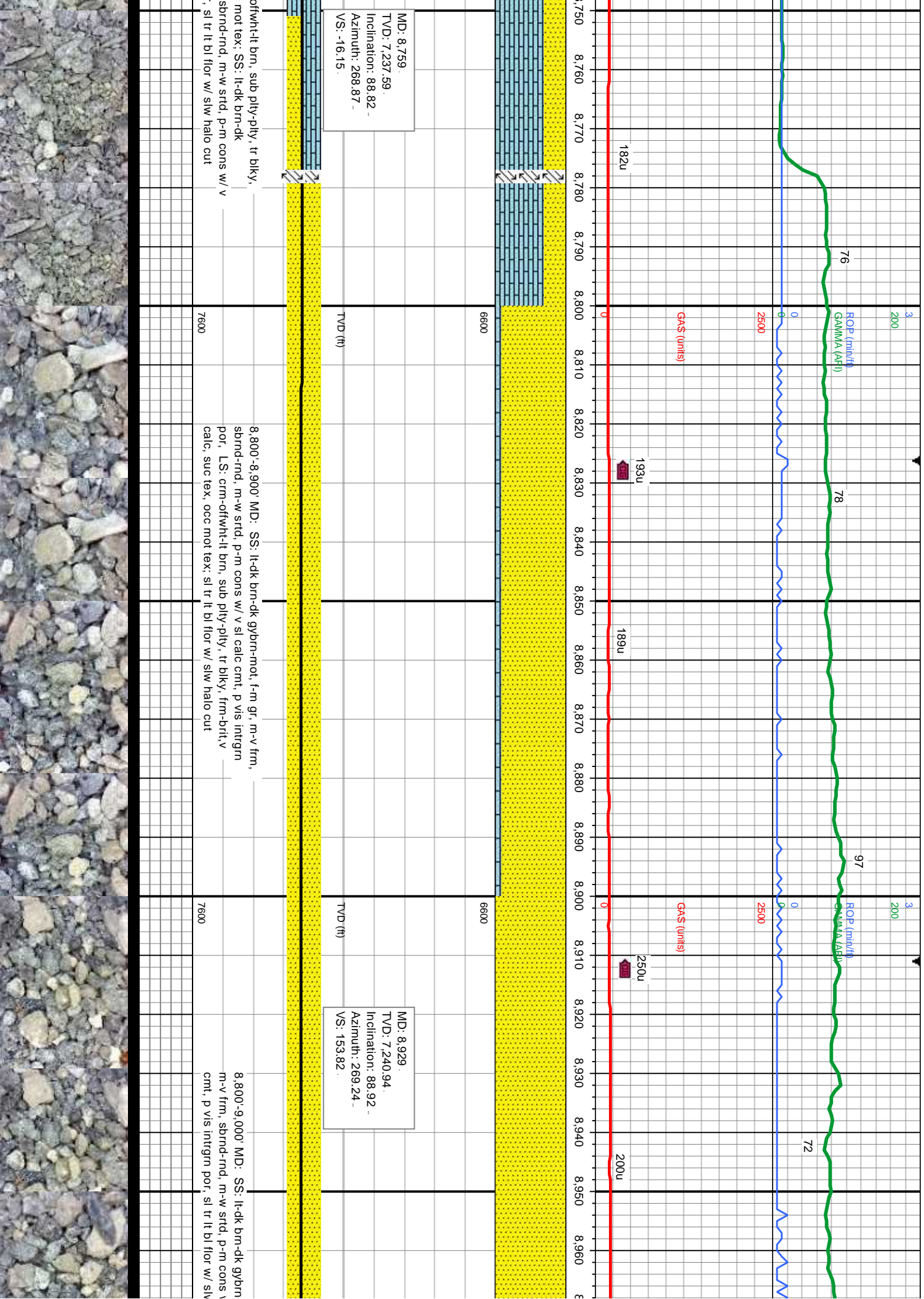
7850'-7900' MD: pily-pily, tr blkly, fr mod sft-frm, m-v a

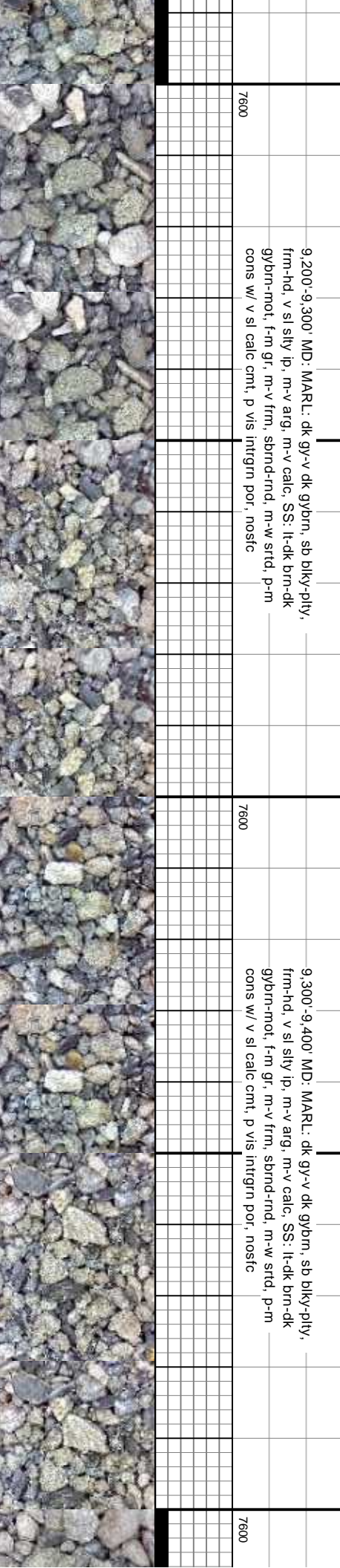
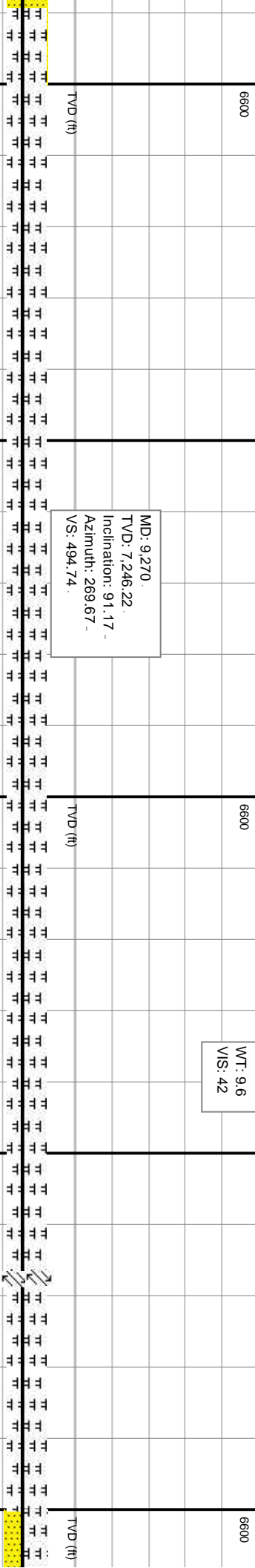
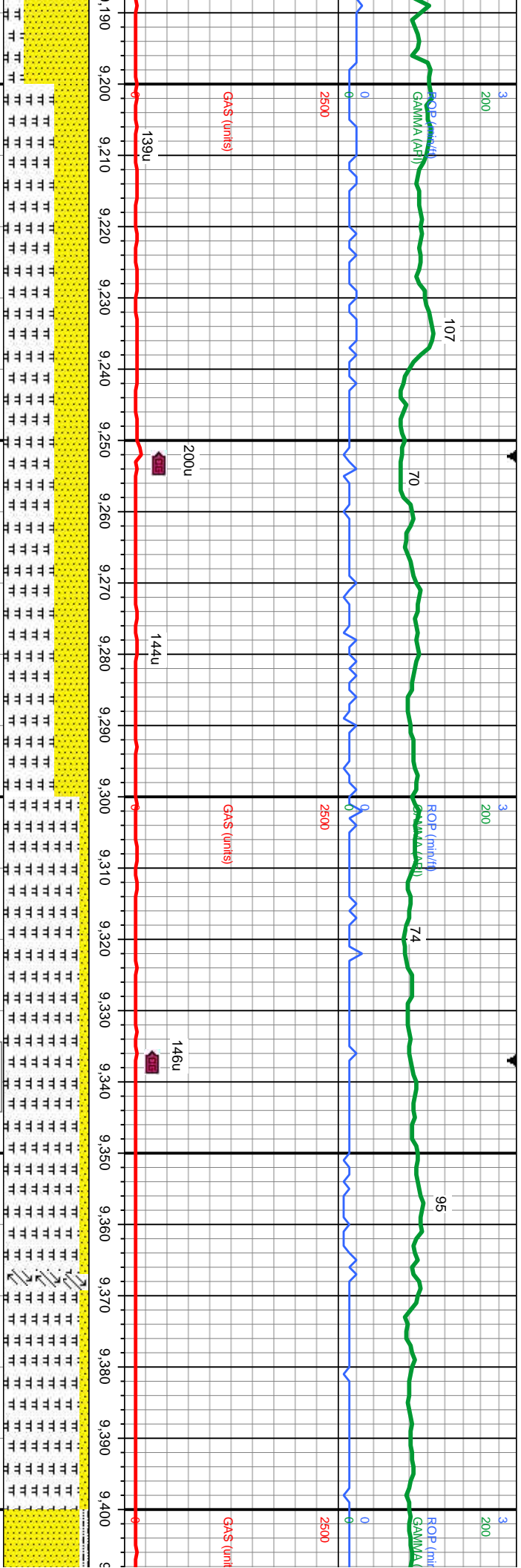


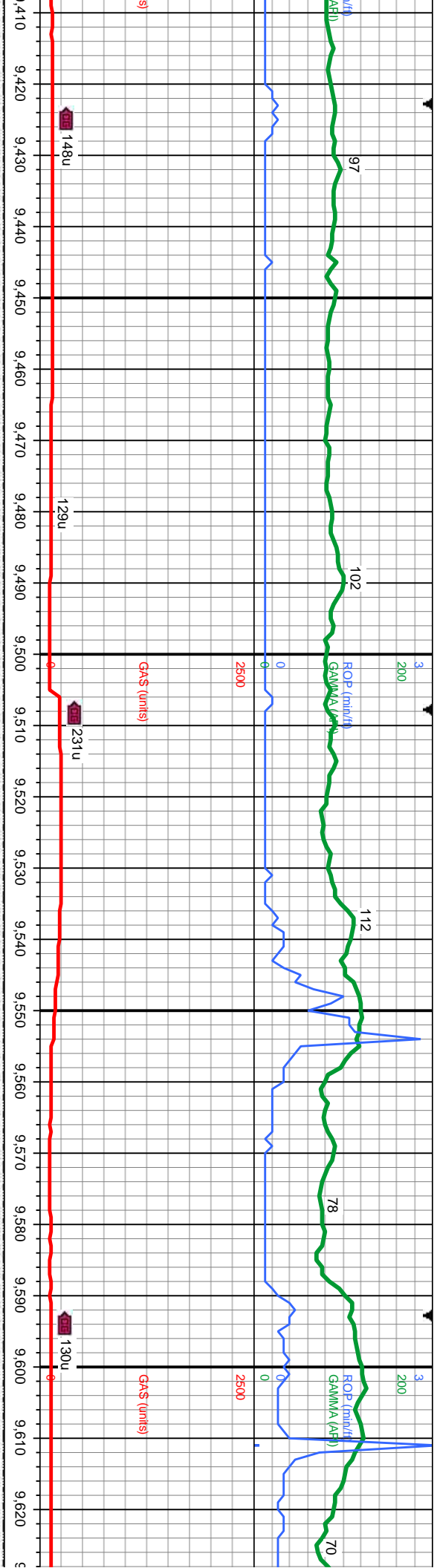












MD: 9,440.
TVD: 7,242.52.
Inclination: 91.32 -
Azimuth: 270.15 -
VS: 664.69

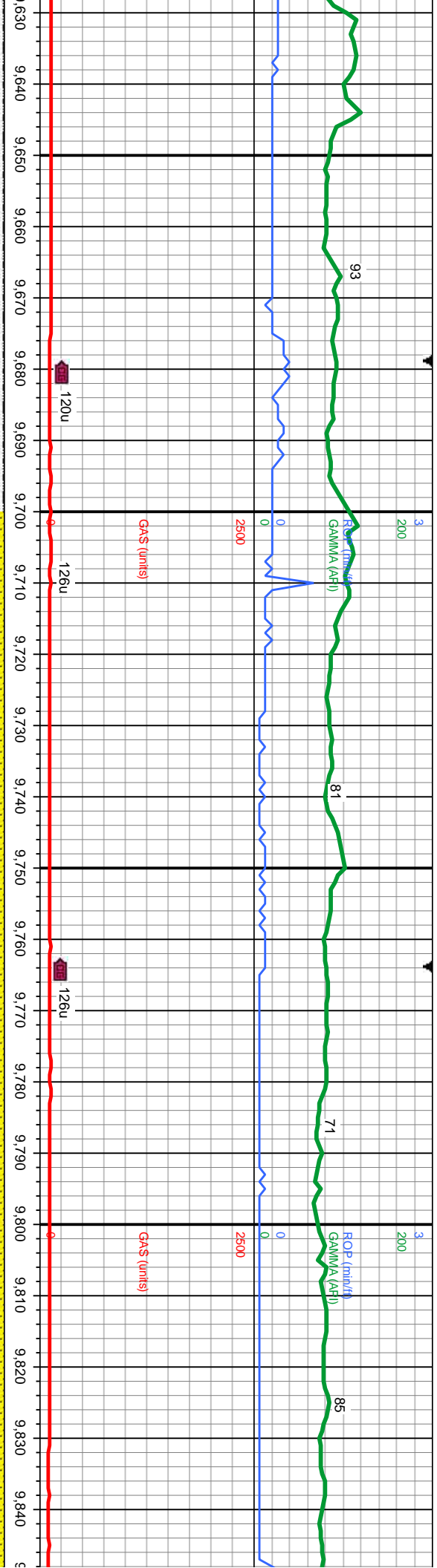
WT: 9.7
VIS: 43

MD: 9,611.
TVD: 7,239.09.
Inclination: 90.98 -
Azimuth: 270.48 -
VS: 835.63.

9,400'-9,500' MD: SS: lt-dk brn-dk gy brn-mot, f-med gr, mod-v frm, sbnd-rnd, mod-w strd, p-mod cons w/ v sl calc cnt; SLTY SH: med gy, occ dk gy, sft - frm, sbblky - sbply/plty, med-v slty, gt tx, v sl calc

9,500'-9,600' MD: SS: lt-dk brn-dk gy brn-mot, f-med gr, mod-v frm, sbnd-rnd, mod-w strd, p-mod cons w/ v sl calc cnt; SLTY SH: med gy, occ dk gy, sft - frm, sbblky - sbply/plty, med-v slty, gt tx, tr ls

9,600'-9,700' MD: SS: lt-dk brn-dk gy brn-mot, f-med gr, mod-v frm, sbnd-rnd, mod-w strd, p-mod cons w/ v sl calc cnt; SLTY SH: med gy, occ dk gy, sft - frm, sbblky - sbply/plty, med-v slty, gt tx, tr ls



WT: 9.6
VIS: 42

6600
TVD (ft)

MD: 9,783.
TVD: 7,233.58.
Inclination: 92.69 -
Azimuth: 267.9 -
VS: 1,007.52.

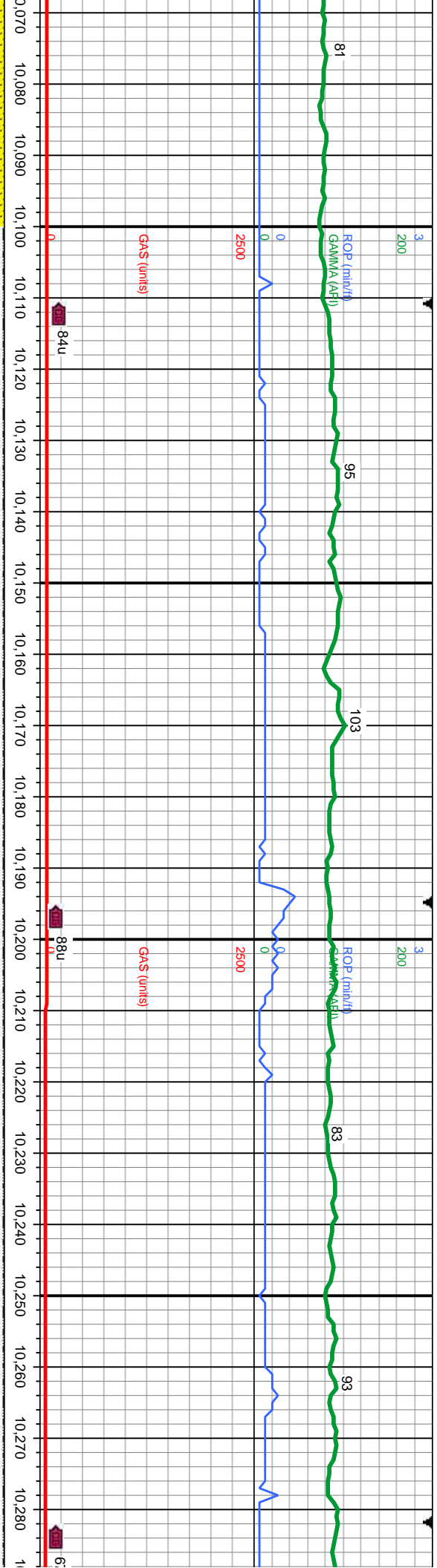
6600
TVD (ft)

MD: SS: lt-dk brn-dk gy brn-mot, f-med gr, mod-v frm, mod-w strd, p-mod cons w/ v sl calc cnt; SLTY SH: lt gy, sft - frm, sbblky - sbply/plty, med-v slty, gf tx, tr ls

9,700'-9,800' MD: SS: lt-dk brn-dk gy brn-mot, f-med gr, mod-v frm, sbnd-nd, mod-w strd, p-mod cons w/ v sl calc cnt; LS: crm-offwhlt brn, sub ply-plty, tr blk, frm-brlt, v calc, suc tex, occ mot tex, occ sh

9,800'-9,900' MD: SS: f-med gr, mod-v frm, p-mod cons w/ v sl c

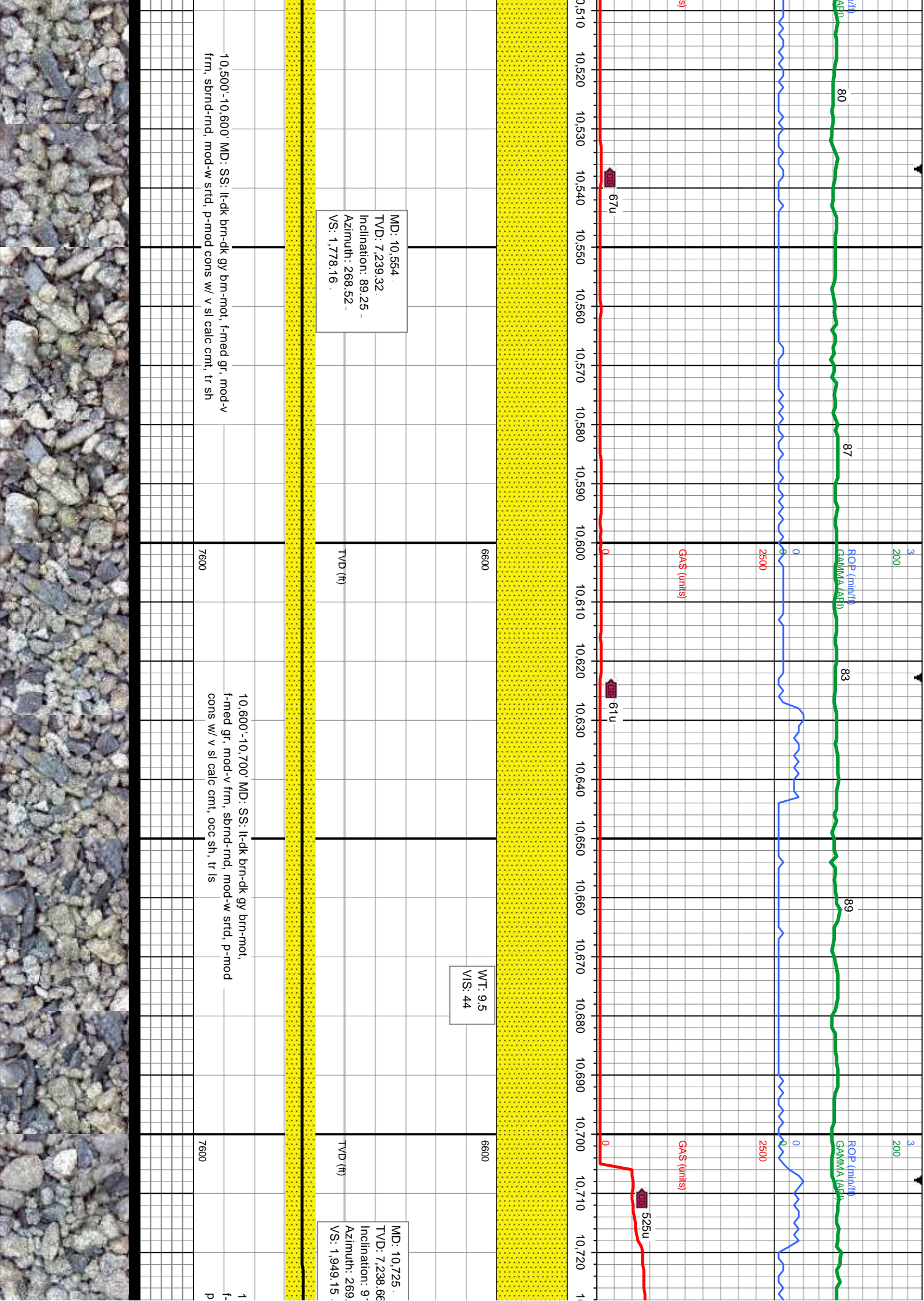


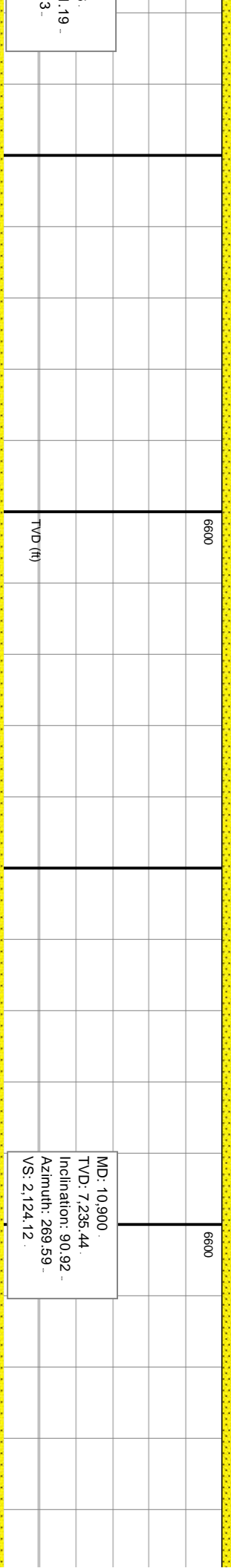
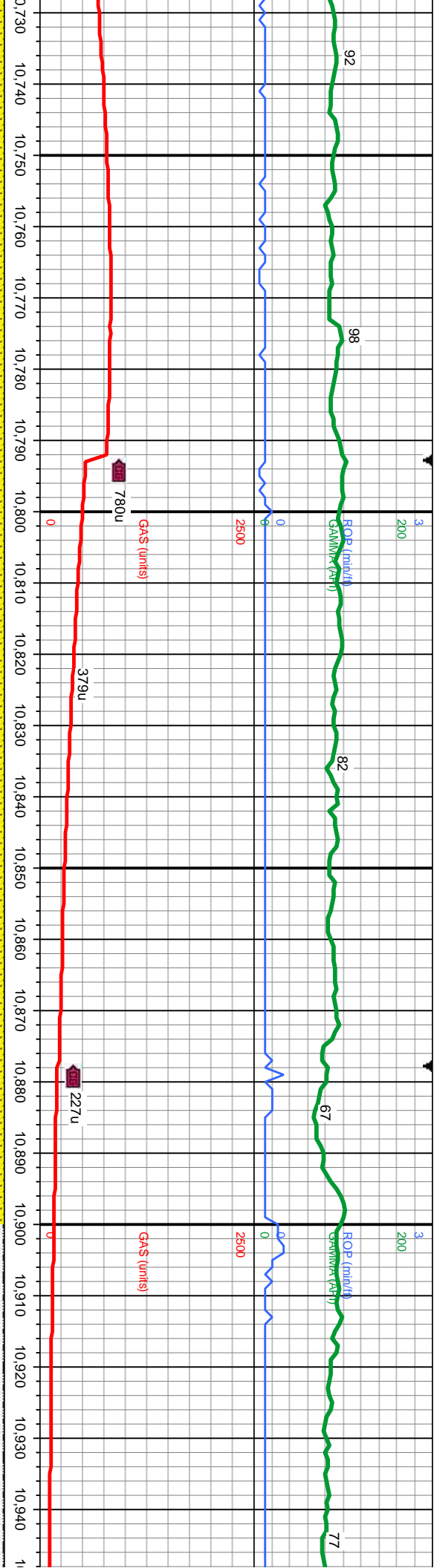


6600	WT: 9.5 VIS: 42	6600
TVD (ft)	MD: 10,128. TVD: 7,232.2 Inclination: 89.4 - Azimuth: 267.59 - VS: 1,362.37 -	TVD (ft)

7600	10,100'-10,200' MD: SS: lt-dk brn-dk gy brn-mot, f-med gr, mod-v frm, sbnd-rnd, mod-w strd, p-mod cons w/ v sl calc cnt; SLTY SH: lt-med gy, sft - frm, sbdky - sbply/plty, med-v slty, gt tx, tr ls	7600
7600	10,200'-10,300' MD: SS: lt-dk brn-dk gy brn-mot, f-med gr, mod-v frm, sbnd-rnd, mod-w strd, p-mod cons w/ v sl calc cnt; SLTY SH: lt-med gy, sft - frm, sbdky - sbply/plty, med-v slty, gt tx, tr ls	7600







1,19 -
3.

TVD (ft)

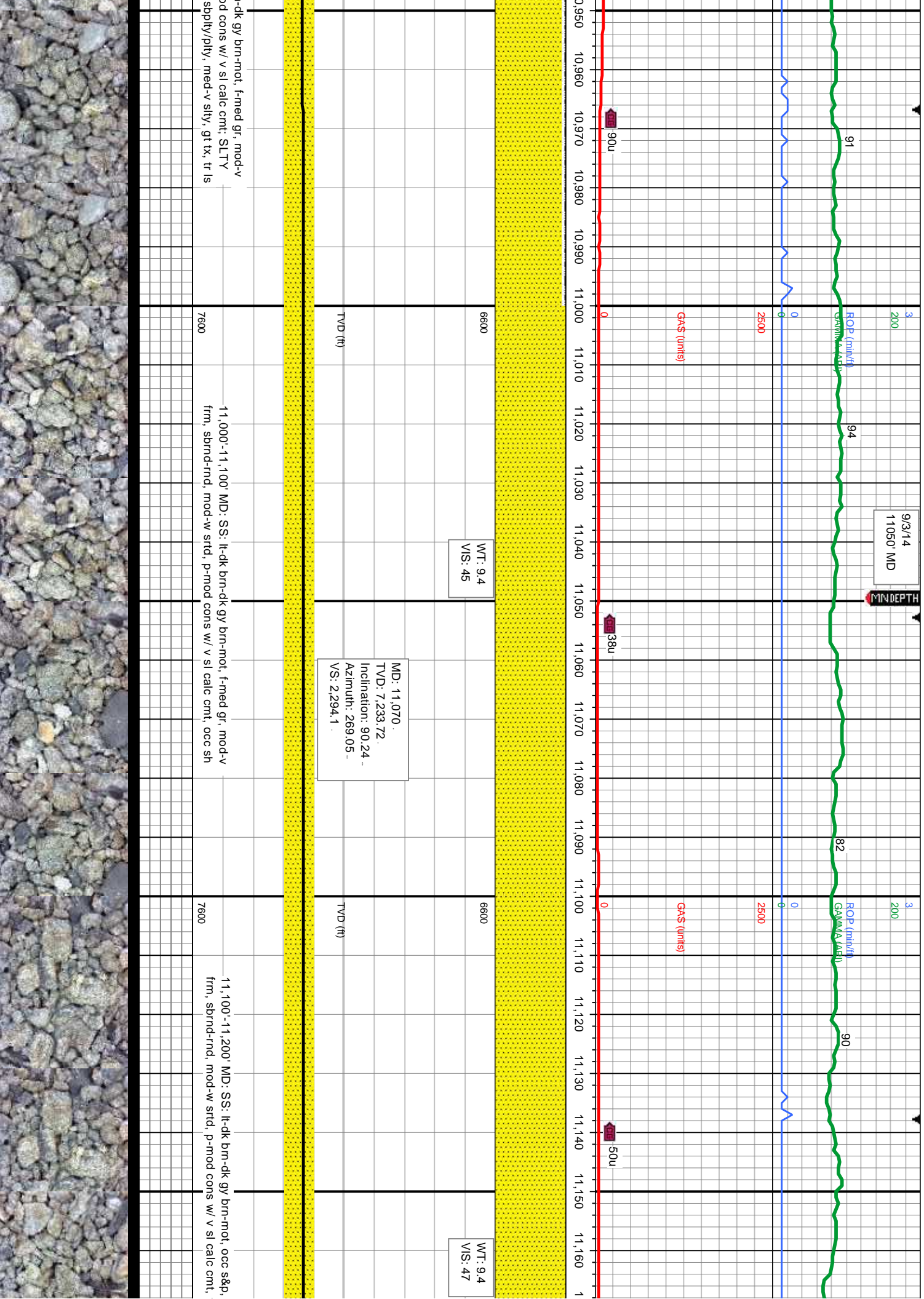
MD: 10,900.
TVD: 7,235.44.
Inclination: 90.92 -
Azimuth: 269.59 -
VS: 2,124.12

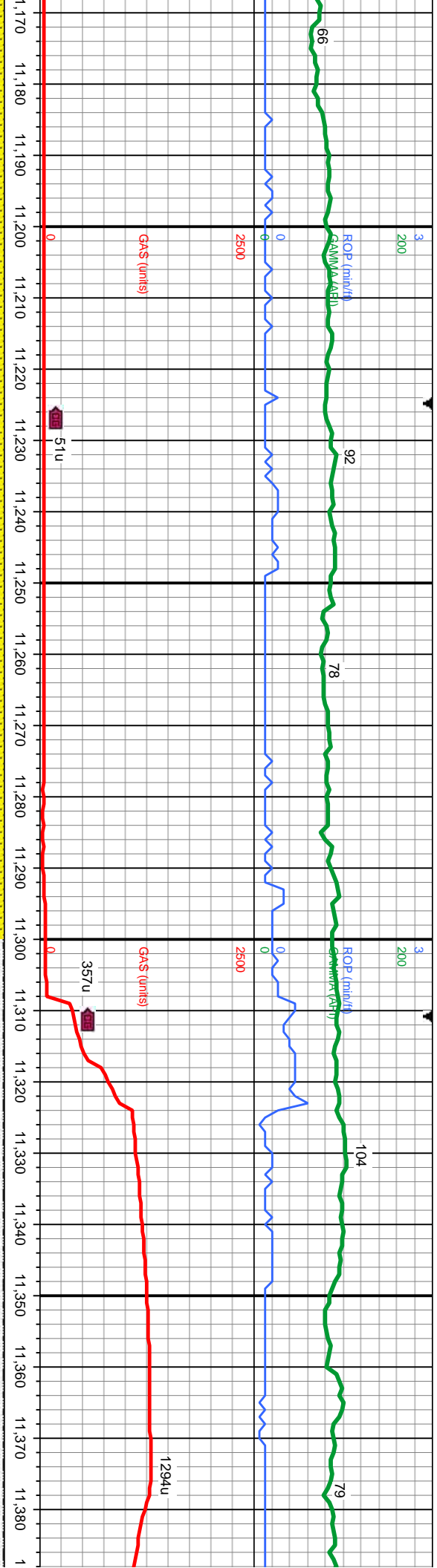
0,700'-10,800' MD: SS: lt-dk brn-dk gy brn-mot, med gr, mod-v frm, sbnd-rnd, mod-w strd, p-mod cons w/ v sl calc cnt, occ sh

10,800'-10,900 MD: SS: lt-dk brn-dk gy brn-mot, f-med gr, mod-v frm, sbnd-rnd, mod-w strd, p-mod cons w/ v sl calc cnt, occ sh

10,900'-11,000' MD: SS: lt-dk brn frm, sbnd-rnd, mod-w strd, p-m SH: lt-med gy, sft - frm, sbblky -



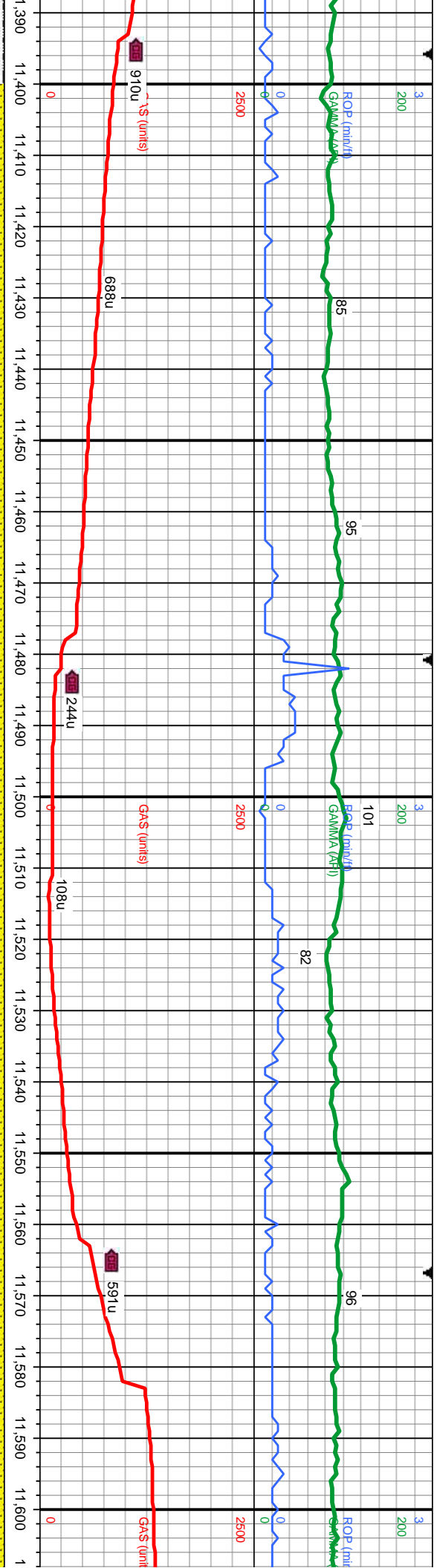




6600	MD: 11,243. TVD: 7,234.89. Inclination: 88.98 - Azimuth: 267.84 - VS: 2,467.07.	6600	WT: 9.4 VIS: 47
TVD (ft)		TVD (ft)	

f-med gr, mod-v tr glau, occ sh	7600	11,200'-11,300' MD: SS: lt-dk brn-dk gy brn-mot, occ s&tan/off wht, f-med gr, mod-v frm, sbnd-rnd, mod-w strd, p-mod cons w/ v sl calc cntl, occ sh	7600	11,300'-11,400' MD: SS: lt-dk brn-dk gy brn-mot, occ tan/off wht, f-med gr, mod-v frm, sbnd-rnd, mod-w strd, p-mod cons w/ v sl calc cntl; SLTY SH: lt-med gy, sft - frm, sbblky - sbply/plty, med-v slty, gt tx	7600
------------------------------------	------	---	------	---	------





MD: 11,413.
TVD: 7,236.91.
Inclination: 89.66 -
Azimuth: 267.5 -
VS: 2,636.99 .

WT: 9.5
VIS: 45

TVD (ft)

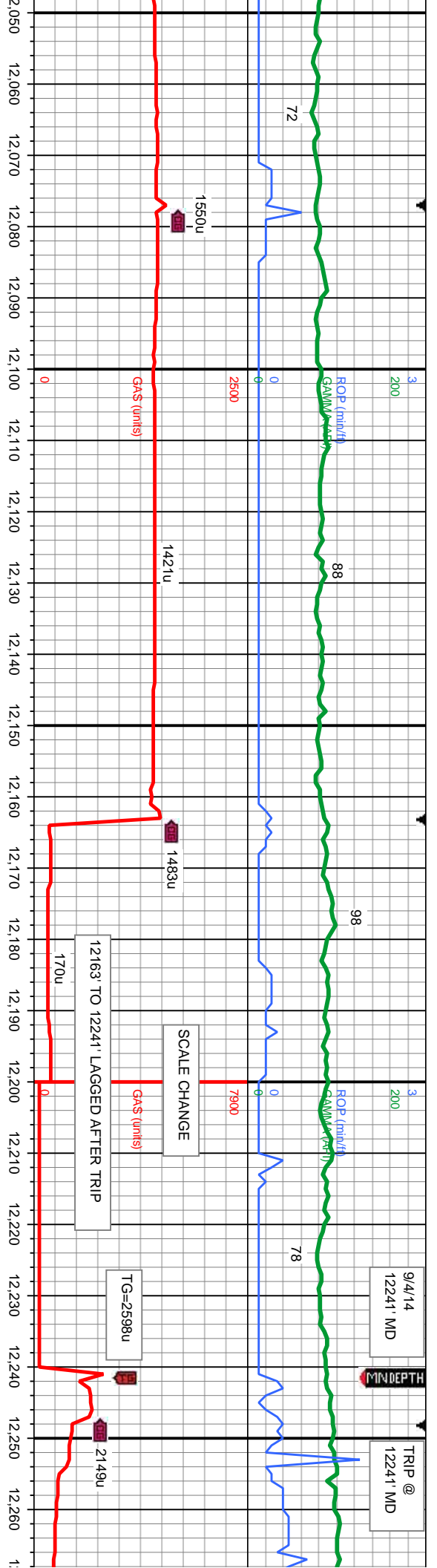
MD: 11,584.
TVD: 7,237.42.
Inclination: 90 -
Azimuth: 267.44 -
VS: 2,807.9

TVD (ft)

11,400'-11,500' MD: SS: lt-dk brn-dk gybrn-mot, f-m gr, m-v frm, sbnd-rnd, m-w strd, p-m cons w/ v sl calc cmt, p vis intrgrn por, sl tr lt bl flr w/ slw halo cut

11,500'-11,600' MD: SS: lt-dk brn-dk gybrn-mot, f-m gr, m-v frm, sbnd-rnd, m-w strd, p-m cons w/ v sl calc cmt, p vis intrgrn por, sl tr lt bl flr w/ slw halo cut





WT: 9.5
S: 43

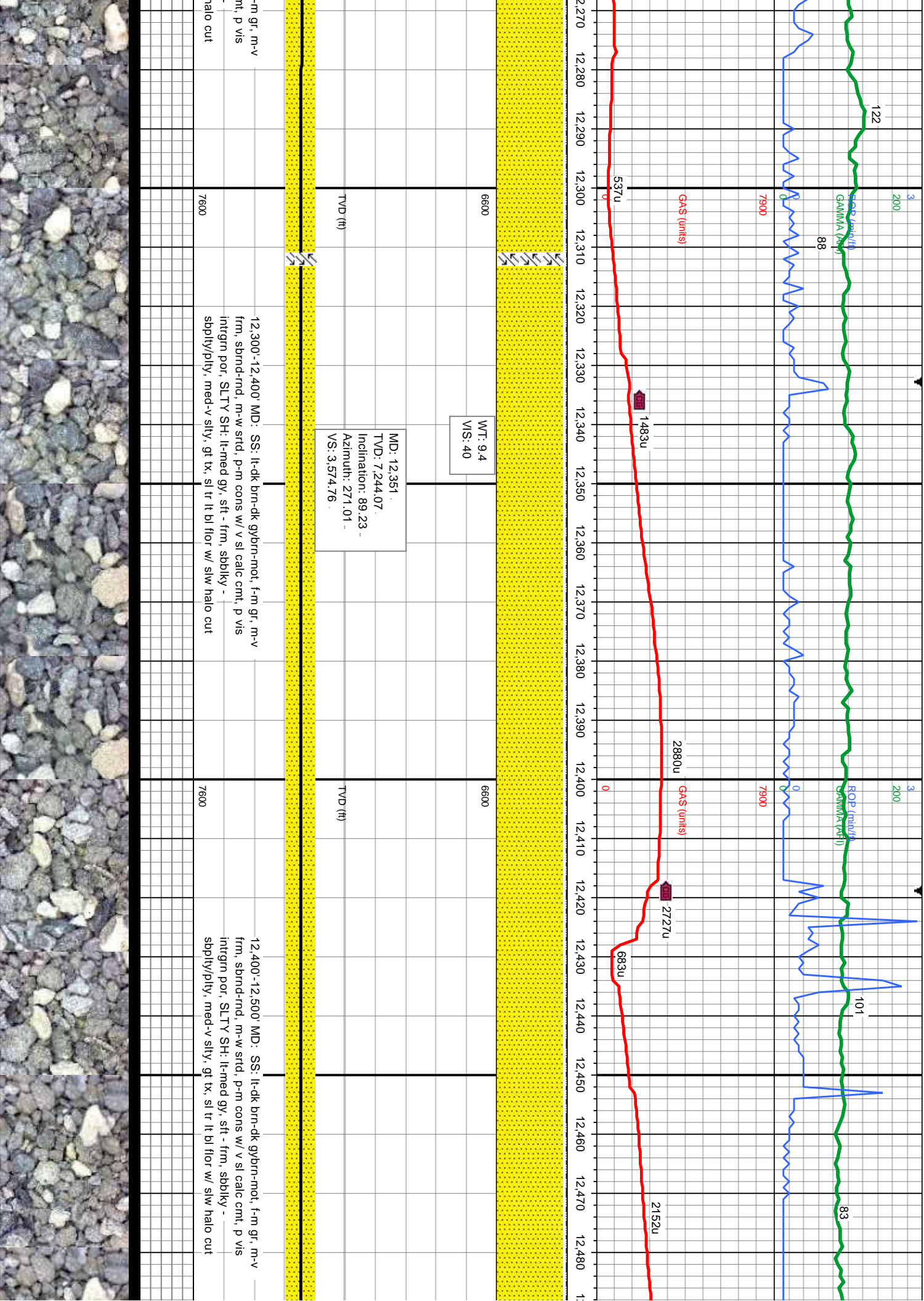
MD: 12,095.
TVD: 7,238.73.
Inclination: 89.29 -
Azimuth: 269.3 -
VS: 3,318.85.
(ft)

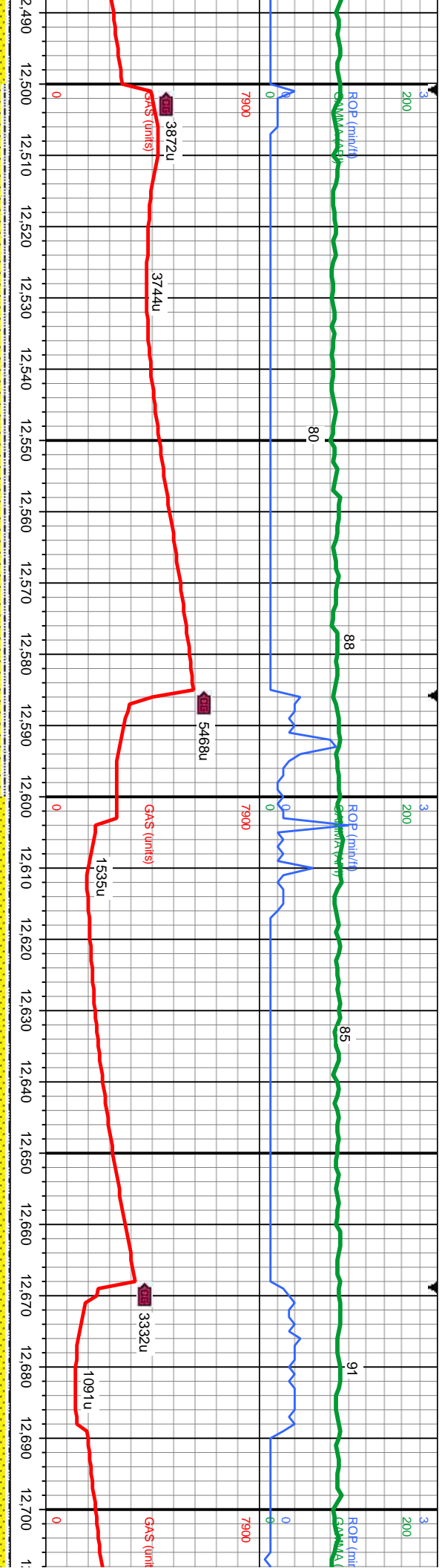
MD: 12,180.
TVD: 7,240.48.
Inclination: 88.36 -
Azimuth: 269.31 -
VS: 3,403.83.

WT: 9.4
VS: 40

dk brn-dk gybrn-mot, f-n gr, ttd, p-n cons w/ v sl calc
lt bl flr w/ slw halo cut
12,100'-12,200' MD: SS: lt-dk brn-dk gybrn-mot, f-n gr, m-v frm, sbnd-nd, m-w strd, p-n cons w/ v sl calc cmt, p vis intrgrn por, sl tr lt bl flr w/ slw halo cut
12,200'-12,300' MD: SS: lt-dk brn-dk gybrn-mot, f frm, sbnd-nd, m-w strd, p-n cons w/ v sl calc cr intrgrn por, SLTY SH: lt-med gy, stf - frm, sbbkly sppty/plty, med-v slty, gt tx, sl tr lt bl flr w/ slw l



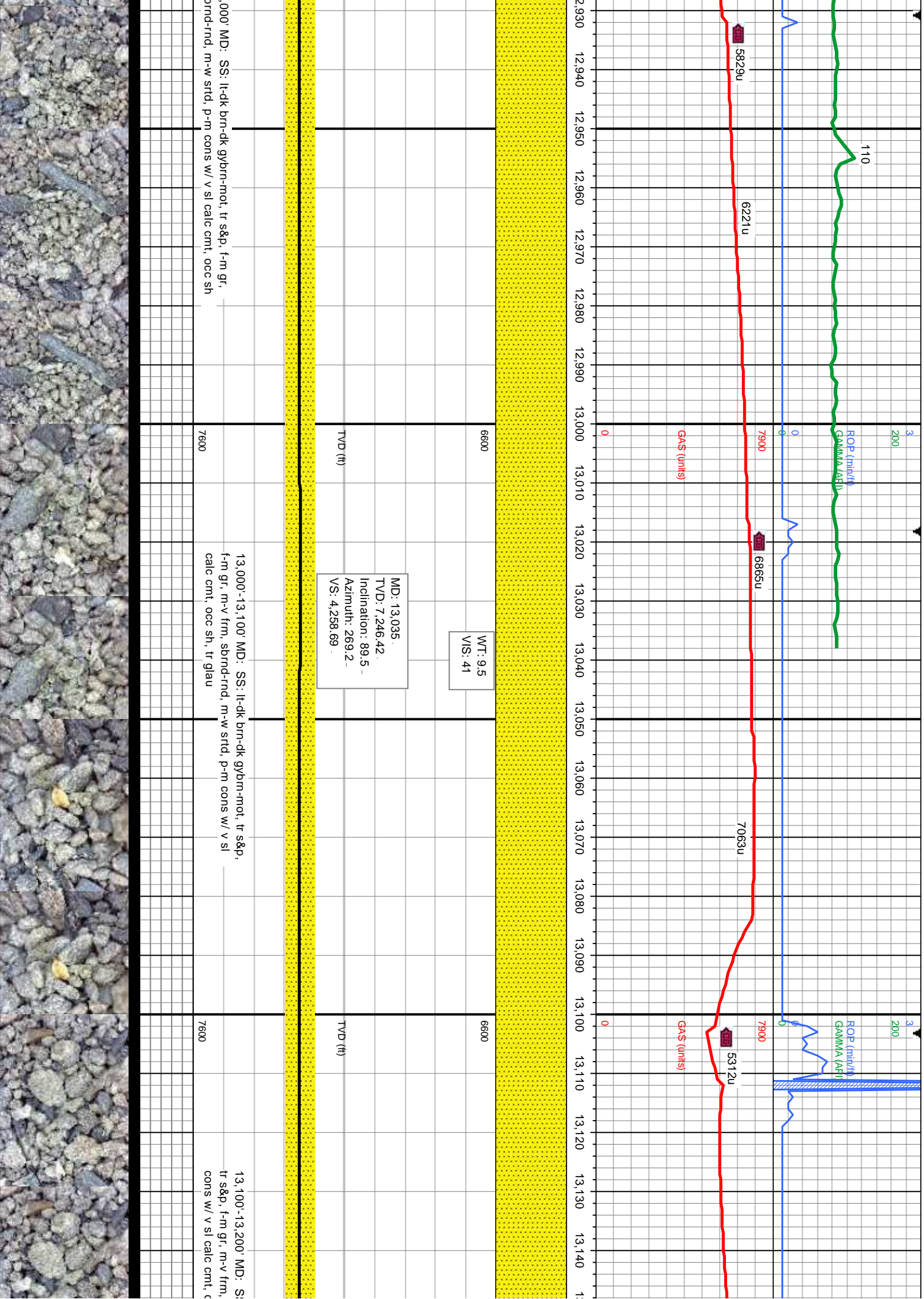


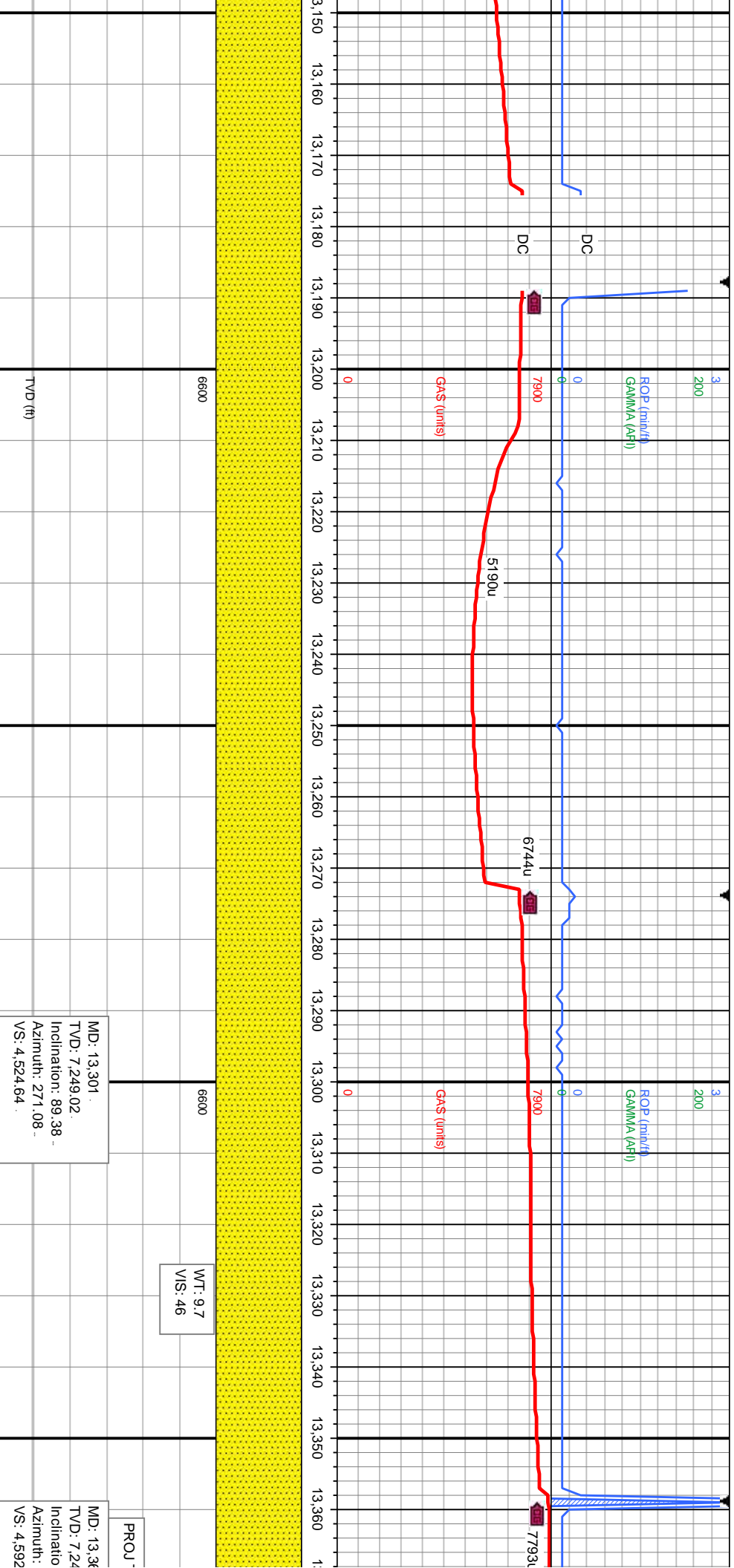


6600	MD: 12,522. TVD: 7,246.94 Inclination: 88.85 Azimuth: 268.87 VS: 3,745.72.	6600	MD: 12,607. TVD: 7,247.95 Inclination: 89.78 Azimuth: 269.1 VS: 3,830.71.	6600
TVD (ft)				TVD (ft)

12,500'-12,600' MD: SS: lt-dk brn-dk gybrn-mot, f-m gr, m-v frm, sbnd-ird, m-w strd, p-m cons w/ v sl calc cntl, p vis intgrn por, SLTY SH: lt-med gy, sft - frm, sbdkly - sbply/plty, med-v slty, gt tx, sl tr lt bl flr w/ slw halo cut	7600	12,600'-12,700' MD: SS: lt-dk brn-dk gybrn-mot, f-m gr, m-v frm, sbnd-ird, m-w strd, p-m cons w/ v sl calc cntl, p vis intgrn por, SLTY SH: lt-med gy, sft - frm, sbdkly - sbply/plty, med-v slty, gt tx, sl tr lt bl flr w/ slw halo cut	7600
---	------	---	------







MD: 13,301
TVD: 7,249.02
Inclination: 89.38
Azimuth: 271.08
VS: 4,524.64

WT: 9.7
VIS: 46

PROJ

MD: 13,301
TVD: 7,249.02
Inclination: 89.38
Azimuth: 271.08
VS: 4,592

13,150'-13,200' MD: SS: lt-dk brn-dk gybrn-mot, sbnd-nd, m-w strd, p-m occ sh

13,200'-13,300' MD: SS: lt-dk brn-dk gybrn-mot, tr s&p, f-m gr, m-v frm, sbnd-nd, m-w strd, p-m cons w/ v sl calc cntl, occ sh

13,300'-13,369 MD: SS: lt-dk brn-dk gybrn-mot, tr s&p, f-m gr, m-v frm, sbnd-nd, m-w strd, p-m cons w/ v sl calc cntl, occ sh



