

# Synergy Resources

Well Name: **SRC Cannon 14-16CHZ**

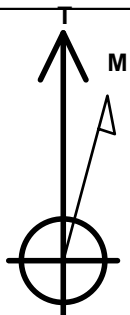
Surface Location: SRC Cannon Pad Sec.16-T4N-R68W  
North American Datum 1983 , US State Plane 1983 , Colorado Northern Zone  
Ground Elevation: 4929.0

+N/-S	+E/-W	Northing	Easting	Latitude	Longitude	Slot
0.0	0.0	1355778.99	3139483.89	40.308934	-104.999848	

Original Well Elev WELL @ 4942.0ft (Original Well Elev)

## WELLBORE TARGET DETAILS

Name	TVD	+N/-S	+E/-W	Shape
SHL 1016'FSL & 280'FEL	1.0	0.0	0.0	Point
BHL 188'FSL & 475'FWL	6360.0	-871.3	-4537.0	Point



Azimuths to True North  
Magnetic North: 8.54°

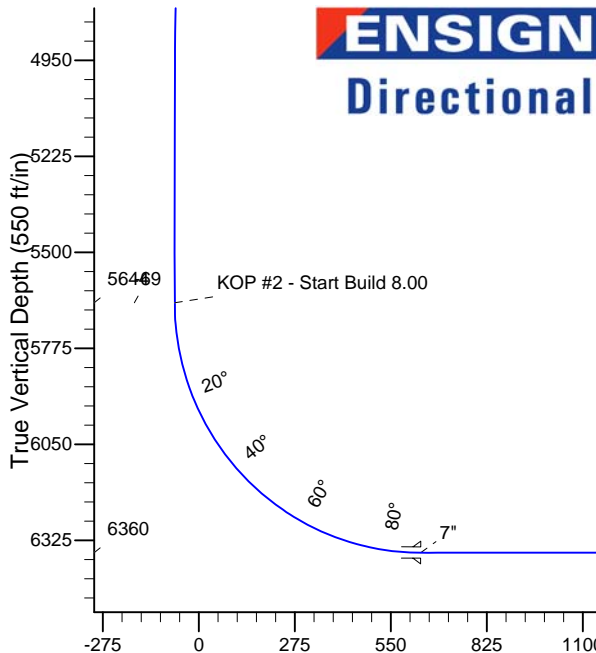
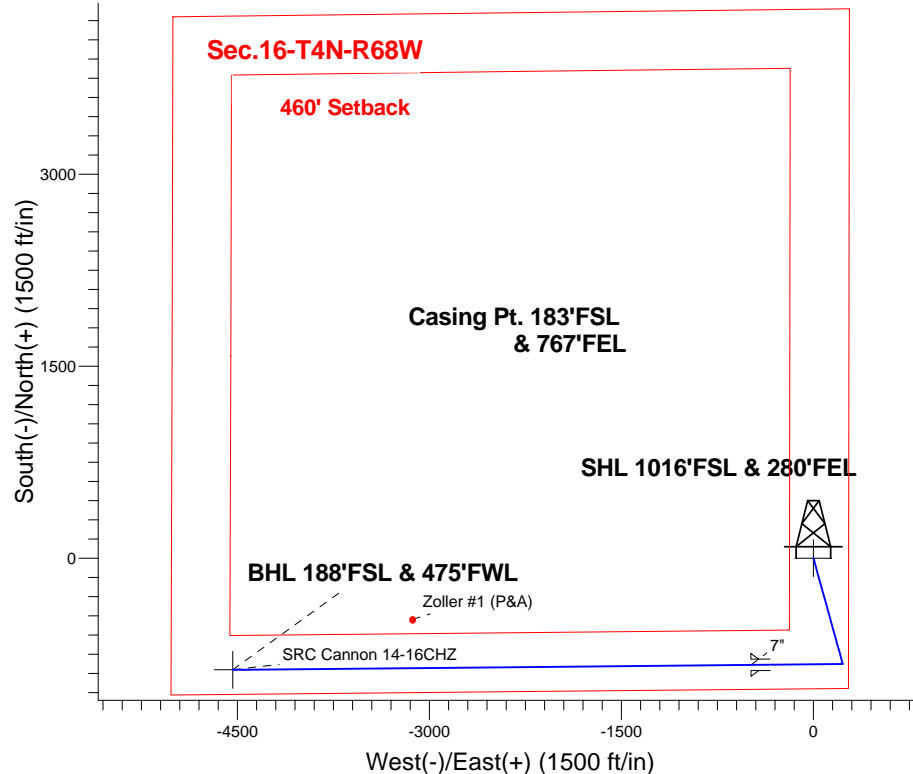
Magnetic Field  
Strength: 52713.4nT  
Dip Angle: 66.83°  
Date: 9/22/2014  
Model: IGRF2010

SRC Cannon Pad Sec.16-T4N-R68W  
SRC Cannon 14-16CHZ  
Plan #1 (10-20-14)  
11:05, October 21 2014

## ANNOTATIONS

TVD	MD	Annotation
400.0	400.0	KOP - Start Build 2.00
4630.4	4708.8	Start Drop -2.00
5643.8	5726.0	KOP #2 - Start Build 8.00
6360.0	10900.9	TD at 10900.9

South(-)/North(+) (1500 ft/in)



## SECTION DETAILS

Sec	MD	Inc	Azi	TVD	+N/-S	+E/-W	DLeg	TFace	VSec	Target
1	0.0	0.00	0.00	0.0	0.0	0.0	0.00	0.00	0.0	
2	400.0	0.00	0.00	400.0	0.0	0.0	0.00	0.00	0.0	
3	973.4	11.47	164.51	969.6	-55.1	15.3	2.00	164.51	-4.6	
4	4708.8	11.47	164.51	4630.4	-770.8	213.6	0.00	0.00	-64.4	
5	5282.2	0.00	0.00	5200.0	-825.9	228.9	2.00	180.00	-69.0	
6	5726.0	0.00	0.00	5643.8	-825.9	228.9	0.00	0.00	-69.0	
7	6851.0	90.00	269.45	6360.0	-832.7	-487.3	8.00	269.45	635.6	
8	10900.9	90.00	269.45	6360.0	-871.3	-4537.0	0.00	0.00	4619.9	BHL 188'FSL & 475'FWL

BHL 188'FSL & 475'FWL

TD at 10900.9



## **Synergy Resources**

**SEC.16-T4N-R68W**

**SRC Cannon Pad Sec.16-T4N-R68W**

**SRC Cannon 14-16CHZ**

**Wellbore #1**

**Plan: Plan #1 (10-20-14)**

## **Standard Planning Report**

**21 October, 2014**

Plan Sections										
Measured Depth (ft)	Inclination (°)	Azimuth (°)	Vertical Depth (ft)	+N/-S (ft)	+E/-W (ft)	Dogleg Rate (°/100ft)	Build Rate (°/100ft)	Turn Rate (°/100ft)	TFO (°)	Target
0.0	0.00	0.00	0.0	0.0	0.0	0.00	0.00	0.00	0.00	
400.0	0.00	0.00	400.0	0.0	0.0	0.00	0.00	0.00	0.00	
973.4	11.47	164.51	969.6	-55.1	15.3	2.00	2.00	0.00	164.51	
4,708.8	11.47	164.51	4,630.4	-770.8	213.6	0.00	0.00	0.00	0.00	
5,282.2	0.00	0.00	5,200.0	-825.9	228.9	2.00	-2.00	0.00	180.00	
5,726.0	0.00	0.00	5,643.8	-825.9	228.9	0.00	0.00	0.00	0.00	
6,851.0	90.00	269.45	6,360.0	-832.7	-487.3	8.00	8.00	0.00	269.45	
10,900.9	90.00	269.45	6,360.0	-871.3	-4,537.0	0.00	0.00	0.00	0.00	BHL 188°FSL & 475°

<b>Database:</b>	Landmark	<b>Local Co-ordinate Reference:</b>	Well SRC Cannon 14-16CHZ
<b>Company:</b>	Synergy Resources	<b>TVD Reference:</b>	WELL @ 4942.0ft (Original Well Elev)
<b>Project:</b>	SEC.16-T4N-R68W	<b>MD Reference:</b>	WELL @ 4942.0ft (Original Well Elev)
<b>Site:</b>	SRC Cannon Pad Sec.16-T4N-R68W	<b>North Reference:</b>	True
<b>Well:</b>	SRC Cannon 14-16CHZ	<b>Survey Calculation Method:</b>	Minimum Curvature
<b>Wellbore:</b>	Wellbore #1		
<b>Design:</b>	Plan #1 (10-20-14)		

Planned Survey									
Measured Depth (ft)	Inclination (°)	Azimuth (°)	Vertical Depth (ft)	+N/-S (ft)	+E/-W (ft)	Vertical Section (ft)	Dogleg Rate (°/100ft)	Build Rate (°/100ft)	Turn Rate (°/100ft)
0.0	0.00	0.00	0.0	0.0	0.0	0.0	0.00	0.00	0.00
100.0	0.00	0.00	100.0	0.0	0.0	0.0	0.00	0.00	0.00
200.0	0.00	0.00	200.0	0.0	0.0	0.0	0.00	0.00	0.00
300.0	0.00	0.00	300.0	0.0	0.0	0.0	0.00	0.00	0.00
400.0	0.00	0.00	400.0	0.0	0.0	0.0	0.00	0.00	0.00
KOP - Start Build 2.00									
500.0	2.00	164.51	500.0	-1.7	0.5	-0.1	2.00	2.00	0.00
600.0	4.00	164.51	599.8	-6.7	1.9	-0.6	2.00	2.00	0.00
700.0	6.00	164.51	699.5	-15.1	4.2	-1.3	2.00	2.00	0.00
800.0	8.00	164.51	798.7	-26.9	7.4	-2.2	2.00	2.00	0.00
900.0	10.00	164.51	897.5	-41.9	11.6	-3.5	2.00	2.00	0.00
973.4	11.47	164.51	969.6	-55.1	15.3	-4.6	2.00	2.00	0.00
1,000.0	11.47	164.51	995.6	-60.2	16.7	-5.0	0.00	0.00	0.00
1,100.0	11.47	164.51	1,093.7	-79.4	22.0	-6.6	0.00	0.00	0.00
1,200.0	11.47	164.51	1,191.7	-98.5	27.3	-8.2	0.00	0.00	0.00
1,300.0	11.47	164.51	1,289.7	-117.7	32.6	-9.8	0.00	0.00	0.00
1,400.0	11.47	164.51	1,387.7	-136.8	37.9	-11.4	0.00	0.00	0.00
1,500.0	11.47	164.51	1,485.7	-156.0	43.2	-13.0	0.00	0.00	0.00
1,600.0	11.47	164.51	1,583.7	-175.2	48.5	-14.6	0.00	0.00	0.00
1,700.0	11.47	164.51	1,681.7	-194.3	53.9	-16.2	0.00	0.00	0.00
1,800.0	11.47	164.51	1,779.7	-213.5	59.2	-17.8	0.00	0.00	0.00
1,900.0	11.47	164.51	1,877.7	-232.6	64.5	-19.4	0.00	0.00	0.00
2,000.0	11.47	164.51	1,975.7	-251.8	69.8	-21.0	0.00	0.00	0.00
2,100.0	11.47	164.51	2,073.7	-271.0	75.1	-22.6	0.00	0.00	0.00
2,200.0	11.47	164.51	2,171.7	-290.1	80.4	-24.2	0.00	0.00	0.00
2,300.0	11.47	164.51	2,269.7	-309.3	85.7	-25.8	0.00	0.00	0.00
2,400.0	11.47	164.51	2,367.7	-328.4	91.0	-27.4	0.00	0.00	0.00
2,500.0	11.47	164.51	2,465.7	-347.6	96.3	-29.0	0.00	0.00	0.00
2,600.0	11.47	164.51	2,563.7	-366.8	101.6	-30.7	0.00	0.00	0.00
2,700.0	11.47	164.51	2,661.7	-385.9	107.0	-32.3	0.00	0.00	0.00
2,800.0	11.47	164.51	2,759.7	-405.1	112.3	-33.9	0.00	0.00	0.00
2,900.0	11.47	164.51	2,857.7	-424.2	117.6	-35.5	0.00	0.00	0.00
3,000.0	11.47	164.51	2,955.7	-443.4	122.9	-37.1	0.00	0.00	0.00
3,100.0	11.47	164.51	3,053.7	-462.6	128.2	-38.7	0.00	0.00	0.00
3,200.0	11.47	164.51	3,151.7	-481.7	133.5	-40.3	0.00	0.00	0.00
3,300.0	11.47	164.51	3,249.7	-500.9	138.8	-41.9	0.00	0.00	0.00
3,400.0	11.47	164.51	3,347.7	-520.0	144.1	-43.5	0.00	0.00	0.00
3,500.0	11.47	164.51	3,445.7	-539.2	149.4	-45.1	0.00	0.00	0.00
3,600.0	11.47	164.51	3,543.7	-558.3	154.7	-46.7	0.00	0.00	0.00
3,700.0	11.47	164.51	3,641.7	-577.5	160.1	-48.3	0.00	0.00	0.00
3,800.0	11.47	164.51	3,739.8	-596.7	165.4	-49.9	0.00	0.00	0.00
3,900.0	11.47	164.51	3,837.8	-615.8	170.7	-51.5	0.00	0.00	0.00
4,000.0	11.47	164.51	3,935.8	-635.0	176.0	-53.1	0.00	0.00	0.00
4,100.0	11.47	164.51	4,033.8	-654.1	181.3	-54.7	0.00	0.00	0.00
4,200.0	11.47	164.51	4,131.8	-673.3	186.6	-56.3	0.00	0.00	0.00
4,300.0	11.47	164.51	4,229.8	-692.5	191.9	-57.9	0.00	0.00	0.00
4,400.0	11.47	164.51	4,327.8	-711.6	197.2	-59.5	0.00	0.00	0.00
4,500.0	11.47	164.51	4,425.8	-730.8	202.5	-61.1	0.00	0.00	0.00
4,600.0	11.47	164.51	4,523.8	-749.9	207.8	-62.7	0.00	0.00	0.00
4,700.0	11.47	164.51	4,621.8	-769.1	213.2	-64.3	0.00	0.00	0.00
4,708.8	11.47	164.51	4,630.4	-770.8	213.6	-64.4	0.00	0.00	0.00
Start Drop -2.00									
4,800.0	9.64	164.51	4,720.1	-786.9	218.1	-65.8	2.00	-2.00	0.00
4,900.0	7.64	164.51	4,818.9	-801.4	222.1	-67.0	2.00	-2.00	0.00

<b>Database:</b>	Landmark	<b>Local Co-ordinate Reference:</b>	Well SRC Cannon 14-16CHZ
<b>Company:</b>	Synergy Resources	<b>TVD Reference:</b>	WELL @ 4942.0ft (Original Well Elev)
<b>Project:</b>	SEC.16-T4N-R68W	<b>MD Reference:</b>	WELL @ 4942.0ft (Original Well Elev)
<b>Site:</b>	SRC Cannon Pad Sec.16-T4N-R68W	<b>North Reference:</b>	True
<b>Well:</b>	SRC Cannon 14-16CHZ	<b>Survey Calculation Method:</b>	Minimum Curvature
<b>Wellbore:</b>	Wellbore #1		
<b>Design:</b>	Plan #1 (10-20-14)		

Planned Survey									
Measured Depth (ft)	Inclination (°)	Azimuth (°)	Vertical Depth (ft)	+N/-S (ft)	+E/-W (ft)	Vertical Section (ft)	Dogleg Rate (°/100ft)	Build Rate (°/100ft)	Turn Rate (°/100ft)
5,000.0	5.64	164.51	4,918.2	-812.5	225.2	-67.9	2.00	-2.00	0.00
5,100.0	3.64	164.51	5,017.9	-820.3	227.4	-68.6	2.00	-2.00	0.00
5,200.0	1.64	164.51	5,117.8	-824.8	228.6	-68.9	2.00	-2.00	0.00
5,282.2	0.00	0.00	5,200.0	-825.9	228.9	-69.0	2.00	-2.00	0.00
5,300.0	0.00	0.00	5,217.8	-825.9	228.9	-69.0	0.00	0.00	0.00
5,400.0	0.00	0.00	5,317.8	-825.9	228.9	-69.0	0.00	0.00	0.00
5,500.0	0.00	0.00	5,417.8	-825.9	228.9	-69.0	0.00	0.00	0.00
5,600.0	0.00	0.00	5,517.8	-825.9	228.9	-69.0	0.00	0.00	0.00
5,700.0	0.00	0.00	5,617.8	-825.9	228.9	-69.0	0.00	0.00	0.00
5,726.0	0.00	0.00	5,643.8	-825.9	228.9	-69.0	0.00	0.00	0.00
<b>KOP #2 - Start Build 8.00</b>									
5,800.0	5.92	269.45	5,717.7	-825.9	225.1	-65.3	8.00	8.00	0.00
5,900.0	13.92	269.45	5,816.1	-826.1	207.9	-48.3	8.00	8.00	0.00
6,000.0	21.92	269.45	5,911.2	-826.4	177.1	-18.1	8.00	8.00	0.00
6,100.0	29.92	269.45	6,001.0	-826.8	133.5	24.9	8.00	8.00	0.00
6,200.0	37.92	269.45	6,083.9	-827.3	77.7	79.7	8.00	8.00	0.00
6,300.0	45.92	269.45	6,158.3	-828.0	11.0	145.4	8.00	8.00	0.00
6,400.0	53.92	269.45	6,222.6	-828.7	-65.5	220.6	8.00	8.00	0.00
6,500.0	61.92	269.45	6,275.7	-829.5	-150.2	303.9	8.00	8.00	0.00
6,600.0	69.92	269.45	6,316.5	-830.4	-241.4	393.7	8.00	8.00	0.00
6,700.0	77.92	269.45	6,344.1	-831.3	-337.4	488.1	8.00	8.00	0.00
6,800.0	85.92	269.45	6,358.2	-832.2	-436.3	585.4	8.00	8.00	0.00
6,851.0	90.00	269.45	6,360.0	-832.7	-487.3	635.6	8.00	8.00	0.00
<b>7"</b>									
6,900.0	90.00	269.45	6,360.0	-833.2	-536.3	683.8	0.00	0.00	0.00
7,000.0	90.00	269.45	6,360.0	-834.1	-636.2	782.2	0.00	0.00	0.00
7,100.0	90.00	269.45	6,360.0	-835.1	-736.2	880.5	0.00	0.00	0.00
7,200.0	90.00	269.45	6,360.0	-836.1	-836.2	978.9	0.00	0.00	0.00
7,300.0	90.00	269.45	6,360.0	-837.0	-936.2	1,077.3	0.00	0.00	0.00
7,400.0	90.00	269.45	6,360.0	-838.0	-1,036.2	1,175.7	0.00	0.00	0.00
7,500.0	90.00	269.45	6,360.0	-838.9	-1,136.2	1,274.1	0.00	0.00	0.00
7,600.0	90.00	269.45	6,360.0	-839.9	-1,236.2	1,372.4	0.00	0.00	0.00
7,700.0	90.00	269.45	6,360.0	-840.8	-1,336.2	1,470.8	0.00	0.00	0.00
7,800.0	90.00	269.45	6,360.0	-841.8	-1,436.2	1,569.2	0.00	0.00	0.00
7,900.0	90.00	269.45	6,360.0	-842.7	-1,536.2	1,667.6	0.00	0.00	0.00
8,000.0	90.00	269.45	6,360.0	-843.7	-1,636.2	1,766.0	0.00	0.00	0.00
8,100.0	90.00	269.45	6,360.0	-844.6	-1,736.2	1,864.3	0.00	0.00	0.00
8,200.0	90.00	269.45	6,360.0	-845.6	-1,836.2	1,962.7	0.00	0.00	0.00
8,300.0	90.00	269.45	6,360.0	-846.5	-1,936.2	2,061.1	0.00	0.00	0.00
8,400.0	90.00	269.45	6,360.0	-847.5	-2,036.2	2,159.5	0.00	0.00	0.00
8,500.0	90.00	269.45	6,360.0	-848.5	-2,136.2	2,257.9	0.00	0.00	0.00
8,600.0	90.00	269.45	6,360.0	-849.4	-2,236.2	2,356.2	0.00	0.00	0.00
8,700.0	90.00	269.45	6,360.0	-850.4	-2,336.2	2,454.6	0.00	0.00	0.00
8,800.0	90.00	269.45	6,360.0	-851.3	-2,436.2	2,553.0	0.00	0.00	0.00
8,900.0	90.00	269.45	6,360.0	-852.3	-2,536.2	2,651.4	0.00	0.00	0.00
9,000.0	90.00	269.45	6,360.0	-853.2	-2,636.2	2,749.8	0.00	0.00	0.00
9,100.0	90.00	269.45	6,360.0	-854.2	-2,736.2	2,848.1	0.00	0.00	0.00
9,200.0	90.00	269.45	6,360.0	-855.1	-2,836.1	2,946.5	0.00	0.00	0.00
9,300.0	90.00	269.45	6,360.0	-856.1	-2,936.1	3,044.9	0.00	0.00	0.00
9,400.0	90.00	269.45	6,360.0	-857.0	-3,036.1	3,143.3	0.00	0.00	0.00
9,500.0	90.00	269.45	6,360.0	-858.0	-3,136.1	3,241.7	0.00	0.00	0.00
9,600.0	90.00	269.45	6,360.0	-858.9	-3,236.1	3,340.0	0.00	0.00	0.00
9,700.0	90.00	269.45	6,360.0	-859.9	-3,336.1	3,438.4	0.00	0.00	0.00
9,800.0	90.00	269.45	6,360.0	-860.8	-3,436.1	3,536.8	0.00	0.00	0.00

Plan Annotations					
	Measured Depth (ft)	Vertical Depth (ft)	Local Coordinates		Comment
			+N/-S (ft)	+E/-W (ft)	
	400.0	400.0	0.0	0.0	KOP - Start Build 2.00
	4,708.8	4,630.4	-770.8	213.6	Start Drop -2.00
	5,726.0	5,643.8	-825.9	228.9	KOP #2 - Start Build 8.00
	10,900.9	6,360.0	-871.3	-4,537.0	TD at 10900.9



## **Synergy Resources**

**SEC.16-T4N-R68W**

**SRC Cannon Pad Sec.16-T4N-R68W**

**SRC Cannon 14-16CHZ**

**Wellbore #1**

**Plan #1 (10-20-14)**

## **Anticollision Report**

**21 October, 2014**





<b>Company:</b>	Synergy Resources	<b>Local Co-ordinate Reference:</b>	Well SRC Cannon 14-16CHZ
<b>Project:</b>	SEC.16-T4N-R68W	<b>TVD Reference:</b>	WELL @ 4942.0ft (Original Well Elev)
<b>Reference Site:</b>	SRC Cannon Pad Sec.16-T4N-R68W	<b>MD Reference:</b>	WELL @ 4942.0ft (Original Well Elev)
<b>Site Error:</b>	0.0ft	<b>North Reference:</b>	True
<b>Reference Well:</b>	SRC Cannon 14-16CHZ	<b>Survey Calculation Method:</b>	Minimum Curvature
<b>Well Error:</b>	0.0ft	<b>Output errors are at</b>	2.00 sigma
<b>Reference Wellbore</b>	Wellbore #1	<b>Database:</b>	Landmark
<b>Reference Design:</b>	Plan #1 (10-20-14)	<b>Offset TVD Reference:</b>	Offset Datum

<b>Offset Design</b> Existing Wells Pad Sec.16-T4N-R68W - Zoller #1 (P&A) - Wellbore #1 - Wellbore #1												<b>Offset Site Error:</b>	0.0 ft
Survey Program: 6416-UNKNOWN												<b>Offset Well Error:</b>	0.0 ft
Reference	Offset	Semi Major Axis		Distance									
Measured Depth (ft)	Vertical Depth (ft)	Measured Depth (ft)	Vertical Depth (ft)	Reference (ft)	Offset (ft)	Highside Toolface (°)	Offset Wellbore Centre +N/-S (ft)	+E/-W (ft)	Between Centres (ft)	Between Ellipses (ft)	Minimum Separation (ft)	Separation Factor	Warning
10,300.0	6,360.0	6,354.0	6,354.0	113.2	127.1	90.00	-477.0	-3,132.1	893.0	653.0	240.04	3.720	
10,400.0	6,360.0	6,354.0	6,354.0	116.0	127.1	90.00	-477.0	-3,132.1	984.4	741.6	242.82	4.054	

<b>Company:</b>	Synergy Resources	<b>Local Co-ordinate Reference:</b>	Well SRC Cannon 14-16CHZ
<b>Project:</b>	SEC.16-T4N-R68W	<b>TVD Reference:</b>	WELL @ 4942.0ft (Original Well Elev)
<b>Reference Site:</b>	SRC Cannon Pad Sec.16-T4N-R68W	<b>MD Reference:</b>	WELL @ 4942.0ft (Original Well Elev)
<b>Site Error:</b>	0.0ft	<b>North Reference:</b>	True
<b>Reference Well:</b>	SRC Cannon 14-16CHZ	<b>Survey Calculation Method:</b>	Minimum Curvature
<b>Well Error:</b>	0.0ft	<b>Output errors are at</b>	2.00 sigma
<b>Reference Wellbore</b>	Wellbore #1	<b>Database:</b>	Landmark
<b>Reference Design:</b>	Plan #1 (10-20-14)	<b>Offset TVD Reference:</b>	Offset Datum

Offset Design													Offset Site Error:	0.0 ft
Survey Program: 0-MWD													Offset Well Error:	0.0 ft
Reference		Offset		Semi Major Axis			Distance							Warning
Measured Depth (ft)	Vertical Depth (ft)	Measured Depth (ft)	Vertical Depth (ft)	Reference (ft)	Offset (ft)	Highside Toolface (°)	Offset Wellbore Centre +N/-S (ft)	+E/-W (ft)	Between Centres (ft)	Between Ellipses (ft)	Minimum Separation (ft)	Separation Factor		
0.0	0.0	0.0	0.0	0.0	0.0	0.00	22.6	0.0	22.6					
100.0	100.0	100.0	100.0	0.1	0.1	0.00	22.6	0.0	22.6	22.4	0.22	100.564		
200.0	200.0	200.0	200.0	0.3	0.3	0.00	22.6	0.0	22.6	21.9	0.67	33.521		
300.0	300.0	300.0	300.0	0.6	0.6	0.00	22.6	0.0	22.6	21.5	1.12	20.113		
400.0	400.0	400.0	400.0	0.8	0.8	0.00	22.6	0.0	22.6	21.0	1.57	14.366 CC, ES		
500.0	500.0	500.0	500.0	1.0	1.0	-165.60	22.6	0.0	24.3	22.3	2.00	12.143		
600.0	599.8	599.8	599.8	1.2	1.2	-168.12	22.6	0.0	29.4	27.0	2.42	12.157		
700.0	699.5	699.5	699.5	1.4	1.5	-170.80	22.6	0.0	38.0	35.1	2.85	13.338		
800.0	798.7	798.7	798.7	1.7	1.7	-173.00	22.6	0.0	50.0	46.7	3.28	15.247		
900.0	897.5	899.7	899.7	2.0	1.9	-174.40	21.0	0.6	63.9	60.2	3.69	17.309		
1,000.0	995.6	1,001.2	1,001.0	2.3	2.1	-175.09	16.0	2.4	77.7	73.6	4.09	19.006		
1,100.0	1,093.7	1,103.5	1,102.9	2.7	2.3	-175.26	7.5	5.5	88.9	84.4	4.51	19.716		
1,200.0	1,191.7	1,206.5	1,205.1	3.1	2.5	-175.05	-4.4	9.9	96.6	91.7	4.95	19.503		
1,300.0	1,289.7	1,309.5	1,306.9	3.5	2.8	-174.53	-19.8	15.5	100.8	95.4	5.42	18.607		
1,400.0	1,387.7	1,409.5	1,405.3	4.0	3.1	-173.91	-36.1	21.4	103.6	97.7	5.89	17.578		
1,500.0	1,485.7	1,509.5	1,503.8	4.4	3.4	-173.33	-52.4	27.3	106.4	100.0	6.38	16.677		
1,600.0	1,583.7	1,609.4	1,602.2	4.8	3.8	-172.77	-68.7	33.3	109.2	102.3	6.87	15.884		
1,700.0	1,681.7	1,709.4	1,700.6	5.2	4.1	-172.25	-84.9	39.2	112.0	104.6	7.38	15.183		
1,800.0	1,779.7	1,809.3	1,799.1	5.7	4.5	-171.75	-101.2	45.1	114.8	106.9	7.88	14.561		
1,900.0	1,877.7	1,909.3	1,897.5	6.1	4.8	-171.27	-117.5	51.1	117.6	109.2	8.40	14.005		
2,000.0	1,975.7	2,009.2	1,996.0	6.6	5.2	-170.82	-133.7	57.0	120.5	111.5	8.92	13.505		
2,100.0	2,073.7	2,109.2	2,094.4	7.0	5.6	-170.39	-150.0	62.9	123.3	113.9	9.44	13.055		
2,200.0	2,171.7	2,209.1	2,192.9	7.4	6.0	-169.97	-166.3	68.9	126.2	116.2	9.97	12.648		
2,300.0	2,269.7	2,309.1	2,291.3	7.9	6.4	-169.58	-182.6	74.8	129.0	118.5	10.51	12.278		
2,400.0	2,367.7	2,409.1	2,389.7	8.3	6.7	-169.20	-198.8	80.7	131.9	120.8	11.04	11.940		
2,500.0	2,465.7	2,509.0	2,488.2	8.8	7.1	-168.84	-215.1	86.7	134.7	123.1	11.58	11.630		
2,600.0	2,563.7	2,609.0	2,586.6	9.2	7.5	-168.49	-231.4	92.6	137.6	125.5	12.13	11.346		
2,700.0	2,661.7	2,708.9	2,685.1	9.6	7.9	-168.16	-247.7	98.5	140.5	127.8	12.67	11.083		
2,800.0	2,759.7	2,808.9	2,783.5	10.1	8.3	-167.84	-263.9	104.5	143.4	130.1	13.22	10.841		
2,900.0	2,857.7	2,908.8	2,882.0	10.5	8.7	-167.53	-280.2	110.4	146.2	132.5	13.77	10.616		
3,000.0	2,955.7	3,008.8	2,980.4	11.0	9.1	-167.24	-296.5	116.3	149.1	134.8	14.33	10.407		
3,100.0	3,053.7	3,108.7	3,078.8	11.4	9.5	-166.96	-312.7	122.3	152.0	137.1	14.88	10.213		
3,200.0	3,151.7	3,208.7	3,177.3	11.9	9.9	-166.68	-329.0	128.2	154.9	139.5	15.44	10.031		
3,300.0	3,249.7	3,308.7	3,275.7	12.3	10.3	-166.42	-345.3	134.1	157.8	141.8	16.00	9.861		
3,400.0	3,347.7	3,408.6	3,374.2	12.7	10.7	-166.17	-361.6	140.1	160.7	144.1	16.57	9.701		
3,500.0	3,445.7	3,508.6	3,472.6	13.2	11.1	-165.92	-377.8	146.0	163.6	146.5	17.13	9.551		
3,600.0	3,543.7	3,608.5	3,571.1	13.6	11.5	-165.69	-394.1	151.9	166.5	148.8	17.70	9.410		
3,700.0	3,641.7	3,708.5	3,669.5	14.1	11.9	-165.46	-410.4	157.9	169.4	151.2	18.26	9.277		
3,800.0	3,739.7	3,808.4	3,768.0	14.5	12.3	-165.24	-426.7	163.8	172.3	153.5	18.83	9.152		
3,900.0	3,837.7	3,908.4	3,866.4	15.0	12.7	-165.03	-442.9	169.7	175.3	155.9	19.40	9.033		
4,000.0	3,935.7	4,008.3	3,964.8	15.4	13.1	-164.82	-459.2	175.7	178.2	158.2	19.97	8.921		
4,100.0	4,033.7	4,108.3	4,063.3	15.9	13.5	-164.62	-475.5	181.6	181.1	160.5	20.55	8.814		
4,200.0	4,131.7	4,208.3	4,161.7	16.3	13.9	-164.43	-491.7	187.5	184.0	162.9	21.12	8.713		
4,300.0	4,229.7	4,308.2	4,260.2	16.7	14.3	-164.24	-508.0	193.5	186.9	165.2	21.70	8.616		
4,400.0	4,327.7	4,408.2	4,358.6	17.2	14.7	-164.06	-524.3	199.4	189.9	167.6	22.27	8.525		
4,500.0	4,425.7	4,508.1	4,457.1	17.6	15.1	-163.88	-540.6	205.3	192.8	169.9	22.85	8.437		
4,600.0	4,523.7	4,608.1	4,555.5	18.1	15.5	-163.71	-556.8	211.3	195.7	172.3	23.43	8.354		
4,700.0	4,621.7	4,704.9	4,650.9	18.5	15.8	-163.60	-572.2	216.9	199.1	175.1	23.98	8.301		
4,800.0	4,720.1	4,800.0	4,745.1	18.9	16.1	-163.67	-588.8	221.4	203.7	179.2	24.44	8.333		
4,900.0	4,818.9	4,892.3	4,836.8	19.1	16.3	-163.80	-594.1	224.8	208.0	183.2	24.82	8.380		
5,000.0	4,918.2	4,985.8	4,930.0	19.4	16.5	-163.96	-600.8	227.3	212.1	186.9	25.15	8.432		
5,100.0	5,017.9	5,079.2	5,023.3	19.6	16.6	-164.16	-604.5	228.6	215.9	190.4	25.43	8.489		

CC - Min centre to center distance or convergent point, SF - min separation factor, ES - min ellipse separation

Offset Design													Offset Site Error:		0.0 ft
Survey Program: 0-MWD													Offset Well Error:		0.0 ft
Reference		Offset		Semi Major Axis			Distance							Warning	
Measured Depth	Vertical Depth	Measured Depth	Vertical Depth	Reference	Offset	Highside Toolface	Offset Wellbore Centre		Between Centres	Between Ellipses	Minimum Separation	Separation Factor			
(ft)	(ft)	(ft)	(ft)	(ft)	(ft)	(°)	+N/-S (ft)	+E/-W (ft)	(ft)	(ft)	(ft)				
5,200.0	5,117.8	5,173.6	5,117.8	19.7	16.8	-164.39	-605.5	229.0	219.3	193.6	25.66	8.544			
5,300.0	5,217.8	5,273.6	5,217.8	19.8	16.9	0.03	-605.5	229.0	220.4	184.6	35.78	6.161			
5,400.0	5,317.8	5,373.6	5,317.8	19.9	17.0	0.03	-605.5	229.0	220.4	184.4	36.00	6.122			
5,500.0	5,417.8	5,473.6	5,417.8	20.0	17.1	0.03	-605.5	229.0	220.4	184.2	36.23	6.083			
5,600.0	5,517.8	5,573.7	5,517.9	20.1	17.3	-0.08	-605.5	228.6	220.4	183.9	36.48	6.042			
5,632.3	5,550.1	5,606.0	5,550.1	20.2	17.3	-0.55	-605.5	226.8	220.4	183.8	36.60	6.021			
5,700.0	5,617.8	5,672.8	5,616.3	20.2	17.3	-2.72	-605.6	218.4	220.6	183.6	36.96	5.968			
5,800.0	5,717.7	5,768.3	5,709.1	20.3	17.4	82.80	-605.8	195.9	222.2	195.6	26.58	8.359			
5,900.0	5,816.1	5,861.4	5,795.8	20.4	17.4	77.92	-606.1	162.2	225.6	199.1	26.47	8.522			
6,000.0	5,911.2	5,952.4	5,875.7	20.4	17.4	73.45	-606.6	118.7	230.2	203.7	26.52	8.683			
6,100.0	6,001.0	6,041.6	5,947.9	20.5	17.5	69.45	-607.1	66.6	235.7	209.1	26.67	8.838			
6,200.0	6,083.9	6,129.1	6,012.1	20.5	17.5	65.98	-607.6	7.1	241.7	214.8	26.90	8.984			
6,300.0	6,158.3	6,215.4	6,067.7	20.5	17.5	63.04	-608.3	-58.8	247.7	220.4	27.23	9.097			
6,400.0	6,222.6	6,300.0	6,114.2	20.5	17.6	60.63	-608.9	-129.4	253.2	225.6	27.60	9.175			
6,500.0	6,275.7	6,384.8	6,152.1	20.6	17.8	58.71	-609.7	-205.2	258.1	229.8	28.28	9.128			
6,600.0	6,316.5	6,468.4	6,180.5	20.9	18.3	57.29	-610.4	-283.8	262.0	232.7	29.30	8.942			
6,700.0	6,344.1	6,550.0	6,199.2	21.4	19.3	56.35	-611.2	-363.2	264.8	234.1	30.76	8.609			
6,800.0	6,358.2	6,634.3	6,208.9	22.4	20.8	55.84	-612.0	-446.8	266.3	233.5	32.76	8.130			
6,900.0	6,360.0	6,725.8	6,210.0	23.9	22.6	55.75	-612.9	-538.4	266.5	230.9	35.66	7.476			
7,000.0	6,360.0	6,825.8	6,210.0	25.8	24.8	55.75	-613.8	-638.4	266.5	227.2	39.30	6.782			
7,100.0	6,360.0	6,925.8	6,210.0	28.0	27.0	55.75	-614.8	-738.4	266.5	223.4	43.16	6.176			
7,200.0	6,360.0	7,025.8	6,210.0	30.2	29.4	55.75	-615.8	-838.4	266.5	219.4	47.17	5.650			
7,300.0	6,360.0	7,125.8	6,210.0	32.6	31.8	55.75	-616.7	-938.3	266.5	215.2	51.30	5.195			
7,400.0	6,360.0	7,225.8	6,210.0	35.0	34.3	55.75	-617.7	-1,038.3	266.5	211.0	55.53	4.800			
7,500.0	6,360.0	7,325.8	6,210.0	37.5	36.8	55.75	-618.6	-1,138.3	266.5	206.7	59.82	4.455			
7,600.0	6,360.0	7,425.8	6,210.0	40.0	39.4	55.75	-619.6	-1,238.3	266.5	202.3	64.18	4.152			
7,700.0	6,360.0	7,525.8	6,210.0	42.5	42.0	55.75	-620.6	-1,338.3	266.5	197.9	68.58	3.886			
7,800.0	6,360.0	7,625.8	6,210.0	45.1	44.6	55.75	-621.5	-1,438.3	266.5	193.5	73.03	3.649			
7,900.0	6,360.0	7,725.8	6,210.0	47.7	47.3	55.74	-622.5	-1,538.3	266.5	189.0	77.50	3.438			
8,000.0	6,360.0	7,825.8	6,210.0	50.4	49.9	55.74	-623.4	-1,638.3	266.5	184.5	82.00	3.250			
8,100.0	6,360.0	7,925.8	6,210.0	53.0	52.6	55.74	-624.4	-1,738.3	266.5	179.9	86.53	3.080			
8,200.0	6,360.0	8,025.8	6,210.0	55.7	55.3	55.74	-625.4	-1,838.3	266.5	175.4	91.07	2.926			
8,300.0	6,360.0	8,125.8	6,210.0	58.4	58.0	55.74	-626.3	-1,938.3	266.5	170.8	95.63	2.786			
8,400.0	6,360.0	8,225.8	6,210.0	61.1	60.7	55.74	-627.3	-2,038.3	266.5	166.2	100.21	2.659			
8,500.0	6,360.0	8,325.8	6,210.0	63.8	63.4	55.74	-628.3	-2,138.3	266.4	161.7	104.79	2.543			
8,600.0	6,360.0	8,425.8	6,210.0	66.5	66.2	55.74	-629.2	-2,238.3	266.4	157.0	109.39	2.436			
8,700.0	6,360.0	8,525.8	6,210.0	69.2	68.9	55.74	-630.2	-2,338.3	266.4	152.4	114.00	2.337			
8,800.0	6,360.0	8,625.8	6,210.0	71.9	71.6	55.74	-631.1	-2,438.3	266.4	147.8	118.61	2.246			
8,900.0	6,360.0	8,725.8	6,210.0	74.6	74.4	55.73	-632.1	-2,538.3	266.4	143.2	123.23	2.162			
9,000.0	6,360.0	8,825.8	6,210.0	77.4	77.1	55.73	-633.1	-2,638.3	266.4	138.5	127.86	2.084			
9,100.0	6,360.0	8,925.8	6,210.0	80.1	79.9	55.73	-634.0	-2,738.3	266.4	133.9	132.50	2.011			
9,200.0	6,360.0	9,025.8	6,210.0	82.9	82.6	55.73	-635.0	-2,838.3	266.4	129.3	137.14	1.943			
9,300.0	6,360.0	9,125.8	6,210.0	85.6	85.4	55.73	-635.9	-2,938.3	266.4	124.6	141.78	1.879			
9,400.0	6,360.0	9,225.8	6,210.0	88.4	88.1	55.73	-636.9	-3,038.3	266.4	120.0	146.43	1.819			
9,500.0	6,360.0	9,325.8	6,210.0	91.1	90.9	55.73	-637.9	-3,138.2	266.4	115.3	151.08	1.763			
9,600.0	6,360.0	9,425.8	6,210.0	93.9	93.7	55.73	-638.8	-3,238.2	266.4	110.6	155.74	1.710			
9,700.0	6,360.0	9,525.8	6,210.0	96.6	96.4	55.73	-639.8	-3,338.2	266.4	106.0	160.40	1.661			
9,800.0	6,360.0	9,625.8	6,210.0	99.4	99.2	55.73	-640.7	-3,438.2	266.4	101.3	165.06	1.614			
9,900.0	6,360.0	9,725.8	6,210.0	102.2	102.0	55.73	-641.7	-3,538.2	266.4	96.6	169.73	1.569			
10,000.0	6,360.0	9,825.8	6,210.0	104.9	104.7	55.72	-642.7	-3,638.2	266.3	92.0	174.40	1.527			
10,100.0	6,360.0	9,925.8	6,210.0	107.7	107.5	55.72	-643.6	-3,738.2	266.3	87.3	179.07	1.487 Level 3			
10,200.0	6,360.0	10,025.8	6,210.0	110.5	110.3	55.72	-644.6	-3,838.2	266.3	82.6	183.74	1.450 Level 3			

<b>Company:</b>	Synergy Resources	<b>Local Co-ordinate Reference:</b>	Well SRC Cannon 14-16CHZ
<b>Project:</b>	SEC.16-T4N-R68W	<b>TVD Reference:</b>	WELL @ 4942.0ft (Original Well Elev)
<b>Reference Site:</b>	SRC Cannon Pad Sec.16-T4N-R68W	<b>MD Reference:</b>	WELL @ 4942.0ft (Original Well Elev)
<b>Site Error:</b>	0.0ft	<b>North Reference:</b>	True
<b>Reference Well:</b>	SRC Cannon 14-16CHZ	<b>Survey Calculation Method:</b>	Minimum Curvature
<b>Well Error:</b>	0.0ft	<b>Output errors are at</b>	2.00 sigma
<b>Reference Wellbore</b>	Wellbore #1	<b>Database:</b>	Landmark
<b>Reference Design:</b>	Plan #1 (10-20-14)	<b>Offset TVD Reference:</b>	Offset Datum

<b>Offset Design</b>												<b>Offset Site Error:</b>	0.0 ft
SRC Cannon Pad Sec.16-T4N-R68W - SRC Cannon 14-16NHZ - Wellbore #1 - Plan #1 (10-20-14)												<b>Offset Well Error:</b>	0.0 ft
Survey Program: 0-MWD													
Reference		Offset		Semi Major Axis			Distance						
Measured Depth (ft)	Vertical Depth (ft)	Measured Depth (ft)	Vertical Depth (ft)	Reference (ft)	Offset (ft)	Highside Toolface (°)	Offset Wellbore Centre +N/-S (ft)	+E/-W (ft)	Between Centres (ft)	Between Ellipses (ft)	Minimum Separation (ft)	Separation Factor	Warning
10,300.0	6,360.0	10,125.8	6,210.0	113.2	113.1	55.72	-645.6	-3,938.2	266.3	77.9	188.41	1.414	Level 3
10,400.0	6,360.0	10,225.8	6,210.0	116.0	115.9	55.72	-646.5	-4,038.2	266.3	73.2	193.09	1.379	Level 3
10,500.0	6,360.0	10,325.8	6,210.0	118.8	118.6	55.72	-647.5	-4,138.2	266.3	68.6	197.77	1.347	Level 3
10,600.0	6,360.0	10,425.8	6,210.0	121.6	121.4	55.72	-648.4	-4,238.2	266.3	63.9	202.45	1.315	Level 3
10,700.0	6,360.0	10,525.8	6,210.0	124.3	124.2	55.72	-649.4	-4,338.2	266.3	59.2	207.13	1.286	Level 3
10,800.0	6,360.0	10,625.8	6,210.0	127.1	127.0	55.72	-650.4	-4,438.2	266.3	54.5	211.81	1.257	Level 3
10,871.5	6,360.0	10,697.4	6,210.0	129.1	129.0	55.72	-651.0	-4,509.7	266.3	51.1	215.16	1.238	Level 2
10,900.0	6,360.0	10,724.0	6,210.0	129.9	129.7	55.72	-651.3	-4,536.4	266.3	49.8	216.45	1.230	Level 2
10,900.9	6,360.0	10,724.0	6,210.0	129.9	129.7	55.72	-651.3	-4,536.4	266.3	49.8	216.47	1.230	Level 2, SF

SRC Cannon Pad Sec.16-T4N-R68W - SRC Cannon 24-16CHZ - Wellbore #1 - Plan #1 (10-20-14)												Offset Site Error:	0.0 ft
Survey Program: 0-MWD												Offset Well Error:	0.0 ft
Reference		Offset		Semi Major Axis			Distance						
Measured Depth	Vertical Depth	Measured Depth	Vertical Depth	Reference	Offset	Highside Toolface	Offset Wellbore Centre		Between Centres	Between Ellipses	Minimum Separation	Separation Factor	Warning
(ft)	(ft)	(ft)	(ft)	(ft)	(ft)	(°)	+N/-S (ft)	+E/-W (ft)	(ft)	(ft)	(ft)		
0.0	0.0	1.0	1.0	0.0	0.0	0.00	45.2	0.0	45.2	45.2	0.00	N/A	
100.0	100.0	101.0	101.0	0.1	0.1	0.00	45.2	0.0	45.2	45.0	0.23	199.065	
200.0	200.0	201.0	201.0	0.3	0.3	0.00	45.2	0.0	45.2	44.5	0.68	66.796	
300.0	300.0	301.0	301.0	0.6	0.6	0.00	45.2	0.0	45.2	44.1	1.13	40.131	
400.0	400.0	401.0	401.0	0.8	0.8	0.00	45.2	0.0	45.2	43.6	1.58	28.681 CC, ES	
500.0	500.0	501.0	501.0	1.0	1.0	-165.07	45.2	0.0	46.9	44.9	2.00	23.407	
600.0	599.8	600.8	600.8	1.2	1.2	-166.53	45.2	0.0	51.9	49.5	2.42	21.470	
700.0	699.5	700.5	700.5	1.4	1.5	-168.42	45.2	0.0	60.5	57.6	2.85	21.226	
800.0	798.7	799.7	799.7	1.7	1.7	-170.32	45.2	0.0	72.4	69.2	3.28	22.057	
900.0	897.5	898.5	898.5	2.0	1.9	-171.99	45.2	0.0	87.9	84.2	3.72	23.602	
1,000.0	995.6	996.6	996.6	2.3	2.1	-173.37	45.2	0.0	106.7	102.5	4.17	25.599	
1,100.0	1,093.7	1,098.8	1,098.7	2.7	2.3	-174.21	43.7	0.8	124.9	120.3	4.60	27.164	
1,200.0	1,191.7	1,202.2	1,202.0	3.1	2.5	-174.36	38.9	3.3	139.8	134.8	5.02	27.870	
1,300.0	1,289.7	1,306.6	1,306.0	3.5	2.7	-174.05	30.7	7.7	151.3	145.8	5.45	27.731	
1,400.0	1,387.7	1,410.9	1,409.4	4.0	3.0	-173.34	19.2	13.8	159.3	153.4	5.91	26.952	
1,500.0	1,485.7	1,510.6	1,508.2	4.4	3.2	-172.58	7.1	20.2	166.1	159.7	6.38	26.041	
1,600.0	1,583.7	1,610.3	1,607.0	4.8	3.5	-171.88	-5.1	26.7	173.0	166.1	6.86	25.218	
1,700.0	1,681.7	1,710.1	1,705.8	5.2	3.8	-171.23	-17.2	33.2	179.8	172.5	7.35	24.474	
1,800.0	1,779.7	1,809.8	1,804.6	5.7	4.0	-170.63	-29.4	39.6	186.7	178.8	7.84	23.799	
1,900.0	1,877.7	1,909.6	1,903.4	6.1	4.3	-170.07	-41.5	46.1	193.6	185.2	8.35	23.191	
2,000.0	1,975.7	2,009.3	2,002.2	6.6	4.6	-169.55	-53.7	52.5	200.5	191.6	8.86	22.634	
2,100.0	2,073.7	2,109.1	2,101.0	7.0	5.0	-169.06	-65.8	59.0	207.4	198.1	9.37	22.127	
2,200.0	2,171.7	2,208.8	2,199.8	7.4	5.3	-168.61	-78.0	65.5	214.4	204.5	9.90	21.663	
2,300.0	2,269.7	2,308.6	2,298.6	7.9	5.6	-168.18	-90.2	71.9	221.3	210.9	10.42	21.237	
2,400.0	2,367.7	2,408.3	2,397.4	8.3	5.9	-167.78	-102.3	78.4	228.3	217.3	10.95	20.846	
2,500.0	2,465.7	2,508.0	2,496.1	8.8	6.2	-167.41	-114.5	84.8	235.3	223.8	11.48	20.485	
2,600.0	2,563.7	2,607.8	2,594.9	9.2	6.6	-167.05	-126.6	91.3	242.3	230.2	12.02	20.151	
2,700.0	2,661.7	2,707.5	2,693.7	9.6	6.9	-166.72	-138.8	97.7	249.2	236.7	12.56	19.842	
2,800.0	2,759.7	2,807.3	2,792.5	10.1	7.2	-166.40	-150.9	104.2	256.3	243.1	13.10	19.554	
2,900.0	2,857.7	2,907.0	2,891.3	10.5	7.6	-166.10	-163.1	110.7	263.3	249.6	13.65	19.287	
3,000.0	2,955.7	3,006.8	2,990.1	11.0	7.9	-165.82	-175.2	117.1	270.3	256.1	14.20	19.037	
3,100.0	3,053.7	3,106.5	3,088.9	11.4	8.3	-165.55	-187.4	123.6	277.3	262.6	14.75	18.804	
3,200.0	3,151.7	3,206.3	3,187.7	11.9	8.6	-165.29	-199.6	130.0	284.3	269.0	15.30	18.585	
3,300.0	3,249.7	3,306.0	3,286.5	12.3	8.9	-165.05	-211.7	136.5	291.4	275.5	15.85	18.380	
3,400.0	3,347.7	3,405.7	3,385.3	12.7	9.3	-164.81	-223.9	143.0	298.4	282.0	16.41	18.187	
3,500.0	3,445.7	3,505.5	3,484.0	13.2	9.6	-164.59	-236.0	149.4	305.5	288.5	16.96	18.005	
3,600.0	3,543.7	3,605.2	3,582.8	13.6	10.0	-164.38	-248.2	155.9	312.5	295.0	17.52	17.834	
3,700.0	3,641.7	3,705.0	3,681.6	14.1	10.3	-164.18	-260.3	162.3	319.6	301.5	18.08	17.672	
3,800.0	3,739.8	3,804.7	3,780.4	14.5	10.6	-163.99	-272.5	168.8	326.6	308.0	18.64	17.519	
3,900.0	3,837.8	3,904.5	3,879.2	15.0	11.0	-163.80	-284.6	175.2	333.7	314.5	19.21	17.374	
4,000.0	3,935.8	4,004.2	3,978.0	15.4	11.3	-163.62	-296.8	181.7	340.7	321.0	19.77	17.236	
4,100.0	4,033.8	4,104.0	4,076.8	15.9	11.7	-163.45	-309.0	188.2	347.8	327.5	20.33	17.105	
4,200.0	4,131.8	4,203.7	4,175.6	16.3	12.0	-163.29	-321.1	194.6	354.9	334.0	20.90	16.981	
4,300.0	4,229.8	4,303.4	4,274.4	16.7	12.4	-163.13	-333.3	201.1	361.9	340.5	21.46	16.862	
4,400.0	4,327.8	4,403.2	4,373.2	17.2	12.7	-162.98	-345.4	207.5	369.0	347.0	22.03	16.750	
4,500.0	4,425.8	4,502.9	4,472.0	17.6	13.0	-162.83	-357.6	214.0	376.1	353.5	22.60	16.642	
4,600.0	4,523.8	4,595.7	4,563.9	18.1	13.3	-162.75	-368.3	219.7	383.8	360.7	23.13	16.595	
4,700.0	4,621.8	4,684.7	4,652.4	18.5	13.5	-162.86	-376.3	224.0	394.0	370.4	23.58	16.708	
4,800.0	4,720.1	4,773.2	4,740.7	18.9	13.7	-163.17	-381.9	226.9	405.6	381.6	24.00	16.900	
4,900.0	4,818.9	4,861.5	4,829.0	19.1	13.9	-163.53	-385.0	228.6	416.5	392.1	24.34	17.113	
5,000.0	4,918.2	4,951.8	4,919.2	19.4	14.0	-163.92	-385.8	229.0	426.7	402.1	24.64	17.320	
5,100.0	5,017.9	5,051.5	5,018.9	19.6	14.2	-164.26	-385.8	229.0	434.5	409.6	24.92	17.435	

<b>Company:</b>	Synergy Resources	<b>Local Co-ordinate Reference:</b>	Well SRC Cannon 14-16CHZ
<b>Project:</b>	SEC.16-T4N-R68W	<b>TVD Reference:</b>	WELL @ 4942.0ft (Original Well Elev)
<b>Reference Site:</b>	SRC Cannon Pad Sec.16-T4N-R68W	<b>MD Reference:</b>	WELL @ 4942.0ft (Original Well Elev)
<b>Site Error:</b>	0.0ft	<b>North Reference:</b>	True
<b>Reference Well:</b>	SRC Cannon 14-16CHZ	<b>Survey Calculation Method:</b>	Minimum Curvature
<b>Well Error:</b>	0.0ft	<b>Output errors are at</b>	2.00 sigma
<b>Reference Wellbore</b>	Wellbore #1	<b>Database:</b>	Landmark
<b>Reference Design:</b>	Plan #1 (10-20-14)	<b>Offset TVD Reference:</b>	Offset Datum

Offset Design SRC Cannon Pad Sec.16-T4N-R68W - SRC Cannon 24-16CHZ - Wellbore #1 - Plan #1 (10-20-14)													Offset Site Error:	0.0 ft
Survey Program: 0-MWD													Offset Well Error:	0.0 ft
Reference		Offset		Semi Major Axis			Distance							Warning
Measured Depth (ft)	Vertical Depth (ft)	Measured Depth (ft)	Vertical Depth (ft)	Reference (ft)	Offset (ft)	Highside Toolface (°)	Offset Wellbore Centre +N/-S (ft)	+E/-W (ft)	Between Centres (ft)	Between Ellipses (ft)	Minimum Separation (ft)	Separation Factor		
5,200.0	5,117.8	5,151.4	5,118.8	19.7	14.3	-164.45	-385.8	229.0	439.0	413.8	25.19	17.428		
5,300.0	5,217.8	5,251.4	5,218.8	19.8	14.4	0.01	-385.8	229.0	440.1	406.8	33.24	13.238		
5,400.0	5,317.8	5,351.4	5,318.8	19.9	14.6	0.01	-385.8	229.0	440.1	406.6	33.50	13.138		
5,500.0	5,417.8	5,451.4	5,418.8	20.0	14.7	0.01	-385.8	229.0	440.1	406.3	33.76	13.037		
5,600.0	5,517.8	5,551.4	5,518.8	20.1	14.9	0.01	-385.8	229.0	440.1	406.1	34.02	12.936		
5,700.0	5,617.8	5,651.4	5,618.8	20.2	15.0	0.01	-385.8	229.0	440.1	405.8	34.29	12.836		
5,800.0	5,717.7	5,751.8	5,719.1	20.3	15.2	90.54	-385.8	225.0	440.1	413.0	27.13	16.222		
5,900.0	5,816.1	5,852.4	5,818.0	20.4	15.3	90.51	-386.0	207.5	440.1	412.8	27.31	16.113		
6,000.0	5,911.2	5,952.9	5,913.5	20.4	15.3	90.47	-386.3	176.3	440.1	412.7	27.41	16.054		
6,100.0	6,001.0	6,053.4	6,003.7	20.5	15.4	90.42	-386.7	132.0	440.1	412.6	27.52	15.991		
6,200.0	6,083.9	6,153.8	6,086.7	20.5	15.4	90.36	-387.3	75.7	440.1	412.3	27.77	15.845		
6,300.0	6,158.3	6,254.2	6,160.9	20.5	15.4	90.29	-387.9	8.3	440.1	411.7	28.35	15.522		
6,400.0	6,222.6	6,354.5	6,225.0	20.5	15.4	90.22	-388.7	-68.7	440.0	410.6	29.44	14.949		
6,500.0	6,275.7	6,454.7	6,277.7	20.6	15.6	90.15	-389.5	-153.9	440.0	408.9	31.18	14.113		
6,600.0	6,316.5	6,554.8	6,318.0	20.9	16.7	90.07	-390.4	-245.4	440.0	406.4	33.64	13.081		
6,700.0	6,344.1	6,654.8	6,345.1	21.4	18.3	89.99	-391.3	-341.6	440.0	403.3	36.76	11.970		
6,800.0	6,358.2	6,754.7	6,358.5	22.4	20.2	89.91	-392.2	-440.6	440.0	399.6	40.42	10.887		
6,900.0	6,360.0	6,854.7	6,360.0	23.9	22.2	89.87	-393.2	-540.5	440.0	395.5	44.47	9.895		
7,000.0	6,360.0	6,954.7	6,360.0	25.8	24.4	89.87	-394.2	-640.5	440.0	391.2	48.80	9.016		
7,100.0	6,360.0	7,054.7	6,360.0	28.0	26.7	89.87	-395.1	-740.5	440.0	386.6	53.38	8.243		
7,200.0	6,360.0	7,154.7	6,360.0	30.2	29.1	89.87	-396.1	-840.5	440.0	381.8	58.13	7.568		
7,300.0	6,360.0	7,254.7	6,360.0	32.6	31.6	89.87	-397.1	-940.5	440.0	376.9	63.03	6.980		
7,400.0	6,360.0	7,354.7	6,360.0	35.0	34.1	89.87	-398.0	-1,040.5	440.0	371.9	68.04	6.466		
7,500.0	6,360.0	7,454.7	6,360.0	37.5	36.7	89.87	-399.0	-1,140.5	440.0	366.8	73.13	6.016		
7,600.0	6,360.0	7,554.7	6,360.0	40.0	39.2	89.87	-399.9	-1,240.4	440.0	361.7	78.30	5.619		
7,700.0	6,360.0	7,654.7	6,360.0	42.5	41.8	89.87	-400.9	-1,340.4	439.9	356.4	83.52	5.267		
7,800.0	6,360.0	7,754.7	6,360.0	45.1	44.5	89.87	-401.9	-1,440.4	439.9	351.1	88.79	4.955		
7,900.0	6,360.0	7,854.7	6,360.0	47.7	47.1	89.87	-402.8	-1,540.4	439.9	345.8	94.10	4.675		
8,000.0	6,360.0	7,954.7	6,360.0	50.4	49.8	89.87	-403.8	-1,640.4	439.9	340.5	99.44	4.424		
8,100.0	6,360.0	8,054.7	6,360.0	53.0	52.5	89.87	-404.7	-1,740.4	439.9	335.1	104.81	4.197		
8,200.0	6,360.0	8,154.7	6,360.0	55.7	55.2	89.87	-405.7	-1,840.4	439.9	329.7	110.21	3.992		
8,300.0	6,360.0	8,254.7	6,360.0	58.4	57.9	89.87	-406.7	-1,940.4	439.9	324.3	115.62	3.805		
8,400.0	6,360.0	8,354.7	6,360.0	61.1	60.6	89.87	-407.6	-2,040.4	439.9	318.8	121.05	3.634		
8,500.0	6,360.0	8,454.7	6,360.0	63.8	63.3	89.87	-408.6	-2,140.4	439.9	313.4	126.50	3.477		
8,600.0	6,360.0	8,554.7	6,360.0	66.5	66.1	89.87	-409.6	-2,240.4	439.9	307.9	131.96	3.333		
8,700.0	6,360.0	8,654.7	6,360.0	69.2	68.8	89.87	-410.5	-2,340.4	439.9	302.4	137.44	3.200		
8,800.0	6,360.0	8,754.7	6,360.0	71.9	71.6	89.87	-411.5	-2,440.4	439.9	296.9	142.92	3.078		
8,900.0	6,360.0	8,854.7	6,360.0	74.6	74.3	89.87	-412.4	-2,540.4	439.8	291.4	148.41	2.964		
9,000.0	6,360.0	8,954.7	6,360.0	77.4	77.0	89.87	-413.4	-2,640.4	439.8	285.9	153.92	2.858		
9,100.0	6,360.0	9,054.7	6,360.0	80.1	79.8	89.87	-414.4	-2,740.4	439.8	280.4	159.43	2.759		
9,200.0	6,360.0	9,154.7	6,360.0	82.9	82.6	89.87	-415.3	-2,840.4	439.8	274.9	164.94	2.667		
9,300.0	6,360.0	9,254.7	6,360.0	85.6	85.3	89.87	-416.3	-2,940.4	439.8	269.4	170.46	2.580		
9,400.0	6,360.0	9,354.7	6,360.0	88.4	88.1	89.87	-417.2	-3,040.4	439.8	263.8	175.99	2.499		
9,500.0	6,360.0	9,454.7	6,360.0	91.1	90.8	89.87	-418.2	-3,140.4	439.8	258.3	181.52	2.423		
9,600.0	6,360.0	9,554.7	6,360.0	93.9	93.6	89.87	-419.2	-3,240.4	439.8	252.7	187.06	2.351		
9,700.0	6,360.0	9,654.7	6,360.0	96.6	96.4	89.87	-420.1	-3,340.4	439.8	247.2	192.60	2.283		
9,800.0	6,360.0	9,754.7	6,360.0	99.4	99.2	89.87	-421.1	-3,440.3	439.8	241.6	198.15	2.219		
9,900.0	6,360.0	9,854.7	6,360.0	102.2	101.9	89.87	-422.1	-3,540.3	439.8	236.1	203.70	2.159		
10,000.0	6,360.0	9,954.7	6,360.0	104.9	104.7	89.87	-423.0	-3,640.3	439.8	230.5	209.25	2.102		
10,100.0	6,360.0	10,054.7	6,360.0	107.7	107.5	89.87	-424.0	-3,740.3	439.8	224.9	214.80	2.047		
10,200.0	6,360.0	10,154.7	6,360.0	110.5	110.3	89.87	-424.9	-3,840.3	439.7	219.4	220.36	1.996		
10,300.0	6,360.0	10,254.7	6,360.0	113.2	113.0	89.87	-425.9	-3,940.3	439.7	213.8	225.92	1.946		

CC - Min centre to center distance or convergent point, SF - min separation factor, ES - min ellipse separation

<b>Company:</b>	Synergy Resources	<b>Local Co-ordinate Reference:</b>	Well SRC Cannon 14-16CHZ
<b>Project:</b>	SEC.16-T4N-R68W	<b>TVD Reference:</b>	WELL @ 4942.0ft (Original Well Elev)
<b>Reference Site:</b>	SRC Cannon Pad Sec.16-T4N-R68W	<b>MD Reference:</b>	WELL @ 4942.0ft (Original Well Elev)
<b>Site Error:</b>	0.0ft	<b>North Reference:</b>	True
<b>Reference Well:</b>	SRC Cannon 14-16CHZ	<b>Survey Calculation Method:</b>	Minimum Curvature
<b>Well Error:</b>	0.0ft	<b>Output errors are at</b>	2.00 sigma
<b>Reference Wellbore</b>	Wellbore #1	<b>Database:</b>	Landmark
<b>Reference Design:</b>	Plan #1 (10-20-14)	<b>Offset TVD Reference:</b>	Offset Datum

<b>Offset Design</b>												<b>Offset Site Error:</b>	0.0 ft
SRC Cannon Pad Sec.16-T4N-R68W - SRC Cannon 24-16CHZ - Wellbore #1 - Plan #1 (10-20-14)												<b>Offset Well Error:</b>	0.0 ft
Survey Program: 0-MWD													
Reference		Offset		Semi Major Axis			Distance						
Measured Depth (ft)	Vertical Depth (ft)	Measured Depth (ft)	Vertical Depth (ft)	Reference (ft)	Offset (ft)	Highside Toolface (°)	Offset Wellbore Centre +N/-S (ft)	+E/-W (ft)	Between Centres (ft)	Between Ellipses (ft)	Minimum Separation (ft)	Separation Factor	Warning
10,400.0	6,360.0	10,354.7	6,360.0	116.0	115.8	89.87	-426.9	-4,040.3	439.7	208.2	231.48	1.900	
10,500.0	6,360.0	10,454.7	6,360.0	118.8	118.6	89.87	-427.8	-4,140.3	439.7	202.7	237.05	1.855	
10,600.0	6,360.0	10,554.7	6,360.0	121.6	121.4	89.87	-428.8	-4,240.3	439.7	197.1	242.61	1.812	
10,700.0	6,360.0	10,654.7	6,360.0	124.3	124.2	89.87	-429.7	-4,340.3	439.7	191.5	248.18	1.772	
10,800.0	6,360.0	10,754.7	6,360.0	127.1	127.0	89.87	-430.7	-4,440.3	439.7	185.9	253.75	1.733	
10,870.5	6,360.0	10,825.2	6,360.0	129.1	128.7	89.87	-431.4	-4,510.8	439.7	182.3	257.43	1.708	
10,900.0	6,360.0	10,850.2	6,360.0	129.9	129.1	89.87	-431.6	-4,535.8	439.7	181.0	258.70	1.700	
10,900.9	6,360.0	10,850.2	6,360.0	129.9	129.1	89.87	-431.6	-4,535.8	439.7	181.0	258.73	1.700 SF	



<b>Company:</b>	Synergy Resources	<b>Local Co-ordinate Reference:</b>	Well SRC Cannon 14-16CHZ
<b>Project:</b>	SEC.16-T4N-R68W	<b>TVD Reference:</b>	WELL @ 4942.0ft (Original Well Elev)
<b>Reference Site:</b>	SRC Cannon Pad Sec.16-T4N-R68W	<b>MD Reference:</b>	WELL @ 4942.0ft (Original Well Elev)
<b>Site Error:</b>	0.0ft	<b>North Reference:</b>	True
<b>Reference Well:</b>	SRC Cannon 14-16CHZ	<b>Survey Calculation Method:</b>	Minimum Curvature
<b>Well Error:</b>	0.0ft	<b>Output errors are at</b>	2.00 sigma
<b>Reference Wellbore</b>	Wellbore #1	<b>Database:</b>	Landmark
<b>Reference Design:</b>	Plan #1 (10-20-14)	<b>Offset TVD Reference:</b>	Offset Datum

Offset Design													Offset Site Error:	0.0 ft
Survey Program: 0-MWD													Offset Well Error:	0.0 ft
Reference		Offset		Semi Major Axis			Distance							Warning
Measured Depth (ft)	Vertical Depth (ft)	Measured Depth (ft)	Vertical Depth (ft)	Reference (ft)	Offset (ft)	Highside Toolface (°)	Offset Wellbore Centre +N/-S (ft)	+E/-W (ft)	Between Centres (ft)	Between Ellipses (ft)	Minimum Separation (ft)	Separation Factor		
0.0	0.0	1.0	1.0	0.0	0.0	0.00	67.4	0.0	67.4	67.4	0.00	N/A		
100.0	100.0	101.0	101.0	0.1	0.1	0.00	67.4	0.0	67.4	67.2	0.23	296.884		
200.0	200.0	201.0	201.0	0.3	0.3	0.00	67.4	0.0	67.4	66.7	0.68	99.619		
300.0	300.0	301.0	301.0	0.6	0.6	0.00	67.4	0.0	67.4	66.3	1.13	59.851		
400.0	400.0	401.0	401.0	0.8	0.8	0.00	67.4	0.0	67.4	65.8	1.58	42.775 CC, ES		
500.0	500.0	501.0	501.0	1.0	1.0	-164.89	67.4	0.0	69.1	67.1	2.00	34.496		
600.0	599.8	600.8	600.8	1.2	1.2	-165.92	67.4	0.0	74.1	71.7	2.42	30.644		
700.0	699.5	700.5	700.5	1.4	1.5	-167.35	67.4	0.0	82.6	79.8	2.85	29.007		
800.0	798.7	799.7	799.7	1.7	1.7	-168.92	67.4	0.0	94.6	91.3	3.28	28.786		
900.0	897.5	898.5	898.5	2.0	1.9	-170.44	67.4	0.0	110.0	106.2	3.73	29.511		
1,000.0	995.6	996.6	996.6	2.3	2.1	-171.80	67.4	0.0	128.7	124.5	4.17	30.855		
1,100.0	1,093.7	1,094.7	1,094.7	2.7	2.3	-172.89	67.4	0.0	148.4	143.8	4.62	32.094		
1,200.0	1,191.7	1,192.7	1,192.7	3.1	2.6	-173.73	67.4	0.0	168.2	163.1	5.08	33.086		
1,300.0	1,289.7	1,290.7	1,290.7	3.5	2.8	-174.39	67.4	0.0	187.9	182.4	5.54	33.894		
1,400.0	1,387.7	1,388.7	1,388.7	4.0	3.0	-174.93	67.4	0.0	207.7	201.7	6.01	34.563		
1,500.0	1,485.7	1,492.8	1,492.8	4.4	3.2	-175.18	66.3	1.1	226.4	219.9	6.47	35.004		
1,600.0	1,583.7	1,598.7	1,598.6	4.8	3.4	-174.89	62.5	4.8	242.0	235.1	6.91	35.033		
1,700.0	1,681.7	1,705.5	1,705.0	5.2	3.6	-174.13	55.8	11.4	254.7	247.3	7.37	34.566		
1,800.0	1,779.7	1,809.6	1,808.2	5.7	3.9	-173.01	46.8	20.3	264.6	256.7	7.84	33.743		
1,900.0	1,877.7	1,909.0	1,906.8	6.1	4.1	-171.94	37.7	29.2	274.0	265.7	8.32	32.924		
2,000.0	1,975.7	2,008.4	2,005.4	6.6	4.3	-170.95	28.6	38.2	283.6	274.8	8.82	32.160		
2,100.0	2,073.7	2,107.8	2,104.0	7.0	4.6	-170.01	19.5	47.1	293.2	283.9	9.32	31.448		
2,200.0	2,171.7	2,207.3	2,202.6	7.4	4.9	-169.14	10.4	56.1	303.0	293.1	9.84	30.785		
2,300.0	2,269.7	2,306.7	2,301.2	7.9	5.1	-168.32	1.3	65.0	312.7	302.4	10.37	30.167		
2,400.0	2,367.7	2,406.1	2,399.8	8.3	5.4	-167.55	-7.8	74.0	322.6	311.7	10.90	29.591		
2,500.0	2,465.7	2,505.5	2,498.4	8.8	5.7	-166.83	-16.9	82.9	332.5	321.0	11.44	29.053		
2,600.0	2,563.7	2,605.0	2,597.0	9.2	6.0	-166.15	-26.0	91.9	342.4	330.4	11.99	28.551		
2,700.0	2,661.7	2,704.4	2,695.6	9.6	6.3	-165.51	-35.1	100.8	352.4	339.9	12.55	28.082		
2,800.0	2,759.7	2,803.8	2,794.2	10.1	6.6	-164.90	-44.2	109.7	362.4	349.3	13.11	27.644		
2,900.0	2,857.7	2,903.2	2,892.8	10.5	6.9	-164.32	-53.3	118.7	372.5	358.8	13.68	27.233		
3,000.0	2,955.7	3,002.7	2,991.4	11.0	7.2	-163.78	-62.4	127.6	382.6	368.3	14.25	26.847		
3,100.0	3,053.7	3,102.1	3,090.0	11.4	7.5	-163.26	-71.5	136.6	392.7	377.9	14.83	26.486		
3,200.0	3,151.7	3,201.5	3,188.6	11.9	7.8	-162.77	-80.6	145.5	402.9	387.5	15.41	26.146		
3,300.0	3,249.7	3,300.9	3,287.3	12.3	8.1	-162.31	-89.7	154.5	413.1	397.1	16.00	25.826		
3,400.0	3,347.7	3,400.4	3,385.9	12.7	8.4	-161.86	-98.8	163.4	423.3	406.7	16.58	25.525		
3,500.0	3,445.7	3,499.8	3,484.5	13.2	8.8	-161.44	-107.9	172.4	433.6	416.4	17.18	25.240		
3,600.0	3,543.7	3,599.2	3,583.1	13.6	9.1	-161.04	-117.0	181.3	443.8	426.0	17.77	24.972		
3,700.0	3,641.7	3,698.6	3,681.7	14.1	9.4	-160.65	-126.1	190.2	454.1	435.7	18.37	24.718		
3,800.0	3,739.8	3,798.1	3,780.3	14.5	9.7	-160.28	-135.2	199.2	464.4	445.4	18.97	24.478		
3,900.0	3,837.8	3,897.5	3,878.9	15.0	10.0	-159.93	-144.3	208.1	474.7	455.2	19.58	24.251		
4,000.0	3,935.8	3,992.4	3,973.0	15.4	10.3	-159.63	-152.8	216.5	485.3	465.1	20.15	24.079		
4,100.0	4,033.8	4,081.6	4,061.8	15.9	10.5	-159.58	-159.0	222.6	497.6	476.9	20.65	24.094		
4,200.0	4,131.8	4,170.3	4,150.3	16.3	10.7	-159.76	-163.3	226.9	511.9	490.8	21.11	24.251		
4,300.0	4,229.8	4,258.4	4,238.3	16.7	10.9	-160.16	-165.6	229.1	528.2	506.7	21.52	24.541		
4,400.0	4,327.8	4,348.9	4,328.8	17.2	11.0	-160.76	-166.1	229.6	546.5	524.6	21.91	24.939		
4,500.0	4,425.8	4,446.9	4,426.8	17.6	11.2	-161.42	-166.1	229.6	565.3	543.0	22.31	25.345		
4,600.0	4,523.8	4,544.9	4,524.8	18.1	11.4	-162.04	-166.1	229.6	584.2	561.5	22.70	25.734		
4,700.0	4,621.8	4,642.9	4,622.8	18.5	11.5	-162.62	-166.1	229.6	603.2	580.1	23.11	26.107		
4,800.0	4,720.1	4,741.1	4,721.1	18.9	11.7	-163.22	-166.1	229.6	620.9	597.4	23.51	26.404		
4,900.0	4,818.9	4,840.0	4,819.9	19.1	11.9	-163.70	-166.1	229.6	635.3	611.4	23.88	26.599		
5,000.0	4,918.2	4,939.3	4,919.2	19.4	12.1	-164.04	-166.1	229.6	646.4	622.2	24.24	26.672		
5,100.0	5,017.9	5,039.0	5,018.9	19.6	12.2	-164.28	-166.1	229.6	654.2	629.7	24.57	26.630		

CC - Min centre to center distance or convergent point, SF - min separation factor, ES - min ellipse separation



<b>Company:</b>	Synergy Resources	<b>Local Co-ordinate Reference:</b>	Well SRC Cannon 14-16CHZ
<b>Project:</b>	SEC.16-T4N-R68W	<b>TVD Reference:</b>	WELL @ 4942.0ft (Original Well Elev)
<b>Reference Site:</b>	SRC Cannon Pad Sec.16-T4N-R68W	<b>MD Reference:</b>	WELL @ 4942.0ft (Original Well Elev)
<b>Site Error:</b>	0.0ft	<b>North Reference:</b>	True
<b>Reference Well:</b>	SRC Cannon 14-16CHZ	<b>Survey Calculation Method:</b>	Minimum Curvature
<b>Well Error:</b>	0.0ft	<b>Output errors are at</b>	2.00 sigma
<b>Reference Wellbore</b>	Wellbore #1	<b>Database:</b>	Landmark
<b>Reference Design:</b>	Plan #1 (10-20-14)	<b>Offset TVD Reference:</b>	Offset Datum

Offset Design												Offset Site Error:	0.0 ft
Survey Program: 0-MWD												Offset Well Error:	0.0 ft
Reference		Offset		Semi Major Axis			Distance						Warning
Measured Depth (ft)	Vertical Depth (ft)	Measured Depth (ft)	Vertical Depth (ft)	Reference (ft)	Offset (ft)	Highside Toolface (°)	Offset Wellbore Centre +N/-S (ft)	+E/-W (ft)	Between Centres (ft)	Between Ellipses (ft)	Minimum Separation (ft)	Separation Factor	
5,200.0	5,117.8	5,138.9	5,118.8	19.7	12.4	-164.41	-166.1	229.6	658.7	633.8	24.87	26.480	
5,300.0	5,217.8	5,238.9	5,218.8	19.8	12.6	0.06	-166.1	229.6	659.8	628.5	31.29	21.089	
5,400.0	5,317.8	5,338.9	5,318.8	19.9	12.8	0.06	-166.1	229.6	659.8	628.2	31.58	20.892	
5,500.0	5,417.8	5,438.9	5,418.8	20.0	13.0	0.06	-166.1	229.6	659.8	627.9	31.88	20.697	
5,600.0	5,517.8	5,539.1	5,519.0	20.1	13.2	0.02	-166.1	229.2	659.8	627.6	32.18	20.503	
5,674.9	5,592.7	5,614.1	5,593.7	20.2	13.3	-0.55	-166.2	222.6	659.8	627.3	32.44	20.339	
5,700.0	5,617.8	5,638.8	5,618.1	20.2	13.3	-0.88	-166.2	218.7	659.8	627.2	32.53	20.281	
5,800.0	5,717.7	5,734.9	5,711.3	20.3	13.4	87.95	-166.4	195.8	660.2	633.7	26.52	24.893	
5,900.0	5,816.1	5,828.4	5,798.3	20.4	13.4	86.25	-166.8	161.6	661.2	634.7	26.55	24.908	
6,000.0	5,911.2	5,919.8	5,878.3	20.4	13.5	84.63	-167.2	117.6	662.8	636.2	26.60	24.913	
6,100.0	6,001.0	6,009.2	5,950.6	20.5	13.5	83.13	-167.7	65.0	664.7	637.9	26.78	24.817	
6,200.0	6,083.9	6,100.0	6,016.7	20.5	13.6	81.72	-168.3	2.9	666.8	639.6	27.20	24.512	
6,300.0	6,158.3	6,183.5	6,070.0	20.5	13.9	80.54	-168.9	-61.2	669.0	641.1	27.96	23.927	
6,400.0	6,222.6	6,268.7	6,116.5	20.5	14.7	79.48	-169.6	-132.7	671.2	642.0	29.17	23.010	
6,500.0	6,275.7	6,350.0	6,152.5	20.6	15.6	78.63	-170.3	-205.5	673.1	642.3	30.84	21.823	
6,600.0	6,316.5	6,436.7	6,181.6	20.9	17.0	77.93	-171.0	-287.1	674.7	641.6	33.14	20.358	
6,700.0	6,344.1	6,519.8	6,200.1	21.4	18.4	77.45	-171.8	-368.0	675.9	640.1	35.88	18.838	
6,800.0	6,358.2	6,600.0	6,208.9	22.4	20.0	77.17	-172.6	-447.7	676.7	637.7	38.97	17.365	
6,900.0	6,360.0	6,694.9	6,210.0	23.9	22.0	77.11	-173.5	-542.5	676.8	634.1	42.75	15.832	
7,000.0	6,360.0	6,794.9	6,210.0	25.8	24.2	77.11	-174.4	-642.5	676.8	629.8	47.02	14.394	
7,100.0	6,360.0	6,894.9	6,210.0	28.0	26.5	77.11	-175.4	-742.5	676.8	625.3	51.52	13.137	
7,200.0	6,360.0	6,994.9	6,210.0	30.2	28.9	77.11	-176.3	-842.5	676.8	620.6	56.19	12.044	
7,300.0	6,360.0	7,094.9	6,210.0	32.6	31.4	77.11	-177.3	-942.5	676.8	615.8	61.00	11.095	
7,400.0	6,360.0	7,194.9	6,210.0	35.0	33.9	77.11	-178.2	-1,042.5	676.8	610.9	65.91	10.268	
7,500.0	6,360.0	7,294.9	6,210.0	37.5	36.5	77.11	-179.2	-1,142.5	676.8	605.9	70.91	9.545	
7,600.0	6,360.0	7,394.9	6,210.0	40.0	39.1	77.11	-180.2	-1,242.5	676.8	600.8	75.97	8.908	
7,700.0	6,360.0	7,494.9	6,210.0	42.5	41.7	77.11	-181.1	-1,342.5	676.8	595.7	81.09	8.346	
7,800.0	6,360.0	7,594.9	6,210.0	45.1	44.4	77.11	-182.1	-1,442.5	676.8	590.5	86.25	7.847	
7,900.0	6,360.0	7,694.9	6,210.0	47.7	47.1	77.11	-183.0	-1,542.5	676.8	585.3	91.45	7.401	
8,000.0	6,360.0	7,794.9	6,210.0	50.4	49.7	77.11	-184.0	-1,642.5	676.8	580.1	96.68	7.000	
8,100.0	6,360.0	7,894.9	6,210.0	53.0	52.4	77.11	-184.9	-1,742.5	676.8	574.9	101.94	6.639	
8,200.0	6,360.0	7,994.9	6,210.0	55.7	55.1	77.11	-185.9	-1,842.5	676.8	569.6	107.22	6.312	
8,300.0	6,360.0	8,094.9	6,210.0	58.4	57.9	77.11	-186.8	-1,942.5	676.8	564.3	112.51	6.015	
8,400.0	6,360.0	8,194.9	6,210.0	61.1	60.6	77.11	-187.8	-2,042.5	676.8	559.0	117.83	5.744	
8,500.0	6,360.0	8,294.9	6,210.0	63.8	63.3	77.11	-188.7	-2,142.5	676.8	553.6	123.16	5.495	
8,600.0	6,360.0	8,394.9	6,210.0	66.5	66.1	77.11	-189.7	-2,242.5	676.8	548.3	128.50	5.267	
8,700.0	6,360.0	8,494.9	6,210.0	69.2	68.8	77.11	-190.7	-2,342.5	676.8	542.9	133.85	5.056	
8,800.0	6,360.0	8,594.9	6,210.0	71.9	71.5	77.11	-191.6	-2,442.5	676.8	537.6	139.22	4.861	
8,900.0	6,360.0	8,694.9	6,210.0	74.6	74.3	77.11	-192.6	-2,542.5	676.8	532.2	144.59	4.681	
9,000.0	6,360.0	8,794.9	6,210.0	77.4	77.1	77.11	-193.5	-2,642.5	676.8	526.8	149.97	4.513	
9,100.0	6,360.0	8,894.9	6,210.0	80.1	79.8	77.11	-194.5	-2,742.4	676.8	521.4	155.35	4.356	
9,200.0	6,360.0	8,994.9	6,210.0	82.9	82.6	77.11	-195.4	-2,842.4	676.8	516.0	160.75	4.210	
9,300.0	6,360.0	9,094.9	6,210.0	85.6	85.3	77.11	-196.4	-2,942.4	676.8	510.6	166.15	4.073	
9,400.0	6,360.0	9,194.9	6,210.0	88.4	88.1	77.11	-197.3	-3,042.4	676.8	505.2	171.55	3.945	
9,500.0	6,360.0	9,294.9	6,210.0	91.1	90.9	77.11	-198.3	-3,142.4	676.8	499.8	176.96	3.825	
9,600.0	6,360.0	9,394.9	6,210.0	93.9	93.6	77.11	-199.2	-3,242.4	676.8	494.4	182.37	3.711	
9,700.0	6,360.0	9,494.9	6,210.0	96.6	96.4	77.11	-200.2	-3,342.4	676.8	489.0	187.79	3.604	
9,800.0	6,360.0	9,594.9	6,210.0	99.4	99.2	77.11	-201.2	-3,442.4	676.8	483.6	193.21	3.503	
9,900.0	6,360.0	9,694.9	6,210.0	102.2	102.0	77.11	-202.1	-3,542.4	676.8	478.1	198.63	3.407	
10,000.0	6,360.0	9,794.9	6,210.0	104.9	104.7	77.11	-203.1	-3,642.4	676.8	472.7	204.06	3.317	
10,100.0	6,360.0	9,894.9	6,210.0	107.7	107.5	77.11	-204.0	-3,742.4	676.8	467.3	209.49	3.231	
10,200.0	6,360.0	9,994.9	6,210.0	110.5	110.3	77.11	-205.0	-3,842.4	676.8	461.9	214.92	3.149	

CC - Min centre to center distance or convergent point, SF - min separation factor, ES - min ellipse separation

<b>Company:</b>	Synergy Resources	<b>Local Co-ordinate Reference:</b>	Well SRC Cannon 14-16CHZ
<b>Project:</b>	SEC.16-T4N-R68W	<b>TVD Reference:</b>	WELL @ 4942.0ft (Original Well Elev)
<b>Reference Site:</b>	SRC Cannon Pad Sec.16-T4N-R68W	<b>MD Reference:</b>	WELL @ 4942.0ft (Original Well Elev)
<b>Site Error:</b>	0.0ft	<b>North Reference:</b>	True
<b>Reference Well:</b>	SRC Cannon 14-16CHZ	<b>Survey Calculation Method:</b>	Minimum Curvature
<b>Well Error:</b>	0.0ft	<b>Output errors are at</b>	2.00 sigma
<b>Reference Wellbore</b>	Wellbore #1	<b>Database:</b>	Landmark
<b>Reference Design:</b>	Plan #1 (10-20-14)	<b>Offset TVD Reference:</b>	Offset Datum

<b>Offset Design</b>												<b>Offset Site Error:</b>	0.0 ft
SRC Cannon Pad Sec.16-T4N-R68W - SRC Cannon 24-16NHZ - Wellbore #1 - Plan #1 (10-20-14)												<b>Offset Well Error:</b>	0.0 ft
Survey Program: 0-MWD													
Reference		Offset		Semi Major Axis			Distance						
Measured Depth (ft)	Vertical Depth (ft)	Measured Depth (ft)	Vertical Depth (ft)	Reference (ft)	Offset (ft)	Highside Toolface (°)	Offset Wellbore Centre +N/-S (ft)	+E/-W (ft)	Between Centres (ft)	Between Ellipses (ft)	Minimum Separation (ft)	Separation Factor	Warning
10,300.0	6,360.0	10,094.9	6,210.0	113.2	113.1	77.11	-205.9	-3,942.4	676.8	456.4	220.35	3.071	
10,400.0	6,360.0	10,194.9	6,210.0	116.0	115.9	77.11	-206.9	-4,042.4	676.8	451.0	225.79	2.997	
10,500.0	6,360.0	10,294.9	6,210.0	118.8	118.7	77.11	-207.8	-4,142.4	676.8	445.5	231.23	2.927	
10,600.0	6,360.0	10,394.9	6,210.0	121.6	121.4	77.11	-208.8	-4,242.4	676.8	440.1	236.67	2.860	
10,700.0	6,360.0	10,494.9	6,210.0	124.3	124.2	77.11	-209.7	-4,342.4	676.8	434.7	242.11	2.795	
10,800.0	6,360.0	10,594.9	6,210.0	127.1	127.0	77.11	-210.7	-4,442.4	676.8	429.2	247.56	2.734	
10,869.5	6,360.0	10,664.3	6,210.0	129.0	129.0	77.11	-211.4	-4,511.8	676.8	425.4	251.34	2.693	
10,900.0	6,360.0	10,688.5	6,210.0	129.9	129.6	77.11	-211.6	-4,536.0	676.8	424.0	252.82	2.677	
10,900.9	6,360.0	10,688.5	6,210.0	129.9	129.6	77.11	-211.6	-4,536.0	676.8	424.0	252.85	2.677 SF	

Reference Depths are relative to WELL @ 4942.0ft (Original Well Elev)Coordinates are relative to: SRC Cannon 14-16CHZ  
Offset Depths are relative to Offset DatumCoordinate System is US State Plane 1983, Colorado Northern Zone  
Central Meridian is -105.500000 °Grid Convergence at Surface is: 0.32°



<b>Company:</b>	Synergy Resources	<b>Local Co-ordinate Reference:</b>	Well SRC Cannon 14-16CHZ
<b>Project:</b>	SEC.16-T4N-R68W	<b>TVD Reference:</b>	WELL @ 4942.0ft (Original Well Elev)
<b>Reference Site:</b>	SRC Cannon Pad Sec.16-T4N-R68W	<b>MD Reference:</b>	WELL @ 4942.0ft (Original Well Elev)
<b>Site Error:</b>	0.0ft	<b>North Reference:</b>	True
<b>Reference Well:</b>	SRC Cannon 14-16CHZ	<b>Survey Calculation Method:</b>	Minimum Curvature
<b>Well Error:</b>	0.0ft	<b>Output errors are at</b>	2.00 sigma
<b>Reference Wellbore</b>	Wellbore #1	<b>Database:</b>	Landmark
<b>Reference Design:</b>	Plan #1 (10-20-14)	<b>Offset TVD Reference:</b>	Offset Datum

Reference Depths are relative to WELL @ 4942.0ft (Original Well Elev) Coordinates are relative to: SRC Cannon 14-16CHZ  
 Offset Depths are relative to Offset Datum Coordinate System is US State Plane 1983, Colorado Northern Zone  
 Central Meridian is -105.500000 ° Grid Convergence at Surface is: 0.32°

