

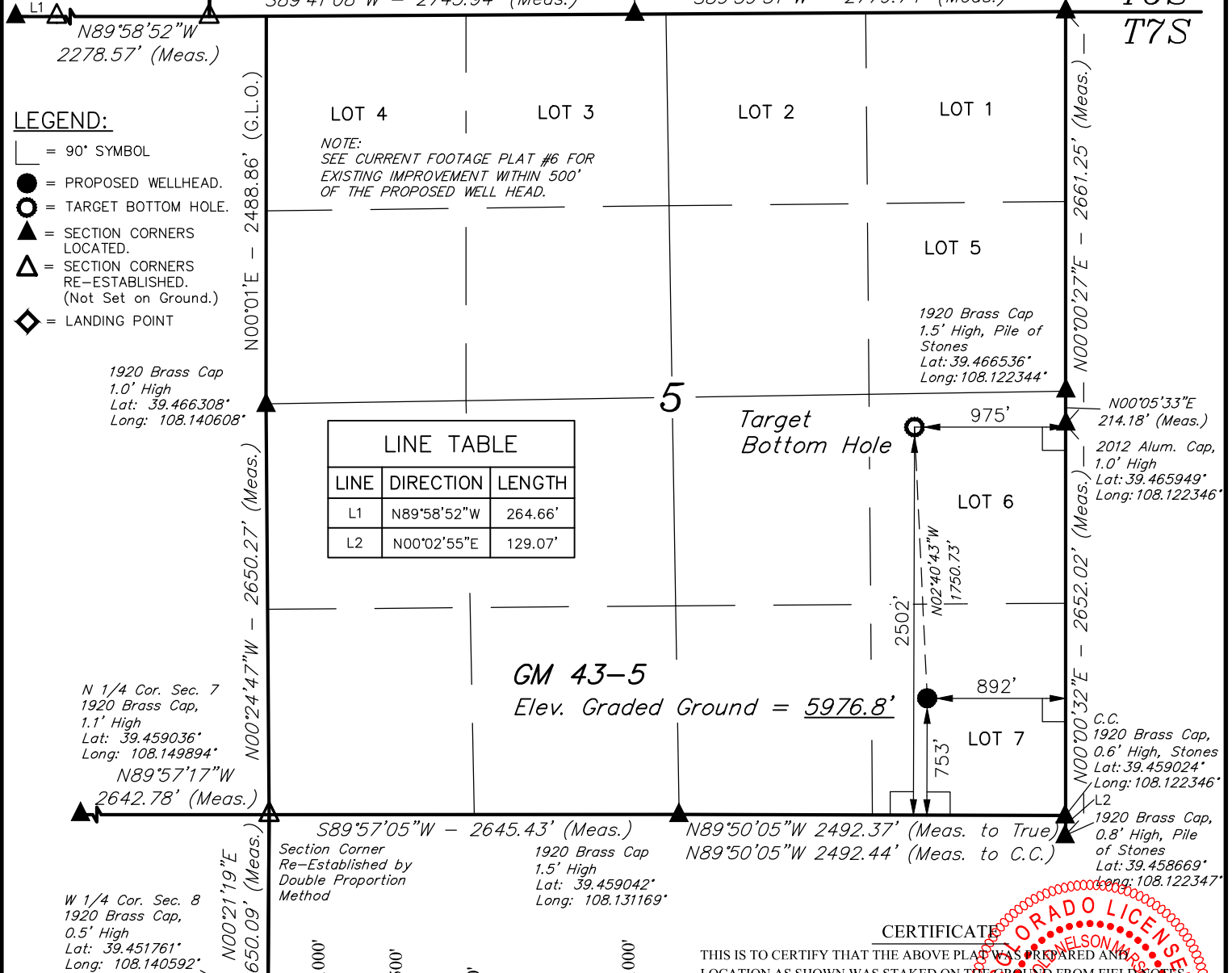
T7S, R96W, 6th P.M.

W.C. 1912 Brass  
Cap, 0.7' High  
Lat: 39.473161°  
Long: 108.150919°  
True Position

Section Corner  
Re-Established by  
Single Proportion  
Method (Not Set)

1912 Brass Cap  
0.9' High  
Lat: 39.473206°  
Long: 108.132189°

1912 Brass Cap  
1.4' High, Pile of  
Stones, Steel Rod  
Lat: 39.473253°  
Long: 108.122347°



PDOP = 1.3

NAD 83 (TARGET BOTTOM HOLE)	NAD 83 (SURFACE LOCATION)
LATITUDE = 39°27'57.24" (39.465900)	LATITUDE = 39°27'39.96" (39.461100)
LONGITUDE = 108°07'32.87" (108.125797)	LONGITUDE = 108°07'31.82" (108.125506)
STATE PLANE NAD 83 COLO. CENT.	STATE PLANE NAD 83 COLO. CENT.
N: 1605295.46 E: 2258785.30	N: 1603545.57 E: 2258816.87

**CERTIFICATE**

THIS IS TO CERTIFY THAT THE ABOVE PLAT WAS PREPARED AND LOCATION AS SHOWN WAS STAKED ON THE GROUND FROM FIELD NOTES OF ACTUAL SURVEYS MADE BY ME OR UNDER MY SUPERVISION AND THAT THE SAME ARE TRUE AND CORRECT TO THE BEST OF MY KNOWLEDGE AND BELIEF.

*Handwritten Signature: Harold Marshall*

REGISTERED LAND SURVEYOR  
REGISTRATION NO. 10150  
STATE OF COLORADO 08-15-14

**BASIS OF BEARINGS**  
BASIS OF BEARINGS IS A G.P.S. OBSERVATION

**BASIS OF ELEVATION**

SPOT ELEVATION AT THE NORTHWEST CORNER OF SECTION 30, T5S, R95W, 6th P.M., TAKEN FROM THE FORKED GULCH, QUADRANGLE, COLORADO, GARFIELD COUNTY, 7.5 MINUTE QUAD. (TOPOGRAPHIC MAP) PUBLISHED BY THE UNITED STATES DEPARTMENT OF THE INTERIOR, GEOLOGICAL SURVEY. SAID ELEVATION IS MARKED AS BEING 5966 FEET.

**WPX Energy Rocky Mountain, LLC**

**GM 43-5**  
**LOT 7, SECTION 5, T7S, R96W, 6th P.M.**  
**GARFIELD COUNTY, COLORADO**

SURVEYED BY: BRIAN BAKER, J.B.	DATE: 05-08-13
DRAWN BY: M.D.	DATE DRAWN: 07-31-14
SCALE: 1" = 1000'	REVISED: 08-11-14 M.D.

**WELL LOCATION PLAT**



**UELS, LLC**  
Corporate Office \* 85 South 200 East  
Vernal, UT 84078 \* (435) 789-1017

