

Location:	COLORADO	Slot:	SLOT#28 VOGL 34N-35HZ (526'FSL & 711'FWL, SEC.36)
Field:	WELD COUNTY (KERR MCGEE)	Well:	VOGL 34N-35HZ
Facility:	SEC.36-T3N-R68W	Wellbore:	VOGL 34N-35HZ PWB

Plot reference wellpath is VOGL 34N-35HZ (REV-A.0) PWP

True vertical depths are referenced to XTREME 20 (16'KB) (RKB)

Grid System: NAD83 / Lambert Colorado SP, Northern Zone (501), US feet

Measured depths are referenced to XTREME 20 (16'KB) (RKB)

North Reference: True north

XTREME 20 (16KB) (RKB) to Mean Sea Level: 4834 feet

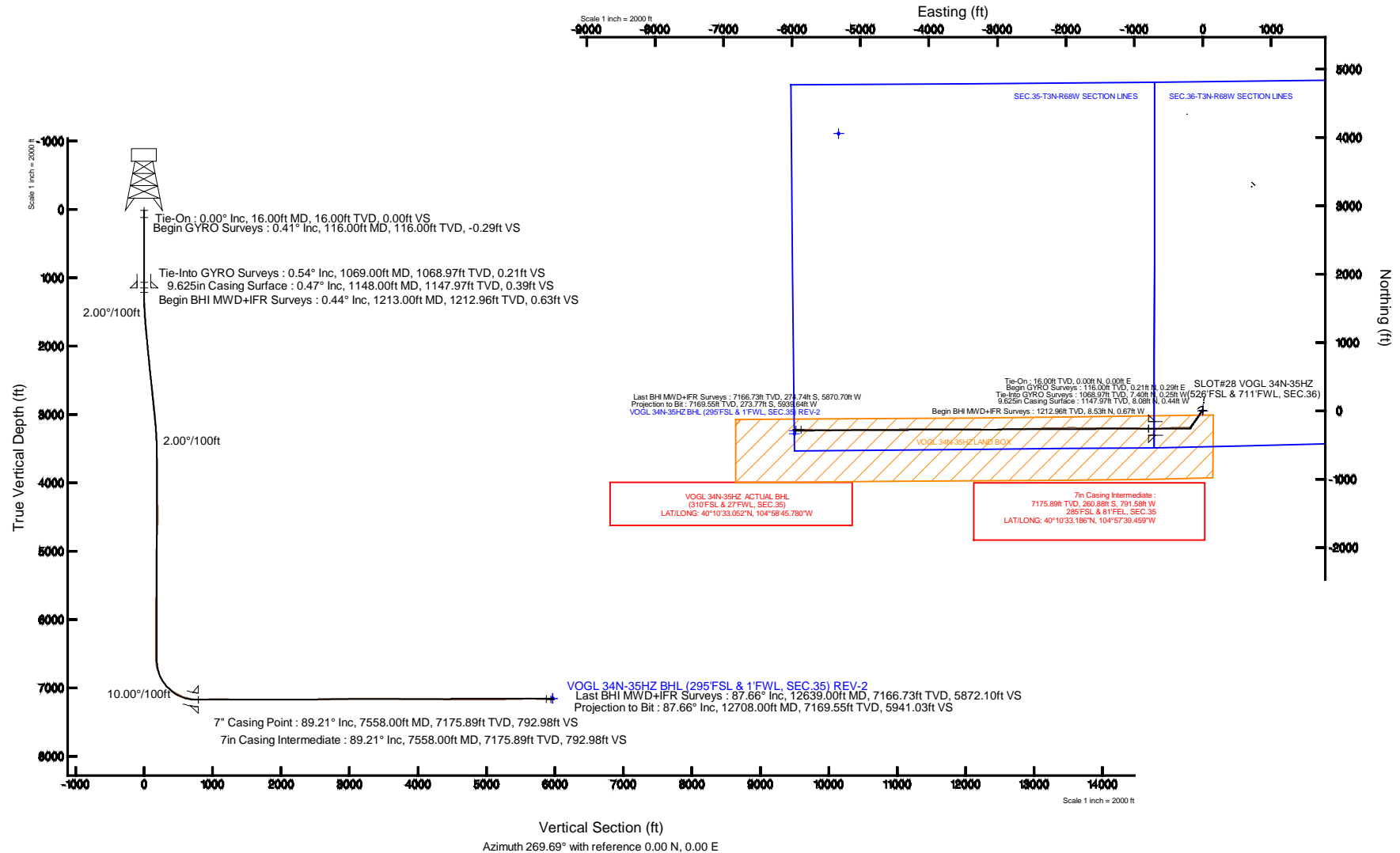
Scale: True distance

Mean Sea Level to Mud line (At Slot: SLOT#28 VOGL 34N-35HZ (526'FSL & 711'FWL, SEC.36)): 0 feet

Depths are in feet

Coordinates are in feet referenced to Slope

Created by: precain on 14/Oct/2014



# Actual Wellpath Report

VOGL 34N-35HZ AWP

Page 1 of 7

## REFERENCE WELLPATH IDENTIFICATION

Operator	KERR-MCGEE OIL & GAS ONSHORE LP	Slot	SLOT#28 VOGL 34N-35HZ (526'FSL & 711'FWL, SEC.36)
Area	COLORADO	Well	VOGL 34N-35HZ
Field	WELD COUNTY (KERR MCGEE)	Wellbore	VOGL 34N-35HZ AWB
Facility	SEC.36-T3N-R68W		

## REPORT SETUP INFORMATION

Projection System	NAD83 / Lambert Colorado SP, Northern Zone (501), US feet	Software System	WellArchitect@ 4.0.0
North Reference	True	User	Precain
Scale	0.999958	Report Generated	14/Oct/2014 at 13:56
Convergence at slot	n/a	Database/Source file	WellArchitectDB/VOGL_34N-35HZ_AWB.xml

## WELLPATH LOCATION

	Local coordinates		Grid coordinates		Geographic coordinates	
	North[ft]	East[ft]	Easting[US ft]	Northing[US ft]	Latitude	Longitude
Slot Location	-119.21	-10.25	3151413.31	1307641.28	40°10'35.764"N	104°57'29.261"W
Facility Reference Pt			3151422.83	1307760.54	40°10'36.942"N	104°57'29.129"W
Field Reference Pt			3197771.84	1268891.29	40°04'09.600"N	104°47'36.000"W

## WELLPATH DATUM

Calculation method	Minimum curvature	XTREME 20 (16'KB) (RKB) to Facility Vertical Datum	4834.00ft
Horizontal Reference Pt	Slot	XTREME 20 (16'KB) (RKB) to Mean Sea Level	4834.00ft
Vertical Reference Pt	XTREME 20 (16'KB) (RKB)	XTREME 20 (16'KB) (RKB) to Mud Line at Slot (SLOT#28 VOGL 34N-35HZ (526'FSL & 711'FWL, SEC.36))	4834.00ft
MD Reference Pt	XTREME 20 (16'KB) (RKB)	Section Origin	N 0.00, E 0.00 ft
Field Vertical Reference	Mean Sea Level	Section Azimuth	269.69°

REFERENCE WELLPATH IDENTIFICATION			
Operator	KERR-MCGEE OIL & GAS ONSHORE LP	Slot	SLOT#28 VOGL 34N-35HZ (526'FSL & 711'FWL, SEC.36)
Area	COLORADO	Well	VOGL 34N-35HZ
Field	WELD COUNTY (KERR MCGEE)	Wellbore	VOGL 34N-35HZ AWB
Facility	SEC.36-T3N-R68W		

WELLPATH DATA (142 stations) † = interpolated/extrapolated station										
MD [ft]	Inclination [°]	Azimuth [°]	TVD [ft]	Vert Sect [ft]	North [ft]	East [ft]	Latitude	Longitude	DLS [°/100ft]	Comments
0.00†	0.000	53.820	0.00	0.00	0.00	0.00	40°10'35.764"N	104°57'29.261"W	0.00	
16.00	0.000	53.820	16.00	0.00	0.00	0.00	40°10'35.764"N	104°57'29.261"W	0.00	Tie-On
116.00	0.410	53.820	116.00	-0.29	0.21	0.29	40°10'35.766"N	104°57'29.257"W	0.41	Begin GYRO Surveys
216.00	0.410	18.730	216.00	-0.70	0.76	0.69	40°10'35.772"N	104°57'29.252"W	0.25	
316.00	0.350	27.920	315.99	-0.96	1.37	0.95	40°10'35.778"N	104°57'29.249"W	0.09	
416.00	0.520	348.610	415.99	-1.02	2.08	1.00	40°10'35.785"N	104°57'29.248"W	0.33	
516.00	0.530	341.390	515.99	-0.78	2.97	0.77	40°10'35.793"N	104°57'29.251"W	0.07	
616.00	0.570	347.870	615.98	-0.54	3.89	0.51	40°10'35.802"N	104°57'29.254"W	0.07	
716.00	0.390	356.430	715.98	-0.41	4.72	0.39	40°10'35.811"N	104°57'29.256"W	0.19	
816.00	0.500	344.690	815.98	-0.28	5.48	0.25	40°10'35.818"N	104°57'29.258"W	0.14	
916.00	0.420	341.790	915.97	-0.06	6.25	0.02	40°10'35.826"N	104°57'29.261"W	0.08	
1016.00	0.430	348.000	1015.97	0.13	6.96	-0.17	40°10'35.833"N	104°57'29.263"W	0.05	
1069.00	0.540	350.410	1068.97	0.21	7.40	-0.25	40°10'35.837"N	104°57'29.264"W	0.21	Tie-Into GYRO Surveys
1213.00	0.440	326.320	1212.96	0.63	8.53	-0.67	40°10'35.848"N	104°57'29.270"W	0.16	Begin BHI MWD+IFR Surveys
1307.00	2.090	225.430	1306.94	2.05	7.63	-2.09	40°10'35.839"N	104°57'29.288"W	2.36	
1401.00	4.420	226.440	1400.78	5.92	3.93	-5.94	40°10'35.803"N	104°57'29.338"W	2.48	
1495.00	5.060	223.110	1494.46	11.41	-1.59	-11.40	40°10'35.748"N	104°57'29.408"W	0.74	
1589.00	6.990	211.690	1587.94	17.29	-9.49	-17.24	40°10'35.670"N	104°57'29.483"W	2.41	
1682.00	7.850	214.850	1680.16	23.94	-19.51	-23.84	40°10'35.571"N	104°57'29.568"W	1.02	
1776.00	8.540	210.190	1773.20	31.18	-30.81	-31.02	40°10'35.459"N	104°57'29.661"W	1.02	
1870.00	9.190	209.130	1866.08	38.41	-43.40	-38.18	40°10'35.335"N	104°57'29.753"W	0.71	
1964.00	9.450	211.730	1958.84	46.20	-56.52	-45.89	40°10'35.205"N	104°57'29.852"W	0.53	
2058.00	9.630	217.690	2051.54	55.13	-69.31	-54.76	40°10'35.079"N	104°57'29.966"W	1.07	
2152.00	8.600	215.190	2144.35	64.05	-81.28	-63.62	40°10'34.961"N	104°57'30.081"W	1.17	
2247.00	9.690	208.990	2238.15	72.09	-94.07	-71.58	40°10'34.834"N	104°57'30.183"W	1.55	
2342.00	10.280	216.990	2331.71	81.14	-107.84	-80.56	40°10'34.698"N	104°57'30.299"W	1.59	
2436.00	11.200	216.250	2424.07	91.66	-121.90	-91.01	40°10'34.559"N	104°57'30.433"W	0.99	
2530.00	11.810	216.480	2516.18	102.86	-137.00	-102.12	40°10'34.410"N	104°57'30.577"W	0.65	
2624.00	11.550	216.870	2608.23	114.31	-152.26	-113.49	40°10'34.259"N	104°57'30.723"W	0.29	
2718.00	10.010	218.010	2700.57	125.06	-166.23	-124.17	40°10'34.121"N	104°57'30.861"W	1.65	
2813.00	8.730	220.170	2794.30	134.86	-178.24	-133.90	40°10'34.003"N	104°57'30.986"W	1.40	
2906.00	9.300	220.140	2886.15	144.32	-189.38	-143.30	40°10'33.893"N	104°57'31.107"W	0.61	
2994.00	9.650	213.850	2972.95	153.07	-200.94	-151.99	40°10'33.778"N	104°57'31.219"W	1.24	
3079.00	8.460	214.440	3056.89	160.64	-212.01	-159.50	40°10'33.669"N	104°57'31.316"W	1.40	
3164.00	8.440	209.850	3140.97	167.33	-222.58	-166.14	40°10'33.564"N	104°57'31.401"W	0.79	
3249.00	7.730	207.570	3225.12	173.14	-233.06	-171.89	40°10'33.461"N	104°57'31.475"W	0.92	
3334.00	5.650	211.660	3309.54	178.03	-241.69	-176.73	40°10'33.376"N	104°57'31.538"W	2.51	
3419.00	4.980	216.590	3394.18	182.46	-248.21	-181.12	40°10'33.311"N	104°57'31.594"W	0.95	
3504.00	3.300	209.000	3478.95	185.87	-253.32	-184.51	40°10'33.261"N	104°57'31.638"W	2.07	
3590.00	2.010	201.720	3564.86	187.65	-256.88	-186.27	40°10'33.225"N	104°57'31.661"W	1.55	
3675.00	1.560	230.870	3649.82	189.11	-259.00	-187.72	40°10'33.205"N	104°57'31.679"W	1.17	
3760.00	0.500	328.260	3734.81	190.21	-259.41	-188.81	40°10'33.200"N	104°57'31.693"W	2.00	
3845.00	0.620	302.700	3819.80	190.79	-258.85	-189.39	40°10'33.206"N	104°57'31.701"W	0.32	
4015.00	0.430	284.710	3989.80	192.17	-258.19	-190.78	40°10'33.213"N	104°57'31.719"W	0.15	
4270.00	1.010	290.170	4244.77	195.20	-257.17	-193.82	40°10'33.223"N	104°57'31.758"W	0.23	

# Actual Wellpath Report

VOGL 34N-35HZ AWP

Page 3 of 7

REFERENCE WELLPATH IDENTIFICATION			
Operator	KERR-MCGEE OIL & GAS ONSHORE LP	Slot	SLOT#28 VOGL 34N-35HZ (526'FSL & 711'FWL, SEC.36)
Area	COLORADO	Well	VOGL 34N-35HZ
Field	WELD COUNTY (KERR MCGEE)	Wellbore	VOGL 34N-35HZ AWB
Facility	SEC.36-T3N-R68W		

## WELLPATH DATA (142 stations) † = interpolated/extrapolated station

MD [ft]	Inclination [°]	Azimuth [°]	TVD [ft]	Vert Sect [ft]	North [ft]	East [ft]	Latitude	Longitude	DLS [°/100ft]	Comments
4440.00	1.490	288.190	4414.73	198.70	-255.96	-197.32	40°10'33.235"N	104°57'31.803"W	0.28	
4525.00	0.620	20.580	4499.72	199.59	-255.19	-198.21	40°10'33.242"N	104°57'31.815"W	1.93	
4610.00	2.220	81.040	4584.70	197.79	-254.50	-196.43	40°10'33.249"N	104°57'31.791"W	2.34	
4696.00	3.090	85.230	4670.60	193.84	-254.05	-192.47	40°10'33.253"N	104°57'31.741"W	1.04	
4781.00	2.730	87.460	4755.49	189.53	-253.77	-188.16	40°10'33.256"N	104°57'31.685"W	0.44	
4950.00	1.830	80.760	4924.36	182.84	-253.16	-181.48	40°10'33.262"N	104°57'31.599"W	0.55	
5121.00	0.960	69.030	5095.31	178.81	-252.21	-177.45	40°10'33.272"N	104°57'31.547"W	0.53	
5291.00	0.580	80.700	5265.29	176.62	-251.56	-175.27	40°10'33.278"N	104°57'31.519"W	0.24	
5546.00	0.060	180.330	5520.29	175.35	-251.48	-174.00	40°10'33.279"N	104°57'31.503"W	0.23	
5801.00	1.210	113.080	5775.27	172.88	-252.67	-171.52	40°10'33.267"N	104°57'31.471"W	0.47	
5971.00	0.500	81.530	5945.25	170.50	-253.27	-169.13	40°10'33.261"N	104°57'31.440"W	0.49	
6140.00	0.640	189.980	6114.24	169.94	-254.09	-168.57	40°10'33.253"N	104°57'31.433"W	0.55	
6310.00	1.310	348.020	6284.23	170.50	-253.12	-169.14	40°10'33.263"N	104°57'31.440"W	1.13	
6481.00	1.000	329.080	6455.20	171.65	-249.93	-170.31	40°10'33.294"N	104°57'31.455"W	0.29	
6566.00	0.870	312.180	6540.19	172.51	-248.86	-171.17	40°10'33.305"N	104°57'31.466"W	0.36	
6609.00	0.930	290.180	6583.18	173.08	-248.52	-171.74	40°10'33.308"N	104°57'31.473"W	0.81	
6651.00	4.160	276.310	6625.13	174.91	-248.23	-173.57	40°10'33.311"N	104°57'31.497"W	7.77	
6694.00	10.130	282.100	6667.78	180.16	-247.27	-178.83	40°10'33.320"N	104°57'31.565"W	13.97	
6736.00	14.530	274.430	6708.80	189.02	-246.09	-187.69	40°10'33.332"N	104°57'31.679"W	11.16	
6779.00	16.730	273.100	6750.21	200.57	-245.34	-199.25	40°10'33.340"N	104°57'31.828"W	5.18	
6821.00	19.560	272.110	6790.12	213.64	-244.75	-212.32	40°10'33.345"N	104°57'31.996"W	6.78	
6864.00	25.410	272.910	6829.83	230.05	-244.02	-228.74	40°10'33.353"N	104°57'32.208"W	13.62	
6906.00	30.740	271.550	6866.88	249.79	-243.27	-248.48	40°10'33.360"N	104°57'32.462"W	12.78	
6949.00	35.270	270.150	6902.93	273.20	-242.94	-271.90	40°10'33.363"N	104°57'32.764"W	10.68	
6992.00	38.290	269.090	6937.37	298.94	-243.12	-297.64	40°10'33.361"N	104°57'33.095"W	7.18	
7035.00	42.390	267.640	6970.14	326.76	-243.93	-325.45	40°10'33.353"N	104°57'33.454"W	9.78	
7077.00	46.410	267.470	7000.14	356.12	-245.18	-354.81	40°10'33.341"N	104°57'33.832"W	9.58	
7120.00	51.960	267.710	7028.23	388.63	-246.55	-387.31	40°10'33.328"N	104°57'34.251"W	12.91	
7162.00	55.810	267.510	7052.98	422.53	-247.96	-421.20	40°10'33.314"N	104°57'34.687"W	9.17	
7205.00	59.060	267.040	7076.13	458.74	-249.69	-457.40	40°10'33.297"N	104°57'35.154"W	7.61	
7247.00	61.140	266.110	7097.06	495.09	-251.87	-493.74	40°10'33.275"N	104°57'35.622"W	5.31	
7290.00	65.640	266.260	7116.32	533.45	-254.42	-532.09	40°10'33.250"N	104°57'36.116"W	10.47	
7332.00	69.680	267.060	7132.28	572.24	-256.68	-570.86	40°10'33.227"N	104°57'36.615"W	9.78	
7375.00	74.650	269.110	7145.44	613.14	-258.04	-611.76	40°10'33.214"N	104°57'37.142"W	12.42	
7417.00	75.450	268.600	7156.28	653.71	-258.85	-652.33	40°10'33.206"N	104°57'37.665"W	2.24	
7460.00	79.040	268.580	7165.77	695.64	-259.88	-694.25	40°10'33.196"N	104°57'38.205"W	8.35	
7507.00	83.800	269.320	7172.78	742.09	-260.73	-740.70	40°10'33.187"N	104°57'38.803"W	10.25	
7558.00†	89.210	270.330	7175.89	792.98	-260.88	-791.58	40°10'33.186"N	104°57'39.459"W	10.79	7" Casing Point
7599.00	93.560	271.140	7174.90	833.95	-260.36	-832.56	40°10'33.191"N	104°57'39.987"W	10.79	
7684.00	93.140	271.600	7169.93	918.77	-258.33	-917.39	40°10'33.211"N	104°57'41.079"W	0.73	
7769.00	91.660	271.280	7166.37	1003.65	-256.20	-1002.28	40°10'33.232"N	104°57'42.173"W	1.78	
7854.00	89.230	271.500	7165.71	1088.60	-254.13	-1087.25	40°10'33.252"N	104°57'43.268"W	2.87	
7939.00	88.670	270.580	7167.27	1173.57	-252.59	-1172.22	40°10'33.268"N	104°57'44.362"W	1.27	
8024.00	88.330	269.980	7169.49	1258.53	-252.18	-1257.19	40°10'33.272"N	104°57'45.457"W	0.81	
8109.00	88.020	270.020	7172.20	1343.49	-252.18	-1342.15	40°10'33.272"N	104°57'46.552"W	0.37	

# Actual Wellpath Report

VOGL 34N-35HZ AWP

Page 4 of 7

REFERENCE WELLPATH IDENTIFICATION			
Operator	KERR-MCGEE OIL & GAS ONSHORE LP	Slot	SLOT#28 VOGL 34N-35HZ (526'FSL & 711'FWL, SEC.36)
Area	COLORADO	Well	VOGL 34N-35HZ
Field	WELD COUNTY (KERR MCGEE)	Wellbore	VOGL 34N-35HZ AWB
Facility	SEC.36-T3N-R68W		

## WELLPATH DATA (142 stations)

MD [ft]	Inclination [°]	Azimuth [°]	TVD [ft]	Vert Sect [ft]	North [ft]	East [ft]	Latitude	Longitude	DLS [°/100ft]	Comments
8194.00	89.160	269.920	7174.29	1428.46	-252.22	-1427.12	40°10'33.271"N	104°57'47.646"W	1.35	
8280.00	89.340	270.220	7175.42	1514.45	-252.12	-1513.11	40°10'33.272"N	104°57'48.754"W	0.41	
8365.00	89.630	270.330	7176.18	1599.44	-251.71	-1598.11	40°10'33.276"N	104°57'49.849"W	0.36	
8450.00	90.030	270.230	7176.44	1684.44	-251.29	-1683.11	40°10'33.280"N	104°57'50.944"W	0.49	
8535.00	90.550	270.280	7176.01	1769.43	-250.91	-1768.10	40°10'33.284"N	104°57'52.039"W	0.61	
8620.00	90.860	270.600	7174.96	1854.42	-250.26	-1853.09	40°10'33.290"N	104°57'53.134"W	0.52	
8705.00	90.120	269.810	7174.23	1939.41	-249.96	-1938.09	40°10'33.293"N	104°57'54.229"W	1.27	
8791.00	90.430	269.270	7173.82	2025.41	-250.65	-2024.09	40°10'33.286"N	104°57'55.337"W	0.72	
8875.00	89.690	268.730	7173.73	2109.40	-252.11	-2108.07	40°10'33.272"N	104°57'56.419"W	1.09	
8961.00	89.900	269.010	7174.04	2195.39	-253.81	-2194.05	40°10'33.255"N	104°57'57.526"W	0.41	
9046.00	89.410	268.310	7174.55	2280.37	-255.80	-2279.03	40°10'33.235"N	104°57'58.621"W	1.01	
9131.00	91.320	269.140	7174.01	2365.36	-257.69	-2364.00	40°10'33.216"N	104°57'59.716"W	2.45	
9216.00	90.640	268.260	7172.56	2450.33	-259.62	-2448.97	40°10'33.197"N	104°58'00.810"W	1.31	
9301.00	90.000	267.160	7172.08	2535.28	-263.01	-2533.89	40°10'33.164"N	104°58'01.905"W	1.50	
9386.00	90.890	267.710	7171.42	2620.21	-266.82	-2618.81	40°10'33.126"N	104°58'02.998"W	1.23	
9471.00	91.410	268.960	7169.71	2705.16	-269.29	-2703.75	40°10'33.101"N	104°58'04.093"W	1.59	
9556.00	92.460	269.350	7166.84	2790.11	-270.54	-2788.69	40°10'33.089"N	104°58'05.187"W	1.32	
9641.00	91.470	269.630	7163.93	2875.06	-271.30	-2873.64	40°10'33.081"N	104°58'06.281"W	1.21	
9726.00	91.170	269.420	7161.97	2960.04	-272.00	-2958.61	40°10'33.074"N	104°58'07.376"W	0.43	
9812.00	91.780	269.180	7159.76	3046.00	-273.05	-3044.58	40°10'33.064"N	104°58'08.483"W	0.76	
9897.00	90.240	270.230	7158.26	3130.99	-273.49	-3129.56	40°10'33.059"N	104°58'09.578"W	2.19	
9982.00	90.430	270.770	7157.76	3215.98	-272.75	-3214.55	40°10'33.067"N	104°58'10.673"W	0.67	
10067.00	89.250	270.950	7158.00	3300.96	-271.47	-3299.54	40°10'33.079"N	104°58'11.768"W	1.40	
10152.00	89.070	270.860	7159.25	3385.93	-270.13	-3384.52	40°10'33.092"N	104°58'12.863"W	0.24	
10323.00	90.920	271.130	7159.26	3556.88	-267.16	-3555.49	40°10'33.121"N	104°58'15.065"W	1.09	
10408.00	89.010	270.380	7159.31	3641.86	-266.04	-3640.48	40°10'33.132"N	104°58'16.160"W	2.41	
10493.00	88.490	269.600	7161.17	3726.84	-266.05	-3725.46	40°10'33.132"N	104°58'17.255"W	1.10	
10663.00	88.490	269.260	7165.65	3896.77	-267.74	-3895.39	40°10'33.115"N	104°58'19.444"W	0.20	
10748.00	89.160	269.130	7167.39	3981.75	-268.94	-3980.36	40°10'33.103"N	104°58'20.539"W	0.80	
10833.00	89.290	269.590	7168.54	4066.74	-269.89	-4065.35	40°10'33.094"N	104°58'21.634"W	0.56	
10919.00	90.370	269.170	7168.80	4152.74	-270.82	-4151.34	40°10'33.084"N	104°58'22.742"W	1.35	
11004.00	89.810	269.540	7168.66	4237.74	-271.77	-4236.33	40°10'33.075"N	104°58'23.837"W	0.79	
11089.00	89.750	269.960	7168.99	4322.74	-272.15	-4321.33	40°10'33.071"N	104°58'24.932"W	0.50	
11174.00	89.160	269.770	7169.80	4407.73	-272.35	-4406.33	40°10'33.069"N	104°58'26.027"W	0.73	
11259.00	89.810	269.670	7170.56	4492.73	-272.76	-4491.32	40°10'33.065"N	104°58'27.122"W	0.77	
11345.00	90.120	269.640	7170.61	4578.73	-273.28	-4577.32	40°10'33.059"N	104°58'28.229"W	0.36	
11430.00	89.870	269.550	7170.62	4663.73	-273.88	-4662.32	40°10'33.053"N	104°58'29.324"W	0.31	
11514.00	89.810	269.840	7170.86	4747.73	-274.33	-4746.32	40°10'33.049"N	104°58'30.407"W	0.35	
11599.00	89.690	269.640	7171.23	4832.73	-274.71	-4831.32	40°10'33.045"N	104°58'31.502"W	0.27	
11684.00	89.160	268.930	7172.08	4917.72	-275.77	-4916.30	40°10'33.034"N	104°58'32.596"W	1.04	
11769.00	90.270	269.050	7172.50	5002.71	-277.27	-5001.29	40°10'33.019"N	104°58'33.691"W	1.31	
11854.00	90.700	268.790	7171.78	5087.70	-278.87	-5086.27	40°10'33.003"N	104°58'34.786"W	0.59	
11940.00	90.270	268.900	7171.05	5173.69	-280.61	-5172.25	40°10'32.986"N	104°58'35.894"W	0.52	
12025.00	91.590	268.110	7169.68	5258.66	-282.82	-5257.21	40°10'32.964"N	104°58'36.988"W	1.81	
12110.00	92.220	268.110	7166.85	5343.58	-285.63	-5342.11	40°10'32.936"N	104°58'38.082"W	0.74	

# Actual Wellpath Report

VOGL 34N-35HZ AWP

Page 5 of 7

## REFERENCE WELLPATH IDENTIFICATION

Operator	KERR-MCGEE OIL & GAS ONSHORE LP	Slot	SLOT#28 VOGL 34N-35HZ (526'FSL & 711'FWL, SEC.36)
Area	COLORADO	Well	VOGL 34N-35HZ
Field	WELD COUNTY (KERR MCGEE)	Wellbore	VOGL 34N-35HZ AWB
Facility	SEC.36-T3N-R68W		

## WELLPATH DATA (142 stations)

MD [ft]	Inclination [°]	Azimuth [°]	TVD [ft]	Vert Sect [ft]	North [ft]	East [ft]	Latitude	Longitude	DLS [°/100ft]	Comments
12195.00	91.290	269.420	7164.25	5428.52	-287.46	-5427.05	40°10'32.917"N	104°58'39.176"W	1.89	
12280.00	91.480	271.420	7162.19	5513.49	-286.83	-5512.02	40°10'32.923"N	104°58'40.271"W	2.36	
12365.00	89.960	272.310	7161.12	5598.42	-284.07	-5596.96	40°10'32.951"N	104°58'41.365"W	2.07	
12451.00	89.750	272.710	7161.34	5684.31	-280.30	-5682.88	40°10'32.988"N	104°58'42.472"W	0.53	
12536.00	88.110	271.730	7162.93	5769.21	-277.01	-5767.80	40°10'33.020"N	104°58'43.566"W	2.25	
12639.00	87.660	270.800	7166.73	5872.10	-274.74	-5870.70	40°10'33.042"N	104°58'44.892"W	1.00	Last BHI MWD+IFR Surveys
12708.00	87.660	270.800	7169.55	5941.03	-273.77	-5939.64	40°10'33.052"N	104°58'45.780"W	0.00	Projection to Bit

## HOLE & CASING SECTIONS - Ref Wellbore: VOGL 34N-35HZ AWB Ref Wellpath: VOGL 34N-35HZ AWP

String/Diameter	Start MD [ft]	End MD [ft]	Interval [ft]	Start TVD [ft]	End TVD [ft]	Start N/S [ft]	Start E/W [ft]	End N/S [ft]	End E/W [ft]
13.5in Open Hole	16.00	1158.00	1142.00	16.00	1157.97	0.00	0.00	8.15	-0.47
9.625in Casing Surface	16.00	1148.00	1132.00	16.00	1147.97	0.00	0.00	8.08	-0.44
8.75in Open Hole	1158.00	7571.00	6413.00	1157.97	7175.91	8.15	-0.47	-260.78	-804.58
7in Casing Intermediate	16.00	7558.00	7542.00	16.00	7175.89	0.00	0.00	-260.88	-791.58
6.125in Open Hole	7571.00	12708.00	5137.00	7175.91	7169.55	-260.78	-804.58	-273.77	-5939.64

## TARGETS

Name	MD [ft]	TVD [ft]	North [ft]	East [ft]	Grid East [US ft]	Grid North [US ft]	Latitude	Longitude	Shape
SEC.35-T3N-R68W SECTION LINES		-119.00	4056.63	-5318.51	3146070.35	1311665.15	40°11'15.846"N	104°58'37.790"W	polygon
SEC.36-T3N-R68W SECTION LINES		-119.00	4056.63	-5318.51	3146070.35	1311665.15	40°11'15.846"N	104°58'37.790"W	polygon
VOGL 34N-35HZ BHL (295'FSL & 1'FWL, SEC.35) REV-2		7156.00	-288.85	-5965.28	3145450.17	1307316.00	40°10'32.902"N	104°58'46.110"W	point
VOGL 34N-35HZ BHL ON PLAT (245'FSL & 1'FWL, SEC.35) REV-1		7156.00	-338.85	-5965.28	3145450.48	1307266.00	40°10'32.408"N	104°58'46.110"W	point
VOGL 34N-35HZ LAND BOX		7156.00	0.00	0.00	3151413.31	1307641.28	40°10'35.764"N	104°57'29.261"W	polygon

# Actual Wellpath Report

VOGL 34N-35HZ AWP

Page 6 of 7

REFERENCE WELLPATH IDENTIFICATION			
Operator	KERR-MCGEE OIL & GAS ONSHORE LP	Slot	SLOT#28 VOGL 34N-35HZ (526'FSL & 711'FWL, SEC.36)
Area	COLORADO	Well	VOGL 34N-35HZ
Field	WELD COUNTY (KERR MCGEE)	Wellbore	VOGL 34N-35HZ AWB
Facility	SEC.36-T3N-R68W		

WELLPATH COMPOSITION - Ref Wellbore: VOGL 34N-35HZ AWB    Ref Wellpath: VOGL 34N-35HZ AWP				
Start MD [ft]	End MD [ft]	Positional Uncertainty Model	Log Name/Comment	Wellbore
16.00	1069.00	Generic gyro - continuous (Standard)	MS ENERGY GYRO SURVEYS <116-1069>	VOGL 34N-35HZ AWB
1069.00	7507.00	NaviTrak (IFR)	BHI MWD+IFR SURVEYS 8 3/4" HOLE <1213-7507>	VOGL 34N-35HZ AWB
7507.00	12639.00	NaviTrak (IFR)	BHI MWD+IFR SURVEYS 6 1/8" HOLE <7599-12639>	VOGL 34N-35HZ AWB
12639.00	12708.00	Blind Drilling (std)	Projection to bit	VOGL 34N-35HZ AWB

# Actual Wellpath Report

VOGL 34N-35HZ AWP

Page 7 of 7

REFERENCE WELLPATH IDENTIFICATION			
Operator	KERR-MCGEE OIL & GAS ONSHORE LP	Slot	SLOT#28 VOGL 34N-35HZ (526'FSL & 711'FWL, SEC.36)
Area	COLORADO	Well	VOGL 34N-35HZ
Field	WELD COUNTY (KERR MCGEE)	Wellbore	VOGL 34N-35HZ AWB
Facility	SEC.36-T3N-R68W		

WELLPATH COMMENTS				
MD [ft]	Inclination [°]	Azimuth [°]	TVD [ft]	Comment
16.00	0.000	53.820	16.00	Tie-On
116.00	0.410	53.820	116.00	Begin GYRO Surveys
1069.00	0.540	350.410	1068.97	Tie-Into GYRO Surveys
1213.00	0.440	326.320	1212.96	Begin BHI MWD+IFR Surveys
7558.00	89.210	270.330	7175.89	7" Casing Point
12639.00	87.660	270.800	7166.73	Last BHI MWD+IFR Surveys
12708.00	87.660	270.800	7169.55	Projection to Bit