

T1S, R67W, 6th P.M.

GREAT WESTERN OIL & GAS COMPANY

Well location, WILLOW BEND LD 18-23HC, located as shown in the NE 1/4 NE 1/4 of Section 18, T1S, R67W, 6th P.M., Adams County, Colorado.

BASIS OF ELEVATION

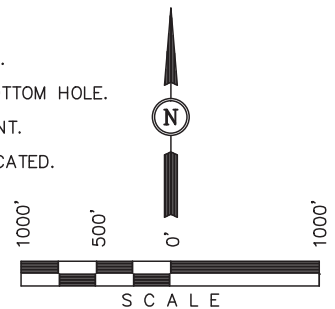
BENCHMARK JR 53 5026 LOCATED IN THE SW 1/4 SE 1/4 OF SECTION 18, T1N, R68W, 6th P.M., TAKEN FROM 1988 PUBLISHED DATUM BY THE UNITED STATES DEPARTMENT OF THE INTERIOR, GEOLOGICAL SURVEY AS BEING 5028 FEET.

BASIS OF BEARINGS

BASIS OF BEARINGS IS A G.P.S. OBSERVATION.

LEGEND:

- └ = 90° SYMBOL
- = PROPOSED WELL HEAD.
- = PROPOSED TARGET BOTTOM HOLE.
- ◇ = PROPOSED ENTRY POINT.
- ▲ = SECTION CORNERS LOCATED.



LINE TABLE

LINE	DIRECTION	LENGTH
L1	S84°09'46"W	1180.02'

CERTIFICATION

THIS IS TO CERTIFY THAT THE ABOVE MAP WAS PREPARED FROM FIELD NOTES OF ACTUAL SURVEY MADE BY ME OR UNDER MY SUPERVISION AND THAT THE SAME ARE TRUE AND CORRECT TO THE BEST OF MY KNOWLEDGE AND BELIEF.

REGISTERED LAND SURVEYOR
REGISTRATION NO. 28285
STATE OF COLORADO
JAN 19 2014

REV: 10-24-14 J.W.

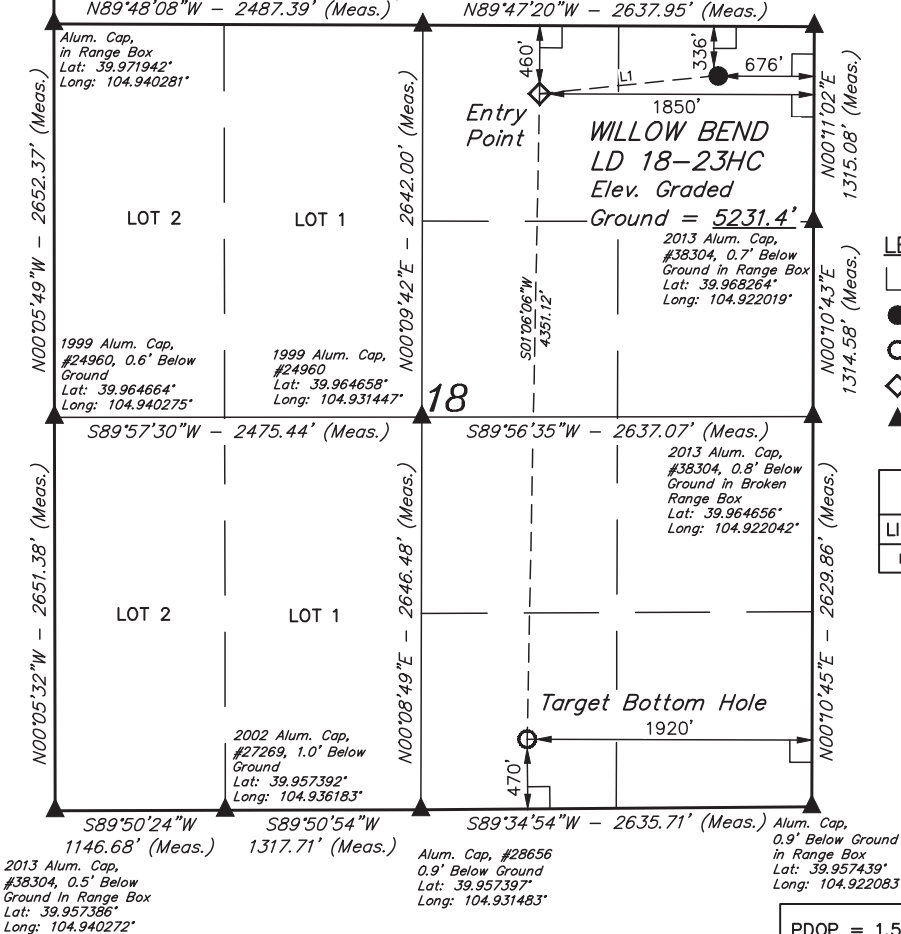
UINTAH ENGINEERING & LAND SURVEYING

85 SOUTH 200 EAST - VERNAL, UTAH 84078

(435) 789-1017

SCALE 1" = 1000'	DATE SURVEYED: 10-23-14	DATE DRAWN: 11-22-13
PARTY TROY BEASLEY G.B. J.W.	REFERENCES G.L.O. PLAT	
WEATHER COOL	FILE GREAT WESTERN OIL & GAS COMPANY	

R
68
W



PDOP = 1.5

NAD 83 (TARGET BOTTOM HOLE)	NAD 83 (ENTRY POINT)	NAD 83 (SURFACE LOCATION)
LATITUDE = 39°57'31.31" (39.958697)	LATITUDE = 39°58'14.29" (39.970636)	LATITUDE = 39°58'15.46" (39.970961)
LONGITUDE = 104°55'44.12" (104.928922)	LONGITUDE = 104°55'42.98" (104.928606)	LONGITUDE = 104°55'27.90" (104.924417)
NAD 27 (TARGET BOTTOM HOLE)	NAD 27 (ENTRY POINT)	NAD 27 (SURFACE LOCATION)
LATITUDE = 39°57'31.37" (39.958714)	LATITUDE = 39°58'14.35" (39.970653)	LATITUDE = 39°58'15.52" (39.970978)
LONGITUDE = 104°55'42.21" (104.928392)	LONGITUDE = 104°55'41.06" (104.928072)	LONGITUDE = 104°55'25.98" (104.923883)