

T6S, R96W, 6th P.M.

WPX Energy Rocky Mountain, LLC

1912 Brass Cap
0.8' High
Lat: 39.517039°
Long: 108.141883°

Pile of Stones
Lat: 39.517033°
Long: 108.123377°

Well location, GM 512-21 (SURFACE LOCATION), located as shown in the SE 1/4 NE 1/4 of Section 20, T6S, R96W, 6th P.M., Garfield County, Colorado.

BASIS OF ELEVATION

SPOT ELEVATION AT THE NORTHWEST CORNER OF SECTION 30, T5S, R95W, 6th P.M. TAKEN FROM THE FORKED GULCH QUADRANGLE, COLORADO, GARFIELD COUNTY, 7.5 MINUTE SERIES (TOPOGRAPHICAL MAP) PUBLISHED BY THE UNITED STATES DEPARTMENT OF THE INTERIOR, GEOLOGICAL SURVEY. SAID ELEVATION IS MARKED AS BEING 5966 FEET.

BASIS OF BEARINGS

BASIS OF BEARINGS IS A G.P.S. OBSERVATION.

GM 512-21
Elev. Ungraded Ground = 5574.9'

GM 512-21
TARGET BOTTOM
HOLE



PLAT #1



CERTIFICATE

THIS IS TO CERTIFY THAT THE ABOVE PLAT WAS PREPARED AND LOCATION AS SHOWN WAS STAKED ON THE GROUND FROM FIELD NOTES OF ACTUAL SURVEYS MADE BY ME OR UNDER MY SUPERVISION AND THAT THE SAME ARE TRUE AND CORRECT TO THE BEST OF MY KNOWLEDGE AND BELIEF.

REGISTERED LAND SURVEYOR
REGISTRATION NO. 17492
STATE OF COLORADO
10-14-13

REVISED: 10-14-13

UINTAH ENGINEERING & LAND SURVEYING
85 SOUTH 200 EAST - VERNAL, UTAH 84078
(435) 789-1017

LEGEND:

- = 90° SYMBOL
- = PROPOSED WELL HEAD.
- = SECTION CORNERS LOCATED.
- = SECTION CORNERS RE-EST.
(Not Set on Ground)

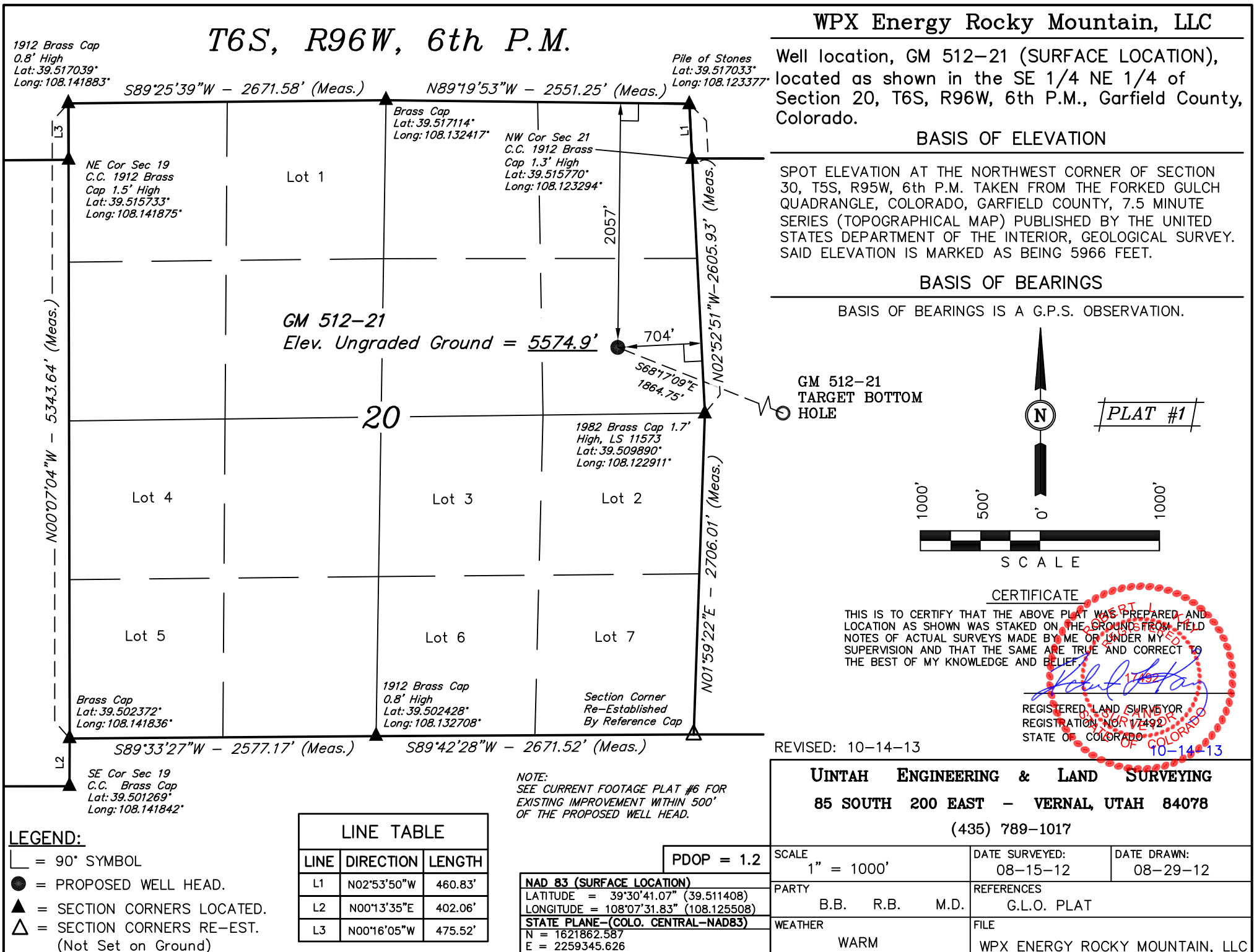
LINE TABLE

LINE	DIRECTION	LENGTH
L1	N02°53'50"W	460.83'
L2	N00°13'35"E	402.06'
L3	N00°16'05"W	475.52'

PDOP = 1.2

NAD 83 (SURFACE LOCATION)
LATITUDE = 39°30'41.07" (39.511408)
LONGITUDE = 108°07'31.83" (108.125508)
STATE PLANE-(COLO. CENTRAL-NAD83)
N = 1621862.587
E = 2259345.626

NOTE:
SEE CURRENT FOOTAGE PLAT #6 FOR
EXISTING IMPROVEMENT WITHIN 500'
OF THE PROPOSED WELL HEAD.



SCALE 1" = 1000'	DATE SURVEYED: 08-15-12	DATE DRAWN: 08-29-12
PARTY B.B. R.B. M.D.	REFERENCES G.L.O. PLAT	
WEATHER WARM	FILE WPX ENERGY ROCKY MOUNTAIN, LLC	