

**WARRIOR**  
ENERGY SERVICES

**RADIAL BOND LOG**  
GAMMA RAY  
CCL

Company BILL BARRETT CORPORATION  
Well ANSCHUTZ STATE 5-61-19-6457CH2  
Field NE WATTENBERG  
County WELD  
State COLORADO

Company BILL BARRETT CORPORATION  
Well ANSCHUTZ STATE 5-61-19-6457CH2  
Field NE WATTENBERG  
County WELD State COLORADO

Location: API # : 05-123-39447  
SHL: 965' FSL 300' FWL SW/SW  
SEC 19 TWP 5N RGE 61W  
Permanent Datum G.L. Elevation 4530'  
Log Measured From K.B. 16'  
Drilling Measured From K.B.  
Other Services K.B. 4546'  
D.F. 4545'  
G.L. 4530'

Date 9-7-2014

Run Number ONE  
Depth Driller 15934'  
Depth Logger 5568'  
Bottom Logged Interval 5568'  
Top Log Interval SURFACE  
Open Hole Size 8.75  
Type Fluid WATER  
Density / Viscosity 1.0  
Max. Recorded Temp. 168  
Estimated Cement Top 212'  
Time Well Ready N/A  
Time Logger on Bottom N/A  
Equipment Number 4310  
Location GREELEY CO.  
Recorded By A. STEERMAN  
Witnessed By JDAMRON

Borehole Record				Tubing Record			
Run Number	Bit	From	To	Size	Weight	From	To
ONE	13 1/2"	23'	823'				
TWO	8 3/4"	800'	6484'				
THREE	6 1/8"	6484'	15934'				

Casing Record		Tubing Record	
Surface String	Size	Wgt/Ft	Bottom
Prot. String	9.625"	36#	823'
Production String	7"	26#	6472
Liner	4.5"	11 6#	15926'

<<< Fold Here >>>

All interpretations are opinions based on inferences from electrical or other measurements and we cannot and do not guarantee the accuracy or correctness of any interpretation, and we shall not, except in the case of gross or willful negligence on our part, be liable or responsible for any loss, costs, damages, or expenses incurred or sustained by anyone resulting from any interpretation made by any of our officers, agents or employees. These interpretations are also subject to our general terms and conditions set out in our current Price Schedule.

Comments

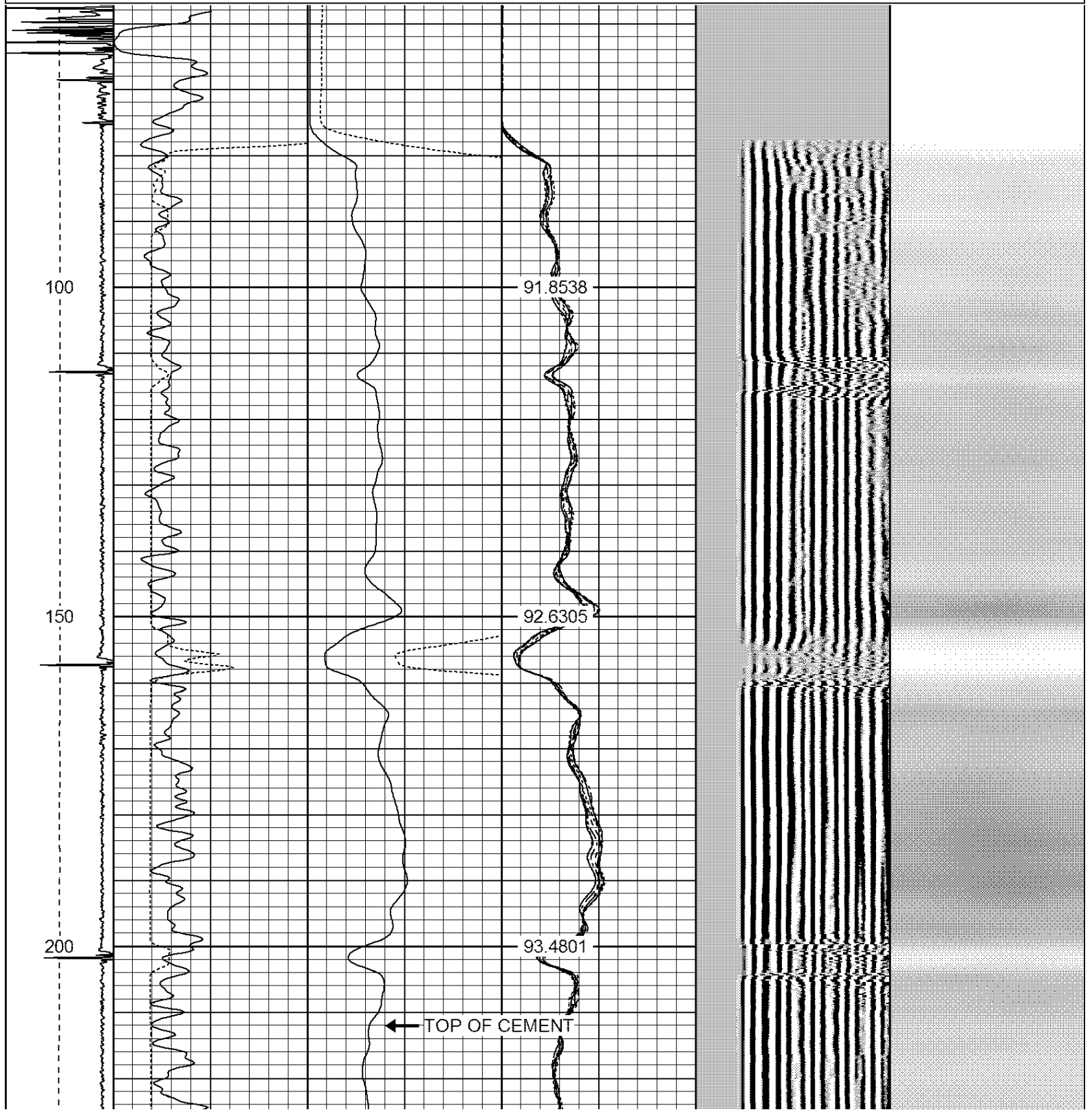
RAN CBL TO VERIFY CEMENT BOND  
CORRELATED TO LINER HANGER @5368'  
CORRELATED IN HOLE 67'  
MARKER JOINT 4423' TO 4452'

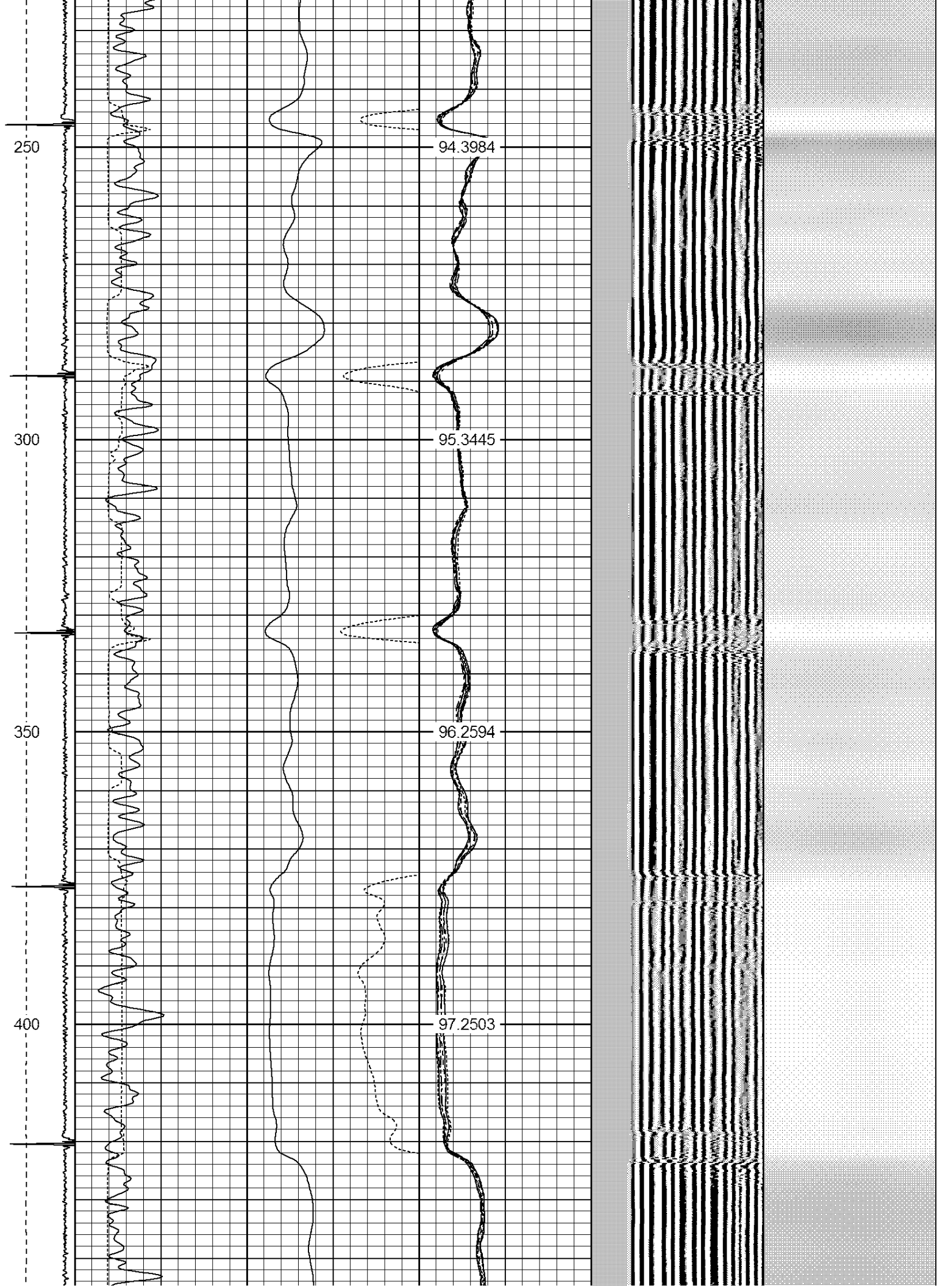
THANK YOU FOR USING WARRIOR ENERGY SERVICES

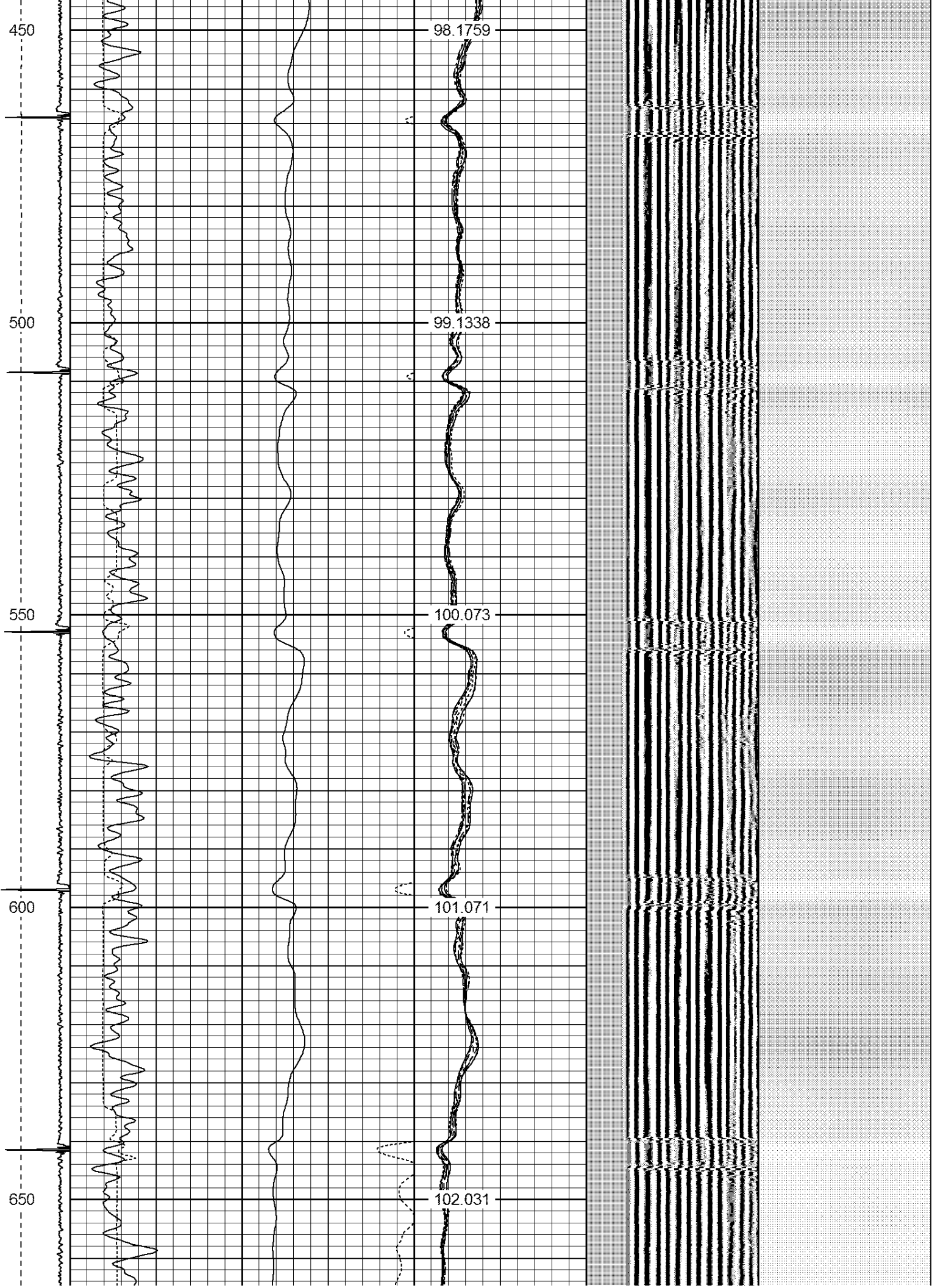
Sensor	Offset (ft)	Schematic	Description	Len (ft)	OD (in)	Wt (lb)

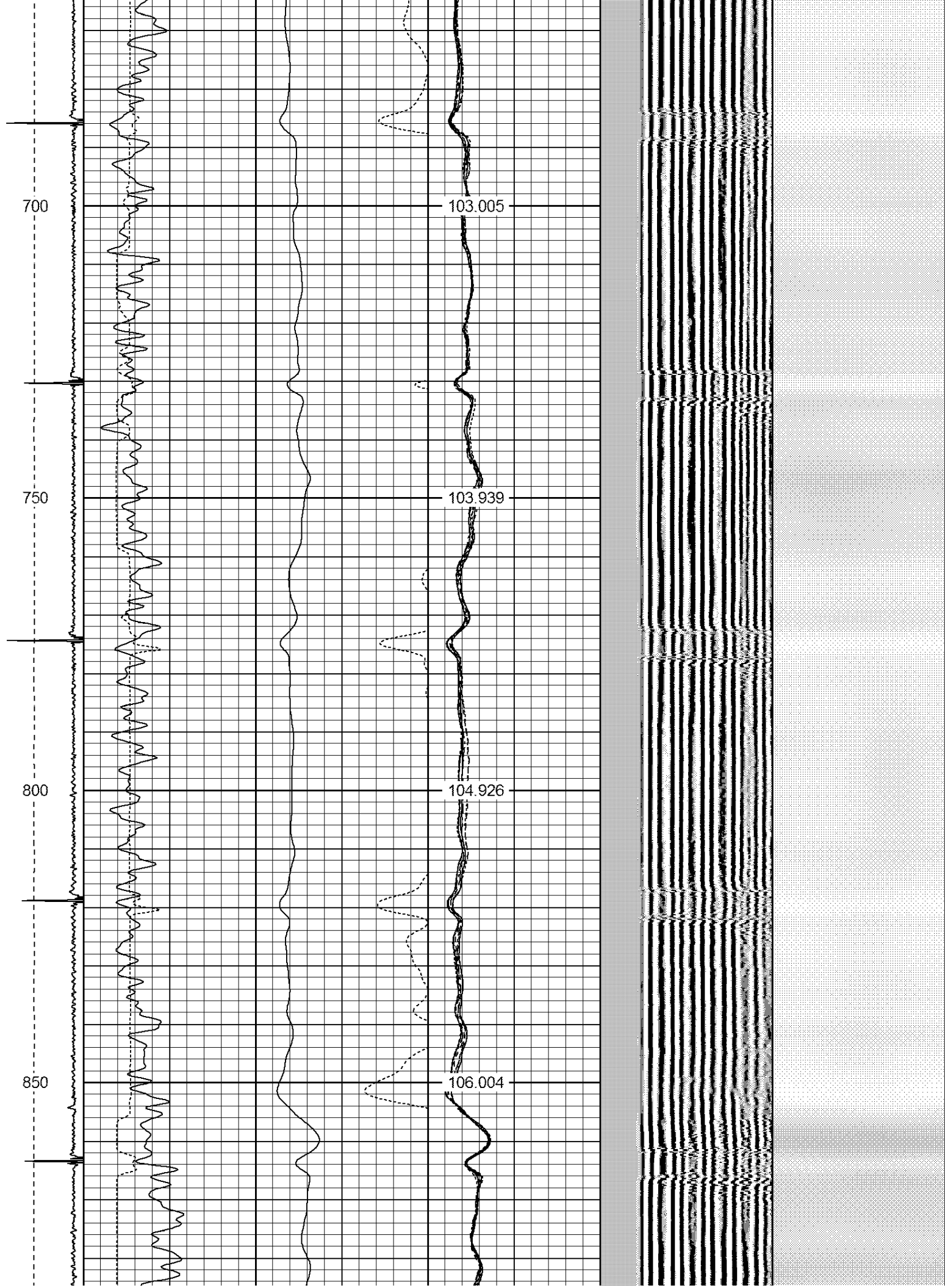
CNLSC	17.75		CNT-Probe_B (275) 6 bow centralizer	3.00	2.75	40.00
CNSSC	16.92					
HEADVOLT	16.08					
IntTemp	14.67					
WVF3FT	11.42		RBT-Probe (Base) Probe Radli Bond Tool with Digital Telemetry	8.92	2.75	90.00
WVFCAL	11.42					
WVFS1	11.42					
WVFS2	11.42					
WVFS3	11.42					
WVFS4	11.42					
WVFS5	11.42					
WVFS6	11.42					
WVFS7	11.42					
WVFS8	11.42					
WVF5FT	10.42					
CCL	3.64	PTS275	2.83	2.75		
GR	0.90	GR-Probe (275) Probe 2.75"	4.33	2.75	30.00	
Dataset: anschutz state 5-61-19-6457ch2.db: field/well/run1/pass5 Total Length: 19.08 ft Total Weight: 160.00 lb O.D. 2.75 in						

-9	CCL	1	200	TT (usec)	800	0	AMP (mV)	100	0	AMPS1	100	200	VDL	1200	1	Cement Map	8
LSPD			0	GR (GAPI)	200	0	AMPx5 (mV)	20	0	AMPS2	100				1		100
(ft/min)			200	GR (GAPI)	400				0	AMPS4	100						
0		250							0	AMPS5	100						
									0	AMPS6	100						
									0	AMPS7	100						
									0	AMPS8	100						
										IntTemp							
										(degF)							

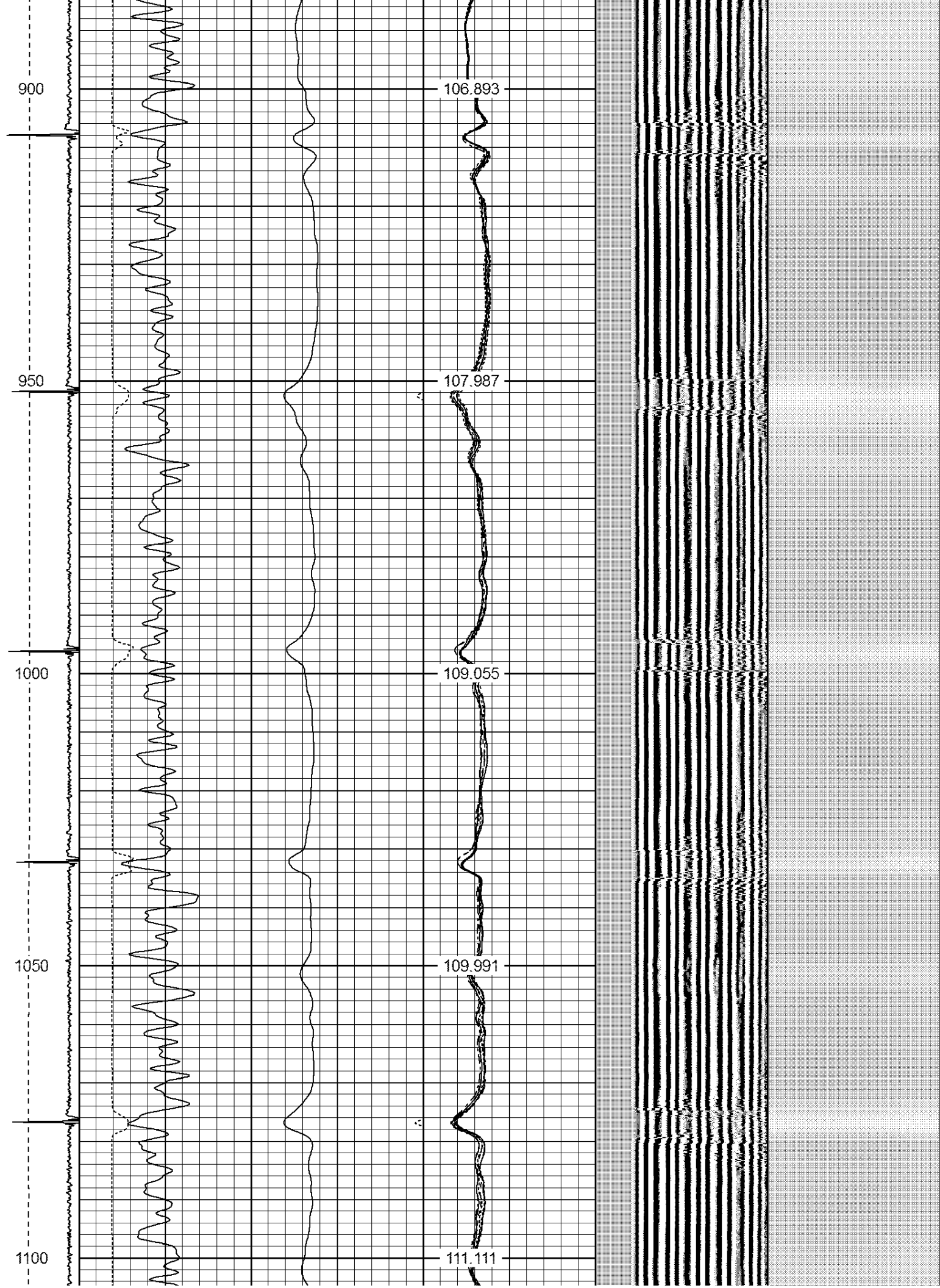


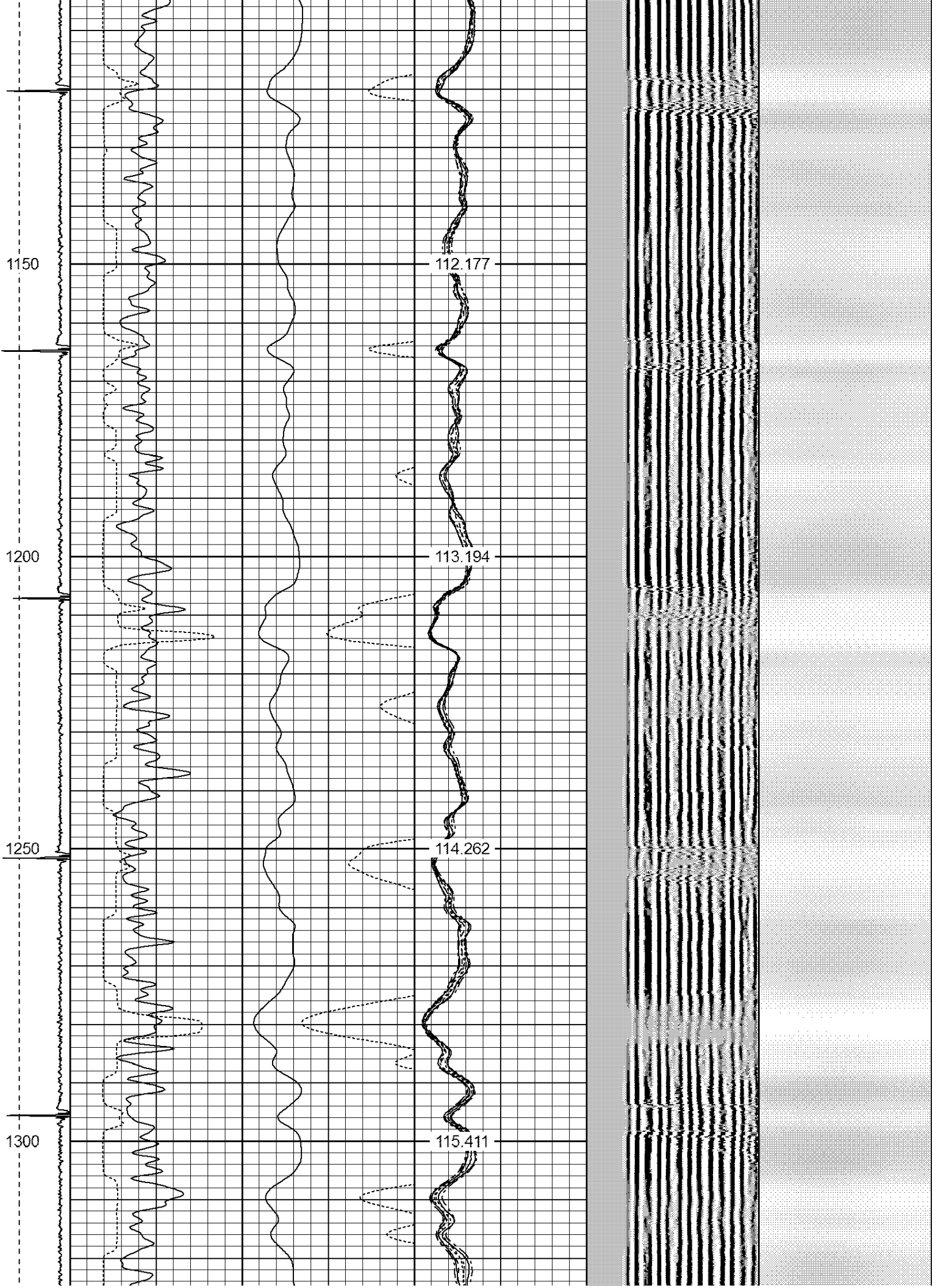














1350

116.392

1400

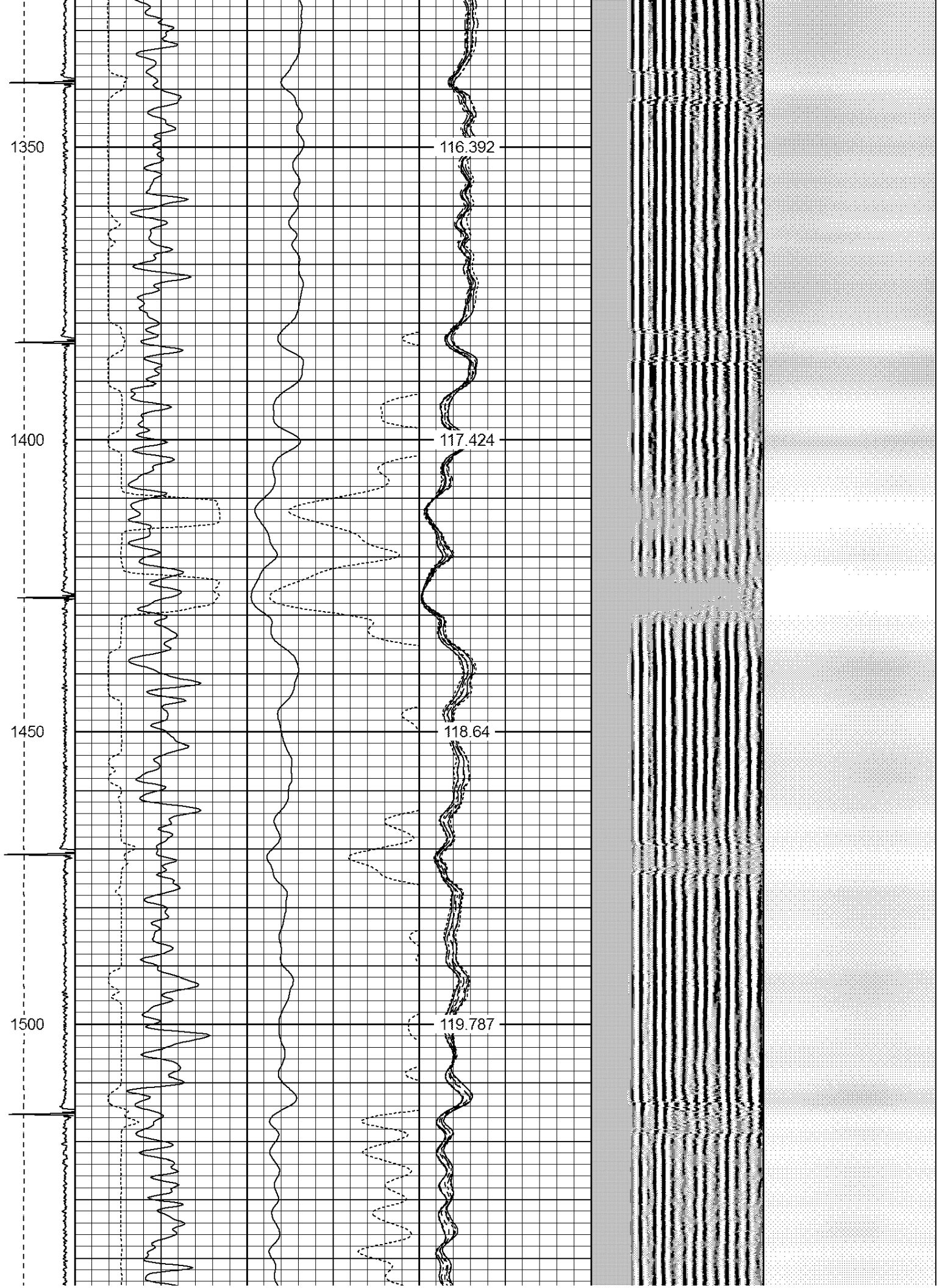
117.424

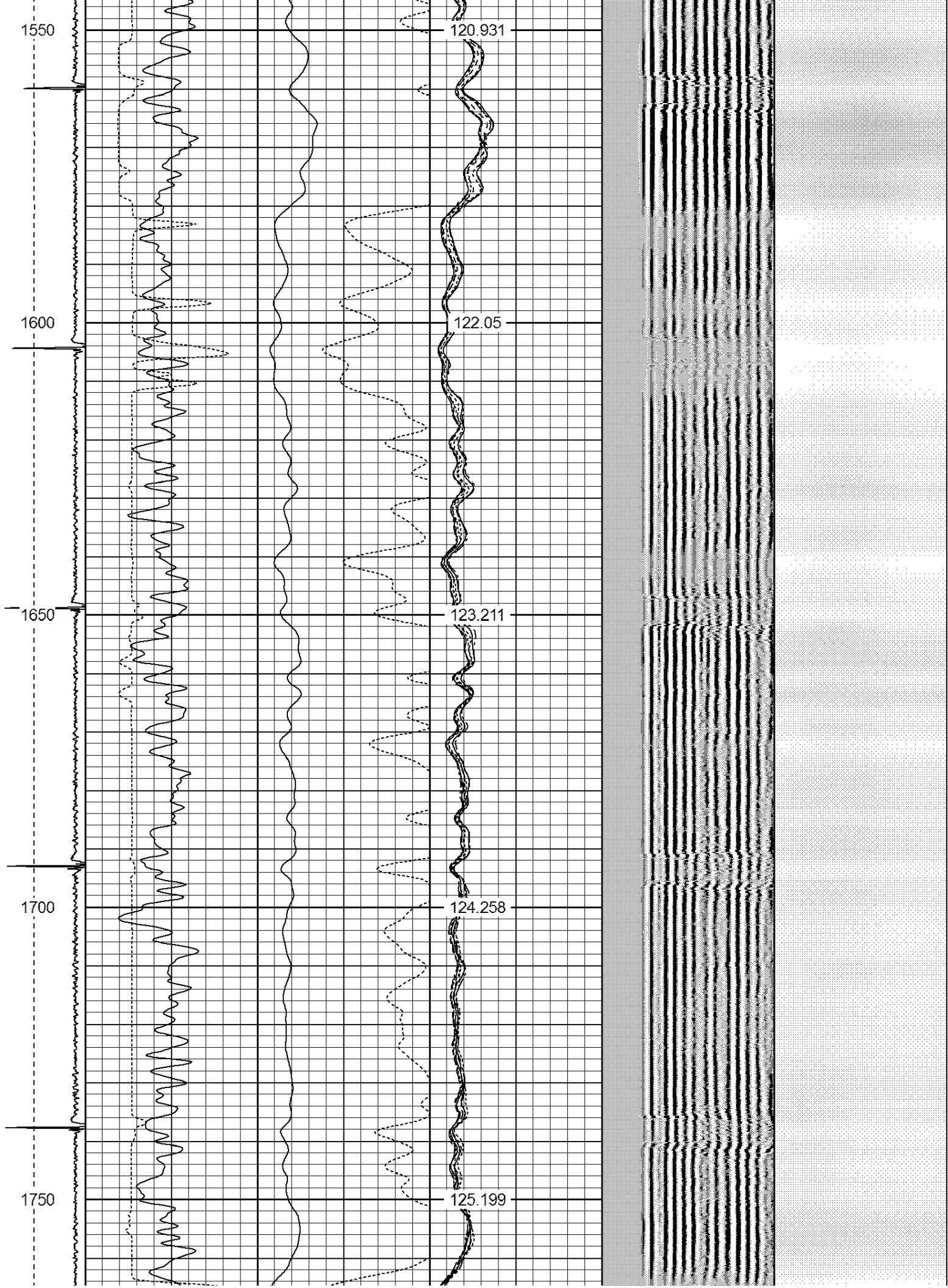
1450

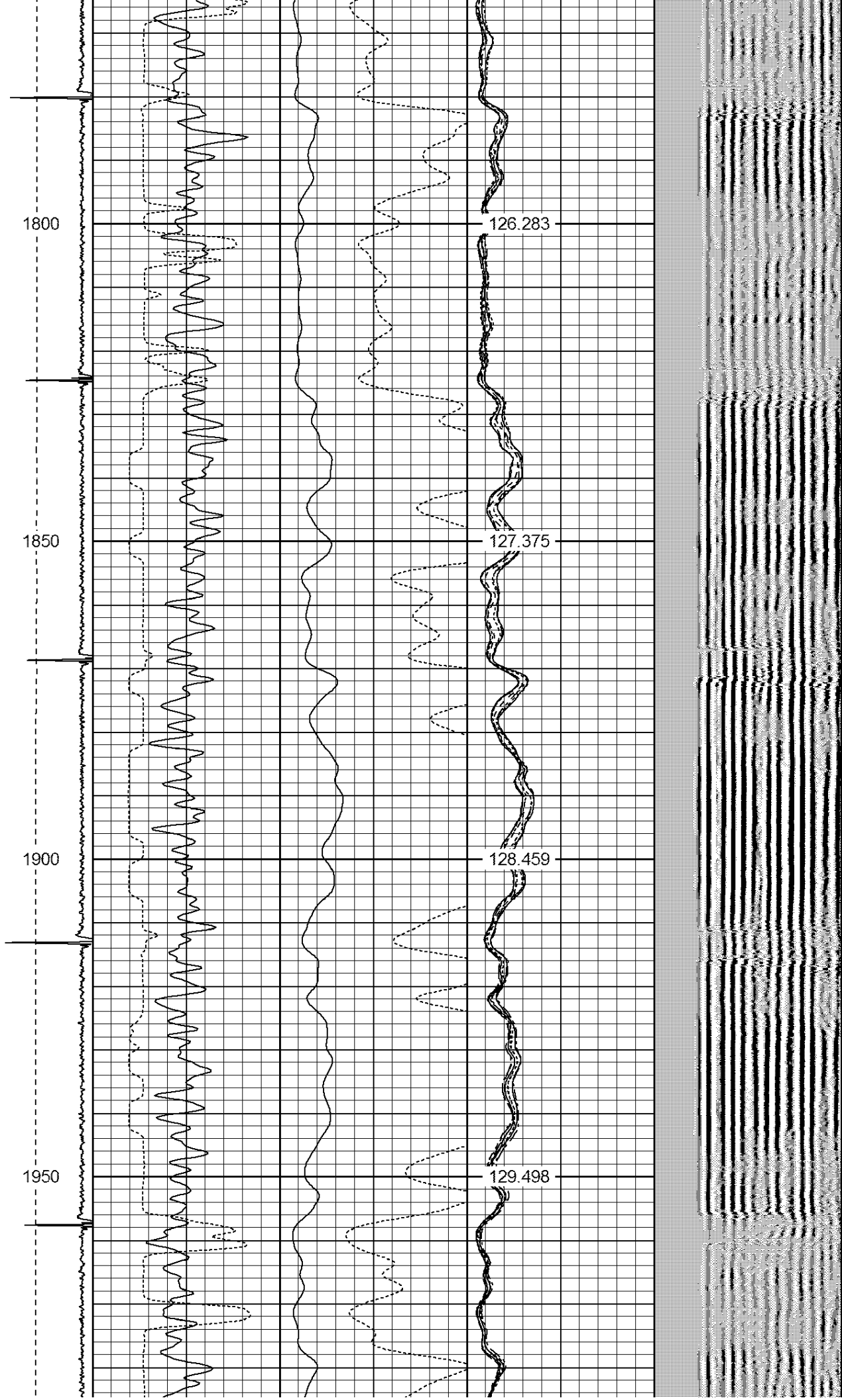
118.64

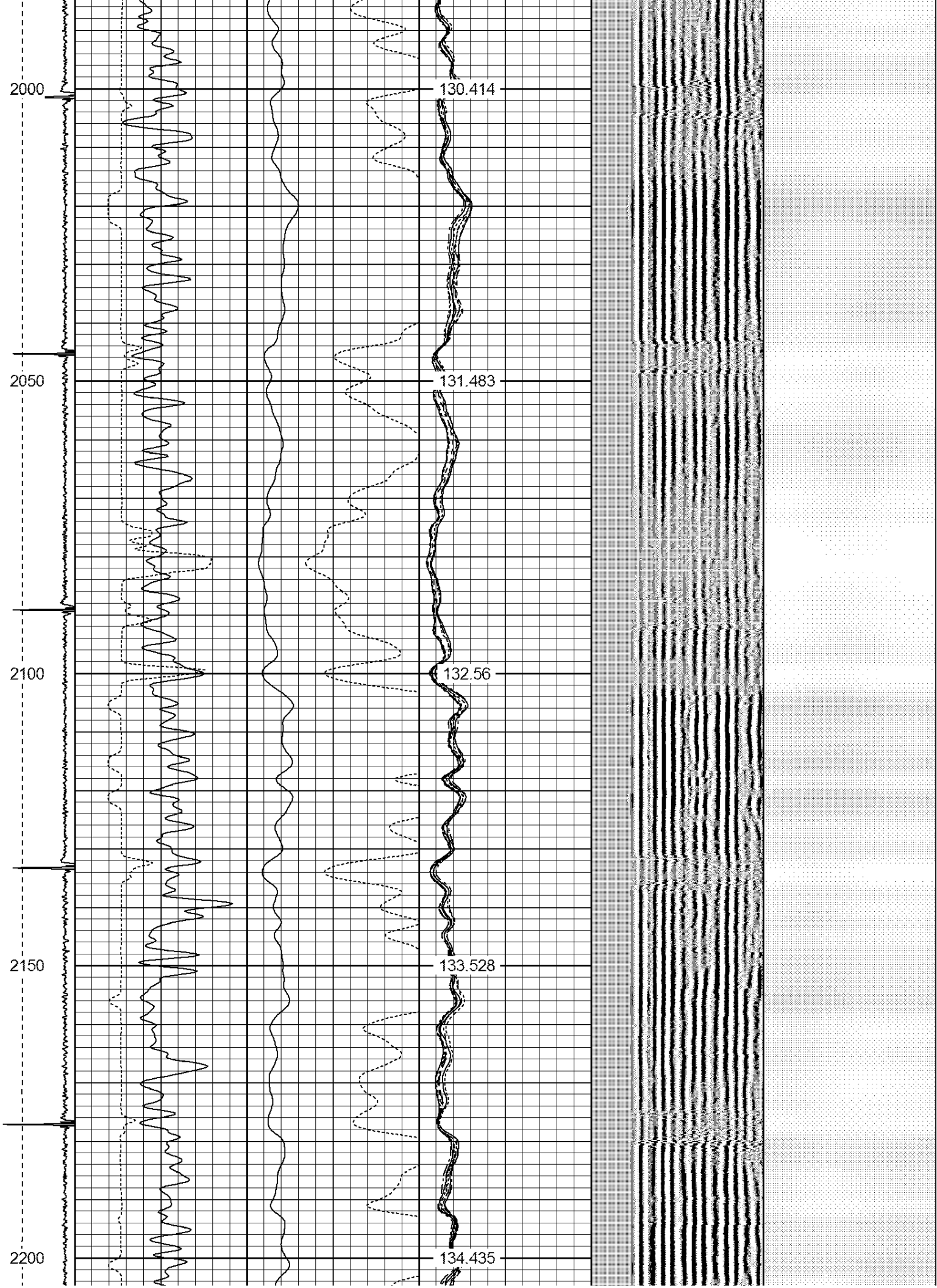
1500

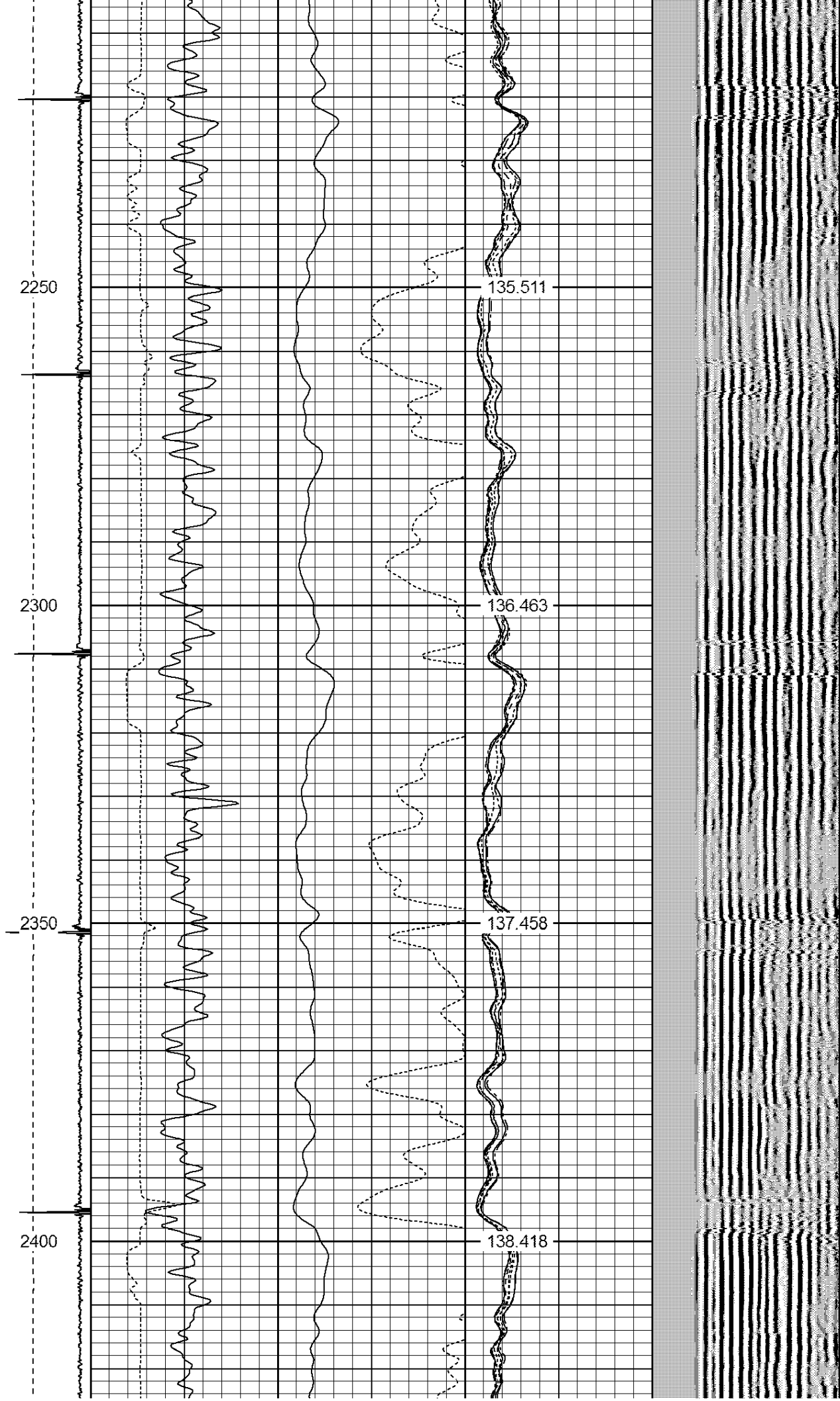
119.787













2450

139.308

2500

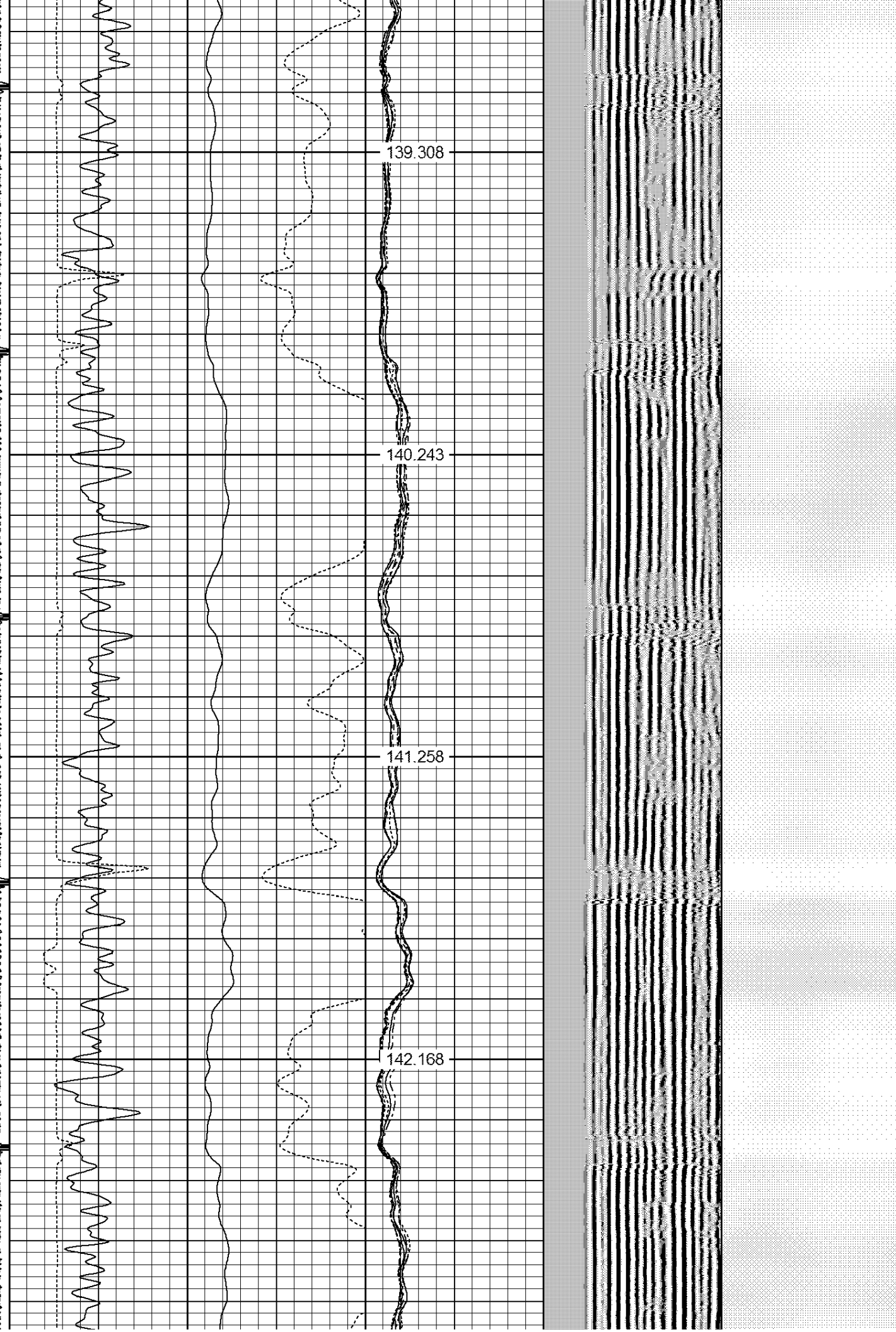
140.243

2550

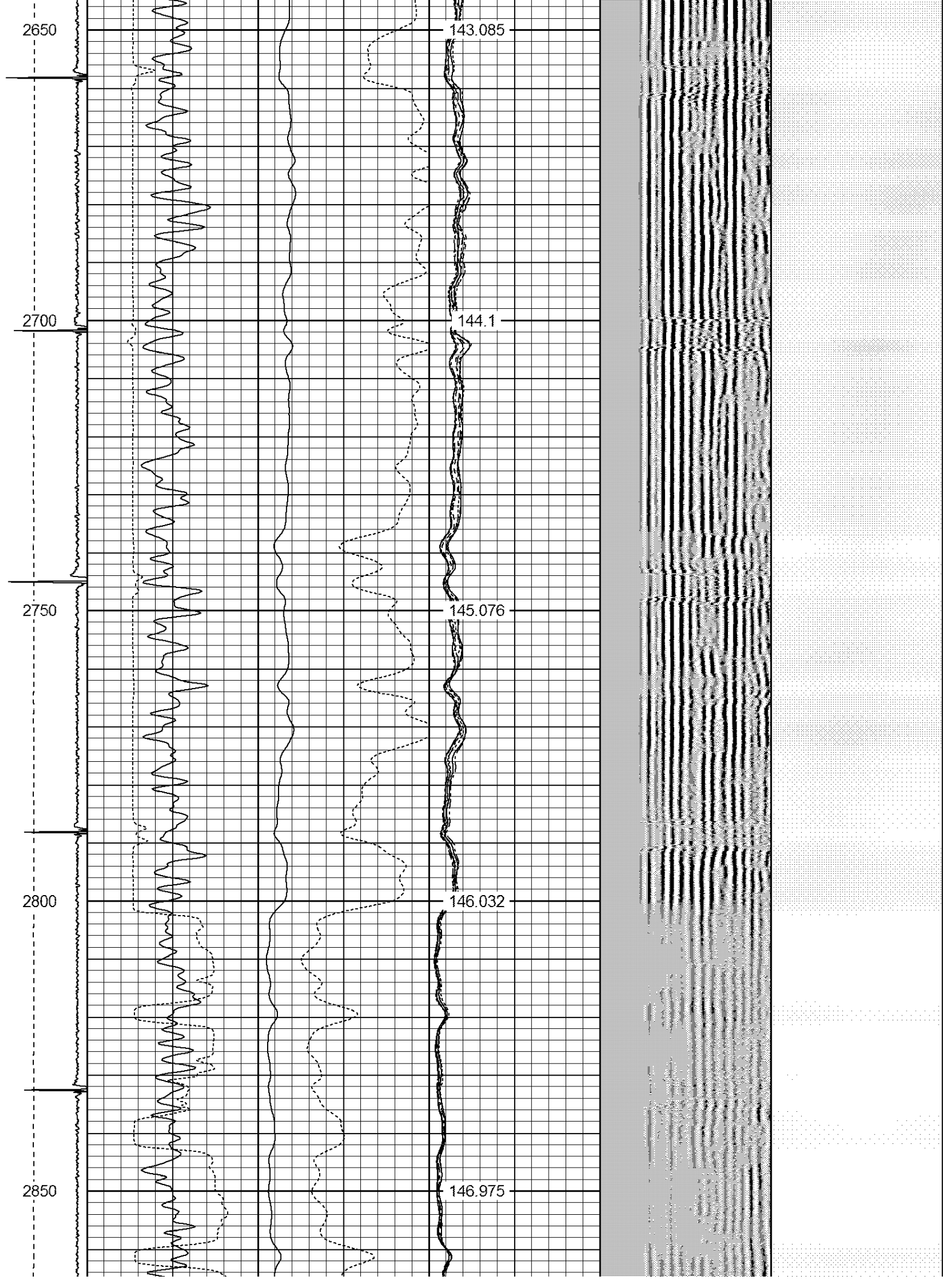
141.258

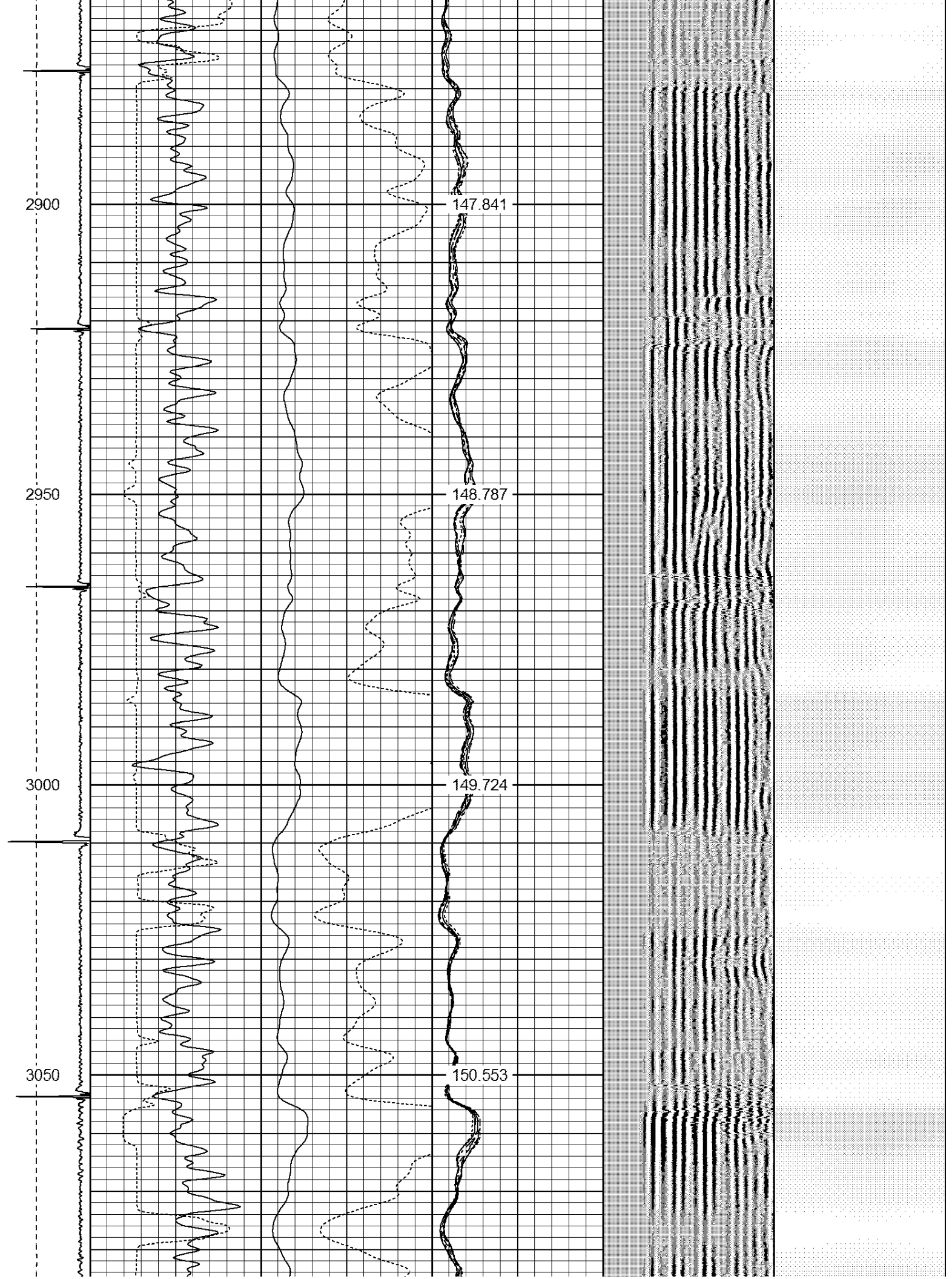
2600

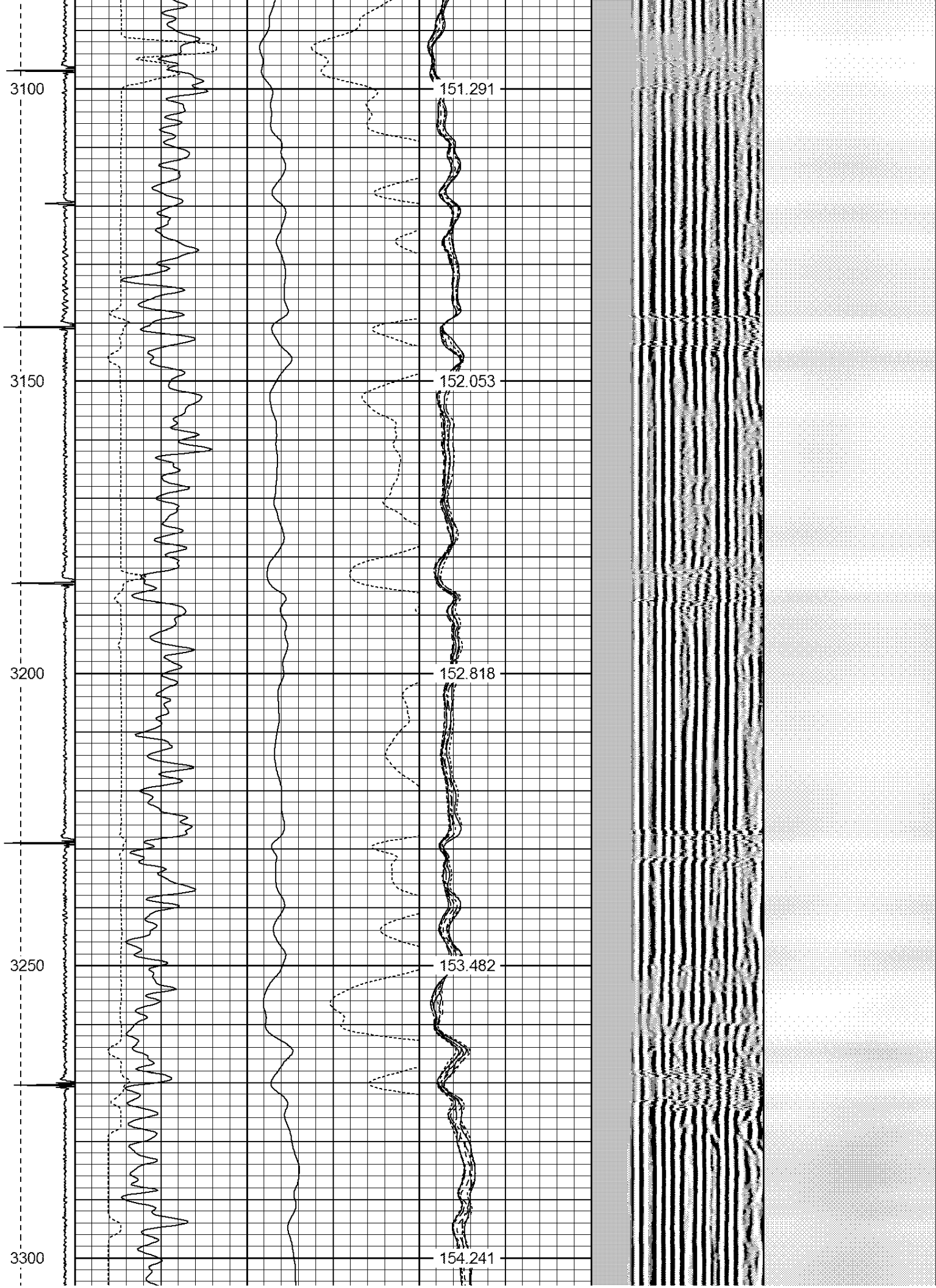
142.168











3350

154.972

3400

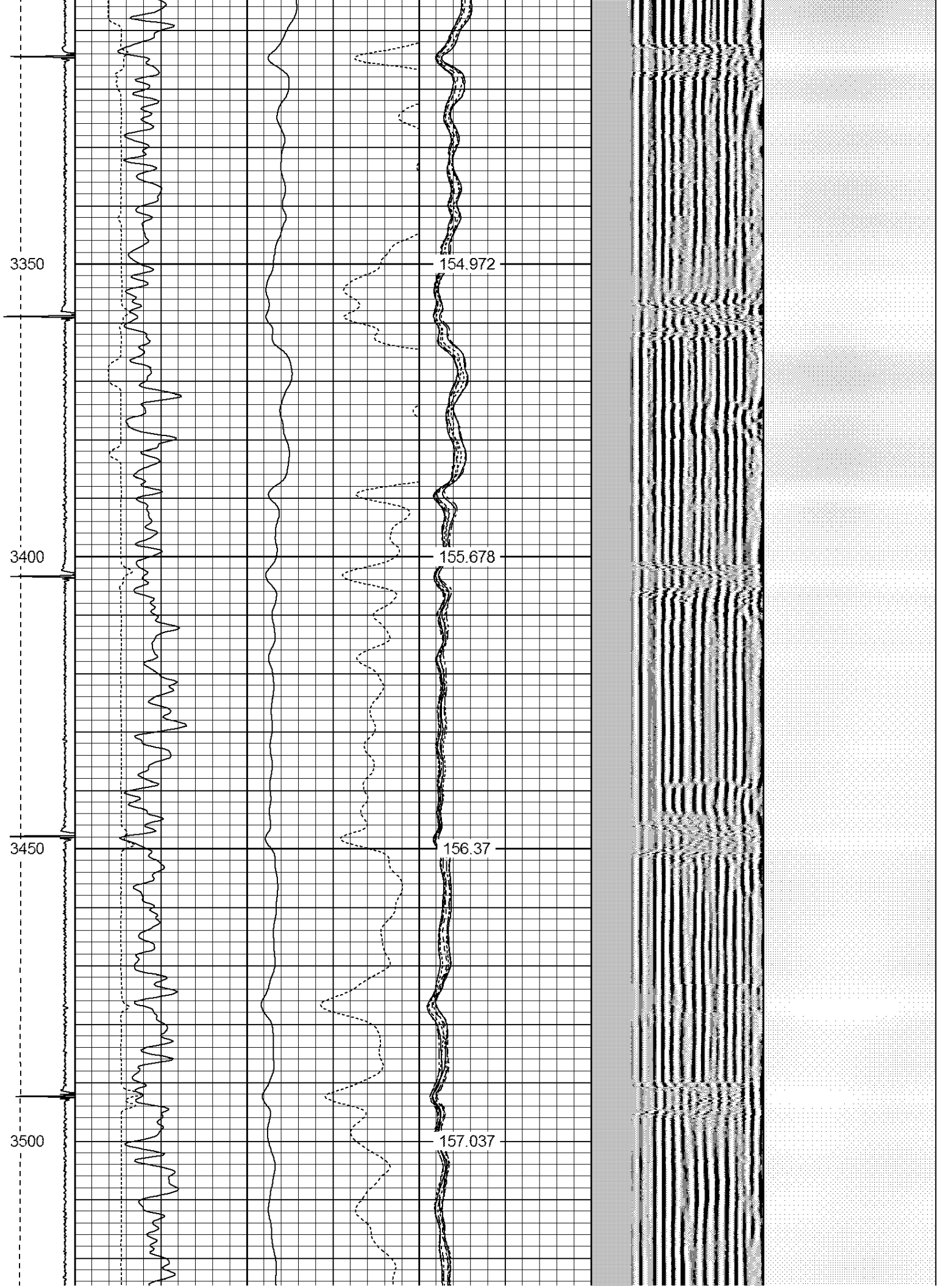
155.678

3450

156.37

3500

157.037



3550

157.788

3600

158.527

3650

159.203

3700

159.927





3750

160.602

3800

161.3

3850

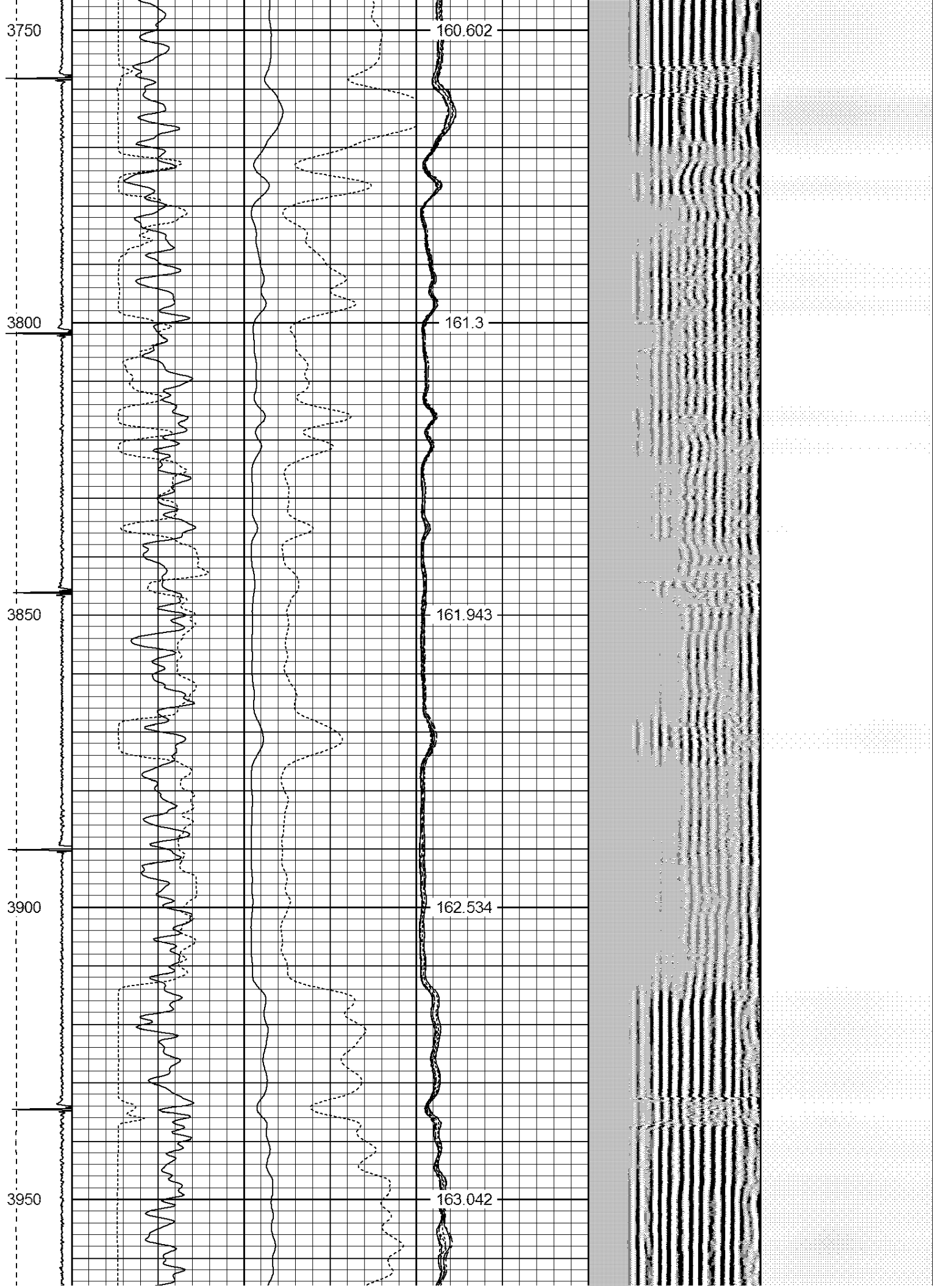
161.943

3900

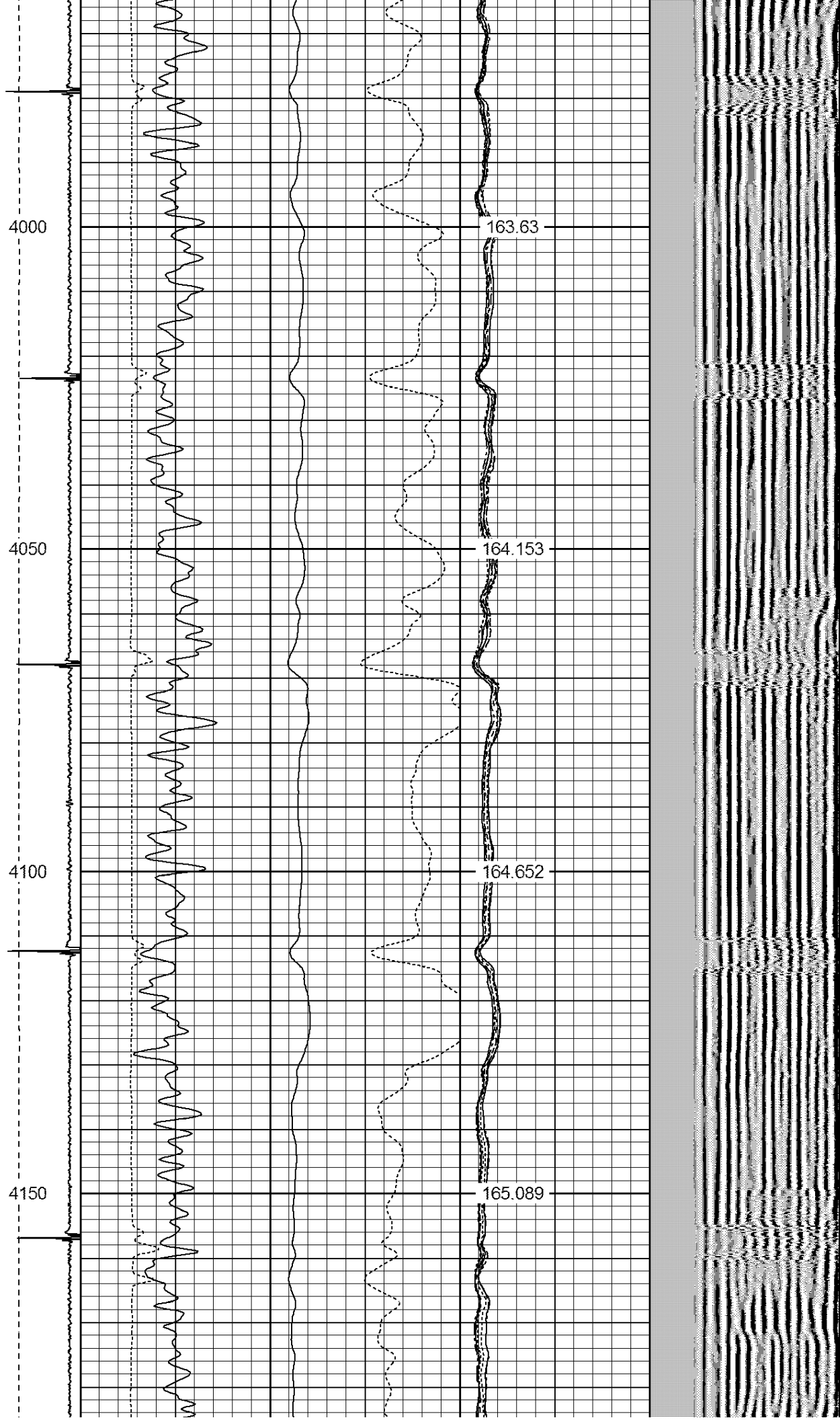
162.534

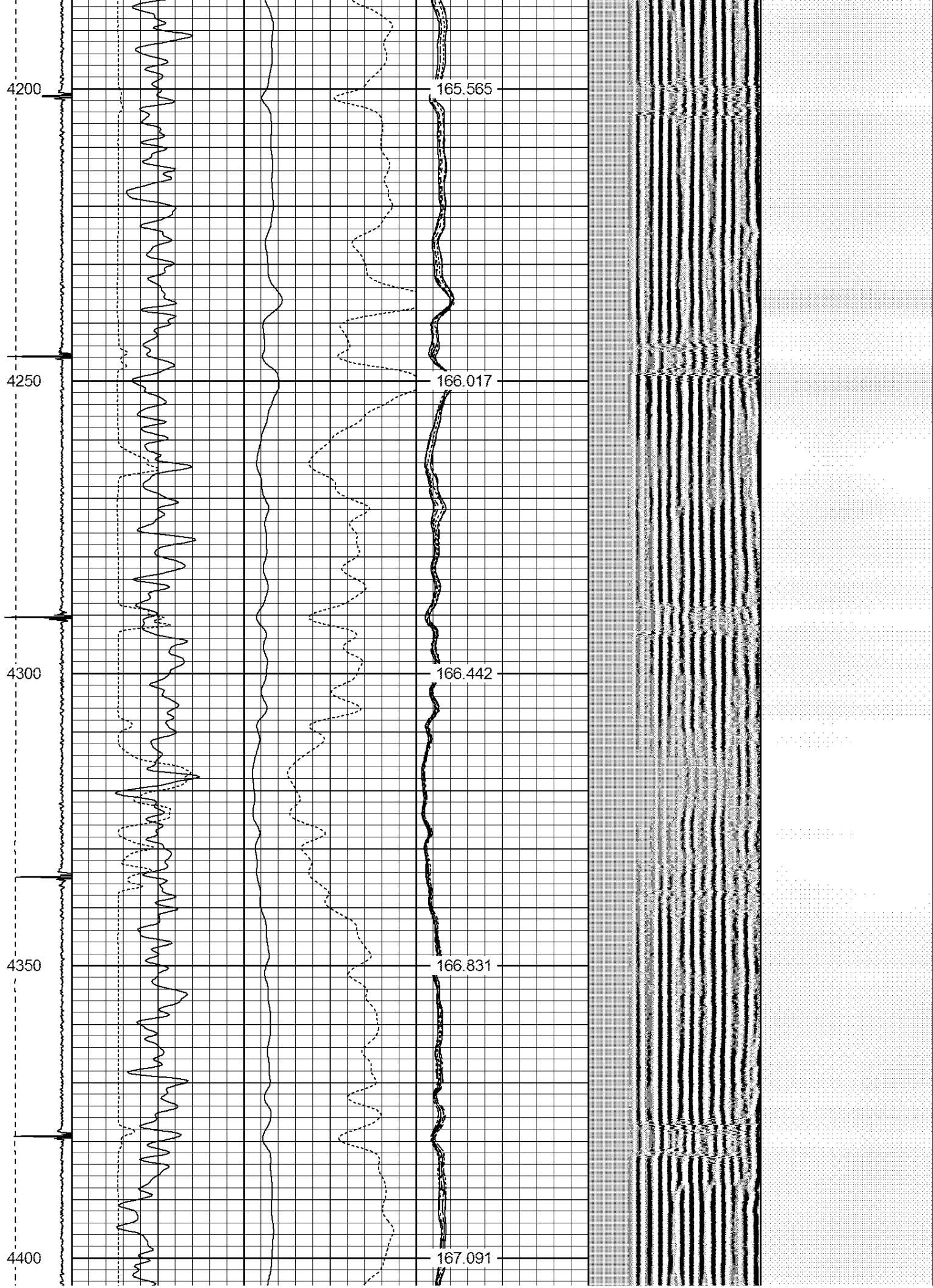
3950

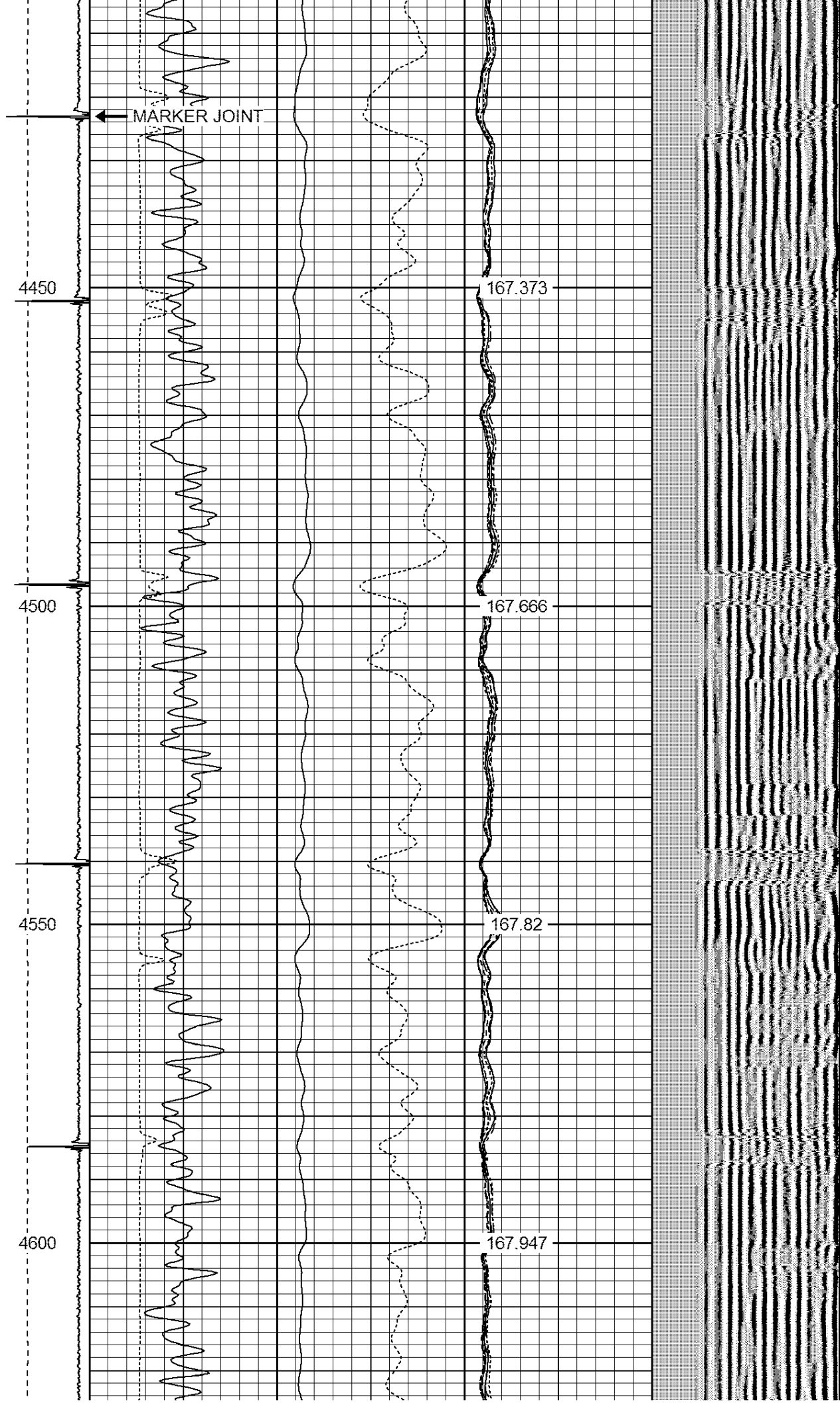
163.042

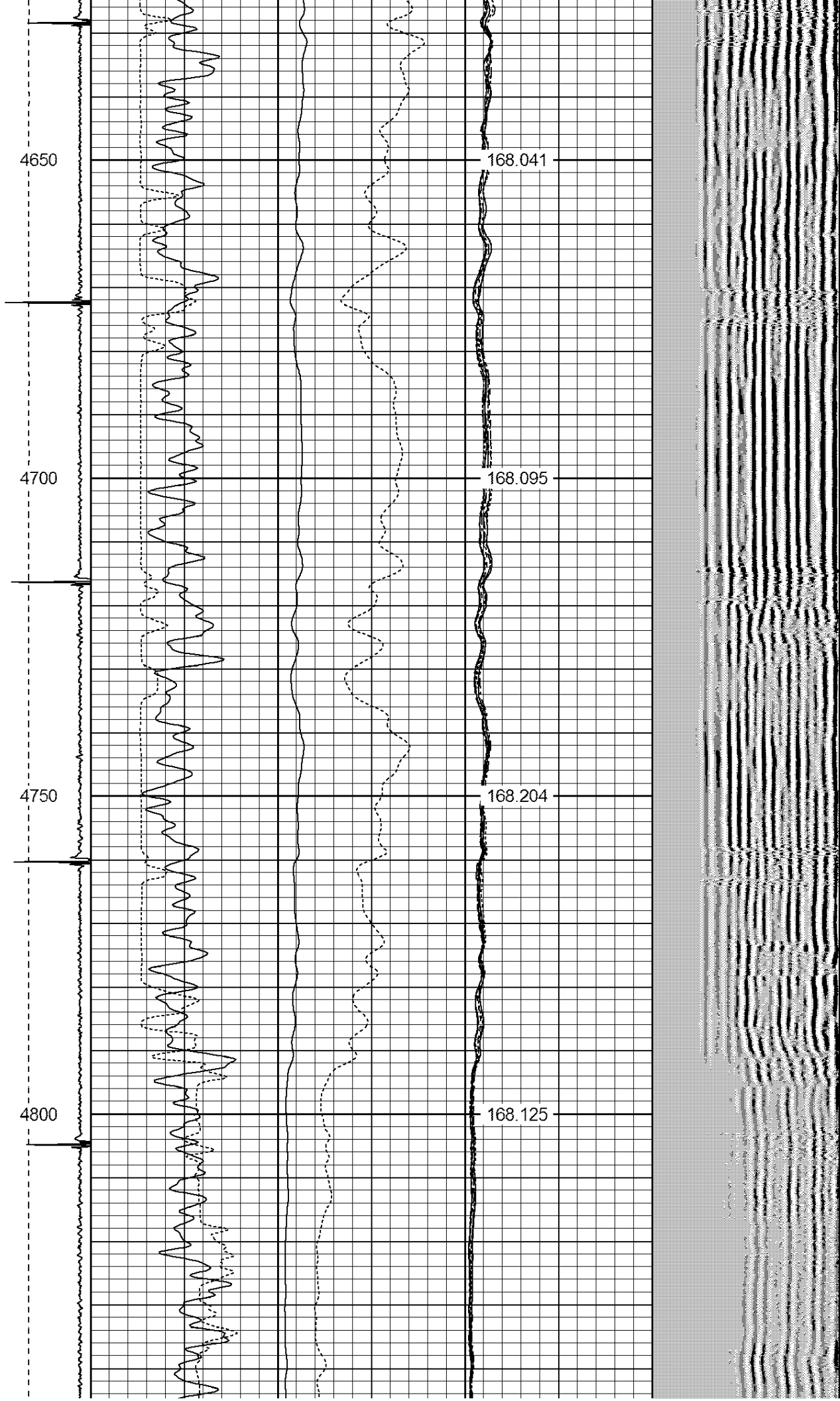












4850

168.017

4900

167.733

4950

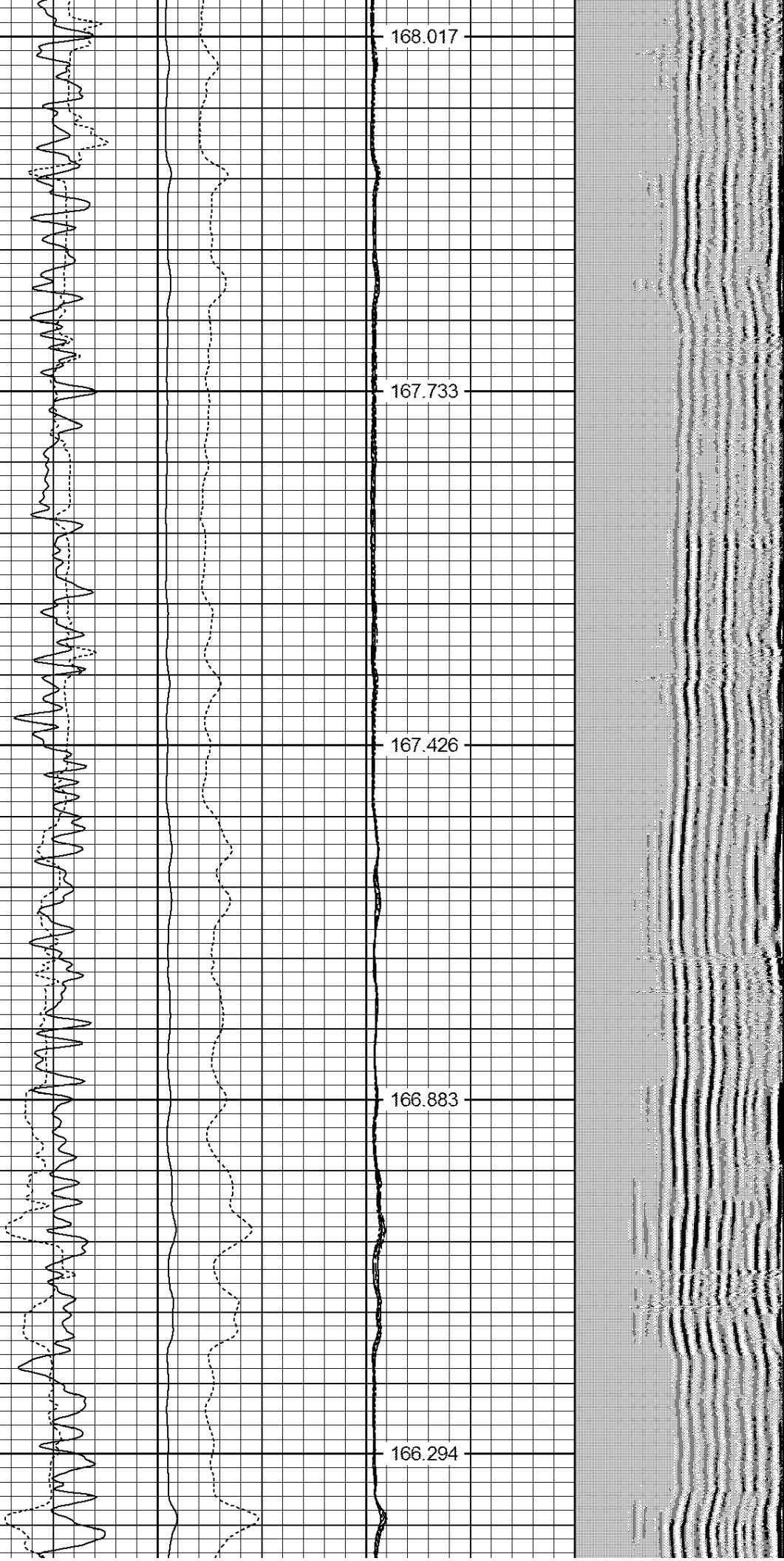
167.426

5000

166.883

5050

166.294



5100

165.522

5150

164.635

5200

163.525

5250

162.277

