

T7S, R97W, 6th P.M.

OXY USA WTP LP

Well location, SHELL #797-09-HN1 (SURFACE LOCATION), located as shown in TRACT 94 of Section 9, T7S, R97W, 6th P.M., Garfield County, Colorado.

BASIS OF ELEVATION

SPOT ELEVATION AT THE NORTHWEST CORNER OF SECTION 30, T5S, R95W, 6th P.M. TAKEN FROM THE FORKED GULCH QUADRANGLE, COLORADO, GARFIELD COUNTY, 7.5 MINUTE SERIES (TOPOGRAPHICAL MAP) PUBLISHED BY THE UNITED STATES DEPARTMENT OF THE INTERIOR, GEOLOGICAL SURVEY. SAID ELEVATION IS MARKED AS BEING 5966 FEET.

BASIS OF BEARINGS

BASIS OF BEARINGS IS A G.P.S. OBSERVATION.

LEGEND:

— = 90° SYMBOL

● = PROPOSED WELL HEAD.

▲ = SECTION CORNERS LOCATED.

△ = SECTION CORNERS RE-ESTABLISHED.

(Not Set on Ground.)



1000
500
0
500
1000

SCALE

CERTIFICATE

THIS IS TO CERTIFY THAT THE ABOVE PLAT WAS PREPARED FROM FIELD NOTES OF ACTUAL SURVEYS MADE BY ME OR UNDER MY SUPERVISION AND THAT THE SAME ARE TRUE AND CORRECT TO THE BEST OF MY KNOWLEDGE AND BELIEF.

REVISED: 08-19-14 T.B.
REVISED: 10-15-13 T.B.
REVISED: 10-11-13 T.B.
REVISED: 06-24-13 T.B.
REVISED: 01-16-08 C.G.

REGISTERED LAND SURVEYOR
REGISTRATION NO. 12345
STATE OF COLORADO
08-19-14

UTAH ENGINEERING & LAND SURVEYING

85 SOUTH 200 EAST - VERNAL, UTAH 84078

(435) 789-1017

SCALE

1" = 1000'

DATE SURVEYED:

07-16-07

DATE DRAWN:

08-01-07

PARTY

B.J. D.D. K.G.

REFERENCES
G.L.O. PLAT

WEATHER

WARM

FILE
OXY USA WTP LP

1923 Brass Cap,
0.5' High, File of
Stations
Lat: 39.467503"
Long: 108.214758"

1923 Brass Cap,
0.3' High
Lat: 39.467497"
Long: 108.224056"

1923 Brass Cap,
2.0' High
Lat: 39.467519"
Long: 108.220460"

S89°57'23"W - 2652.81' (Meas.)

SHELL #797-09-HN1
A Elev. Graded Ground = 5918'

Landing Point

TRACT 92

1923 Brass Cap,
1.0' High
Lat: 39.463639"
Long: 108.226833"

TRACT 94

1923 Brass Cap,
0.3' High
Lat: 39.463661"
Long: 108.231508"

True
Position
178.20'
(G.L.O.)

M.C.
1923 Brass Cap,
2.5' High
Lat: 39.459717"
Long: 108.214769"

TRACT 93

NOTE:
THE PROPOSED TARGET BOTTOM HOLE FOR
THIS WELL IS LOCATED IN TRACT 107 OF
SECTION 16, T7S, R97W, 6th P.M. AT 1935'
FNL 2358' FWL IT BEARS S00°13'44"E
5934.95' FROM THE PROPOSED LANDING
POINT.

N89°44'03"W - 5261.63' (Meas.)

M.C.
1923 Brass Cap,
1.5' High
Lat: 39.453414"
Long: 108.214738"

Target Bottom Hole

PDOP = 2.7

NAD 83 (SURFACE LOCATION)	
NAD 83 (LANDING POINT)	NAD 83 (SURFACE LOCATION)
LATITUDE = 39°27'50.16" (39.463933)	LATITUDE = 39°27'59.65" (39.466569)
LONGITUDE = 108°13'32.74" (108.225761)	LONGITUDE = 108°13'32.80" (108.225778)
NAD 27 (SURFACE LOCATION)	
NAD 27 (LANDING POINT)	NAD 27 (SURFACE LOCATION)
LATITUDE = 39°27'50.24" (39.463958)	LATITUDE = 39°27'59.73" (39.466592)
LONGITUDE = 108°13'30.44" (108.225122)	LONGITUDE = 108°13'30.50" (108.225139)

N00°21'28"W - 2638.80' (Meas.)

S00°01'19"E - 2651.94' (Meas.)

1928 Brass Cap
1.0' High
Lat: 39.429733"
Long: 108.171019"

OXY USA WTP LP

Well location, SHELL #797-09-HN1 (TARGET BOTTOM HOLE), located as shown in TRACT 109 of Section 16, T7S, R97W, 6th P.M., Garfield County, Colorado.

BASIS OF ELEVATION

SPOT ELEVATION AT THE NORTHWEST CORNER OF SECTION 30, T5S, R9SW, 6th P.M. TAKEN FROM THE FORKED GULCH QUADRANGLE, COLORADO, GARFIELD COUNTY, 7.5 MINUTE SERIES (TOPOGRAPHICAL MAP) PUBLISHED BY THE UNITED STATES DEPARTMENT OF THE INTERIOR, GEOLOGICAL SURVEY. SAID ELEVATION IS MARKED AS BEING 5966 FEET.

BASIS OF BEARINGS

BASIS OF BEARINGS IS A G.P.S. OBSERVATION.

LEGEND:

- L = 90° SYMBOL
 ● = PROPOSED WELL HEAD.
 ▲ = SECTION CORNERS LOCATED.
 △ = SECTION CORNERS
 RE-ESTABLISHED.
 (Not Set on Ground.)



SCALE

CERTIFICATE

THIS IS TO CERTIFY THAT THE ABOVE PLATS WERE PREPARED FROM THE FIELD NOTES OF ACTUAL SURVEYS MADE BY ME OR UNDER MY SUPERVISION AND THAT THE SAME ARE TRUE AND CORRECT TO THE BEST OF MY KNOWLEDGE AND BELIEF.

REVISED:	08-19-14	T.B.
REVISED:	10-15-13	T.B.
REVISED:	10-11-13	T.B.
REVISED:	06-24-13	T.B.

UTAH ENGINEERING & LAND SURVEYING

85 SOUTH 200 EAST - VERNAL UTAH 84078

(435) 789-1017

SCALE	DATE SURVEYED:	DATE DRAWN:
-------	----------------	-------------

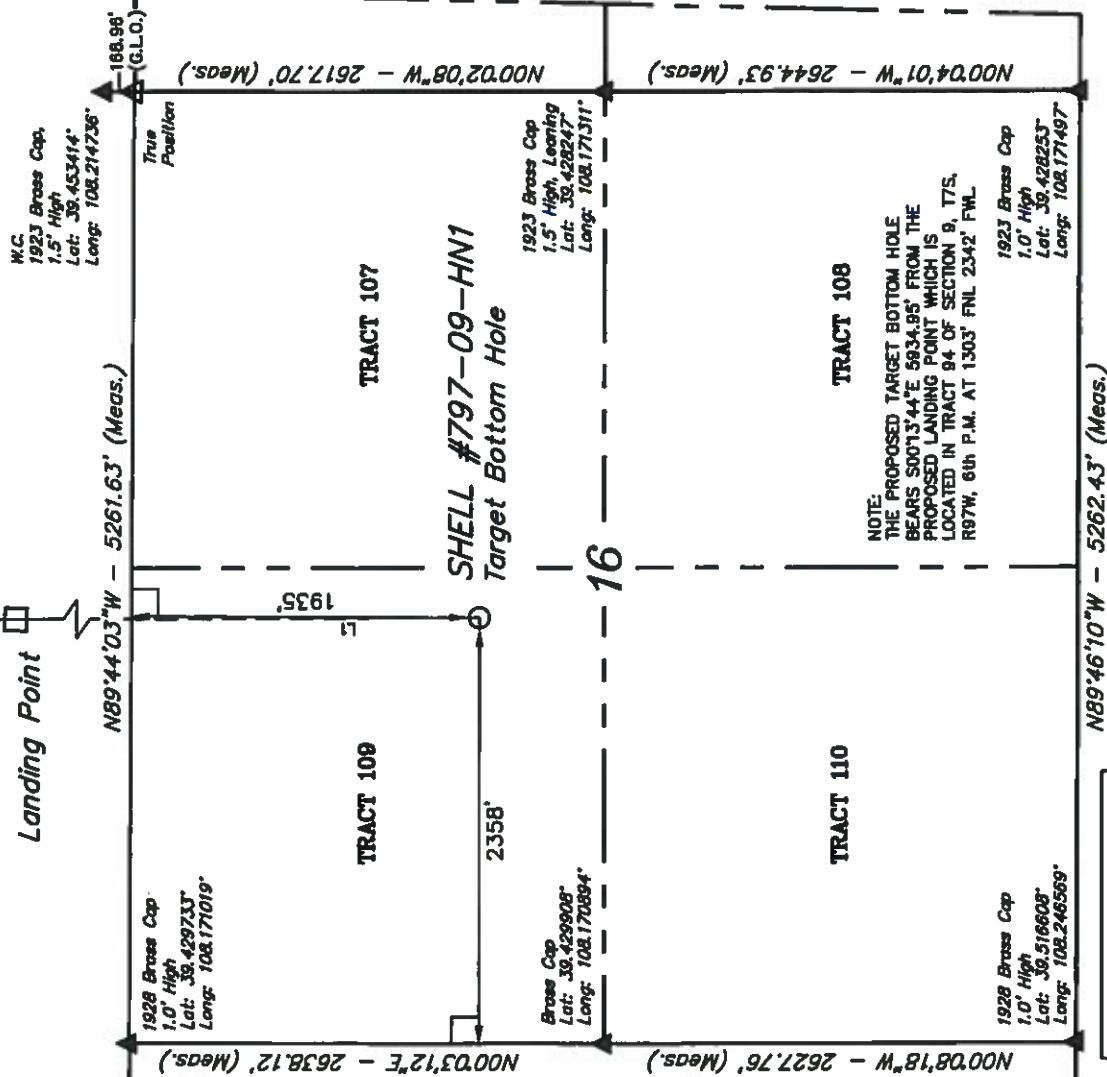
08-01-07

REFERENCES

G.L.O. PLAT

313

OXY ISA WTP IP



NOTE:

THE PROPOSED TARGET BOTTOM HOLE BEARS S001°3'44"E 5834.85' FROM THE PROPOSED LANDING POINT WHICH IS LOCATED IN TRACT 94 OF SECTION 9, T7S, R97W, 6th P.M. AT 1303' FNL 2342' FWL.

1923 Brass Cap
1.0" High
Lot: 39.428253
Long: 108.171497

NAD BJ (TARGET BOTTOM HOLE)

LATITUDE = 39°26'51.52" (39.447844)

LONGITUDE = 108-13.32.34 (108.225650)
NAD 83 TARGET BOTTOM HOLE

LATITUDE = 39°28'51.60" (39.447867)

LINE TABLE		
LINE	DIRECTION	LENGTH
L1	S007°3'44"E	5834.95'
L2	S007°3'32"E	960.35'