

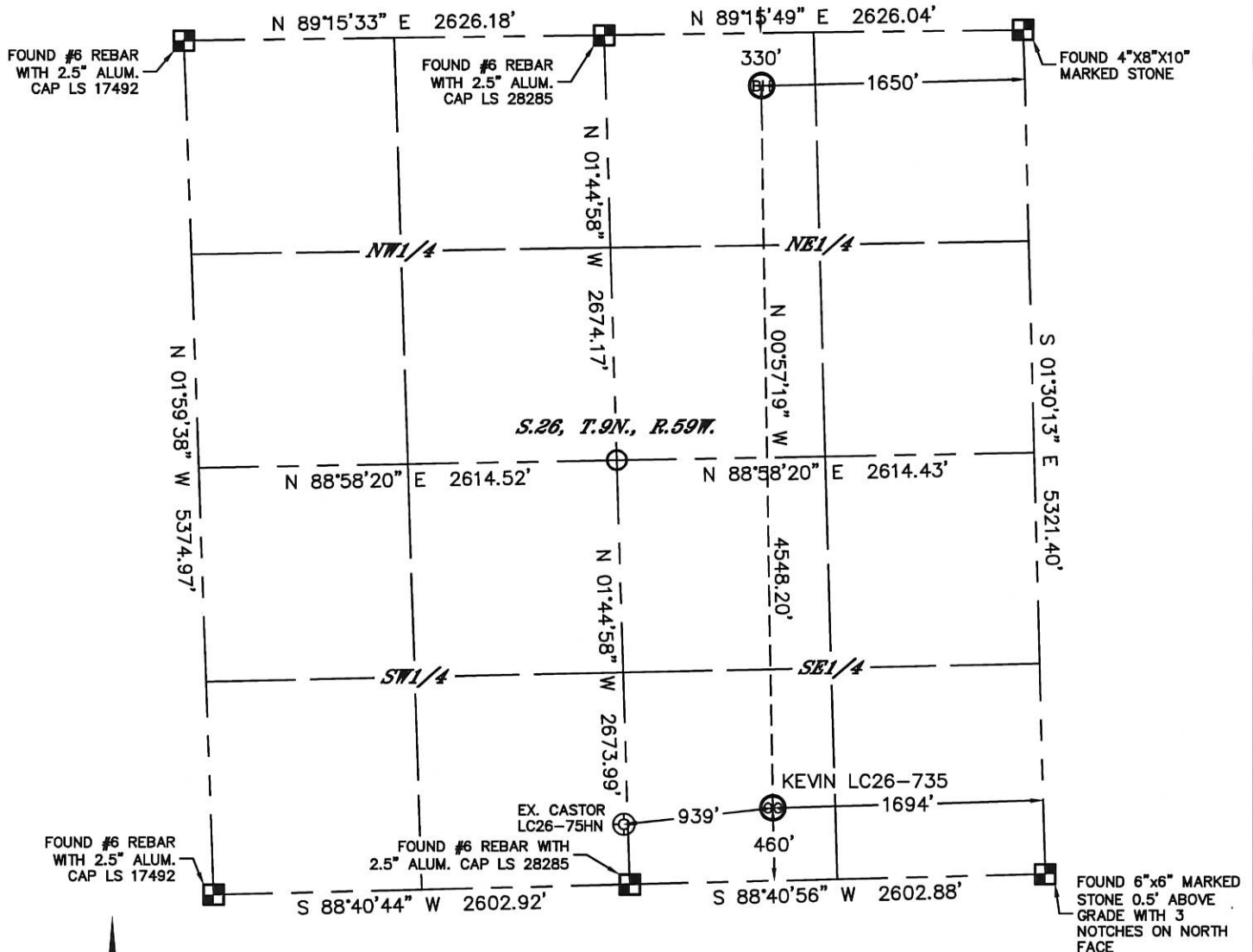


Lat40°, Inc. 1635 Foxtrail Drive, Suite 325 Loveland, CO 970-776-3321

WELL LOCATION CERTIFICATE

THIS MAP DOES NOT REPRESENT A BOUNDARY SURVEY

SECTION: 26
TOWNSHIP: 9N
RANGE: 59W



In accordance with a request from Cody Ball with Noble Energy Inc.

Lat40°, Inc. has determined the surface location of the KEVIN LC26-735 to be 460' from the SOUTH line and 1694' from the EAST line and the bottom hole to be 330' from the NORTH line and 1650' from the EAST line as measured at right angles from the section lines of Section 26, Township 9 North, Range 59 West of the Sixth Principal Meridian, County of Weld, State of Colorado.

I hereby state that this Well Location Certificate was prepared by me, or under my direct supervision, that the fieldwork was completed on 7/24/2014, for and on behalf of Noble Energy Inc. That this is not a Land Survey Plat or an Improvement Survey Plat, and that it is not to be relied upon for establishment of fence, building, or other future improvement lines.

NOTE:

- 1) Bearings shown are Grid Bearings of the Colorado State Plane Coordinate System, North Zone, North American Datum 1983/2007. The lineal dimensions are contained herein are based upon the "U.S. Survey Foot."
 - 2) Ground elevations are based on an observed GPS elevation (NAVD 1988 DATUM).
 - 3) IMPROVEMENTS: See LOCATION DRAWING for all visible improvements within 500' of disturbed area.
 - 4) SURFACE USE: RANGELAND
 - 5) INSTRUMENT OPERATOR: BRIAN ROTTINGHAUS
 - 6) NEAREST EXISTING WELL: CASTOR LC26-75HN, 939' SW
- NEAREST CULTURAL ITEMS:
BUILDING: 5280'+
BUILDING UNIT: 5280'+
HIGH OCCUPANCY BUILDING UNIT: 5280'+
DESIGNATED OUTSIDE ACTIVITY AREA: 5280'+
PUBLIC ROAD: 5280'+
ABOVEGROUND UTILITY: 370' S
RAILROAD: 5280'+
PROPERTY LINE: 391' E

SURFACE LOCATION

LAT: 40.71561°N
LONG: 103.94159°W
PDOP: 1.6
ELEV: 4850'
1/4, 1/4: SW1/4SE1/4

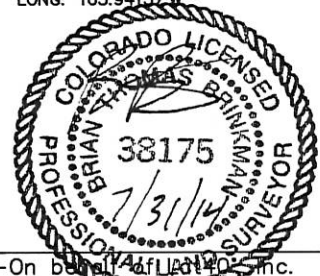
BOTTOM HOLE

LAT: 40.72809°N
LONG: 103.94157°W

LEGEND

- = ALIQUOT MONUMENT AS DESCRIBED
○ = CALCULATED POSITION

Brian T. Brinkman—On behalf of Lat40°, Inc.
Colorado Licensed Professional Land Surveyor No. 38175
DATE: 7/31/2014
PROJECT#: 2013186

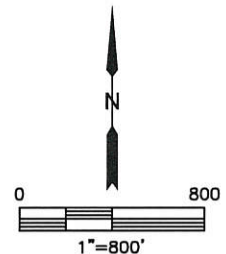
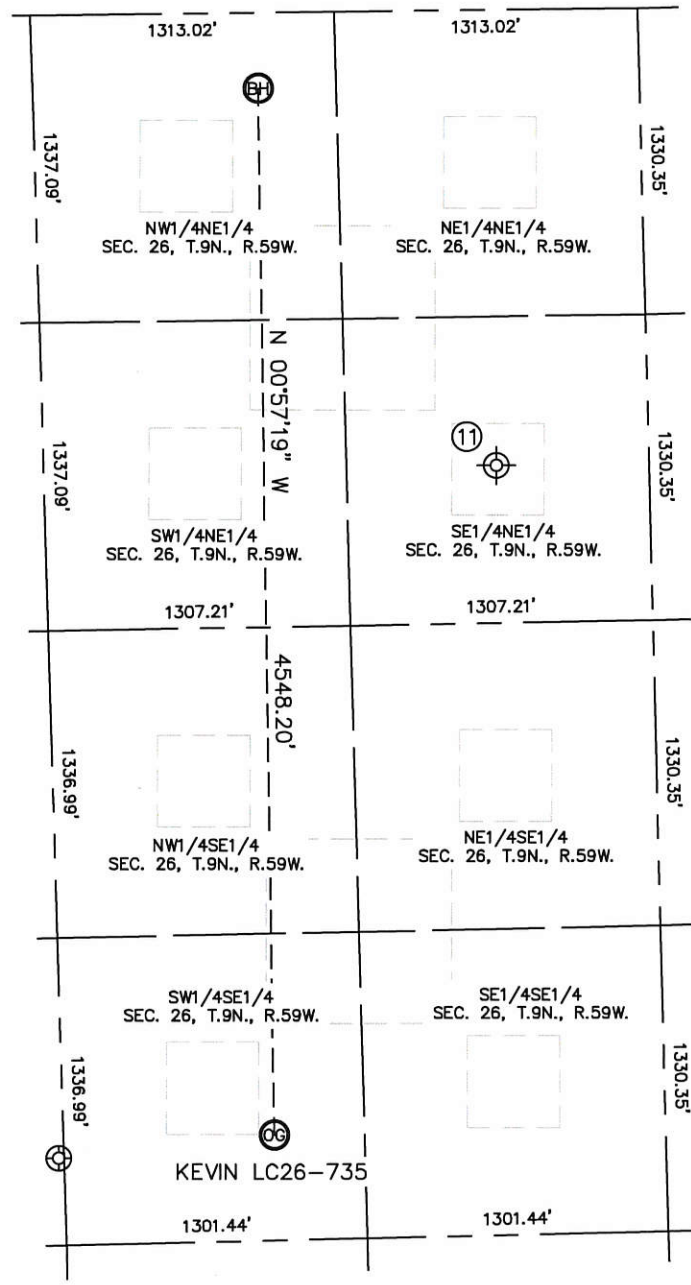


Lat40°, Inc. 1635 Foxtrail Drive, Suite 325 Loveland, CO 970-776-3321

SITE SKETCH

KEVIN LC26-735

SECTION: 26
TOWNSHIP: 9N
RANGE: 59W



WELL NO.	WELL NAME	SHL FOOTAGE				SHL LAT°	SHL LONG°	PDOP	ELEV (FT.)	1/4/1/4
11	MERRILL 1 (D/A)	1980	FNL	660	FEL	40.72354	-103.93793	NA	4863	SENE

NOTE: THE ABANDONED WELL DATA SHOWN IN RED ABOVE WAS OBTAINED FROM COGCC SCOUT CARDS.

DATE: 7/31/2014
PROJECT#: 2013186