

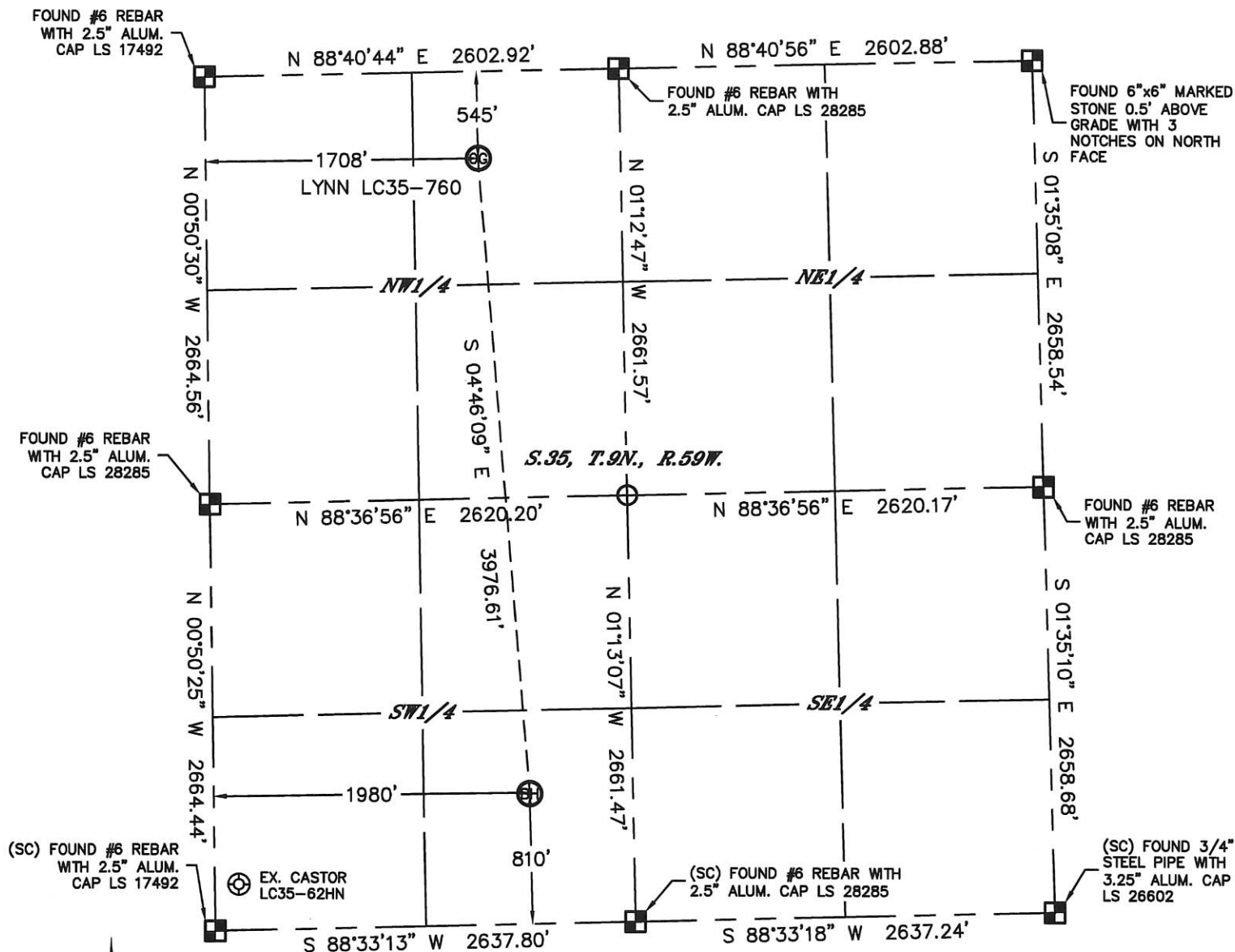


Lat40°, Inc. 1635 Foxtrail Drive, Suite 325 Loveland, CO 970-776-3321

# WELL LOCATION CERTIFICATE

THIS MAP DOES NOT REPRESENT A BOUNDARY SURVEY

SECTION: 35  
TOWNSHIP: 9N  
RANGE: 59W



In accordance with a request from Brian James with Noble Energy Inc. Lat40°, Inc. has determined the surface location of the LYNN LC35-760 to be 545' from the NORTH line and 1708' from the WEST line and the bottom hole to be 810' from the SOUTH line and 1980' from the WEST line as measured at right angles from the section lines of Section 35, Township 9 North, Range 59 West of the Sixth Principal Meridian, County of Weld, State of Colorado.

I hereby state that this Well Location Certificate was prepared by me, or under my direct supervision, that the fieldwork was completed on 2/13/2014, for and on behalf of Noble Energy Inc. That this is not a Land Survey Plat or an Improvement Survey Plat, and that it is not to be relied upon for establishment of fence, building, or other future improvement lines.

## NOTE:

- 1) Bearings shown are Grid Bearings of the Colorado State Plane Coordinate System, North Zone, North American Datum 1983/2007. The lineal dimensions as contained herein are based upon the "U.S. Survey Foot."
  - 2) Ground elevations are based on an observed GPS elevation (NAVD 1988 DATUM).
  - 3) IMPROVEMENTS: See LOCATION DRAWING for all visible improvements within 500' of disturbed area.
  - 4) SURFACE USE: RANGELAND
  - 5) INSTRUMENT OPERATOR: BRIAN ROTTINGHAUS
  - 6) NEAREST EXISTING WELL: CASTOR LC35-62HN, 4771' SW
- NEAREST CULTURAL ITEMS:  
BUILDING: 5280'+  
BUILDING UNIT: 5280'+  
HIGH OCCUPANCY BUILDING UNIT: 5280'+  
DESIGNATED OUTSIDE ACTIVITY AREA: 5280'+  
PUBLIC ROAD: 5280'+  
ABOVEGROUND UTILITY: 611' N  
RAILROAD: 5280'+  
PROPERTY LINE: 545' N

**SURFACE LOCATION**  
LAT: 40.71283N  
LONG: 103.94808W  
PDOP: 2.9  
ELEV: 4813'  
1/4, 1/4: NE1/4NW1/4

**BOTTOM HOLE**  
LAT: 40.70194N  
LONG: 103.94714W



## LEGEND

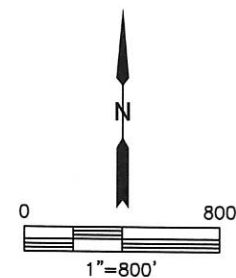
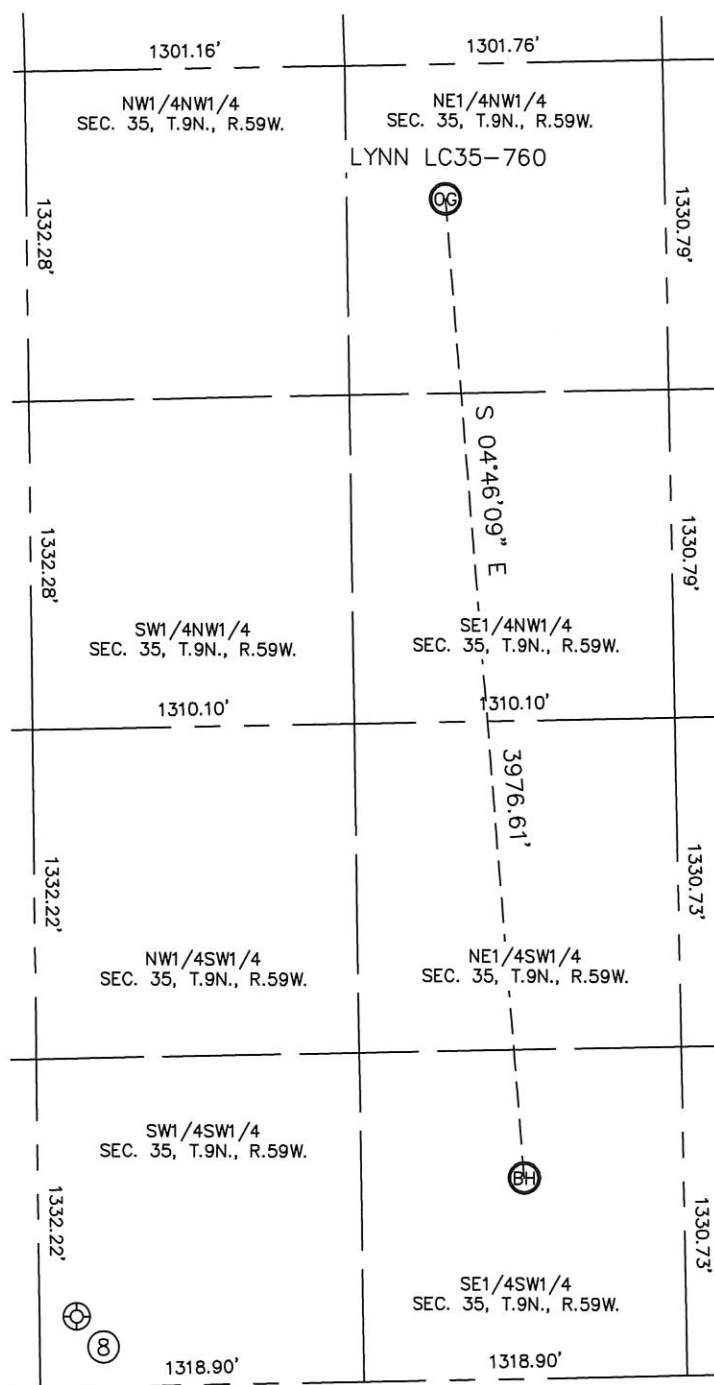
- = ALIQUOT MONUMENT AS DESCRIBED  
○ = CALCULATED POSITION

Brian T. Brinkman—Lat40°, Inc.  
Colorado Licensed Professional Land Surveyor  
No. 38175  
DATE: 5/30/2014  
PROJECT#: 2013186



## SITE SKETCH

LYNN LC35-760

SECTION: 34  
TOWNSHIP: 9N  
RANGE: 59W

WELL NO.	WELL NAME	SHL FOOTAGE				SHL LAT°	SHL LONG°	PDOP	ELEV (FT.)	1/4/1/4
8	CASTOR LC35-62HN	287	FSL	150	FWL	40.70047	-103.95374	1.9	4838	SWSW