

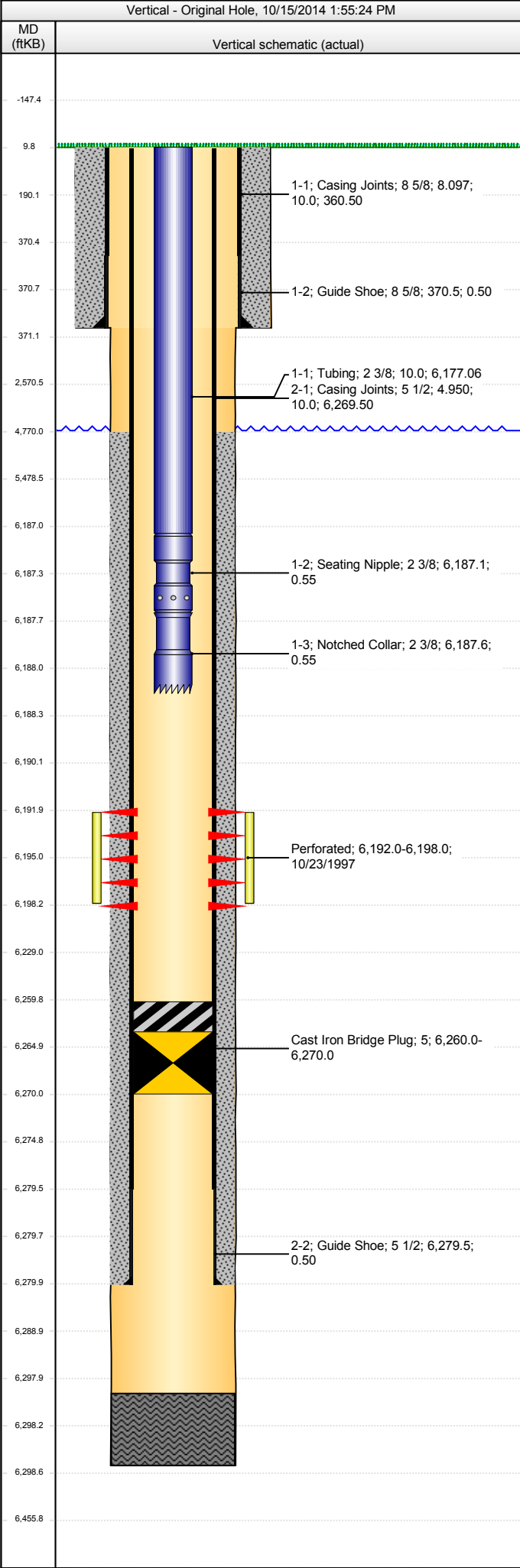


Whiting Oil & Gas Corp
1700 Broadway, Suite 2300
Denver, CO 80290
(303) 837-1661

WOGC Well History Schematic Report

Well Name: MOTIS 2

API Number 051231944500		WPC ID 1CO076801			Well Permit Number 19970705			Field Name Cedar Valley			County Weld		State CO		
Well Configuration Type Vertical				Orig KB Elv (ft) 4,670.00		Ground Elevation (ft) 4,660.00		Casing Flange Elevation (ft)			Tubing Head Elevation (ft)		Total Depth (ftKB) 6,298.5		
Original Spud Date 9/16/1997		Completion Date 12/1/1997		Asset Group Redtail			Responsible Engineer Andrew Fish			N/S Dist (ft) 2,380.0		N/S Ref FNL	E/W Dist (ft) 600.0		E/W Ref FEL
Lot	Quarter 1 SE	Quarter 2 NE	Quarter 3	Quarter 4	Section 1	Section Suffix	Section Type	Township 9	Township N/S Dir N	Range 58	Range E/W Dir W	Meridian			



Jobs							
Job Type			Start Date		Summary		
Drill & Complete			9/16/1997				
Perforations							
Type of Hole		Date		Top (ftKB)		Btm (ftKB)	
Perforated		10/23/1997		6,192.0		6,198.0	
Stim/Treat Stages							
Stage Type	Start Date	Top (ftKB)	Btm (ftKB)	Stim/Treat Fluid		Vol Clean Pump (bbl)	
Breakdown	11/6/1997	6,192.0	6,198.0	48 balls, lease, Crude		130.00	
Frac	12/4/1997	6,192.0	6,198.0	26960# 20/40 snd, 5000# 16/30 RCS,, Gelled Diesel		516.00	
Wellbore Sections							
Section Des	Wellbore Name	Size (in)	Act Top (ftKB)	Act Btm (ftKB)	Start Date	End Date	
Surface	Original Hole	12 1/4	10.0	371.0	9/16/1997	9/16/1997	
Production	Original Hole	7 7/8	371.0	6,298.5	9/17/1997	9/20/1997	
Surface Csg, 371.0ftKB							
Comment					Run Date 9/16/1997		
OD (in)	Wt (lb/ft)	Grade	Top (ftKB)	Btm (ftKB)	Len (ft)	Item Des	
8 5/8	24.00	J-55	10.0	370.5	360.50	Casing Joints	
8 5/8			370.5	371.0	0.50	Guide Shoe	
Production Csg, 6,280.0ftKB							
Comment					Run Date 9/21/1997		
OD (in)	Wt (lb/ft)	Grade	Top (ftKB)	Btm (ftKB)	Len (ft)	Item Des	
5 1/2	15.50	J-55	10.0	6,279.5	6,269.50	Casing Joints	
5 1/2			6,279.5	6,280.0	0.50	Guide Shoe	
Cement Stages							
Des			Top (ftKB)	Btm (ftKB)	Top Meas Meth		Pump Start Date
Surface Casing Cement			10.0	371.0			9/16/1997
Production Casing Cement			4,770.0	6,280.0			9/21/1997
Cmt below shoe			6,280.0	6,298.5			9/21/1997
Bttom hole cmt			6,298.0	6,298.5			10/15/1997
Other In Hole							
Des		OD (in)	ID (in)	Run Date	Top (ftKB)	Btm (ftKB)	
Fillup		5 1/2		10/19/1997	6,291.0	6,298.0	
Cast Iron Bridge Plug		5		10/22/1997	6,260.0	6,270.0	
Tubing - Production set at 6,188.2ftKB on 12/6/1997 06:00							
Set Depth (ftKB) 6,188.2		Comment			Run Date 12/6/1997		Pull Date
Item Des			OD (in)	Len (ft)	Top (ftKB)	Btm (ftKB)	
Tubing			2 3/8	6,177.06	10.0	6,187.1	
Seating Nipple			2 3/8	0.55	6,187.1	6,187.6	
Notched Collar			2 3/8	0.55	6,187.6	6,188.2	
<des> on <dtmrun>							
Rod Description					Run Date		
Item Des			OD (in)	Len (ft)	Top (ftKB)	Btm (ftKB)	

Com
Last Production 06/30/2011.