

1801 Broadway
Suite 500
Denver, Colorado 80202



Allison Linz
Regulatory Technician
Tel: 303.398.0355
E-mail: alinz@gwogco.com

October 13, 2014

Colorado Oil and Gas Conservation Commission
1120 Lincoln Street, Suite 801
Denver, Colorado 80203

RE: **Proposed Wellbore Spacing Unit**
Burr FD 23-299HN

Niobrara New Drill
Township 6 North, Range 67 West, 6th P.M.
Section 23
Weld County, Colorado

Dear Director:

Great Western Operating Company, LLC is planning to drill the above captioned well in accordance with the provisions of COGCC Rule 318A.e.

Great Western proposed wellbore spacing unit consists of:

- **S2 SEC 23: S2 SEC 24**
- **640 acres**

The 30 day notification time period has past and we have not received any objections to such well locations or proposed spacing unit, therefore Great Western hereby requests the Director to approve the above mentioned well. Great Western Operating Company, LLC respectfully requests that the COGCC review the enclosed map illustrating the proposed wellbore spacing unit.

Respectfully,

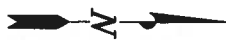
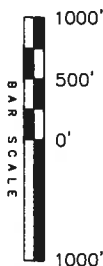
Allison Linz

Allison Linz
Regulatory Technician
Great Western Operating Company, LLC

GREAT WESTERN OIL & GAS COMPANY

WELL LOCATION, BURR FD 23-299HN,
LOCATED AS SHOWN IN THE SE 1/4
SE 1/4 OF SECTION 24, T6N, R67W,
6th P.M. WELD COUNTY, COLORADO.

TARGET BOTTOM HOLE, BURR FD 23-299HN,
LOCATED AS SHOWN IN THE NW 1/4 SW 1/4
OF SECTION 23, T6N, R67W, 6th P.M.
WELD COUNTY, COLORADO.



1. Well footages are measured at right

2. Bearings are based on Global Positioning Satellite observations.

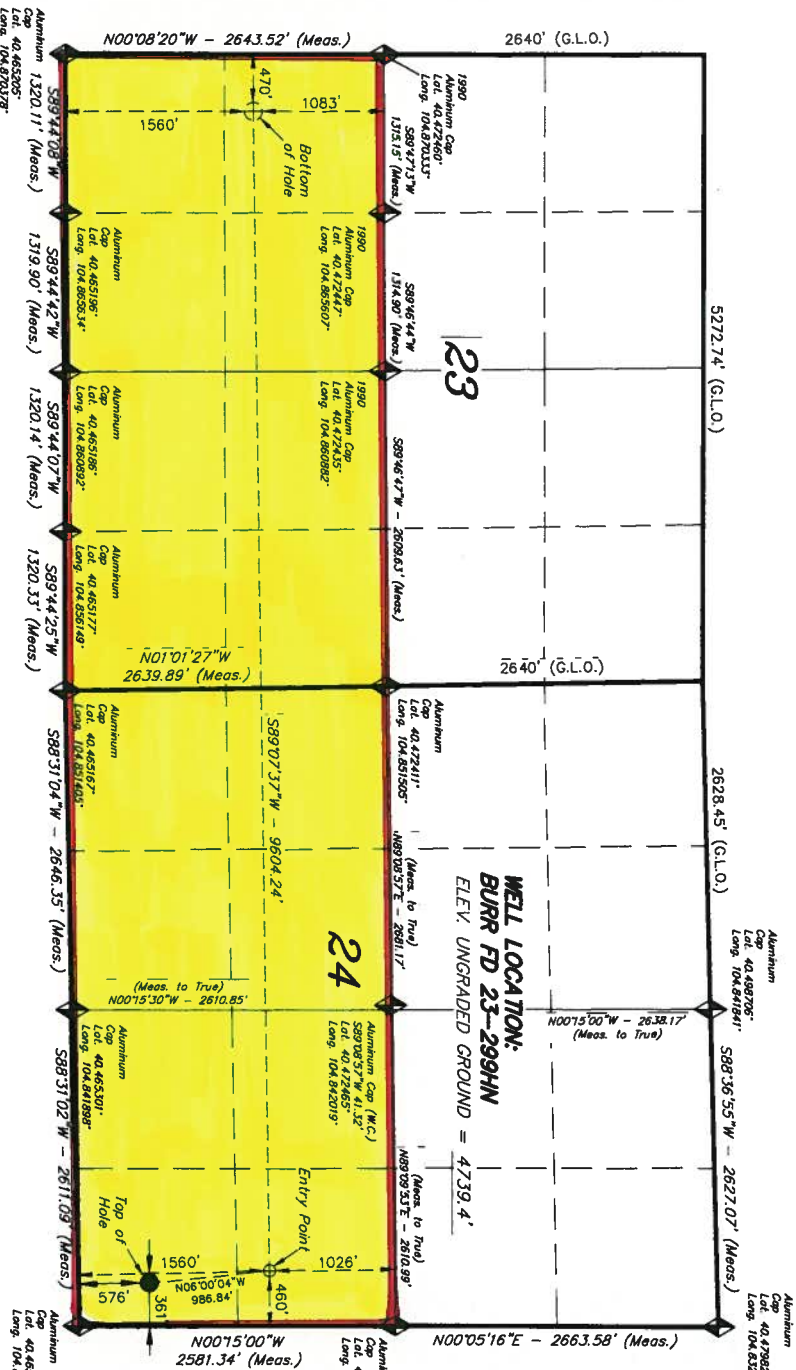
3. G.P.S. operator: C. Stewart, (PDOP) = 1.2

IMPROVEMENT NOTE:

See addendum to legal plat (Sheet 2a & 2b, for visible improvements within 500' of the proposed location.

THIS IS TO CERTIFY THAT THE ABOVE PLAT WAS PREPARED FROM FIELD NOTES OF REALITY SURVEYS MADE BY ME OR UNDER MY SUPERVISION. THE LOCATION HAS BEEN STATED ON THE RECORD AS SHOWN ON THE PLAT AND THAT THE SAME ARE TRUE AND CORRECT TO THE BEST OF MY KNOWLEDGE AND BELIEF. 08-21-14

REGISTERED LAND SURVEYOR
REGISTRATION NO. 30125
STATE OF COLORADO
SURVEYOR



 = SECTION CORNERS LOCATED

BASIS OF ELEV. Elevations are based on an N.G.S. OPUS Correction. LOCATION: LAT. 40°27'42.74" LONG. 104°51'11.32" (Tristate Aluminum Cap GW1) NAVD 88 Elev. 4760.86

| MAD 63 (ENTRY POINT) | | MAD 63 (EXIT POINT) | |
|------------------------------------|------------------------------------|------------------------------------|------------------------------------|
| LATITUDE = 40.2501.18° (04.460867) | LATITUDE = 40.2210.14° (04.465483) | LATITUDE = 40.2501.18° (04.460867) | LATITUDE = 40.2210.14° (04.465483) |
| LONGITUDE = 10.5201.85 (04.831509) | LONGITUDE = 10.5201.85 (04.831513) | LONGITUDE = 10.5201.85 (04.831509) | LONGITUDE = 10.5201.85 (04.831513) |
| MAD 27 (ENTRY POINT) | | MAD 27 (EXIT POINT) | |
| LATITUDE = 40.2493.25° (04.467051) | LATITUDE = 40.2210.21° (04.466501) | LATITUDE = 40.2493.25° (04.467051) | LATITUDE = 40.2210.21° (04.466501) |
| LONGITUDE = 10.5201.05 (04.833527) | LONGITUDE = 10.5201.05 (04.833527) | LONGITUDE = 10.5201.05 (04.833527) | LONGITUDE = 10.5201.05 (04.833527) |

| | | |
|--|-------------------|--------------------|
| TRI STATE LAND SURVEYING & CONSULTING 180 NORTH VERNAL AVE. - VERNAL, UTAH 84078 (435) 781-2501 | | |
| DATE SURVEYED: | SURVEYED BY: C.S. | SHEET 1d |
| 07-08-14 | | |
| DATE DRAWN: | DRAWN BY: R.V.C. | |
| 07-13-14 | | |
| REVISION: | SCALE: 1" = 1000' | |
| 08-21-14 M.W. | | |