

# BONANZA CREEK OIL COMPANY

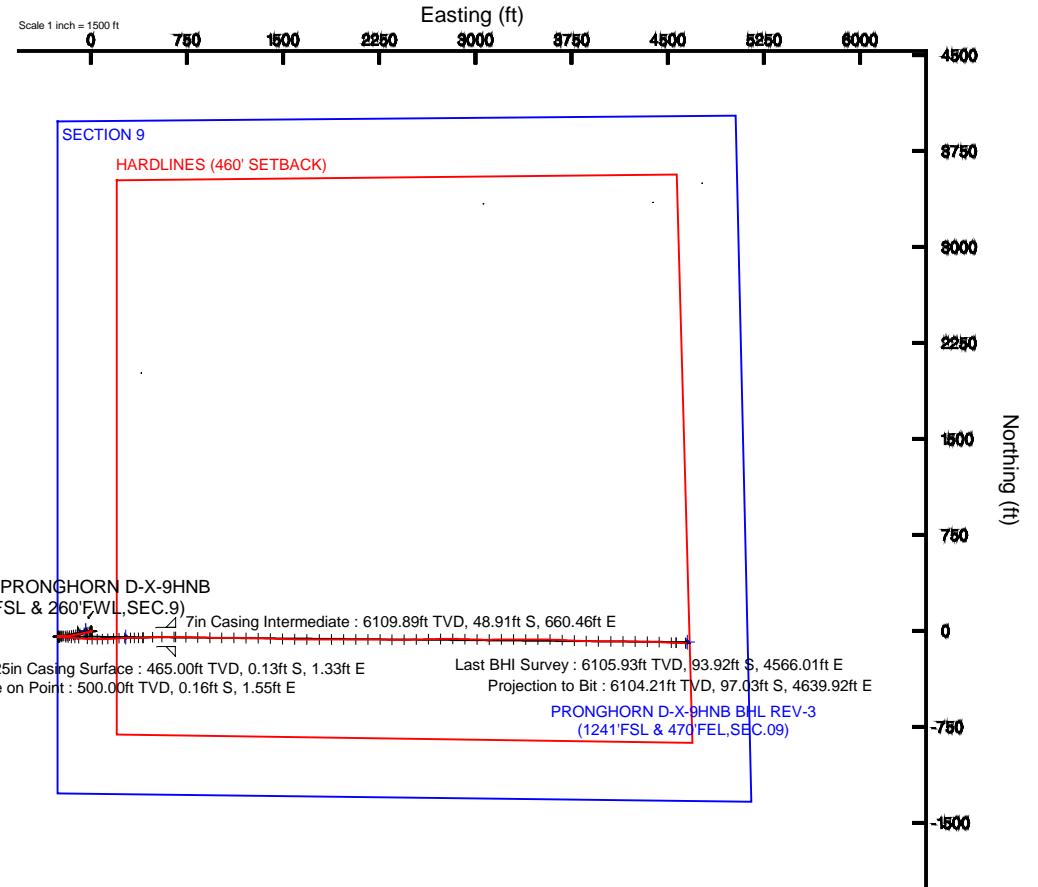
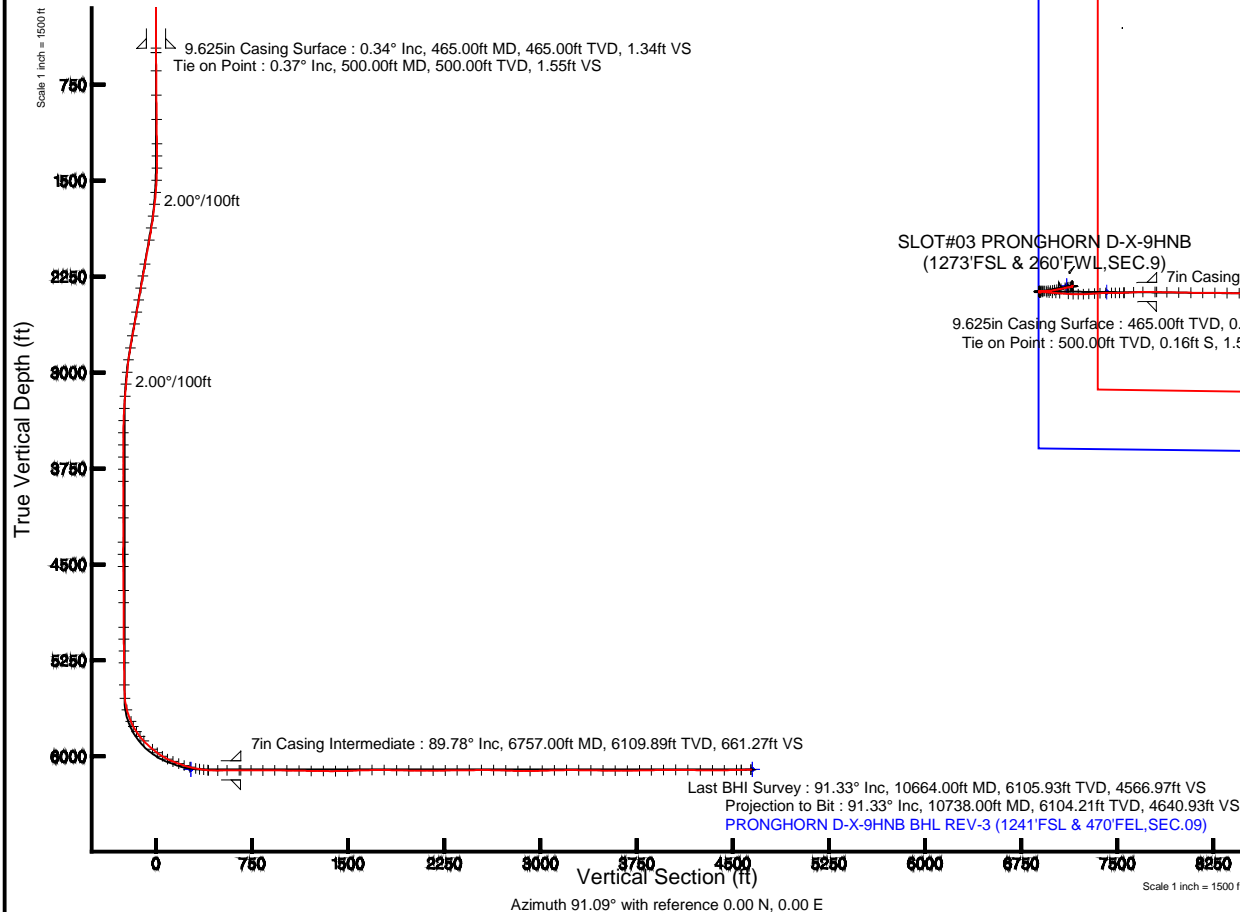
Location: COLORADO Slot: SLOT#03 PRONGHORN D-X-9HNB (1273'FSL & 260'FWL,SEC.9)  
Field: WELD COUNTY Well: PRONGHORN D-X-9HNB  
Facility: SEC.09-T5N-R61W Wellbore: PRONGHORN D-X-9HNB PWB

Plot reference wellpath is PRONGHORN D-X-9HNB (REV-C.0) PWP

True vertical depths are referenced to RIG (RKB)	Grid System: NAD83 / Lambert Colorado SP, Northern Zone (501), US feet
Measured depths are referenced to RIG (RKB)	North Reference: True north
RIG (RKB) to Mean Sea Level: 4654 feet	Scale: True distance
Mean Sea Level to Mud line (At Slot: SLOT#03 PRONGHORN D-X-9HNB (1273'FSL & 260'FWL,SEC.9)): 0 feet	Depths are in feet
Coordinates are in feet referenced to Slot	Created by: guenaler on 10/25/2014

## Location Information

Facility Name				Grid East (US ft)	Grid North (US ft)	Latitude	Longitude
SEC.09-T5N-R61W				3356616.206	1395470.987	40°24'42.984"N	104°13'22.368"W
Slot	Local N (ft)	Local E (ft)		Grid East (US ft)	Grid North (US ft)	Latitude	Longitude
SLOT#03 PRONGHORN D-X-9HNB (1273'FSL & 260'FWL,SEC.9)	0.00	38.99		3356655.186	1395471.549	40°24'42.984"N	104°13'21.864"W
RIG (RKB) to Mud line (At Slot: SLOT#03 PRONGHORN D-X-9HNB (1273'FSL & 260'FWL,SEC.9))						4654ft	
Mean Sea Level to Mud line (At Slot: SLOT#03 PRONGHORN D-X-9HNB (1273'FSL & 260'FWL,SEC.9))						0ft	
RIG (RKB) to Mean Sea Level						4654ft	



BGGM (1945.0 to 2016.0) Dip: 67.03° Field: 52767.3 nT  
Magnetic North is 8.24 degrees East of True North (at 7/18/2014)

To correct azimuth from Magnetic to True add 8.24 degrees



# Actual Wellpath Report

PRONGHORN D-X-9HNB AWP

Page 1 of 8



## REFERENCE WELLPATH IDENTIFICATION

Operator	BONANZA CREEK OIL COMPANY	Slot	SLOT#03 PRONGHORN D-X-9HNB (1273'FSL & 260'FWL,SEC.9)
Area	COLORADO	Well	PRONGHORN D-X-9HNB
Field	WELD COUNTY	Wellbore	PRONGHORN D-X-9HNB AWB
Facility	SEC.09-T5N-R61W		

## REPORT SETUP INFORMATION

Projection System	NAD83 / Lambert Colorado SP, Northern Zone (501), US feet	Software System	WellArchitect® 4.0.0
North Reference	True	User	Guenaler
Scale	0.999961	Report Generated	10/25/2014 at 12:59:05 PM
Convergence at slot	n/a	Database/Source file	WA_Denver/PRONGHORN_D-X-9HNB_AWB.xml

## WELLPATH LOCATION

	Local coordinates		Grid coordinates		Geographic coordinates	
	North[ft]	East[ft]	Easting[US ft]	Northing[US ft]	Latitude	Longitude
Slot Location	0.00	38.99	3355655.19	1395471.55	40°24'42.984"N	104°13'21.864"W
Facility Reference Pt			3355616.21	1395470.99	40°24'42.984"N	104°13'22.368"W
Field Reference Pt			3335925.10	1457282.25	40°34'56.460"N	104°17'26.016"W

## WELLPATH DATUM

Calculation method	Minimum curvature	RIG (RKB) to Facility Vertical Datum	4654.00ft
Horizontal Reference Pt	Slot	RIG (RKB) to Mean Sea Level	4654.00ft
Vertical Reference Pt	RIG (RKB)	RIG (RKB) to Mud Line at Slot (SLOT#03 PRONGHORN D-X-9HNB (1273'FSL & 260'FWL,SEC.9))	4654.00ft
MD Reference Pt	RIG (RKB)	Section Origin	N 0.00, E 0.00 ft
Field Vertical Reference	Mean Sea Level	Section Azimuth	91.09°



# Actual Wellpath Report

PRONGHORN D-X-9HNB AWP

Page 2 of 8



REFERENCE WELLPATH IDENTIFICATION			
Operator	BONANZA CREEK OIL COMPANY	Slot	SLOT#03 PRONGHORN D-X-9HNB (1273'FSL & 260'FWL,SEC.9)
Area	COLORADO	Well	PRONGHORN D-X-9HNB
Field	WELD COUNTY	Wellbore	PRONGHORN D-X-9HNB AWB
Facility	SEC.09-T5N-R61W		

## WELLPATH DATA (112 stations) † = interpolated/extrapolated station

MD [ft]	Inclination [°]	Azimuth [°]	TVD [ft]	Vert Sect [ft]	North [ft]	East [ft]	Latitude	Longitude	DLS [°/100ft]	Comments
0.00†	0.000	95.760	0.00	0.00	0.00	0.00	40°24'42.984"N	104°13'21.864"W	0.00	
17.00	0.000	95.760	17.00	0.00	0.00	0.00	40°24'42.984"N	104°13'21.864"W	0.00	
500.00	0.370	95.760	500.00	1.55	-0.16	1.55	40°24'42.982"N	104°13'21.844"W	0.08	Tie on Point
642.00	0.490	114.420	641.99	2.57	-0.45	2.56	40°24'42.980"N	104°13'21.831"W	0.13	
832.00	0.650	130.170	831.98	4.15	-1.48	4.12	40°24'42.969"N	104°13'21.811"W	0.12	
1022.00	0.720	132.830	1021.97	5.88	-2.99	5.82	40°24'42.954"N	104°13'21.789"W	0.04	
1212.00	0.840	131.040	1211.95	7.84	-4.72	7.75	40°24'42.937"N	104°13'21.764"W	0.06	
1307.00	0.820	146.100	1306.94	8.76	-5.74	8.65	40°24'42.927"N	104°13'21.752"W	0.23	
1403.00	1.020	275.110	1402.94	8.30	-6.23	8.19	40°24'42.922"N	104°13'21.758"W	1.73	
1498.00	2.810	259.480	1497.88	5.18	-6.58	5.05	40°24'42.919"N	104°13'21.799"W	1.95	
1592.00	4.880	264.140	1591.66	-1.05	-7.41	-1.19	40°24'42.911"N	104°13'21.879"W	2.23	
1687.00	6.790	257.290	1686.17	-10.51	-9.06	-10.69	40°24'42.894"N	104°13'22.002"W	2.14	
1779.00	7.570	264.030	1777.45	-21.81	-10.89	-22.02	40°24'42.876"N	104°13'22.149"W	1.25	
1873.00	9.310	258.590	1870.43	-35.38	-13.04	-35.63	40°24'42.855"N	104°13'22.325"W	2.03	
1968.00	10.580	256.430	1964.00	-51.32	-16.60	-51.65	40°24'42.820"N	104°13'22.532"W	1.39	
2159.00	10.340	258.350	2151.82	-85.00	-24.18	-85.48	40°24'42.745"N	104°13'22.969"W	0.22	
2255.00	9.800	259.840	2246.35	-101.42	-27.36	-101.96	40°24'42.714"N	104°13'23.182"W	0.62	
2350.00	10.030	260.220	2339.93	-117.47	-30.19	-118.07	40°24'42.686"N	104°13'23.390"W	0.25	
2445.00	10.020	257.000	2433.48	-133.61	-33.45	-134.28	40°24'42.653"N	104°13'23.600"W	0.59	
2540.00	10.130	263.120	2527.01	-149.90	-36.31	-150.62	40°24'42.625"N	104°13'23.811"W	1.13	
2636.00	9.970	267.550	2621.54	-166.56	-37.68	-167.31	40°24'42.612"N	104°13'24.027"W	0.82	
2730.00	10.320	266.760	2714.07	-183.08	-38.50	-183.84	40°24'42.604"N	104°13'24.241"W	0.40	
2825.00	9.570	264.890	2807.65	-199.41	-39.69	-200.21	40°24'42.592"N	104°13'24.452"W	0.86	
2920.00	7.110	269.480	2901.63	-213.14	-40.45	-213.95	40°24'42.584"N	104°13'24.630"W	2.68	
3016.00	5.520	268.490	2997.05	-223.69	-40.62	-224.51	40°24'42.583"N	104°13'24.766"W	1.66	
3111.00	4.830	274.320	3091.66	-232.25	-40.44	-233.07	40°24'42.584"N	104°13'24.877"W	0.91	
3206.00	4.690	270.160	3186.33	-240.13	-40.13	-240.94	40°24'42.587"N	104°13'24.979"W	0.39	
3301.00	3.520	261.330	3281.09	-246.89	-40.56	-247.70	40°24'42.583"N	104°13'25.066"W	1.40	
3395.00	2.260	274.450	3374.97	-251.58	-40.85	-252.41	40°24'42.580"N	104°13'25.127"W	1.51	
3491.00	0.670	223.020	3470.94	-253.85	-41.11	-254.68	40°24'42.578"N	104°13'25.156"W	2.00	



# Actual Wellpath Report

## PRONGHORN D-X-9HNB AWP

Page 3 of 8



REFERENCE WELLPATH IDENTIFICATION			
Operator	BONANZA CREEK OIL COMPANY	Slot	SLOT#03 PRONGHORN D-X-9HNB (1273'FSL & 260'FWL,SEC.9)
Area	COLORADO	Well	PRONGHORN D-X-9HNB
Field	WELD COUNTY	Wellbore	PRONGHORN D-X-9HNB AWB
Facility	SEC.09-T5N-R61W		

WELLPATH DATA (112 stations)										
MD [ft]	Inclination [°]	Azimuth [°]	TVD [ft]	Vert Sect [ft]	North [ft]	East [ft]	Latitude	Longitude	DLS [°/100ft]	Comments
3585.00	1.260	170.260	3564.93	-254.02	-42.53	-254.88	40°24'42.564"N	104°13'25.159"W	1.07	
3681.00	1.060	171.140	3660.91	-253.67	-44.45	-254.56	40°24'42.545"N	104°13'25.155"W	0.21	
3776.00	0.790	183.200	3755.89	-253.54	-45.97	-254.46	40°24'42.530"N	104°13'25.154"W	0.35	
3871.00	0.450	74.340	3850.89	-253.21	-46.53	-254.14	40°24'42.524"N	104°13'25.149"W	1.08	
4060.00	0.030	342.860	4039.89	-252.51	-46.28	-253.44	40°24'42.527"N	104°13'25.140"W	0.24	
4156.00	0.700	310.580	4135.89	-252.97	-45.87	-253.89	40°24'42.531"N	104°13'25.146"W	0.70	
4347.00	0.470	251.500	4326.88	-254.61	-45.36	-255.52	40°24'42.536"N	104°13'25.167"W	0.32	
4441.00	0.560	205.590	4420.87	-255.16	-45.90	-256.08	40°24'42.530"N	104°13'25.175"W	0.44	
4535.00	0.960	119.790	4514.87	-254.66	-46.70	-255.60	40°24'42.522"N	104°13'25.168"W	1.14	
4725.00	0.720	131.340	4704.85	-252.36	-48.28	-253.32	40°24'42.507"N	104°13'25.139"W	0.15	
4820.00	0.620	139.070	4799.84	-251.56	-49.07	-252.54	40°24'42.499"N	104°13'25.129"W	0.14	
5011.00	0.550	149.790	4990.83	-250.39	-50.64	-251.40	40°24'42.484"N	104°13'25.114"W	0.07	
5105.00	0.920	173.390	5084.82	-250.05	-51.78	-251.08	40°24'42.472"N	104°13'25.110"W	0.50	
5197.00	0.800	59.510	5176.82	-249.41	-52.19	-250.45	40°24'42.468"N	104°13'25.102"W	1.57	
5290.00	0.920	71.660	5269.81	-248.15	-51.62	-249.18	40°24'42.474"N	104°13'25.085"W	0.23	
5461.00	0.650	54.330	5440.79	-246.08	-50.62	-247.09	40°24'42.484"N	104°13'25.058"W	0.21	
5567.00	4.720	80.840	5546.65	-241.30	-49.58	-242.29	40°24'42.494"N	104°13'24.996"W	3.91	
5659.00	15.080	89.370	5637.16	-225.57	-48.84	-226.54	40°24'42.501"N	104°13'24.793"W	11.34	
5753.00	23.030	95.190	5725.95	-194.96	-50.37	-195.95	40°24'42.486"N	104°13'24.397"W	8.69	
5798.00	28.430	96.140	5766.47	-175.49	-52.32	-176.52	40°24'42.467"N	104°13'24.146"W	12.03	
5845.00	33.130	94.260	5806.84	-151.51	-54.47	-152.58	40°24'42.446"N	104°13'23.836"W	10.21	
5891.00	38.280	93.630	5844.18	-124.71	-56.31	-125.80	40°24'42.428"N	104°13'23.490"W	11.22	
5938.00	43.140	94.210	5879.80	-94.10	-58.41	-95.23	40°24'42.407"N	104°13'23.095"W	10.37	
6032.00	50.620	94.040	5944.01	-25.63	-63.34	-26.84	40°24'42.358"N	104°13'22.211"W	7.96	
6079.00	54.140	92.210	5972.69	11.57	-65.35	10.32	40°24'42.338"N	104°13'21.731"W	8.10	
6126.00	58.530	90.630	5998.74	50.67	-66.31	49.42	40°24'42.329"N	104°13'21.225"W	9.75	
6173.00	63.130	88.290	6021.65	91.68	-65.90	90.44	40°24'42.333"N	104°13'20.695"W	10.71	
6219.00	69.350	86.310	6040.17	133.66	-63.90	132.47	40°24'42.353"N	104°13'20.151"W	14.08	
6266.00	70.350	85.540	6056.36	177.61	-60.76	176.48	40°24'42.384"N	104°13'19.583"W	2.63	
6312.00	70.700	86.550	6071.70	220.81	-57.77	219.74	40°24'42.413"N	104°13'19.023"W	2.21	



# Actual Wellpath Report

PRONGHORN D-X-9HNB AWP

Page 4 of 8



REFERENCE WELLPATH IDENTIFICATION			
Operator	BONANZA CREEK OIL COMPANY	Slot	SLOT#03 PRONGHORN D-X-9HNB (1273'FSL & 260'FWL,SEC.9)
Area	COLORADO	Well	PRONGHORN D-X-9HNB
Field	WELD COUNTY	Wellbore	PRONGHORN D-X-9HNB AWB
Facility	SEC.09-T5N-R61W		

WELLPATH DATA (112 stations)										
MD [ft]	Inclination [°]	Azimuth [°]	TVD [ft]	Vert Sect [ft]	North [ft]	East [ft]	Latitude	Longitude	DLS [°/100ft]	Comments
6359.00	75.220	89.692	6085.47	265.66	-56.32	264.64	40°24'42.427"N	104°13'18.443"W	11.55	
6405.00	80.530	89.390	6095.13	310.61	-55.95	309.60	40°24'42.431"N	104°13'17.862"W	11.56	
6436.00	80.640	89.380	6100.20	341.17	-55.63	340.18	40°24'42.434"N	104°13'17.466"W	0.36	
6468.00	82.560	88.880	6104.88	372.81	-55.15	371.83	40°24'42.439"N	104°13'17.057"W	6.20	
6500.00	85.830	88.180	6108.11	404.61	-54.33	403.65	40°24'42.447"N	104°13'16.646"W	10.45	
6506.00	86.710	88.340	6108.50	410.59	-54.15	409.63	40°24'42.449"N	104°13'16.568"W	14.91	
6578.00	90.060	86.420	6110.53	482.40	-50.86	481.52	40°24'42.481"N	104°13'15.639"W	5.36	
6651.00	90.590	89.890	6110.12	555.29	-48.51	554.46	40°24'42.505"N	104°13'14.696"W	4.81	
6745.00	89.750	90.470	6109.84	649.27	-48.80	648.46	40°24'42.502"N	104°13'13.481"W	1.09	
6838.00	89.970	91.160	6110.07	742.27	-50.12	741.45	40°24'42.489"N	104°13'12.279"W	0.78	
6931.00	89.780	91.770	6110.27	835.27	-52.50	834.42	40°24'42.465"N	104°13'11.077"W	0.69	
7024.00	90.400	90.420	6110.12	928.27	-54.28	927.40	40°24'42.447"N	104°13'09.875"W	1.60	
7118.00	88.980	90.150	6110.63	1022.25	-54.75	1021.40	40°24'42.443"N	104°13'08.660"W	1.54	
7213.00	89.200	90.500	6112.14	1117.23	-55.29	1116.38	40°24'42.437"N	104°13'07.432"W	0.44	
7308.00	89.100	90.980	6113.55	1212.22	-56.51	1211.36	40°24'42.425"N	104°13'06.204"W	0.52	
7403.00	89.050	91.330	6115.08	1307.21	-58.43	1306.33	40°24'42.406"N	104°13'04.976"W	0.37	
7498.00	90.430	91.670	6115.51	1402.20	-60.91	1401.30	40°24'42.382"N	104°13'03.749"W	1.50	
7593.00	92.070	92.360	6113.44	1497.16	-64.25	1496.21	40°24'42.349"N	104°13'02.522"W	1.87	
7688.00	91.980	90.900	6110.08	1592.10	-66.95	1591.11	40°24'42.322"N	104°13'01.295"W	1.54	
7783.00	91.050	90.860	6107.57	1687.06	-68.41	1686.07	40°24'42.307"N	104°13'00.067"W	0.98	
7878.00	89.230	89.560	6107.34	1782.05	-68.76	1781.06	40°24'42.304"N	104°12'58.839"W	2.35	
7974.00	88.920	89.420	6108.89	1878.00	-67.91	1877.04	40°24'42.312"N	104°12'57.598"W	0.35	
8068.00	89.020	90.040	6110.58	1971.95	-67.46	1971.03	40°24'42.317"N	104°12'56.383"W	0.67	
8163.00	89.970	90.090	6111.42	2066.93	-67.57	2066.02	40°24'42.315"N	104°12'55.155"W	1.00	
8258.00	90.220	90.180	6111.26	2161.92	-67.79	2161.02	40°24'42.313"N	104°12'53.927"W	0.28	
8353.00	90.650	90.670	6110.54	2256.91	-68.50	2256.01	40°24'42.306"N	104°12'52.699"W	0.69	
8447.00	90.920	91.240	6109.25	2350.90	-70.07	2349.99	40°24'42.291"N	104°12'51.484"W	0.67	
8541.00	90.270	89.390	6108.28	2444.88	-70.58	2443.98	40°24'42.285"N	104°12'50.269"W	2.09	
8635.00	90.280	88.170	6107.82	2538.80	-68.58	2537.96	40°24'42.305"N	104°12'49.054"W	1.30	
8730.00	89.260	88.700	6108.21	2633.70	-65.99	2632.92	40°24'42.331"N	104°12'47.827"W	1.21	



# Actual Wellpath Report

PRONGHORN D-X-9HNB AWP

Page 5 of 8



## REFERENCE WELLPATH IDENTIFICATION

Operator	BONANZA CREEK OIL COMPANY	Slot	SLOT#03 PRONGHORN D-X-9HNB (1273'FSL & 260'FWL,SEC.9)
Area	COLORADO	Well	PRONGHORN D-X-9HNB
Field	WELD COUNTY	Wellbore	PRONGHORN D-X-9HNB AWB
Facility	SEC.09-T5N-R61W		

## WELLPATH DATA (112 stations)

MD [ft]	Inclination [°]	Azimuth [°]	TVD [ft]	Vert Sect [ft]	North [ft]	East [ft]	Latitude	Longitude	DLS [°/100ft]	Comments
8826.00	87.840	88.930	6110.63	2729.59	-64.00	2728.86	40°24'42.350"N	104°12'46.586"W	1.50	
8920.00	88.280	90.490	6113.82	2823.50	-63.53	2822.81	40°24'42.355"N	104°12'45.372"W	1.72	
9016.00	90.890	91.920	6114.51	2919.49	-65.54	2918.77	40°24'42.335"N	104°12'44.131"W	3.10	
9111.00	92.000	91.640	6112.12	3014.45	-68.49	3013.69	40°24'42.305"N	104°12'42.904"W	1.20	
9205.00	91.240	89.600	6109.46	3108.41	-69.51	3107.65	40°24'42.295"N	104°12'41.690"W	2.32	
9300.00	90.650	89.200	6107.89	3203.35	-68.52	3202.63	40°24'42.305"N	104°12'40.462"W	0.75	
9395.00	89.050	89.740	6108.14	3298.31	-67.64	3297.62	40°24'42.313"N	104°12'39.234"W	1.78	
9490.00	89.080	89.970	6109.69	3393.27	-67.40	3392.61	40°24'42.316"N	104°12'38.006"W	0.24	
9584.00	89.720	89.950	6110.68	3487.25	-67.33	3486.60	40°24'42.316"N	104°12'36.791"W	0.68	
9679.00	89.570	91.820	6111.26	3582.24	-68.80	3581.58	40°24'42.302"N	104°12'35.563"W	1.97	
9774.00	90.220	92.530	6111.44	3677.23	-72.40	3676.51	40°24'42.266"N	104°12'34.335"W	1.01	
9869.00	90.940	92.830	6110.48	3772.18	-76.85	3771.40	40°24'42.222"N	104°12'33.109"W	0.82	
9963.00	91.300	91.580	6108.64	3866.15	-80.46	3865.31	40°24'42.186"N	104°12'31.895"W	1.38	
10058.00	90.960	90.090	6106.77	3961.12	-81.85	3960.28	40°24'42.172"N	104°12'30.667"W	1.61	
10153.00	90.340	90.560	6105.69	4056.11	-82.38	4055.27	40°24'42.167"N	104°12'29.439"W	0.82	
10248.00	88.730	90.520	6106.46	4151.10	-83.28	4150.26	40°24'42.158"N	104°12'28.211"W	1.70	
10343.00	88.240	90.460	6108.97	4246.06	-84.09	4245.23	40°24'42.149"N	104°12'26.983"W	0.52	
10438.00	90.340	91.560	6110.15	4341.04	-85.77	4340.20	40°24'42.133"N	104°12'25.756"W	2.50	
10532.00	91.200	92.070	6108.88	4435.03	-88.74	4434.14	40°24'42.103"N	104°12'24.541"W	1.06	
10627.00	91.330	92.330	6106.79	4529.99	-92.39	4529.05	40°24'42.067"N	104°12'23.314"W	0.31	
10664.00	91.330	92.410	6105.93	4566.97	-93.92	4566.01	40°24'42.052"N	104°12'22.836"W	0.22	Last BHI Survey
10738.00	91.330	92.410	6104.21	4640.93	-97.03	4639.92	40°24'42.021"N	104°12'21.881"W	0.00	Projection to Bit



# Actual Wellpath Report

PRONGHORN D-X-9HNB AWP

Page 6 of 8



## REFERENCE WELLPATH IDENTIFICATION

Operator	BONANZA CREEK OIL COMPANY	Slot	SLOT#03 PRONGHORN D-X-9HNB (1273'FSL & 260'FWL,SEC.9)
Area	COLORADO	Well	PRONGHORN D-X-9HNB
Field	WELD COUNTY	Wellbore	PRONGHORN D-X-9HNB AWB
Facility	SEC.09-T5N-R61W		

## HOLE & CASING SECTIONS - Ref Wellbore: PRONGHORN D-X-9HNB AWB Ref Wellpath: PRONGHORN D-X-9HNB AWP

String/Diameter	Start MD [ft]	End MD [ft]	Interval [ft]	Start TVD [ft]	End TVD [ft]	Start N/S [ft]	Start E/W [ft]	End N/S [ft]	End E/W [ft]
13.5in Open Hole	17.00	465.00	448.00	17.00	465.00	0.00	0.00	-0.13	1.33
9.625in Casing Surface	17.00	465.00	448.00	17.00	465.00	0.00	0.00	-0.13	1.33
8.75in Open Hole	465.00	6466.00	6001.00	465.00	6104.62	-0.13	1.33	-55.18	369.84
7in Casing Intermediate	17.00	6757.00	6740.00	17.00	6109.89	0.00	0.00	-48.91	660.46
6.125in Open Hole	6757.00	10738.00	3981.00	6109.89	6104.21	-48.91	660.46	-97.03	4639.92

## TARGETS

Name	MD [ft]	TVD [ft]	North [ft]	East [ft]	Grid East [US ft]	Grid North [US ft]	Latitude	Longitude	Shape
PRONGHORN C-W-9HNB SECTION 9		0.00	0.00	-38.99	3355616.21	1395470.99	40°24'42.984"N	104°13'22.368"W	polygon
PRONGHORN D-X-9HNB BHL REV-2 from plan (1341'FSL & 470'FEL,SEC.09)		6102.00	11.37	4653.27	3360307.62	1395549.94	40°24'43.092"N	104°12'21.708"W	point
PRONGHORN D-X-9HNB BHL REV-3 (1241'FSL & 470'FEL,SEC.09)		6102.00	-88.63	4653.27	3360309.06	1395449.95	40°24'42.104"N	104°12'21.708"W	point
PRONGHORN D-X-9HNB Target		6102.00	51.01	272.90	3355927.31	1395526.48	40°24'43.488"N	104°13'18.336"W	point
PRONGHORN D-X-9HNB Target 2		6102.00	-48.99	272.90	3355928.76	1395426.50	40°24'42.500"N	104°13'18.336"W	point
PRONGHORN C-W-9HNB HARDLINES (460' SETBACK)		6118.00	0.00	-38.99	3355616.21	1395470.99	40°24'42.984"N	104°13'22.368"W	polygon
PRONGHORN D-X-9HNB BHL from plan (1341'FSL & 470'FEL,SEC.09)		6118.00	11.37	4653.28	3360307.63	1395549.94	40°24'43.092"N	104°12'21.708"W	point





**Actual Wellpath Report**  
**PRONGHORN D-X-9HNB AWP**  
Page 7 of 8



REFERENCE WELLPATH IDENTIFICATION			
Operator	BONANZA CREEK OIL COMPANY	Slot	SLOT#03 PRONGHORN D-X-9HNB (1273'FSL & 260'FWL,SEC.9)
Area	COLORADO	Well	PRONGHORN D-X-9HNB
Field	WELD COUNTY	Wellbore	PRONGHORN D-X-9HNB AWB
Facility	SEC.09-T5N-R61W		

WELLPATH COMPOSITION - Ref Wellbore: PRONGHORN D-X-9HNB AWB    Ref Wellpath: PRONGHORN D-X-9HNB AWP				
Start MD [ft]	End MD [ft]	Positional Uncertainty Model	Log Name/Comment	Wellbore
17.00	6506.00	NaviTrak (Standard)	BHI/Navitrak MWD 8.75"Hole <17'-6506'>	PRONGHORN D-X-9HNB AWB
6506.00	10664.00	NaviTrak (Standard)	BHI/Navitrak MWD 6.125" Hole <6578"-10664">	PRONGHORN D-X-9HNB AWB
10664.00	10738.00	Blind Drilling (std)	Projection to bit	PRONGHORN D-X-9HNB AWB





**Actual Wellpath Report**  
**PRONGHORN D-X-9HNB AWP**  
Page 8 of 8



REFERENCE WELLPATH IDENTIFICATION			
Operator	BONANZA CREEK OIL COMPANY	Slot	SLOT#03 PRONGHORN D-X-9HNB (1273'FSL & 260'FWL,SEC.9)
Area	COLORADO	Well	PRONGHORN D-X-9HNB
Field	WELD COUNTY	Wellbore	PRONGHORN D-X-9HNB AWB
Facility	SEC.09-T5N-R61W		

WELLPATH COMMENTS				
MD [ft]	Inclination [°]	Azimuth [°]	TVD [ft]	Comment
500.00	0.370	95.760	500.00	Tie on Point
10664.00	91.330	92.410	6105.93	Last BHI Survey
10738.00	91.330	92.410	6104.21	Projection to Bit