

T2N, R96W, 6th. P.M.

KOCH EXPLORATION COMPANY

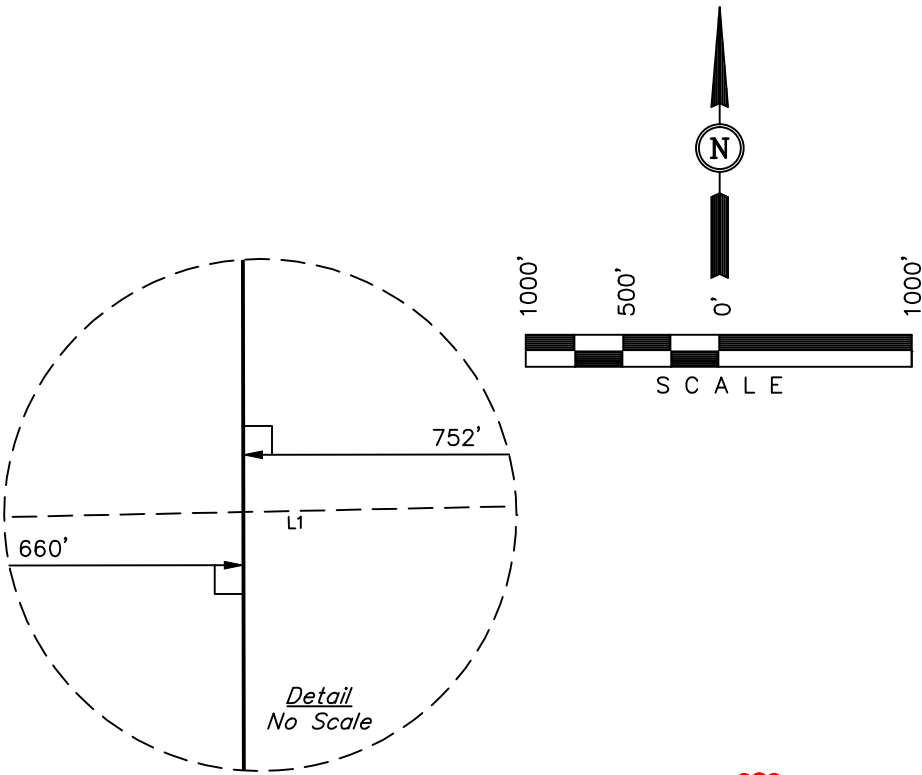
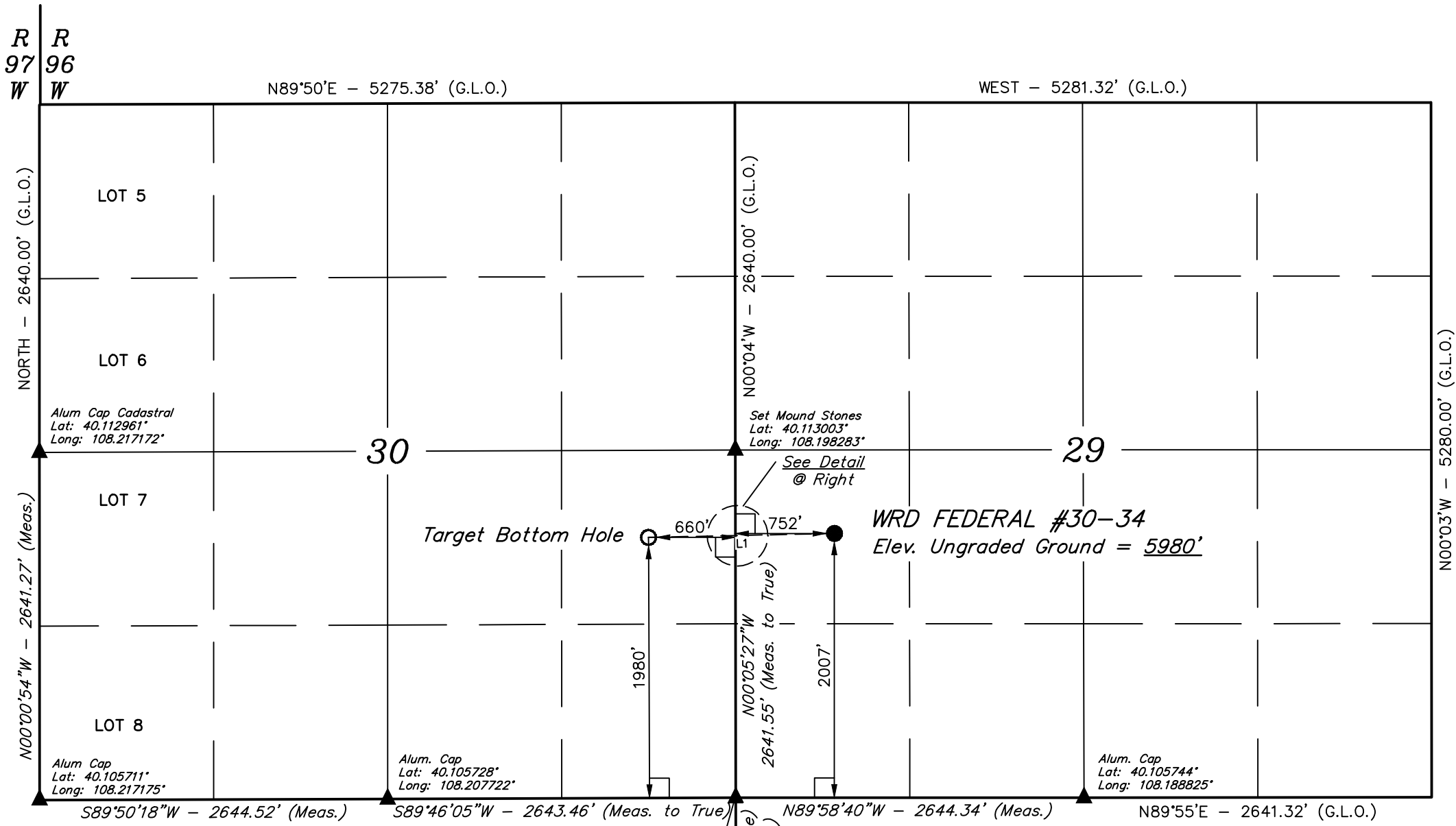
Well location, WRD FEDERAL #30-34, located as shown in the NW 1/4 SW 1/4 of Section 29, T2N, R96W, 6th. P.M., Rio Blanco County, Colorado.

BASIS OF ELEVATION

SPOT ELEVATION AT A BRIDGE LOCATED IN THE SE 1/4 OF SECTION 34, T2N, R97W, 6th P.M. TAKEN FROM THE BARCUS CREEK SE, QUADRANGLE, COLORADO, RIO BLANCO COUNTY, 7.5 MINUTE QUAD. (TOPOGRAPHIC MAP) PUBLISHED BY THE UNITED STATES DEPARTMENT OF THE INTERIOR, GEOLOGICAL SURVEY. SAID ELEVATION IS MARKED AS BEING 5700 FEET.

BASIS OF BEARINGS

BASIS OF BEARINGS IS A G.P.S. OBSERVATION.



CERTIFICATE

THIS IS TO CERTIFY THAT THE ABOVE PLAT WAS PREPARED FROM FIELD NOTES OF ACTUAL SURVEYS MADE BY ME OR UNDER MY SUPERVISION AND THAT THE SAME ARE TRUE AND CORRECT TO THE BEST OF MY KNOWLEDGE AND BELIEF.

REGISTERED LAND SURVEYOR
REGISTRATION NO. 17492
STATE OF COLORADO

LINE TABLE		
LINE	DIRECTION	LENGTH
L1	S88°47'29"W	1412.04'

REVISED: 04-21-14 T.B.
REVISED: 06-12-13 J.S.

UINTAH ENGINEERING & LAND SURVEYING			
85 SOUTH 200 EAST - VERNAL, UTAH 84078			
(435) 789-1017			
SCALE 1" = 1000'	DATE SURVEYED: 03-08-13	DATE DRAWN: 03-11-13	REFERENCES G.L.O. PLAT
PARTY B.H. A.H. J.G.G.	FILE KOCH EXPLORATION COMPANY		
WEATHER COLD			

- LEGEND:
- └─┘ = 90° SYMBOL
 - = PROPOSED WELL HEAD.
 - ▲ = SECTION CORNERS LOCATED.

S.E. Corner of Sec. 31
Alum. Cap
Lat: 40.098500°
Long: 108.198269°

NAD 83 (TARGET BOTTOM HOLE)		NAD 83 (SURFACE LOCATION)	
LATITUDE = 40°06'40.25" (40.111181)	LONGITUDE = 108°12'02.31" (108.200642)	LATITUDE = 40°06'40.54" (40.111261)	LONGITUDE = 108°11'44.14" (108.195594)
NAD 27 (TARGET BOTTOM HOLE)		NAD 27 (SURFACE LOCATION)	
LATITUDE = 40°06'40.36" (40.111211)	LONGITUDE = 108°12'00.00" (108.200000)	LATITUDE = 40°06'40.64" (40.111289)	LONGITUDE = 108°11'41.84" (108.194956)

PDOP = 1.4