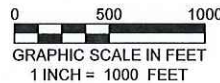
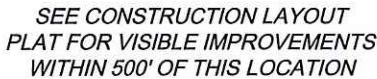


T. 7 S.



I, MICHAEL J. LANGHORNE, A REGISTERED LAND SURVEYOR IN THE STATE OF COLORADO DO HEREBY CERTIFY THAT THE SURVEY SHOWN HEREON WAS PREPARED UNDER MY DIRECT SUPERVISION AND HAS BEEN STAKED ON THE GROUND AS SHOWN ON THE PLAT AND CHECKING THAT THIS MAP IS A TRUE REPRESENTATION THEREOF.

REFERENCES

- 136 East Third Street
Rifle, Colorado
81650 Ph. (970)
625-2720 Fax (970)
625-2773



BOOKCLIFF
Survey Services, Inc.

SURVEY DATE: 7/29/14
MAP DATE: 9/23/14
SCALE: 1" = 1000'
PLAT: 1 of 1
PROJECT: Valley

- 1) ELEVATIONS BASED ON N.A.V.D. 1988 PUBLISHED COORDINATES.
- 2) LATITUDES AND LONGITUDES ARE BASE ON NAD 83,
PUBLISHED COORDINATES
- 3) STATE PLANE COORDINATES ARE BASED ON COLORADO
CENTRAL ZONE, U.S. SURVEY FEET.
- 4) ELEVATION MASK SET TO 15°
- 5) GPS OPERATOR J. KIRKPATRICK, OBSERVED A PDOP OF 2.2 ON
SURVEY POINT NUMBER 435.
- 6) SURFACE AND BOTTOM HOLE LOCATIONS ARE MEASURED 90°
FROM SECTION LINES.

WPX ENERGY WPX Energy Rocky Mountain, LLC

SE1/4 NW1/4, SECTION 10
T. 7 S., R. 96 W. of the 6th. P.M.
GARFIELD COUNTY, COLORADO

- LEGEND -

FIELD LOCATED SECTION
MONUMENTS AS DESCRIBEDFIELD SURVEYED
WELL LOCATION

CALCULATED BOTTOM HOLE LOCATION



CALCULATED SECTION
CORNER LOCATION

