

# Red Hawk Petroleum, LLC.

Well Name: **White 29-1H**

Surface Location: White Pad Sec. 29-T8N-R61W

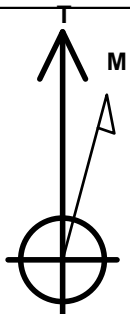
North American Datum 1983 , US State Plane 1983 , Colorado Northern Zone

Ground Elevation: 4986.0

+N/-S	+E/-W	Northing	Easting	Latitude	Longitude	Slot
0.0	0.0	1475544.56	3351041.35	40.631894	-104.235206	
RKB - 20' WELL @ 5006.0ft (RKB - 20')						

## WELLBORE TARGET DETAILS

Name	TVD	+N/-S	+E/-W	Shape
SHL 2458'FSL & 1305'FWL, Sec.29	1.0	0.0	0.0	Point
BHL 300'FSL & 300'FWL, Sec.32	6565.0	-7483.2	-1078.9	Point
Landing Pt. 2365'FSL & 320'FWL, Sec.29	6565.0	-107.1	-984.8	Point



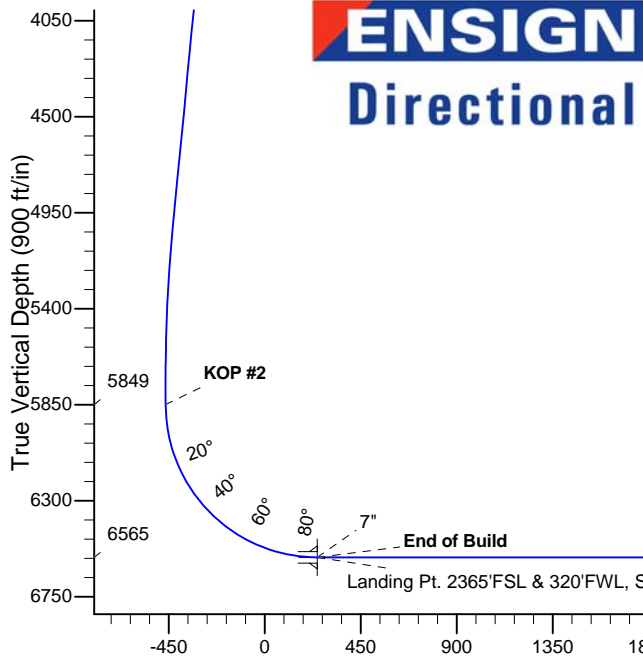
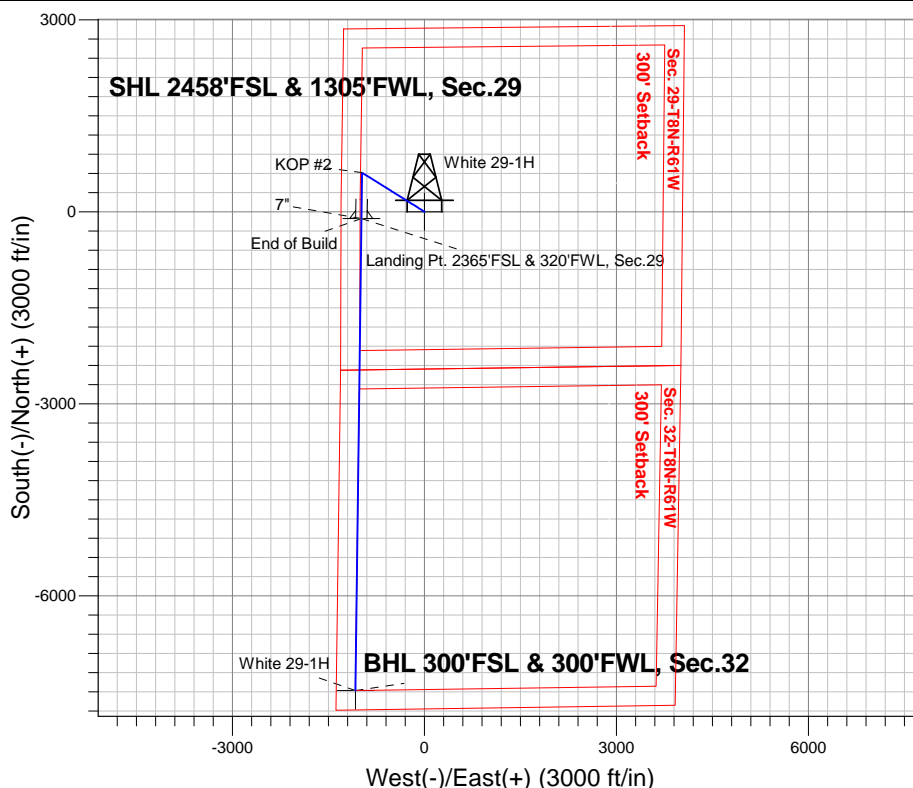
Azimuths to True North  
Magnetic North: 8.21°

Magnetic Field  
Strength: 53002.8nT  
Dip Angle: 67.22°  
Date: 4/28/2014  
Model: IGRF2010

White Pad Sec. 29-T8N-R61W  
White 29-1H  
Plan #1 (4-28-14)  
14:41, May 01 2014

## ANNOTATIONS

TVD	MD	Annotation
200.0	200.0	KOP #1
5848.8	5977.9	KOP #2
6565.0	7103.7	End of Build



## SECTION DETAILS

Sec	MD	Inc	Azi	TVD	+N/-S	+E/-W	DLeg	TFace	VSec	Target
1	0.0	0.00	0.00	0.0	0.0	0.0	0.00	0.00	0.0	
2	200.0	0.00	0.00	200.0	0.0	0.0	0.00	0.00	0.0	
3	870.4	13.41	302.01	864.3	41.4	-66.2	2.00	302.01	-31.5	
4	5158.7	13.41	302.01	5035.7	568.5	-909.4	0.00	0.00	-432.8	
5	5829.1	0.00	0.00	5700.0	609.9	-975.6	2.00	180.00	-464.4	
6	5977.9	0.00	0.00	5848.8	609.9	-975.6	0.00	0.00	-464.4	
7	7102.9	90.00	180.73	6565.0	-106.3	-984.8	8.00	180.73	245.8	
8	7103.7	90.00	180.73	6565.0	-107.1	-984.8	0.00	0.00	246.6	Landing Pt. 2365'FSL & 320'FWL, Sec.29
9	14480.4	90.00	180.73	6565.0	-7483.2	-1079.3	0.00	0.00	7560.6	BHL 300'FSL & 300'FWL, Sec.32

**BHL 300'FSL & 300'FWL, Sec.32**

Vertical Section at 188.21° (900 ft/in)



## **Red Hawk Petroleum, LLC.**

**Sec.29-T8N-R61W**

**White Pad Sec. 29-T8N-R61W**

**White 29-1H**

**Wellbore #1**

**Plan: Plan #1 (4-28-14)**

## **Standard Planning Report**

**01 May, 2014**

<b>Database:</b>	landmark	<b>Local Co-ordinate Reference:</b>	Well White 29-1H
<b>Company:</b>	Red Hawk Petroleum, LLC.	<b>TVD Reference:</b>	WELL @ 5006.0ft (RKB - 20')
<b>Project:</b>	Sec.29-T8N-R61W	<b>MD Reference:</b>	WELL @ 5006.0ft (RKB - 20')
<b>Site:</b>	White Pad Sec. 29-T8N-R61W	<b>North Reference:</b>	True
<b>Well:</b>	White 29-1H	<b>Survey Calculation Method:</b>	Minimum Curvature
<b>Wellbore:</b>	Wellbore #1		
<b>Design:</b>	Plan #1 (4-28-14)		

<b>Project</b>	Sec.29-T8N-R61W, Weld County, CO		
<b>Map System:</b>	US State Plane 1983	<b>System Datum:</b>	Mean Sea Level
<b>Geo Datum:</b>	North American Datum 1983		Using Well Reference Point
<b>Map Zone:</b>	Colorado Northern Zone		Using geodetic scale factor

Site						White Pad Sec. 29-T8N-R61W											
Site Position:						Northing:			1,475,529.21 ft			Latitude:			40.631894		
From:			Lat/Long			Easting:			3,349,962.87 ft			Longitude:			-104.239092		
Position Uncertainty:			0.0 ft			Slot Radius:			"			Grid Convergence:			0.81 °		

Well	White 29-1H					
Well Position	+N-S	0.0 ft	Northing:	1,475,544.56 ft	Latitude:	40.631894
	+E-W	1,078.6 ft	Easting:	3,351,041.35 ft	Longitude:	-104.235206
Position Uncertainty		0.0 ft	Wellhead Elevation:	ft	Ground Level:	4,986.0 ft

<b>Wellbore</b>	Wellbore #1				
<b>Magnetics</b>	<b>Model Name</b>	<b>Sample Date</b>	<b>Declination (°)</b>	<b>Dip Angle (°)</b>	<b>Field Strength (nT)</b>
	IGRF2010	4/28/2014	8.21	67.22	53,003

<b>Design</b>	Plan #1 (4-28-14)			
<b>Audit Notes:</b>				
<b>Version:</b>	<b>Phase:</b>	PROTOTYPE	<b>Tie On Depth:</b>	0.0
<b>Vertical Section:</b>	<b>Depth From (TVD) (ft)</b>	<b>+N/-S (ft)</b>	<b>+E/-W (ft)</b>	<b>Direction (°)</b>
	0.0	0.0	0.0	188.21

<b>Plan Sections</b>										
Measured Depth (ft)	Inclination (°)	Azimuth (°)	Vertical Depth (ft)	+N/-S (ft)	+E/-W (ft)	Dogleg Rate (°/100ft)	Build Rate (°/100ft)	Turn Rate (°/100ft)	TFO (°)	Target
0.0	0.00	0.00	0.0	0.0	0.0	0.00	0.00	0.00	0.00	
200.0	0.00	0.00	200.0	0.0	0.0	0.00	0.00	0.00	0.00	
870.4	13.41	302.01	864.3	41.4	-66.2	2.00	2.00	0.00	302.01	
5,158.7	13.41	302.01	5,035.7	568.5	-909.4	0.00	0.00	0.00	0.00	
5,829.1	0.00	0.00	5,700.0	609.9	-975.6	2.00	-2.00	0.00	180.00	
5,977.9	0.00	0.00	5,848.8	609.9	-975.6	0.00	0.00	0.00	0.00	
7,102.9	90.00	180.73	6,565.0	-106.3	-984.8	8.00	8.00	0.00	180.73	
7,103.7	90.00	180.73	6,565.0	-107.1	-984.8	0.00	0.00	0.00	0.00	Landing Pt. 2365'F
14,480.4	90.00	180.73	6,565.0	-7,483.2	-1,079.3	0.00	0.00	0.00	0.00	BHL 300'FSL & 30C

<b>Database:</b>	landmark	<b>Local Co-ordinate Reference:</b>	Well White 29-1H
<b>Company:</b>	Red Hawk Petroleum, LLC.	<b>TVD Reference:</b>	WELL @ 5006.0ft (RKB - 20')
<b>Project:</b>	Sec.29-T8N-R61W	<b>MD Reference:</b>	WELL @ 5006.0ft (RKB - 20')
<b>Site:</b>	White Pad Sec. 29-T8N-R61W	<b>North Reference:</b>	True
<b>Well:</b>	White 29-1H	<b>Survey Calculation Method:</b>	Minimum Curvature
<b>Wellbore:</b>	Wellbore #1		
<b>Design:</b>	Plan #1 (4-28-14)		

Planned Survey									
Measured Depth (ft)	Inclination (°)	Azimuth (°)	Vertical Depth (ft)	+N/-S (ft)	+E/-W (ft)	Vertical Section (ft)	Dogleg Rate (°/100ft)	Build Rate (°/100ft)	Turn Rate (°/100ft)
0.0	0.00	0.00	0.0	0.0	0.0	0.0	0.00	0.00	0.00
1.0	0.00	0.00	1.0	0.0	0.0	0.0	0.00	0.00	0.00
<b>SHL 2458'FSL &amp; 1305'FWL, Sec.29</b>									
100.0	0.00	0.00	100.0	0.0	0.0	0.0	0.00	0.00	0.00
200.0	0.00	0.00	200.0	0.0	0.0	0.0	0.00	0.00	0.00
<b>KOP #1</b>									
300.0	2.00	302.01	300.0	0.9	-1.5	-0.7	2.00	2.00	0.00
400.0	4.00	302.01	399.8	3.7	-5.9	-2.8	2.00	2.00	0.00
500.0	6.00	302.01	499.5	8.3	-13.3	-6.3	2.00	2.00	0.00
600.0	8.00	302.01	598.7	14.8	-23.6	-11.3	2.00	2.00	0.00
700.0	10.00	302.01	697.5	23.1	-36.9	-17.6	2.00	2.00	0.00
800.0	12.00	302.01	795.6	33.2	-53.1	-25.3	2.00	2.00	0.00
870.4	13.41	302.01	864.3	41.4	-66.2	-31.5	2.00	2.00	0.00
900.0	13.41	302.01	893.1	45.0	-72.0	-34.3	0.00	0.00	0.00
1,000.0	13.41	302.01	990.4	57.3	-91.7	-43.6	0.00	0.00	0.00
1,100.0	13.41	302.01	1,087.6	69.6	-111.4	-53.0	0.00	0.00	0.00
1,200.0	13.41	302.01	1,184.9	81.9	-131.0	-62.4	0.00	0.00	0.00
1,300.0	13.41	302.01	1,282.2	94.2	-150.7	-71.7	0.00	0.00	0.00
1,400.0	13.41	302.01	1,379.5	106.5	-170.3	-81.1	0.00	0.00	0.00
1,500.0	13.41	302.01	1,476.7	118.8	-190.0	-90.4	0.00	0.00	0.00
1,600.0	13.41	302.01	1,574.0	131.1	-209.7	-99.8	0.00	0.00	0.00
1,700.0	13.41	302.01	1,671.3	143.4	-229.3	-109.2	0.00	0.00	0.00
1,800.0	13.41	302.01	1,768.6	155.7	-249.0	-118.5	0.00	0.00	0.00
1,900.0	13.41	302.01	1,865.8	167.9	-268.7	-127.9	0.00	0.00	0.00
2,000.0	13.41	302.01	1,963.1	180.2	-288.3	-137.2	0.00	0.00	0.00
2,100.0	13.41	302.01	2,060.4	192.5	-308.0	-146.6	0.00	0.00	0.00
2,200.0	13.41	302.01	2,157.7	204.8	-327.6	-155.9	0.00	0.00	0.00
2,300.0	13.41	302.01	2,254.9	217.1	-347.3	-165.3	0.00	0.00	0.00
2,400.0	13.41	302.01	2,352.2	229.4	-367.0	-174.7	0.00	0.00	0.00
2,500.0	13.41	302.01	2,449.5	241.7	-386.6	-184.0	0.00	0.00	0.00
2,600.0	13.41	302.01	2,546.8	254.0	-406.3	-193.4	0.00	0.00	0.00
2,700.0	13.41	302.01	2,644.0	266.3	-426.0	-202.7	0.00	0.00	0.00
2,800.0	13.41	302.01	2,741.3	278.6	-445.6	-212.1	0.00	0.00	0.00
2,900.0	13.41	302.01	2,838.6	290.9	-465.3	-221.5	0.00	0.00	0.00
3,000.0	13.41	302.01	2,935.9	303.2	-484.9	-230.8	0.00	0.00	0.00
3,100.0	13.41	302.01	3,033.1	315.4	-504.6	-240.2	0.00	0.00	0.00
3,200.0	13.41	302.01	3,130.4	327.7	-524.3	-249.5	0.00	0.00	0.00
3,300.0	13.41	302.01	3,227.7	340.0	-543.9	-258.9	0.00	0.00	0.00
3,400.0	13.41	302.01	3,324.9	352.3	-563.6	-268.3	0.00	0.00	0.00
3,500.0	13.41	302.01	3,422.2	364.6	-583.3	-277.6	0.00	0.00	0.00
3,600.0	13.41	302.01	3,519.5	376.9	-602.9	-287.0	0.00	0.00	0.00
3,700.0	13.41	302.01	3,616.8	389.2	-622.6	-296.3	0.00	0.00	0.00
3,800.0	13.41	302.01	3,714.0	401.5	-642.2	-305.7	0.00	0.00	0.00
3,900.0	13.41	302.01	3,811.3	413.8	-661.9	-315.0	0.00	0.00	0.00
4,000.0	13.41	302.01	3,908.6	426.1	-681.6	-324.4	0.00	0.00	0.00
4,100.0	13.41	302.01	4,005.9	438.4	-701.2	-333.8	0.00	0.00	0.00
4,200.0	13.41	302.01	4,103.1	450.7	-720.9	-343.1	0.00	0.00	0.00
4,300.0	13.41	302.01	4,200.4	462.9	-740.6	-352.5	0.00	0.00	0.00
4,400.0	13.41	302.01	4,297.7	475.2	-760.2	-361.8	0.00	0.00	0.00
4,500.0	13.41	302.01	4,395.0	487.5	-779.9	-371.2	0.00	0.00	0.00
4,600.0	13.41	302.01	4,492.2	499.8	-799.5	-380.6	0.00	0.00	0.00
4,700.0	13.41	302.01	4,589.5	512.1	-819.2	-389.9	0.00	0.00	0.00
4,800.0	13.41	302.01	4,686.8	524.4	-838.9	-399.3	0.00	0.00	0.00
4,900.0	13.41	302.01	4,784.1	536.7	-858.5	-408.6	0.00	0.00	0.00

<b>Database:</b>	landmark	<b>Local Co-ordinate Reference:</b>	Well White 29-1H
<b>Company:</b>	Red Hawk Petroleum, LLC.	<b>TVD Reference:</b>	WELL @ 5006.0ft (RKB - 20')
<b>Project:</b>	Sec.29-T8N-R61W	<b>MD Reference:</b>	WELL @ 5006.0ft (RKB - 20')
<b>Site:</b>	White Pad Sec. 29-T8N-R61W	<b>North Reference:</b>	True
<b>Well:</b>	White 29-1H	<b>Survey Calculation Method:</b>	Minimum Curvature
<b>Wellbore:</b>	Wellbore #1		
<b>Design:</b>	Plan #1 (4-28-14)		

Planned Survey									
Measured Depth (ft)	Inclination (°)	Azimuth (°)	Vertical Depth (ft)	+N/-S (ft)	+E/-W (ft)	Vertical Section (ft)	Dogleg Rate (°/100ft)	Build Rate (°/100ft)	Turn Rate (°/100ft)
5,000.0	13.41	302.01	4,881.3	549.0	-878.2	-418.0	0.00	0.00	0.00
5,100.0	13.41	302.01	4,978.6	561.3	-897.9	-427.4	0.00	0.00	0.00
5,158.7	13.41	302.01	5,035.7	568.5	-909.4	-432.8	0.00	0.00	0.00
5,200.0	12.58	302.01	5,076.0	573.4	-917.3	-436.6	2.00	-2.00	0.00
5,300.0	10.58	302.01	5,173.9	584.1	-934.3	-444.7	2.00	-2.00	0.00
5,400.0	8.58	302.01	5,272.5	592.9	-948.4	-451.4	2.00	-2.00	0.00
5,500.0	6.58	302.01	5,371.6	599.9	-959.6	-456.7	2.00	-2.00	0.00
5,600.0	4.58	302.01	5,471.2	605.0	-967.9	-460.7	2.00	-2.00	0.00
5,700.0	2.58	302.01	5,571.0	608.3	-973.1	-463.2	2.00	-2.00	0.00
5,800.0	0.58	302.01	5,670.9	609.8	-975.5	-464.3	2.00	-2.00	0.00
5,829.1	0.00	0.00	5,700.0	609.9	-975.6	-464.4	2.00	-2.00	0.00
5,900.0	0.00	0.00	5,770.9	609.9	-975.6	-464.4	0.00	0.00	0.00
5,977.9	0.00	0.00	5,848.8	609.9	-975.6	-464.4	0.00	0.00	0.00
<b>KOP #2</b>									
6,000.0	1.77	180.73	5,870.9	609.5	-975.6	-464.0	8.00	8.00	0.00
6,100.0	9.77	180.73	5,970.3	599.5	-975.7	-454.1	8.00	8.00	0.00
6,200.0	17.77	180.73	6,067.4	575.7	-976.1	-430.5	8.00	8.00	0.00
6,300.0	25.77	180.73	6,160.2	538.7	-976.5	-393.7	8.00	8.00	0.00
6,400.0	33.77	180.73	6,246.9	489.1	-977.2	-344.6	8.00	8.00	0.00
6,500.0	41.77	180.73	6,325.9	427.9	-977.9	-283.9	8.00	8.00	0.00
6,600.0	49.77	180.73	6,395.6	356.3	-978.9	-212.9	8.00	8.00	0.00
6,700.0	57.77	180.73	6,454.6	275.7	-979.9	-133.0	8.00	8.00	0.00
6,800.0	65.77	180.73	6,501.9	187.7	-981.0	-45.7	8.00	8.00	0.00
6,900.0	73.77	180.73	6,536.5	93.9	-982.2	47.3	8.00	8.00	0.00
7,000.0	81.77	180.73	6,557.6	-3.7	-983.5	144.1	8.00	8.00	0.00
7,100.0	89.77	180.73	6,565.0	-103.4	-984.8	242.9	8.00	8.00	0.00
7,102.9	90.00	180.73	6,565.0	-106.3	-984.8	245.8	8.00	8.00	0.00
7,103.7	90.00	180.73	6,565.0	-107.1	-984.8	246.6	0.00	0.00	0.00
<b>End of Build - 7" - Landing Pt. 2365'FSL &amp; 320'FWL, Sec.29</b>									
7,200.0	90.00	180.73	6,565.0	-203.4	-986.0	342.0	0.00	0.00	0.00
7,300.0	90.00	180.73	6,565.0	-303.3	-987.3	441.2	0.00	0.00	0.00
7,400.0	90.00	180.73	6,565.0	-403.3	-988.6	540.3	0.00	0.00	0.00
7,500.0	90.00	180.73	6,565.0	-503.3	-989.9	639.5	0.00	0.00	0.00
7,600.0	90.00	180.73	6,565.0	-603.3	-991.2	738.6	0.00	0.00	0.00
7,700.0	90.00	180.73	6,565.0	-703.3	-992.4	837.8	0.00	0.00	0.00
7,800.0	90.00	180.73	6,565.0	-803.3	-993.7	936.9	0.00	0.00	0.00
7,900.0	90.00	180.73	6,565.0	-903.3	-995.0	1,036.1	0.00	0.00	0.00
8,000.0	90.00	180.73	6,565.0	-1,003.3	-996.3	1,135.2	0.00	0.00	0.00
8,100.0	90.00	180.73	6,565.0	-1,103.3	-997.6	1,234.4	0.00	0.00	0.00
8,200.0	90.00	180.73	6,565.0	-1,203.3	-998.8	1,333.5	0.00	0.00	0.00
8,300.0	90.00	180.73	6,565.0	-1,303.3	-1,000.1	1,432.7	0.00	0.00	0.00
8,400.0	90.00	180.73	6,565.0	-1,403.3	-1,001.4	1,531.8	0.00	0.00	0.00
8,500.0	90.00	180.73	6,565.0	-1,503.2	-1,002.7	1,631.0	0.00	0.00	0.00
8,600.0	90.00	180.73	6,565.0	-1,603.2	-1,004.0	1,730.1	0.00	0.00	0.00
8,700.0	90.00	180.73	6,565.0	-1,703.2	-1,005.3	1,829.3	0.00	0.00	0.00
8,800.0	90.00	180.73	6,565.0	-1,803.2	-1,006.5	1,928.4	0.00	0.00	0.00
8,900.0	90.00	180.73	6,565.0	-1,903.2	-1,007.8	2,027.6	0.00	0.00	0.00
9,000.0	90.00	180.73	6,565.0	-2,003.2	-1,009.1	2,126.7	0.00	0.00	0.00
9,100.0	90.00	180.73	6,565.0	-2,103.2	-1,010.4	2,225.9	0.00	0.00	0.00
9,200.0	90.00	180.73	6,565.0	-2,203.2	-1,011.7	2,325.0	0.00	0.00	0.00
9,300.0	90.00	180.73	6,565.0	-2,303.2	-1,012.9	2,424.2	0.00	0.00	0.00
9,400.0	90.00	180.73	6,565.0	-2,403.2	-1,014.2	2,523.3	0.00	0.00	0.00
9,500.0	90.00	180.73	6,565.0	-2,503.2	-1,015.5	2,622.5	0.00	0.00	0.00
9,600.0	90.00	180.73	6,565.0	-2,603.2	-1,016.8	2,721.6	0.00	0.00	0.00

<b>Database:</b>	landmark	<b>Local Co-ordinate Reference:</b>	Well White 29-1H
<b>Company:</b>	Red Hawk Petroleum, LLC.	<b>TVD Reference:</b>	WELL @ 5006.0ft (RKB - 20')
<b>Project:</b>	Sec.29-T8N-R61W	<b>MD Reference:</b>	WELL @ 5006.0ft (RKB - 20')
<b>Site:</b>	White Pad Sec. 29-T8N-R61W	<b>North Reference:</b>	True
<b>Well:</b>	White 29-1H	<b>Survey Calculation Method:</b>	Minimum Curvature
<b>Wellbore:</b>	Wellbore #1		
<b>Design:</b>	Plan #1 (4-28-14)		

Planned Survey									
Measured Depth (ft)	Inclination (°)	Azimuth (°)	Vertical Depth (ft)	+N/-S (ft)	+E/-W (ft)	Vertical Section (ft)	Dogleg Rate (°/100ft)	Build Rate (°/100ft)	Turn Rate (°/100ft)
9,700.0	90.00	180.73	6,565.0	-2,703.1	-1,018.1	2,820.8	0.00	0.00	0.00
9,800.0	90.00	180.73	6,565.0	-2,803.1	-1,019.4	2,920.0	0.00	0.00	0.00
9,900.0	90.00	180.73	6,565.0	-2,903.1	-1,020.6	3,019.1	0.00	0.00	0.00
10,000.0	90.00	180.73	6,565.0	-3,003.1	-1,021.9	3,118.3	0.00	0.00	0.00
10,100.0	90.00	180.73	6,565.0	-3,103.1	-1,023.2	3,217.4	0.00	0.00	0.00
10,200.0	90.00	180.73	6,565.0	-3,203.1	-1,024.5	3,316.6	0.00	0.00	0.00
10,300.0	90.00	180.73	6,565.0	-3,303.1	-1,025.8	3,415.7	0.00	0.00	0.00
10,400.0	90.00	180.73	6,565.0	-3,403.1	-1,027.0	3,514.9	0.00	0.00	0.00
10,500.0	90.00	180.73	6,565.0	-3,503.1	-1,028.3	3,614.0	0.00	0.00	0.00
10,600.0	90.00	180.73	6,565.0	-3,603.1	-1,029.6	3,713.2	0.00	0.00	0.00
10,700.0	90.00	180.73	6,565.0	-3,703.1	-1,030.9	3,812.3	0.00	0.00	0.00
10,800.0	90.00	180.73	6,565.0	-3,803.1	-1,032.2	3,911.5	0.00	0.00	0.00
10,900.0	90.00	180.73	6,565.0	-3,903.1	-1,033.4	4,010.6	0.00	0.00	0.00
11,000.0	90.00	180.73	6,565.0	-4,003.0	-1,034.7	4,109.8	0.00	0.00	0.00
11,100.0	90.00	180.73	6,565.0	-4,103.0	-1,036.0	4,208.9	0.00	0.00	0.00
11,200.0	90.00	180.73	6,565.0	-4,203.0	-1,037.3	4,308.1	0.00	0.00	0.00
11,300.0	90.00	180.73	6,565.0	-4,303.0	-1,038.6	4,407.2	0.00	0.00	0.00
11,400.0	90.00	180.73	6,565.0	-4,403.0	-1,039.9	4,506.4	0.00	0.00	0.00
11,500.0	90.00	180.73	6,565.0	-4,503.0	-1,041.1	4,605.5	0.00	0.00	0.00
11,600.0	90.00	180.73	6,565.0	-4,603.0	-1,042.4	4,704.7	0.00	0.00	0.00
11,700.0	90.00	180.73	6,565.0	-4,703.0	-1,043.7	4,803.8	0.00	0.00	0.00
11,800.0	90.00	180.73	6,565.0	-4,803.0	-1,045.0	4,903.0	0.00	0.00	0.00
11,900.0	90.00	180.73	6,565.0	-4,903.0	-1,046.3	5,002.1	0.00	0.00	0.00
12,000.0	90.00	180.73	6,565.0	-5,003.0	-1,047.5	5,101.3	0.00	0.00	0.00
12,100.0	90.00	180.73	6,565.0	-5,103.0	-1,048.8	5,200.4	0.00	0.00	0.00
12,200.0	90.00	180.73	6,565.0	-5,202.9	-1,050.1	5,299.6	0.00	0.00	0.00
12,300.0	90.00	180.73	6,565.0	-5,302.9	-1,051.4	5,398.7	0.00	0.00	0.00
12,400.0	90.00	180.73	6,565.0	-5,402.9	-1,052.7	5,497.9	0.00	0.00	0.00
12,500.0	90.00	180.73	6,565.0	-5,502.9	-1,053.9	5,597.0	0.00	0.00	0.00
12,600.0	90.00	180.73	6,565.0	-5,602.9	-1,055.2	5,696.2	0.00	0.00	0.00
12,700.0	90.00	180.73	6,565.0	-5,702.9	-1,056.5	5,795.3	0.00	0.00	0.00
12,800.0	90.00	180.73	6,565.0	-5,802.9	-1,057.8	5,894.5	0.00	0.00	0.00
12,900.0	90.00	180.73	6,565.0	-5,902.9	-1,059.1	5,993.6	0.00	0.00	0.00
13,000.0	90.00	180.73	6,565.0	-6,002.9	-1,060.4	6,092.8	0.00	0.00	0.00
13,100.0	90.00	180.73	6,565.0	-6,102.9	-1,061.6	6,191.9	0.00	0.00	0.00
13,200.0	90.00	180.73	6,565.0	-6,202.9	-1,062.9	6,291.1	0.00	0.00	0.00
13,300.0	90.00	180.73	6,565.0	-6,302.9	-1,064.2	6,390.2	0.00	0.00	0.00
13,400.0	90.00	180.73	6,565.0	-6,402.8	-1,065.5	6,489.4	0.00	0.00	0.00
13,500.0	90.00	180.73	6,565.0	-6,502.8	-1,066.8	6,588.5	0.00	0.00	0.00
13,600.0	90.00	180.73	6,565.0	-6,602.8	-1,068.0	6,687.7	0.00	0.00	0.00
13,700.0	90.00	180.73	6,565.0	-6,702.8	-1,069.3	6,786.8	0.00	0.00	0.00
13,800.0	90.00	180.73	6,565.0	-6,802.8	-1,070.6	6,886.0	0.00	0.00	0.00
13,900.0	90.00	180.73	6,565.0	-6,902.8	-1,071.9	6,985.1	0.00	0.00	0.00
14,000.0	90.00	180.73	6,565.0	-7,002.8	-1,073.2	7,084.3	0.00	0.00	0.00
14,100.0	90.00	180.73	6,565.0	-7,102.8	-1,074.4	7,183.4	0.00	0.00	0.00
14,200.0	90.00	180.73	6,565.0	-7,202.8	-1,075.7	7,282.6	0.00	0.00	0.00
14,300.0	90.00	180.73	6,565.0	-7,302.8	-1,077.0	7,381.7	0.00	0.00	0.00
14,400.0	90.00	180.73	6,565.0	-7,402.8	-1,078.3	7,480.9	0.00	0.00	0.00
14,480.4	90.00	180.73	6,565.0	-7,483.2	-1,079.3	7,560.6	0.00	0.00	0.00
BHL 300'FSL & 300'FWL, Sec.32									

<b>Database:</b>	landmark	<b>Local Co-ordinate Reference:</b>	Well White 29-1H
<b>Company:</b>	Red Hawk Petroleum, LLC.	<b>TVD Reference:</b>	WELL @ 5006.0ft (RKB - 20')
<b>Project:</b>	Sec.29-T8N-R61W	<b>MD Reference:</b>	WELL @ 5006.0ft (RKB - 20')
<b>Site:</b>	White Pad Sec. 29-T8N-R61W	<b>North Reference:</b>	True
<b>Well:</b>	White 29-1H	<b>Survey Calculation Method:</b>	Minimum Curvature
<b>Wellbore:</b>	Wellbore #1		
<b>Design:</b>	Plan #1 (4-28-14)		

Casing Points					
Measured Depth (ft)	Vertical Depth (ft)	Name		Casing Diameter (")	Hole Diameter (")
7,103.7	6,565.0	7"		7	7-1/2

Plan Annotations					
Measured Depth (ft)	Vertical Depth (ft)	Local Coordinates		Comment	
		+N/-S (ft)	+E/-W (ft)		
200.0	200.0	0.0	0.0	KOP #1	
5,977.9	5,848.8	609.9	-975.6	KOP #2	
7,103.7	6,565.0	-107.1	-984.8	End of Build	