

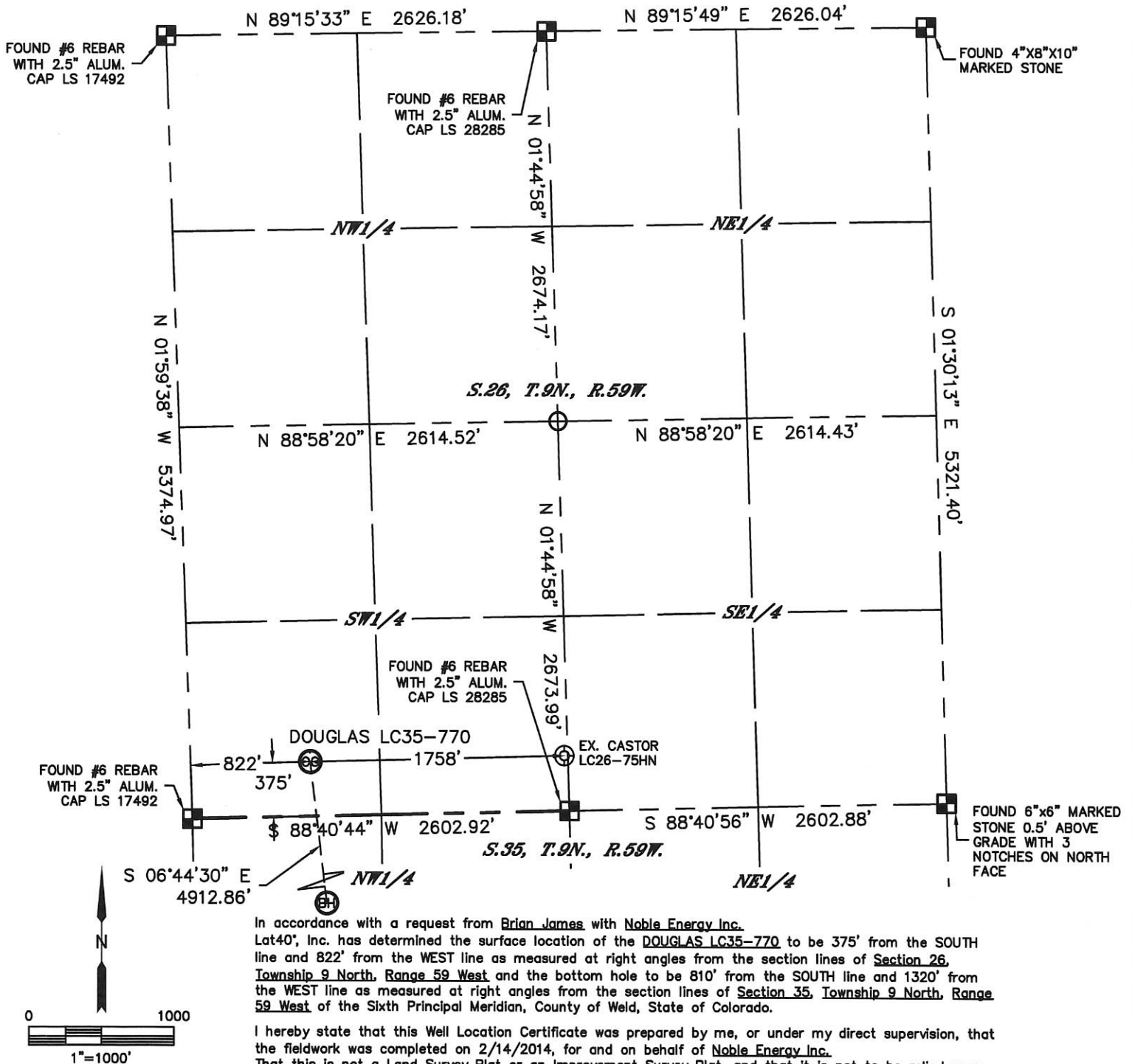


Lat40°, Inc. 1635 Foxtrail Drive, Suite 325 Loveland, CO 970-776-3321

WELL LOCATION CERTIFICATE

SECTION: 26
TOWNSHIP: 9N
RANGE: 59W

THIS MAP DOES NOT REPRESENT A BOUNDARY SURVEY



In accordance with a request from Brian James with Noble Energy Inc. Lat40°, Inc. has determined the surface location of the DOUGLAS LC35-770 to be 375' from the SOUTH line and 822' from the WEST line as measured at right angles from the section lines of Section 26, Township 9 North, Range 59 West and the bottom hole to be 810' from the SOUTH line and 1320' from the WEST line as measured at right angles from the section lines of Section 35, Township 9 North, Range 59 West of the Sixth Principal Meridian, County of Weld, State of Colorado.

I hereby state that this Well Location Certificate was prepared by me, or under my direct supervision, that the fieldwork was completed on 2/14/2014, for and on behalf of Noble Energy Inc. That this is not a Land Survey Plat or an Improvement Survey Plat, and that it is not to be relied upon for establishment of fence, building, or other future improvement lines.

NOTE:

- 1) Bearings shown are Grid Bearings of the Colorado State Plane Coordinate System, North Zone, North American Datum 1983/2007. The lineal dimensions as contained herein are based upon the "U.S. Survey Foot."
 - 2) Ground elevations are based on an observed GPS elevation (NAVD 1988 DATUM).
 - 3) IMPROVEMENTS: See LOCATION DRAWING for all visible improvements within 500' of disturbed area.
 - 4) SURFACE USE: RANGELAND
 - 5) INSTRUMENT OPERATOR: BRIAN ROTTINGHAUS
 - 6) NEAREST EXISTING WELL: CASTOR LC26-75HN, 1758' E
- NEAREST CULTURAL ITEMS:
BUILDING: 5280'+
BUILDING UNIT: 5280'+
HIGH OCCUPANCY BUILDING UNIT: 5280'+
DESIGNATED OUTSIDE ACTIVITY AREA: 5280'+
PUBLIC ROAD: 5280'+
ABOVEGROUND UTILITY: 308' S
RAILROAD: 5280'+
PROPERTY LINE: 375' S

SURFACE LOCATION
LAT: 40.71534°N
LONG: 103.95129°W
PDOP: 1.9
ELEV: 4812'
1/4,1/4: SW1/4SW1/4

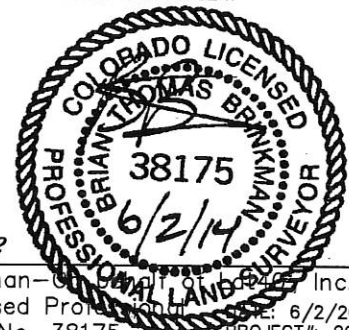
BOTTOM HOLE
LAT: 40.70193°N
LONG: 103.94952°W

LEGEND

- = ALIQUOT MONUMENT AS DESCRIBED
○ = CALCULATED POSITION

SHEET 1 OF 2

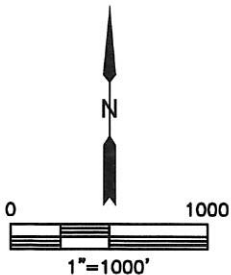
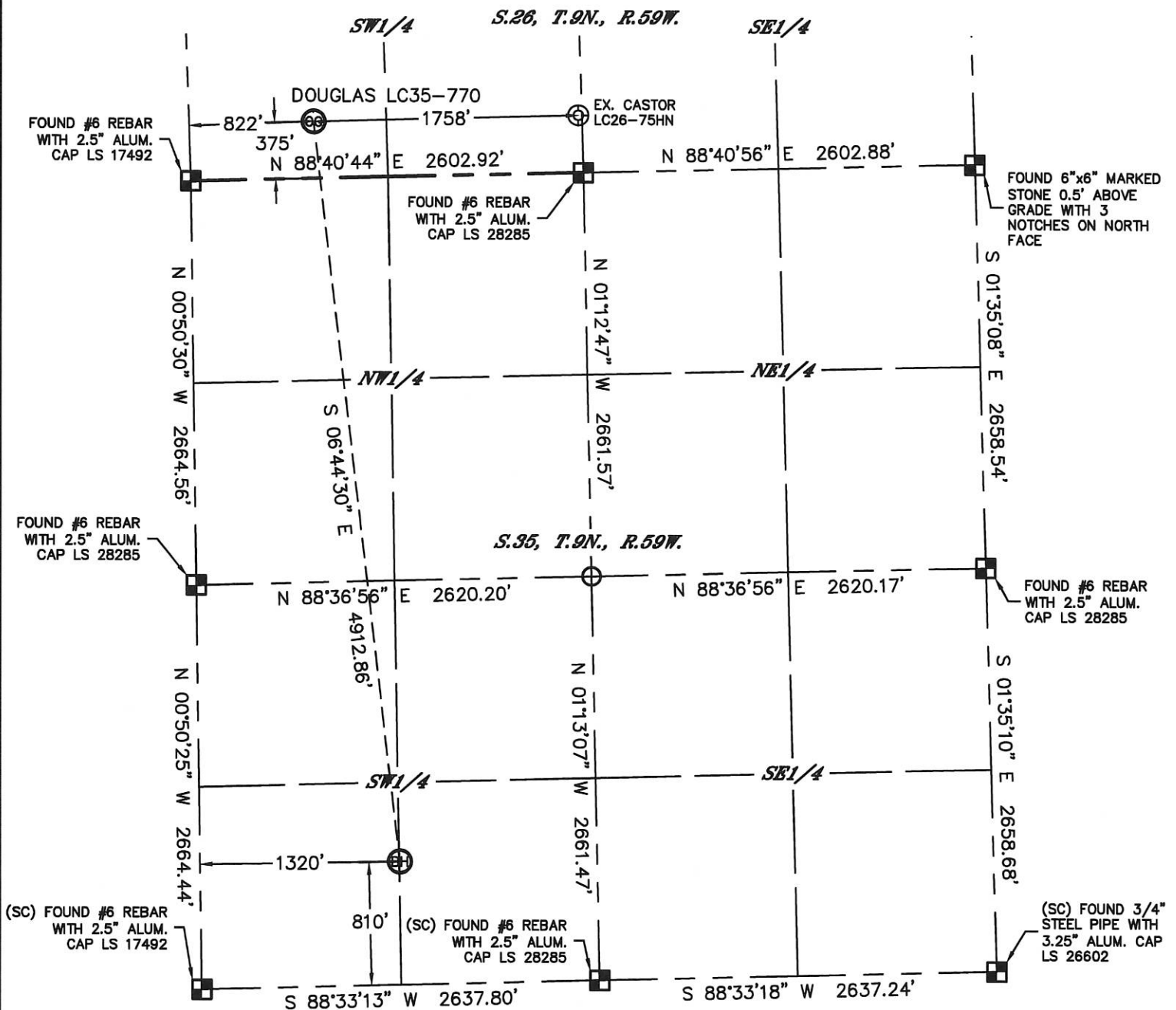
Brian T. Brinkman—Colorado Licensed Professional Land Surveyor
Colorado Licensed Professional Land Surveyor No. 38175
PROJECT#: 2013186





WELL LOCATION CERTIFICATE

THIS MAP DOES NOT REPRESENT A BOUNDARY SURVEY

SECTION: 26
TOWNSHIP: 9N
RANGE: 59W



LEGEND

-  = ALIQUOT MONUMENT AS DESCRIBED
 = CALCULATED POSITION

SHEET 2 OF 2

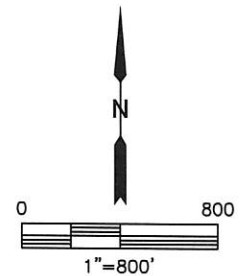
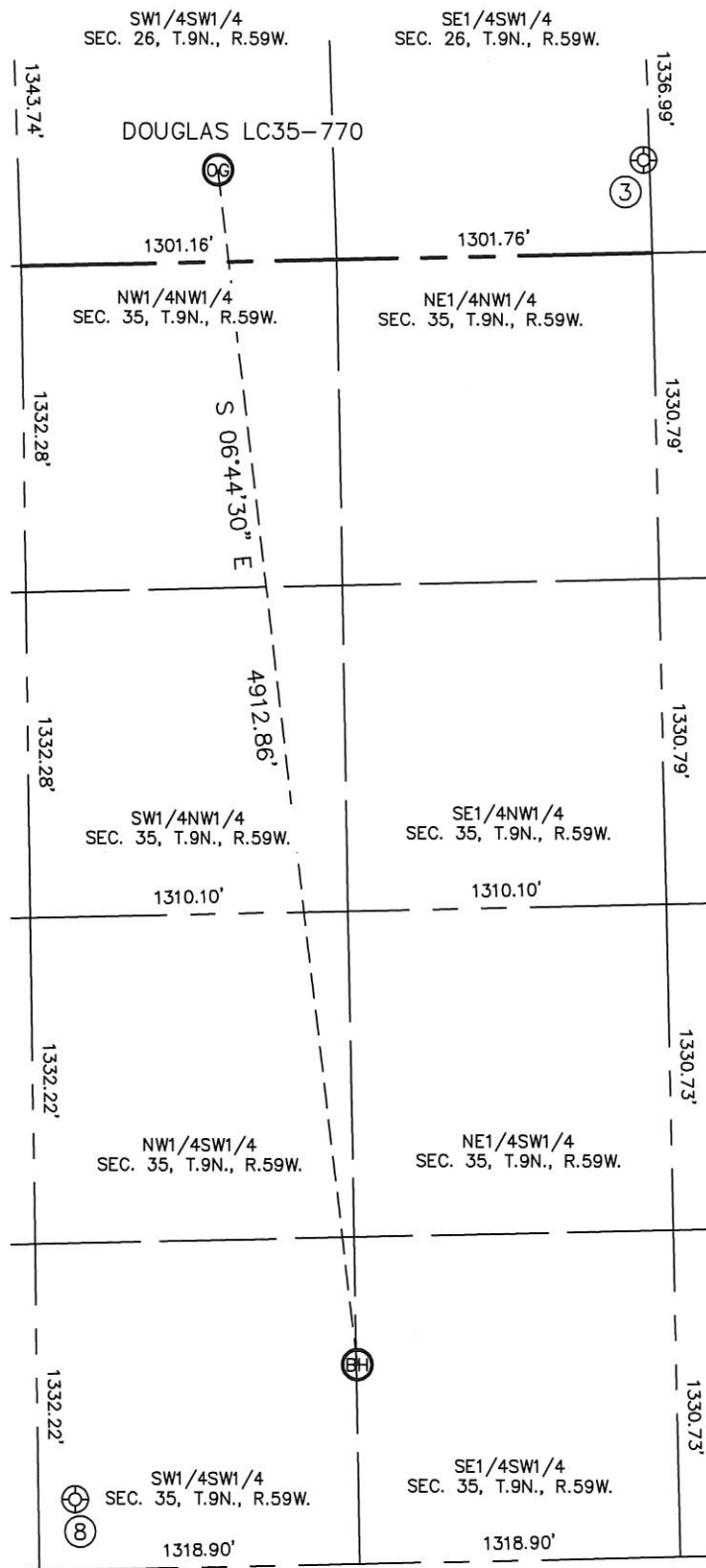
Brian T. Brinkman—CO. 0001 of 0407 Inc.
Colorado Licensed Professional Surveyor No. 38175
Land Surveyor No. 38175
DATE: 6/2/2014
PROJECT#: 2013186





SITE SKETCH

DOUGLAS LC35-770

SECTION: 26
TOWNSHIP: 9N
RANGE: 59W

WELL NO.	WELL NAME	SHL FOOTAGE				SHL LAT°	SHL LONG°	PDOP	ELEV (FT.)	1/4/1/4
3	CASTOR LC26-75HN	380	FSL	2580	FWL	40.71538	-103.94496	2.9	4824	SESW
8	CASTOR LC35-62HN	287	FSL	150	FWL	40.70047	-103.95374	1.9	4838	SWSW