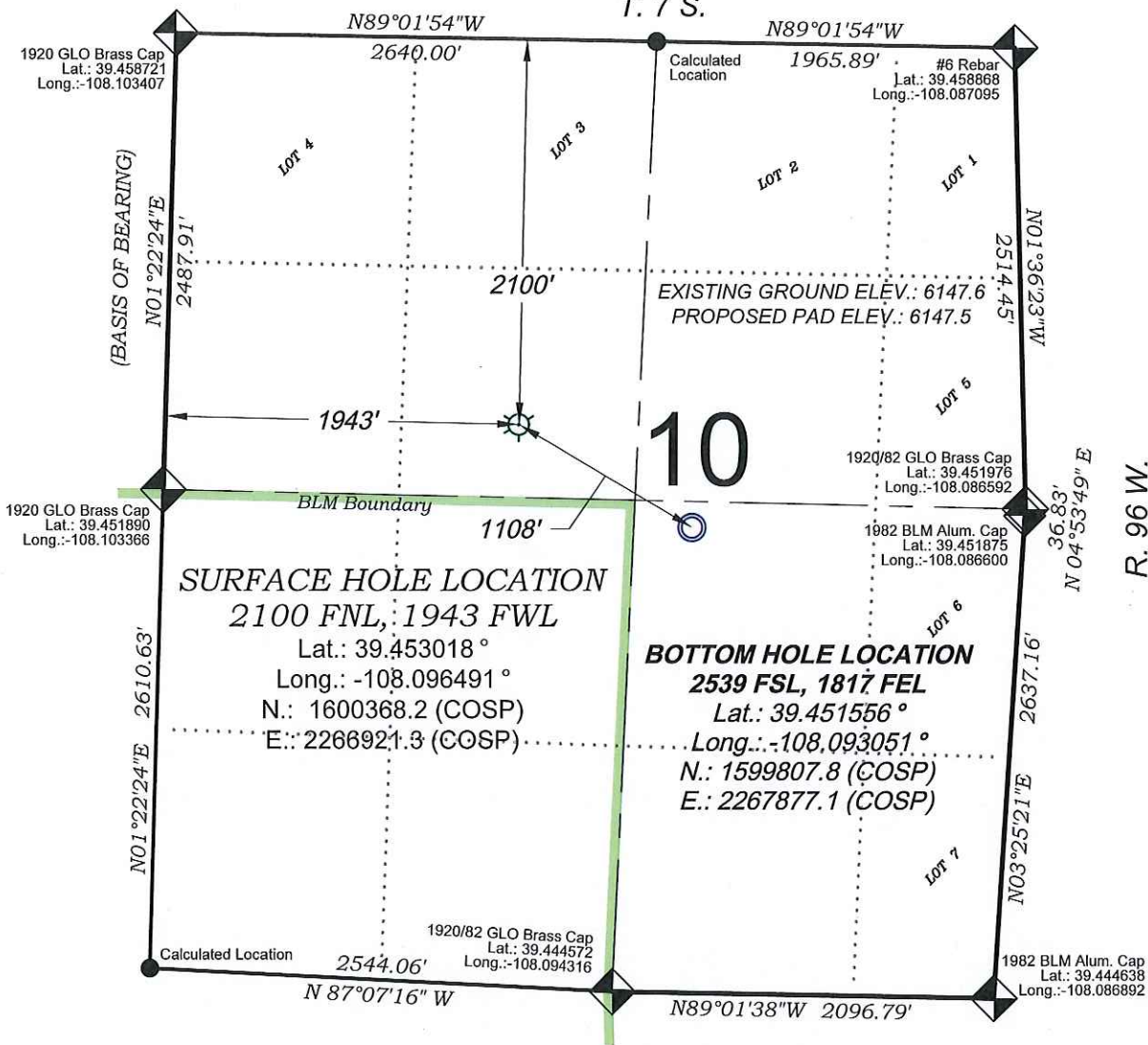
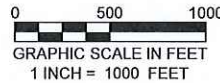


Federal GM 33-10

T. 7 S.



SEE CONSTRUCTION LAYOUT
PLAT FOR VISIBLE IMPROVEMENTS
WITHIN 500' OF THIS LOCATION



- LEGEND -

- FIELD LOCATED SECTION MONUMENTS AS DESCRIBED
- FIELD SURVEYED WELL LOCATION
- CALCULATED BOTTOM HOLE LOCATION
- CALCULATED SECTION CORNER LOCATION

SURVEYORS STATEMENT

I, MICHAEL J. LANGHORNE, A REGISTERED LAND SURVEYOR IN THE STATE OF COLORADO DO HEREBY CERTIFY THAT THE SURVEY SHOWN HEREON WAS PREPARED UNDER MY DIRECT SUPERVISION AND HAS BEEN STAKED ON THE GROUND AS SHOWN ON THE PLAT AND CHECKING THAT THIS MAP IS A TRUE REPRESENTATION THEREOF.

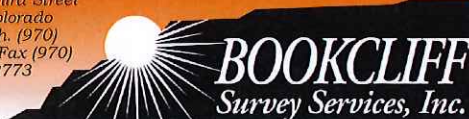
Michael J. Langhorne

MICHAEL J. LANGHORNE, COLORADO REGISTRATION NO. 36572
FOR AND ON BEHALF OF
BOOKCLIFF SURVEY SERVICES, INC.

REFERENCES

- 1) Dependent Resurvey and Extension Survey T. 7 S., R. 95 W., 6th P.M (GLO PLAT)
- 2) U.S.G.S. QUAD: Parachute, CO

136 East Third Street
Rifle, Colorado
81650 Ph. (970)
625-2720 Fax (970)
625-2773



SURVEY DATE: 7/29/14
MAP DATE: 9/23/14
SCALE: 1" = 1000'
PLAT: 1 of 1
PROJECT: Valley

NOTES

- 1) ELEVATIONS BASED ON N.A.V.D. 1988 PUBLISHED COORDINATES.
- 2) LATITUDES AND LONGITUDES ARE BASE ON NAD 83, PUBLISHED COORDINATES
- 3) STATE PLANE COORDINATES ARE BASED ON COLORADO CENTRAL ZONE, U.S. SURVEY FEET.
- 4) ELEVATION MASK SET TO 15°
- 5) GPS OPERATOR J. KIRKPATRICK, OBSERVED A PDOP OF 2.2 ON SURVEY POINT NUMBER 435.
- 6) SURFACE AND BOTTOM HOLE LOCATIONS ARE MEASURED 90° FROM SECTION LINES.

WELL LOCATION PLAT Prepared for:
WPXENERGY

WPX Energy Rocky Mountain, LLC

SE1/4 NW1/4, SECTION 10
T. 7 S., R. 96 W. of the 6th P.M.
GARFIELD COUNTY, COLORADO