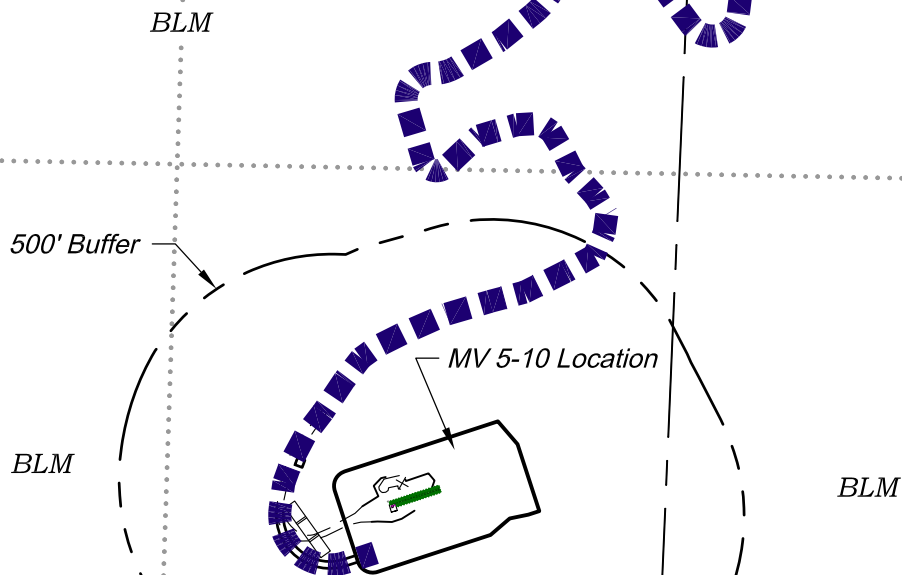


Section 10  
T. 7 S., R. 96 W.

0 250 500  
GRAPHIC SCALE IN FEET  
1 INCH = 500 FEET



CURRENT LAND USE		
<input type="checkbox"/> CROP LAND	<input checked="" type="checkbox"/> NON-CROP LAND	<input type="checkbox"/> SUBDIVIDED
<input type="checkbox"/> IRRIGATED	<input checked="" type="checkbox"/> RANGELAND	<input type="checkbox"/> INDUSTRIAL
<input type="checkbox"/> DRY LAND	<input type="checkbox"/> TIMBER	<input type="checkbox"/> COMMERCIAL
<input type="checkbox"/> IMPROVED PASTURE	<input type="checkbox"/> RECREATIONAL	<input type="checkbox"/> RESIDENTIAL
<input type="checkbox"/> HAY MEADOW	<input checked="" type="checkbox"/> OTHER (describe): Existing Drill Pad	
<input type="checkbox"/> CRP		

136 East Third Street  
Rifle, Colorado 81650  
Ph. (970) 625-2720  
Fax (970) 625-2773



**BOOKCLIFF**  
Survey Services, Inc.

SCALE: 1" = 500'  
DATE: 9/24/14  
PLAT: 6 of 7  
PROJECT: Valley  
DFT: cs

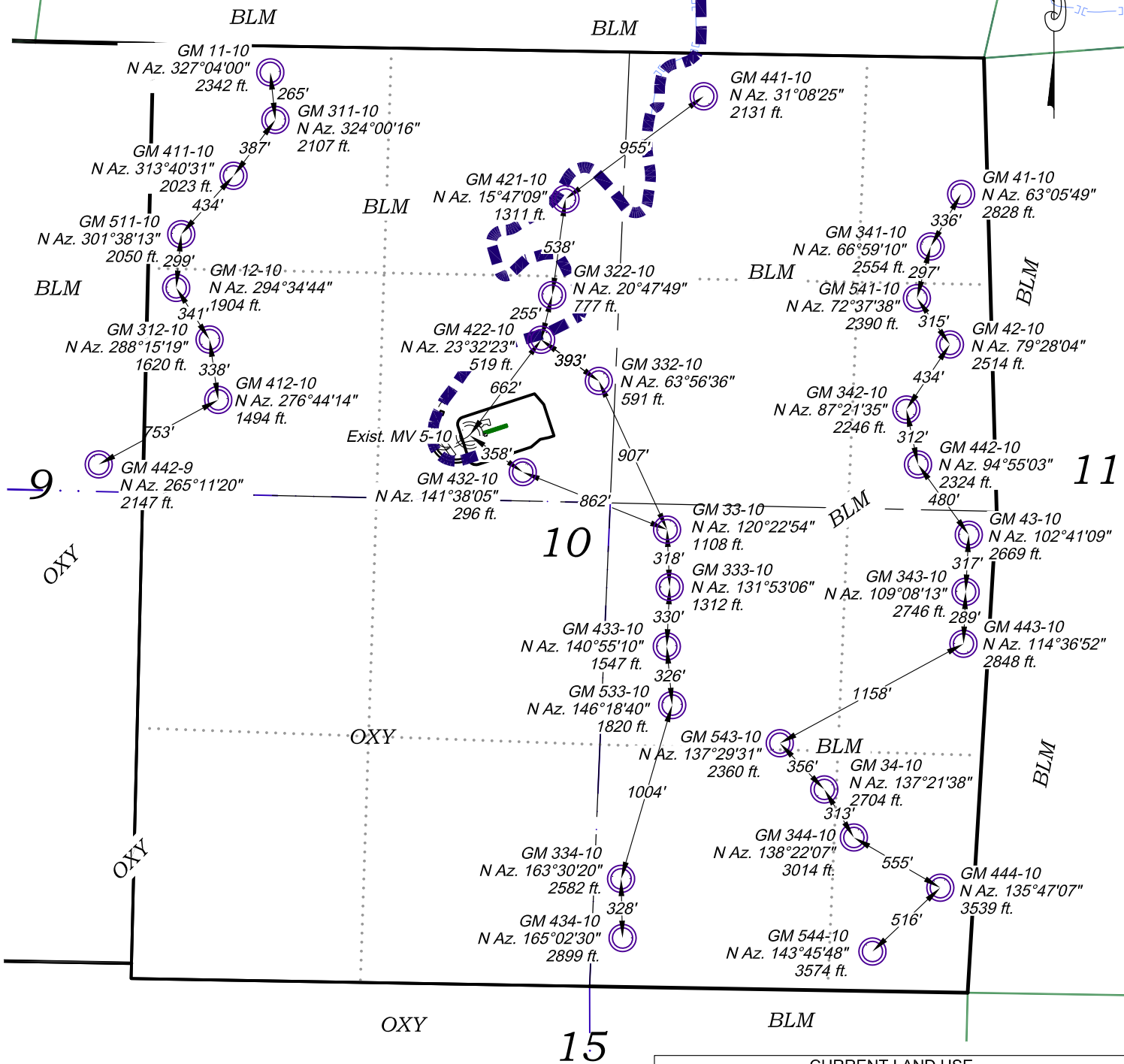
**Construction Plan Prepared for:**  
**WPX ENERGY** WPX Energy Rocky Mountain, LLC

*MV 5-10 Drill Pad - Plat 6  
LOCATION*

Section 10  
T. 7 S., R. 96 W.

3

0 400 800  
GRAPHIC SCALE IN FEET  
1 INCH = 800 FEET



CURRENT LAND USE		
<input type="checkbox"/> CROP LAND	<input checked="" type="checkbox"/> NON-CROP LAND	<input type="checkbox"/> SUBDIVIDED
<input type="checkbox"/> IRRIGATED	<input checked="" type="checkbox"/> RANGELAND	<input type="checkbox"/> INDUSTRIAL
<input type="checkbox"/> DRY LAND	<input type="checkbox"/> TIMBER	<input type="checkbox"/> COMMERCIAL
<input type="checkbox"/> IMPROVED PASTURE	<input type="checkbox"/> RECREATIONAL	<input type="checkbox"/> RESIDENTIAL
<input type="checkbox"/> HAY MEADOW	<input checked="" type="checkbox"/> OTHER (describe): Existing Drill Pad	
<input type="checkbox"/> CRP		

**Construction Plan Prepared for:**  
**WPX ENERGY** WPX Energy Rocky Mountain, LLC  
**MV 5-10 Drill Pad - Plat 6A**  
**LOCATION SUPPLEMENT**

136 East Third Street  
Rifle, Colorado 81650  
Ph. (970) 625-2720  
Fax (970) 625-2773



**BOOKCLIFF**  
Survey Services, Inc.

SCALE: 1" = 800'  
DATE: 9/24/14  
PLAT: 6A of 7  
PROJECT: Valley  
DFT: cs

*Visible Improvements to Well Head  
(ft.)*

<i>Description</i>	<i>Building</i>	<i>Building Unit</i>	<i>High Occu. Building</i>	<i>DOAA</i>	<i>Public Road</i>	<i>Above Ground Utility</i>	<i>Railroad</i>	<i>Property Line</i>
GM 434-10	>5280	>5280	>5280	>5280	>5280	>5280	>5280	181° 374
GM 334-10	>5280	>5280	>5280	>5280	>5280	>5280	>5280	181° 376
GM 533-10	>5280	>5280	>5280	>5280	>5280	>5280	>5280	181° 379
GM 544-10	>5280	>5280	>5280	>5280	>5280	>5280	>5280	181° 381
GM 344-10	>5280	>5280	>5280	>5280	>5280	>5280	>5280	181° 384
GM 34-10	>5280	>5280	>5280	>5280	>5280	>5280	>5280	181° 386
GM 444-10	>5280	>5280	>5280	>5280	>5280	>5280	>5280	181° 389
GM 443-10	>5280	>5280	>5280	>5280	>5280	>5280	>5280	181° 391
GM 343-10	>5280	>5280	>5280	>5280	>5280	>5280	>5280	181° 393
GM 43-10	>5280	>5280	>5280	>5280	>5280	>5280	>5280	181° 396
GM 442-10	>5280	>5280	>5280	>5280	>5280	>5280	>5280	181° 398
GM 342-10	>5280	>5280	>5280	>5280	>5280	>5280	>5280	181° 401
GM 332-10	>5280	>5280	>5280	>5280	>5280	>5280	>5280	181° 403
GM 42-10	>5280	>5280	>5280	>5280	>5280	>5280	>5280	181° 406
GM 541-10	>5280	>5280	>5280	>5280	>5280	>5280	>5280	181° 408
GM 341-10	>5280	>5280	>5280	>5280	>5280	>5280	>5280	181° 411
GM 442-9	>5280	>5280	>5280	>5280	>5280	>5280	>5280	181° 378
GM 412-10	>5280	>5280	>5280	>5280	>5280	>5280	>5280	181° 381
GM 312-10	>5280	>5280	>5280	>5280	>5280	>5280	>5280	181° 383
GM 12-10	>5280	>5280	>5280	>5280	>5280	>5280	>5280	181° 386
GM 432-10	>5280	>5280	>5280	>5280	>5280	>5280	>5280	181° 388
GM 433-10	>5280	>5280	>5280	>5280	>5280	>5280	>5280	181° 390
GM 543-10	>5280	>5280	>5280	>5280	>5280	>5280	>5280	181° 393
GM 333-10	>5280	>5280	>5280	>5280	>5280	>5280	>5280	181° 395
GM 33-10	>5280	>5280	>5280	>5280	>5280	>5280	>5280	181° 398
GM 511-10	>5280	>5280	>5280	>5280	>5280	>5280	>5280	181° 400
GM 411-10	>5280	>5280	>5280	>5280	>5280	>5280	>5280	181° 403
GM 311-10	>5280	>5280	>5280	>5280	>5280	>5280	>5280	181° 405
GM 11-10	>5280	>5280	>5280	>5280	>5280	>5280	>5280	181° 408
GM 421-10	>5280	>5280	>5280	>5280	>5280	>5280	>5280	181° 410
GM 322-10	>5280	>5280	>5280	>5280	>5280	>5280	>5280	181° 413
GM 422-10	>5280	>5280	>5280	>5280	>5280	>5280	>5280	181° 415
GM 441-10	>5280	>5280	>5280	>5280	>5280	>5280	>5280	181° 418
GM 41-10	>5280	>5280	>5280	>5280	>5280	>5280	>5280	181° 420

*Production Equipment*

Seperators	>5280	>5280	>5280	>5280	>5280	>5280	>5280	181° 232
Tanks	>5280	>5280	>5280	>5280	>5280	>5280	>5280	181° 465

136 East Third Street  
Rifle, Colorado 81650  
Ph. (970) 625-2720  
Fax (970) 625-2773



**BOOKCLIFF**  
Survey Services, Inc.

SCALE: NA  
DATE: 9/24/14  
PLAT: 6B of 7  
PROJECT: Valley  
DFT: cs

**Construction Plan Prepared for:**  
**WPXENERGY** WPX Energy Rocky Mountain, LLC

*MV 5-10 Drill Pad - Plat 6B  
LOCATION TABLE*