

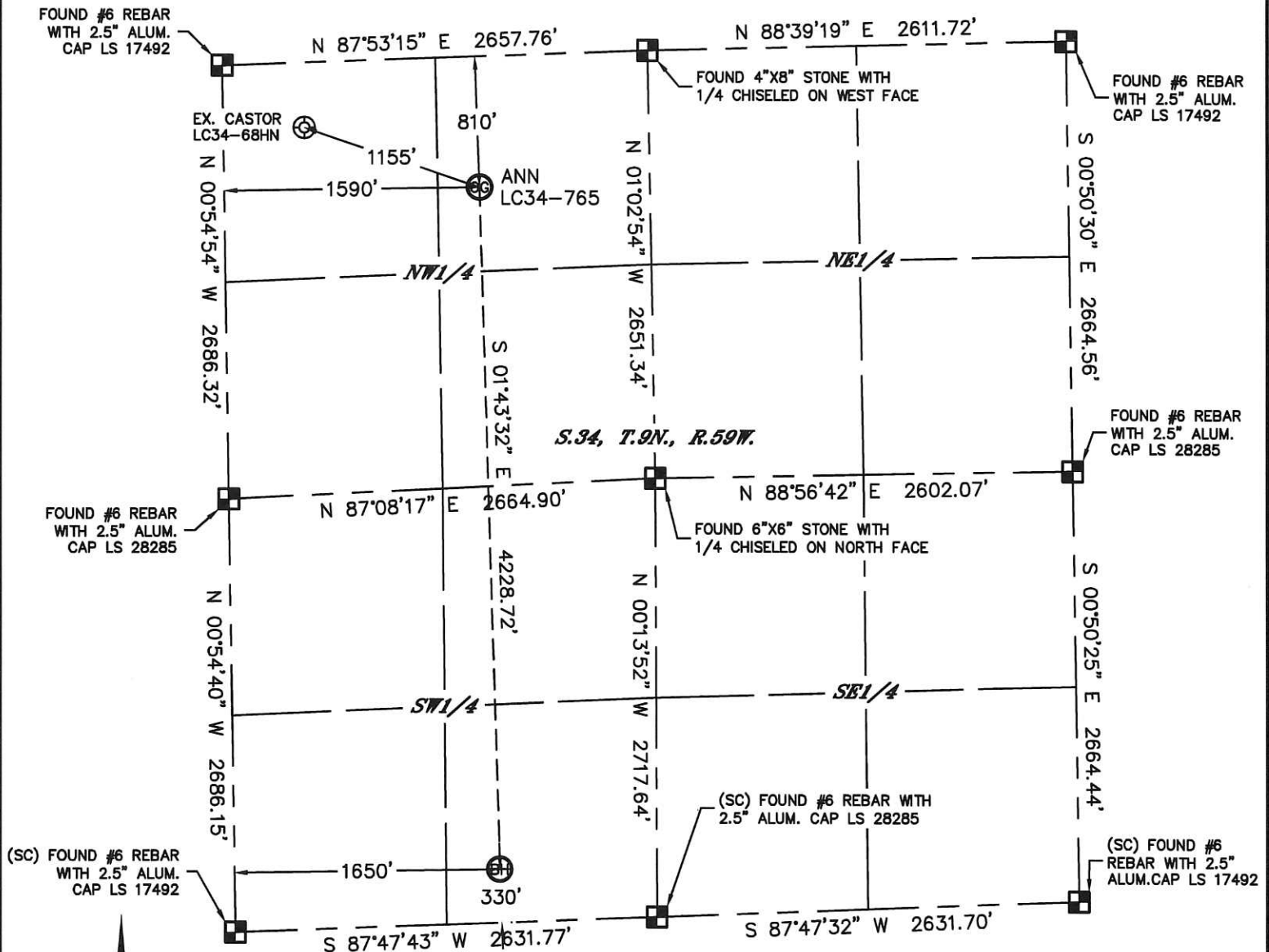


Lat40°, Inc. 1635 Foxtrail Drive, Suite 325 Loveland, CO 970-776-3321

WELL LOCATION CERTIFICATE

THIS MAP DOES NOT REPRESENT A BOUNDARY SURVEY

SECTION: 34
TOWNSHIP: 9N
RANGE: 59W



In accordance with a request from Brian James with Noble Energy Inc.

Lat40°, Inc. has determined the surface location of the ANN LC34-765 to be 810' from the NORTH line and 1590' from the WEST line and the bottom hole to be 330' from the SOUTH line and 1650' from the WEST line as measured at right angles from the section lines of Section 34, Township 9 North, Range 59 West of the Sixth Principal Meridian, County of Weld, State of Colorado.

I hereby state that this Well Location Certificate was prepared by me, or under my direct supervision, that the fieldwork was completed on 2/7/2014, for and on behalf of Noble Energy Inc. That this is not a Land Survey Plat or an Improvement Survey Plat, and that it is not to be relied upon for establishment of fence, building, or other future improvement lines.

NOTE:

- 1) Bearings shown are Grid Bearings of the Colorado State Plane Coordinate System, North Zone, North American Datum 1983/2007. The lineal dimensions as contained herein are based upon the "U.S. Survey Foot."
 - 2) Ground elevations are based on an observed GPS elevation (NAVD 1988 DATUM).
 - 3) IMPROVEMENTS: See LOCATION DRAWING for all visible improvements within 500' of disturbed area.
 - 4) SURFACE USE: RANGELAND
 - 5) INSTRUMENT OPERATOR: BRIAN ROTTINGHAUS
 - 6) NEAREST EXISTING WELL: CASTOR LC34-68HN, 1155' NW
- NEAREST CULTURAL ITEMS:
BUILDING: 5280'+
BUILDING UNIT: 5280'+
HIGH OCCUPANCY BUILDING UNIT: 5280'+
DESIGNATED OUTSIDE ACTIVITY AREA: 5280'+
PUBLIC ROAD: COUNTY ROAD 115, ±4866' SW
ABOVEGROUND UTILITY: 852' N
RAILROAD: 5280'+
PROPERTY LINE: 810' N

SURFACE LOCATION

LAT: 40.71197°N
LONG: 103.96751°W
PDOP: 1.6
ELEV: 4827'
1/4, 1/4: NE1/4NW1/4

BOTTOM HOLE

LAT: 40.70037°N
LONG: 103.96731°W

LEGEND

- = ALIQUOT MONUMENT AS DESCRIBED
○ = CALCULATED POSITION

Brian T. Brinkman—
Colorado Licensed Professional
Land Surveyor No. 38175

