



NABORS

**COMPLETION
& PRODUCTION
SERVICES CO.**

SONIC LOG

Company	MULL DRILLING COMPANY, INC.	Company	MULL DRILLING COMPANY, INC.	Location:	API # : 05-017-07795-00	Other Services CDL/CNL/PE DIL/SONIC
Well	CHAMPLIN - ALDRICH 'A' #7	Well	CHAMPLIN - ALDRICH 'A' #7			
Field	CHEYENNE WELLS	Field	CHEYENNE WELLS			
County	CHEYENNE	County	CHEYENNE			
State	COLORADO	State	COLORADO			
Permanent Datum	GROUND LEVEL	Elevation	4265			
Log Measured From	KELLY BUSHING 11' A.G.L.					
Drilling Measured From	KELLY BUSHING					
	SEC 33 TWP 13S RGE 44W					
Date	9/16/14					
Run Number	TWO					
Depth Driller	5510					
Depth Logger	5510					
Bottom Logged Interval	5502					
Top Log Interval	1700					
Casing Driller	8 5/8" @ 1745'					
Casing Logger	1738					
Bit Size	7 7/8"					
Type Fluid in Hole	CHEMICAL MUD	CHLORIDES 3,300 PPM				
Density / Viscosity	9.1/56					
pH / Fluid Loss	9.0/8.0					
Source of Sample	FLOWLINE					
Rim @ Meas. Temp	.950 @ 70F					
Rmf @ Meas. Temp	.713 @ 70F					
Rmc @ Meas. Temp	1.14 @ 70F					
Source of Rmf / Rmc	MEASUREMENT					
Rim @ BHT	.512 @ 130F					
Time Circulation Stopped	5.5 HOURS					
Time Logger on Bottom	12:30 A.M.					
Maximum Recorded Temperature	130F					
Equipment Number	4854					
Location	HAYS, KANSAS					
Recorded By	JEFF LUEBBERS					
Witnessed By	PHIL ASKEY					

<<< Fold Here >>>

All interpretations are opinions based on inferences from electrical or other measurements and we cannot and do not guarantee the accuracy or correctness of any interpretation, and we shall not, except in the case of gross or willful negligence on our part, be liable or responsible for any loss, costs, damages, or expenses incurred or sustained by anyone resulting from any interpretation made by any of our officers, agents or employees. These interpretations are also subject to our general terms and conditions set out in our current Price Schedule.

Comments

THANK YOU FOR USING "NABORS" HAYS, KANSAS (785) 628-6395
DIRECTIONS
CHEYENNE WELLS, CO., 3N. ON HWY 385 TO "RD. U", 1E. TO "RD. 45", 1/2N., W. INTO



**COMPLETION
& PRODUCTION**

MAIN SECTION

Database File:

25880pe.db

Dataset Pathname:

pass8.5

Presentation Format:

slt

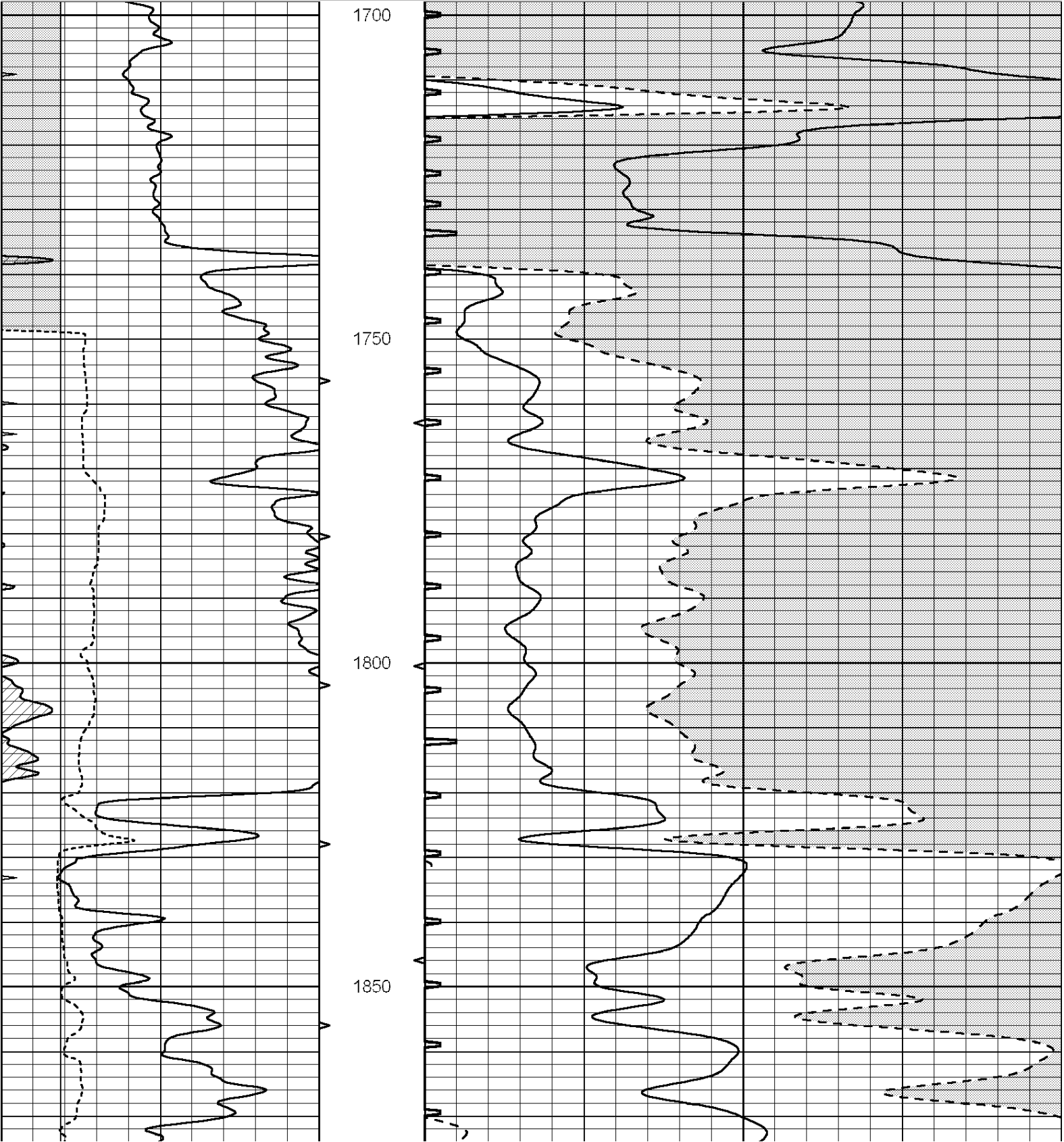
Dataset Creation:

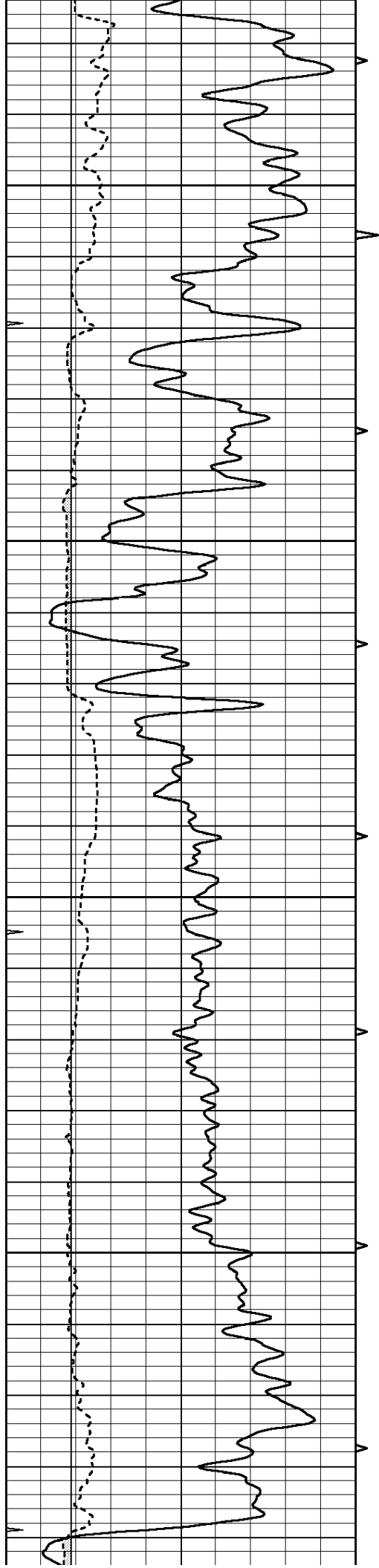
Tue Sep 16 04:46:10 2014

Charted by:

Depth in Feet scaled 1:240

0	GAMMA RAY (GAPI)	150	ABHV	140	DELTA TIME (usec/ft)		40	
6	CALIPER (in)	16	10 (ft3)	0	30	SONIC POROSITY (pu)		-10
-----			-----					
0	MINMK	20	TBHV	0	ITT (msec)	20		
			0 (ft3)	10				



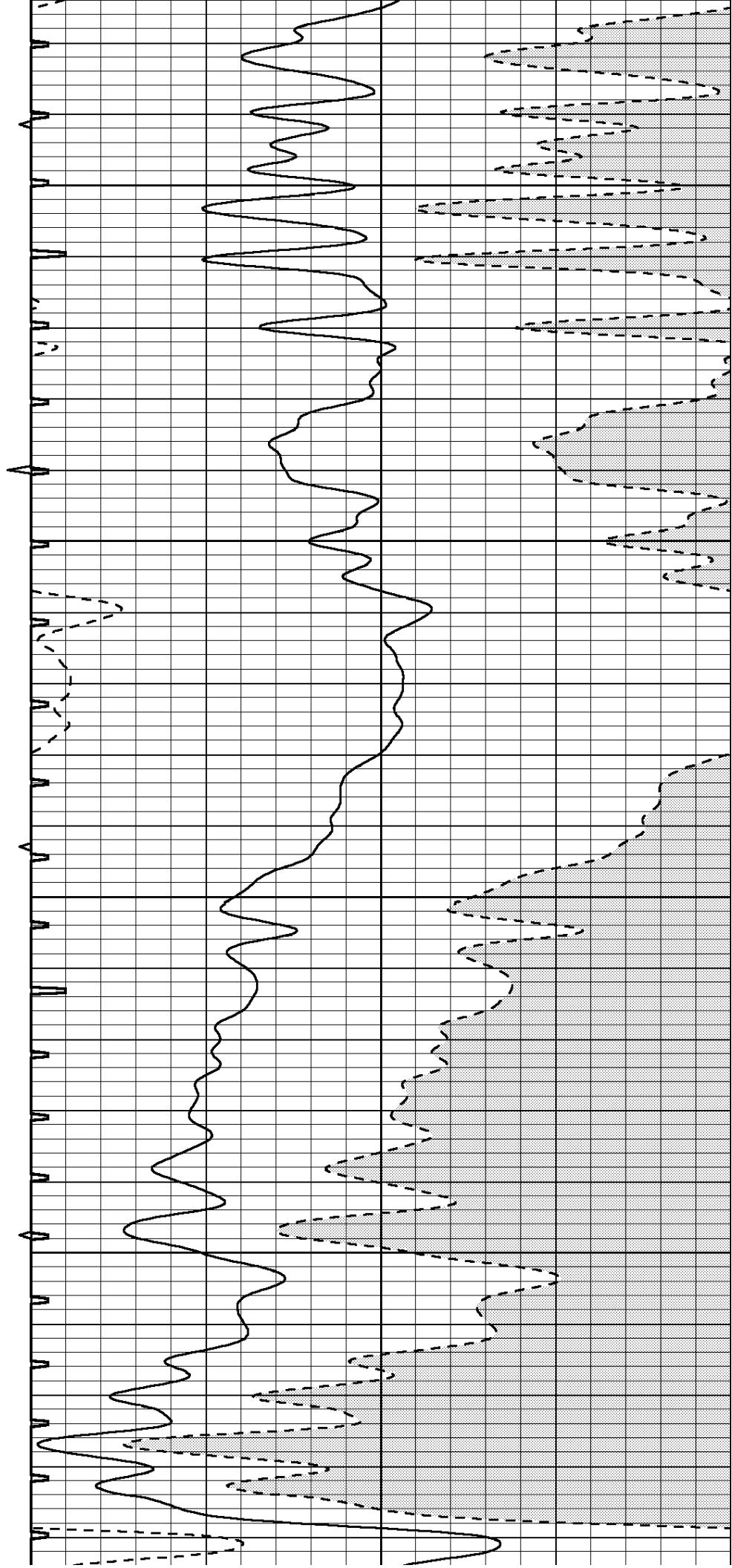


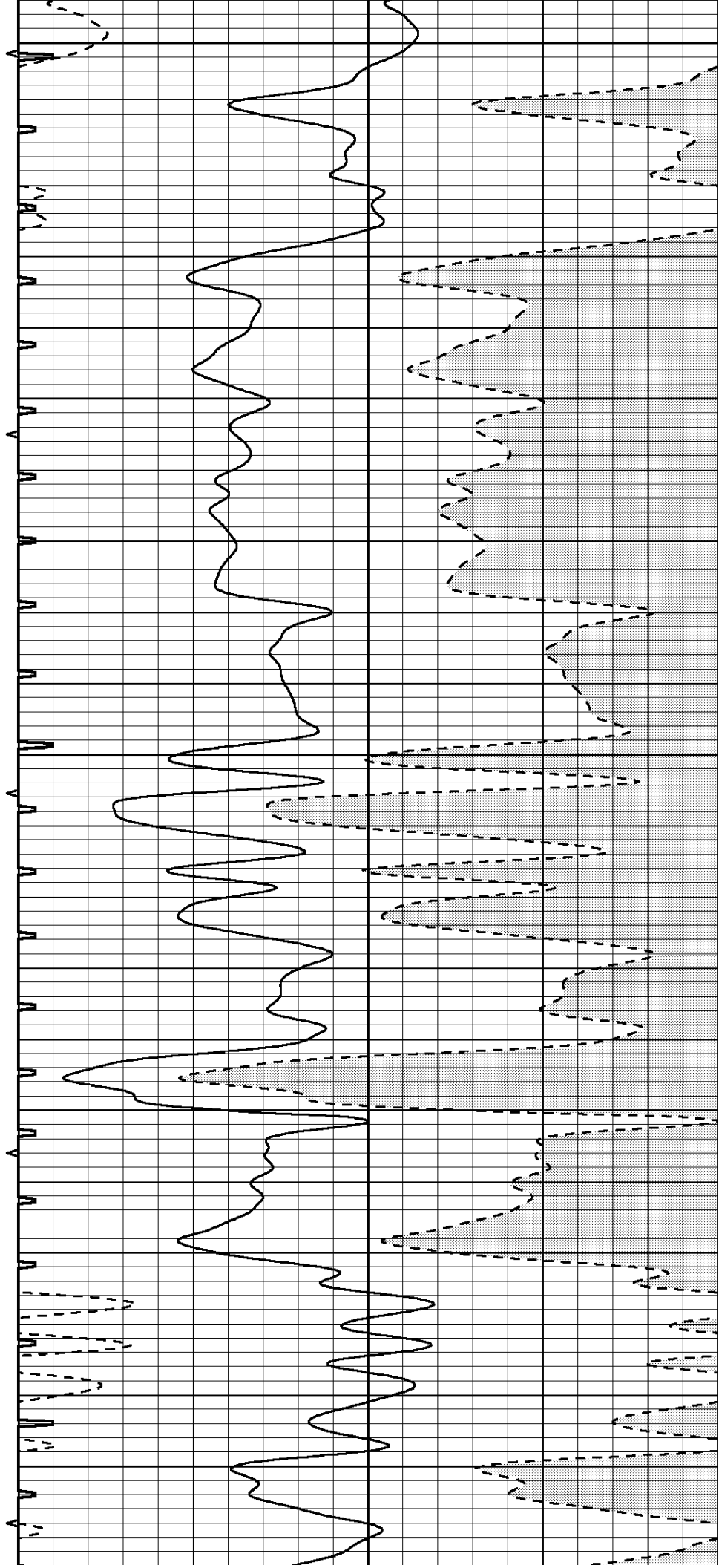
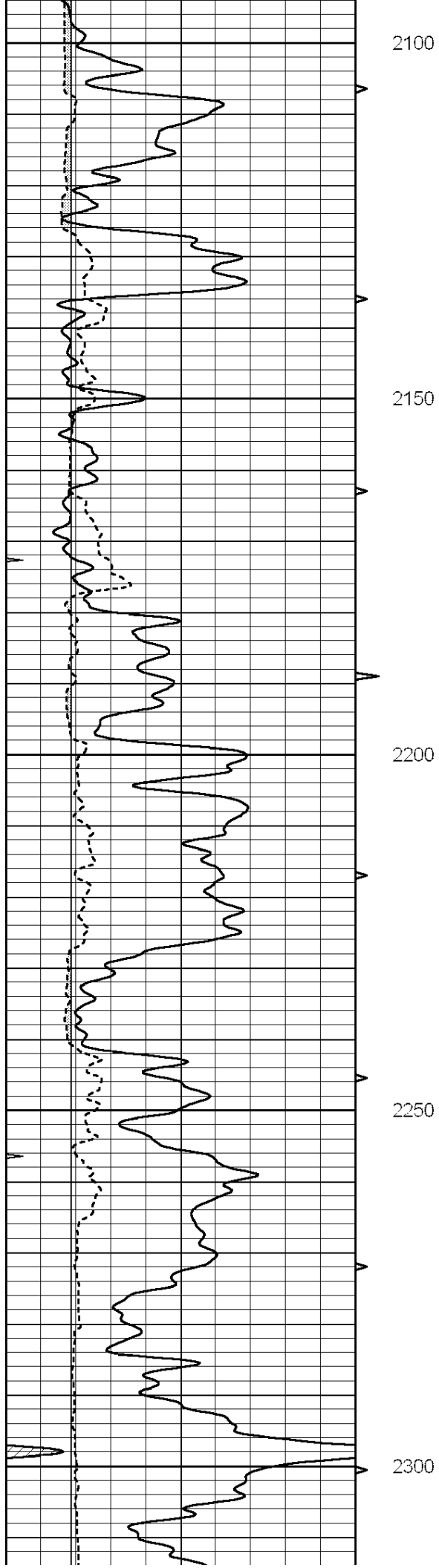
1900

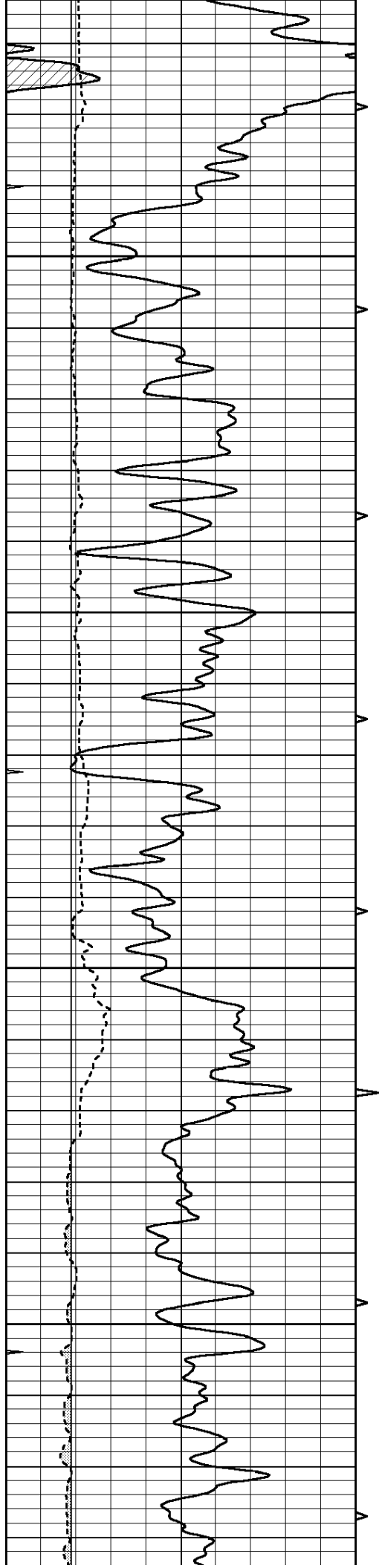
1950

2000

2050





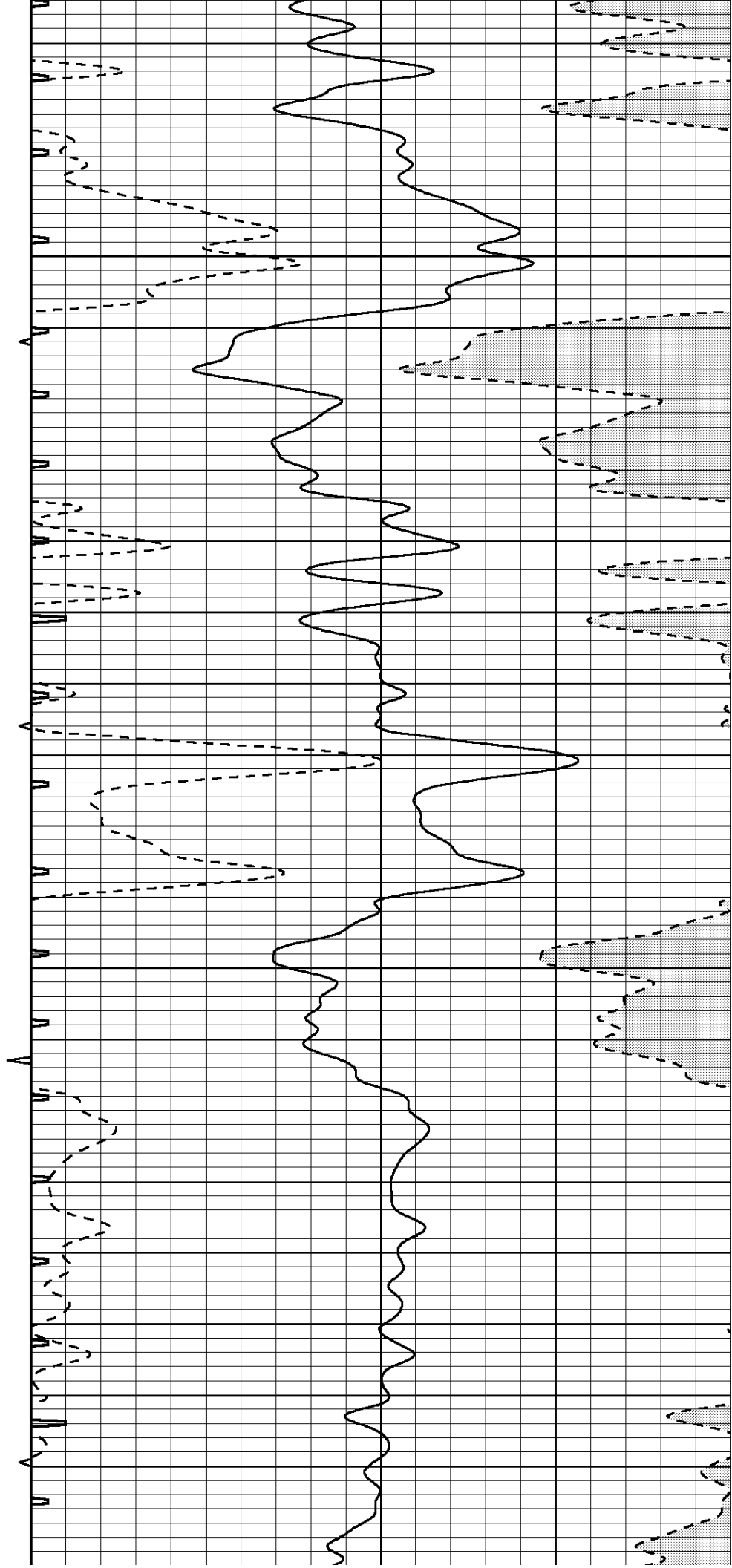


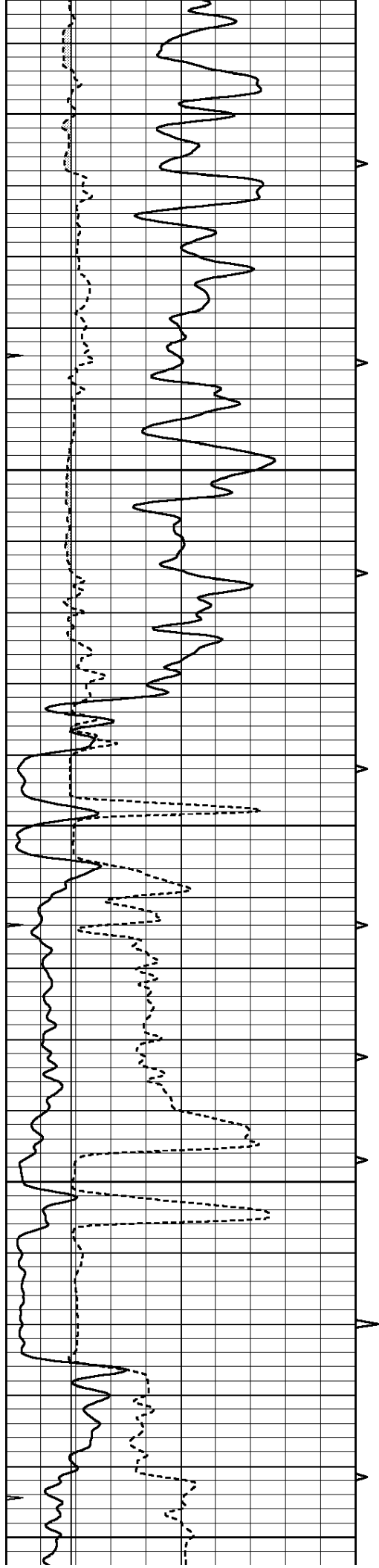
2350

2400

2450

2500





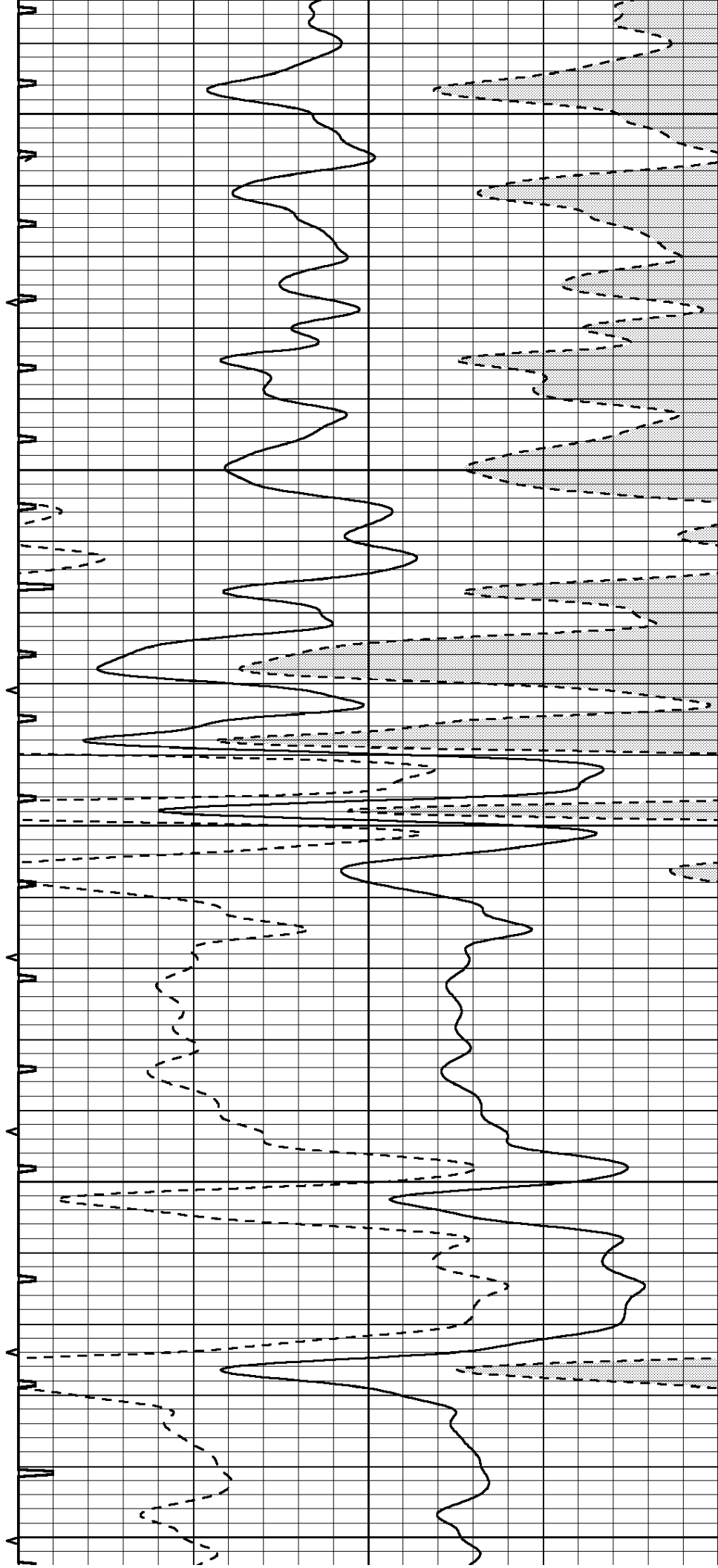
2550

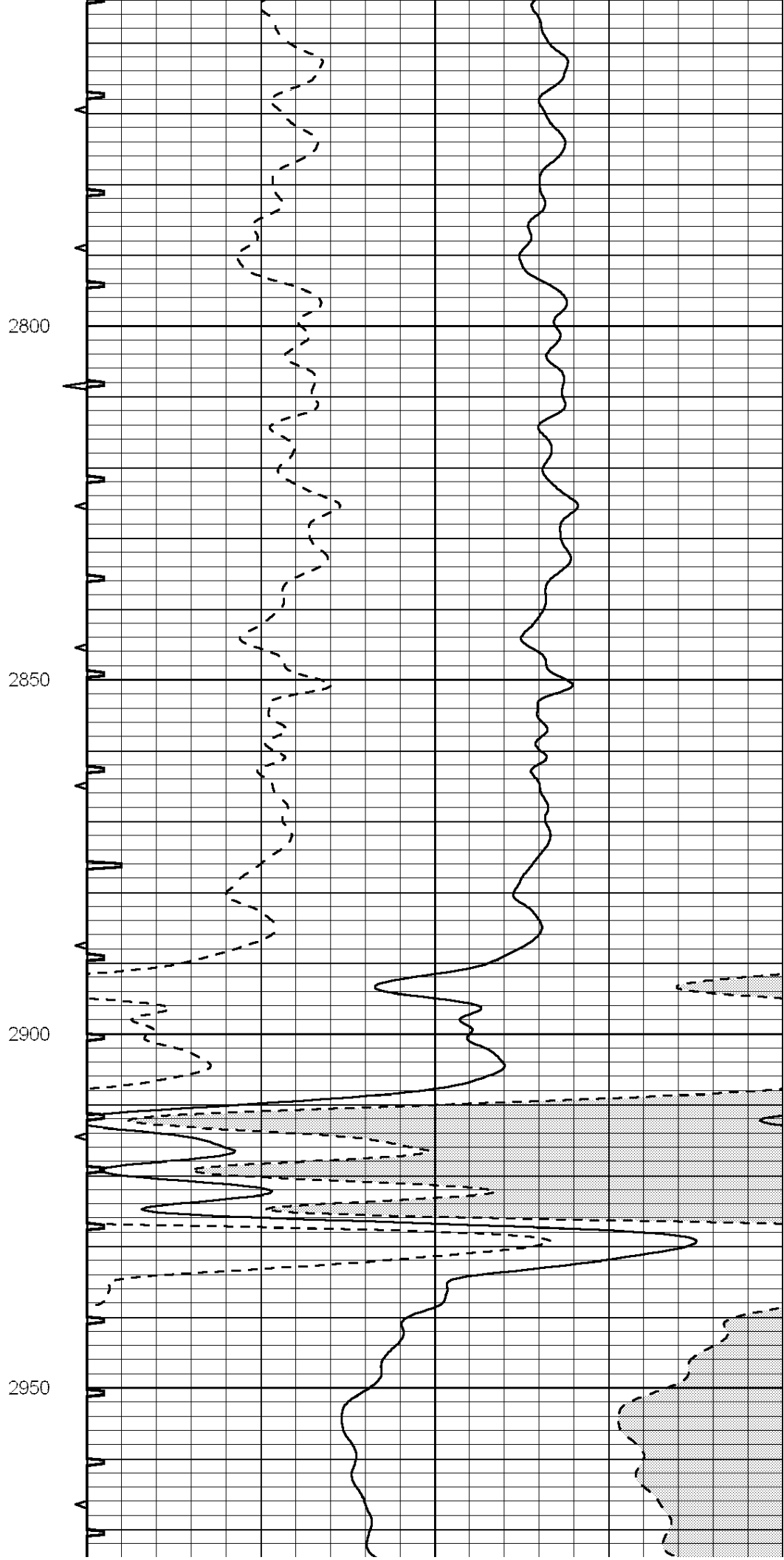
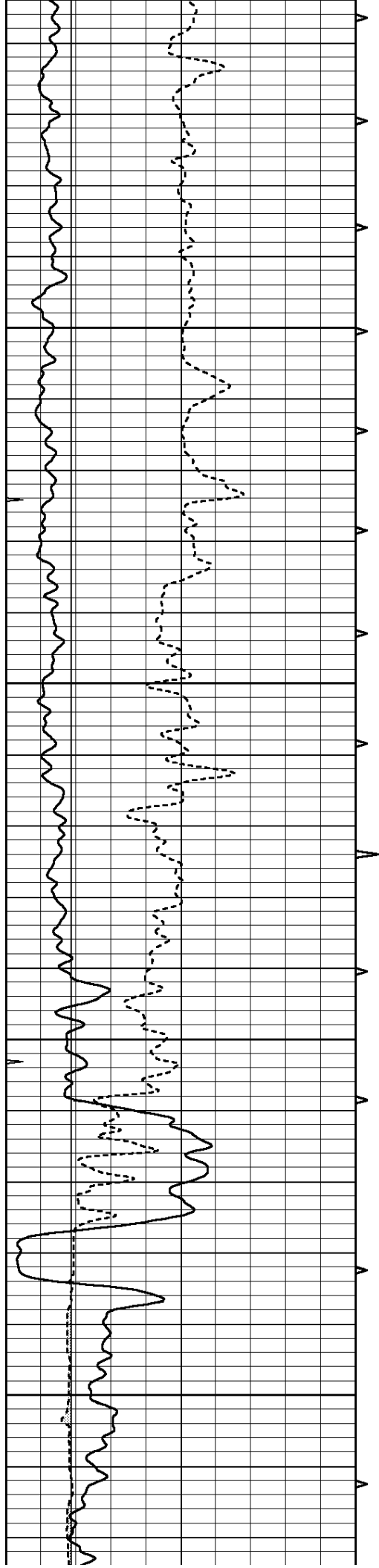
2600

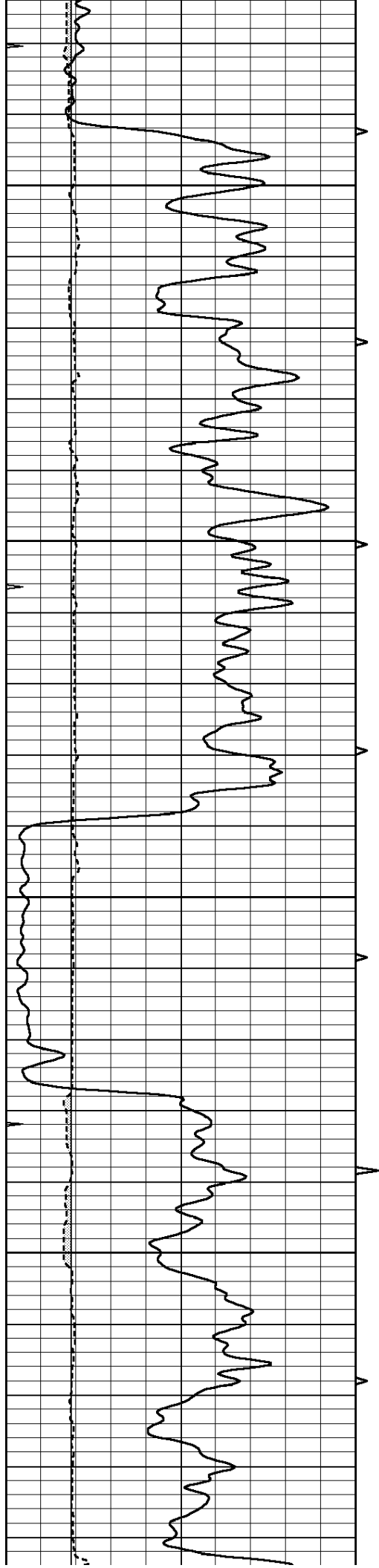
2650

2700

2750





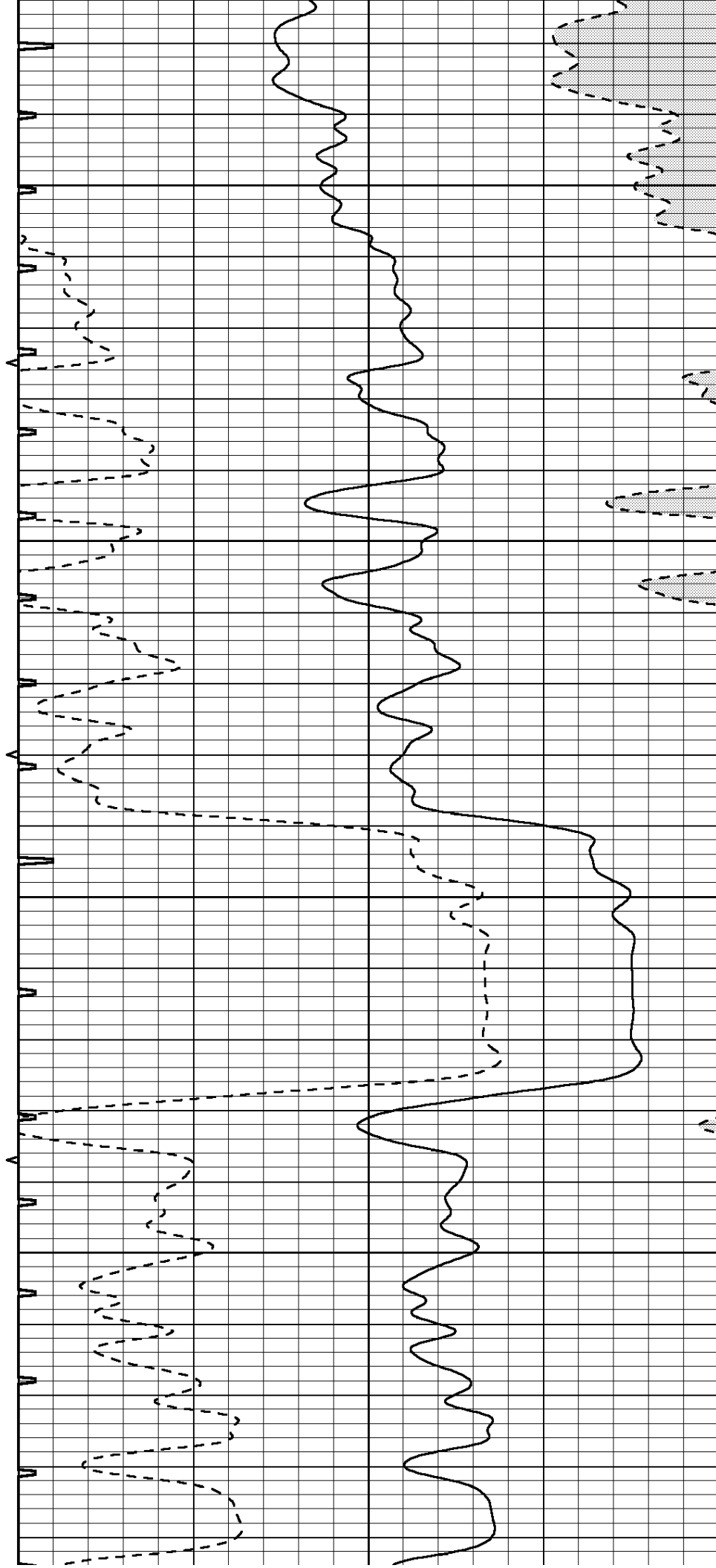


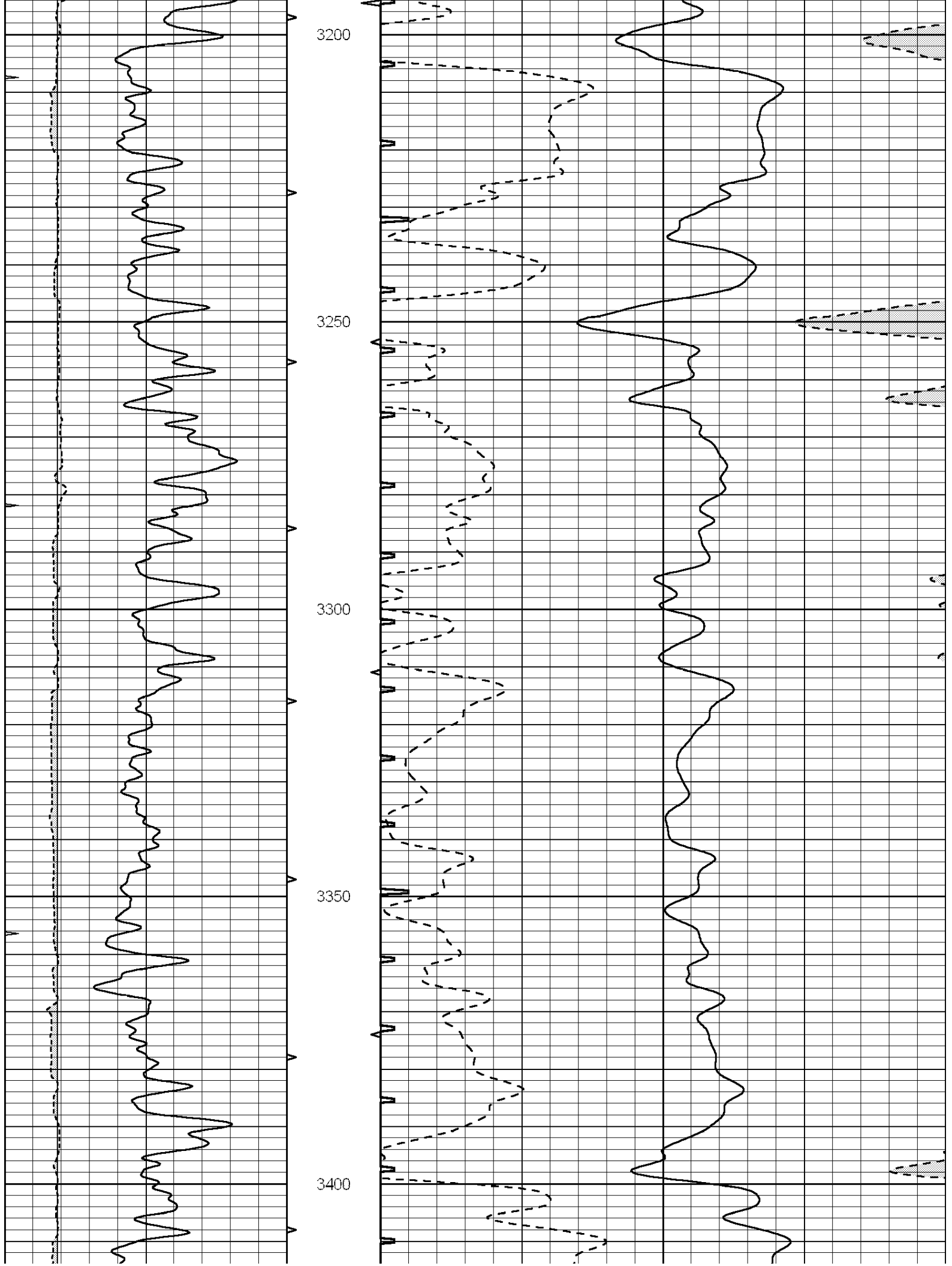
3000

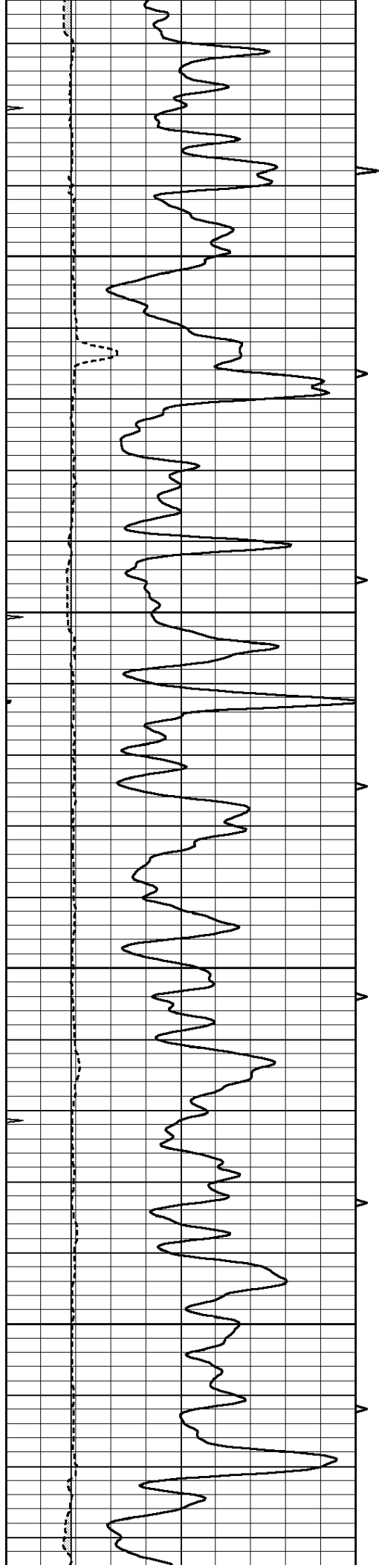
3050

3100

3150





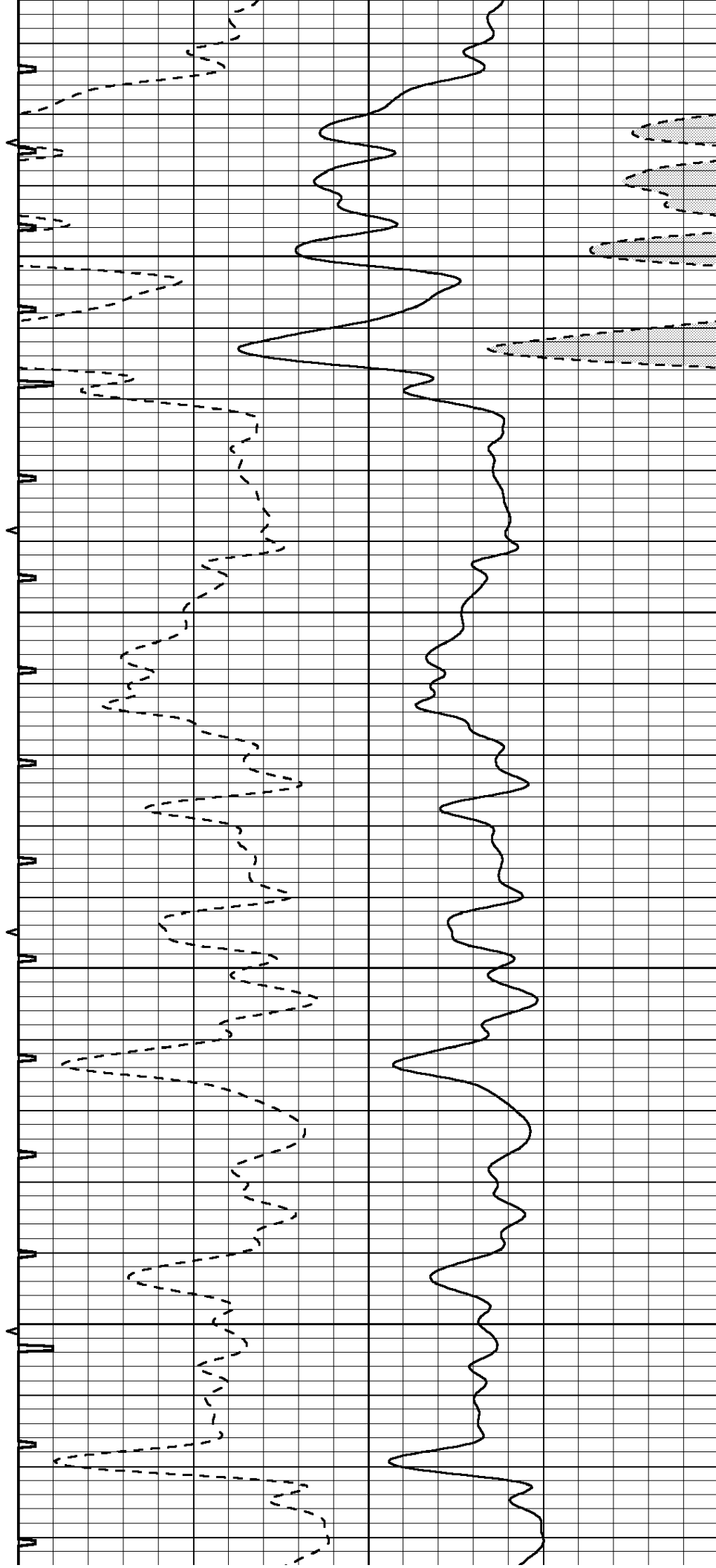


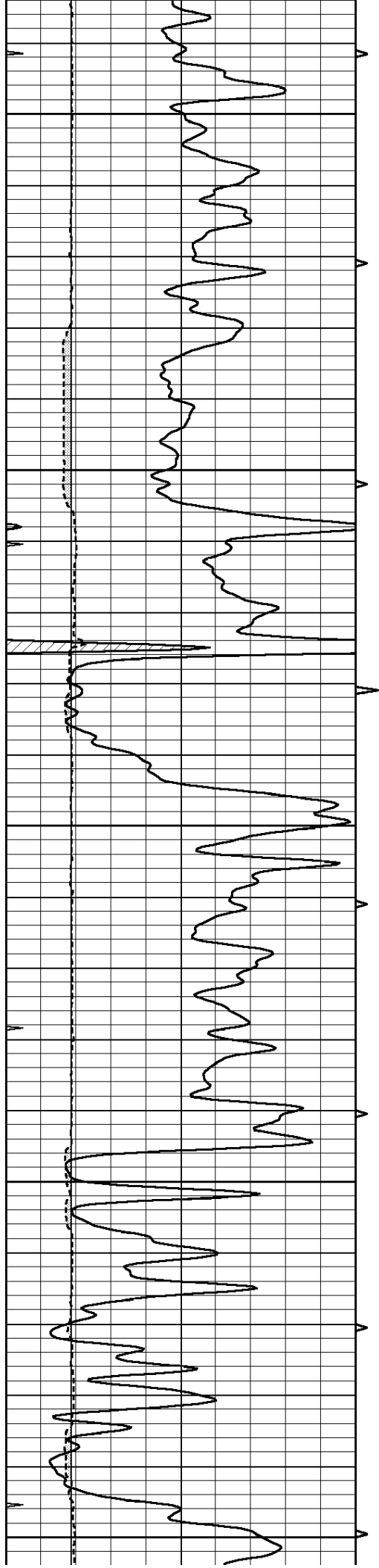
3450

3500

3550

3600





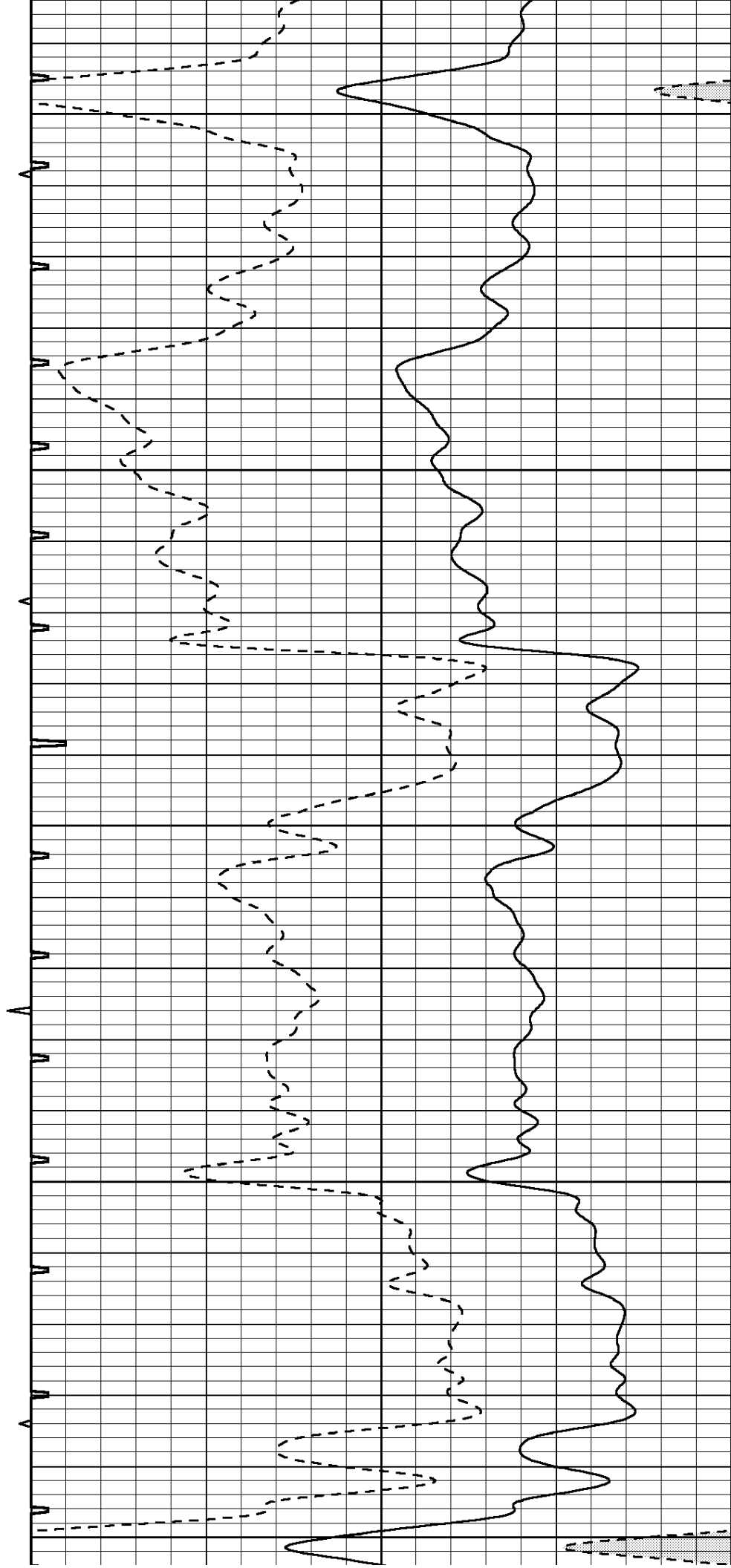
3650

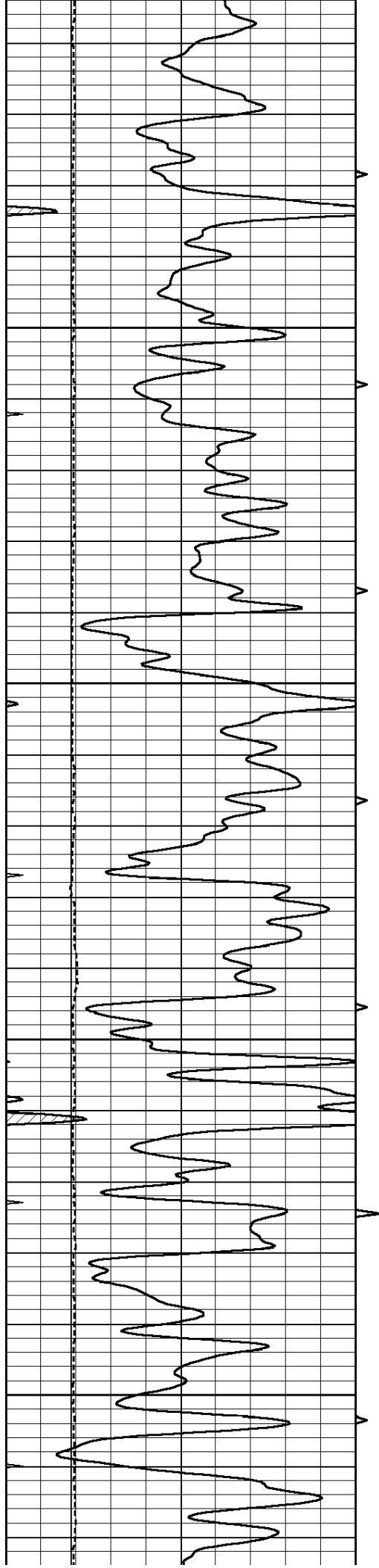
3700

3750

3800

3850



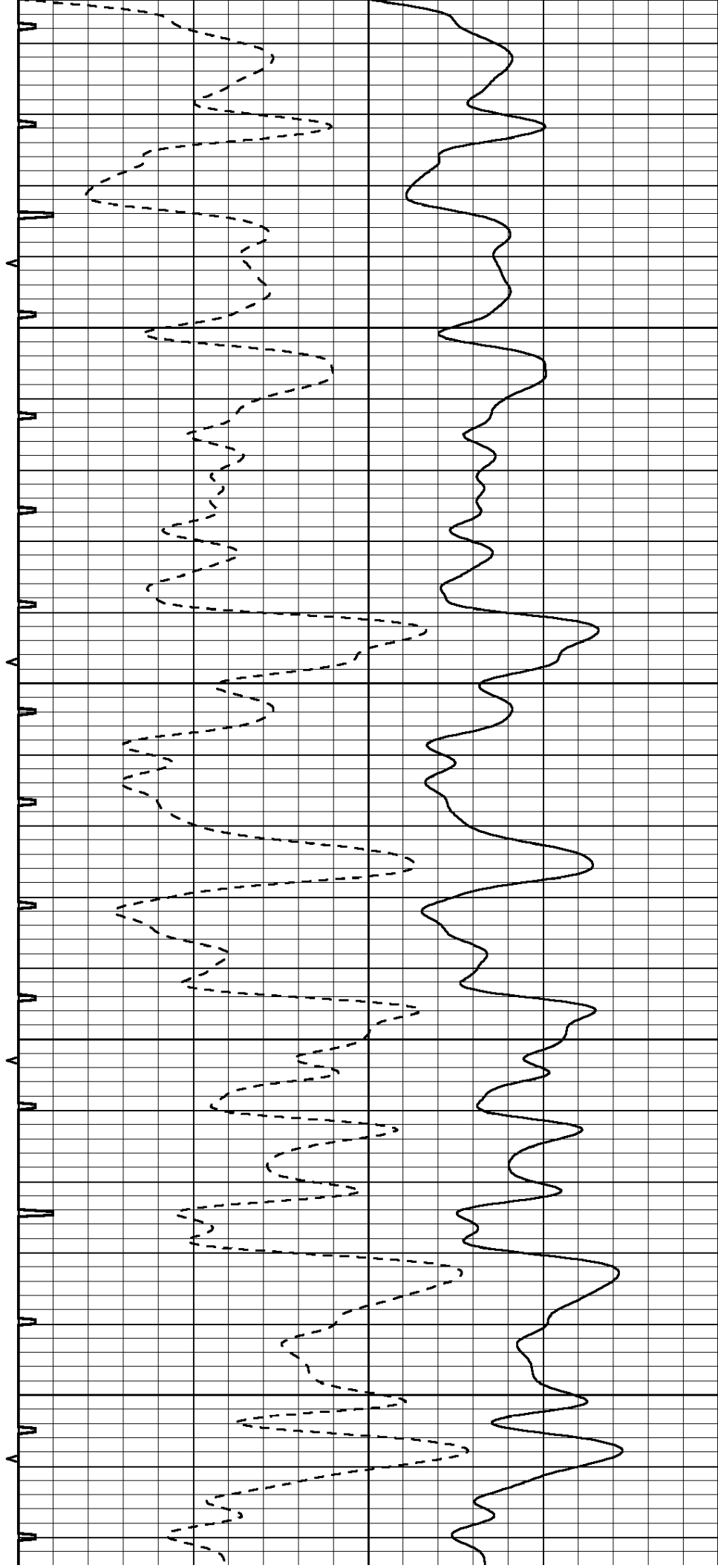


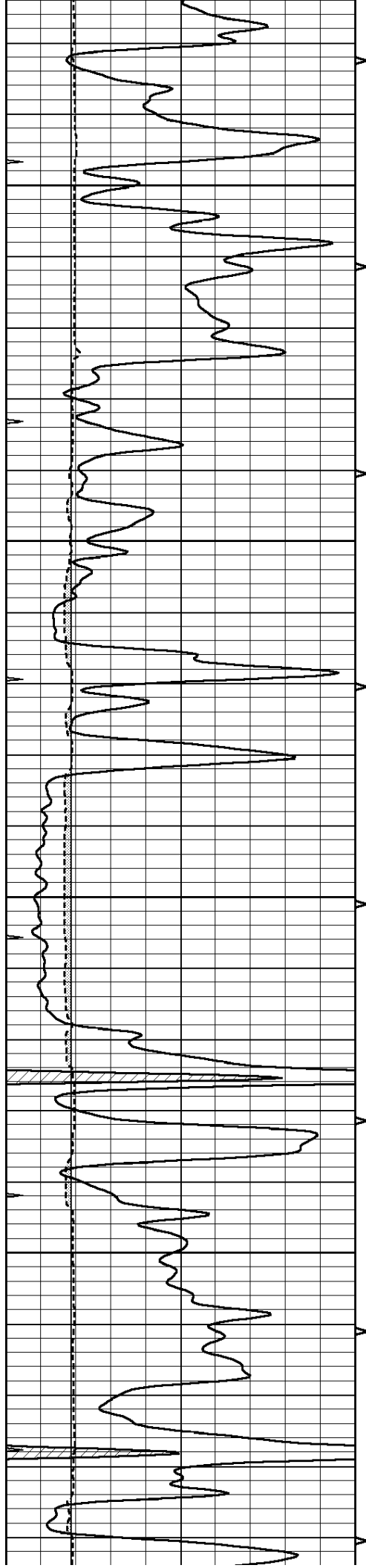
3900

3950

4000

4050



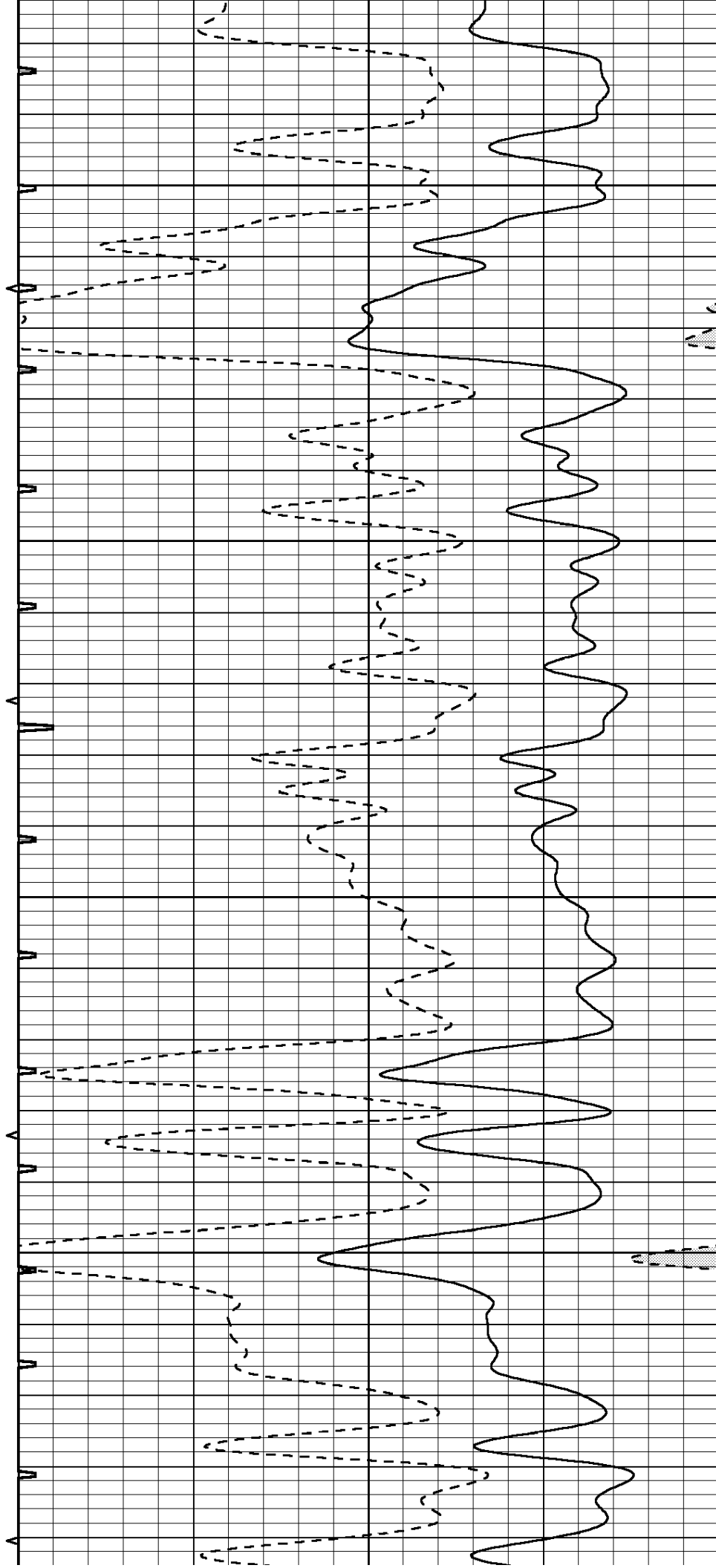


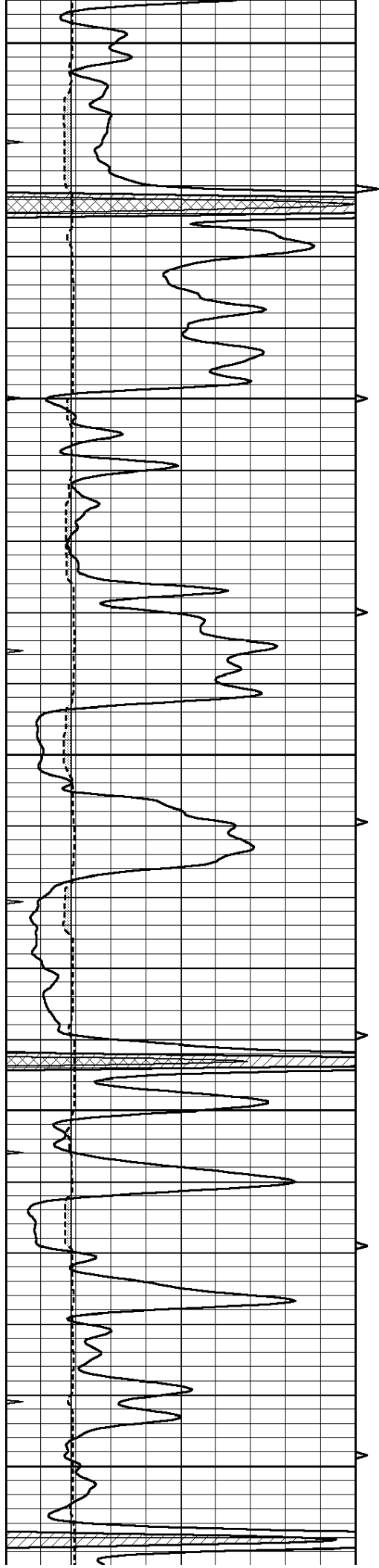
4100

4150

4200

4250





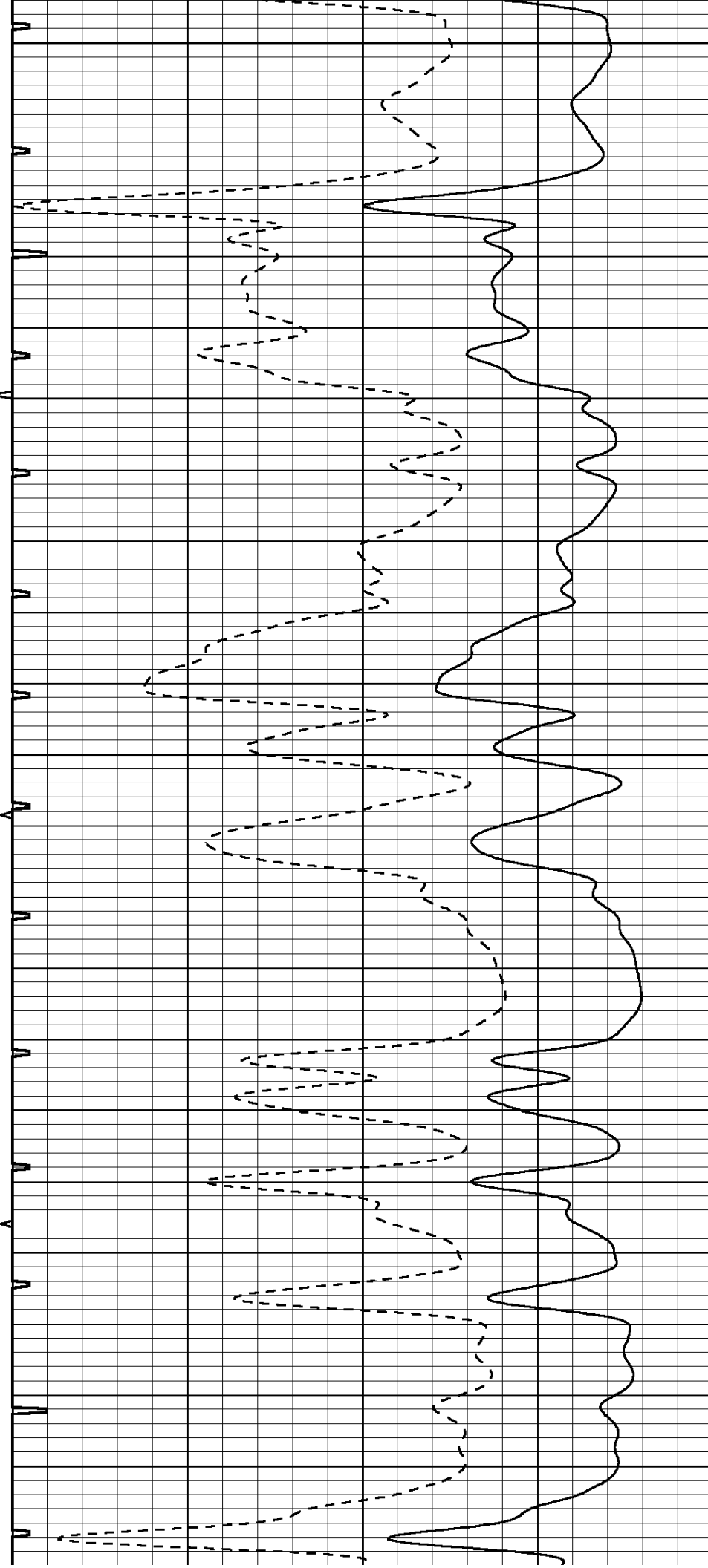
4300

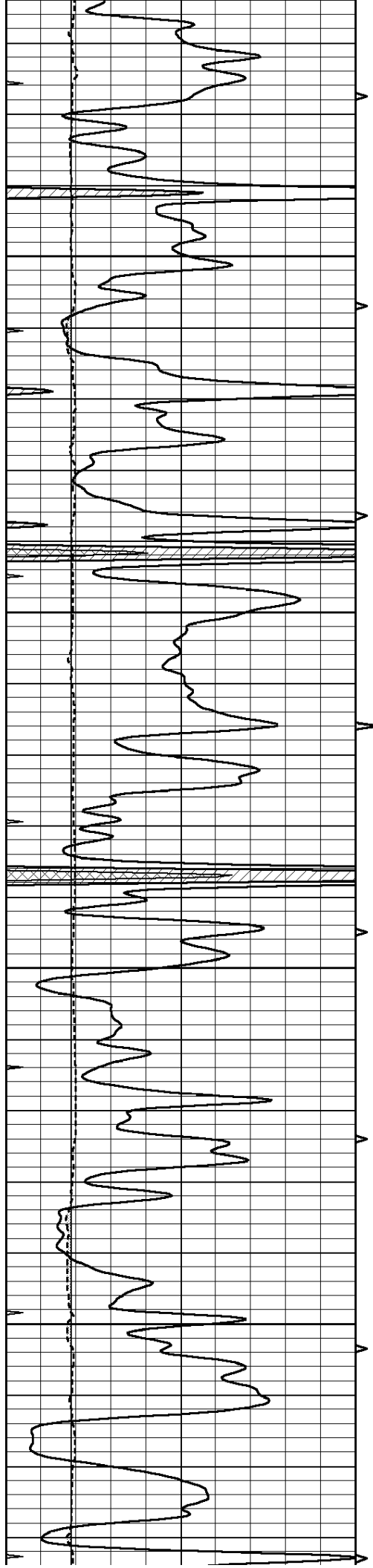
4350

4400

4450

4500



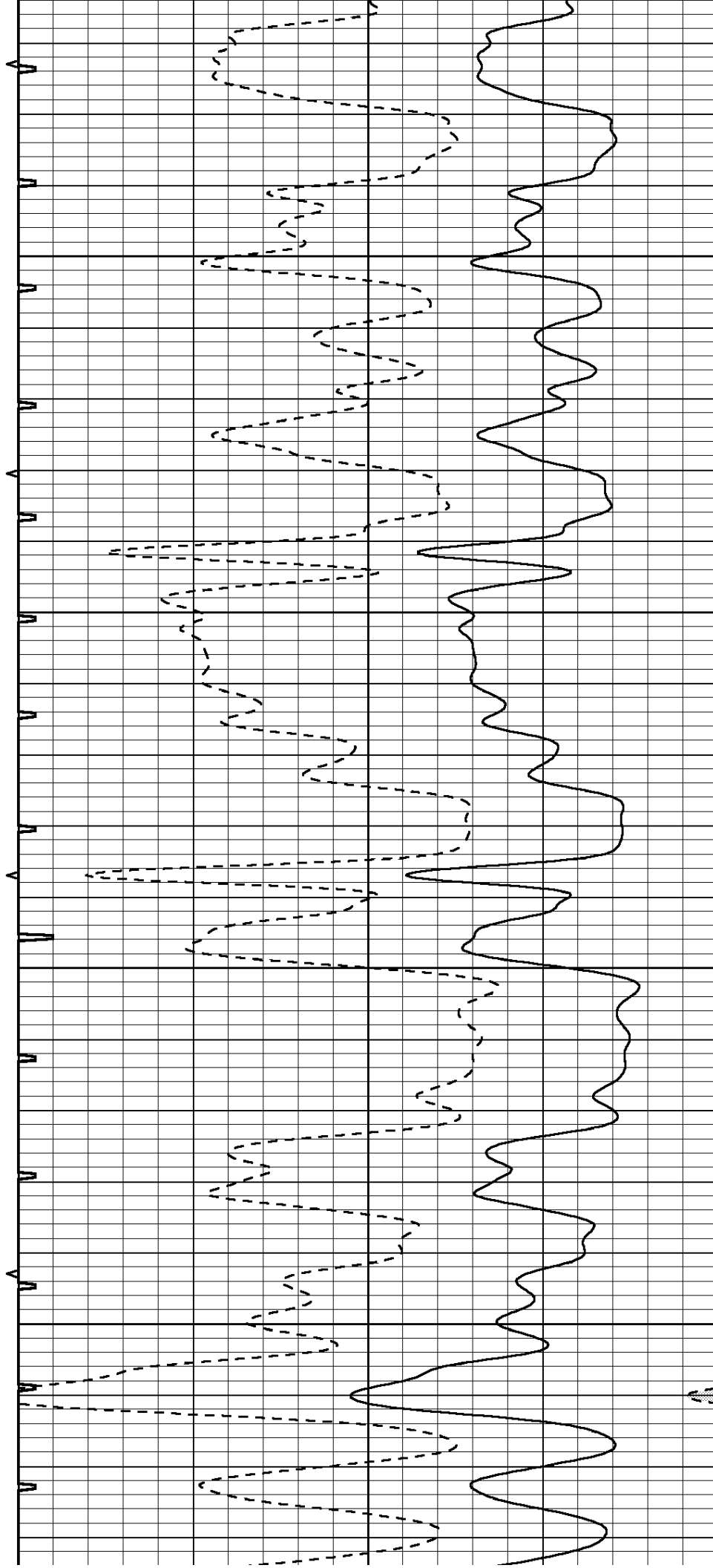


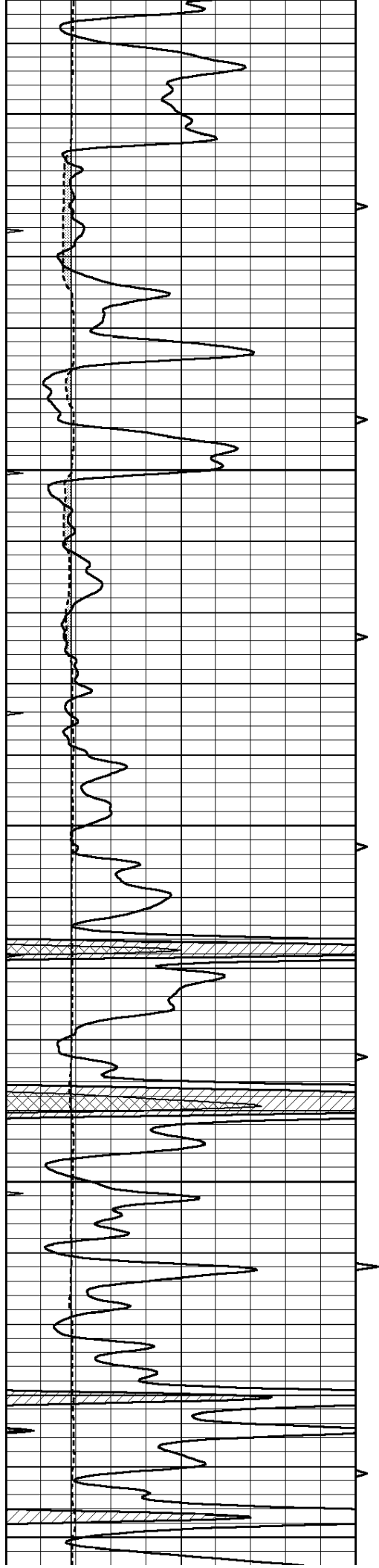
4550

4600

4650

4700





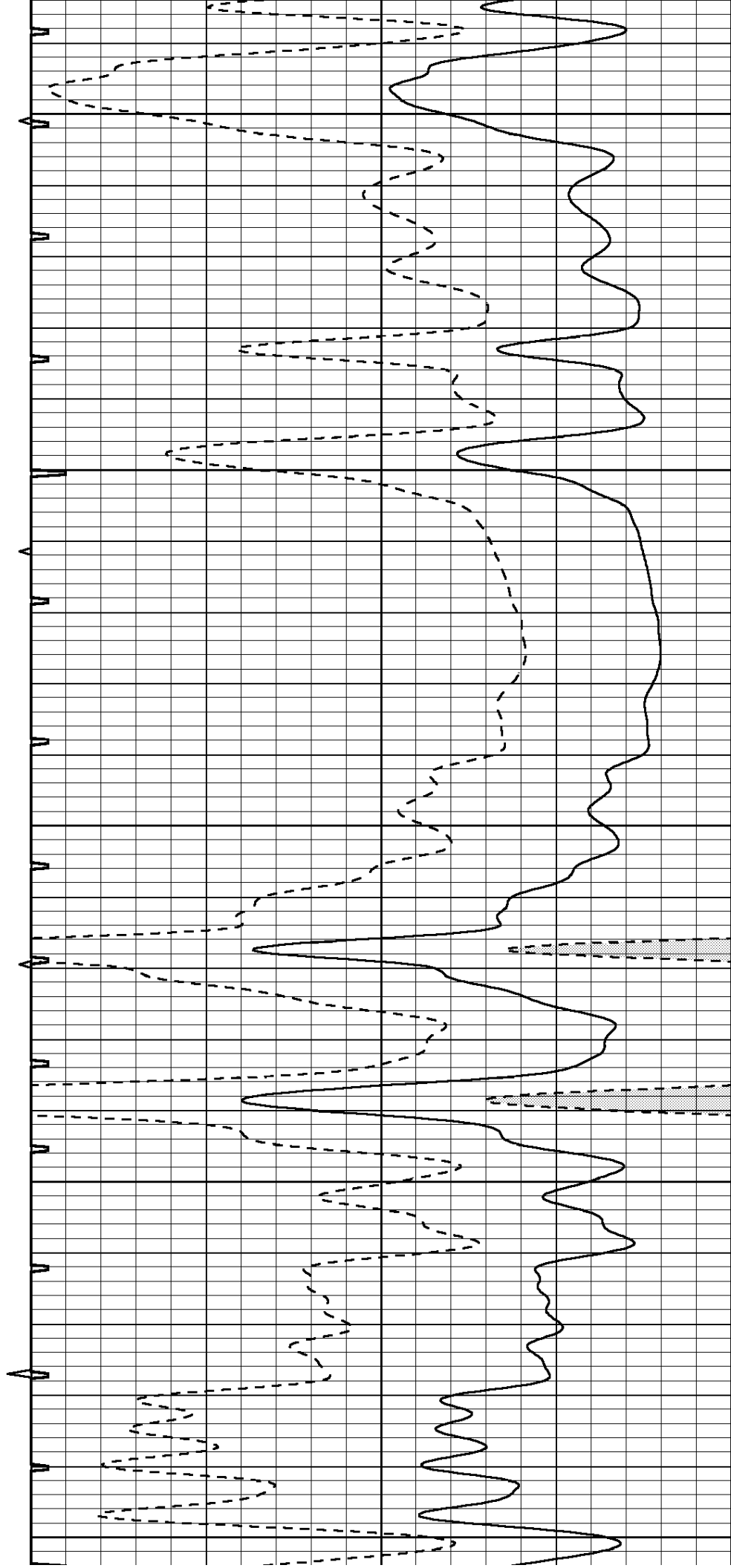
4750

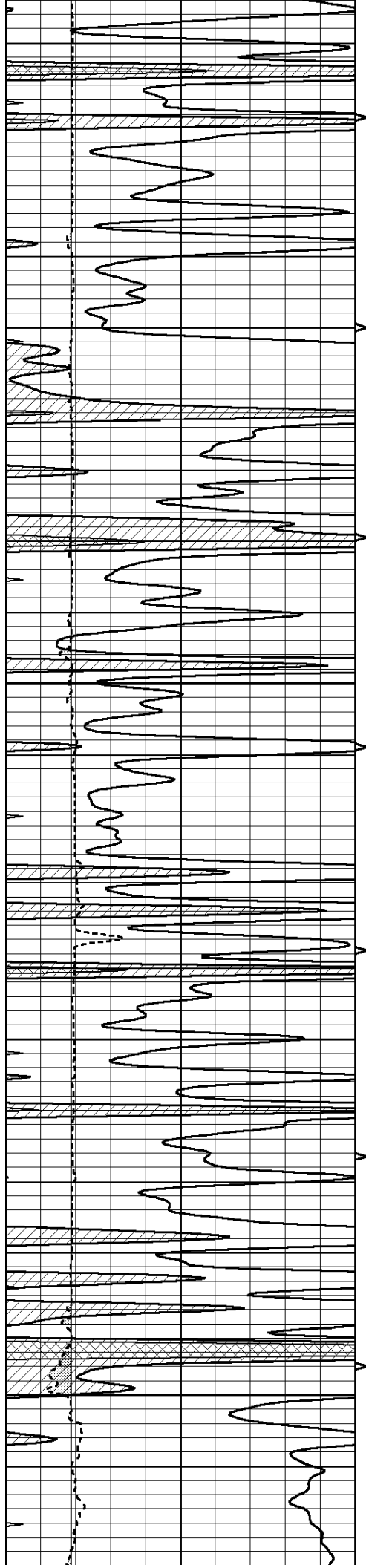
4800

4850

4900

4950



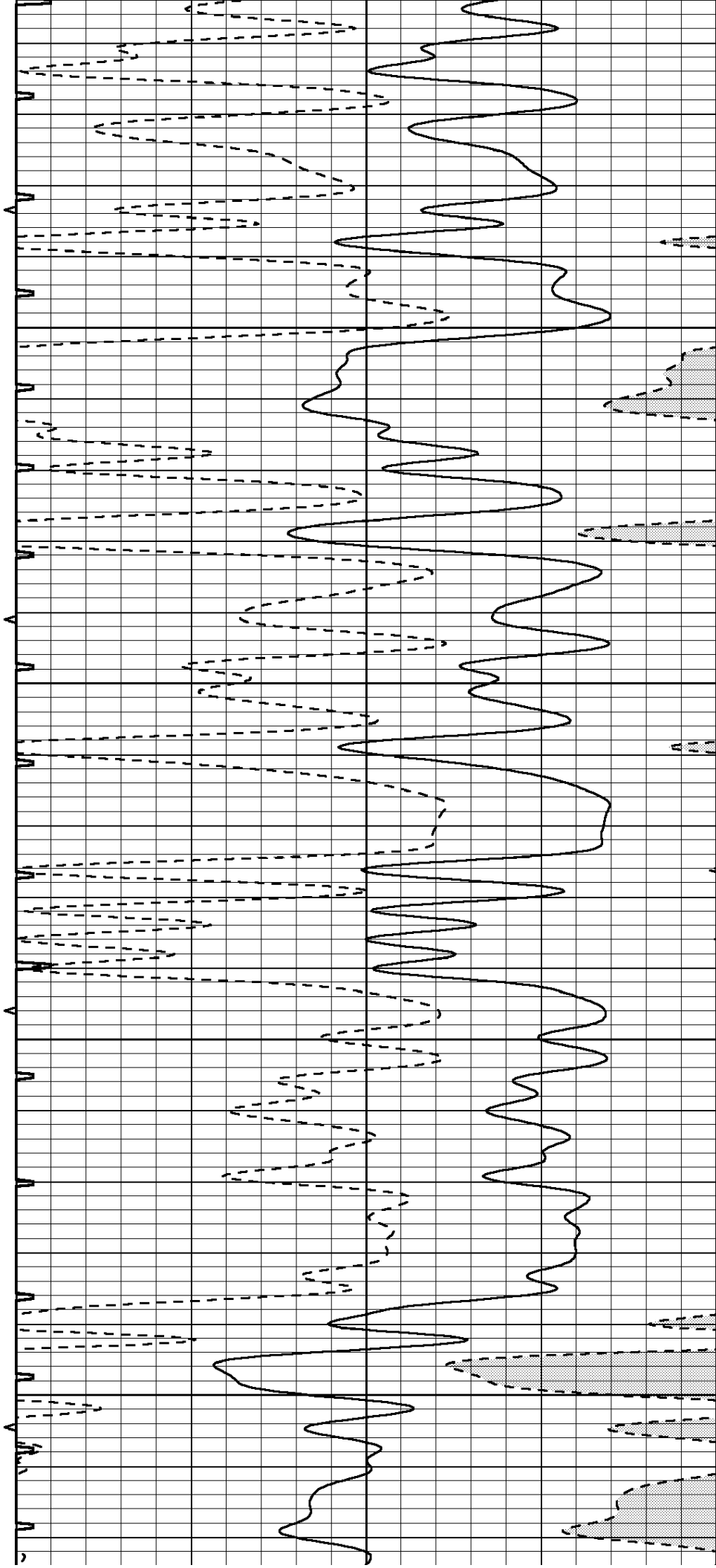


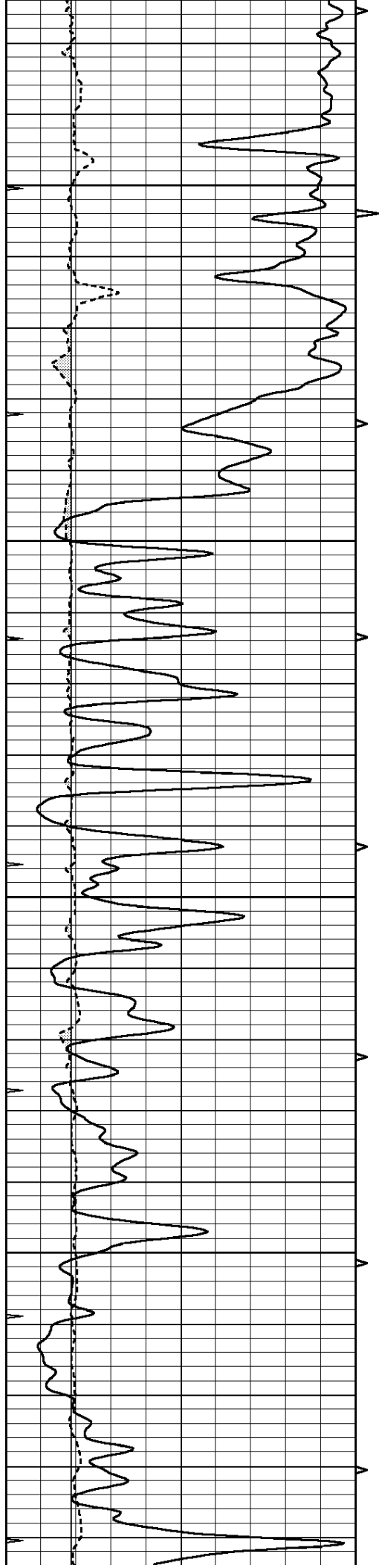
5000

5050

5100

5150



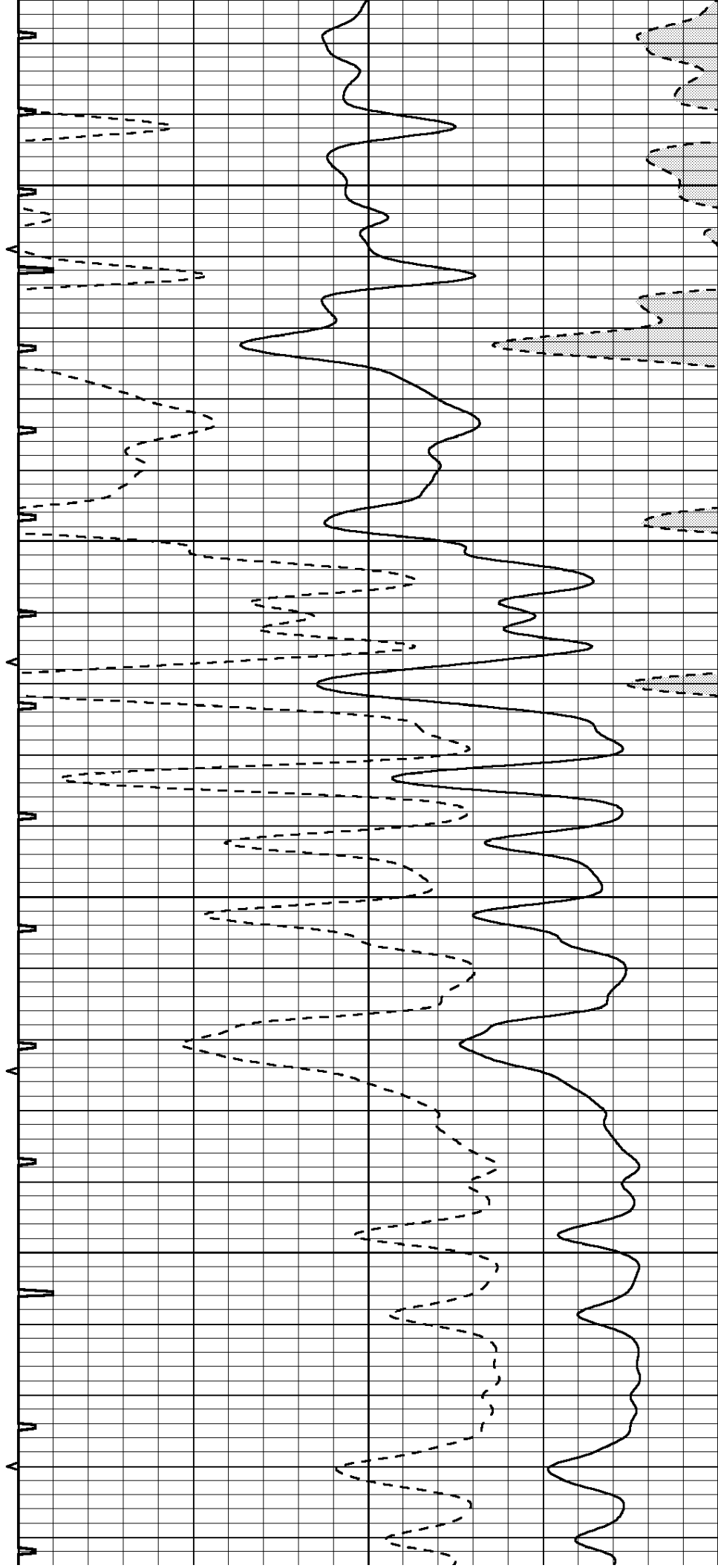


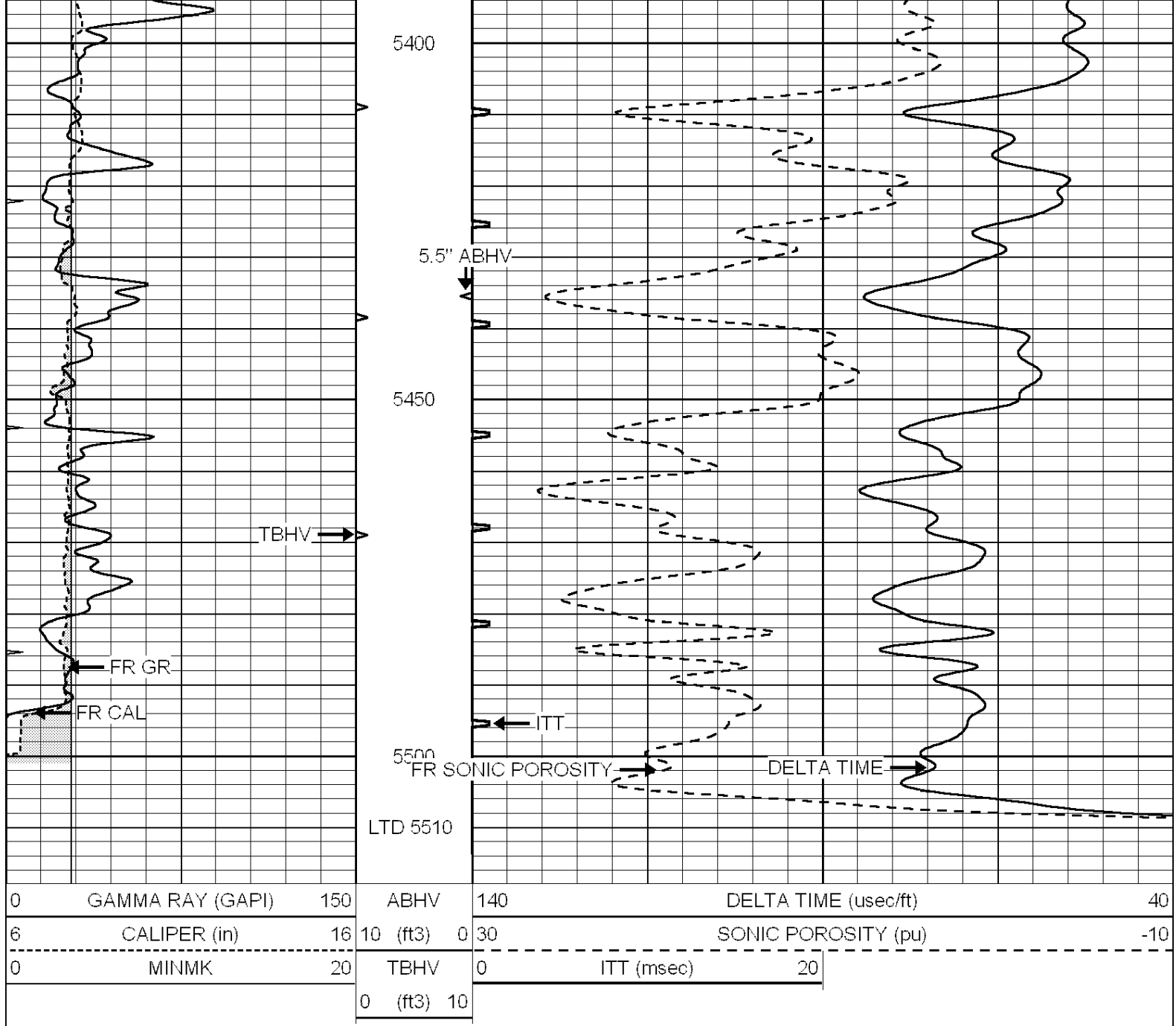
5200

5250

5300

5350

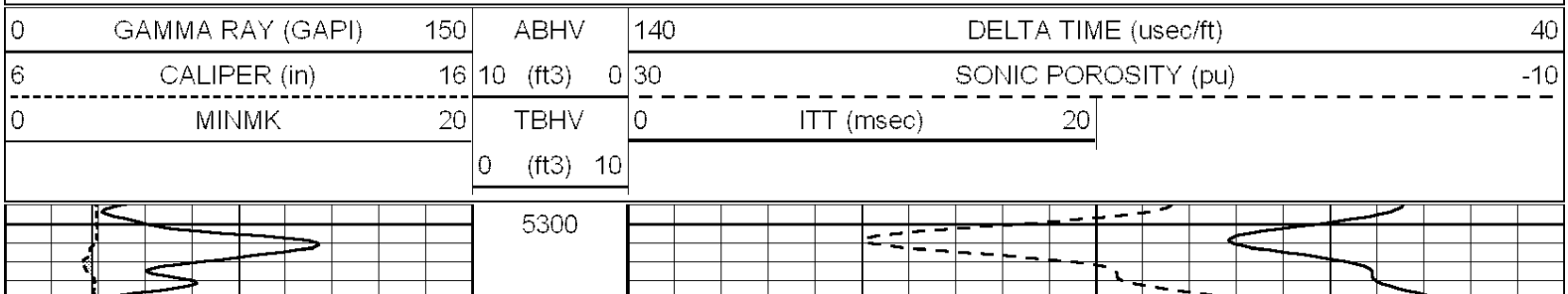


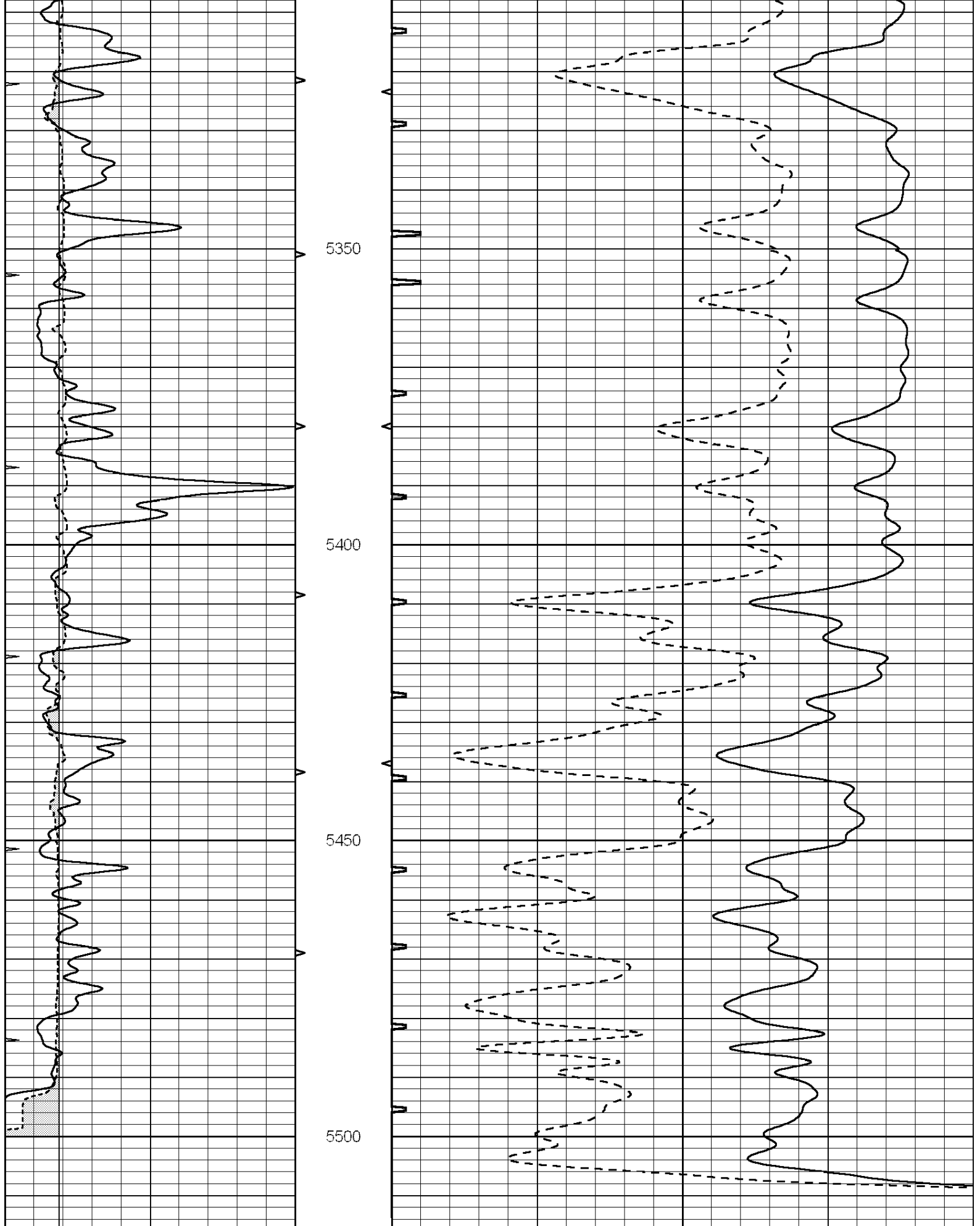


NABORS
**COMPLETION
 & PRODUCTION
 SERVICES CO.**

REPEAT SECTION

Database File: 25880pe.db
 Dataset Pathname: pass7.3
 Presentation Format: slt
 Dataset Creation: Tue Sep 16 04:56:34 2014
 Charted by: Depth in Feet scaled 1:240





0	GAMMA RAY (GAPI)	150	ABHV	140	DELTA TIME (usec/ft)	40
6	CALIPER (in)	16	10 (ft3)	0 30	SONIC POROSITY (pu)	-10
0	MINMK	20	TRHV	0	ITT (msec)	20

0	MIN/MAX	20	PERV	0	TIME (MSEC)	20
		0 (ft3)	10			