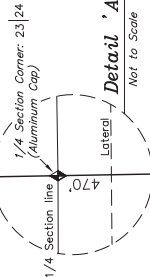
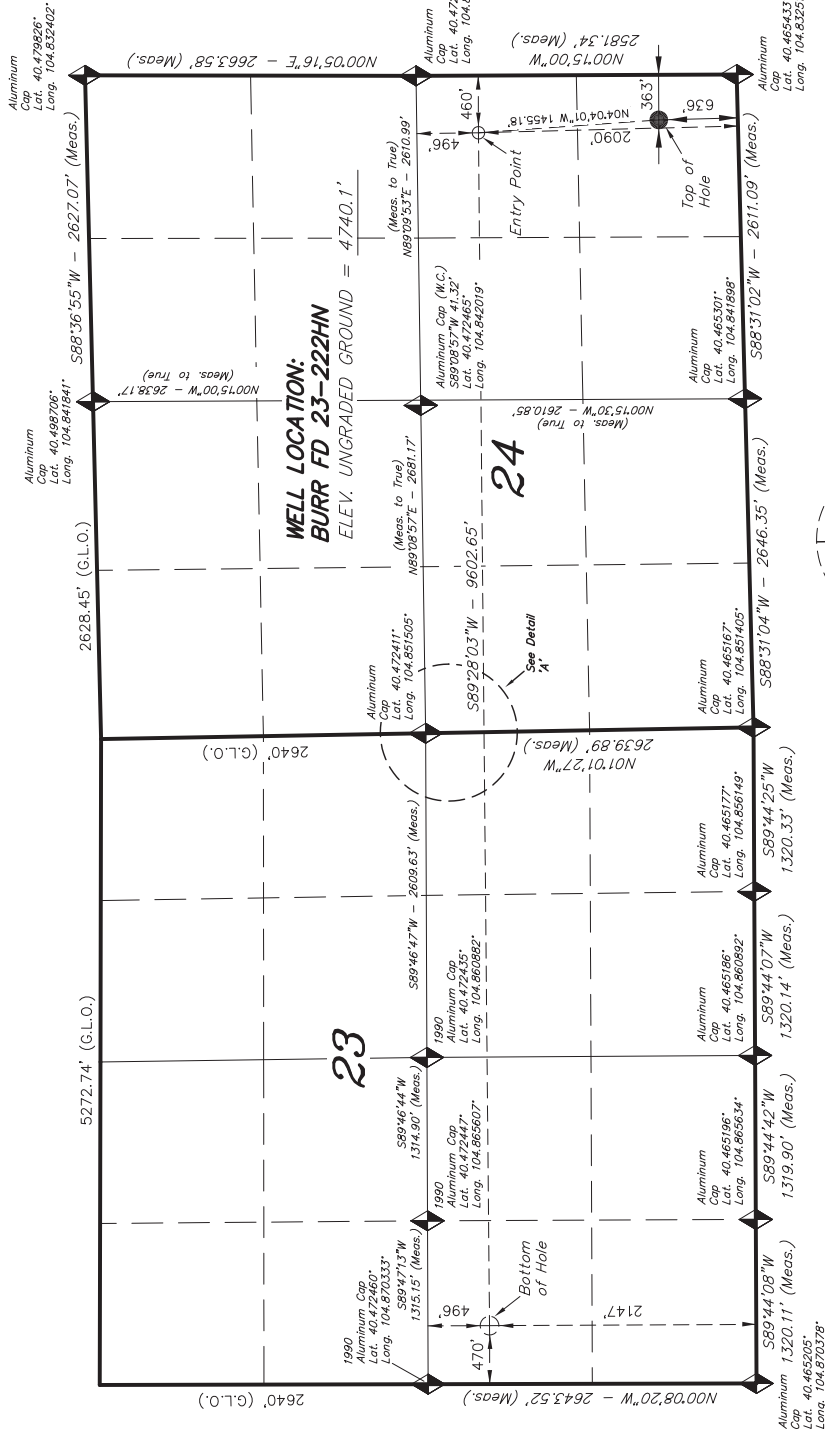


GREAT WESTERN OIL & GAS COMPANY

T6N, R67W, 6th P.M.

WELL LOCATION, BURR FD 23-222HN,
LOCATED AS SHOWN IN THE SE 1/4
SE 1/4 OF SECTION 24, T6N, R67W,
6th P.M. WELD COUNTY, COLORADO.

TARGET BOTTOM HOLE, BURR FD 23-222HN,
LOCATED AS SHOWN IN THE NW 1/4 SW 1/4
OF SECTION 23, T6N, R67W, 6th P.M.
WELD COUNTY, COLORADO.



◆ = SECTION CORNERS LOCATED

BASIS OF ELEV; Elevations are based on an
N.G.S. OPUS Correction. LOCATION: LAT.
40°27'42.74" LONG. 104°51'11.32" (Tristate
Aluminum Cap GW1) NAVD 88 Elev. 4760.86'

NAD 83 (SURFACE LOCATION)	NAD 83 (ENTRY POINT)	NAD 83 (BOTTOM HOLE LOCATION)
LATITUDE = 40°28'01.78" (40.467161°)	LATITUDE = 40°28'16.13" (40.471146°)	LATITUDE = 40°28'15.94" (40.471094°)
LONGITUDE = 104°50'01.74" (104.833815°)	LONGITUDE = 104°50'02.93" (104.834147°)	LONGITUDE = 104°50'07.15" (104.86853°)
NAD 27 (SURFACE LOCATION)	NAD 27 (ENTRY POINT)	NAD 27 (BOTTOM HOLE LOCATION)
LATITUDE = 40°28'01.85" (40.467179°)	LATITUDE = 40°28'16.19" (40.471165°)	LATITUDE = 40°28'16.00" (40.471127°)
LONGITUDE = 104°49'39.34" (104.833283°)	LONGITUDE = 104°50'01.04" (104.833923°)	LONGITUDE = 104°50'08.25" (104.86825°)

- NOTES:
- Well footages are measured at right angles to the Section Lines.
 - Bearings are based on Global Positioning Satellite observations.
 - G.P.S. Operator: C. Stewart, (PDOP) = 1.2

IMPROVEMENT NOTE:
See addendum to legal plat (Sheet 2a & 2b)
for visible improvements within 500' of the
proposed location.

THIS IS TO CERTIFY THAT THE ABOVE PLAT WAS
PREPARED FROM FIELD NOTES OF REALITY SURVEYS
MADE BY ME OR UNDER MY SUPERVISION. THE
LOCATION HAS BEEN STATIONED ON THE PLAT AS
SHOWN ON THE PLAT AND THAT THE PLAT IS A
TRUE AND CORRECT REPRESENTATION OF THE
KNOWLEDGE AND BELIEF OF ME AT THE TIME
OF THE SURVEY.

REGISTERED LAND SURVEYOR
STATE OF COLORADO
REGISTRATION NO. 20125
30125

TRI STATE LAND SURVEYING & CONSULTING
180 NORTH VERNAL AVE. - VERNAL, UTAH 84078
(435) 781-2501

DATE SURVEYED:	SURVEYED BY: C.S.	SHEET
07-08-14		1b
DATE DRAWN:	DRAWN BY: R.V.C.	
07-13-14		
REVISED:	SCALE: 1" = 1000'	
08-21-14 M.W.		