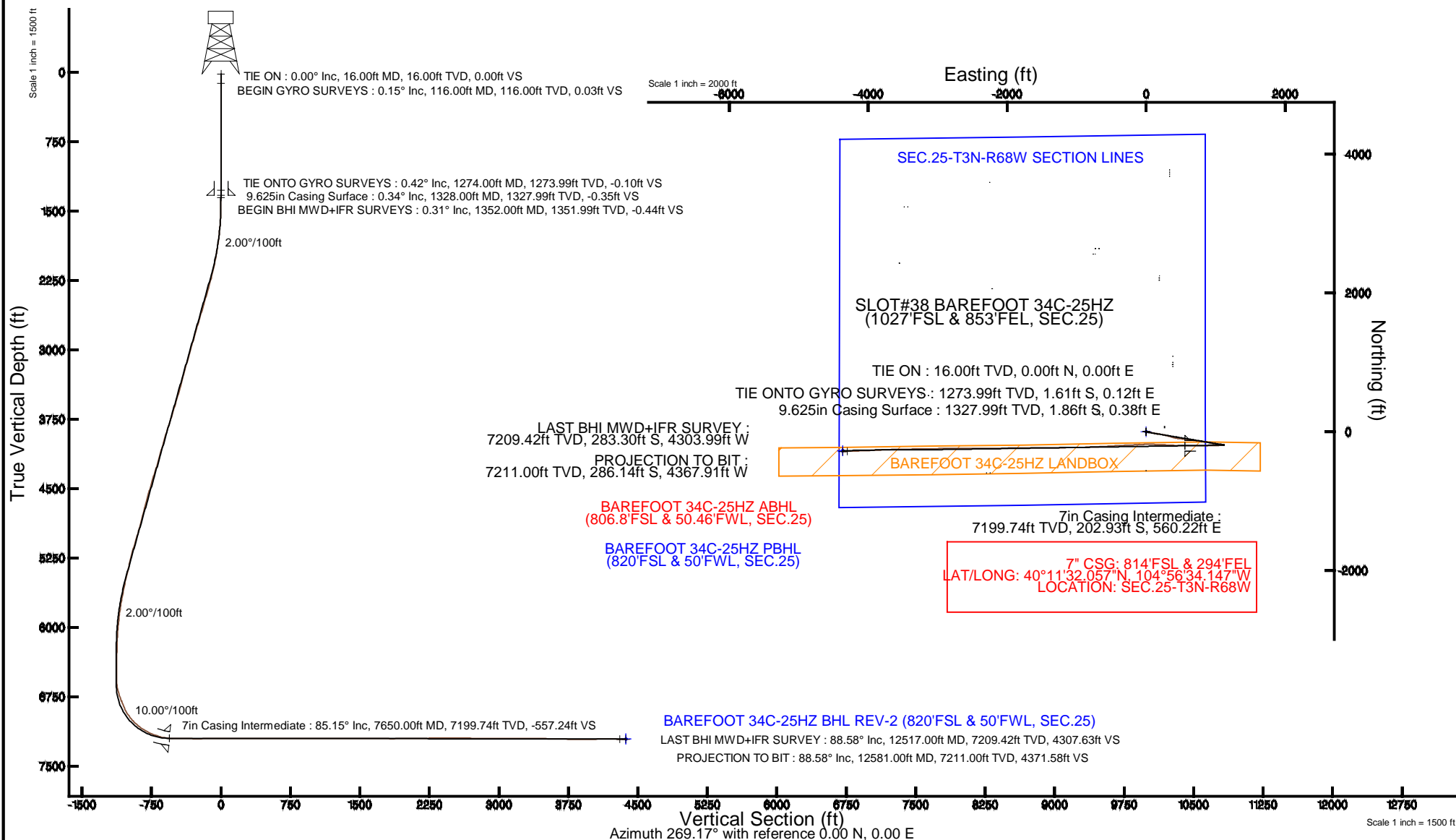


KERR-MCGEE OIL & GAS ONSHORE LP

Location: COLORADO Slot: SLOT#38 BAREFOOT 34C-25HZ (1027'FSL & 853'FEL, SEC.25)
 Field: WELD COUNTY (KERR MCGEE) Well: BAREFOOT 34C-25HZ
 Facility: SEC.25-T3N-R68W Wellbore: BAREFOOT 34C-25HZ PWB

Plot reference wellpath is BAREFOOT 34C-25HZ (REV-C.0) PWP

True vertical depths are referenced to XTREME 24 (16KB) (RKB)	Grid System: NAD83 / Lambert Colorado SP, Northern Zone (501), US feet
Measured depths are referenced to XTREME 24 (16KB) (RKB)	North Reference: True north
XTREME 24 (16KB) (RKB) to Mean Sea Level: 4880 feet	Scale: True distance
Mean Sea Level to Mud line (At Slot: SLOT#38 BAREFOOT 34C-25HZ (1027'FSL & 853'FEL, SEC.25)): 0 feet	Depths are in feet
Coordinates are in feet referenced to Slot	Created by: robiale01 on 9/11/2014



REFERENCE WELLPATH IDENTIFICATION			
Operator	KERR-MCGEE OIL & GAS ONSHORE LP	Slot	SLOT#38 BAREFOOT 34C-25HZ (1027'FSL & 853'FEL, SEC.25)
Area	COLORADO	Well	BAREFOOT 34C-25HZ
Field	WELD COUNTY (KERR MCGEE)	Wellbore	BAREFOOT 34C-25HZ AWB
Facility	SEC.25-T3N-R68W		

REPORT SETUP INFORMATION			
Projection System	NAD83 / Lambert Colorado SP, Northern Zone (501), US feet	Software System	WellArchitect® 4.0.0
North Reference	True	User	Robiale01
Scale	0.999957	Report Generated	9/11/2014 at 1:53:50 PM
Convergence at slot	n/a	Database/Source file	WellArchitectDB/BAREFOOT_34C-25HZ_AWB.xml

WELLPATH LOCATION						
	Local coordinates		Grid coordinates		Geographic coordinates	
	North[ft]	East[ft]	Easting[US ft]	Northing[US ft]	Latitude	Longitude
Slot Location	-2653.91	677.80	3155093.87	1313563.31	40°11'34.062"N	104°56'41.366"W
Facility Reference Pt			3154399.57	1316212.82	40°12'00.288"N	104°56'50.100"W
Field Reference Pt			3197771.84	1268891.29	40°04'09.600"N	104°47'36.000"W

WELLPATH DATUM			
Calculation method	Minimum curvature	XTREME 24 (16'KB) (RKB) to Facility Vertical Datum	4880.00ft
Horizontal Reference Pt	Slot	XTREME 24 (16'KB) (RKB) to Mean Sea Level	4880.00ft
Vertical Reference Pt	XTREME 24 (16'KB) (RKB)	XTREME 24 (16'KB) (RKB) to Mud Line at Slot (SLOT#38 BAREFOOT 34C-25HZ (1027'FSL & 853'FEL, SEC.25))	4880.00ft
MD Reference Pt	XTREME 24 (16'KB) (RKB)	Section Origin	N 0.00, E 0.00 ft
Field Vertical Reference	Mean Sea Level	Section Azimuth	266.25°

REFERENCE WELLPATH IDENTIFICATION			
Operator	KERR-MCGEE OIL & GAS ONSHORE LP	Slot	SLOT#38 BAREFOOT 34C-25HZ (1027'FSL & 853'FEL, SEC.25)
Area	COLORADO	Well	BAREFOOT 34C-25HZ
Field	WELD COUNTY (KERR MCGEE)	Wellbore	BAREFOOT 34C-25HZ AWB
Facility	SEC.25-T3N-R68W		

WELLPATH DATA (147 stations) † = interpolated/extrapolated station										
MD [ft]	Inclination [°]	Azimuth [°]	TVD [ft]	Vert Sect [ft]	North [ft]	East [ft]	Latitude	Longitude	DLS [°/100ft]	Comments
0.00†	0.000	347.460	0.00	0.00	0.00	0.00	40°11'34.062"N	104°56'41.366"W	0.00	
16.00	0.000	347.460	16.00	0.00	0.00	0.00	40°11'34.062"N	104°56'41.366"W	0.00	TIE ON
116.00	0.150	347.460	116.00	0.02	0.13	-0.03	40°11'34.063"N	104°56'41.366"W	0.15	BEGIN GYRO SURVEYS
216.00	0.030	20.440	216.00	0.03	0.28	-0.05	40°11'34.065"N	104°56'41.367"W	0.13	
316.00	0.180	329.110	316.00	0.09	0.44	-0.12	40°11'34.066"N	104°56'41.368"W	0.16	
416.00	0.070	277.570	416.00	0.22	0.58	-0.26	40°11'34.068"N	104°56'41.369"W	0.15	
516.00	0.140	298.430	516.00	0.39	0.65	-0.43	40°11'34.068"N	104°56'41.372"W	0.08	
616.00	0.130	235.530	616.00	0.59	0.64	-0.63	40°11'34.068"N	104°56'41.374"W	0.14	
716.00	0.110	193.560	716.00	0.71	0.48	-0.75	40°11'34.067"N	104°56'41.376"W	0.09	
816.00	0.160	209.160	816.00	0.82	0.27	-0.84	40°11'34.065"N	104°56'41.377"W	0.06	
916.00	0.240	180.370	916.00	0.91	-0.06	-0.91	40°11'34.061"N	104°56'41.378"W	0.13	
1016.00	0.330	145.760	1016.00	0.78	-0.51	-0.74	40°11'34.057"N	104°56'41.376"W	0.19	
1116.00	0.270	150.360	1116.00	0.53	-0.95	-0.47	40°11'34.053"N	104°56'41.372"W	0.06	
1216.00	0.320	135.330	1215.99	0.24	-1.36	-0.15	40°11'34.049"N	104°56'41.368"W	0.09	
1274.00	0.420	131.100	1273.99	-0.02	-1.61	0.12	40°11'34.046"N	104°56'41.364"W	0.18	TIE ONTO GYRO SURVEYS
1352.00	0.310	142.000	1351.99	-0.34	-1.96	0.47	40°11'34.043"N	104°56'41.360"W	0.17	BEGIN BHI MWD+IFR SURVEYS
1405.00	0.250	140.420	1404.99	-0.49	-2.17	0.63	40°11'34.041"N	104°56'41.358"W	0.11	
1499.00	1.340	78.010	1498.98	-1.69	-2.10	1.83	40°11'34.041"N	104°56'41.342"W	1.32	
1593.00	3.290	90.330	1592.90	-5.47	-1.88	5.61	40°11'34.043"N	104°56'41.294"W	2.13	
1688.00	5.410	90.240	1687.62	-12.66	-1.92	12.81	40°11'34.043"N	104°56'41.201"W	2.23	
1782.00	7.100	93.410	1781.06	-22.84	-2.28	23.04	40°11'34.039"N	104°56'41.069"W	1.83	
1876.00	8.650	101.880	1874.17	-35.42	-4.08	35.76	40°11'34.022"N	104°56'40.905"W	2.06	
1970.00	10.070	105.990	1966.92	-49.96	-7.80	50.58	40°11'33.985"N	104°56'40.714"W	1.67	
2065.00	11.480	102.920	2060.24	-66.84	-12.20	67.78	40°11'33.941"N	104°56'40.493"W	1.60	
2157.00	13.260	103.050	2150.10	-85.71	-16.63	86.98	40°11'33.898"N	104°56'40.245"W	1.94	
2249.00	14.950	101.490	2239.33	-107.26	-21.38	108.89	40°11'33.851"N	104°56'39.963"W	1.88	
2341.00	16.780	99.440	2327.82	-131.64	-25.92	133.62	40°11'33.806"N	104°56'39.644"W	2.08	
2433.00	16.350	98.790	2416.00	-157.21	-30.08	159.52	40°11'33.765"N	104°56'39.310"W	0.51	
2524.00	16.690	99.560	2503.24	-182.43	-34.21	185.06	40°11'33.724"N	104°56'38.981"W	0.44	
2616.00	16.050	99.070	2591.51	-207.69	-38.41	210.65	40°11'33.682"N	104°56'38.652"W	0.71	
2708.00	17.150	100.280	2679.68	-233.25	-42.83	236.56	40°11'33.639"N	104°56'38.318"W	1.25	
2800.00	16.580	101.180	2767.72	-259.09	-47.80	262.78	40°11'33.590"N	104°56'37.980"W	0.68	
2891.00	16.500	102.450	2854.96	-284.05	-53.10	288.14	40°11'33.537"N	104°56'37.653"W	0.41	
2983.00	16.510	107.780	2943.17	-308.76	-59.91	313.34	40°11'33.470"N	104°56'37.328"W	1.65	
3075.00	16.230	107.820	3031.44	-332.87	-67.84	338.03	40°11'33.392"N	104°56'37.010"W	0.30	
3167.00	17.160	106.140	3119.56	-357.59	-75.54	363.31	40°11'33.315"N	104°56'36.684"W	1.14	
3259.00	15.410	108.870	3207.87	-381.64	-83.27	387.91	40°11'33.239"N	104°56'36.367"W	2.08	
3351.00	15.380	100.970	3296.58	-404.73	-89.55	411.46	40°11'33.177"N	104°56'36.064"W	2.28	
3442.00	15.630	98.440	3384.27	-428.38	-93.64	435.43	40°11'33.137"N	104°56'35.755"W	0.79	
3533.00	16.460	98.280	3471.72	-452.97	-97.30	460.32	40°11'33.100"N	104°56'35.434"W	0.91	
3625.00	16.970	95.280	3559.84	-478.98	-100.41	486.59	40°11'33.070"N	104°56'35.096"W	1.09	
3717.00	16.070	95.860	3648.04	-504.80	-102.95	512.62	40°11'33.045"N	104°56'34.760"W	0.99	
3810.00	18.490	96.120	3736.83	-532.02	-105.83	540.09	40°11'33.016"N	104°56'34.406"W	2.60	
3903.00	17.970	96.240	3825.17	-560.68	-108.96	569.02	40°11'32.985"N	104°56'34.034"W	0.56	
3996.00	17.050	96.690	3913.86	-588.22	-112.11	596.82	40°11'32.954"N	104°56'33.675"W	1.00	

REFERENCE WELLPATH IDENTIFICATION			
Operator	KERR-MCGEE OIL & GAS ONSHORE LP	Slot	SLOT#38 BAREFOOT 34C-25HZ (1027'FSL & 853'FEL, SEC.25)
Area	COLORADO	Well	BAREFOOT 34C-25HZ
Field	WELD COUNTY (KERR MCGEE)	Wellbore	BAREFOOT 34C-25HZ AWB
Facility	SEC.25-T3N-R68W		

WELLPATH DATA (147 stations) † = interpolated/extrapolated station										
MD [ft]	Inclination [°]	Azimuth [°]	TVD [ft]	Vert Sect [ft]	North [ft]	East [ft]	Latitude	Longitude	DLS [°/100ft]	Comments
4089.00	15.780	95.930	4003.06	-614.09	-115.01	622.94	40°11'32.925"N	104°56'33.339"W	1.38	
4182.00	16.230	98.540	4092.46	-639.26	-118.24	648.37	40°11'32.893"N	104°56'33.011"W	0.91	
4275.00	15.360	99.560	4181.95	-663.94	-122.22	673.37	40°11'32.854"N	104°56'32.689"W	0.98	
4368.00	17.420	98.950	4271.16	-689.51	-126.43	699.27	40°11'32.813"N	104°56'32.355"W	2.22	
4460.00	17.550	98.370	4358.91	-716.51	-130.59	726.60	40°11'32.771"N	104°56'32.003"W	0.24	
4554.00	16.630	97.240	4448.76	-743.57	-134.35	753.96	40°11'32.734"N	104°56'31.651"W	1.04	
4646.00	15.870	94.460	4537.09	-768.94	-136.99	779.57	40°11'32.708"N	104°56'31.321"W	1.18	
4740.00	15.370	100.540	4627.62	-793.74	-140.27	804.63	40°11'32.676"N	104°56'30.998"W	1.82	
4825.00	15.270	101.840	4709.60	-815.44	-144.62	826.66	40°11'32.633"N	104°56'30.714"W	0.42	
4910.00	14.470	100.640	4791.75	-836.50	-148.88	848.05	40°11'32.591"N	104°56'30.438"W	1.01	
4995.00	14.850	96.040	4873.99	-857.52	-151.99	869.32	40°11'32.560"N	104°56'30.164"W	1.44	
5080.00	15.820	100.490	4955.96	-879.49	-155.24	891.55	40°11'32.528"N	104°56'29.878"W	1.79	
5165.00	17.300	102.560	5037.44	-902.85	-160.10	915.28	40°11'32.480"N	104°56'29.572"W	1.87	
5250.00	17.050	103.450	5118.65	-926.89	-165.75	939.73	40°11'32.424"N	104°56'29.257"W	0.43	
5335.00	14.960	99.030	5200.35	-949.49	-170.37	962.69	40°11'32.378"N	104°56'28.961"W	2.84	
5420.00	13.520	96.880	5282.74	-969.96	-173.28	983.39	40°11'32.349"N	104°56'28.694"W	1.80	
5505.00	13.120	97.710	5365.45	-989.18	-175.77	1002.81	40°11'32.325"N	104°56'28.444"W	0.52	
5590.00	13.310	99.460	5448.20	-1008.16	-178.67	1022.03	40°11'32.296"N	104°56'28.196"W	0.52	
5675.00	12.650	94.370	5531.03	-1026.90	-180.99	1040.96	40°11'32.273"N	104°56'27.952"W	1.55	
5760.00	11.200	94.930	5614.19	-1044.28	-182.41	1058.46	40°11'32.259"N	104°56'27.727"W	1.71	
5846.00	9.920	94.930	5698.74	-1059.86	-183.76	1074.17	40°11'32.246"N	104°56'27.524"W	1.49	
5931.00	8.690	94.310	5782.62	-1073.45	-184.87	1087.86	40°11'32.235"N	104°56'27.348"W	1.45	
6016.00	7.090	94.880	5866.81	-1085.00	-185.80	1099.49	40°11'32.226"N	104°56'27.198"W	1.88	
6101.00	6.100	90.140	5951.24	-1094.69	-186.26	1109.24	40°11'32.221"N	104°56'27.073"W	1.33	
6186.00	4.170	83.860	6035.90	-1102.28	-185.94	1116.83	40°11'32.224"N	104°56'26.975"W	2.36	
6271.00	2.470	107.120	6120.76	-1107.08	-186.15	1121.65	40°11'32.222"N	104°56'26.913"W	2.51	
6356.00	1.970	101.310	6205.69	-1110.21	-186.97	1124.83	40°11'32.214"N	104°56'26.872"W	0.64	
6442.00	1.180	127.080	6291.66	-1112.30	-187.80	1126.99	40°11'32.206"N	104°56'26.844"W	1.21	
6527.00	0.840	101.300	6376.65	-1113.57	-188.45	1128.30	40°11'32.200"N	104°56'26.827"W	0.66	
6612.00	0.670	97.960	6461.64	-1114.66	-188.64	1129.40	40°11'32.198"N	104°56'26.813"W	0.21	
6697.00	0.710	97.940	6546.64	-1115.66	-188.78	1130.42	40°11'32.196"N	104°56'26.800"W	0.05	
6782.00	7.910	262.750	6631.39	-1110.33	-189.59	1125.13	40°11'32.188"N	104°56'26.868"W	10.11	
6867.00	17.720	262.850	6714.17	-1091.53	-191.95	1106.44	40°11'32.165"N	104°56'27.109"W	11.54	
6952.00	21.290	266.160	6794.28	-1063.17	-194.59	1078.20	40°11'32.139"N	104°56'27.472"W	4.40	
7037.00	24.220	265.910	6872.66	-1030.30	-196.87	1045.41	40°11'32.116"N	104°56'27.895"W	3.45	
7123.00	34.070	269.500	6947.68	-988.51	-198.34	1003.62	40°11'32.102"N	104°56'28.434"W	11.63	
7207.00	42.750	269.710	7013.44	-936.46	-198.69	951.48	40°11'32.098"N	104°56'29.105"W	10.33	
7292.00	52.290	268.240	7070.78	-873.91	-199.87	888.88	40°11'32.087"N	104°56'29.912"W	11.30	
7377.00	59.600	268.900	7118.34	-803.60	-201.61	818.53	40°11'32.070"N	104°56'30.819"W	8.62	
7462.00	68.430	269.970	7155.55	-727.39	-202.34	742.20	40°11'32.062"N	104°56'31.802"W	10.45	
7547.00	74.650	269.890	7182.45	-646.96	-202.44	661.61	40°11'32.061"N	104°56'32.841"W	7.32	
7597.00	80.590	269.380	7193.17	-598.23	-202.75	612.80	40°11'32.058"N	104°56'33.470"W	11.92	
7650.00†	85.154	270.226	7199.74	-545.76	-202.93	560.22	40°11'32.057"N	104°56'34.147"W	8.76	7" CASING POINT
7708.00	90.150	271.140	7202.12	-488.00	-202.24	502.29	40°11'32.063"N	104°56'34.894"W	8.76	
7737.00	89.940	273.240	7202.09	-459.16	-201.13	473.32	40°11'32.074"N	104°56'35.267"W	7.28	

REFERENCE WELLPATH IDENTIFICATION			
Operator	KERR-MCGEE OIL & GAS ONSHORE LP	Slot	SLOT#38 BAREFOOT 34C-25HZ (1027'FSL & 853'FEL, SEC.25)
Area	COLORADO	Well	BAREFOOT 34C-25HZ
Field	WELD COUNTY (KERR MCGEE)	Wellbore	BAREFOOT 34C-25HZ AWP
Facility	SEC.25-T3N-R68W		

WELLPATH DATA (147 stations)										
MD [ft]	Inclination [°]	Azimuth [°]	TVD [ft]	Vert Sect [ft]	North [ft]	East [ft]	Latitude	Longitude	DLS [°/100ft]	Comments
7822.00	89.010	273.200	7202.87	-374.79	-196.35	388.46	40°11'32.122"N	104°56'36.360"W	1.10	
7907.00	89.480	273.240	7203.99	-290.42	-191.58	303.60	40°11'32.169"N	104°56'37.454"W	0.55	
7992.00	90.430	272.900	7204.06	-206.03	-187.03	218.72	40°11'32.214"N	104°56'38.548"W	1.19	
8077.00	90.250	271.380	7203.56	-121.48	-183.85	133.78	40°11'32.245"N	104°56'39.642"W	1.80	
8162.00	91.170	270.480	7202.50	-36.77	-182.47	48.80	40°11'32.259"N	104°56'40.737"W	1.51	
8247.00	90.220	267.920	7201.47	48.10	-183.66	-36.17	40°11'32.247"N	104°56'41.832"W	3.21	
8333.00	89.230	266.880	7201.88	134.08	-187.56	-122.08	40°11'32.209"N	104°56'42.939"W	1.67	
8418.00	89.820	267.310	7202.59	219.07	-191.87	-206.97	40°11'32.166"N	104°56'44.033"W	0.86	
8502.00	90.560	267.690	7202.31	303.05	-195.53	-290.89	40°11'32.130"N	104°56'45.114"W	0.99	
8588.00	89.820	267.470	7202.02	389.02	-199.16	-376.81	40°11'32.094"N	104°56'46.222"W	0.90	
8673.00	89.880	266.230	7202.25	474.02	-203.83	-461.68	40°11'32.048"N	104°56'47.315"W	1.46	
8758.00	90.860	266.480	7201.70	559.01	-209.24	-546.51	40°11'31.994"N	104°56'48.408"W	1.19	
8843.00	90.310	266.470	7200.83	644.01	-214.46	-631.34	40°11'31.943"N	104°56'49.501"W	0.65	
8928.00	89.780	268.050	7200.76	728.99	-218.53	-716.24	40°11'31.902"N	104°56'50.595"W	1.96	
9012.00	88.770	268.060	7201.83	812.94	-221.38	-800.18	40°11'31.874"N	104°56'51.677"W	1.20	
9098.00	89.320	268.410	7203.26	898.88	-224.03	-886.13	40°11'31.848"N	104°56'52.785"W	0.76	
9183.00	90.150	268.820	7203.65	983.81	-226.08	-971.10	40°11'31.828"N	104°56'53.879"W	1.09	
9268.00	91.050	268.760	7202.76	1068.72	-227.88	-1056.08	40°11'31.810"N	104°56'54.974"W	1.06	
9353.00	90.400	268.650	7201.69	1153.63	-229.80	-1141.05	40°11'31.791"N	104°56'56.069"W	0.78	
9439.00	89.820	268.940	7201.52	1239.55	-231.61	-1227.03	40°11'31.773"N	104°56'57.177"W	0.75	
9524.00	90.490	268.910	7201.29	1324.45	-233.20	-1312.01	40°11'31.757"N	104°56'58.272"W	0.79	
9609.00	90.220	269.420	7200.77	1409.34	-234.44	-1397.00	40°11'31.745"N	104°56'59.368"W	0.68	
9694.00	89.780	269.860	7200.77	1494.19	-234.97	-1482.00	40°11'31.740"N	104°57'00.463"W	0.73	
9779.00	89.110	269.530	7201.59	1579.03	-235.43	-1567.00	40°11'31.735"N	104°57'01.558"W	0.88	
9864.00	89.690	270.780	7202.48	1663.83	-235.20	-1651.99	40°11'31.737"N	104°57'02.653"W	1.62	
9950.00	89.380	269.460	7203.18	1749.63	-235.02	-1737.98	40°11'31.739"N	104°57'03.761"W	1.58	
10034.00	89.570	269.940	7203.95	1833.47	-235.45	-1821.98	40°11'31.735"N	104°57'04.844"W	0.61	
10119.00	90.860	269.430	7203.63	1918.32	-235.92	-1906.97	40°11'31.730"N	104°57'05.939"W	1.63	
10204.00	90.550	269.280	7202.58	2003.19	-236.88	-1991.96	40°11'31.720"N	104°57'07.034"W	0.41	
10289.00	90.370	268.590	7201.90	2088.09	-238.46	-2076.94	40°11'31.705"N	104°57'08.129"W	0.84	
10374.00	91.230	269.680	7200.71	2172.97	-239.74	-2161.92	40°11'31.692"N	104°57'09.224"W	1.63	
10459.00	91.260	270.330	7198.87	2257.77	-239.73	-2246.90	40°11'31.692"N	104°57'10.319"W	0.77	
10544.00	90.520	269.940	7197.55	2342.56	-239.53	-2331.89	40°11'31.694"N	104°57'11.414"W	0.98	
10629.00	90.150	269.770	7197.05	2427.39	-239.75	-2416.89	40°11'31.692"N	104°57'12.510"W	0.48	
10715.00	89.940	269.780	7196.98	2513.23	-240.09	-2502.89	40°11'31.688"N	104°57'13.618"W	0.24	
10800.00	89.510	270.250	7197.39	2598.05	-240.06	-2587.89	40°11'31.688"N	104°57'14.713"W	0.75	
10885.00	88.950	269.900	7198.53	2682.85	-239.95	-2672.88	40°11'31.689"N	104°57'15.808"W	0.78	
10970.00	89.170	269.270	7199.93	2767.69	-240.57	-2757.87	40°11'31.683"N	104°57'16.903"W	0.78	
11055.00	89.940	270.060	7200.59	2852.54	-241.07	-2842.86	40°11'31.678"N	104°57'17.999"W	1.30	
11140.00	89.780	268.910	7200.79	2937.40	-241.83	-2927.86	40°11'31.671"N	104°57'19.094"W	1.37	
11226.00	88.920	267.990	7201.77	3023.33	-244.16	-3013.82	40°11'31.647"N	104°57'20.202"W	1.46	
11311.00	88.890	269.280	7203.39	3108.24	-246.18	-3098.78	40°11'31.627"N	104°57'21.296"W	1.52	
11396.00	90.740	269.220	7203.67	3193.12	-247.29	-3183.76	40°11'31.616"N	104°57'22.391"W	2.18	
11481.00	90.580	269.270	7202.69	3278.00	-248.41	-3268.75	40°11'31.605"N	104°57'23.487"W	0.20	
11566.00	89.720	268.730	7202.47	3362.90	-249.90	-3353.74	40°11'31.590"N	104°57'24.582"W	1.19	

REFERENCE WELLPATH IDENTIFICATION			
Operator	KERR-MCGEE OIL & GAS ONSHORE LP	Slot	SLOT#38 BAREFOOT 34C-25HZ (1027'FSL & 853'FEL, SEC.25)
Area	COLORADO	Well	BAREFOOT 34C-25HZ
Field	WELD COUNTY (KERR MCGEE)	Wellbore	BAREFOOT 34C-25HZ AWB
Facility	SEC.25-T3N-R68W		

WELLPATH DATA (147 stations)										
MD [ft]	Inclination [°]	Azimuth [°]	TVD [ft]	Vert Sect [ft]	North [ft]	East [ft]	Latitude	Longitude	DLS [°/100ft]	Comments
11651.00	89.320	268.710	7203.18	3447.82	-251.80	-3438.71	40°11'31.571"N	104°57'25.677"W	0.47	
11736.00	89.630	268.840	7203.96	3532.73	-253.61	-3523.69	40°11'31.553"N	104°57'26.772"W	0.40	
11822.00	88.550	269.100	7205.32	3618.62	-255.16	-3609.66	40°11'31.538"N	104°57'27.879"W	1.29	
11907.00	88.150	267.700	7207.77	3703.53	-257.53	-3694.59	40°11'31.514"N	104°57'28.974"W	1.71	
11992.00	89.290	266.940	7209.67	3788.49	-261.50	-3779.48	40°11'31.475"N	104°57'30.068"W	1.61	
12077.00	90.060	267.380	7210.15	3873.47	-265.71	-3864.37	40°11'31.433"N	104°57'31.162"W	1.04	
12162.00	90.740	268.180	7209.56	3958.44	-269.01	-3949.30	40°11'31.401"N	104°57'32.256"W	1.24	
12247.00	90.060	267.040	7208.96	4043.41	-272.55	-4034.22	40°11'31.365"N	104°57'33.350"W	1.56	
12332.00	90.490	267.530	7208.56	4128.40	-276.58	-4119.13	40°11'31.325"N	104°57'34.444"W	0.77	
12418.00	90.000	268.340	7208.19	4214.36	-279.68	-4205.07	40°11'31.295"N	104°57'35.552"W	1.10	
12517.00	88.580	267.460	7209.42	4313.31	-283.30	-4303.99	40°11'31.259"N	104°57'36.826"W	1.69	LAST BHI MWD+IFR SURVEY
12581.00	88.580	267.460	7211.00	4377.27	-286.14	-4367.91	40°11'31.231"N	104°57'37.650"W	0.00	PROJECTION TO BIT

HOLE & CASING SECTIONS - Ref Wellbore: BAREFOOT 34C-25HZ AWB Ref Wellpath: BAREFOOT 34C-25HZ AWP									
String/Diameter	Start MD [ft]	End MD [ft]	Interval [ft]	Start TVD [ft]	End TVD [ft]	Start N/S [ft]	Start E/W [ft]	End N/S [ft]	End E/W [ft]
13.5in Open Hole	16.00	1328.00	1312.00	16.00	1327.99	0.00	0.00	-1.86	0.38
9.625in Casing Surface	16.00	1328.00	1312.00	16.00	1327.99	0.00	0.00	-1.86	0.38
8.75in Open Hole	1328.00	7661.00	6333.00	1327.99	7200.58	-1.86	0.38	-202.87	549.25
7in Casing Intermediate	16.00	7650.00	7634.00	16.00	7199.74	0.00	0.00	-202.93	560.22
6.125in Open Hole	7661.00	12581.00	4920.00	7200.58	7211.00	-202.87	549.25	-286.14	-4367.91

WELLPATH COMPOSITION - Ref Wellbore: BAREFOOT 34C-25HZ AWB Ref Wellpath: BAREFOOT 34C-25HZ AWP				
Start MD [ft]	End MD [ft]	Positional Uncertainty Model	Log Name/Comment	Wellbore
16.00	1274.00	Generic gyro - continuous (Standard)	MS GYRO SURVEYS <116-1274>	BAREFOOT 34C-25HZ AWB
1274.00	7708.00	NaviTrak (IFR)	BHI NAVITRAK MWD+IFR 8 3/4" <1352-7708>	BAREFOOT 34C-25HZ AWB
7708.00	12517.00	NaviTrak (IFR)	BHI NAVITRAK MWD+IFR 6 1/8" <7737-12517>	BAREFOOT 34C-25HZ AWB
12517.00	12581.00	Blind Drilling (std)	Projection to bit	BAREFOOT 34C-25HZ AWB



Actual Wellpath Report

BAREFOOT 34C-25HZ AWP

Page 6 of 6



REFERENCE WELLPATH IDENTIFICATION			
Operator	KERR-MCGEE OIL & GAS ONSHORE LP	Slot	SLOT#38 BAREFOOT 34C-25HZ (1027'FSL & 853'FEL, SEC.25)
Area	COLORADO	Well	BAREFOOT 34C-25HZ
Field	WELD COUNTY (KERR MCGEE)	Wellbore	BAREFOOT 34C-25HZ AWB
Facility	SEC.25-T3N-R68W		

WELLPATH COMMENTS				
MD [ft]	Inclination [°]	Azimuth [°]	TVD [ft]	Comment
16.00	0.000	347.460	16.00	TIE ON
116.00	0.150	347.460	116.00	BEGIN GYRO SURVEYS
1274.00	0.420	131.100	1273.99	TIE ONTO GYRO SURVEYS
1352.00	0.310	142.000	1351.99	BEGIN BHI MWD+IFR SURVEYS
7650.00	85.154	270.226	7199.74	7" CASING POINT
12517.00	88.580	267.460	7209.42	LAST BHI MWD+IFR SURVEY
12581.00	88.580	267.460	7211.00	PROJECTION TO BIT