

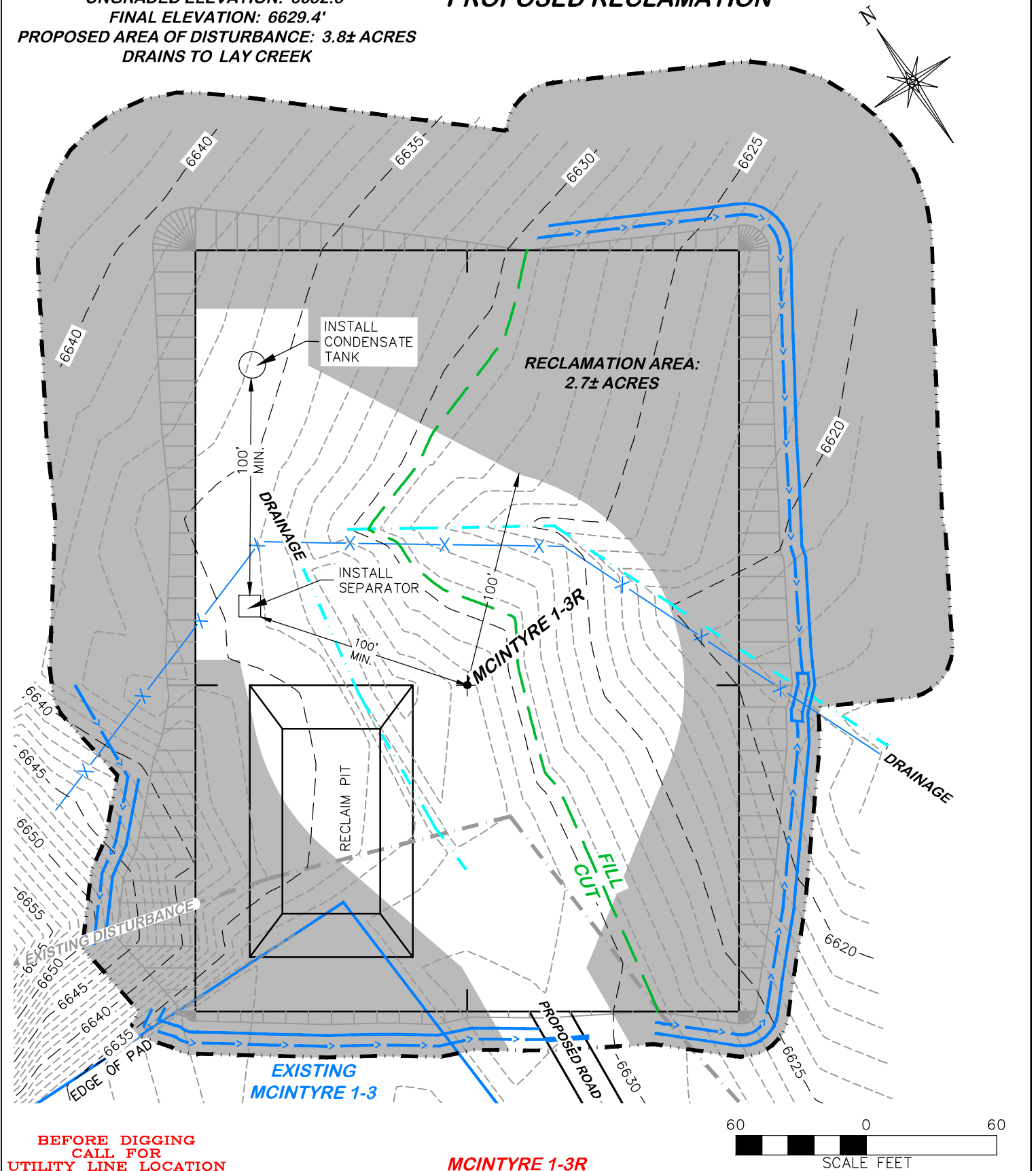
UNGRADED ELEVATION: 6632.5'

FINAL ELEVATION: 6629.4'

PROPOSED AREA OF DISTURBANCE: 3.8± ACRES

DRAINS TO LAY CREEK

## PROPOSED RECLAMATION



**BEFORE DIGGING  
CALL FOR  
UTILITY LINE LOCATION**

**MCINTYRE 1-3R**

60 0 60  
SCALE FEET



**RIFFIN & ASSOCIATES, INC.**

(307) 362-5028

1414 ELK ST., ROCK SPRINGS, WY 82901

DRAWN: 9/26/2014 - TCM

SCALE: 1" = 60'

REVISED: N/A -

DRG JOB No. 20691

EXHIBIT 2C

**CONSTRUCTION LAYOUT DRAWING 4 OF 5**

**PROPOSED RECLAMATION  
SANTA FE NATURAL RESOURCES  
MCINTYRE 1-3R**

**NESE, SECTION 3, T. 7 N., R. 94 W., 6th P.M.,  
MOFFAT COUNTY, COLORADO**