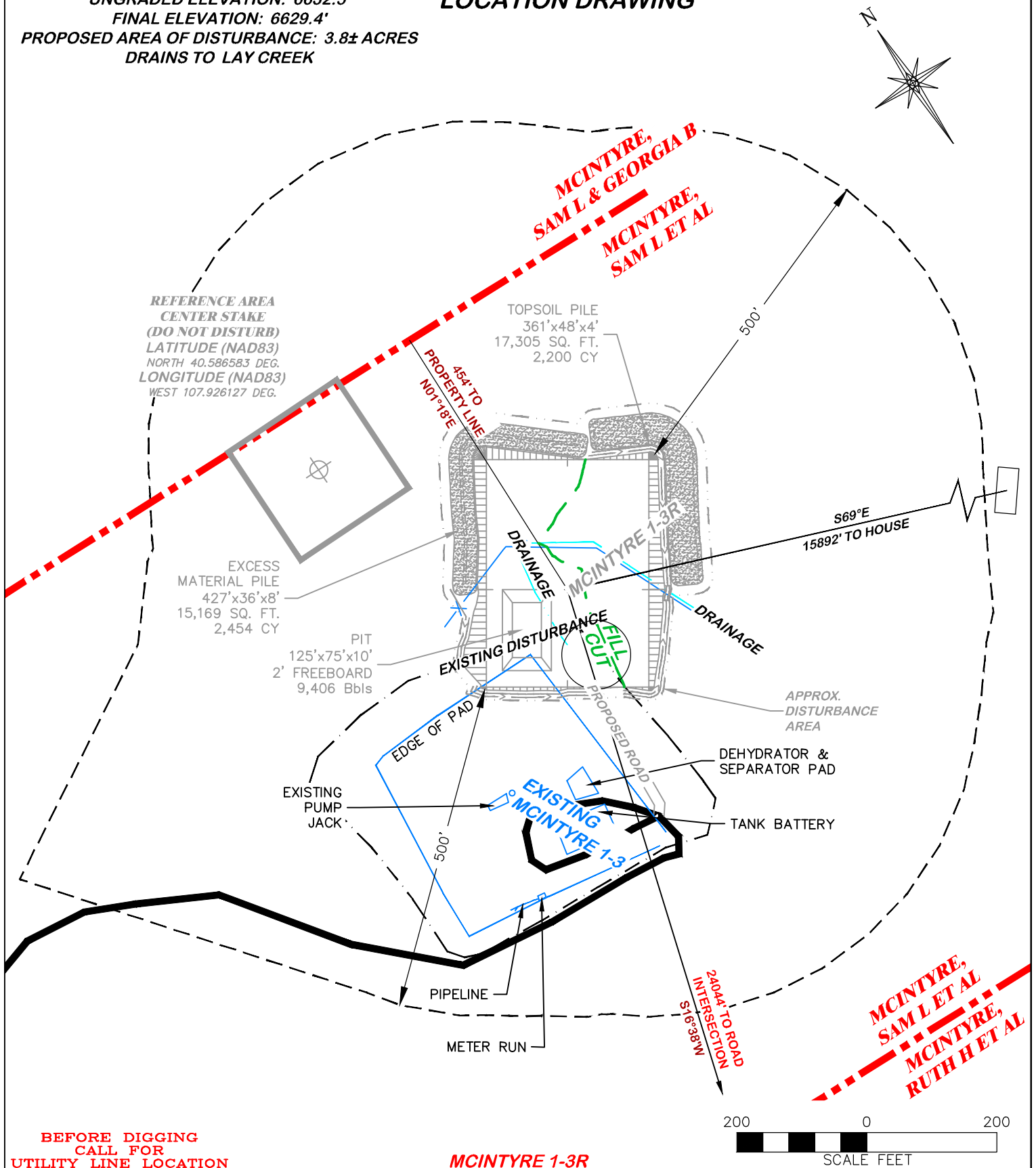


UNGRADED ELEVATION: 6632.5'
 FINAL ELEVATION: 6629.4'
 PROPOSED AREA OF DISTURBANCE: 3.8± ACRES
 DRAINS TO LAY CREEK

LOCATION DRAWING



BEFORE DIGGING
CALL FOR
UTILITY LINE LOCATION

MCINTYRE 1-3R

LOCATION DRAWING

DRG RIFFIN & ASSOCIATES, INC.
 (307) 362-5028 1414 ELK ST., ROCK SPRINGS, WY 82901

DRAWN: 9/26/2014 - TCM

SCALE: 1" = 200'

REVISED: N/A -

DRG JOB No. 20691

EXHIBIT 2D

SANTA FE NATURAL RESOURCES
MCINTYRE 1-3R
NESE, SECTION 3, T. 7 N., R. 94 W., 6th P.M.,
MOFFAT COUNTY, COLORADO