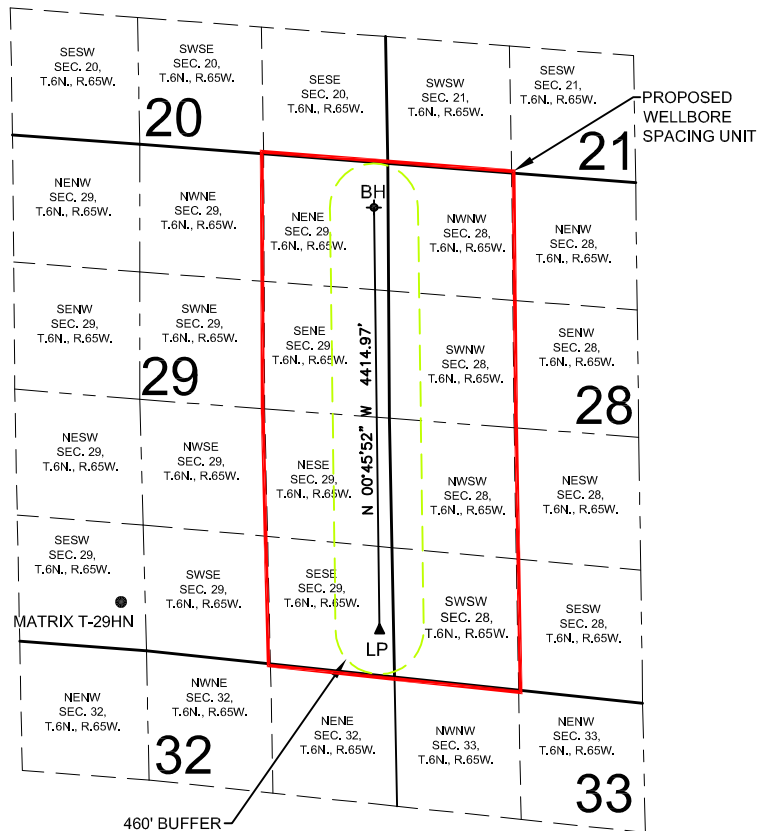


# PROPOSED 318A.e. SPACING UNIT

## SECTION 28 & 29 TOWNSHIP 6 NORTH, RANGE 65 WEST, 6TH P.M.



WELL **MATRIX T-29HN** TO BE LOCATED 488' FSL AND 2387' FWL, SEC. 29, T6N, R65W

### SURFACE LOCATION

NAD83  
LATITUDE= 40.452750°  
LONGITUDE= 104.688140°

### LANDING POINT LOCATION

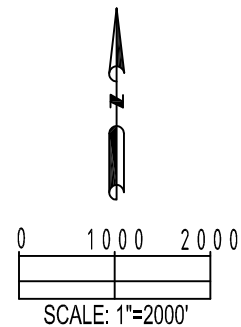
NAD83  
LATITUDE= 40.451873°  
LONGITUDE= 104.678445°


### BOTTOM HOLE LOCATION

NAD83  
LATITUDE= 40.463992°  
LONGITUDE= 104.678509°

### LEGEND

- = PROPOSED WELL
- ▲ = LANDING POINT
- ◆ = BOTTOM HOLE
- LP = LANDING POINT
- BH = BOTTOM HOLE



PREPARED BY:  Petroleum Field Services, LLC 7535 Hilltop Circle Denver, CO 80221	FIELD DATE:	SURFACE LOCATION:
	07-10-14	
	DRAWING DATE:	SE 1/4 SW 1/4, SEC. 29, T6N, R65W, 6TH P.M.
	09-25-14	
BY:	CHECKED:	WELD COUNTY, COLORADO
TJR	WDW	