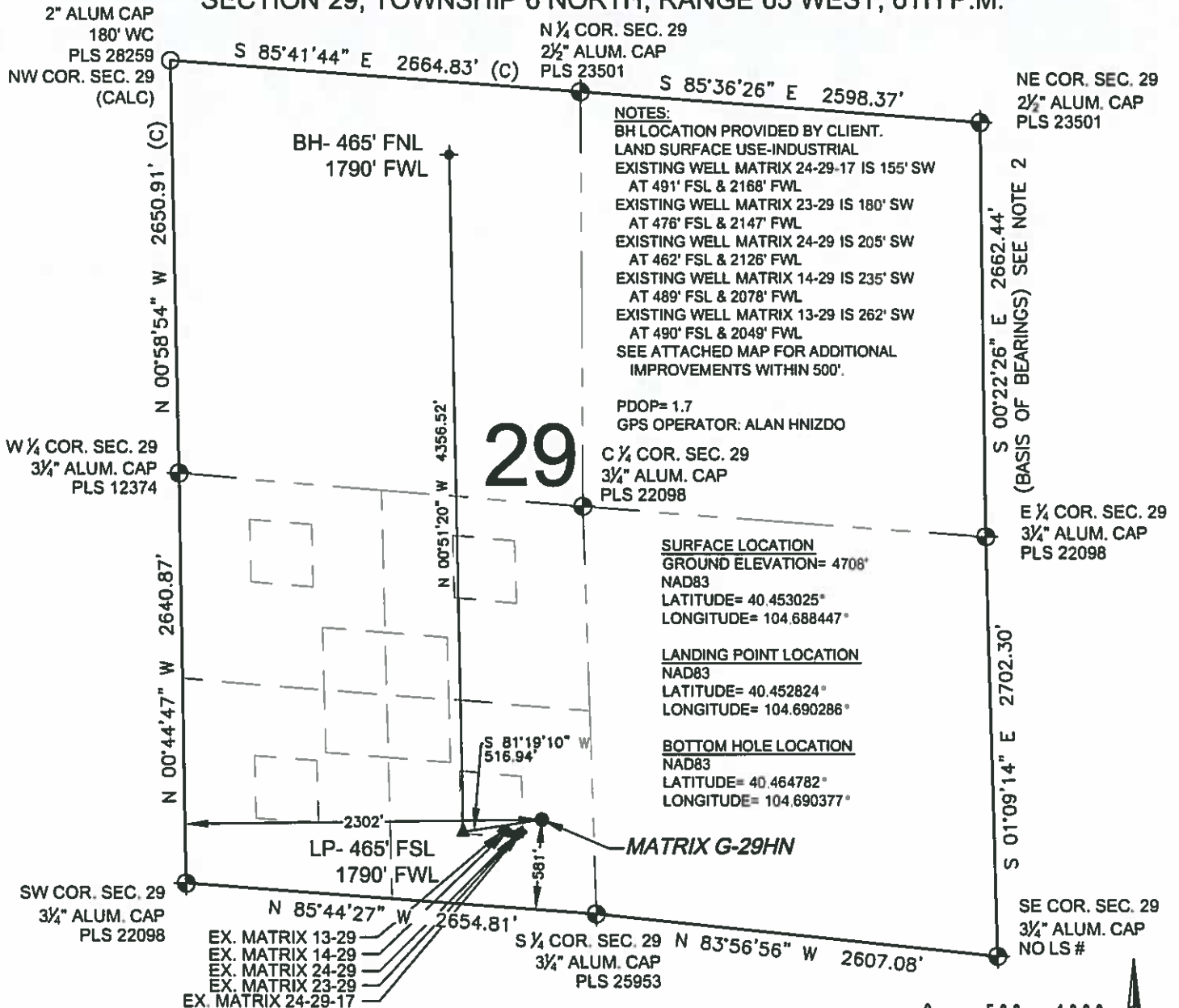


WELL LOCATION CERTIFICATE: MATRIX G-29HN

SECTION 29, TOWNSHIP 6 NORTH, RANGE 65 WEST, 6TH P.M.



LEGEND

- EXISTING MONUMENT
- CALCULATED POSITION
- PROPOSED WELL
- EXISTING WELL
- BOTTOM HOLE
- LANDING POINT
- LP = LANDING POINT
- BH = BOTTOM HOLE

NOTES:

- THIS FIELD SURVEY CONFORMS TO THE MINIMUM STANDARDS SET BY THE C.O.G.C.C., RULE NO. 215
- BEARINGS AND DISTANCE SHOWN HEREON ARE GRID AND BASED ON THE COLORADO STATE PLANE COORDINATE SYSTEM, NAD 83/2011 BETWEEN MONUMENTS AS LABELED HEREON AND ELEVATIONS SHOWN ARE NAVD 88, AS DERIVED BY GPS OBSERVATIONS.
- GRID DISTANCES ARE SHOWN, AS MEASURED IN THE FIELD, WITH TIES TO WELLS MEASURED PERPENDICULAR TO SECTION LINES.

PREPARED BY:



FIELD DATE:
07-10-14

DRAWING DATE:
10-02-14

BY: WDW
CHECKED: KAD

SURFACE LOCATION:

SE 1/4 SW 1/4,
SEC. 29, T6N, R65W, 6TH P.M.
WELD COUNTY, COLORADO

NOTICE: ACCORDING TO COLORADO LAW YOU MUST COMMENCE ANY LEGAL ACTION BASED UPON ANY DEFECT IN THIS SURVEY WITHIN THREE YEARS AFTER YOU FIRST DISCOVER SUCH DEFECT. IN NO EVENT MAY ANY ACTION BASED UPON ANY DEFECT IN THIS SURVEY BE COMMENCED MORE THAN TEN YEARS FROM THIS SAID DATE OF THIS CERTIFICATION SHOWN HEREON.

