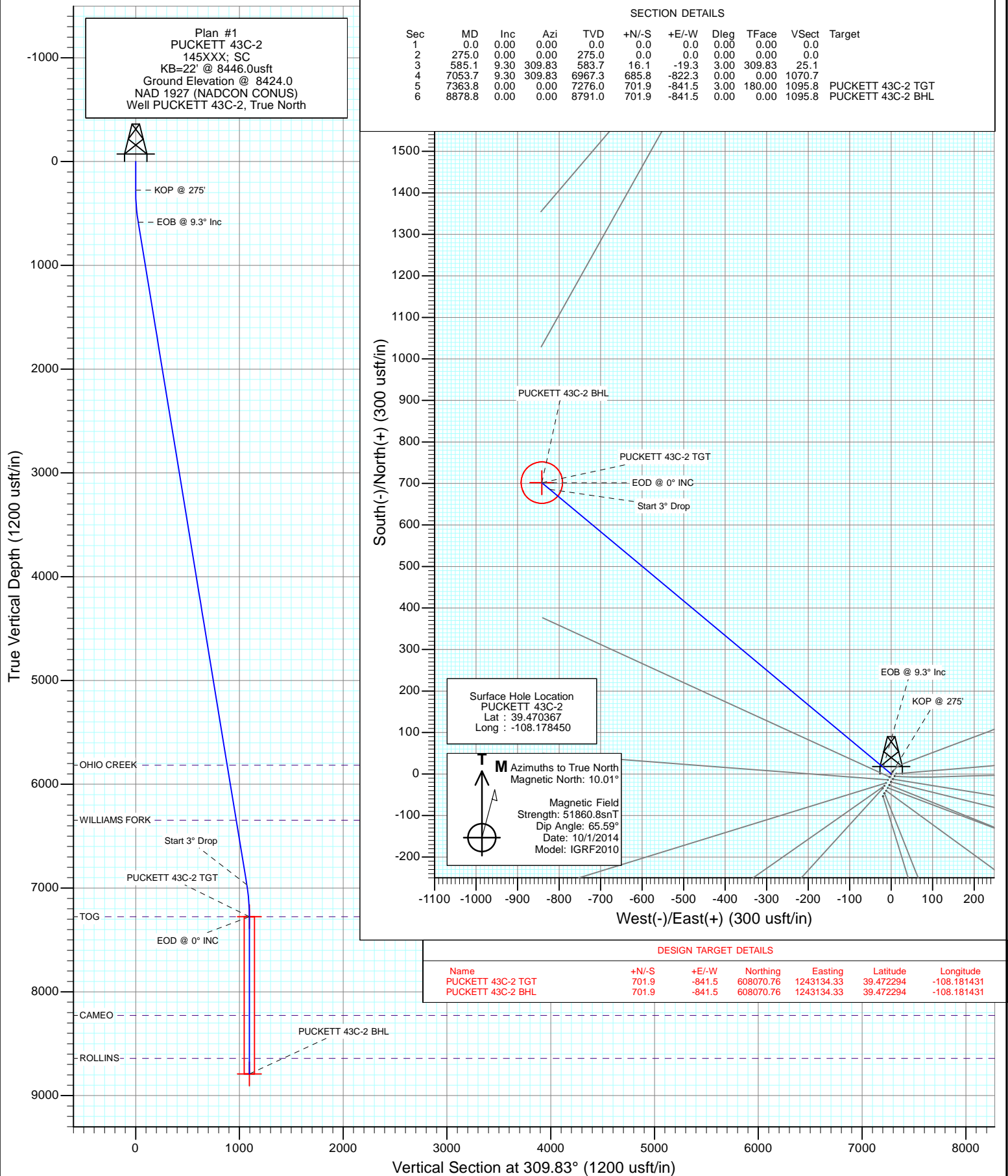
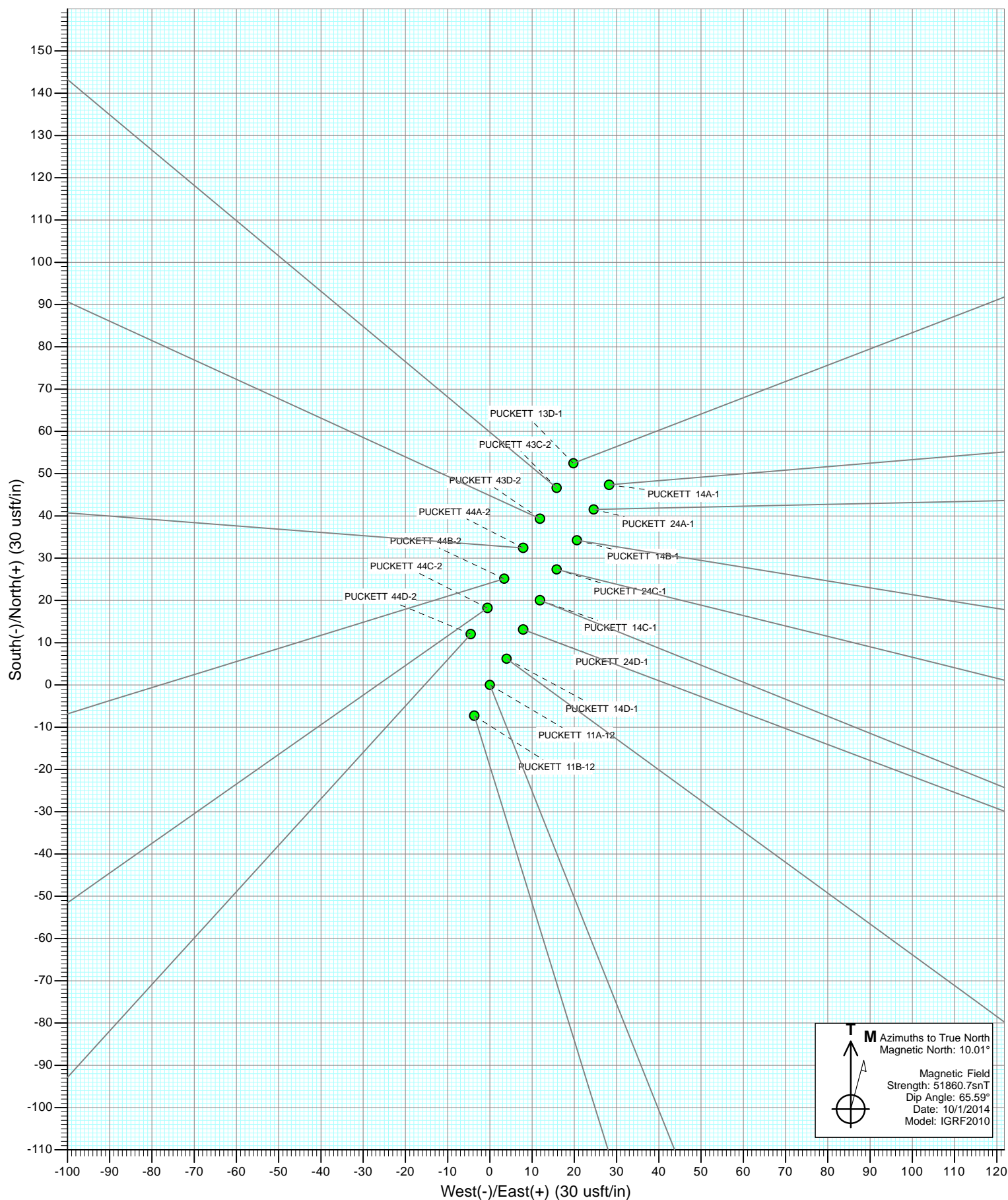
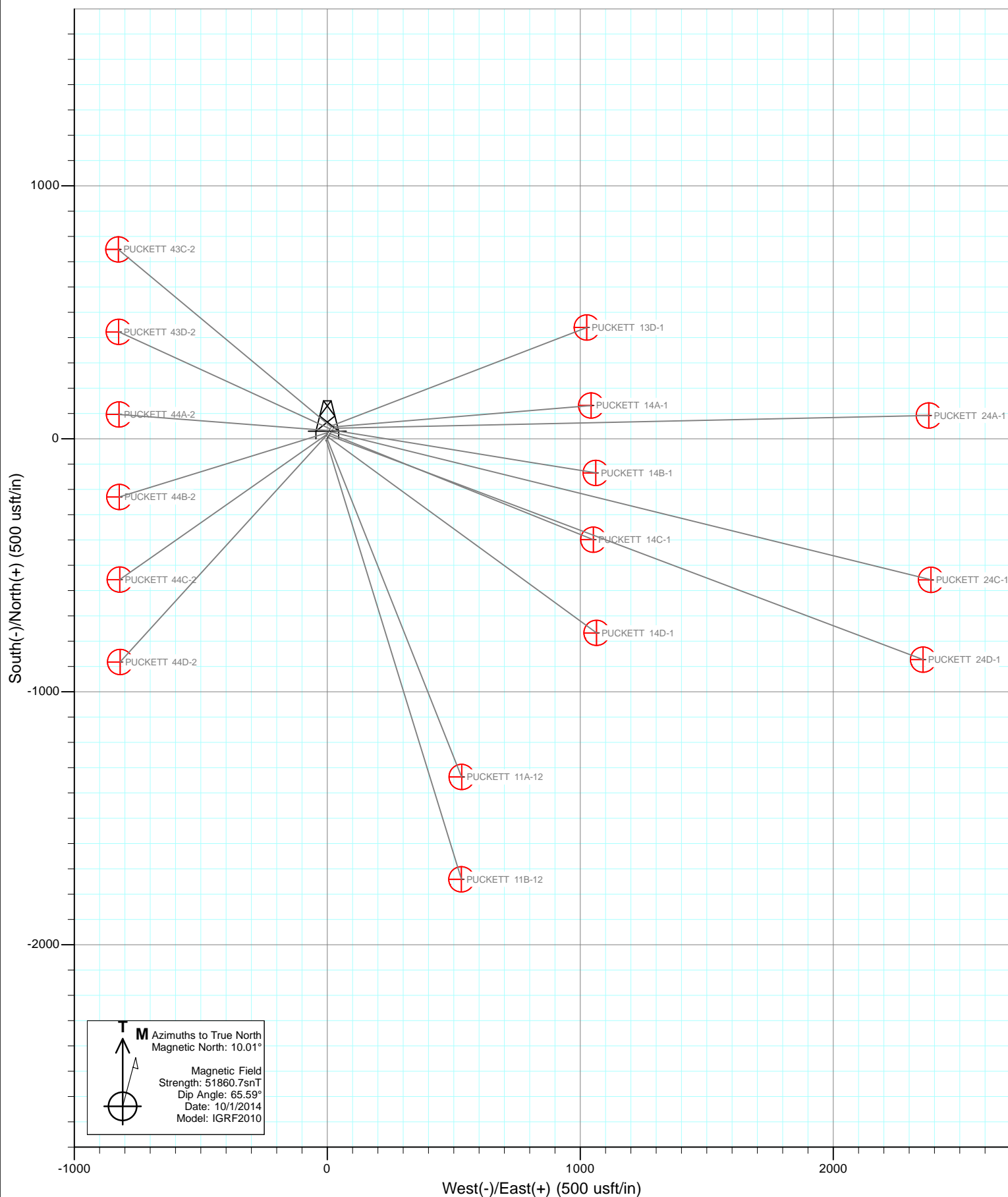




Project: Garfield County, CO
Site: S2-T7S-R97W (Puckett Pad P2)
Well: PUCKETT 43C-2
Wellbore: DD
Design: Plan #1







Cathedral Energy Services

Planning Report

Database:	USA EDM 5000 Multi Users DB	Local Co-ordinate Reference:	Well PUCKETT 43C-2
Company:	Caerus Oil & Gas (NAD 27)	TVD Reference:	KB=22' @ 8446.0usft
Project:	Garfield County, CO	MD Reference:	KB=22' @ 8446.0usft
Site:	S2-T7S-R97W (Puckett Pad P2)	North Reference:	True
Well:	PUCKETT 43C-2	Survey Calculation Method:	Minimum Curvature
Wellbore:	DD		
Design:	Plan #1		

Project	Garfield County, CO		
Map System:	US State Plane 1927 (Exact solution)	System Datum:	Mean Sea Level
Geo Datum:	NAD 1927 (NADCON CONUS)		
Map Zone:	Colorado Central 502		

Site		S2-T7S-R97W (Puckett Pad P2)			
Site Position:		Northing:	607,291.06 usft	Latitude:	39.470219
From:	Lat/Long	Easting:	1,243,933.75 usft	Longitude:	-108.178519
Position Uncertainty:	0.0 usft	Slot Radius:	13-3/16 "	Grid Convergence:	-1.69 °

Well	PUCKETT 43C-2					
Well Position	+N/-S	0.0 usft	Northing:	607,344.36 usft	Latitude:	39.470367
	+E/-W	0.0 usft	Easting:	1,243,954.81 usft	Longitude:	-108.178450
Position Uncertainty		0.0 usft	Wellhead Elevation:	0.0 usft	Ground Level:	8,424.0 usft

Wellbore	DD				
Magnetics	Model Name	Sample Date	Declination (°)	Dip Angle (°)	Field Strength (nT)
	IGRF2010	10/1/2014	10.00	65.59	51,861

Design	Plan #1				
Audit Notes:					
Version:	Phase:	PLAN	Tie On Depth:	0.0	
Vertical Section:	Depth From (TVD) (usft)	+N/-S (usft)	+E/-W (usft)	Direction (°)	
	0.0	0.0	0.0	309.83	

Plan Sections										
Measured Depth (usft)	Inclination (°)	Azimuth (°)	Vertical Depth (usft)	+N/-S (usft)	+E/-W (usft)	Dogleg Rate (°/100usft)	Build Rate (°/100usft)	Turn Rate (°/100usft)	TFO (°)	Target
0.0	0.00	0.00	0.0	0.0	0.0	0.00	0.00	0.00	0.00	
275.0	0.00	0.00	275.0	0.0	0.0	0.00	0.00	0.00	0.00	
585.1	9.30	309.83	583.7	16.1	-19.3	3.00	3.00	0.00	309.83	
7,053.7	9.30	309.83	6,967.3	685.8	-822.3	0.00	0.00	0.00	0.00	
7,363.8	0.00	0.00	7,276.0	701.9	-841.5	3.00	-3.00	0.00	180.00	PUCKETT 43C-2 TG1
8,878.8	0.00	0.00	8,791.0	701.9	-841.5	0.00	0.00	0.00	0.00	PUCKETT 43C-2 BHL

Cathedral Energy Services

Planning Report

Database:	USA EDM 5000 Multi Users DB	Local Co-ordinate Reference:	Well PUCKETT 43C-2
Company:	Caerus Oil & Gas (NAD 27)	TVD Reference:	KB=22' @ 8446.0usft
Project:	Garfield County, CO	MD Reference:	KB=22' @ 8446.0usft
Site:	S2-T7S-R97W (Puckett Pad P2)	North Reference:	True
Well:	PUCKETT 43C-2	Survey Calculation Method:	Minimum Curvature
Wellbore:	DD		
Design:	Plan #1		

Planned Survey

Measured Depth (usft)	Inclination (°)	Azimuth (°)	Vertical Depth (usft)	+N/-S (usft)	+E/-W (usft)	Vertical Section (usft)	Dogleg Rate (°/100usft)	Build Rate (°/100u)	Comments / Formations
0.0	0.00	0.00	0.0	0.0	0.0	0.0	0.00	0.00	
100.0	0.00	0.00	100.0	0.0	0.0	0.0	0.00	0.00	
200.0	0.00	0.00	200.0	0.0	0.0	0.0	0.00	0.00	
275.0	0.00	0.00	275.0	0.0	0.0	0.0	0.00	0.00	KOP @ 275'
300.0	0.75	309.83	300.0	0.1	-0.1	0.2	3.00	3.00	
400.0	3.75	309.83	399.9	2.6	-3.1	4.1	3.00	3.00	
500.0	6.75	309.83	499.5	8.5	-10.2	13.2	3.00	3.00	
585.1	9.30	309.83	583.7	16.1	-19.3	25.1	3.00	3.00	EOB @ 9.3° Inc
600.0	9.30	309.83	598.4	17.6	-21.1	27.5	0.00	0.00	
700.0	9.30	309.83	697.1	28.0	-33.6	43.7	0.00	0.00	
800.0	9.30	309.83	795.8	38.3	-46.0	59.9	0.00	0.00	
900.0	9.30	309.83	894.5	48.7	-58.4	76.0	0.00	0.00	
1,000.0	9.30	309.83	993.2	59.0	-70.8	92.2	0.00	0.00	
1,100.0	9.30	309.83	1,091.9	69.4	-83.2	108.3	0.00	0.00	
1,200.0	9.30	309.83	1,190.6	79.8	-95.6	124.5	0.00	0.00	
1,300.0	9.30	309.83	1,289.2	90.1	-108.0	140.7	0.00	0.00	
1,400.0	9.30	309.83	1,387.9	100.5	-120.4	156.8	0.00	0.00	
1,500.0	9.30	309.83	1,486.6	110.8	-132.9	173.0	0.00	0.00	
1,600.0	9.30	309.83	1,585.3	121.2	-145.3	189.2	0.00	0.00	
1,700.0	9.30	309.83	1,684.0	131.5	-157.7	205.3	0.00	0.00	
1,800.0	9.30	309.83	1,782.7	141.9	-170.1	221.5	0.00	0.00	
1,900.0	9.30	309.83	1,881.3	152.2	-182.5	237.7	0.00	0.00	
2,000.0	9.30	309.83	1,980.0	162.6	-194.9	253.8	0.00	0.00	
2,100.0	9.30	309.83	2,078.7	172.9	-207.3	270.0	0.00	0.00	
2,200.0	9.30	309.83	2,177.4	183.3	-219.8	286.2	0.00	0.00	
2,300.0	9.30	309.83	2,276.1	193.6	-232.2	302.3	0.00	0.00	
2,400.0	9.30	309.83	2,374.8	204.0	-244.6	318.5	0.00	0.00	
2,500.0	9.30	309.83	2,473.5	214.3	-257.0	334.6	0.00	0.00	
2,600.0	9.30	309.83	2,572.1	224.7	-269.4	350.8	0.00	0.00	
2,700.0	9.30	309.83	2,670.8	235.1	-281.8	367.0	0.00	0.00	
2,800.0	9.30	309.83	2,769.5	245.4	-294.2	383.1	0.00	0.00	
2,900.0	9.30	309.83	2,868.2	255.8	-306.6	399.3	0.00	0.00	
3,000.0	9.30	309.83	2,966.9	266.1	-319.1	415.5	0.00	0.00	
3,100.0	9.30	309.83	3,065.6	276.5	-331.5	431.6	0.00	0.00	
3,200.0	9.30	309.83	3,164.3	286.8	-343.9	447.8	0.00	0.00	
3,300.0	9.30	309.83	3,262.9	297.2	-356.3	464.0	0.00	0.00	
3,400.0	9.30	309.83	3,361.6	307.5	-368.7	480.1	0.00	0.00	
3,500.0	9.30	309.83	3,460.3	317.9	-381.1	496.3	0.00	0.00	
3,600.0	9.30	309.83	3,559.0	328.2	-393.5	512.5	0.00	0.00	
3,700.0	9.30	309.83	3,657.7	338.6	-406.0	528.6	0.00	0.00	
3,800.0	9.30	309.83	3,756.4	348.9	-418.4	544.8	0.00	0.00	
3,900.0	9.30	309.83	3,855.0	359.3	-430.8	560.9	0.00	0.00	
4,000.0	9.30	309.83	3,953.7	369.6	-443.2	577.1	0.00	0.00	
4,100.0	9.30	309.83	4,052.4	380.0	-455.6	593.3	0.00	0.00	
4,200.0	9.30	309.83	4,151.1	390.4	-468.0	609.4	0.00	0.00	
4,300.0	9.30	309.83	4,249.8	400.7	-480.4	625.6	0.00	0.00	
4,400.0	9.30	309.83	4,348.5	411.1	-492.8	641.8	0.00	0.00	
4,500.0	9.30	309.83	4,447.2	421.4	-505.3	657.9	0.00	0.00	
4,600.0	9.30	309.83	4,545.8	431.8	-517.7	674.1	0.00	0.00	
4,700.0	9.30	309.83	4,644.5	442.1	-530.1	690.3	0.00	0.00	
4,800.0	9.30	309.83	4,743.2	452.5	-542.5	706.4	0.00	0.00	
4,900.0	9.30	309.83	4,841.9	462.8	-554.9	722.6	0.00	0.00	

Cathedral Energy Services

Planning Report

Database:	USA EDM 5000 Multi Users DB	Local Co-ordinate Reference:	Well PUCKETT 43C-2
Company:	Caerus Oil & Gas (NAD 27)	TVD Reference:	KB=22' @ 8446.0usft
Project:	Garfield County, CO	MD Reference:	KB=22' @ 8446.0usft
Site:	S2-T7S-R97W (Puckett Pad P2)	North Reference:	True
Well:	PUCKETT 43C-2	Survey Calculation Method:	Minimum Curvature
Wellbore:	DD		
Design:	Plan #1		

Planned Survey

Measured Depth (usft)	Inclination (°)	Azimuth (°)	Vertical Depth (usft)	+N/-S (usft)	+E/-W (usft)	Vertical Section (usft)	Dogleg Rate (°/100usft)	Build Rate (°/100u)	Comments / Formations
5,000.0	9.30	309.83	4,940.6	473.2	-567.3	738.8	0.00	0.00	
5,100.0	9.30	309.83	5,039.3	483.5	-579.7	754.9	0.00	0.00	
5,200.0	9.30	309.83	5,138.0	493.9	-592.2	771.1	0.00	0.00	
5,300.0	9.30	309.83	5,236.6	504.2	-604.6	787.2	0.00	0.00	
5,400.0	9.30	309.83	5,335.3	514.6	-617.0	803.4	0.00	0.00	
5,500.0	9.30	309.83	5,434.0	524.9	-629.4	819.6	0.00	0.00	
5,600.0	9.30	309.83	5,532.7	535.3	-641.8	835.7	0.00	0.00	
5,700.0	9.30	309.83	5,631.4	545.7	-654.2	851.9	0.00	0.00	
5,800.0	9.30	309.83	5,730.1	556.0	-666.6	868.1	0.00	0.00	
5,887.1	9.30	309.83	5,816.0	565.0	-677.4	882.1	0.00	0.00	OHIO CREEK
5,900.0	9.30	309.83	5,828.7	566.4	-679.0	884.2	0.00	0.00	
6,000.0	9.30	309.83	5,927.4	576.7	-691.5	900.4	0.00	0.00	
6,100.0	9.30	309.83	6,026.1	587.1	-703.9	916.6	0.00	0.00	
6,200.0	9.30	309.83	6,124.8	597.4	-716.3	932.7	0.00	0.00	
6,300.0	9.30	309.83	6,223.5	607.8	-728.7	948.9	0.00	0.00	
6,400.0	9.30	309.83	6,322.2	618.1	-741.1	965.1	0.00	0.00	
6,424.1	9.30	309.83	6,346.0	620.6	-744.1	969.0	0.00	0.00	WILLIAMS FORK
6,500.0	9.30	309.83	6,420.9	628.5	-753.5	981.2	0.00	0.00	
6,600.0	9.30	309.83	6,519.5	638.8	-765.9	997.4	0.00	0.00	
6,700.0	9.30	309.83	6,618.2	649.2	-778.3	1,013.5	0.00	0.00	
6,800.0	9.30	309.83	6,716.9	659.5	-790.8	1,029.7	0.00	0.00	
6,900.0	9.30	309.83	6,815.6	669.9	-803.2	1,045.9	0.00	0.00	
7,000.0	9.30	309.83	6,914.3	680.3	-815.6	1,062.0	0.00	0.00	
7,053.7	9.30	309.83	6,967.3	685.8	-822.3	1,070.7	0.00	0.00	Start 3° Drop
7,100.0	7.91	309.83	7,013.1	690.2	-827.6	1,077.6	3.00	-3.00	
7,200.0	4.91	309.83	7,112.4	697.4	-836.2	1,088.8	3.00	-3.00	
7,300.0	1.91	309.83	7,212.2	701.2	-840.7	1,094.8	3.00	-3.00	
7,363.8	0.00	0.00	7,276.0	701.9	-841.5	1,095.8	3.00	-3.00	EOD @ 0° INC - TOG
7,400.0	0.00	0.00	7,312.2	701.9	-841.5	1,095.8	0.00	0.00	
7,500.0	0.00	0.00	7,412.2	701.9	-841.5	1,095.8	0.00	0.00	
7,600.0	0.00	0.00	7,512.2	701.9	-841.5	1,095.8	0.00	0.00	
7,700.0	0.00	0.00	7,612.2	701.9	-841.5	1,095.8	0.00	0.00	
7,800.0	0.00	0.00	7,712.2	701.9	-841.5	1,095.8	0.00	0.00	
7,900.0	0.00	0.00	7,812.2	701.9	-841.5	1,095.8	0.00	0.00	
8,000.0	0.00	0.00	7,912.2	701.9	-841.5	1,095.8	0.00	0.00	
8,100.0	0.00	0.00	8,012.2	701.9	-841.5	1,095.8	0.00	0.00	
8,200.0	0.00	0.00	8,112.2	701.9	-841.5	1,095.8	0.00	0.00	
8,300.0	0.00	0.00	8,212.2	701.9	-841.5	1,095.8	0.00	0.00	
8,313.8	0.00	0.00	8,226.0	701.9	-841.5	1,095.8	0.00	0.00	CAMEO
8,400.0	0.00	0.00	8,312.2	701.9	-841.5	1,095.8	0.00	0.00	
8,500.0	0.00	0.00	8,412.2	701.9	-841.5	1,095.8	0.00	0.00	
8,600.0	0.00	0.00	8,512.2	701.9	-841.5	1,095.8	0.00	0.00	
8,700.0	0.00	0.00	8,612.2	701.9	-841.5	1,095.8	0.00	0.00	
8,728.8	0.00	0.00	8,641.0	701.9	-841.5	1,095.8	0.00	0.00	ROLLINS
8,800.0	0.00	0.00	8,712.2	701.9	-841.5	1,095.8	0.00	0.00	
8,878.8	0.00	0.00	8,791.0	701.9	-841.5	1,095.8	0.00	0.00	TD @ 8,878.8' MD

Cathedral Energy Services

Planning Report

Database:	USA EDM 5000 Multi Users DB	Local Co-ordinate Reference:	Well PUCKETT 43C-2
Company:	Caerus Oil & Gas (NAD 27)	TVD Reference:	KB=22' @ 8446.0usft
Project:	Garfield County, CO	MD Reference:	KB=22' @ 8446.0usft
Site:	S2-T7S-R97W (Puckett Pad P2)	North Reference:	True
Well:	PUCKETT 43C-2	Survey Calculation Method:	Minimum Curvature
Wellbore:	DD		
Design:	Plan #1		

Targets									
Target Name									
- hit/miss target	Dip Angle	Dip Dir.	TVD	+N/-S	+E/-W	Northing	Easting	Latitude	Longitude
- Shape	(°)	(°)	(usft)	(usft)	(usft)	(usft)	(usft)		
PUCKETT 43C-2 TGT	0.00	0.00	7,276.0	701.9	-841.5	608,070.76	1,243,134.33	39.472294	-108.181431
- plan hits target center									
- Point									
PUCKETT 43C-2 BHL	0.00	0.00	8,791.0	701.9	-841.5	608,070.76	1,243,134.33	39.472294	-108.181431
- plan hits target center									
- Circle (radius 50.0)									

Formations						
Measured Depth	Vertical Depth	Name	Lithology	Dip	Dip Direction	
(usft)	(usft)			(°)	(°)	
5,887.1	5,816.0	OHIO CREEK				
6,424.1	6,346.0	WILLIAMS FORK				
7,363.8	7,276.0	TOG				
8,313.8	8,226.0	CAMEO				
8,728.8	8,641.0	ROLLINS				

Plan Annotations					
Measured Depth	Vertical Depth	Local Coordinates			
(usft)	(usft)	+N/-S	+E/-W	Comment	
(usft)	(usft)	(usft)	(usft)		
275.0	275.0	0.0	0.0	KOP @ 275'	
585.1	583.7	16.1	-19.3	EOB @ 9.3° Inc	
7,053.7	6,967.3	685.8	-822.3	Start 3° Drop	
7,363.8	7,276.0	701.9	-841.5	EOD @ 0° INC	
8,878.8	8,791.0	701.9	-841.5	TD @ 8,878.8' MD	

Caerus Oil & Gas (NAD 27)

Garfield County, CO

S2-T7S-R97W (Puckett Pad P2)

PUCKETT 43C-2

DD

Plan #1

Anticollision Report

01 October, 2014

Cathedral Energy Services

Anticollision Report

Company:	Caerus Oil & Gas (NAD 27)	Local Co-ordinate Reference:	Well PUCKETT 43C-2
Project:	Garfield County, CO	TVD Reference:	KB=22' @ 8446.0usft
Reference Site:	S2-T7S-R97W (Puckett Pad P2)	MD Reference:	KB=22' @ 8446.0usft
Site Error:	0.0usft	North Reference:	True
Reference Well:	PUCKETT 43C-2	Survey Calculation Method:	Minimum Curvature
Well Error:	0.0usft	Output errors are at	2.00 sigma
Reference Wellbore	DD	Database:	USA EDM 5000 Multi Users DB
Reference Design:	Plan #1	Offset TVD Reference:	Offset Datum

Reference	Plan #1		
Filter type:	NO GLOBAL FILTER: Using user defined selection & filtering criteria		
Interpolation Method:	MD Interval 100.0usft	Error Model:	ISCWSA
Depth Range:	Unlimited	Scan Method:	Closest Approach 3D
Results Limited by:	Maximum center-center distance of 200.0usft	Error Surface:	Elliptical Conic
Warning Levels Evaluated at:	2.00 Sigma		

Survey Tool Program		Date	10/1/2014		
From (usft)	To (usft)	Survey (Wellbore)	Tool Name	Description	
0.0	8,877.8	Plan #1 (DD)	ISCWSA MWD	MWD - Standard	

Cathedral Energy Services

Anticollision Report

Company:	Caerus Oil & Gas (NAD 27)	Local Co-ordinate Reference:	Well PUCKETT 43C-2
Project:	Garfield County, CO	TVD Reference:	KB=22' @ 8446.0usft
Reference Site:	S2-T7S-R97W (Puckett Pad P2)	MD Reference:	KB=22' @ 8446.0usft
Site Error:	0.0usft	North Reference:	True
Reference Well:	PUCKETT 43C-2	Survey Calculation Method:	Minimum Curvature
Well Error:	0.0usft	Output errors are at	2.00 sigma
Reference Wellbore	DD	Database:	USA EDM 5000 Multi Users DB
Reference Design:	Plan #1	Offset TVD Reference:	Offset Datum

Summary

Site Name Offset Well - Wellbore - Design	Reference	Offset	Distance		Separation	Warning
	Measured Depth (usft)	Measured Depth (usft)	Between Centres (usft)	Between Ellipses (usft)		
S2-T7S-R97W (Puckett Pad H2)						
PUCKETT 42D-2 - DD - Plan #1						Out of range
PUCKETT 43A-2 - DD - Plan #1						Out of range
PUCKETT 43B-2 - DD - Plan #1						Out of range
S2-T7S-R97W (Puckett Pad P2)						
PUCKETT 11A-12 - DD - Plan #1	200.0	200.0	49.2	48.6	78.778	CC
PUCKETT 11A-12 - DD - Plan #1	234.0	234.0	49.3	48.5	63.335	ES
PUCKETT 11A-12 - DD - Plan #1	500.0	491.9	69.8	67.7	33.217	SF
PUCKETT 11B-12 - DD - Plan #1	200.0	200.0	57.3	56.7	91.737	CC, ES
PUCKETT 11B-12 - DD - Plan #1	500.0	488.6	84.1	82.0	39.615	SF
PUCKETT 13D-1 - DD - Plan #1	200.0	200.0	7.0	6.4	11.263	CC, ES
PUCKETT 13D-1 - DD - Plan #1	300.0	299.7	8.5	7.4	7.891	SF
PUCKETT 14A-1 - DD - Plan #1	200.0	200.0	12.4	11.8	19.914	CC
PUCKETT 14A-1 - DD - Plan #1	300.0	300.0	12.6	11.5	11.670	ES
PUCKETT 14A-1 - DD - Plan #1	400.0	399.9	15.7	14.1	9.861	SF
PUCKETT 14B-1 - DD - Plan #1	200.0	200.0	13.3	12.7	21.248	CC
PUCKETT 14B-1 - DD - Plan #1	300.0	300.0	13.4	12.3	12.449	ES
PUCKETT 14B-1 - DD - Plan #1	400.0	399.9	17.0	15.4	10.557	SF
PUCKETT 14C-1 - DD - Plan #1	200.0	200.0	26.9	26.3	43.013	CC
PUCKETT 14C-1 - DD - Plan #1	300.0	300.0	27.0	25.9	25.082	ES
PUCKETT 14C-1 - DD - Plan #1	500.0	497.7	39.0	36.8	18.195	SF
PUCKETT 14D-1 - DD - Plan #1	200.0	200.0	42.1	41.5	67.421	CC
PUCKETT 14D-1 - DD - Plan #1	300.0	300.0	42.2	41.1	39.277	ES
PUCKETT 14D-1 - DD - Plan #1	500.0	496.0	55.3	53.2	26.190	SF
PUCKETT 24A-1 - DD - Plan #1	200.0	200.0	10.1	9.5	16.210	CC
PUCKETT 24A-1 - DD - Plan #1	300.0	300.0	10.3	9.2	9.535	ES, SF
PUCKETT 24C-1 - DD - Plan #1	200.0	200.0	19.3	18.7	30.887	CC
PUCKETT 24C-1 - DD - Plan #1	300.0	299.9	19.6	18.5	18.321	ES
PUCKETT 24C-1 - DD - Plan #1	400.0	399.0	24.9	23.3	15.666	SF
PUCKETT 24D-1 - DD - Plan #1	200.0	200.0	34.4	33.8	55.092	CC
PUCKETT 24D-1 - DD - Plan #1	213.0	213.0	34.4	33.8	50.517	ES
PUCKETT 24D-1 - DD - Plan #1	500.0	494.5	55.6	53.3	24.738	SF
PUCKETT 43D-2 - DD - Plan #1	200.0	200.0	8.3	7.7	13.257	CC
PUCKETT 43D-2 - DD - Plan #1	300.0	300.0	8.3	7.2	7.748	ES
PUCKETT 43D-2 - DD - Plan #1	500.0	500.1	12.5	10.4	6.042	SF
PUCKETT 44A-2 - DD - Plan #1	200.0	200.0	16.3	15.6	26.016	CC
PUCKETT 44A-2 - DD - Plan #1	300.0	300.0	16.3	15.2	15.173	ES
PUCKETT 44A-2 - DD - Plan #1	500.0	499.6	22.4	20.4	10.905	SF
PUCKETT 44B-2 - DD - Plan #1	200.0	200.0	24.8	24.2	39.724	CC
PUCKETT 44B-2 - DD - Plan #1	300.0	300.0	24.8	23.8	23.150	ES
PUCKETT 44B-2 - DD - Plan #1	500.0	498.0	33.8	31.7	16.693	SF
PUCKETT 44C-2 - DD - Plan #1	200.0	200.0	32.8	32.2	52.478	CC
PUCKETT 44C-2 - DD - Plan #1	300.0	299.6	33.0	31.9	30.874	ES
PUCKETT 44C-2 - DD - Plan #1	500.0	495.5	47.4	45.4	23.470	SF
PUCKETT 44D-2 - DD - Plan #1	200.0	200.0	40.1	39.5	64.218	CC, ES
PUCKETT 44D-2 - DD - Plan #1	500.0	492.3	61.8	59.7	30.288	SF

Cathedral Energy Services

Anticollision Report

Company:	Caerus Oil & Gas (NAD 27)	Local Co-ordinate Reference:	Well PUCKETT 43C-2
Project:	Garfield County, CO	TVD Reference:	KB=22' @ 8446.0usft
Reference Site:	S2-T7S-R97W (Puckett Pad P2)	MD Reference:	KB=22' @ 8446.0usft
Site Error:	0.0usft	North Reference:	True
Reference Well:	PUCKETT 43C-2	Survey Calculation Method:	Minimum Curvature
Well Error:	0.0usft	Output errors are at	2.00 sigma
Reference Wellbore	DD	Database:	USA EDM 5000 Multi Users DB
Reference Design:	Plan #1	Offset TVD Reference:	Offset Datum

Offset Design S2-T7S-R97W (Puckett Pad P2) - PUCKETT 11A-12 - DD - Plan #1													Offset Site Error:	0.0 usft
Survey Program: 0-ISCWSA MWD													Offset Well Error:	0.0 usft
Reference		Offset		Semi Major Axis			Distance						Warning	
Measured Depth (usft)	Vertical Depth (usft)	Measured Depth (usft)	Vertical Depth (usft)	Reference (usft)	Offset (usft)	Highside Toolface (°)	Offset Wellbore Centre +N/-S (usft)	+E/-W (usft)	Between Centres (usft)	Between Ellipses (usft)	Total Uncertainty Axis	Separation Factor		
0.0	0.0	0.0	0.0	0.0	0.0	-161.27	-46.6	-15.8	49.2					
100.0	100.0	100.0	100.0	0.1	0.1	-161.27	-46.6	-15.8	49.2	49.0	0.18	280.774		
200.0	200.0	200.0	200.0	0.3	0.3	-161.27	-46.6	-15.8	49.2	48.6	0.62	78.778 CC		
234.0	234.0	234.0	234.0	0.4	0.4	-111.18	-46.6	-15.8	49.3	48.5	0.78	63.335 ES		
300.0	300.0	299.0	299.0	0.5	0.5	-111.73	-47.2	-15.6	49.8	48.7	1.06	46.902		
400.0	399.9	396.5	396.3	0.8	0.7	-118.55	-51.8	-13.7	55.6	54.1	1.52	36.547		
500.0	499.5	491.9	491.3	1.0	1.0	-129.02	-60.8	-10.2	69.8	67.7	2.10	33.217 SF		
600.0	598.4	584.1	582.4	1.3	1.2	-138.38	-73.7	-5.0	94.1	91.4	2.75	34.261		
700.0	697.1	673.9	670.4	1.6	1.6	-144.83	-90.1	1.5	126.0	122.7	3.29	38.275		
800.0	795.8	767.2	761.6	2.0	2.0	-148.90	-108.6	8.8	160.5	156.7	3.79	42.351		
900.0	894.5	860.6	852.9	2.3	2.4	-151.53	-127.1	16.2	195.4	191.1	4.28	45.686		

Cathedral Energy Services

Anticollision Report

Company:	Caerus Oil & Gas (NAD 27)	Local Co-ordinate Reference:	Well PUCKETT 43C-2
Project:	Garfield County, CO	TVD Reference:	KB=22' @ 8446.0usft
Reference Site:	S2-T7S-R97W (Puckett Pad P2)	MD Reference:	KB=22' @ 8446.0usft
Site Error:	0.0usft	North Reference:	True
Reference Well:	PUCKETT 43C-2	Survey Calculation Method:	Minimum Curvature
Well Error:	0.0usft	Output errors are at	2.00 sigma
Reference Wellbore	DD	Database:	USA EDM 5000 Multi Users DB
Reference Design:	Plan #1	Offset TVD Reference:	Offset Datum

Offset Design S2-T7S-R97W (Puckett Pad P2) - PUCKETT 11B-12 - DD - Plan #1													Offset Site Error: 0.0 usft	
Survey Program: 0-ISWWSA MWD													Offset Well Error: 0.0 usft	
Reference		Offset		Semi Major Axis			Distance							Warning
Measured Depth (usft)	Vertical Depth (usft)	Measured Depth (usft)	Vertical Depth (usft)	Reference (usft)	Offset (usft)	Highside Toolface (°)	Offset Wellbore Centre +N/-S (usft)	+E/-W (usft)	Between Centres (usft)	Between Ellipses (usft)	Total Uncertainty Axis	Separation Factor		
0.0	0.0	0.0	0.0	0.0	0.0	-160.13	-53.9	-19.5	57.3					
100.0	100.0	100.0	100.0	0.1	0.1	-160.13	-53.9	-19.5	57.3	57.1	0.18	326.961		
200.0	200.0	200.0	200.0	0.3	0.3	-160.13	-53.9	-19.5	57.3	56.7	0.62	91.737	CC, ES	
300.0	300.0	297.6	297.5	0.5	0.5	-111.53	-56.3	-18.7	59.4	58.4	1.05	56.385		
400.0	399.9	394.2	393.9	0.8	0.7	-117.97	-63.3	-16.6	67.6	66.0	1.54	43.930		
500.0	499.5	488.6	487.5	1.0	1.0	-126.86	-74.7	-13.1	84.1	82.0	2.12	39.615	SF	
600.0	598.4	579.5	577.0	1.3	1.3	-134.89	-89.8	-8.4	110.3	107.5	2.76	39.900		
700.0	697.1	667.0	662.4	1.6	1.7	-140.73	-108.2	-2.8	143.9	140.6	3.31	43.449		
800.0	795.8	754.7	747.1	2.0	2.1	-144.49	-130.0	4.0	182.3	178.4	3.86	47.263		

Cathedral Energy Services

Anticollision Report

Company:	Caerus Oil & Gas (NAD 27)	Local Co-ordinate Reference:	Well PUCKETT 43C-2
Project:	Garfield County, CO	TVD Reference:	KB=22' @ 8446.0usft
Reference Site:	S2-T7S-R97W (Puckett Pad P2)	MD Reference:	KB=22' @ 8446.0usft
Site Error:	0.0usft	North Reference:	True
Reference Well:	PUCKETT 43C-2	Survey Calculation Method:	Minimum Curvature
Well Error:	0.0usft	Output errors are at	2.00 sigma
Reference Wellbore	DD	Database:	USA EDM 5000 Multi Users DB
Reference Design:	Plan #1	Offset TVD Reference:	Offset Datum

Offset Design S2-T7S-R97W (Puckett Pad P2) - PUCKETT 13D-1 - DD - Plan #1													Offset Site Error:	0.0 usft
Survey Program: 0-ISCSWA MWD													Offset Well Error:	0.0 usft
Reference		Offset		Semi Major Axis			Distance						Warning	
Measured Depth (usft)	Vertical Depth (usft)	Measured Depth (usft)	Vertical Depth (usft)	Reference (usft)	Offset (usft)	Highside Toolface (°)	Offset Wellbore Centre +N/-S (usft)	+E/-W (usft)	Between Centres (usft)	Between Ellipses (usft)	Total Uncertainty Axis	Separation Factor		
0.0	0.0	0.0	0.0	0.0	0.0	34.17	5.8	4.0	7.0					
100.0	100.0	100.0	100.0	0.1	0.1	34.17	5.8	4.0	7.0	6.9	0.18	40.143		
200.0	200.0	200.0	200.0	0.3	0.3	34.17	5.8	4.0	7.0	6.4	0.62	11.263 CC, ES		
300.0	300.0	299.7	299.7	0.5	0.5	86.41	6.9	4.9	8.5	7.4	1.08	7.891 SF		
400.0	399.9	398.8	398.5	0.8	0.8	102.56	11.9	9.0	15.4	13.8	1.55	9.897		
500.0	499.5	496.8	495.9	1.0	1.0	117.59	19.2	16.8	29.2	27.1	2.10	13.903		
600.0	598.4	592.3	590.5	1.3	1.3	130.19	25.1	28.9	51.2	48.5	2.72	18.820		
700.0	697.1	688.5	685.5	1.6	1.6	137.00	30.4	43.1	77.6	74.3	3.25	23.902		
800.0	795.8	784.7	780.5	2.0	1.9	140.35	35.8	57.3	104.4	100.7	3.75	27.821		
900.0	894.5	880.9	875.5	2.3	2.3	142.32	41.1	71.5	131.5	127.2	4.27	30.807		
1,000.0	993.2	977.1	970.5	2.7	2.6	143.62	46.4	85.7	158.6	153.8	4.79	33.123		
1,100.0	1,091.9	1,073.3	1,065.5	3.1	3.0	144.54	51.8	99.9	185.8	180.5	5.32	34.960		

Cathedral Energy Services

Anticollision Report

Company:	Caerus Oil & Gas (NAD 27)	Local Co-ordinate Reference:	Well PUCKETT 43C-2
Project:	Garfield County, CO	TVD Reference:	KB=22' @ 8446.0usft
Reference Site:	S2-T7S-R97W (Puckett Pad P2)	MD Reference:	KB=22' @ 8446.0usft
Site Error:	0.0usft	North Reference:	True
Reference Well:	PUCKETT 43C-2	Survey Calculation Method:	Minimum Curvature
Well Error:	0.0usft	Output errors are at	2.00 sigma
Reference Wellbore	DD	Database:	USA EDM 5000 Multi Users DB
Reference Design:	Plan #1	Offset TVD Reference:	Offset Datum

Offset Design S2-T7S-R97W (Puckett Pad P2) - PUCKETT 14A-1 - DD - Plan #1												Offset Site Error:	0.0 usft
Survey Program: 0-ISCSWA MWD												Offset Well Error:	0.0 usft
Reference		Offset		Semi Major Axis		Distance							
Measured Depth (usft)	Vertical Depth (usft)	Measured Depth (usft)	Vertical Depth (usft)	Reference (usft)	Offset (usft)	Highside Toolface (°)	Offset Wellbore Centre +N/-S (usft)	+E/-W (usft)	Between Centres (usft)	Between Ellipses (usft)	Total Uncertainty Axis	Separation Factor	Warning
0.0	0.0	0.0	0.0	0.0	0.0	86.64	0.7	12.4	12.4				
100.0	100.0	100.0	100.0	0.1	0.1	86.64	0.7	12.4	12.4	12.3	0.18	70.974	
200.0	200.0	200.0	200.0	0.3	0.3	86.64	0.7	12.4	12.4	11.8	0.62	19.914 CC	
255.6	255.6	255.6	255.6	0.4	0.4	137.44	0.7	12.4	12.6	11.7	0.88	14.381	
300.0	300.0	300.0	300.0	0.5	0.5	137.32	0.7	12.4	12.6	11.5	1.08	11.670 ES	
400.0	399.9	399.9	399.9	0.8	0.8	147.04	0.7	12.4	15.7	14.1	1.59	9.861 SF	
500.0	499.5	498.9	498.9	1.0	1.0	158.32	0.8	13.0	24.5	22.3	2.18	11.235	
600.0	598.4	595.7	595.6	1.3	1.2	162.58	1.2	18.0	42.5	39.8	2.76	15.409	
700.0	697.1	690.3	689.7	1.6	1.4	162.73	2.0	27.5	66.8	63.6	3.20	20.857	
800.0	795.8	784.4	782.8	2.0	1.7	161.56	3.1	41.1	94.8	91.2	3.67	25.874	
900.0	894.5	880.2	877.4	2.3	2.0	160.75	4.3	55.8	123.6	119.5	4.12	30.017	
1,000.0	993.2	975.9	972.0	2.7	2.3	160.24	5.5	70.4	152.5	147.9	4.59	33.238	
1,100.0	1,091.9	1,071.7	1,066.6	3.1	2.6	159.90	6.8	85.1	181.3	176.2	5.07	35.784	

Cathedral Energy Services

Anticollision Report

Company:	Caerus Oil & Gas (NAD 27)	Local Co-ordinate Reference:	Well PUCKETT 43C-2
Project:	Garfield County, CO	TVD Reference:	KB=22' @ 8446.0usft
Reference Site:	S2-T7S-R97W (Puckett Pad P2)	MD Reference:	KB=22' @ 8446.0usft
Site Error:	0.0usft	North Reference:	True
Reference Well:	PUCKETT 43C-2	Survey Calculation Method:	Minimum Curvature
Well Error:	0.0usft	Output errors are at	2.00 sigma
Reference Wellbore	DD	Database:	USA EDM 5000 Multi Users DB
Reference Design:	Plan #1	Offset TVD Reference:	Offset Datum

Offset Design S2-T7S-R97W (Puckett Pad P2) - PUCKETT 14B-1 - DD - Plan #1													Offset Site Error: 0.0 usft	
Survey Program: 0-ISCSWA MWD													Offset Well Error: 0.0 usft	
Reference		Offset		Semi Major Axis			Distance							
Measured Depth (usft)	Vertical Depth (usft)	Measured Depth (usft)	Vertical Depth (usft)	Reference (usft)	Offset (usft)	Highside Toolface (°)	Offset Wellbore Centre +N/-S (usft)	+E/-W (usft)	Between Centres (usft)	Between Ellipses (usft)	Total Uncertainty Axis	Separation Factor	Warning	
0.0	0.0	0.0	0.0	0.0	0.0	158.81	-12.4	4.8	13.3					
100.0	100.0	100.0	100.0	0.1	0.1	158.81	-12.4	4.8	13.3	13.1	0.18	75.731		
200.0	200.0	200.0	200.0	0.3	0.3	158.81	-12.4	4.8	13.3	12.7	0.62	21.248 CC		
255.6	255.6	255.6	255.6	0.4	0.4	-151.44	-12.4	4.8	13.5	12.6	0.88	15.359		
300.0	300.0	300.0	300.0	0.5	0.5	-151.36	-12.4	4.8	13.4	12.3	1.08	12.449 ES		
400.0	399.9	399.9	399.9	0.8	0.8	-157.68	-12.4	4.8	17.0	15.4	1.61	10.557 SF		
500.0	499.5	498.5	498.4	1.0	1.0	-169.11	-12.8	7.3	27.5	25.3	2.20	12.501		
600.0	598.4	594.7	594.3	1.3	1.2	-178.29	-14.0	14.6	47.9	45.1	2.80	17.086		
700.0	697.1	688.2	687.1	1.6	1.4	176.30	-15.9	26.2	74.8	71.6	3.24	23.105		
800.0	795.8	782.9	780.6	2.0	1.7	172.98	-18.2	40.9	104.8	101.1	3.68	28.463		
900.0	894.5	878.2	874.7	2.3	2.0	171.12	-20.7	55.8	135.0	130.9	4.13	32.727		
1,000.0	993.2	973.4	968.8	2.7	2.4	169.94	-23.1	70.6	165.3	160.8	4.58	36.097		
1,100.0	1,091.9	1,068.7	1,062.8	3.1	2.7	169.12	-25.5	85.5	195.7	190.7	5.05	38.786		

Cathedral Energy Services

Anticollision Report

Company:	Caerus Oil & Gas (NAD 27)	Local Co-ordinate Reference:	Well PUCKETT 43C-2
Project:	Garfield County, CO	TVD Reference:	KB=22' @ 8446.0usft
Reference Site:	S2-T7S-R97W (Puckett Pad P2)	MD Reference:	KB=22' @ 8446.0usft
Site Error:	0.0usft	North Reference:	True
Reference Well:	PUCKETT 43C-2	Survey Calculation Method:	Minimum Curvature
Well Error:	0.0usft	Output errors are at	2.00 sigma
Reference Wellbore	DD	Database:	USA EDM 5000 Multi Users DB
Reference Design:	Plan #1	Offset TVD Reference:	Offset Datum

Offset Design S2-T7S-R97W (Puckett Pad P2) - PUCKETT 14C-1 - DD - Plan #1													Offset Site Error:	0.0 usft
Survey Program: 0-ISCSWA MWD													Offset Well Error:	0.0 usft
Reference		Offset		Semi Major Axis			Distance							Warning
Measured Depth (usft)	Vertical Depth (usft)	Measured Depth (usft)	Vertical Depth (usft)	Reference (usft)	Offset (usft)	Highside Toolface (°)	Offset Wellbore Centre +N/-S (usft)	+E/-W (usft)	Between Centres (usft)	Between Ellipses (usft)	Total Uncertainty Axis	Separation Factor		
0.0	0.0	0.0	0.0	0.0	0.0	-171.54	-26.6	-4.0	26.9					
100.0	100.0	100.0	100.0	0.1	0.1	-171.54	-26.6	-4.0	26.9	26.7	0.18	153.301		
200.0	200.0	200.0	200.0	0.3	0.3	-171.54	-26.6	-4.0	26.9	26.3	0.62	43.013 CC		
255.6	255.6	255.6	255.6	0.4	0.4	-121.74	-26.6	-4.0	27.0	26.1	0.87	30.840		
300.0	300.0	300.0	300.0	0.5	0.5	-121.67	-26.6	-4.0	27.0	25.9	1.07	25.082 ES		
400.0	399.9	399.6	399.6	0.8	0.8	-129.33	-26.8	-3.4	29.4	27.9	1.56	18.925		
500.0	499.5	497.7	497.6	1.0	1.0	-146.66	-28.7	1.3	39.0	36.8	2.14	18.195 SF		
600.0	598.4	593.0	592.3	1.3	1.2	-161.52	-32.4	10.4	59.4	56.6	2.79	21.285		
700.0	697.1	685.8	684.1	1.6	1.5	-170.41	-37.6	23.3	87.7	84.5	3.27	26.828		
800.0	795.8	780.5	777.5	2.0	1.8	-175.39	-43.5	38.0	118.6	114.9	3.71	31.961		
900.0	894.5	875.2	870.9	2.3	2.1	-178.31	-49.4	52.6	150.0	145.9	4.15	36.126		
1,000.0	993.2	970.0	964.3	2.7	2.5	179.78	-55.3	67.3	181.6	177.0	4.60	39.451		

Cathedral Energy Services

Anticollision Report

Company:	Caerus Oil & Gas (NAD 27)	Local Co-ordinate Reference:	Well PUCKETT 43C-2
Project:	Garfield County, CO	TVD Reference:	KB=22' @ 8446.0usft
Reference Site:	S2-T7S-R97W (Puckett Pad P2)	MD Reference:	KB=22' @ 8446.0usft
Site Error:	0.0usft	North Reference:	True
Reference Well:	PUCKETT 43C-2	Survey Calculation Method:	Minimum Curvature
Well Error:	0.0usft	Output errors are at	2.00 sigma
Reference Wellbore	DD	Database:	USA EDM 5000 Multi Users DB
Reference Design:	Plan #1	Offset TVD Reference:	Offset Datum

Offset Design S2-T7S-R97W (Puckett Pad P2) - PUCKETT 14D-1 - DD - Plan #1													Offset Site Error:	0.0 usft
Survey Program: 0-ISCSWA MWD													Offset Well Error:	0.0 usft
Reference		Offset		Semi Major Axis			Distance						Warning	
Measured Depth (usft)	Vertical Depth (usft)	Measured Depth (usft)	Vertical Depth (usft)	Reference (usft)	Offset (usft)	Highside Toolface (°)	Offset Wellbore Centre +N/-S (usft)	+E/-W (usft)	Between Centres (usft)	Between Ellipses (usft)	Total Uncertainty Axis	Separation Factor		
0.0	0.0	0.0	0.0	0.0	0.0	-163.65	-40.4	-11.9	42.1					
100.0	100.0	100.0	100.0	0.1	0.1	-163.65	-40.4	-11.9	42.1	42.0	0.18	240.295		
200.0	200.0	200.0	200.0	0.3	0.3	-163.65	-40.4	-11.9	42.1	41.5	0.62	67.421 CC		
255.6	255.6	255.6	255.6	0.4	0.4	-113.73	-40.4	-11.9	42.2	41.3	0.87	48.260		
300.0	300.0	300.0	300.0	0.5	0.5	-113.69	-40.4	-11.9	42.2	41.1	1.07	39.277 ES		
400.0	399.9	398.9	398.8	0.8	0.7	-121.21	-41.9	-9.8	45.1	43.5	1.53	29.361		
500.0	499.5	496.0	495.6	1.0	1.0	-135.99	-46.3	-3.7	55.3	53.2	2.11	26.190 SF		
600.0	598.4	589.8	588.7	1.3	1.2	-149.74	-53.4	5.9	76.6	73.8	2.77	27.595		
700.0	697.1	680.7	678.1	1.6	1.5	-158.92	-62.7	18.7	106.4	103.1	3.29	32.334		
800.0	795.8	774.3	770.0	2.0	1.9	-164.55	-73.4	33.4	139.5	135.8	3.76	37.142		
900.0	894.5	868.0	861.9	2.3	2.2	-168.03	-84.2	48.2	173.4	169.2	4.20	41.242		

Cathedral Energy Services

Anticollision Report

Company:	Caerus Oil & Gas (NAD 27)	Local Co-ordinate Reference:	Well PUCKETT 43C-2
Project:	Garfield County, CO	TVD Reference:	KB=22' @ 8446.0usft
Reference Site:	S2-T7S-R97W (Puckett Pad P2)	MD Reference:	KB=22' @ 8446.0usft
Site Error:	0.0usft	North Reference:	True
Reference Well:	PUCKETT 43C-2	Survey Calculation Method:	Minimum Curvature
Well Error:	0.0usft	Output errors are at	2.00 sigma
Reference Wellbore	DD	Database:	USA EDM 5000 Multi Users DB
Reference Design:	Plan #1	Offset TVD Reference:	Offset Datum

Offset Design S2-T7S-R97W (Puckett Pad P2) - PUCKETT 24A-1 - DD - Plan #1													Offset Site Error:	0.0 usft
Survey Program: 0-ISCSWA MWD													Offset Well Error:	0.0 usft
Reference		Offset		Semi Major Axis			Distance							Warning
Measured Depth (usft)	Vertical Depth (usft)	Measured Depth (usft)	Vertical Depth (usft)	Reference (usft)	Offset (usft)	Highside Toolface (°)	Offset Wellbore Centre +N/-S (usft)	+E/-W (usft)	Between Centres (usft)	Between Ellipses (usft)	Total Uncertainty Axis	Separation Factor		
0.0	0.0	0.0	0.0	0.0	0.0	120.23	-5.1	8.8	10.1					
100.0	100.0	100.0	100.0	0.1	0.1	120.23	-5.1	8.8	10.1	10.0	0.18	57.774		
200.0	200.0	200.0	200.0	0.3	0.3	120.23	-5.1	8.8	10.1	9.5	0.62	16.210	CC	
255.6	255.6	255.6	255.6	0.4	0.4	170.58	-5.1	8.8	10.3	9.5	0.88	11.786		
300.0	300.0	300.0	300.0	0.5	0.5	170.55	-5.1	8.8	10.3	9.2	1.08	9.535	ES, SF	
400.0	399.9	399.2	399.1	0.8	0.8	168.90	-5.3	11.3	16.5	14.9	1.62	10.213		
500.0	499.5	496.7	496.4	1.0	1.0	166.43	-6.0	18.8	32.6	30.3	2.23	14.623		
600.0	598.4	591.5	590.3	1.3	1.2	164.70	-6.7	30.9	58.0	55.2	2.83	20.513		
700.0	697.1	683.3	680.7	1.6	1.5	162.99	-7.1	46.9	89.3	86.1	3.28	27.267		
800.0	795.8	772.3	767.5	2.0	1.9	161.25	-7.2	66.7	124.7	121.0	3.75	33.286		
900.0	894.5	858.2	850.3	2.3	2.3	159.66	-7.0	89.5	164.1	159.8	4.23	38.747		

Cathedral Energy Services

Anticollision Report

Company:	Caerus Oil & Gas (NAD 27)	Local Co-ordinate Reference:	Well PUCKETT 43C-2
Project:	Garfield County, CO	TVD Reference:	KB=22' @ 8446.0usft
Reference Site:	S2-T7S-R97W (Puckett Pad P2)	MD Reference:	KB=22' @ 8446.0usft
Site Error:	0.0usft	North Reference:	True
Reference Well:	PUCKETT 43C-2	Survey Calculation Method:	Minimum Curvature
Well Error:	0.0usft	Output errors are at	2.00 sigma
Reference Wellbore	DD	Database:	USA EDM 5000 Multi Users DB
Reference Design:	Plan #1	Offset TVD Reference:	Offset Datum

Offset Design												Offset Site Error:	0.0 usft
S2-T7S-R97W (Puckett Pad P2) - PUCKETT 24C-1 - DD - Plan #1												Offset Well Error:	0.0 usft
Survey Program: 0-ISCSWA MWD													
Reference		Offset		Semi Major Axis		Distance							
Measured Depth (usft)	Vertical Depth (usft)	Measured Depth (usft)	Vertical Depth (usft)	Reference (usft)	Offset (usft)	Highside Toolface (°)	Offset Wellbore Centre +N/-S (usft)	+E/-W (usft)	Between Centres (usft)	Between Ellipses (usft)	Total Uncertainty Axis	Separation Factor	Warning
0.0	0.0	0.0	0.0	0.0	0.0	-180.00	-19.3	0.0	19.3				
100.0	100.0	100.0	100.0	0.1	0.1	-180.00	-19.3	0.0	19.3	19.1	0.18	110.084	
200.0	200.0	200.0	200.0	0.3	0.3	-180.00	-19.3	0.0	19.3	18.7	0.62	30.887 CC	
243.6	243.6	243.6	243.6	0.4	0.4	-130.11	-19.3	0.0	19.4	18.6	0.82	23.608	
300.0	300.0	299.9	299.9	0.5	0.5	-132.04	-19.5	0.6	19.6	18.5	1.07	18.321 ES	
400.0	399.9	399.0	398.8	0.8	0.7	-150.33	-20.7	5.6	24.9	23.3	1.59	15.666 SF	
500.0	499.5	496.0	495.3	1.0	1.0	-168.57	-23.1	15.4	40.8	38.6	2.25	18.166	
600.0	598.4	589.5	587.8	1.3	1.3	-178.54	-26.5	29.2	67.8	64.9	2.88	23.547	
700.0	697.1	679.7	676.1	1.6	1.6	176.22	-30.8	46.7	101.7	98.4	3.33	30.513	
800.0	795.8	766.6	760.4	2.0	2.0	173.01	-35.9	67.4	140.1	136.3	3.80	36.878	
900.0	894.5	850.2	840.4	2.3	2.5	170.80	-41.7	90.8	182.6	178.4	4.27	42.737	

Cathedral Energy Services

Anticollision Report

Company:	Caerus Oil & Gas (NAD 27)	Local Co-ordinate Reference:	Well PUCKETT 43C-2
Project:	Garfield County, CO	TVD Reference:	KB=22' @ 8446.0usft
Reference Site:	S2-T7S-R97W (Puckett Pad P2)	MD Reference:	KB=22' @ 8446.0usft
Site Error:	0.0usft	North Reference:	True
Reference Well:	PUCKETT 43C-2	Survey Calculation Method:	Minimum Curvature
Well Error:	0.0usft	Output errors are at	2.00 sigma
Reference Wellbore	DD	Database:	USA EDM 5000 Multi Users DB
Reference Design:	Plan #1	Offset TVD Reference:	Offset Datum

Offset Design S2-T7S-R97W (Puckett Pad P2) - PUCKETT 24D-1 - DD - Plan #1													Offset Site Error:	0.0 usft
Survey Program: 0-ISCSWA MWD													Offset Well Error:	0.0 usft
Reference		Offset		Semi Major Axis			Distance						Warning	
Measured Depth (usft)	Vertical Depth (usft)	Measured Depth (usft)	Vertical Depth (usft)	Reference (usft)	Offset (usft)	Highside Toolface (°)	Offset Wellbore Centre +N/-S (usft)	+E/-W (usft)	Between Centres (usft)	Between Ellipses (usft)	Total Uncertainty Axis	Separation Factor		
0.0	0.0	0.0	0.0	0.0	0.0	-166.73	-33.5	-7.9	34.4					
100.0	100.0	100.0	100.0	0.1	0.1	-166.73	-33.5	-7.9	34.4	34.2	0.18	196.354		
200.0	200.0	200.0	200.0	0.3	0.3	-166.73	-33.5	-7.9	34.4	33.8	0.62	55.092 CC		
213.0	213.0	213.0	213.0	0.3	0.3	-116.64	-33.5	-7.9	34.4	33.8	0.68	50.517 ES		
300.0	300.0	299.7	299.6	0.5	0.5	-121.02	-34.4	-5.5	34.9	33.9	1.06	32.900		
400.0	399.9	398.3	398.0	0.8	0.8	-136.62	-37.1	1.7	40.1	38.5	1.58	25.382		
500.0	499.5	494.5	493.3	1.0	1.0	-154.49	-41.5	13.3	55.6	53.3	2.25	24.738 SF		
600.0	598.4	586.8	584.2	1.3	1.4	-166.76	-47.3	28.6	83.0	80.1	2.91	28.515		
700.0	697.1	675.4	670.5	1.6	1.8	-173.98	-54.3	47.2	118.3	114.9	3.39	34.912		
800.0	795.8	760.7	752.7	2.0	2.2	-178.41	-62.4	68.5	158.5	154.6	3.86	41.056		

Cathedral Energy Services

Anticollision Report

Company:	Caerus Oil & Gas (NAD 27)	Local Co-ordinate Reference:	Well PUCKETT 43C-2
Project:	Garfield County, CO	TVD Reference:	KB=22' @ 8446.0usft
Reference Site:	S2-T7S-R97W (Puckett Pad P2)	MD Reference:	KB=22' @ 8446.0usft
Site Error:	0.0usft	North Reference:	True
Reference Well:	PUCKETT 43C-2	Survey Calculation Method:	Minimum Curvature
Well Error:	0.0usft	Output errors are at	2.00 sigma
Reference Wellbore	DD	Database:	USA EDM 5000 Multi Users DB
Reference Design:	Plan #1	Offset TVD Reference:	Offset Datum

Offset Design S2-T7S-R97W (Puckett Pad P2) - PUCKETT 43D-2 - DD - Plan #1													Offset Site Error:	0.0 usft
Survey Program: 0-ISCSWA MWD													Offset Well Error:	0.0 usft
Reference		Offset		Semi Major Axis		Highside Toolface (°)	Distance		Total Uncertainty Axis	Separation Factor	Warning			
Measured Depth (usft)	Vertical Depth (usft)	Measured Depth (usft)	Vertical Depth (usft)	Reference (usft)	Offset (usft)		Offset Wellbore Centre +N/-S (usft)	+E/-W (usft)						
0.0	0.0	0.0	0.0	0.0	0.0	-151.50	-7.3	-4.0	8.3					
100.0	100.0	100.0	100.0	0.1	0.1	-151.50	-7.3	-4.0	8.3	8.1	0.18	47.250		
200.0	200.0	200.0	200.0	0.3	0.3	-151.50	-7.3	-4.0	8.3	7.7	0.62	13.257 CC		
256.2	256.2	256.2	256.2	0.4	0.4	-102.73	-7.3	-4.0	8.3	7.4	0.88	9.495		
300.0	300.0	300.0	300.0	0.5	0.5	-102.44	-7.3	-4.0	8.3	7.2	1.07	7.748 ES		
400.0	399.9	400.0	400.0	0.8	0.8	-116.77	-6.7	-5.3	9.5	8.0	1.54	6.198		
500.0	499.5	500.1	499.9	1.0	1.0	-124.86	-3.9	-11.2	12.5	10.4	2.06	6.042 SF		
600.0	598.4	600.2	599.3	1.3	1.3	-127.23	1.0	-21.9	16.7	14.1	2.64	6.323		
700.0	697.1	700.1	698.3	1.6	1.5	-127.91	6.6	-34.3	21.4	18.2	3.22	6.643		
800.0	795.8	800.0	797.2	2.0	1.9	-128.35	12.3	-46.7	26.1	22.2	3.83	6.816		
900.0	894.5	899.9	896.2	2.3	2.2	-128.65	18.0	-59.0	30.8	26.3	4.45	6.917		
1,000.0	993.2	999.8	995.1	2.7	2.5	-128.88	23.7	-71.4	35.4	30.4	5.08	6.979		
1,100.0	1,091.9	1,099.7	1,094.1	3.1	2.8	-129.05	29.3	-83.8	40.1	34.4	5.72	7.018		
1,200.0	1,190.6	1,199.6	1,193.1	3.4	3.2	-129.18	35.0	-96.2	44.8	38.4	6.36	7.045		
1,300.0	1,289.2	1,299.5	1,292.0	3.8	3.5	-129.29	40.7	-108.5	49.5	42.5	7.01	7.062		
1,400.0	1,387.9	1,399.4	1,391.0	4.2	3.8	-129.38	46.4	-120.9	54.2	46.5	7.66	7.075		
1,500.0	1,486.6	1,499.3	1,489.9	4.5	4.2	-129.46	52.1	-133.3	58.8	50.5	8.31	7.084		
1,600.0	1,585.3	1,599.2	1,588.9	4.9	4.5	-129.52	57.7	-145.7	63.5	54.6	8.96	7.090		
1,700.0	1,684.0	1,699.0	1,687.8	5.3	4.8	-129.58	63.4	-158.0	68.2	58.6	9.61	7.095		
1,800.0	1,782.7	1,798.9	1,786.8	5.7	5.2	-129.63	69.1	-170.4	72.9	62.6	10.27	7.098		
1,900.0	1,881.3	1,898.8	1,885.8	6.0	5.5	-129.67	74.8	-182.8	77.6	66.7	10.93	7.101		
2,000.0	1,980.0	1,998.7	1,984.7	6.4	5.8	-129.71	80.5	-195.2	82.3	70.7	11.58	7.103		
2,100.0	2,078.7	2,098.6	2,083.7	6.8	6.2	-129.74	86.1	-207.5	86.9	74.7	12.24	7.104		
2,200.0	2,177.4	2,198.5	2,182.6	7.2	6.5	-129.77	91.8	-219.9	91.6	78.7	12.90	7.105		
2,300.0	2,276.1	2,298.4	2,281.6	7.5	6.8	-129.80	97.5	-232.3	96.3	82.8	13.55	7.106		
2,400.0	2,374.8	2,398.3	2,380.5	7.9	7.2	-129.83	103.2	-244.7	101.0	86.8	14.21	7.107		
2,500.0	2,473.5	2,498.2	2,479.5	8.3	7.5	-129.85	108.8	-257.0	105.7	90.8	14.87	7.107		
2,600.0	2,572.1	2,598.1	2,578.5	8.6	7.9	-129.87	114.5	-269.4	110.4	94.8	15.53	7.108		
2,700.0	2,670.8	2,697.9	2,677.4	9.0	8.2	-129.89	120.2	-281.8	115.0	98.9	16.19	7.108		
2,800.0	2,769.5	2,797.8	2,776.4	9.4	8.5	-129.91	125.9	-294.2	119.7	102.9	16.84	7.108		
2,900.0	2,868.2	2,897.7	2,875.3	9.8	8.9	-129.92	131.6	-306.5	124.4	106.9	17.50	7.108		
3,000.0	2,966.9	2,997.6	2,974.3	10.1	9.2	-129.94	137.2	-318.9	129.1	110.9	18.16	7.108		
3,100.0	3,065.6	3,097.5	3,073.3	10.5	9.5	-129.95	142.9	-331.3	133.8	115.0	18.82	7.108		
3,200.0	3,164.3	3,197.4	3,172.2	10.9	9.9	-129.97	148.6	-343.7	138.5	119.0	19.48	7.109		
3,300.0	3,262.9	3,297.3	3,271.2	11.3	10.2	-129.98	154.3	-356.0	143.1	123.0	20.14	7.109		
3,400.0	3,361.6	3,397.2	3,370.1	11.6	10.6	-129.99	159.9	-368.4	147.8	127.0	20.79	7.109		
3,500.0	3,460.3	3,497.1	3,469.1	12.0	10.9	-130.00	165.6	-380.8	152.5	131.1	21.45	7.109		
3,600.0	3,559.0	3,597.0	3,568.0	12.4	11.2	-130.01	171.3	-393.2	157.2	135.1	22.11	7.109		
3,700.0	3,657.7	3,696.8	3,667.0	12.8	11.6	-130.02	177.0	-405.5	161.9	139.1	22.77	7.109		
3,800.0	3,756.4	3,796.7	3,766.0	13.1	11.9	-130.03	182.7	-417.9	166.6	143.1	23.43	7.109		
3,900.0	3,855.0	3,896.6	3,864.9	13.5	12.3	-130.04	188.3	-430.3	171.2	147.2	24.09	7.109		
4,000.0	3,953.7	3,996.5	3,963.9	13.9	12.6	-130.05	194.0	-442.7	175.9	151.2	24.75	7.109		
4,100.0	4,052.4	4,096.4	4,062.8	14.3	12.9	-130.05	199.7	-455.0	180.6	155.2	25.40	7.110		
4,200.0	4,151.1	4,196.3	4,161.8	14.6	13.3	-130.06	205.4	-467.4	185.3	159.2	26.06	7.110		
4,300.0	4,249.8	4,296.2	4,260.8	15.0	13.6	-130.07	211.1	-479.8	190.0	163.3	26.72	7.110		
4,400.0	4,348.5	4,396.1	4,359.7	15.4	13.9	-130.07	216.7	-492.2	194.7	167.3	27.38	7.110		
4,500.0	4,447.2	4,496.0	4,458.7	15.8	14.3	-130.08	222.4	-504.5	199.3	171.3	28.04	7.110		

Cathedral Energy Services

Anticollision Report

Company:	Caerus Oil & Gas (NAD 27)	Local Co-ordinate Reference:	Well PUCKETT 43C-2
Project:	Garfield County, CO	TVD Reference:	KB=22' @ 8446.0usft
Reference Site:	S2-T7S-R97W (Puckett Pad P2)	MD Reference:	KB=22' @ 8446.0usft
Site Error:	0.0usft	North Reference:	True
Reference Well:	PUCKETT 43C-2	Survey Calculation Method:	Minimum Curvature
Well Error:	0.0usft	Output errors are at	2.00 sigma
Reference Wellbore	DD	Database:	USA EDM 5000 Multi Users DB
Reference Design:	Plan #1	Offset TVD Reference:	Offset Datum

Offset Design S2-T7S-R97W (Puckett Pad P2) - PUCKETT 44A-2 - DD - Plan #1													Offset Site Error:	0.0 usft
Survey Program: 0-ISCSWA MWD													Offset Well Error:	0.0 usft
Reference		Offset		Semi Major Axis			Distance					Separation Factor	Warning	
Measured Depth (usft)	Vertical Depth (usft)	Measured Depth (usft)	Vertical Depth (usft)	Reference (usft)	Offset (usft)	Highside Toolface (°)	Offset Wellbore Centre +N/-S (usft)	+E/-W (usft)	Between Centres (usft)	Between Ellipses (usft)	Total Uncertainty Axis			
0.0	0.0	0.0	0.0	0.0	0.0	-150.91	-14.2	-7.9	16.3					
100.0	100.0	100.0	100.0	0.1	0.1	-150.91	-14.2	-7.9	16.3	16.1	0.18	92.725		
200.0	200.0	200.0	200.0	0.3	0.3	-150.91	-14.2	-7.9	16.3	15.6	0.62	26.016 CC		
255.9	255.9	255.9	255.9	0.4	0.4	-101.44	-14.2	-7.9	16.3	15.4	0.88	18.609		
300.0	300.0	300.0	300.0	0.5	0.5	-101.30	-14.2	-7.9	16.3	15.2	1.07	15.173 ES		
400.0	399.9	399.9	399.9	0.8	0.8	-113.45	-14.2	-8.1	17.5	16.0	1.54	11.407		
500.0	499.5	499.6	499.5	1.0	1.0	-125.07	-13.9	-12.0	22.4	20.4	2.06	10.905 SF		
600.0	598.4	599.3	598.7	1.3	1.2	-129.75	-13.2	-21.0	30.8	28.2	2.64	11.692		
700.0	697.1	698.8	697.5	1.6	1.5	-129.88	-12.3	-33.3	40.2	37.1	3.19	12.612		
800.0	795.8	798.4	796.3	2.0	1.8	-129.89	-11.3	-45.7	49.7	45.9	3.78	13.131		
900.0	894.5	897.9	895.1	2.3	2.1	-129.91	-10.4	-58.0	59.1	54.7	4.39	13.446		
1,000.0	993.2	997.5	993.9	2.7	2.4	-129.92	-9.4	-70.3	68.5	63.4	5.02	13.646		
1,100.0	1,091.9	1,097.1	1,092.7	3.1	2.7	-129.92	-8.5	-82.7	77.9	72.2	5.65	13.781		
1,200.0	1,190.6	1,196.6	1,191.5	3.4	3.0	-129.93	-7.5	-95.0	87.3	81.0	6.29	13.875		
1,300.0	1,289.2	1,296.2	1,290.2	3.8	3.3	-129.93	-6.6	-107.4	96.7	89.8	6.93	13.943		
1,400.0	1,387.9	1,395.7	1,389.0	4.2	3.6	-129.93	-5.6	-119.7	106.1	98.5	7.58	13.993		
1,500.0	1,486.6	1,495.3	1,487.8	4.5	3.9	-129.94	-4.7	-132.0	115.5	107.3	8.23	14.032		
1,600.0	1,585.3	1,594.8	1,586.6	4.9	4.3	-129.94	-3.7	-144.4	124.9	116.0	8.88	14.062		
1,700.0	1,684.0	1,694.4	1,685.4	5.3	4.6	-129.94	-2.8	-156.7	134.3	124.8	9.54	14.086		
1,800.0	1,782.7	1,793.9	1,784.2	5.7	4.9	-129.94	-1.8	-169.1	143.7	133.5	10.19	14.105		
1,900.0	1,881.3	1,893.5	1,883.0	6.0	5.2	-129.95	-0.9	-181.4	153.1	142.3	10.84	14.121		
2,000.0	1,980.0	1,993.1	1,981.7	6.4	5.5	-129.95	0.1	-193.7	162.5	151.0	11.50	14.134		
2,100.0	2,078.7	2,092.6	2,080.5	6.8	5.9	-129.95	1.0	-206.1	171.9	159.8	12.16	14.145		
2,200.0	2,177.4	2,192.2	2,179.3	7.2	6.2	-129.95	1.9	-218.4	181.4	168.5	12.81	14.155		
2,300.0	2,276.1	2,291.7	2,278.1	7.5	6.5	-129.95	2.9	-230.8	190.8	177.3	13.47	14.163		

Cathedral Energy Services

Anticollision Report

Company:	Caerus Oil & Gas (NAD 27)	Local Co-ordinate Reference:	Well PUCKETT 43C-2
Project:	Garfield County, CO	TVD Reference:	KB=22' @ 8446.0usft
Reference Site:	S2-T7S-R97W (Puckett Pad P2)	MD Reference:	KB=22' @ 8446.0usft
Site Error:	0.0usft	North Reference:	True
Reference Well:	PUCKETT 43C-2	Survey Calculation Method:	Minimum Curvature
Well Error:	0.0usft	Output errors are at	2.00 sigma
Reference Wellbore	DD	Database:	USA EDM 5000 Multi Users DB
Reference Design:	Plan #1	Offset TVD Reference:	Offset Datum

Offset Design S2-T7S-R97W (Puckett Pad P2) - PUCKETT 44B-2 - DD - Plan #1													Offset Site Error: 0.0 usft	
Survey Program: 0-ISCSWA MWD													Offset Well Error: 0.0 usft	
Reference				Offset		Semi Major Axis		Distance						Warning
Measured Depth (usft)	Vertical Depth (usft)	Measured Depth (usft)	Vertical Depth (usft)	Reference (usft)	Offset (usft)	Highside Toolface (°)	Offset Wellbore Centre +N/-S (usft)	+E/-W (usft)	Between Centres (usft)	Between Ellipses (usft)	Total Uncertainty Axis	Separation Factor		
0.0	0.0	0.0	0.0	0.0	0.0	-149.97	-21.5	-12.4	24.8					
100.0	100.0	100.0	100.0	0.1	0.1	-149.97	-21.5	-12.4	24.8	24.6	0.18	141.579		
200.0	200.0	200.0	200.0	0.3	0.3	-149.97	-21.5	-12.4	24.8	24.2	0.62	39.724 CC		
255.8	255.8	255.8	255.8	0.4	0.4	-100.26	-21.5	-12.4	24.9	24.0	0.88	28.401		
300.0	300.0	300.0	300.0	0.5	0.5	-100.17	-21.5	-12.4	24.8	23.8	1.07	23.150 ES		
400.0	399.9	399.3	399.2	0.8	0.8	-106.22	-21.9	-13.8	26.8	25.2	1.52	17.601		
500.0	499.5	498.0	497.8	1.0	1.0	-112.59	-23.8	-19.9	33.8	31.7	2.02	16.693 SF		
600.0	598.4	596.5	595.6	1.3	1.2	-117.00	-27.1	-30.7	45.8	43.2	2.61	17.535		
700.0	697.1	695.5	693.8	1.6	1.5	-120.15	-30.9	-42.8	59.7	56.5	3.21	18.609		
800.0	795.8	794.5	791.9	2.0	1.8	-122.11	-34.6	-54.9	73.6	69.8	3.82	19.273		
900.0	894.5	893.5	890.1	2.3	2.1	-123.45	-38.3	-67.0	87.6	83.1	4.44	19.705		
1,000.0	993.2	992.5	988.3	2.7	2.4	-124.41	-42.1	-79.1	101.6	96.5	5.08	20.001		
1,100.0	1,091.9	1,091.5	1,086.5	3.1	2.7	-125.15	-45.8	-91.2	115.6	109.9	5.72	20.214		
1,200.0	1,190.6	1,190.5	1,184.7	3.4	3.1	-125.72	-49.6	-103.3	129.7	123.3	6.37	20.372		
1,300.0	1,289.2	1,289.5	1,282.9	3.8	3.4	-126.18	-53.3	-115.4	143.7	136.7	7.01	20.492		
1,400.0	1,387.9	1,388.5	1,381.0	4.2	3.7	-126.56	-57.1	-127.5	157.8	150.2	7.67	20.588		
1,500.0	1,486.6	1,487.5	1,479.2	4.5	4.0	-126.88	-60.8	-139.6	171.9	163.6	8.32	20.666		
1,600.0	1,585.3	1,586.5	1,577.4	4.9	4.4	-127.15	-64.5	-151.8	186.0	177.0	8.97	20.729		

Cathedral Energy Services

Anticollision Report

Company:	Caerus Oil & Gas (NAD 27)	Local Co-ordinate Reference:	Well PUCKETT 43C-2
Project:	Garfield County, CO	TVD Reference:	KB=22' @ 8446.0usft
Reference Site:	S2-T7S-R97W (Puckett Pad P2)	MD Reference:	KB=22' @ 8446.0usft
Site Error:	0.0usft	North Reference:	True
Reference Well:	PUCKETT 43C-2	Survey Calculation Method:	Minimum Curvature
Well Error:	0.0usft	Output errors are at	2.00 sigma
Reference Wellbore	DD	Database:	USA EDM 5000 Multi Users DB
Reference Design:	Plan #1	Offset TVD Reference:	Offset Datum

Offset Design S2-T7S-R97W (Puckett Pad P2) - PUCKETT 44C-2 - DD - Plan #1													Offset Site Error:	0.0 usft
Survey Program: 0-ISWWSA MWD													Offset Well Error:	0.0 usft
Reference		Offset		Semi Major Axis		Distance		Total		Separation		Warning		
Measured Depth (usft)	Vertical Depth (usft)	Measured Depth (usft)	Vertical Depth (usft)	Reference (usft)	Offset (usft)	Highside Toolface (°)	Offset Wellbore Centre +N/-S (usft)	+E/-W (usft)	Between Centres (usft)	Between Ellipses (usft)	Uncertainty Axis			
0.0	0.0	0.0	0.0	0.0	0.0	-150.04	-28.4	-16.4	32.8					
100.0	100.0	100.0	100.0	0.1	0.1	-150.04	-28.4	-16.4	32.8	32.6	0.18	187.036		
200.0	200.0	200.0	200.0	0.3	0.3	-150.04	-28.4	-16.4	32.8	32.2	0.62	52.478 CC		
250.0	250.0	250.0	250.0	0.4	0.4	-100.15	-28.4	-16.4	32.8	32.0	0.85	38.649		
300.0	300.0	299.6	299.6	0.5	0.5	-100.03	-28.5	-16.5	33.0	31.9	1.07	30.874 ES		
400.0	399.9	397.9	397.8	0.8	0.7	-103.28	-30.7	-19.6	37.2	35.7	1.50	24.752		
500.0	499.5	495.5	495.0	1.0	1.0	-108.49	-35.7	-26.8	47.4	45.4	2.02	23.470 SF		
600.0	598.4	592.6	591.2	1.3	1.2	-113.38	-43.4	-37.7	63.6	61.0	2.63	24.210		
700.0	697.1	690.8	688.3	1.6	1.6	-117.24	-51.7	-49.6	81.8	78.5	3.23	25.333		
800.0	795.8	789.0	785.5	2.0	1.9	-119.70	-60.0	-61.5	100.1	96.3	3.84	26.046		
900.0	894.5	887.3	882.6	2.3	2.2	-121.40	-68.4	-73.4	118.6	114.1	4.47	26.512		
1,000.0	993.2	985.5	979.8	2.7	2.6	-122.63	-76.7	-85.2	137.2	132.1	5.11	26.831		
1,100.0	1,091.9	1,083.7	1,076.9	3.1	2.9	-123.57	-85.0	-97.1	155.8	150.0	5.76	27.060		
1,200.0	1,190.6	1,181.9	1,174.1	3.4	3.3	-124.32	-93.4	-109.0	174.4	168.0	6.41	27.226		
1,300.0	1,289.2	1,280.2	1,271.2	3.8	3.6	-124.91	-101.7	-120.9	193.1	186.0	7.06	27.358		

Cathedral Energy Services

Anticollision Report

Company:	Caerus Oil & Gas (NAD 27)	Local Co-ordinate Reference:	Well PUCKETT 43C-2
Project:	Garfield County, CO	TVD Reference:	KB=22' @ 8446.0usft
Reference Site:	S2-T7S-R97W (Puckett Pad P2)	MD Reference:	KB=22' @ 8446.0usft
Site Error:	0.0usft	North Reference:	True
Reference Well:	PUCKETT 43C-2	Survey Calculation Method:	Minimum Curvature
Well Error:	0.0usft	Output errors are at	2.00 sigma
Reference Wellbore	DD	Database:	USA EDM 5000 Multi Users DB
Reference Design:	Plan #1	Offset TVD Reference:	Offset Datum

Offset Design												S2-T7S-R97W (Puckett Pad P2) - PUCKETT 44D-2 - DD - Plan #1		Offset Site Error:	0.0 usft
Survey Program: 0-ISCSWA MWD														Offset Well Error:	0.0 usft
Reference		Offset		Semi Major Axis			Distance						Warning		
Measured Depth (usft)	Vertical Depth (usft)	Measured Depth (usft)	Vertical Depth (usft)	Reference (usft)	Offset (usft)	Highside Toolface (°)	Offset Wellbore Centre +N/-S (usft)	+E/-W (usft)	Between Centres (usft)	Between Ellipses (usft)	Total Uncertainty Axis	Separation Factor			
0.0	0.0	0.0	0.0	0.0	0.0	-149.57	-34.6	-20.3	40.1						
100.0	100.0	100.0	100.0	0.1	0.1	-149.57	-34.6	-20.3	40.1	40.0	0.18	228.878			
200.0	200.0	200.0	200.0	0.3	0.3	-149.57	-34.6	-20.3	40.1	39.5	0.62	64.218	CC, ES		
300.0	300.0	298.5	298.4	0.5	0.5	-99.19	-35.6	-21.3	41.6	40.5	1.06	39.237			
400.0	399.9	395.9	395.7	0.8	0.7	-101.97	-40.3	-25.5	48.5	47.0	1.51	32.076			
500.0	499.5	492.3	491.4	1.0	1.0	-107.08	-48.4	-32.9	61.8	59.7	2.04	30.288	SF		
600.0	598.4	587.5	585.4	1.3	1.3	-112.17	-59.9	-43.3	81.7	79.0	2.66	30.753			
700.0	697.1	684.8	681.0	1.6	1.7	-116.19	-72.7	-55.0	104.2	100.9	3.26	31.979			
800.0	795.8	782.0	776.7	2.0	2.0	-118.77	-85.5	-66.7	127.0	123.1	3.87	32.787			
900.0	894.5	879.2	872.4	2.3	2.4	-120.57	-98.3	-78.3	150.0	145.5	4.50	33.306			
1,000.0	993.2	976.5	968.1	2.7	2.8	-121.89	-111.1	-90.0	173.0	167.9	5.14	33.654			
1,100.0	1,091.9	1,073.7	1,063.8	3.1	3.2	-122.90	-123.9	-101.6	196.2	190.4	5.79	33.900			

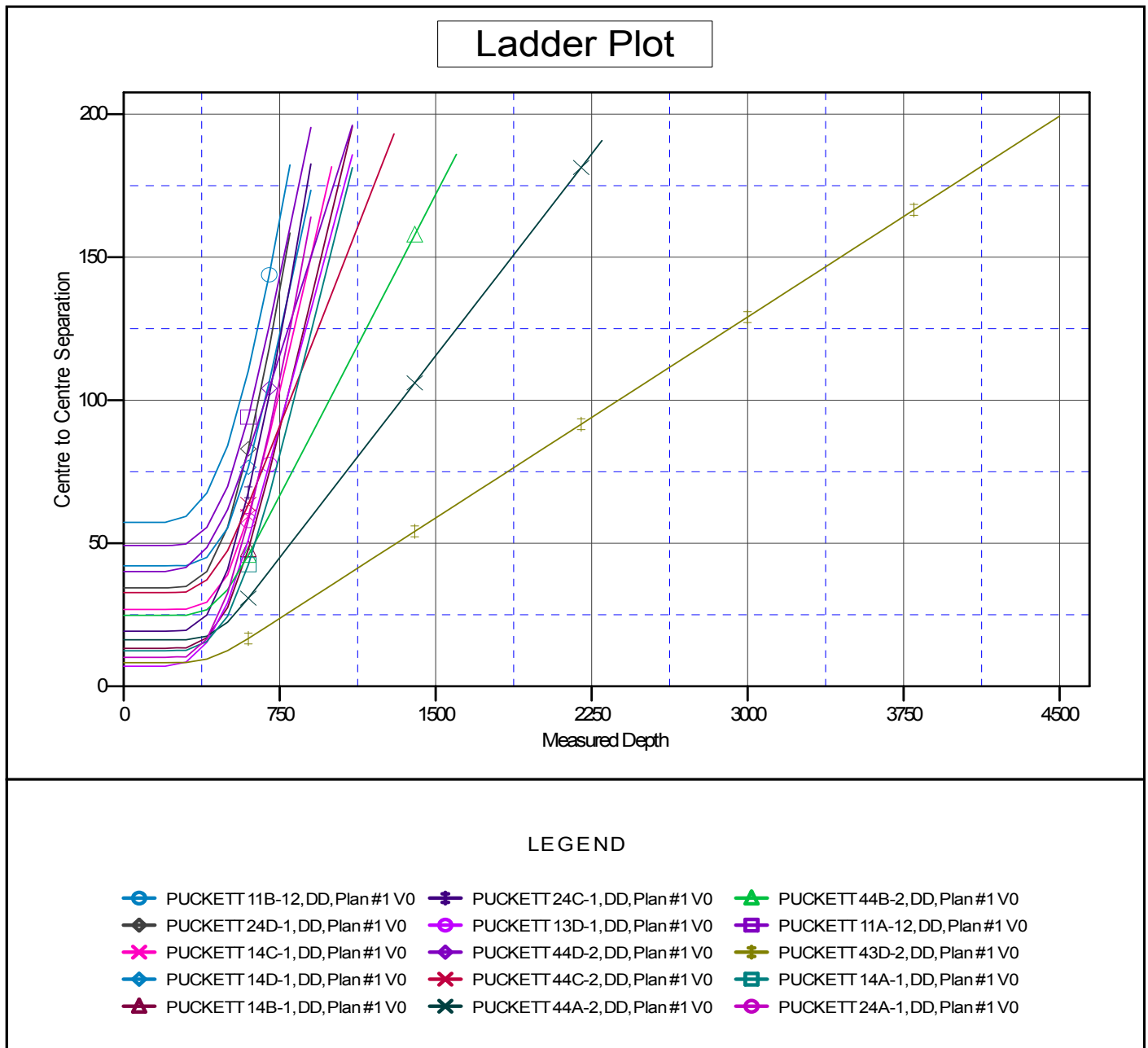
Cathedral Energy Services

Anticollision Report

Company:	Caerus Oil & Gas (NAD 27)	Local Co-ordinate Reference:	Well PUCKETT 43C-2
Project:	Garfield County, CO	TVD Reference:	KB=22' @ 8446.0usft
Reference Site:	S2-T7S-R97W (Puckett Pad P2)	MD Reference:	KB=22' @ 8446.0usft
Site Error:	0.0usft	North Reference:	True
Reference Well:	PUCKETT 43C-2	Survey Calculation Method:	Minimum Curvature
Well Error:	0.0usft	Output errors are at	2.00 sigma
Reference Wellbore	DD	Database:	USA EDM 5000 Multi Users DB
Reference Design:	Plan #1	Offset TVD Reference:	Offset Datum

Reference Depths are relative to KB=22' @ 8446.0usft
Offset Depths are relative to Offset Datum
Central Meridian is -105.500000 °

Coordinates are relative to: PUCKETT 43C-2
Coordinate System is US State Plane 1927 (Exact solution), Colorado Central 502
Grid Convergence at Surface is: -1.69°



CC - Min centre to center distance or convergent point, SF - min separation factor, ES - min ellipse separation