



Cement Bond  
Gamma Ray / CCL Log

<<< Fold Here >>>



All interpretations are opinions based on inferences from electrical or other measurements and we cannot and do not guarantee the accuracy or correctness of any interpretation, and we shall not, except in the case of gross or willful negligence on our part, be liable or responsible for any loss, costs, damages, or expenses incurred or sustained by anyone resulting from any interpretation made by any of our officers, agents or employees. These interpretations are also subject to our general terms and conditions set out in our current Price Schedule.

Log Correlated to Schlumberger Platform Express Log  
Dated 23-Dec-2005

Estimated top of cement for 4.5' liner is 5662 FT.

Thanks for Choosing Weatherford.

Crew: R. Wells, Doug Petty

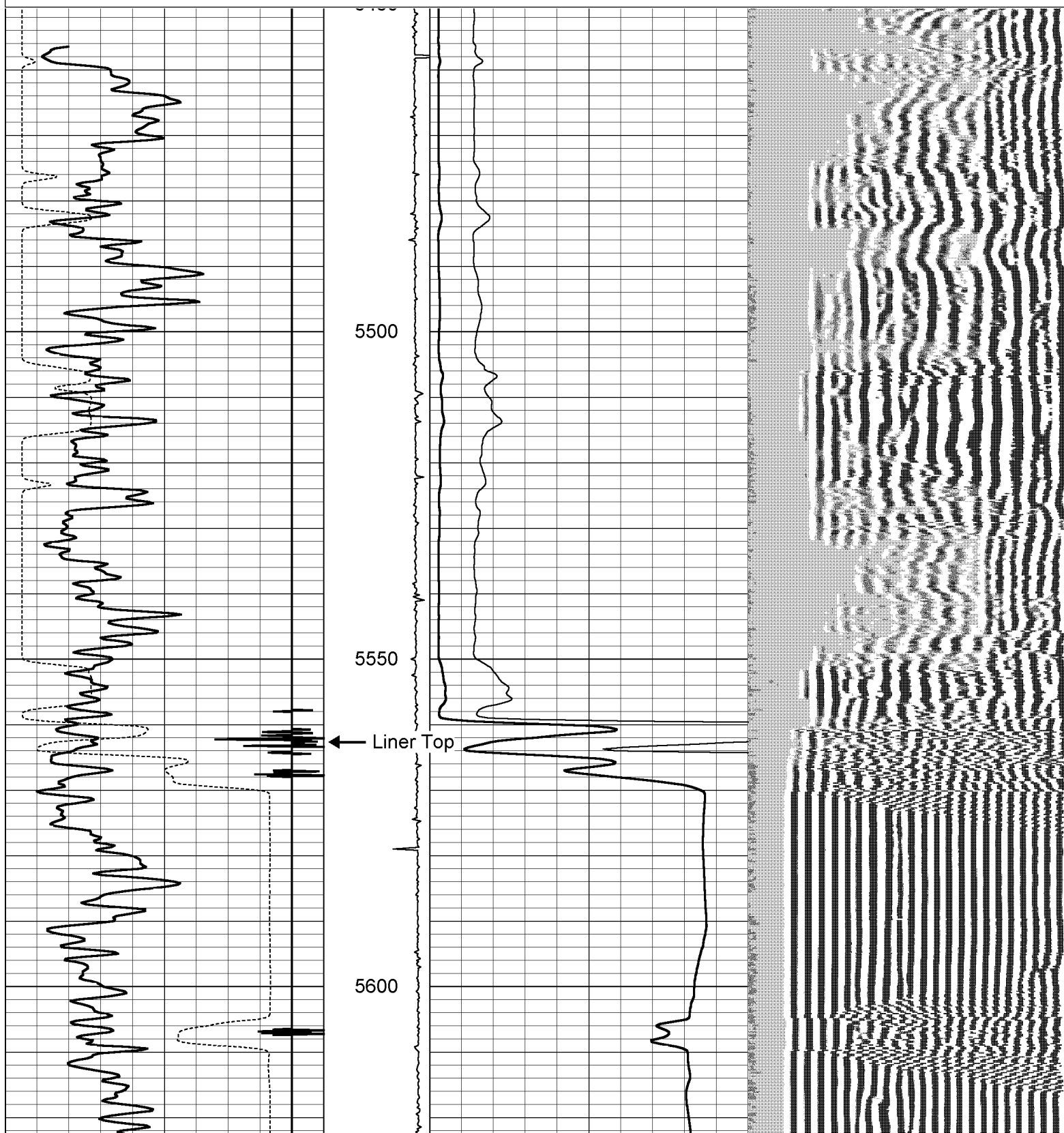
Sensor	Offset (ft)	Schematic	Description	Len (ft)	OD (in)	Wt (lb)
CHD	17.65		Weatherford	1.03	1.44	
CENT	16.63					

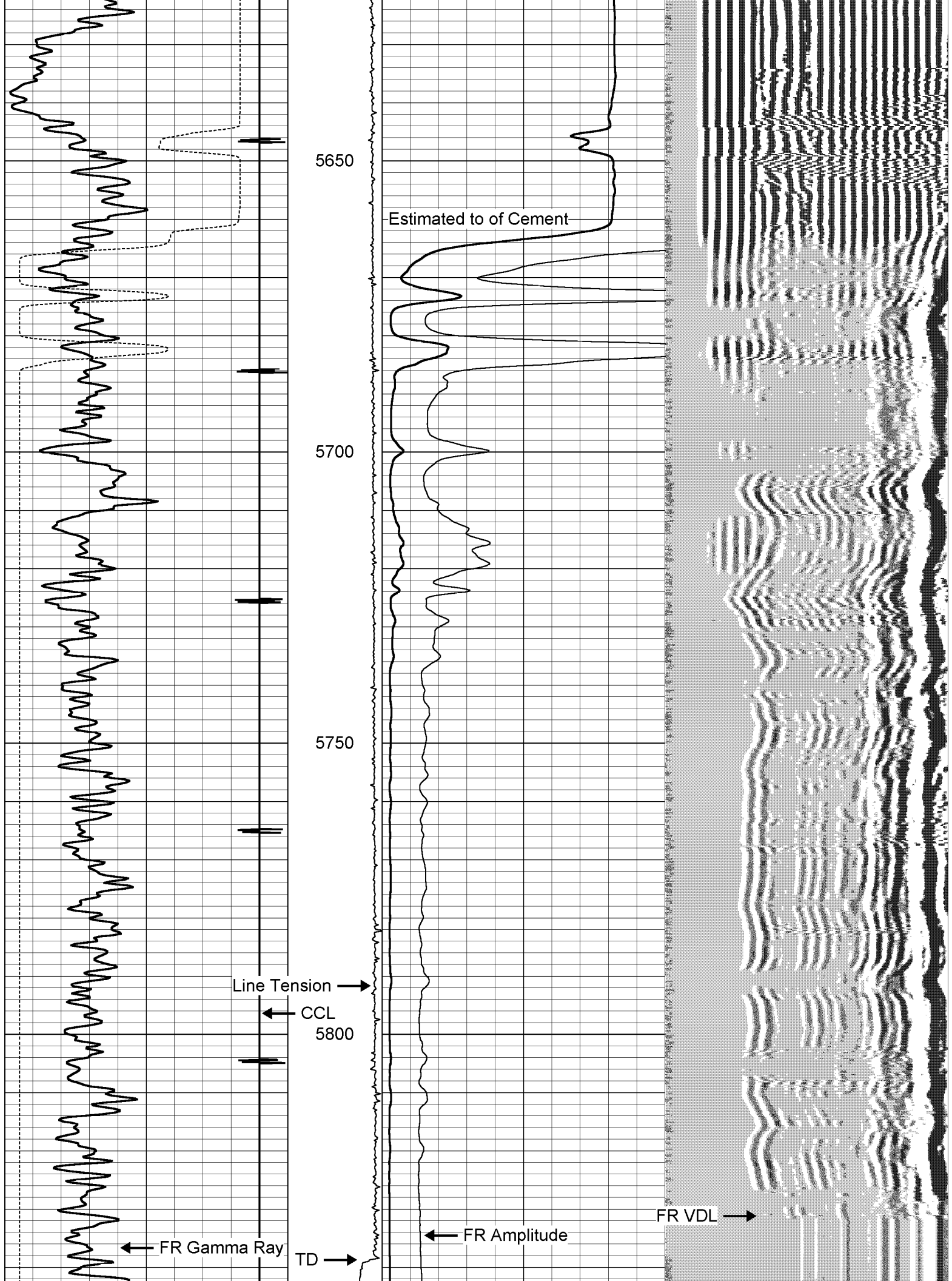
			1.6cent 1 11/16" Centralizer	2.88	1.69	8.00
WVF3FT	8.47					
WVFSYNC	8.47					
WVF5FT	7.47					
			CBT-CBT1.6M (CBTT1_6M-XXX) 1 11/16" 400F/20K PSI TEKCO DUAL RECEIVER BOND TOOL	9.76	1.69	30.00
CENT	3.99					
			1.6cent 1 11/16" Centralizer	2.88	1.69	8.00
CCL	0.00		CCLL-CCLL1.6V (CCLL1_6V) 1 11/16" 500F/20K PSI TITAN LOGGING CCL	1.83	1.69	5.00
GR	-3.87		GR-GRS1.6V (GRS1_6V) 1 11/16" 500F/20K PSI TITAN LOGGING GAMMA RAY	4.58	1.69	22.00
Dataset: /field/well/run/_plots/_jobs_/job2 Total Length: 22.95 ft Total Weight: 73.00 lb O.D. 1.69 in						

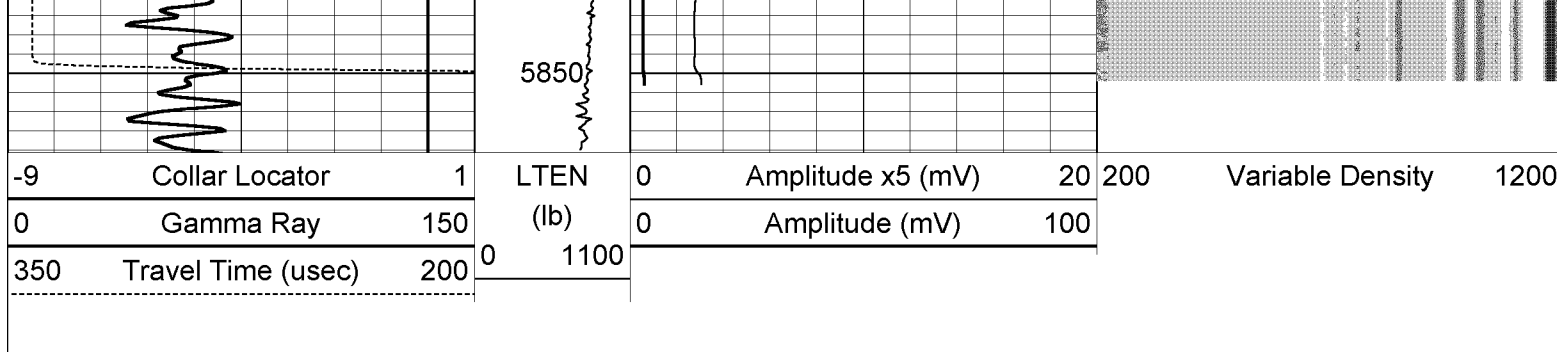
# Weatherford

Database File: 117908hunterenergy.db  
Dataset Pathname: pass9  
Presentation Format: cbldr\_ws  
Dataset Creation: Tue Feb 28 10:52:24 2006 by Log Warrior 7.0 Weather  
Charted by: Depth in Feet scaled 1:240

-9	Collar Locator	1	LTEN	0	Amplitude x5 (mV)	20	200	Variable Density	1200
0	Gamma Ray	150	(lb)	0	Amplitude (mV)	100			
350	Travel Time (usec)	200	0 1100						





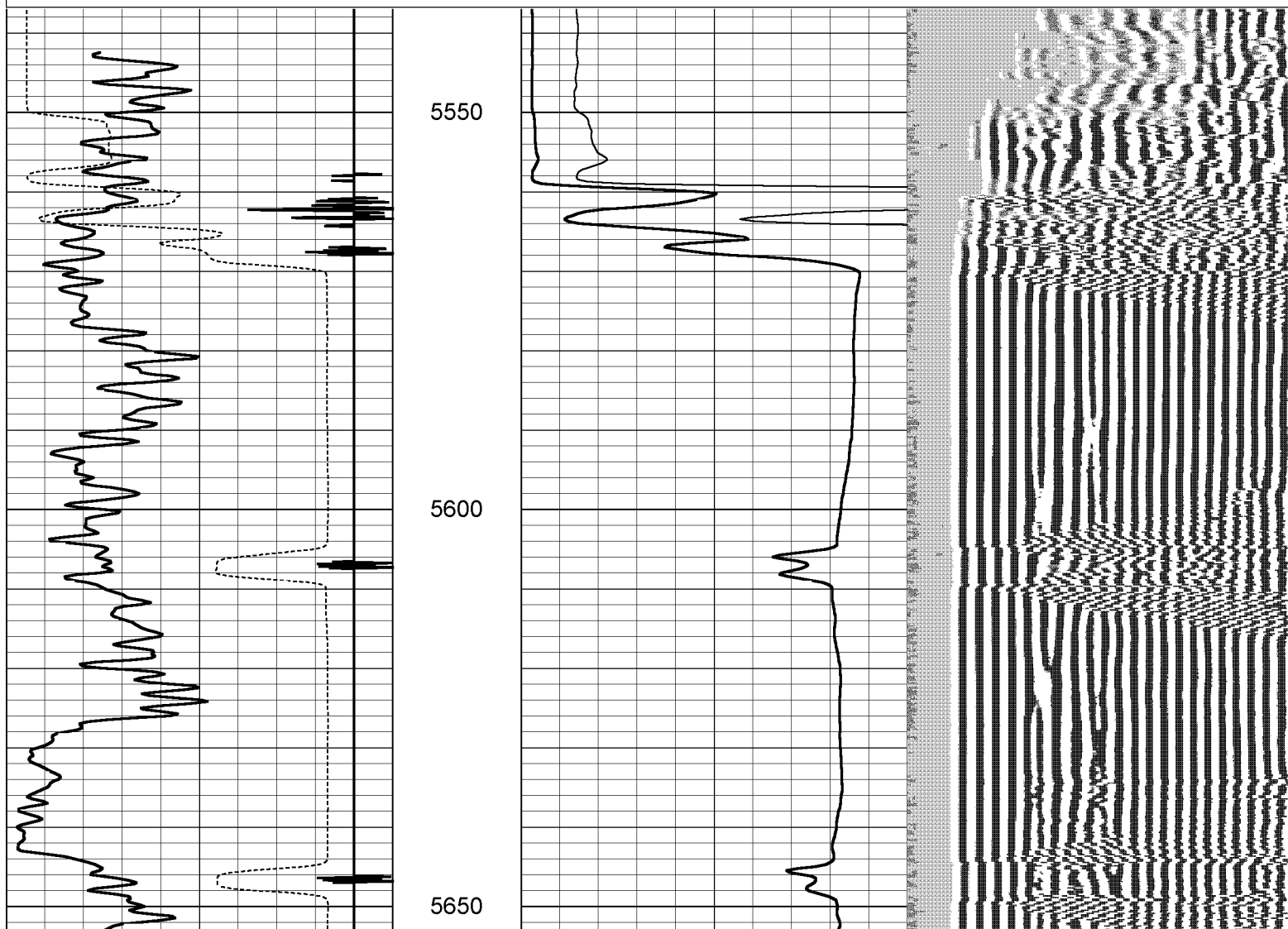


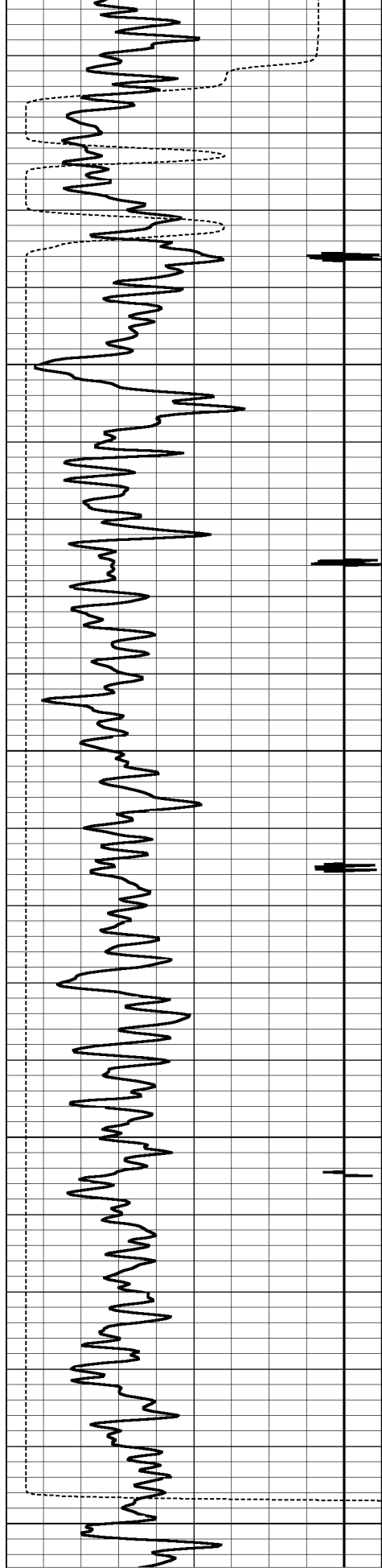
**Weatherford®**

# Repeat Pass

Database File: 117908hunterenergy.db  
 Dataset Pathname: pass6  
 Presentation Format: cbldr\_ws  
 Dataset Creation: Tue Feb 28 10:34:34 2006 by Log Warrior 7.0 Weather  
 Charted by: Depth in Feet scaled 1:240

-9	Collar Locator	1	0	Amplitude x5 (mV)	20	200	Variable Density	1200
0	Gamma Ray	150	0	Amplitude (mV)	100			
350	Travel Time (usec)	200						





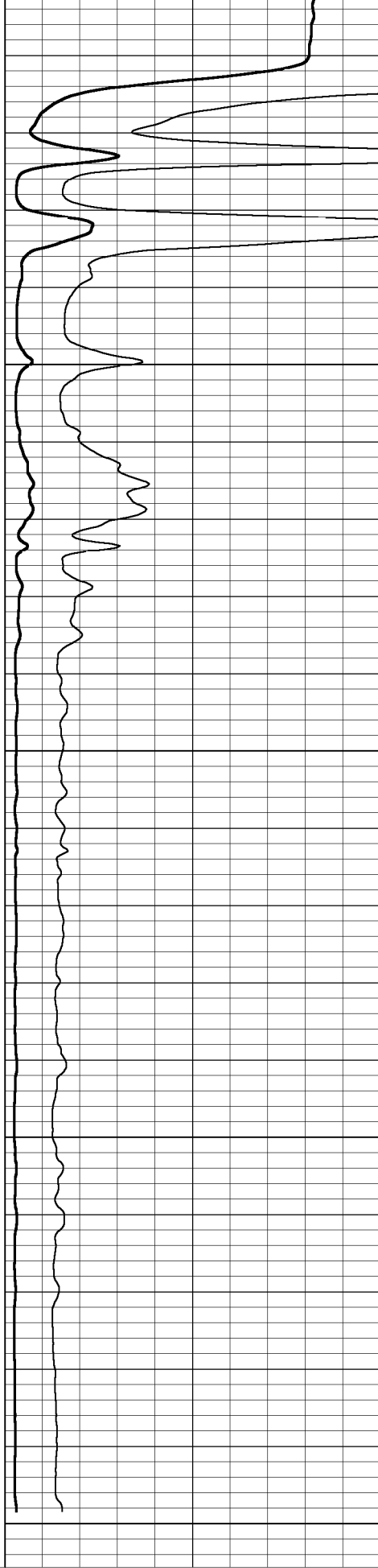
-9	Collar Locator	1
0	Gamma Ray	150
350	Travel Time (usec)	200

5700

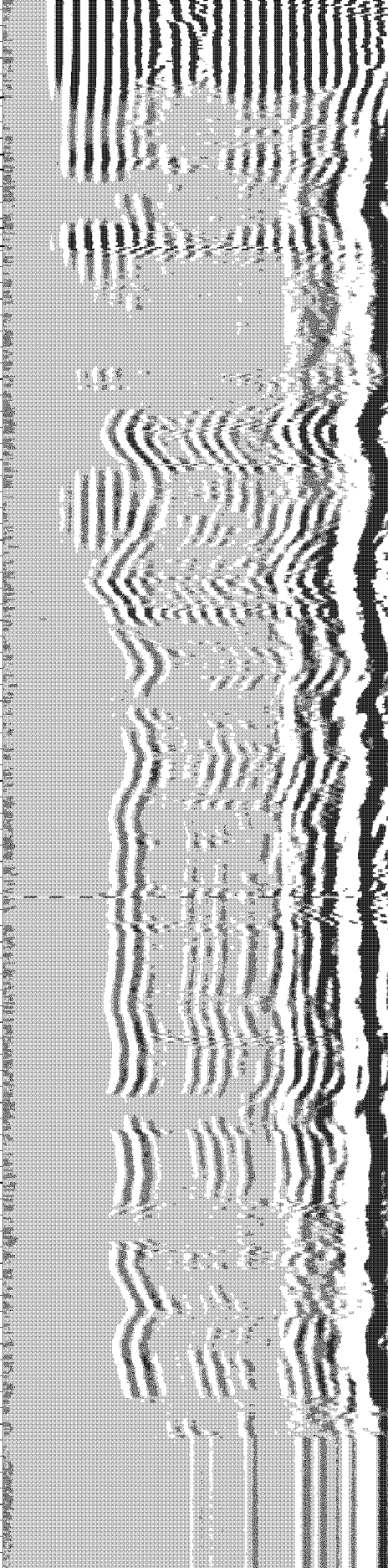
5750

5800

5850



0	Amplitude x5 (mV)	20
0	Amplitude (mV)	100



200	Variable Density	1200
-----	------------------	------



**Weatherford®**

# Free Pipe Pass

Database File: 117908hunterenergy.db

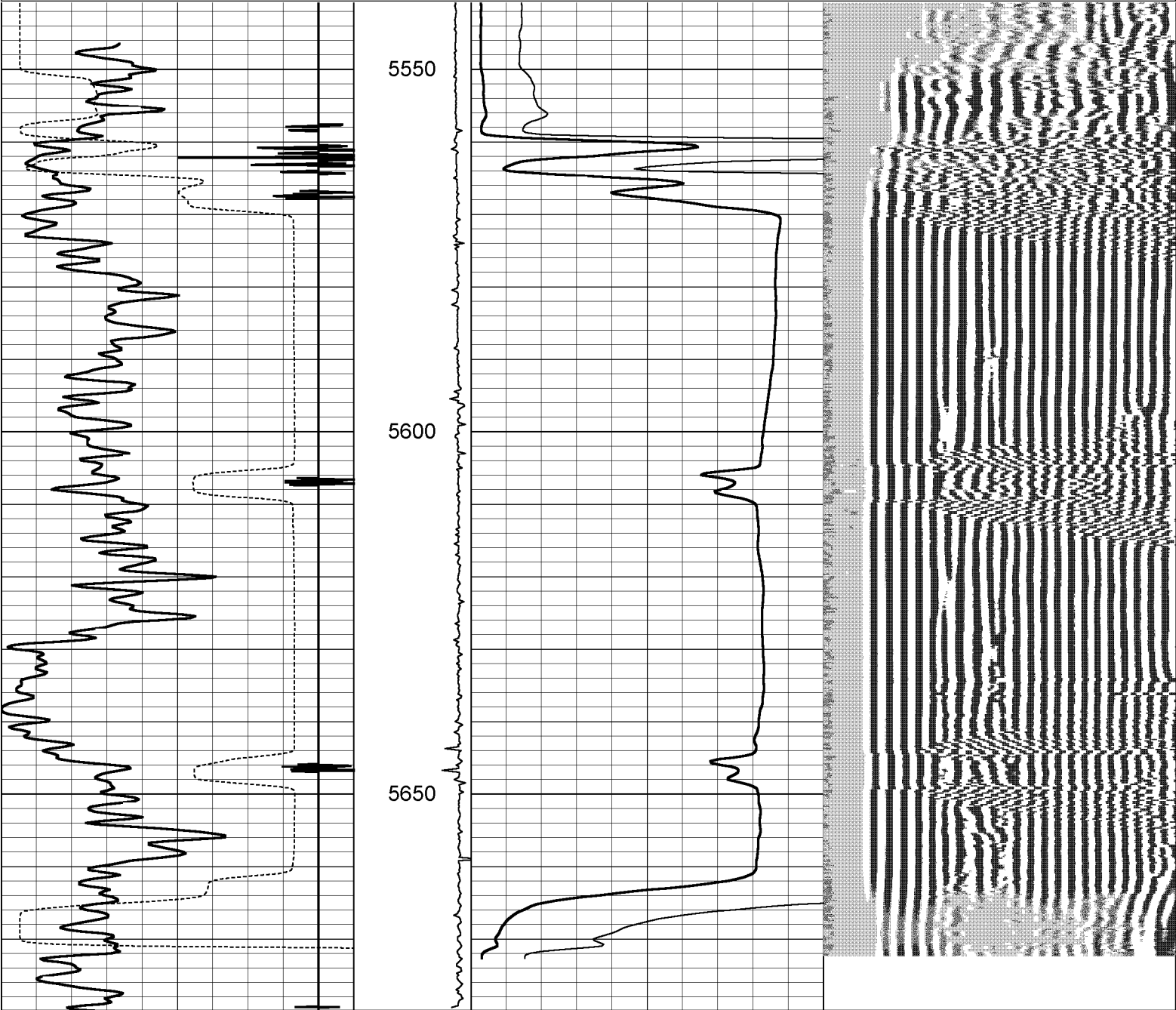
Dataset Pathname: pass10

Presentation Format: cbldr\_ws

Dataset Creation: Tue Feb 28 11:08:57 2006 by Log Warrior 7.0 Weather

Charted by: Depth in Feet scaled 1:240

-9	Collar Locator	1	LTEN	0	Amplitude x5 (mV)	20	200	Variable Density	1200
0	Gamma Ray	150	(lb)	0	Amplitude (mV)	100			
350	Travel Time (usec)	200	0 1100						



-9	Collar Locator	1	LTEN	0	Amplitude x5 (mV)	20	200	Variable Density	1200
0	Gamma Ray	150	(lb)	0	Amplitude (mV)	100			

350	Travel Time (usec)	200	0	1100

Gamma Ray Calibration Report				
------------------------------	--	--	--	--

Serial Number:	GRS1_6V			
Tool Model:	GRS1.6V			
Performed:	Fri Feb 10 07:17:32 2006			
Calibrator Value:	1.0			
Background Reading:	0.0		cps	
Calibrator Reading:	1.0		cps	
Sensitivity:	2.5095		/cps	

Segmented Cement Bond Log Calibration Report				
--	--	--	--	--

Serial Number:	CBTT1_6M-XXX			
Tool Model:	CBT1.6M			
Calibration Casing Diameter:	4.500		in	
Calibration Depth:	5660.785		ft	

Master Calibration, performed Tue Feb 28 10:30:52 2006:						
	Raw (v)		Calibrated (mv)		Results	
	Zero	Cal	Zero	Cal	Gain	Offset
3'	-0.070	1.794	0.000	81.196	43.570	3.050
CAL						
5'	0.020	1.726	0.000	81.196	47.577	-0.944
SUM						
S1						
S2						
S3						
S4						
S5						
S6						
S7						
S8						

Internal Reference Calibration, performed Wed Dec 31 17:00:00 1969:						
	Raw (v)		Calibrated (v)		Results	
	Zero	Cal	Zero	Cal	Gain	Offset
CAL						

Air Zero Calibration, performed Tue Feb 28 09:39:57 2006:						
	Raw (v)		Calibrated (v)		Results	
	Zero		Zero		Offset	
3'	0.000		0.000		0.000	
5'	0.000		0.000		0.000	
SUM						
S1						



S1  
S2  
S3  
S4  
S5  
S6  
S7  
S8