

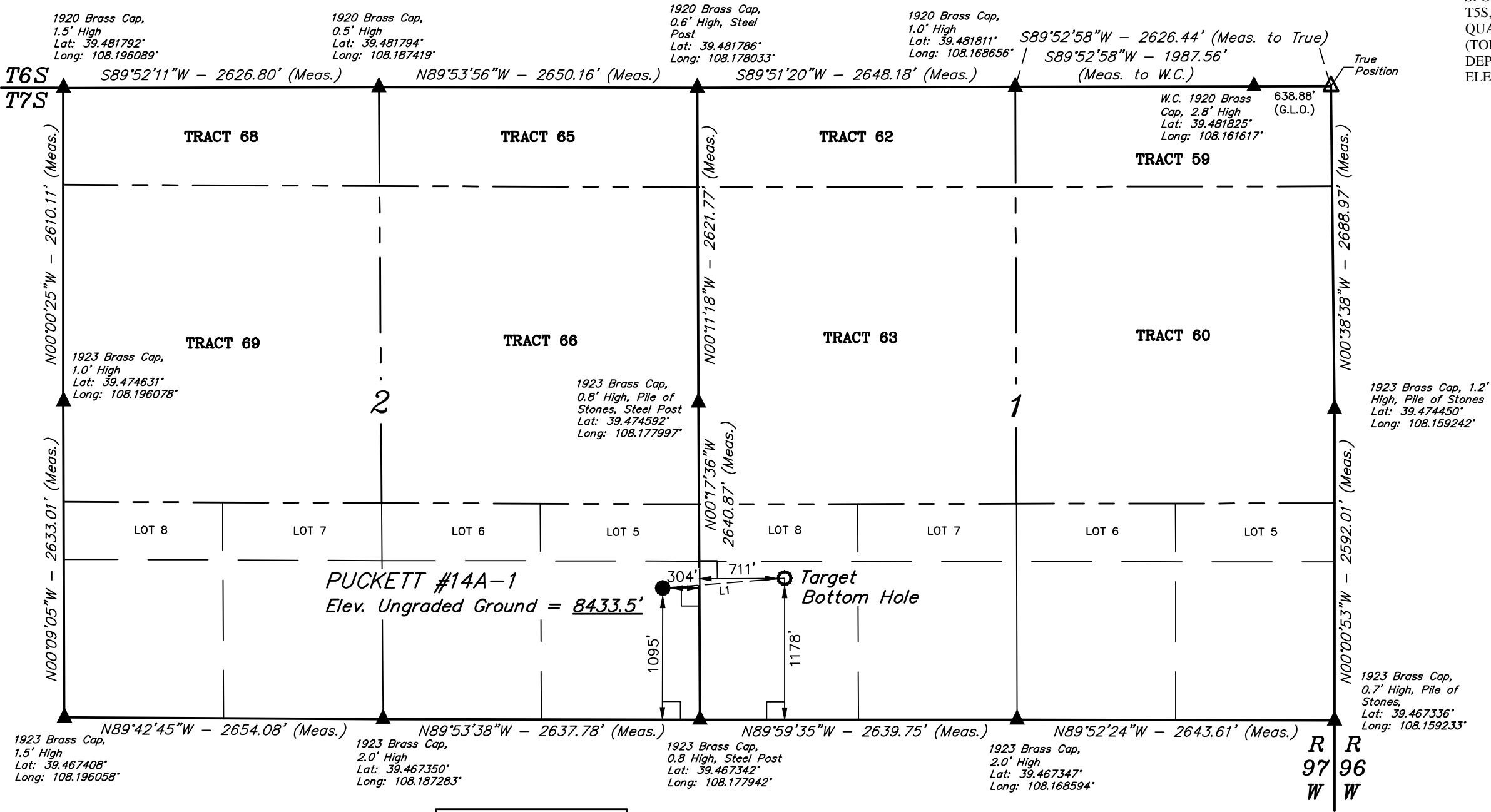
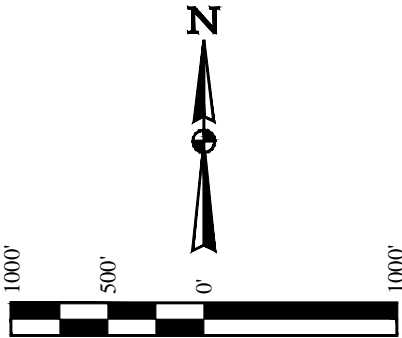
T7S, R97W, 6th P.M.

Caerus Oil & Gas LLC

PUCKETT #14A-1
SE 1/4 SE 1/4, SECTION 2, T7S, R97W, 6th P.M.
GARFIELD COUNTY, COLORADO

BASIS OF BEARINGS
BASIS OF ELEVATION

SPOT ELEVATION AT THE NORTHWEST CORNER OF SECTION 30, T5S, R95W, 6th P.M. TAKEN FROM THE FORKED GULCH QUADRANGLE, COLORADO, GARFIELD COUNTY, 7.5 MINUTE SERIES (TOPOGRAPHICAL MAP) PUBLISHED BY THE UNITED STATES DEPARTMENT OF THE INTERIOR, GEOLOGICAL SURVEY. SAID ELEVATION IS MARKED AS BEING 5966 FEET.



LINE TABLE		
LINE	DIRECTION	LENGTH
L1	N85°20'47"E	1018.35'

- LEGEND:
- 90° SYMBOL
 - PROPOSED WELLHEAD.
 - TARGET BOTTOM HOLE.
 - SECTION CORNERS LOCATED.
 - SECTION CORNERS RE-ESTABLISHED.
(Not Set on Ground.)

PDOP = 1.5

NAD 83 (TARGET BOTTOM HOLE)	NAD 83 (SURFACE LOCATION)
LATITUDE = 39°28'14.08" (39.470578)	LATITUDE = 39°28'13.25" (39.470347)
LONGITUDE = 108°10'31.61" (108.175447)	LONGITUDE = 108°10'44.55" (108.179042)
NAD 27 (TARGET BOTTOM HOLE)	NAD 27 (SURFACE LOCATION)
LATITUDE = 39°28'14.16" (39.470600)	LATITUDE = 39°28'13.33" (39.470369)
LONGITUDE = 108°10'29.32" (108.174811)	LONGITUDE = 108°10'42.26" (108.178406)



UELS, LLC
Corporate Office * 85 South 200 East
Vernal, UT 84078 * (435) 789-1017

SURVEYED BY: BRADEN BOX, J.C.	DATE: 08-21-14
DRAWN BY: M.D.	DATE DRAWN: 09-16-14
SCALE: 1" = 1000'	REVISED: 00-00-00

WELL LOCATION PLAT

CERTIFICATE

THIS IS TO CERTIFY THAT THE ABOVE PLAT WAS PREPARED FROM FIELD NOTES OF ACTUAL SURVEYS MADE BY ME OR UNDER MY SUPERVISION AND THAT THE SAME ARE TRUE AND CORRECT TO THE BEST OF MY KNOWLEDGE AND BELIEF.

REGISTERED LAND SURVEYOR
REGISTRATION NO. 38130
STATE OF COLORADO 08-21-14