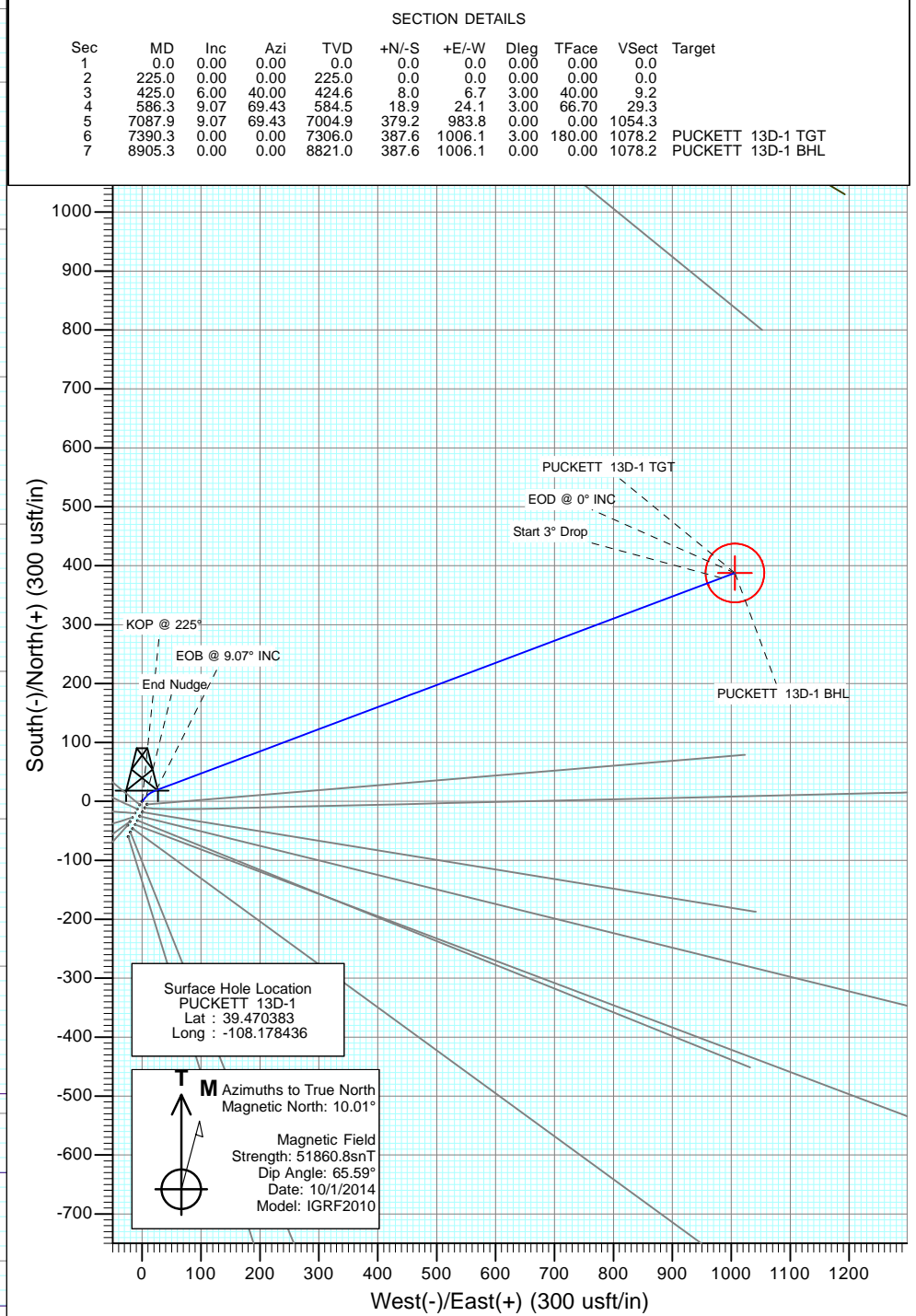
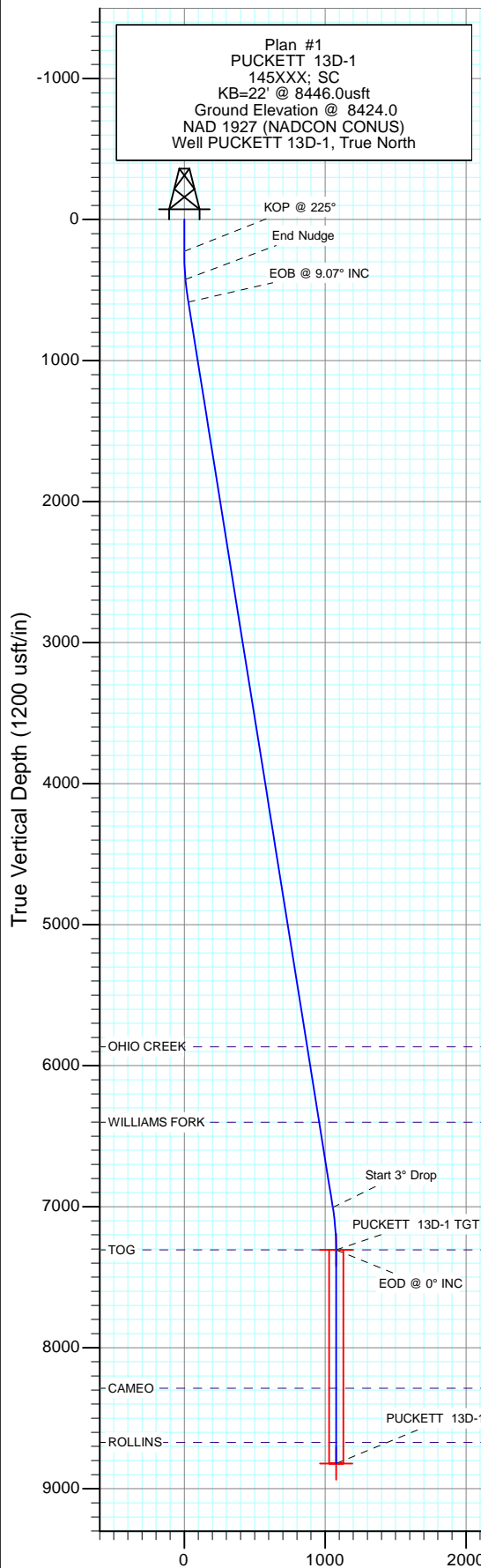


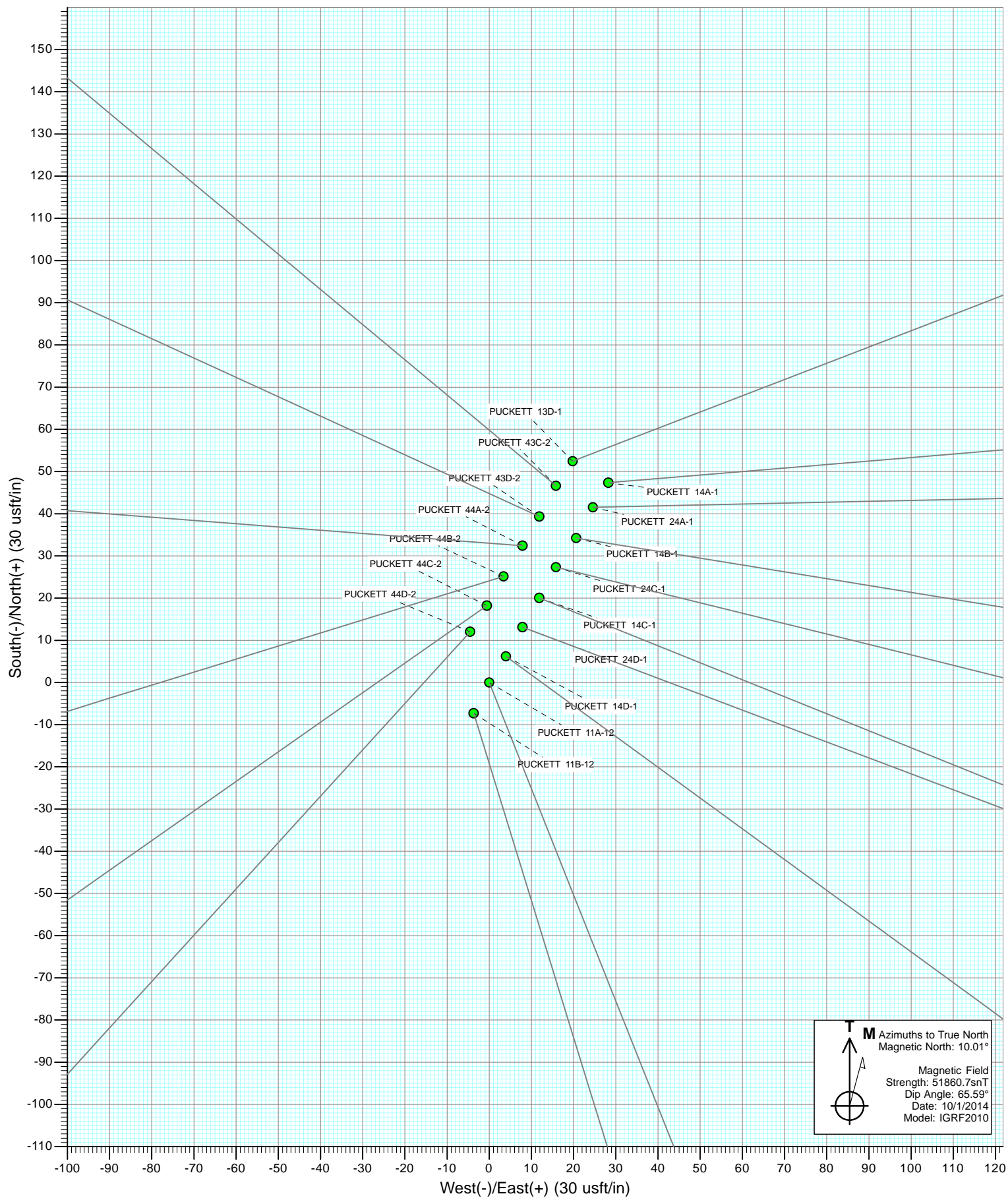


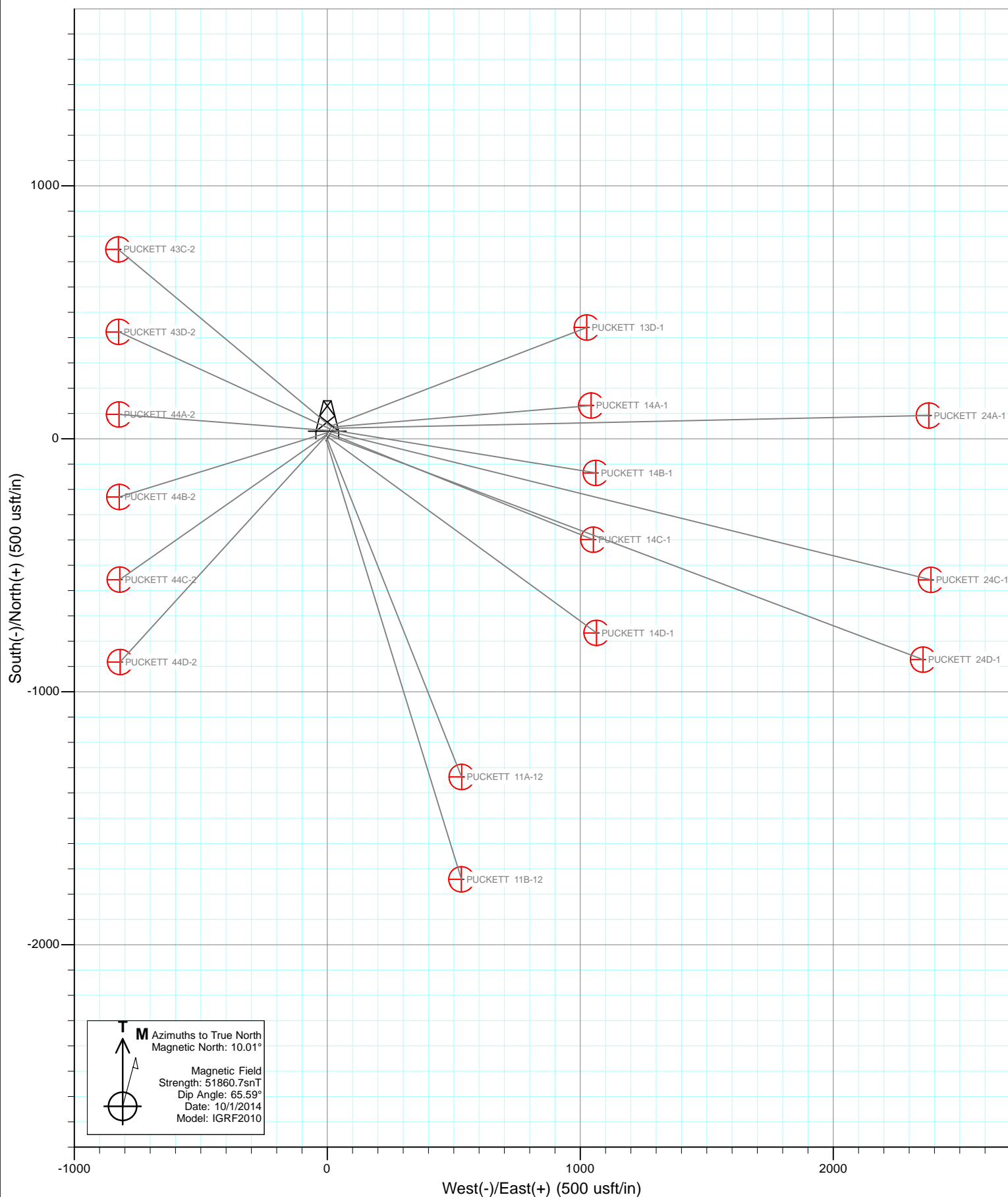
Project: Garfield County, CO
Site: S2-T7S-R97W (Puckett Pad P2)
Well: PUCKETT 13D-1
Wellbore: DD
Design: Plan #1



DESIGN TARGET DETAILS						
Name	+N/-S	+E/-W	Northing	Easting	Latitude	Longitude
PUCKETT 13D-1 TGT	387.6	1006.1	607707.81	1244976.06	39.471447	-108.174872
PUCKETT 13D-1 BHL	387.6	1006.1	607707.81	1244976.06	39.471447	-108.174872

Vertical Section at 68.93° (1200 usft/in)





Cathedral Energy Services

Planning Report

Database:	USA EDM 5000 Multi Users DB	Local Co-ordinate Reference:	Well PUCKETT 13D-1
Company:	Caerus Oil & Gas (NAD 27)	TVD Reference:	KB=22' @ 8446.0usft
Project:	Garfield County, CO	MD Reference:	KB=22' @ 8446.0usft
Site:	S2-T7S-R97W (Puckett Pad P2)	North Reference:	True
Well:	PUCKETT 13D-1	Survey Calculation Method:	Minimum Curvature
Wellbore:	DD		
Design:	Plan #1		

Project	Garfield County, CO		
Map System:	US State Plane 1927 (Exact solution)	System Datum:	Mean Sea Level
Geo Datum:	NAD 1927 (NADCON CONUS)		
Map Zone:	Colorado Central 502		

Site		S2-T7S-R97W (Puckett Pad P2)			
Site Position:		Northing:	607,291.06 usft	Latitude:	39.470219
From:	Lat/Long	Easting:	1,243,933.75 usft	Longitude:	-108.178519
Position Uncertainty:	0.0 usft	Slot Radius:	13-3/16"	Grid Convergence:	-1.69 °

Well	PUCKETT 13D-1					
Well Position	+N/-S	0.0 usft	Northing:	607,350.06 usft	Latitude:	39.470383
	+E/-W	0.0 usft	Easting:	1,243,958.94 usft	Longitude:	-108.178436
Position Uncertainty		0.0 usft	Wellhead Elevation:	0.0 usft	Ground Level:	8,424.0 usft

Wellbore	DD				
Magnetics	Model Name	Sample Date	Declination (°)	Dip Angle (°)	Field Strength (nT)
	IGRF2010	10/1/2014	10.00	65.59	51,861

Design	Plan #1			
Audit Notes:				
Version:	Phase:	PLAN	Tie On Depth:	0.0
Vertical Section:	Depth From (TVD) (usft)	+N/-S (usft)	+E/-W (usft)	Direction (°)
	0.0	0.0	0.0	68.93

Plan Sections										
Measured Depth (usft)	Inclination (°)	Azimuth (°)	Vertical Depth (usft)	+N/-S (usft)	+E/-W (usft)	Dogleg Rate (°/100usft)	Build Rate (°/100usft)	Turn Rate (°/100usft)	TFO (°)	Target
0.0	0.00	0.00	0.0	0.0	0.0	0.00	0.00	0.00	0.00	
225.0	0.00	0.00	225.0	0.0	0.0	0.00	0.00	0.00	0.00	
425.0	6.00	40.00	424.6	8.0	6.7	3.00	3.00	0.00	40.00	
586.3	9.07	69.43	584.5	18.9	24.1	3.00	1.90	18.25	66.70	
7,087.9	9.07	69.43	7,004.9	379.2	983.8	0.00	0.00	0.00	0.00	
7,390.3	0.00	0.00	7,306.0	387.6	1,006.1	3.00	-3.00	0.00	180.00	PUCKETT 13D-1 TG
8,905.3	0.00	0.00	8,821.0	387.6	1,006.1	0.00	0.00	0.00	0.00	PUCKETT 13D-1 BH

Cathedral Energy Services

Planning Report

Database:	USA EDM 5000 Multi Users DB	Local Co-ordinate Reference:	Well PUCKETT 13D-1
Company:	Caerus Oil & Gas (NAD 27)	TVD Reference:	KB=22' @ 8446.0usft
Project:	Garfield County, CO	MD Reference:	KB=22' @ 8446.0usft
Site:	S2-T7S-R97W (Puckett Pad P2)	North Reference:	True
Well:	PUCKETT 13D-1	Survey Calculation Method:	Minimum Curvature
Wellbore:	DD		
Design:	Plan #1		

Planned Survey

Measured Depth (usft)	Inclination (°)	Azimuth (°)	Vertical Depth (usft)	+N/-S (usft)	+E/-W (usft)	Vertical Section (usft)	Dogleg Rate (°/100usft)	Build Rate (°/100u)	Comments / Formations
0.0	0.00	0.00	0.0	0.0	0.0	0.0	0.00	0.00	
100.0	0.00	0.00	100.0	0.0	0.0	0.0	0.00	0.00	
200.0	0.00	0.00	200.0	0.0	0.0	0.0	0.00	0.00	
225.0	0.00	0.00	225.0	0.0	0.0	0.0	0.00	0.00	KOP @ 225°
300.0	2.25	40.00	300.0	1.1	0.9	1.3	3.00	3.00	
400.0	5.25	40.00	399.8	6.1	5.2	7.0	3.00	3.00	
425.0	6.00	40.00	424.6	8.0	6.7	9.2	3.00	3.00	End Nudge
500.0	7.19	56.74	499.1	13.6	13.2	17.2	3.00	1.59	
586.3	9.07	69.43	584.5	18.9	24.1	29.3	3.00	2.18	EOB @ 9.07° INC
600.0	9.07	69.43	598.1	19.7	26.1	31.4	0.00	0.00	
700.0	9.07	69.43	696.9	25.2	40.8	47.2	0.00	0.00	
800.0	9.07	69.43	795.6	30.8	55.6	63.0	0.00	0.00	
900.0	9.07	69.43	894.4	36.3	70.4	78.7	0.00	0.00	
1,000.0	9.07	69.43	993.1	41.9	85.1	94.5	0.00	0.00	
1,100.0	9.07	69.43	1,091.9	47.4	99.9	110.3	0.00	0.00	
1,200.0	9.07	69.43	1,190.6	53.0	114.6	126.0	0.00	0.00	
1,300.0	9.07	69.43	1,289.4	58.5	129.4	141.8	0.00	0.00	
1,400.0	9.07	69.43	1,388.1	64.0	144.2	157.6	0.00	0.00	
1,500.0	9.07	69.43	1,486.9	69.6	158.9	173.3	0.00	0.00	
1,600.0	9.07	69.43	1,585.6	75.1	173.7	189.1	0.00	0.00	
1,700.0	9.07	69.43	1,684.3	80.7	188.5	204.9	0.00	0.00	
1,800.0	9.07	69.43	1,783.1	86.2	203.2	220.6	0.00	0.00	
1,900.0	9.07	69.43	1,881.8	91.7	218.0	236.4	0.00	0.00	
2,000.0	9.07	69.43	1,980.6	97.3	232.7	252.1	0.00	0.00	
2,100.0	9.07	69.43	2,079.3	102.8	247.5	267.9	0.00	0.00	
2,200.0	9.07	69.43	2,178.1	108.4	262.3	283.7	0.00	0.00	
2,300.0	9.07	69.43	2,276.8	113.9	277.0	299.4	0.00	0.00	
2,400.0	9.07	69.43	2,375.6	119.4	291.8	315.2	0.00	0.00	
2,500.0	9.07	69.43	2,474.3	125.0	306.5	331.0	0.00	0.00	
2,600.0	9.07	69.43	2,573.1	130.5	321.3	346.7	0.00	0.00	
2,700.0	9.07	69.43	2,671.8	136.1	336.1	362.5	0.00	0.00	
2,800.0	9.07	69.43	2,770.6	141.6	350.8	378.3	0.00	0.00	
2,900.0	9.07	69.43	2,869.3	147.1	365.6	394.0	0.00	0.00	
3,000.0	9.07	69.43	2,968.1	152.7	380.4	409.8	0.00	0.00	
3,100.0	9.07	69.43	3,066.8	158.2	395.1	425.6	0.00	0.00	
3,200.0	9.07	69.43	3,165.6	163.8	409.9	441.3	0.00	0.00	
3,300.0	9.07	69.43	3,264.3	169.3	424.6	457.1	0.00	0.00	
3,400.0	9.07	69.43	3,363.1	174.8	439.4	472.9	0.00	0.00	
3,500.0	9.07	69.43	3,461.8	180.4	454.2	488.6	0.00	0.00	
3,600.0	9.07	69.43	3,560.6	185.9	468.9	504.4	0.00	0.00	
3,700.0	9.07	69.43	3,659.3	191.5	483.7	520.2	0.00	0.00	
3,800.0	9.07	69.43	3,758.1	197.0	498.4	535.9	0.00	0.00	
3,900.0	9.07	69.43	3,856.8	202.6	513.2	551.7	0.00	0.00	
4,000.0	9.07	69.43	3,955.6	208.1	528.0	567.5	0.00	0.00	
4,100.0	9.07	69.43	4,054.3	213.6	542.7	583.2	0.00	0.00	
4,200.0	9.07	69.43	4,153.1	219.2	557.5	599.0	0.00	0.00	
4,300.0	9.07	69.43	4,251.8	224.7	572.2	614.8	0.00	0.00	
4,400.0	9.07	69.43	4,350.6	230.3	587.0	630.5	0.00	0.00	
4,500.0	9.07	69.43	4,449.3	235.8	601.8	646.3	0.00	0.00	
4,600.0	9.07	69.43	4,548.1	241.3	616.5	662.1	0.00	0.00	
4,700.0	9.07	69.43	4,646.8	246.9	631.3	677.8	0.00	0.00	
4,800.0	9.07	69.43	4,745.6	252.4	646.1	693.6	0.00	0.00	

Cathedral Energy Services

Planning Report

Database:	USA EDM 5000 Multi Users DB	Local Co-ordinate Reference:	Well PUCKETT 13D-1
Company:	Caerus Oil & Gas (NAD 27)	TVD Reference:	KB=22' @ 8446.0usft
Project:	Garfield County, CO	MD Reference:	KB=22' @ 8446.0usft
Site:	S2-T7S-R97W (Puckett Pad P2)	North Reference:	True
Well:	PUCKETT 13D-1	Survey Calculation Method:	Minimum Curvature
Wellbore:	DD		
Design:	Plan #1		

Planned Survey

Measured Depth (usft)	Inclination (°)	Azimuth (°)	Vertical Depth (usft)	+N/-S (usft)	+E/-W (usft)	Vertical Section (usft)	Dogleg Rate (°/100usft)	Build Rate (°/100u)	Comments / Formations
4,900.0	9.07	69.43	4,844.3	258.0	660.8	709.4	0.00	0.00	
5,000.0	9.07	69.43	4,943.1	263.5	675.6	725.1	0.00	0.00	
5,100.0	9.07	69.43	5,041.8	269.0	690.3	740.9	0.00	0.00	
5,200.0	9.07	69.43	5,140.6	274.6	705.1	756.7	0.00	0.00	
5,300.0	9.07	69.43	5,239.3	280.1	719.9	772.4	0.00	0.00	
5,400.0	9.07	69.43	5,338.1	285.7	734.6	788.2	0.00	0.00	
5,500.0	9.07	69.43	5,436.8	291.2	749.4	804.0	0.00	0.00	
5,600.0	9.07	69.43	5,535.6	296.7	764.1	819.7	0.00	0.00	
5,700.0	9.07	69.43	5,634.3	302.3	778.9	835.5	0.00	0.00	
5,800.0	9.07	69.43	5,733.1	307.8	793.7	851.3	0.00	0.00	
5,900.0	9.07	69.43	5,831.8	313.4	808.4	867.0	0.00	0.00	
5,934.6	9.07	69.43	5,866.0	315.3	813.5	872.5	0.00	0.00	OHIO CREEK
6,000.0	9.07	69.43	5,930.6	318.9	823.2	882.8	0.00	0.00	
6,100.0	9.07	69.43	6,029.3	324.4	837.9	898.6	0.00	0.00	
6,200.0	9.07	69.43	6,128.1	330.0	852.7	914.3	0.00	0.00	
6,300.0	9.07	69.43	6,226.8	335.5	867.5	930.1	0.00	0.00	
6,400.0	9.07	69.43	6,325.6	341.1	882.2	945.9	0.00	0.00	
6,476.4	9.07	69.43	6,401.0	345.3	893.5	957.9	0.00	0.00	WILLIAMS FORK
6,500.0	9.07	69.43	6,424.3	346.6	897.0	961.6	0.00	0.00	
6,600.0	9.07	69.43	6,523.1	352.2	911.8	977.4	0.00	0.00	
6,700.0	9.07	69.43	6,621.8	357.7	926.5	993.2	0.00	0.00	
6,800.0	9.07	69.43	6,720.6	363.2	941.3	1,008.9	0.00	0.00	
6,900.0	9.07	69.43	6,819.3	368.8	956.0	1,024.7	0.00	0.00	
7,000.0	9.07	69.43	6,918.1	374.3	970.8	1,040.5	0.00	0.00	
7,087.9	9.07	69.43	7,004.9	379.2	983.8	1,054.3	0.00	0.00	Start 3° Drop
7,100.0	8.71	69.43	7,016.8	379.8	985.5	1,056.2	3.00	-3.00	
7,200.0	5.71	69.43	7,116.0	384.2	997.3	1,068.7	3.00	-3.00	
7,300.0	2.71	69.43	7,215.7	386.8	1,004.1	1,076.1	3.00	-3.00	
7,390.3	0.00	0.00	7,306.0	387.6	1,006.1	1,078.2	3.00	-3.00	EOD @ 0° INC - TOG
7,400.0	0.00	0.00	7,315.7	387.6	1,006.1	1,078.2	0.00	0.00	
7,500.0	0.00	0.00	7,415.7	387.6	1,006.1	1,078.2	0.00	0.00	
7,600.0	0.00	0.00	7,515.7	387.6	1,006.1	1,078.2	0.00	0.00	
7,700.0	0.00	0.00	7,615.7	387.6	1,006.1	1,078.2	0.00	0.00	
7,800.0	0.00	0.00	7,715.7	387.6	1,006.1	1,078.2	0.00	0.00	
7,900.0	0.00	0.00	7,815.7	387.6	1,006.1	1,078.2	0.00	0.00	
8,000.0	0.00	0.00	7,915.7	387.6	1,006.1	1,078.2	0.00	0.00	
8,100.0	0.00	0.00	8,015.7	387.6	1,006.1	1,078.2	0.00	0.00	
8,200.0	0.00	0.00	8,115.7	387.6	1,006.1	1,078.2	0.00	0.00	
8,300.0	0.00	0.00	8,215.7	387.6	1,006.1	1,078.2	0.00	0.00	
8,370.3	0.00	0.00	8,286.0	387.6	1,006.1	1,078.2	0.00	0.00	CAMEO
8,400.0	0.00	0.00	8,315.7	387.6	1,006.1	1,078.2	0.00	0.00	
8,500.0	0.00	0.00	8,415.7	387.6	1,006.1	1,078.2	0.00	0.00	
8,600.0	0.00	0.00	8,515.7	387.6	1,006.1	1,078.2	0.00	0.00	
8,700.0	0.00	0.00	8,615.7	387.6	1,006.1	1,078.2	0.00	0.00	
8,755.3	0.00	0.00	8,671.0	387.6	1,006.1	1,078.2	0.00	0.00	ROLLINS
8,800.0	0.00	0.00	8,715.7	387.6	1,006.1	1,078.2	0.00	0.00	
8,905.3	0.00	0.00	8,821.0	387.6	1,006.1	1,078.2	0.00	0.00	TD @ 8,905.3' MD

Cathedral Energy Services

Planning Report

Database:	USA EDM 5000 Multi Users DB	Local Co-ordinate Reference:	Well PUCKETT 13D-1
Company:	Caerus Oil & Gas (NAD 27)	TVD Reference:	KB=22' @ 8446.0usft
Project:	Garfield County, CO	MD Reference:	KB=22' @ 8446.0usft
Site:	S2-T7S-R97W (Puckett Pad P2)	North Reference:	True
Well:	PUCKETT 13D-1	Survey Calculation Method:	Minimum Curvature
Wellbore:	DD		
Design:	Plan #1		

Targets									
Target Name									
- hit/miss target	Dip Angle	Dip Dir.	TVD	+N/-S	+E/-W	Northing	Easting	Latitude	Longitude
- Shape	(°)	(°)	(usft)	(usft)	(usft)	(usft)	(usft)		
PUCKETT 13D-1 TGT	0.00	0.00	7,306.0	387.6	1,006.1	607,707.81	1,244,976.06	39.471447	-108.174872
- plan hits target center									
- Point									
PUCKETT 13D-1 BHL	0.00	0.00	8,821.0	387.6	1,006.1	607,707.81	1,244,976.06	39.471447	-108.174872
- plan hits target center									
- Circle (radius 50.0)									

Formations						
Measured Depth	Vertical Depth	Name	Lithology	Dip	Dip Direction	
(usft)	(usft)			(°)	(°)	
5,934.6	5,866.0	OHIO CREEK				
6,476.4	6,401.0	WILLIAMS FORK				
7,390.3	7,306.0	TOG				
8,370.3	8,286.0	CAMEO				
8,755.3	8,671.0	ROLLINS				

Plan Annotations					
Measured Depth	Vertical Depth	Local Coordinates			
(usft)	(usft)	+N/-S	+E/-W	Comment	
(usft)	(usft)	(usft)	(usft)		
225.0	225.0	0.0	0.0	KOP @ 225°	
425.0	424.6	8.0	6.7	End Nudge	
586.3	584.5	18.9	24.1	EOB @ 9.07° INC	
7,087.9	7,004.9	379.2	983.8	Start 3° Drop	
7,390.3	7,306.0	387.6	1,006.1	EOD @ 0° INC	
8,905.3	8,821.0	387.6	1,006.1	TD @ 8,905.3' MD	

Caerus Oil & Gas (NAD 27)

Garfield County, CO

S2-T7S-R97W (Puckett Pad P2)

PUCKETT 13D-1

DD

Plan #1

Anticollision Report

01 October, 2014

Cathedral Energy Services

Anticollision Report

Company:	Caerus Oil & Gas (NAD 27)	Local Co-ordinate Reference:	Well PUCKETT 13D-1
Project:	Garfield County, CO	TVD Reference:	KB=22' @ 8446.0usft
Reference Site:	S2-T7S-R97W (Puckett Pad P2)	MD Reference:	KB=22' @ 8446.0usft
Site Error:	0.0usft	North Reference:	True
Reference Well:	PUCKETT 13D-1	Survey Calculation Method:	Minimum Curvature
Well Error:	0.0usft	Output errors are at	2.00 sigma
Reference Wellbore	DD	Database:	USA EDM 5000 Multi Users DB
Reference Design:	Plan #1	Offset TVD Reference:	Offset Datum

Reference	Plan #1		
Filter type:	NO GLOBAL FILTER: Using user defined selection & filtering criteria		
Interpolation Method:	MD Interval 100.0usft	Error Model:	ISCWSA
Depth Range:	Unlimited	Scan Method:	Closest Approach 3D
Results Limited by:	Maximum center-center distance of 200.0usft	Error Surface:	Elliptical Conic
Warning Levels Evaluated at:	2.00 Sigma		

Survey Tool Program	Date	10/1/2014		
From (usft)	To (usft)	Survey (Wellbore)	Tool Name	Description
0.0	8,905.0	Plan #1 (DD)	ISCWSA MWD	MWD - Standard

Cathedral Energy Services

Anticollision Report

Company:	Caerus Oil & Gas (NAD 27)	Local Co-ordinate Reference:	Well PUCKETT 13D-1
Project:	Garfield County, CO	TVD Reference:	KB=22' @ 8446.0usft
Reference Site:	S2-T7S-R97W (Puckett Pad P2)	MD Reference:	KB=22' @ 8446.0usft
Site Error:	0.0usft	North Reference:	True
Reference Well:	PUCKETT 13D-1	Survey Calculation Method:	Minimum Curvature
Well Error:	0.0usft	Output errors are at	2.00 sigma
Reference Wellbore	DD	Database:	USA EDM 5000 Multi Users DB
Reference Design:	Plan #1	Offset TVD Reference:	Offset Datum

Summary

Site Name Offset Well - Wellbore - Design	Reference	Offset	Distance		Separation Factor	Warning
	Measured Depth (usft)	Measured Depth (usft)	Between Centres (usft)	Between Ellipses (usft)		
S2-T7S-R97W (Puckett Pad H2)						
PUCKETT 13A-1 - DD - Plan #1						Out of range
PUCKETT 13B-1 - DD - Plan #1						Out of range
PUCKETT 13C-1 - DD - Plan #1						Out of range
S2-T7S-R97W (Puckett Pad P2)						
PUCKETT 11A-12 - DD - Plan #1	200.0	200.0	56.0	55.4	89.685	CC
PUCKETT 11A-12 - DD - Plan #1	200.0	200.0	56.0	55.4	89.540	ES
PUCKETT 11A-12 - DD - Plan #1	500.0	491.6	85.1	83.0	39.212	SF
PUCKETT 11B-12 - DD - Plan #1	200.0	200.0	64.2	63.5	102.689	CC, ES
PUCKETT 11B-12 - DD - Plan #1	500.0	487.9	99.5	97.3	45.221	SF
PUCKETT 14A-1 - DD - Plan #1	301.7	301.7	9.8	8.7	9.023	CC, ES
PUCKETT 14A-1 - DD - Plan #1	4,600.0	4,596.8	195.7	164.9	6.340	SF
PUCKETT 14B-1 - DD - Plan #1	200.0	200.0	18.2	17.6	29.162	CC, ES
PUCKETT 14B-1 - DD - Plan #1	2,500.0	2,493.6	192.4	176.6	12.133	SF
PUCKETT 14C-1 - DD - Plan #1	200.0	200.0	33.4	32.7	53.385	CC, ES
PUCKETT 14C-1 - DD - Plan #1	1,800.0	1,789.8	199.1	188.2	18.268	SF
PUCKETT 14D-1 - DD - Plan #1	200.0	200.0	48.9	48.3	78.220	CC, ES
PUCKETT 14D-1 - DD - Plan #1	1,300.0	1,283.6	198.2	190.7	26.650	SF
PUCKETT 24A-1 - DD - Plan #1	200.0	200.0	11.9	11.3	19.093	CC, ES
PUCKETT 24A-1 - DD - Plan #1	400.0	399.6	17.4	15.8	10.803	SF
PUCKETT 24C-1 - DD - Plan #1	200.0	200.0	25.4	24.8	40.700	CC, ES
PUCKETT 24C-1 - DD - Plan #1	800.0	793.4	76.4	72.3	18.687	SF
PUCKETT 24D-1 - DD - Plan #1	200.0	200.0	41.1	40.5	65.738	CC, ES
PUCKETT 24D-1 - DD - Plan #1	800.0	788.5	104.5	100.3	24.886	SF
PUCKETT 43C-2 - DD - Plan #1	200.0	200.0	7.0	6.4	11.263	CC, ES
PUCKETT 43C-2 - DD - Plan #1	300.0	300.0	8.5	7.4	7.544	SF
PUCKETT 43D-2 - DD - Plan #1	200.0	200.0	15.3	14.7	24.490	CC, ES
PUCKETT 43D-2 - DD - Plan #1	400.0	399.6	23.5	21.8	13.727	SF
PUCKETT 44A-2 - DD - Plan #1	200.0	200.0	23.3	22.6	37.249	CC, ES
PUCKETT 44A-2 - DD - Plan #1	400.0	399.6	31.3	29.6	18.256	SF
PUCKETT 44B-2 - DD - Plan #1	200.0	200.0	31.8	31.2	50.964	CC, ES
PUCKETT 44B-2 - DD - Plan #1	400.0	398.5	40.9	39.2	23.874	SF
PUCKETT 44C-2 - DD - Plan #1	200.0	200.0	39.8	39.2	63.716	CC
PUCKETT 44C-2 - DD - Plan #1	203.5	203.5	39.8	39.2	61.993	ES
PUCKETT 44C-2 - DD - Plan #1	400.0	396.8	51.4	49.7	30.094	SF
PUCKETT 44D-2 - DD - Plan #1	200.0	200.0	47.2	46.5	75.460	CC, ES
PUCKETT 44D-2 - DD - Plan #1	400.0	394.5	62.7	61.0	36.297	SF

Cathedral Energy Services

Anticollision Report

Company:	Caerus Oil & Gas (NAD 27)	Local Co-ordinate Reference:	Well PUCKETT 13D-1
Project:	Garfield County, CO	TVD Reference:	KB=22' @ 8446.0usft
Reference Site:	S2-T7S-R97W (Puckett Pad P2)	MD Reference:	KB=22' @ 8446.0usft
Site Error:	0.0usft	North Reference:	True
Reference Well:	PUCKETT 13D-1	Survey Calculation Method:	Minimum Curvature
Well Error:	0.0usft	Output errors are at	2.00 sigma
Reference Wellbore	DD	Database:	USA EDM 5000 Multi Users DB
Reference Design:	Plan #1	Offset TVD Reference:	Offset Datum

Offset Design S2-T7S-R97W (Puckett Pad P2) - PUCKETT 11A-12 - DD - Plan #1												Offset Site Error:	0.0 usft
Survey Program: 0-ISWWSA MWD												Offset Well Error:	0.0 usft
Reference		Offset		Semi Major Axis			Distance						Warning
Measured Depth (usft)	Vertical Depth (usft)	Measured Depth (usft)	Vertical Depth (usft)	Reference (usft)	Offset (usft)	Highside Toolface (°)	Offset Wellbore Centre +N/-S (usft)	+E/-W (usft)	Between Centres (usft)	Between Ellipses (usft)	Total Uncertainty Axis	Separation Factor	
0.0	0.0	0.0	0.0	0.0	0.0	-159.35	-52.4	-19.8	56.0				
100.0	100.0	100.0	100.0	0.1	0.1	-159.35	-52.4	-19.8	56.0	55.9	0.18	319.648	
200.0	200.0	200.0	200.0	0.3	0.3	-159.35	-52.4	-19.8	56.0	55.4	0.62	89.685 CC	
200.0	200.0	200.0	200.0	0.3	0.3	-159.35	-52.4	-19.8	56.0	55.4	0.63	89.540 ES	
300.0	300.0	298.9	298.9	0.5	0.5	160.69	-53.0	-19.5	57.9	56.8	1.11	52.074	
400.0	399.8	396.0	395.9	0.8	0.7	159.53	-57.6	-17.7	67.8	66.2	1.68	40.288	
500.0	499.1	491.6	490.9	1.0	1.0	141.40	-66.6	-14.1	85.1	83.0	2.17	39.212 SF	
600.0	598.1	585.7	584.0	1.3	1.2	128.64	-79.8	-8.9	106.4	103.7	2.68	39.771	
700.0	696.9	679.1	675.6	1.7	1.6	128.40	-97.0	-2.1	131.3	128.0	3.26	40.267	
800.0	795.6	775.7	769.9	2.0	2.0	127.86	-116.1	5.5	157.3	153.4	3.86	40.700	
900.0	894.4	872.2	864.2	2.4	2.4	127.48	-135.2	13.1	183.3	178.8	4.49	40.826	

Cathedral Energy Services

Anticollision Report

Company:	Caerus Oil & Gas (NAD 27)	Local Co-ordinate Reference:	Well PUCKETT 13D-1
Project:	Garfield County, CO	TVD Reference:	KB=22' @ 8446.0usft
Reference Site:	S2-T7S-R97W (Puckett Pad P2)	MD Reference:	KB=22' @ 8446.0usft
Site Error:	0.0usft	North Reference:	True
Reference Well:	PUCKETT 13D-1	Survey Calculation Method:	Minimum Curvature
Well Error:	0.0usft	Output errors are at	2.00 sigma
Reference Wellbore	DD	Database:	USA EDM 5000 Multi Users DB
Reference Design:	Plan #1	Offset TVD Reference:	Offset Datum

Offset Design S2-T7S-R97W (Puckett Pad P2) - PUCKETT 11B-12 - DD - Plan #1													Offset Site Error:	0.0 usft
Survey Program: 0-ISCSWA MWD													Offset Well Error:	0.0 usft
Reference		Offset		Semi Major Axis			Distance							Warning
Measured Depth (usft)	Vertical Depth (usft)	Measured Depth (usft)	Vertical Depth (usft)	Reference (usft)	Offset (usft)	Highside Toolface (°)	Offset Wellbore Centre +N/-S (usft)	+E/-W (usft)	Between Centres (usft)	Between Ellipses (usft)	Total Uncertainty Axis	Separation Factor		
0.0	0.0	0.0	0.0	0.0	0.0	-158.58	-59.7	-23.4	64.2					
100.0	100.0	100.0	100.0	0.1	0.1	-158.58	-59.7	-23.4	64.2	64.0	0.18	365.994		
200.0	200.0	200.0	200.0	0.3	0.3	-158.58	-59.7	-23.4	64.2	63.5	0.62	102.689	CC, ES	
300.0	300.0	297.3	297.3	0.5	0.5	160.46	-62.1	-22.7	67.6	66.5	1.11	60.993		
400.0	399.8	393.5	393.2	0.8	0.7	158.62	-69.1	-20.5	79.8	78.1	1.70	46.800		
500.0	499.1	487.9	486.8	1.0	1.0	140.29	-80.4	-17.1	99.5	97.3	2.20	45.221	SF	
600.0	598.1	580.6	578.1	1.3	1.3	127.41	-95.9	-12.3	123.4	120.7	2.71	45.460		
700.0	696.9	671.4	666.6	1.7	1.7	127.36	-115.0	-6.4	151.1	147.8	3.30	45.748		
800.0	795.6	763.3	755.3	2.0	2.2	126.59	-138.0	0.7	182.1	178.1	3.94	46.260		

Cathedral Energy Services

Anticollision Report

Company:	Caerus Oil & Gas (NAD 27)	Local Co-ordinate Reference:	Well PUCKETT 13D-1
Project:	Garfield County, CO	TVD Reference:	KB=22' @ 8446.0usft
Reference Site:	S2-T7S-R97W (Puckett Pad P2)	MD Reference:	KB=22' @ 8446.0usft
Site Error:	0.0usft	North Reference:	True
Reference Well:	PUCKETT 13D-1	Survey Calculation Method:	Minimum Curvature
Well Error:	0.0usft	Output errors are at	2.00 sigma
Reference Wellbore	DD	Database:	USA EDM 5000 Multi Users DB
Reference Design:	Plan #1	Offset TVD Reference:	Offset Datum

Offset Design S2-T7S-R97W (Puckett Pad P2) - PUCKETT 14A-1 - DD - Plan #1													Offset Site Error:	0.0 usft
Survey Program: 0-ISCSWA MWD													Offset Well Error:	0.0 usft
Reference		Offset		Semi Major Axis		Highside Toolface (°)	Distance		Total Uncertainty Axis	Separation Factor	Warning			
Measured Depth (usft)	Vertical Depth (usft)	Measured Depth (usft)	Vertical Depth (usft)	Reference (usft)	Offset (usft)		Offset Wellbore Centre +N/-S (usft)	+E/-W (usft)						
0.0	0.0	0.0	0.0	0.0	0.0	121.03	-5.1	8.5	9.9					
100.0	100.0	100.0	100.0	0.1	0.1	121.03	-5.1	8.5	9.9	9.7	0.18	56.375		
200.0	200.0	200.0	200.0	0.3	0.3	121.03	-5.1	8.5	9.9	9.3	0.62	15.817		
300.0	300.0	300.0	300.0	0.5	0.5	89.60	-5.1	8.5	9.8	8.7	1.07	9.103		
301.7	301.7	301.7	301.7	0.5	0.5	90.00	-5.1	8.5	9.8	8.7	1.08	9.023 CC, ES		
400.0	399.8	399.8	399.8	0.8	0.8	123.43	-5.1	8.5	11.7	10.1	1.59	7.350		
500.0	499.1	499.3	499.3	1.0	1.0	135.39	-5.0	9.1	19.1	16.9	2.13	8.949		
600.0	598.1	599.3	599.2	1.3	1.2	136.34	-4.6	14.3	27.1	24.4	2.62	10.316		
700.0	696.9	700.0	699.3	1.7	1.4	139.68	-3.7	24.8	33.2	30.1	3.11	10.676		
800.0	795.6	800.3	798.5	2.0	1.7	136.38	-2.5	39.6	37.1	33.4	3.66	10.134		
900.0	894.4	900.2	897.2	2.4	2.0	133.09	-1.2	54.9	40.7	36.5	4.26	9.566		
1,000.0	993.1	1,000.2	996.0	2.7	2.4	130.34	0.0	70.2	44.5	39.6	4.90	9.091		
1,100.0	1,091.9	1,100.1	1,094.7	3.1	2.7	128.04	1.3	85.4	48.4	42.8	5.56	8.701		
1,200.0	1,190.6	1,200.0	1,193.4	3.4	3.0	126.07	2.6	100.7	52.4	46.1	6.25	8.382		
1,300.0	1,289.4	1,299.9	1,292.1	3.8	3.4	124.38	3.8	116.0	56.4	49.4	6.94	8.119		
1,400.0	1,388.1	1,399.8	1,390.9	4.2	3.7	122.92	5.1	131.3	60.4	52.7	7.64	7.900		
1,500.0	1,486.9	1,499.7	1,489.6	4.5	4.1	121.64	6.4	146.6	64.5	56.1	8.35	7.716		
1,600.0	1,585.6	1,599.6	1,588.3	4.9	4.4	120.52	7.6	161.9	68.6	59.5	9.07	7.561		
1,700.0	1,684.3	1,699.5	1,687.0	5.3	4.8	119.52	8.9	177.1	72.7	62.9	9.79	7.428		
1,800.0	1,783.1	1,799.4	1,785.7	5.6	5.2	118.63	10.2	192.4	76.8	66.3	10.51	7.313		
1,900.0	1,881.8	1,899.3	1,884.5	6.0	5.5	117.83	11.4	207.7	81.0	69.8	11.23	7.214		
2,000.0	1,980.6	1,999.2	1,983.2	6.4	5.9	117.11	12.7	223.0	85.2	73.2	11.95	7.126		
2,100.0	2,079.3	2,099.1	2,081.9	6.7	6.2	116.45	14.0	238.3	89.4	76.7	12.68	7.049		
2,200.0	2,178.1	2,199.0	2,180.6	7.1	6.6	115.86	15.2	253.6	93.6	80.2	13.40	6.981		
2,300.0	2,276.8	2,298.9	2,279.4	7.5	7.0	115.31	16.5	268.8	97.8	83.6	14.13	6.920		
2,400.0	2,375.6	2,398.9	2,378.1	7.8	7.3	114.81	17.8	284.1	102.0	87.1	14.86	6.865		
2,500.0	2,474.3	2,498.8	2,476.8	8.2	7.7	114.35	19.0	299.4	106.2	90.6	15.58	6.815		
2,600.0	2,573.1	2,598.7	2,575.5	8.6	8.0	113.93	20.3	314.7	110.4	94.1	16.31	6.771		
2,700.0	2,671.8	2,698.6	2,674.3	8.9	8.4	113.54	21.6	330.0	114.7	97.6	17.04	6.730		
2,800.0	2,770.6	2,798.5	2,773.0	9.3	8.8	113.17	22.8	345.2	118.9	101.2	17.77	6.693		
2,900.0	2,869.3	2,898.4	2,871.7	9.7	9.1	112.83	24.1	360.5	123.2	104.7	18.50	6.659		
3,000.0	2,968.1	2,998.3	2,970.4	10.0	9.5	112.51	25.4	375.8	127.4	108.2	19.22	6.628		
3,100.0	3,066.8	3,098.2	3,069.1	10.4	9.9	112.22	26.6	391.1	131.7	111.7	19.95	6.599		
3,200.0	3,165.6	3,198.1	3,167.9	10.8	10.2	111.94	27.9	406.4	135.9	115.2	20.68	6.572		
3,300.0	3,264.3	3,298.0	3,266.6	11.1	10.6	111.68	29.2	421.7	140.2	118.8	21.41	6.548		
3,400.0	3,363.1	3,397.9	3,365.3	11.5	10.9	111.43	30.4	436.9	144.4	122.3	22.14	6.525		
3,500.0	3,461.8	3,497.8	3,464.0	11.9	11.3	111.20	31.7	452.2	148.7	125.8	22.87	6.503		
3,600.0	3,560.6	3,597.7	3,562.8	12.2	11.7	110.98	33.0	467.5	153.0	129.4	23.59	6.483		
3,700.0	3,659.3	3,697.7	3,661.5	12.6	12.0	110.77	34.2	482.8	157.2	132.9	24.32	6.465		
3,800.0	3,758.1	3,797.6	3,760.2	13.0	12.4	110.58	35.5	498.1	161.5	136.5	25.05	6.447		
3,900.0	3,856.8	3,897.5	3,858.9	13.4	12.8	110.39	36.8	513.4	165.8	140.0	25.78	6.431		
4,000.0	3,955.6	3,997.4	3,957.7	13.7	13.1	110.22	38.0	528.6	170.1	143.6	26.51	6.416		
4,100.0	4,054.3	4,097.3	4,056.4	14.1	13.5	110.05	39.3	543.9	174.3	147.1	27.23	6.401		
4,200.0	4,153.1	4,197.2	4,155.1	14.5	13.8	109.89	40.6	559.2	178.6	150.6	27.96	6.388		
4,300.0	4,251.8	4,297.1	4,253.8	14.8	14.2	109.74	41.8	574.5	182.9	154.2	28.69	6.375		
4,400.0	4,350.6	4,397.0	4,352.6	15.2	14.6	109.59	43.1	589.8	187.2	157.8	29.42	6.362		
4,500.0	4,449.3	4,496.9	4,451.3	15.6	14.9	109.45	44.4	605.1	191.4	161.3	30.15	6.351		
4,600.0	4,548.1	4,596.8	4,550.0	15.9	15.3	109.32	45.7	620.3	195.7	164.9	30.87	6.340 SF		

CC - Min centre to center distance or convergent point, SF - min separation factor, ES - min ellipse separation

Cathedral Energy Services

Anticollision Report

Company:	Caerus Oil & Gas (NAD 27)	Local Co-ordinate Reference:	Well PUCKETT 13D-1
Project:	Garfield County, CO	TVD Reference:	KB=22' @ 8446.0usft
Reference Site:	S2-T7S-R97W (Puckett Pad P2)	MD Reference:	KB=22' @ 8446.0usft
Site Error:	0.0usft	North Reference:	True
Reference Well:	PUCKETT 13D-1	Survey Calculation Method:	Minimum Curvature
Well Error:	0.0usft	Output errors are at	2.00 sigma
Reference Wellbore	DD	Database:	USA EDM 5000 Multi Users DB
Reference Design:	Plan #1	Offset TVD Reference:	Offset Datum

Offset Design		S2-T7S-R97W (Puckett Pad P2) - PUCKETT 14B-1 - DD - Plan #1										Offset Site Error:		0.0 usft
Survey Program:		0-ISCSWA MWD										Offset Well Error:		0.0 usft
Reference		Offset		Semi Major Axis			Distance						Warning	
Measured Depth (usft)	Vertical Depth (usft)	Measured Depth (usft)	Vertical Depth (usft)	Reference (usft)	Offset (usft)	Highside Toolface (°)	Offset Wellbore Centre +N/-S (usft)	+E/-W (usft)	Between Centres (usft)	Between Ellipses (usft)	Total Uncertainty Axis	Separation Factor		
0.0	0.0	0.0	0.0	0.0	0.0	177.34	-18.2	0.8	18.2					
100.0	100.0	100.0	100.0	0.1	0.1	177.34	-18.2	0.8	18.2	18.0	0.18	103.937		
200.0	200.0	200.0	200.0	0.3	0.3	177.34	-18.2	0.8	18.2	17.6	0.62	29.162	CC, ES	
300.0	300.0	300.0	300.0	0.5	0.5	140.27	-18.2	0.8	19.3	18.2	1.11	17.479		
400.0	399.8	399.8	399.8	0.8	0.8	149.92	-18.2	0.8	24.7	23.0	1.67	14.758		
500.0	499.1	499.4	499.4	1.0	1.0	139.94	-18.6	3.4	33.7	31.5	2.14	15.716		
600.0	598.1	599.4	599.0	1.3	1.2	131.09	-19.9	11.1	42.3	39.7	2.61	16.238		
700.0	696.9	699.5	698.3	1.7	1.5	130.07	-22.0	24.0	50.1	47.0	3.14	15.982		
800.0	795.6	799.2	796.7	2.0	1.8	126.60	-24.5	39.5	57.6	53.8	3.74	15.392		
900.0	894.4	898.9	895.1	2.4	2.1	123.92	-27.0	55.1	65.2	60.8	4.39	14.841		
1,000.0	993.1	998.5	993.6	2.7	2.4	121.81	-29.5	70.6	72.9	67.8	5.07	14.378		
1,100.0	1,091.9	1,098.2	1,092.0	3.1	2.8	120.10	-32.0	86.1	80.6	74.9	5.76	13.998		
1,200.0	1,190.6	1,197.9	1,190.4	3.4	3.1	118.69	-34.6	101.7	88.5	82.0	6.46	13.687		
1,300.0	1,289.4	1,297.6	1,288.8	3.8	3.5	117.52	-37.1	117.2	96.4	89.2	7.18	13.430		
1,400.0	1,388.1	1,397.2	1,387.3	4.2	3.9	116.52	-39.6	132.7	104.3	96.4	7.89	13.215		
1,500.0	1,486.9	1,496.9	1,485.7	4.5	4.2	115.66	-42.1	148.3	112.2	103.6	8.61	13.035		
1,600.0	1,585.6	1,596.6	1,584.1	4.9	4.6	114.92	-44.7	163.8	120.2	110.9	9.33	12.882		
1,700.0	1,684.3	1,696.2	1,682.5	5.3	5.0	114.26	-47.2	179.3	128.2	118.1	10.05	12.750		
1,800.0	1,783.1	1,795.9	1,780.9	5.6	5.3	113.69	-49.7	194.9	136.2	125.4	10.78	12.636		
1,900.0	1,881.8	1,895.6	1,879.4	6.0	5.7	113.18	-52.2	210.4	144.2	132.7	11.50	12.536		
2,000.0	1,980.6	1,995.3	1,977.8	6.4	6.1	112.72	-54.8	225.9	152.2	140.0	12.23	12.448		
2,100.0	2,079.3	2,094.9	2,076.2	6.7	6.4	112.31	-57.3	241.5	160.2	147.3	12.95	12.371		
2,200.0	2,178.1	2,194.6	2,174.6	7.1	6.8	111.94	-59.8	257.0	168.3	154.6	13.68	12.301		
2,300.0	2,276.8	2,294.3	2,273.0	7.5	7.2	111.60	-62.3	272.5	176.3	161.9	14.41	12.239		
2,400.0	2,375.6	2,393.9	2,371.5	7.8	7.5	111.29	-64.8	288.1	184.4	169.2	15.13	12.184		
2,500.0	2,474.3	2,493.6	2,469.9	8.2	7.9	111.01	-67.4	303.6	192.4	176.6	15.86	12.133	SF	

Cathedral Energy Services

Anticollision Report

Company:	Caerus Oil & Gas (NAD 27)	Local Co-ordinate Reference:	Well PUCKETT 13D-1
Project:	Garfield County, CO	TVD Reference:	KB=22' @ 8446.0usft
Reference Site:	S2-T7S-R97W (Puckett Pad P2)	MD Reference:	KB=22' @ 8446.0usft
Site Error:	0.0usft	North Reference:	True
Reference Well:	PUCKETT 13D-1	Survey Calculation Method:	Minimum Curvature
Well Error:	0.0usft	Output errors are at	2.00 sigma
Reference Wellbore	DD	Database:	USA EDM 5000 Multi Users DB
Reference Design:	Plan #1	Offset TVD Reference:	Offset Datum

Offset Design S2-T7S-R97W (Puckett Pad P2) - PUCKETT 14C-1 - DD - Plan #1												Offset Site Error:	0.0 usft
Survey Program: 0-ISCSWA MWD												Offset Well Error:	0.0 usft
Reference		Offset		Semi Major Axis		Distance							
Measured Depth (usft)	Vertical Depth (usft)	Measured Depth (usft)	Vertical Depth (usft)	Reference (usft)	Offset (usft)	Highside Toolface (°)	Offset Wellbore Centre +N/-S (usft)	+E/-W (usft)	Between Centres (usft)	Between Ellipses (usft)	Total Uncertainty Axis	Separation Factor	Warning
0.0	0.0	0.0	0.0	0.0	0.0	-166.29	-32.4	-7.9	33.4				
100.0	100.0	100.0	100.0	0.1	0.1	-166.29	-32.4	-7.9	33.4	33.2	0.18	190.268	
200.0	200.0	200.0	200.0	0.3	0.3	-166.29	-32.4	-7.9	33.4	32.7	0.62	53.385 CC, ES	
300.0	300.0	300.0	300.0	0.5	0.5	154.77	-32.4	-7.9	34.7	33.6	1.12	31.025	
400.0	399.8	399.7	399.7	0.8	0.8	157.72	-32.6	-7.3	40.7	39.1	1.69	24.165	
500.0	499.1	499.0	498.9	1.0	1.0	141.05	-34.6	-2.5	50.7	48.5	2.13	23.743	
600.0	598.1	598.3	597.6	1.3	1.2	128.30	-38.4	7.0	61.2	58.6	2.61	23.455	
700.0	696.9	697.4	695.6	1.7	1.5	125.95	-44.1	21.2	72.1	68.9	3.18	22.683	
800.0	795.6	796.7	793.5	2.0	1.8	123.28	-50.3	36.5	83.3	79.5	3.81	21.851	
900.0	894.4	896.0	891.4	2.4	2.2	121.25	-56.5	51.9	94.7	90.2	4.48	21.123	
1,000.0	993.1	995.4	989.3	2.7	2.5	119.66	-62.7	67.3	106.1	101.0	5.17	20.521	
1,100.0	1,091.9	1,094.7	1,087.2	3.1	2.9	118.38	-68.9	82.7	117.7	111.8	5.87	20.031	
1,200.0	1,190.6	1,194.0	1,185.1	3.4	3.3	117.32	-75.1	98.0	129.2	122.6	6.58	19.631	
1,300.0	1,289.4	1,293.3	1,283.0	3.8	3.7	116.44	-81.3	113.4	140.8	133.5	7.30	19.299	
1,400.0	1,388.1	1,392.6	1,380.9	4.2	4.0	115.70	-87.5	128.8	152.5	144.4	8.01	19.022	
1,500.0	1,486.9	1,491.9	1,478.8	4.5	4.4	115.06	-93.7	144.2	164.1	155.4	8.73	18.789	
1,600.0	1,585.6	1,591.2	1,576.7	4.9	4.8	114.50	-99.9	159.6	175.8	166.3	9.46	18.589	
1,700.0	1,684.3	1,690.5	1,674.7	5.3	5.2	114.01	-106.1	174.9	187.5	177.3	10.18	18.417	
1,800.0	1,783.1	1,789.8	1,772.6	5.6	5.6	113.58	-112.3	190.3	199.1	188.2	10.90	18.268 SF	

Cathedral Energy Services

Anticollision Report

Company:	Caerus Oil & Gas (NAD 27)	Local Co-ordinate Reference:	Well PUCKETT 13D-1
Project:	Garfield County, CO	TVD Reference:	KB=22' @ 8446.0usft
Reference Site:	S2-T7S-R97W (Puckett Pad P2)	MD Reference:	KB=22' @ 8446.0usft
Site Error:	0.0usft	North Reference:	True
Reference Well:	PUCKETT 13D-1	Survey Calculation Method:	Minimum Curvature
Well Error:	0.0usft	Output errors are at	2.00 sigma
Reference Wellbore	DD	Database:	USA EDM 5000 Multi Users DB
Reference Design:	Plan #1	Offset TVD Reference:	Offset Datum

Offset Design S2-T7S-R97W (Puckett Pad P2) - PUCKETT 14D-1 - DD - Plan #1													Offset Site Error:	0.0 usft
Survey Program: 0-ISCSWA MWD													Offset Well Error:	0.0 usft
Reference		Offset		Semi Major Axis			Distance					Separation Factor	Warning	
Measured Depth (usft)	Vertical Depth (usft)	Measured Depth (usft)	Vertical Depth (usft)	Reference (usft)	Offset (usft)	Highside Toolface (°)	Offset Wellbore Centre +N/-S (usft)	+E/-W (usft)	Between Centres (usft)	Between Ellipses (usft)	Total Uncertainty Axis			
0.0	0.0	0.0	0.0	0.0	0.0	-161.13	-46.2	-15.8	48.9					
100.0	100.0	100.0	100.0	0.1	0.1	-161.13	-46.2	-15.8	48.9	48.7	0.18	278.783		
200.0	200.0	200.0	200.0	0.3	0.3	-161.13	-46.2	-15.8	48.9	48.3	0.62	78.220 CC, ES		
300.0	300.0	300.0	300.0	0.5	0.5	159.46	-46.2	-15.8	50.3	49.1	1.12	44.828		
400.0	399.8	398.9	398.9	0.8	0.7	159.21	-47.8	-13.7	57.1	55.4	1.68	33.929		
500.0	499.1	497.2	496.9	1.0	1.0	140.39	-52.2	-7.6	69.1	66.9	2.14	32.245		
600.0	598.1	595.0	593.8	1.3	1.2	126.36	-59.6	2.6	82.9	80.2	2.63	31.459		
700.0	696.9	692.4	689.6	1.7	1.6	124.00	-69.9	16.6	98.4	95.2	3.24	30.420		
800.0	795.6	790.9	786.3	2.0	1.9	121.49	-81.2	32.1	114.8	110.9	3.89	29.490		
900.0	894.4	889.5	882.9	2.4	2.3	119.60	-92.5	47.6	131.3	126.7	4.58	28.680		
1,000.0	993.1	988.0	979.6	2.7	2.7	118.14	-103.8	63.1	147.9	142.6	5.28	28.011		
1,100.0	1,091.9	1,086.5	1,076.3	3.1	3.2	116.97	-115.1	78.6	164.6	158.6	5.99	27.466		
1,200.0	1,190.6	1,185.1	1,172.9	3.4	3.6	116.02	-126.4	94.1	181.4	174.7	6.71	27.019		
1,300.0	1,289.4	1,283.6	1,269.6	3.8	4.0	115.23	-137.7	109.6	198.2	190.7	7.44	26.650 SF		

Cathedral Energy Services

Anticollision Report

Company:	Caerus Oil & Gas (NAD 27)	Local Co-ordinate Reference:	Well PUCKETT 13D-1
Project:	Garfield County, CO	TVD Reference:	KB=22' @ 8446.0usft
Reference Site:	S2-T7S-R97W (Puckett Pad P2)	MD Reference:	KB=22' @ 8446.0usft
Site Error:	0.0usft	North Reference:	True
Reference Well:	PUCKETT 13D-1	Survey Calculation Method:	Minimum Curvature
Well Error:	0.0usft	Output errors are at	2.00 sigma
Reference Wellbore	DD	Database:	USA EDM 5000 Multi Users DB
Reference Design:	Plan #1	Offset TVD Reference:	Offset Datum

Offset Design S2-T7S-R97W (Puckett Pad P2) - PUCKETT 24A-1 - DD - Plan #1													Offset Site Error: 0.0 usft	
Survey Program: 0-ISCSWA MWD													Offset Well Error: 0.0 usft	
Reference		Offset		Semi Major Axis			Distance							Warning
Measured Depth (usft)	Vertical Depth (usft)	Measured Depth (usft)	Vertical Depth (usft)	Reference (usft)	Offset (usft)	Highside Toolface (°)	Offset Wellbore Centre +N/-S (usft)	+E/-W (usft)	Between Centres (usft)	Between Ellipses (usft)	Total Uncertainty Axis	Separation Factor		
0.0	0.0	0.0	0.0	0.0	0.0	156.28	-10.9	4.8	11.9					
100.0	100.0	100.0	100.0	0.1	0.1	156.28	-10.9	4.8	11.9	11.8	0.18	68.049		
200.0	200.0	200.0	200.0	0.3	0.3	156.28	-10.9	4.8	11.9	11.3	0.62	19.093	CC, ES	
300.0	300.0	300.0	300.0	0.5	0.5	122.25	-10.9	4.8	12.7	11.6	1.09	11.615		
400.0	399.8	399.6	399.6	0.8	0.8	132.47	-11.1	7.4	17.4	15.8	1.61	10.803	SF	
500.0	499.1	499.1	498.7	1.0	1.0	118.57	-11.8	15.1	25.5	23.4	2.07	12.325		
600.0	598.1	598.8	597.6	1.3	1.3	106.76	-12.6	28.0	32.3	29.7	2.59	12.467		
700.0	696.9	698.5	695.7	1.7	1.6	102.33	-12.9	46.1	38.6	35.3	3.25	11.870		
800.0	795.6	797.7	792.1	2.0	2.0	92.74	-13.0	69.1	45.9	41.9	3.98	11.525		
900.0	894.4	895.7	886.2	2.4	2.5	81.12	-12.7	96.7	56.2	51.5	4.74	11.864		
1,000.0	993.1	992.3	977.3	2.7	3.1	70.00	-12.0	128.5	71.0	65.5	5.45	13.024		
1,100.0	1,091.9	1,090.0	1,068.8	3.1	3.8	61.72	-11.2	162.8	89.0	82.9	6.10	14.594		
1,200.0	1,190.6	1,187.7	1,160.3	3.4	4.5	56.28	-10.4	197.0	108.2	101.5	6.72	16.113		
1,300.0	1,289.4	1,285.4	1,251.8	3.8	5.1	52.49	-9.6	231.3	128.1	120.8	7.33	17.484		
1,400.0	1,388.1	1,383.1	1,343.3	4.2	5.8	49.72	-8.8	265.5	148.4	140.5	7.94	18.695		
1,500.0	1,486.9	1,480.8	1,434.8	4.5	6.5	47.62	-8.0	299.7	169.0	160.4	8.55	19.760		
1,600.0	1,585.6	1,578.5	1,526.3	4.9	7.2	45.98	-7.2	334.0	189.7	180.5	9.17	20.697		

Cathedral Energy Services

Anticollision Report

Company:	Caerus Oil & Gas (NAD 27)	Local Co-ordinate Reference:	Well PUCKETT 13D-1
Project:	Garfield County, CO	TVD Reference:	KB=22' @ 8446.0usft
Reference Site:	S2-T7S-R97W (Puckett Pad P2)	MD Reference:	KB=22' @ 8446.0usft
Site Error:	0.0usft	North Reference:	True
Reference Well:	PUCKETT 13D-1	Survey Calculation Method:	Minimum Curvature
Well Error:	0.0usft	Output errors are at	2.00 sigma
Reference Wellbore	DD	Database:	USA EDM 5000 Multi Users DB
Reference Design:	Plan #1	Offset TVD Reference:	Offset Datum

Offset Design S2-T7S-R97W (Puckett Pad P2) - PUCKETT 24C-1 - DD - Plan #1												Offset Site Error:	0.0 usft
Survey Program: 0-ISWWSA MWD												Offset Well Error:	0.0 usft
Reference		Offset		Semi Major Axis		Distance							
Measured Depth (usft)	Vertical Depth (usft)	Measured Depth (usft)	Vertical Depth (usft)	Reference (usft)	Offset (usft)	Highside Toolface (°)	Offset Wellbore Centre +N/-S (usft)	+E/-W (usft)	Between Centres (usft)	Between Ellipses (usft)	Total Uncertainty Axis	Separation Factor	Warning
0.0	0.0	0.0	0.0	0.0	0.0	-171.06	-25.1	-4.0	25.4				
100.0	100.0	100.0	100.0	0.1	0.1	-171.06	-25.1	-4.0	25.4	25.3	0.18	145.060	
200.0	200.0	200.0	200.0	0.3	0.3	-171.06	-25.1	-4.0	25.4	24.8	0.62	40.700 CC, ES	
300.0	300.0	299.9	299.9	0.5	0.5	149.15	-25.3	-3.3	26.7	25.6	1.11	24.177	
400.0	399.8	399.6	399.4	0.8	0.7	145.83	-26.5	1.7	32.8	31.2	1.65	19.929	
500.0	499.1	498.7	498.0	1.0	1.0	124.80	-29.0	11.7	42.6	40.5	2.11	20.212	
600.0	598.1	597.6	595.7	1.3	1.3	109.30	-32.7	26.7	52.4	49.8	2.65	19.786	
700.0	696.9	696.0	692.0	1.7	1.7	104.67	-37.5	46.4	63.2	59.9	3.33	18.962	
800.0	795.6	793.4	786.1	2.0	2.2	97.93	-43.5	70.6	76.4	72.3	4.09	18.687 SF	
900.0	894.4	889.3	877.5	2.4	2.7	90.64	-50.5	99.0	93.0	88.1	4.87	19.086	
1,000.0	993.1	984.3	966.4	2.7	3.4	83.77	-58.5	131.2	113.6	108.0	5.66	20.088	
1,100.0	1,091.9	1,081.1	1,056.6	3.1	4.1	78.56	-66.9	165.2	136.2	129.8	6.42	21.232	
1,200.0	1,190.6	1,177.8	1,146.9	3.4	4.8	74.84	-75.2	199.2	159.7	152.5	7.15	22.315	
1,300.0	1,289.4	1,274.6	1,237.1	3.8	5.5	72.07	-83.6	233.2	183.5	175.7	7.88	23.286	

Cathedral Energy Services

Anticollision Report

Company:	Caerus Oil & Gas (NAD 27)	Local Co-ordinate Reference:	Well PUCKETT 13D-1
Project:	Garfield County, CO	TVD Reference:	KB=22' @ 8446.0usft
Reference Site:	S2-T7S-R97W (Puckett Pad P2)	MD Reference:	KB=22' @ 8446.0usft
Site Error:	0.0usft	North Reference:	True
Reference Well:	PUCKETT 13D-1	Survey Calculation Method:	Minimum Curvature
Well Error:	0.0usft	Output errors are at	2.00 sigma
Reference Wellbore	DD	Database:	USA EDM 5000 Multi Users DB
Reference Design:	Plan #1	Offset TVD Reference:	Offset Datum

Offset Design S2-T7S-R97W (Puckett Pad P2) - PUCKETT 24D-1 - DD - Plan #1													Offset Site Error: 0.0 usft	
Survey Program: 0-ISWWSA MWD													Offset Well Error: 0.0 usft	
Reference				Offset		Semi Major Axis		Distance						Warning
Measured Depth (usft)	Vertical Depth (usft)	Measured Depth (usft)	Vertical Depth (usft)	Reference (usft)	Offset (usft)	Highside Toolface (°)	Offset Wellbore Centre +N/-S (usft)	+E/-W (usft)	Between Centres (usft)	Between Ellipses (usft)	Total Uncertainty Axis	Separation Factor		
0.0	0.0	0.0	0.0	0.0	0.0	-163.22	-39.3	-11.9	41.1					
100.0	100.0	100.0	100.0	0.1	0.1	-163.22	-39.3	-11.9	41.1	40.9	0.18	234.296		
200.0	200.0	200.0	200.0	0.3	0.3	-163.22	-39.3	-11.9	41.1	40.5	0.62	65.738	CC, ES	
300.0	300.0	299.8	299.7	0.5	0.5	154.04	-40.2	-9.4	42.7	41.5	1.11	38.585		
400.0	399.8	399.0	398.7	0.8	0.8	148.30	-43.0	-2.2	49.7	48.0	1.67	29.753		
500.0	499.1	497.5	496.3	1.0	1.0	125.96	-47.5	9.8	61.2	59.1	2.16	28.413		
600.0	598.1	595.4	592.6	1.3	1.4	109.53	-53.7	26.3	73.6	70.9	2.72	27.039		
700.0	696.9	692.6	687.2	1.7	1.8	105.19	-61.6	47.3	87.7	84.2	3.43	25.544		
800.0	795.6	788.5	779.2	2.0	2.3	99.72	-71.1	72.3	104.5	100.3	4.20	24.886	SF	
900.0	894.4	882.5	868.1	2.4	2.9	94.03	-81.9	101.0	125.0	120.0	5.00	25.005		
1,000.0	993.1	977.7	956.9	2.7	3.6	88.82	-94.1	133.2	148.7	142.9	5.80	25.655		
1,100.0	1,091.9	1,074.0	1,046.6	3.1	4.3	84.94	-106.4	165.9	173.4	166.8	6.58	26.345		
1,200.0	1,190.6	1,170.4	1,136.3	3.4	5.0	82.04	-118.8	198.6	198.7	191.4	7.35	27.027		

Cathedral Energy Services

Anticollision Report

Company:	Caerus Oil & Gas (NAD 27)	Local Co-ordinate Reference:	Well PUCKETT 13D-1
Project:	Garfield County, CO	TVD Reference:	KB=22' @ 8446.0usft
Reference Site:	S2-T7S-R97W (Puckett Pad P2)	MD Reference:	KB=22' @ 8446.0usft
Site Error:	0.0usft	North Reference:	True
Reference Well:	PUCKETT 13D-1	Survey Calculation Method:	Minimum Curvature
Well Error:	0.0usft	Output errors are at	2.00 sigma
Reference Wellbore	DD	Database:	USA EDM 5000 Multi Users DB
Reference Design:	Plan #1	Offset TVD Reference:	Offset Datum

Offset Design S2-T7S-R97W (Puckett Pad P2) - PUCKETT 43C-2 - DD - Plan #1													Offset Site Error:	0.0 usft
Survey Program: 0-ISCSWA MWD													Offset Well Error:	0.0 usft
Reference		Offset		Semi Major Axis			Distance							Warning
Measured Depth (usft)	Vertical Depth (usft)	Measured Depth (usft)	Vertical Depth (usft)	Reference (usft)	Offset (usft)	Highside Toolface (°)	Offset Wellbore Centre +N/-S (usft)	+E/-W (usft)	Between Centres (usft)	Between Ellipses (usft)	Total Uncertainty Axis	Separation Factor		
0.0	0.0	0.0	0.0	0.0	0.0	-145.83	-5.8	-4.0	7.0					
100.0	100.0	100.0	100.0	0.1	0.1	-145.83	-5.8	-4.0	7.0	6.9	0.18	40.143		
200.0	200.0	200.0	200.0	0.3	0.3	-145.83	-5.8	-4.0	7.0	6.4	0.62	11.263 CC, ES		
300.0	300.0	300.0	300.0	0.5	0.5	176.27	-5.7	-4.1	8.5	7.4	1.13	7.544 SF		
400.0	399.8	399.6	399.5	0.8	0.8	-167.37	-3.2	-7.1	15.4	13.7	1.71	9.017		
500.0	499.1	498.0	497.5	1.0	1.0	-168.81	2.5	-13.9	29.3	27.1	2.27	12.944		
600.0	598.1	594.1	592.7	1.3	1.3	-168.67	11.2	-24.4	51.4	48.6	2.86	18.018		
700.0	696.9	690.3	687.6	1.7	1.6	-161.91	21.2	-36.3	77.8	74.5	3.31	23.481		
800.0	795.6	786.5	782.5	2.0	1.9	-158.58	31.1	-48.2	104.7	100.9	3.79	27.588		
900.0	894.4	882.7	877.4	2.4	2.3	-156.61	41.1	-60.2	131.7	127.4	4.29	30.680		
1,000.0	993.1	978.9	972.4	2.7	2.6	-155.32	51.0	-72.1	158.9	154.1	4.81	33.058		
1,100.0	1,091.9	1,075.1	1,067.3	3.1	3.0	-154.40	61.0	-84.1	186.1	180.8	5.33	34.931		

Cathedral Energy Services

Anticollision Report

Company:	Caerus Oil & Gas (NAD 27)	Local Co-ordinate Reference:	Well PUCKETT 13D-1
Project:	Garfield County, CO	TVD Reference:	KB=22' @ 8446.0usft
Reference Site:	S2-T7S-R97W (Puckett Pad P2)	MD Reference:	KB=22' @ 8446.0usft
Site Error:	0.0usft	North Reference:	True
Reference Well:	PUCKETT 13D-1	Survey Calculation Method:	Minimum Curvature
Well Error:	0.0usft	Output errors are at	2.00 sigma
Reference Wellbore	DD	Database:	USA EDM 5000 Multi Users DB
Reference Design:	Plan #1	Offset TVD Reference:	Offset Datum

Offset Design S2-T7S-R97W (Puckett Pad P2) - PUCKETT 43D-2 - DD - Plan #1												Offset Site Error:	0.0 usft
Survey Program: 0-ISCSWA MWD												Offset Well Error:	0.0 usft
Reference		Offset		Semi Major Axis			Distance						
Measured Depth (usft)	Vertical Depth (usft)	Measured Depth (usft)	Vertical Depth (usft)	Reference (usft)	Offset (usft)	Highside Toolface (°)	Offset Wellbore Centre +N/-S (usft)	+E/-W (usft)	Between Centres (usft)	Between Ellipses (usft)	Total Uncertainty Axis	Separation Factor	Warning
0.0	0.0	0.0	0.0	0.0	0.0	-148.90	-13.1	-7.9	15.3				
100.0	100.0	100.0	100.0	0.1	0.1	-148.90	-13.1	-7.9	15.3	15.1	0.18	87.286	
200.0	200.0	200.0	200.0	0.3	0.3	-148.90	-13.1	-7.9	15.3	14.7	0.62	24.490 CC, ES	
300.0	300.0	300.0	300.0	0.5	0.5	171.87	-13.1	-7.9	16.8	15.6	1.13	14.880	
400.0	399.8	399.6	399.5	0.8	0.8	177.64	-12.5	-9.2	23.5	21.8	1.71	13.727 SF	
500.0	499.1	497.9	497.7	1.0	1.0	173.44	-9.8	-15.0	36.7	34.4	2.25	16.315	
600.0	598.1	594.0	593.1	1.3	1.2	174.45	-5.2	-25.1	57.1	54.3	2.81	20.305	
700.0	696.9	690.3	688.6	1.7	1.5	-177.14	0.3	-37.0	82.2	78.9	3.26	25.206	
800.0	795.6	786.7	784.0	2.0	1.8	-172.69	5.7	-48.9	108.1	104.4	3.71	29.112	
900.0	894.4	883.0	879.4	2.4	2.1	-169.96	11.2	-60.9	134.5	130.3	4.18	32.161	
1,000.0	993.1	979.3	974.8	2.7	2.4	-168.13	16.7	-72.8	161.0	156.3	4.66	34.559	
1,100.0	1,091.9	1,075.6	1,070.2	3.1	2.7	-166.82	22.2	-84.7	187.6	182.5	5.14	36.476	

Cathedral Energy Services

Anticollision Report

Company:	Caerus Oil & Gas (NAD 27)	Local Co-ordinate Reference:	Well PUCKETT 13D-1
Project:	Garfield County, CO	TVD Reference:	KB=22' @ 8446.0usft
Reference Site:	S2-T7S-R97W (Puckett Pad P2)	MD Reference:	KB=22' @ 8446.0usft
Site Error:	0.0usft	North Reference:	True
Reference Well:	PUCKETT 13D-1	Survey Calculation Method:	Minimum Curvature
Well Error:	0.0usft	Output errors are at	2.00 sigma
Reference Wellbore	DD	Database:	USA EDM 5000 Multi Users DB
Reference Design:	Plan #1	Offset TVD Reference:	Offset Datum

Offset Design												Offset Site Error:	0.0 usft
S2-T7S-R97W (Puckett Pad P2) - PUCKETT 44A-2 - DD - Plan #1												Offset Well Error:	0.0 usft
Survey Program: 0-ISCSWA MWD													
Reference		Offset		Semi Major Axis		Distance							
Measured Depth (usft)	Vertical Depth (usft)	Measured Depth (usft)	Vertical Depth (usft)	Reference (usft)	Offset (usft)	Highside Toolface (°)	Offset Wellbore Centre +N/-S (usft)	+E/-W (usft)	Between Centres (usft)	Between Ellipses (usft)	Total Uncertainty Axis	Separation Factor	Warning
0.0	0.0	0.0	0.0	0.0	0.0	-149.37	-20.0	-11.9	23.3				
100.0	100.0	100.0	100.0	0.1	0.1	-149.37	-20.0	-11.9	23.3	23.1	0.18	132.757	
200.0	200.0	200.0	200.0	0.3	0.3	-149.37	-20.0	-11.9	23.3	22.6	0.62	37.249 CC, ES	
300.0	300.0	300.0	300.0	0.5	0.5	171.18	-20.0	-11.9	24.7	23.6	1.13	21.960	
400.0	399.8	399.6	399.6	0.8	0.8	173.24	-20.0	-12.0	31.3	29.6	1.71	18.256 SF	
500.0	499.1	497.5	497.5	1.0	1.0	164.05	-19.7	-15.8	44.2	41.9	2.22	19.885	
600.0	598.1	593.2	592.7	1.3	1.2	162.53	-19.1	-24.3	63.8	61.0	2.76	23.145	
700.0	696.9	688.9	687.7	1.7	1.4	170.85	-18.2	-36.0	88.8	85.5	3.22	27.562	
800.0	795.6	785.1	783.1	2.0	1.7	175.55	-17.3	-48.0	114.8	111.2	3.66	31.371	
900.0	894.4	881.3	878.6	2.4	2.0	178.51	-16.3	-59.9	141.4	137.3	4.11	34.406	
1,000.0	993.1	977.5	974.0	2.7	2.3	-179.47	-15.4	-71.8	168.2	163.6	4.57	36.831	
1,100.0	1,091.9	1,073.7	1,069.5	3.1	2.6	-178.00	-14.5	-83.7	195.1	190.0	5.03	38.792	

Cathedral Energy Services

Anticollision Report

Company:	Caerus Oil & Gas (NAD 27)	Local Co-ordinate Reference:	Well PUCKETT 13D-1
Project:	Garfield County, CO	TVD Reference:	KB=22' @ 8446.0usft
Reference Site:	S2-T7S-R97W (Puckett Pad P2)	MD Reference:	KB=22' @ 8446.0usft
Site Error:	0.0usft	North Reference:	True
Reference Well:	PUCKETT 13D-1	Survey Calculation Method:	Minimum Curvature
Well Error:	0.0usft	Output errors are at	2.00 sigma
Reference Wellbore	DD	Database:	USA EDM 5000 Multi Users DB
Reference Design:	Plan #1	Offset TVD Reference:	Offset Datum

Offset Design S2-T7S-R97W (Puckett Pad P2) - PUCKETT 44B-2 - DD - Plan #1													Offset Site Error:	0.0 usft
Survey Program: 0-ISCSWA MWD													Offset Well Error:	0.0 usft
Reference		Offset		Semi Major Axis			Distance							Warning
Measured Depth (usft)	Vertical Depth (usft)	Measured Depth (usft)	Vertical Depth (usft)	Reference (usft)	Offset (usft)	Highside Toolface (°)	Offset Wellbore Centre +N/-S (usft)	+E/-W (usft)	Between Centres (usft)	Between Ellipses (usft)	Total Uncertainty Axis	Separation Factor		
0.0	0.0	0.0	0.0	0.0	0.0	-149.06	-27.3	-16.4	31.8					
100.0	100.0	100.0	100.0	0.1	0.1	-149.06	-27.3	-16.4	31.8	31.7	0.18	181.640		
200.0	200.0	200.0	200.0	0.3	0.3	-149.06	-27.3	-16.4	31.8	31.2	0.62	50.964	CC, ES	
300.0	300.0	300.0	300.0	0.5	0.5	171.34	-27.3	-16.4	33.3	32.2	1.13	29.570		
400.0	399.8	398.5	398.5	0.8	0.7	174.00	-27.7	-17.7	40.9	39.2	1.71	23.874	SF	
500.0	499.1	495.1	494.9	1.0	1.0	163.43	-29.5	-23.6	56.8	54.6	2.23	25.455		
600.0	598.1	589.6	588.7	1.3	1.2	158.74	-32.7	-33.8	80.1	77.3	2.77	28.867		
700.0	696.9	685.5	683.9	1.7	1.5	164.61	-36.3	-45.5	106.8	103.6	3.22	33.217		
800.0	795.6	781.4	779.0	2.0	1.8	168.12	-39.9	-57.2	134.2	130.5	3.65	36.732		
900.0	894.4	877.3	874.1	2.4	2.1	170.44	-43.6	-69.0	161.9	157.8	4.10	39.490		
1,000.0	993.1	973.2	969.3	2.7	2.4	172.08	-47.2	-80.7	189.7	185.2	4.55	41.674		

Cathedral Energy Services

Anticollision Report

Company:	Caerus Oil & Gas (NAD 27)	Local Co-ordinate Reference:	Well PUCKETT 13D-1
Project:	Garfield County, CO	TVD Reference:	KB=22' @ 8446.0usft
Reference Site:	S2-T7S-R97W (Puckett Pad P2)	MD Reference:	KB=22' @ 8446.0usft
Site Error:	0.0usft	North Reference:	True
Reference Well:	PUCKETT 13D-1	Survey Calculation Method:	Minimum Curvature
Well Error:	0.0usft	Output errors are at	2.00 sigma
Reference Wellbore	DD	Database:	USA EDM 5000 Multi Users DB
Reference Design:	Plan #1	Offset TVD Reference:	Offset Datum

Offset Design S2-T7S-R97W (Puckett Pad P2) - PUCKETT 44C-2 - DD - Plan #1													Offset Site Error:	0.0 usft
Survey Program: 0-ISWWSA MWD													Offset Well Error:	0.0 usft
Reference		Offset		Semi Major Axis			Distance						Warning	
Measured Depth (usft)	Vertical Depth (usft)	Measured Depth (usft)	Vertical Depth (usft)	Reference (usft)	Offset (usft)	Highside Toolface (°)	Offset Wellbore Centre +N/-S (usft)	+E/-W (usft)	Between Centres (usft)	Between Ellipses (usft)	Total Uncertainty Axis	Separation Factor		
0.0	0.0	0.0	0.0	0.0	0.0	-149.30	-34.2	-20.3	39.8					
100.0	100.0	100.0	100.0	0.1	0.1	-149.30	-34.2	-20.3	39.8	39.6	0.18	227.090		
200.0	200.0	200.0	200.0	0.3	0.3	-149.30	-34.2	-20.3	39.8	39.2	0.62	63.716 CC		
203.5	203.5	203.5	203.5	0.3	0.3	170.70	-34.2	-20.3	39.8	39.2	0.64	61.993 ES		
300.0	300.0	299.5	299.5	0.5	0.5	171.11	-34.3	-20.5	41.4	40.3	1.12	36.895		
400.0	399.8	396.8	396.7	0.8	0.7	173.87	-36.5	-23.5	51.4	49.7	1.71	30.094 SF		
500.0	499.1	491.9	491.5	1.0	1.0	161.32	-41.3	-30.4	70.5	68.3	2.24	31.425		
600.0	598.1	585.4	584.1	1.3	1.2	154.11	-48.6	-40.8	96.6	93.8	2.78	34.746		
700.0	696.9	680.8	678.4	1.7	1.5	158.51	-56.7	-52.3	125.4	122.2	3.23	38.865		
800.0	795.6	776.2	772.8	2.0	1.8	161.27	-64.8	-63.9	154.7	151.0	3.67	42.094		
900.0	894.4	871.6	867.1	2.4	2.2	163.15	-72.9	-75.4	184.2	180.0	4.13	44.567		

Cathedral Energy Services

Anticollision Report

Company:	Caerus Oil & Gas (NAD 27)	Local Co-ordinate Reference:	Well PUCKETT 13D-1
Project:	Garfield County, CO	TVD Reference:	KB=22' @ 8446.0usft
Reference Site:	S2-T7S-R97W (Puckett Pad P2)	MD Reference:	KB=22' @ 8446.0usft
Site Error:	0.0usft	North Reference:	True
Reference Well:	PUCKETT 13D-1	Survey Calculation Method:	Minimum Curvature
Well Error:	0.0usft	Output errors are at	2.00 sigma
Reference Wellbore	DD	Database:	USA EDM 5000 Multi Users DB
Reference Design:	Plan #1	Offset TVD Reference:	Offset Datum

Offset Design S2-T7S-R97W (Puckett Pad P2) - PUCKETT 44D-2 - DD - Plan #1													Offset Site Error:	0.0 usft
Survey Program: 0-ISCSWA MWD													Offset Well Error:	0.0 usft
Reference		Offset		Semi Major Axis			Distance						Warning	
Measured Depth (usft)	Vertical Depth (usft)	Measured Depth (usft)	Vertical Depth (usft)	Reference (usft)	Offset (usft)	Highside Toolface (°)	Offset Wellbore Centre +N/-S (usft)	+E/-W (usft)	Between Centres (usft)	Between Ellipses (usft)	Total Uncertainty Axis	Separation Factor		
0.0	0.0	0.0	0.0	0.0	0.0	-149.01	-40.4	-24.3	47.2					
100.0	100.0	100.0	100.0	0.1	0.1	-149.01	-40.4	-24.3	47.2	47.0	0.18	268.949		
200.0	200.0	200.0	200.0	0.3	0.3	-149.01	-40.4	-24.3	47.2	46.5	0.62	75.460 CC, ES		
300.0	300.0	298.1	298.1	0.5	0.5	171.55	-41.5	-25.2	50.0	48.9	1.12	44.719		
400.0	399.8	394.5	394.3	0.8	0.7	173.42	-46.0	-29.3	62.7	61.0	1.73	36.297 SF		
500.0	499.1	488.4	487.6	1.0	1.0	159.13	-53.8	-36.5	84.5	82.3	2.26	37.333		
600.0	598.1	580.0	578.0	1.3	1.3	150.10	-64.7	-46.4	113.1	110.3	2.79	40.470		
700.0	696.9	674.7	671.1	1.7	1.6	153.46	-77.2	-57.8	144.5	141.2	3.26	44.354		
800.0	795.6	769.4	764.3	2.0	2.0	155.63	-89.6	-69.1	176.2	172.4	3.72	47.363		

Cathedral Energy Services

Anticollision Report

Company:	Caerus Oil & Gas (NAD 27)	Local Co-ordinate Reference:	Well PUCKETT 13D-1
Project:	Garfield County, CO	TVD Reference:	KB=22' @ 8446.0usft
Reference Site:	S2-T7S-R97W (Puckett Pad P2)	MD Reference:	KB=22' @ 8446.0usft
Site Error:	0.0usft	North Reference:	True
Reference Well:	PUCKETT 13D-1	Survey Calculation Method:	Minimum Curvature
Well Error:	0.0usft	Output errors are at	2.00 sigma
Reference Wellbore	DD	Database:	USA EDM 5000 Multi Users DB
Reference Design:	Plan #1	Offset TVD Reference:	Offset Datum

Reference Depths are relative to KB=22' @ 8446.0usft
Offset Depths are relative to Offset Datum
Central Meridian is -105.500000 °

Coordinates are relative to: PUCKETT 13D-1
Coordinate System is US State Plane 1927 (Exact solution), Colorado Central 502
Grid Convergence at Surface is: -1.69°

