

T10N, R57W, 6th. P.M.

WHITING OIL & GAS CORP.

1917 Brass Cap,  
Flush with Ground  
Lat: 40.817025°  
Long: 103.784622°

1917 Brass Cap,  
0.2' High  
Lat: 40.817133°  
Long: 103.765389°

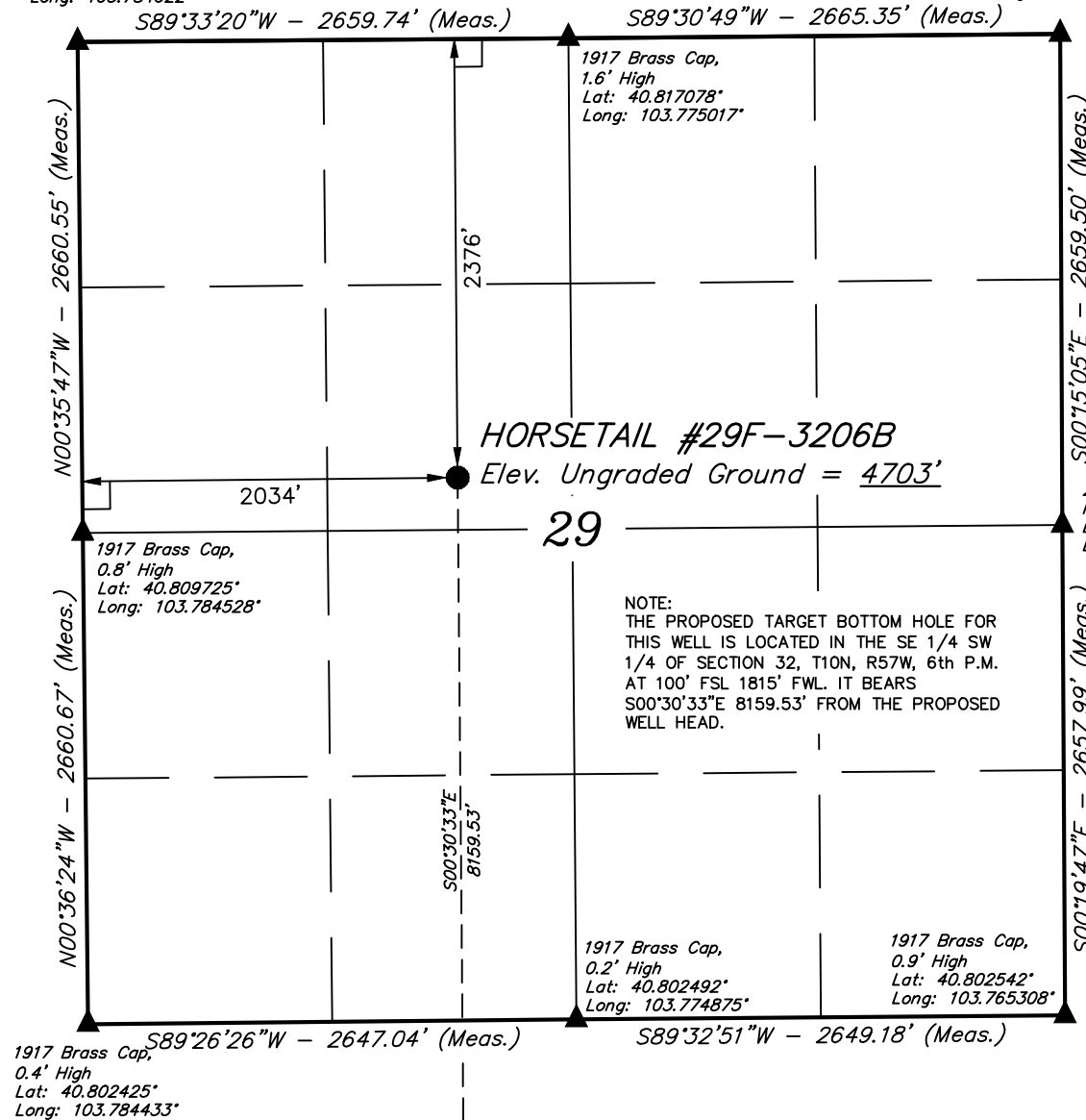
Well location, HORSETAIL #29F-3206B (SURFACE LOCATION), located as shown in the SE 1/4 NW 1/4 of Section 29, T10N, R57W, 6th. P.M., Weld County, Colorado.

### BASIS OF ELEVATION

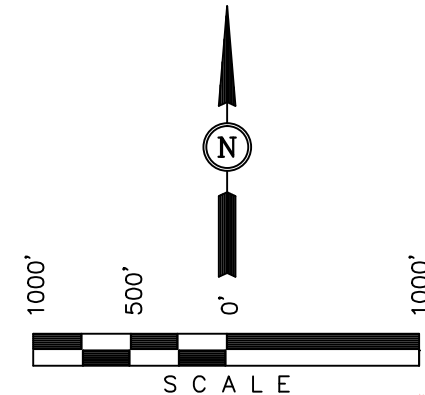
SPOT ELEVATION LOCATED AT THE NORTHEAST CORNER OF SECTION 15, T9N, R58W, 6th P.M. TAKEN FROM THE GATEHOOK SPRING, QUADRANGLE, COLORADO, WELD COUNTY, 7.5 MINUTE QUAD (TOPOGRAPHIC MAP) PUBLISHED BY THE UNITED STATES DEPARTMENT OF THE INTERIOR, GEOLOGICAL SURVEY. SAID ELEVATION IS MARKED AS BEING 4679 FEET.

### BASIS OF BEARINGS

BASIS OF BEARINGS IS A G.P.S. OBSERVATION.



2012 Alum Cap,  
Flush with Ground  
Lat: 40.809836°  
Long: 103.765356°



### CERTIFICATION

THIS IS TO CERTIFY THAT THE ABOVE PLAT WAS PREPARED FROM FIELD NOTES OF ACTUAL SURVEYS MADE BY ME OR UNDER MY SUPERVISION AND THAT THE SAME ARE TRUE AND CORRECT TO THE BEST OF MY KNOWLEDGE AND BELIEF.

REGISTERED LAND SURVEYOR  
REGISTRATION NO. 28285  
STATE OF COLORADO

UINTAH ENGINEERING & LAND SURVEYING  
85 SOUTH 200 EAST - VERNAL, UTAH 84078  
(435) 789-1017

### LEGEND:

- └─┘ = 90° SYMBOL
- = PROPOSED WELL HEAD.
- ▲ = SECTION CORNERS LOCATED.

○ Target Bottom Hole

PDOP = 1.4

NAD 83 (SURFACE LOCATION)	
LATITUDE	= 40°48'37.96" (40.810544)
LONGITUDE	= 103°46'37.89" (103.777192)
NAD 27 (SURFACE LOCATION)	
LATITUDE	= 40°48'38.02" (40.810561)
LONGITUDE	= 103°46'36.08" (103.776689)

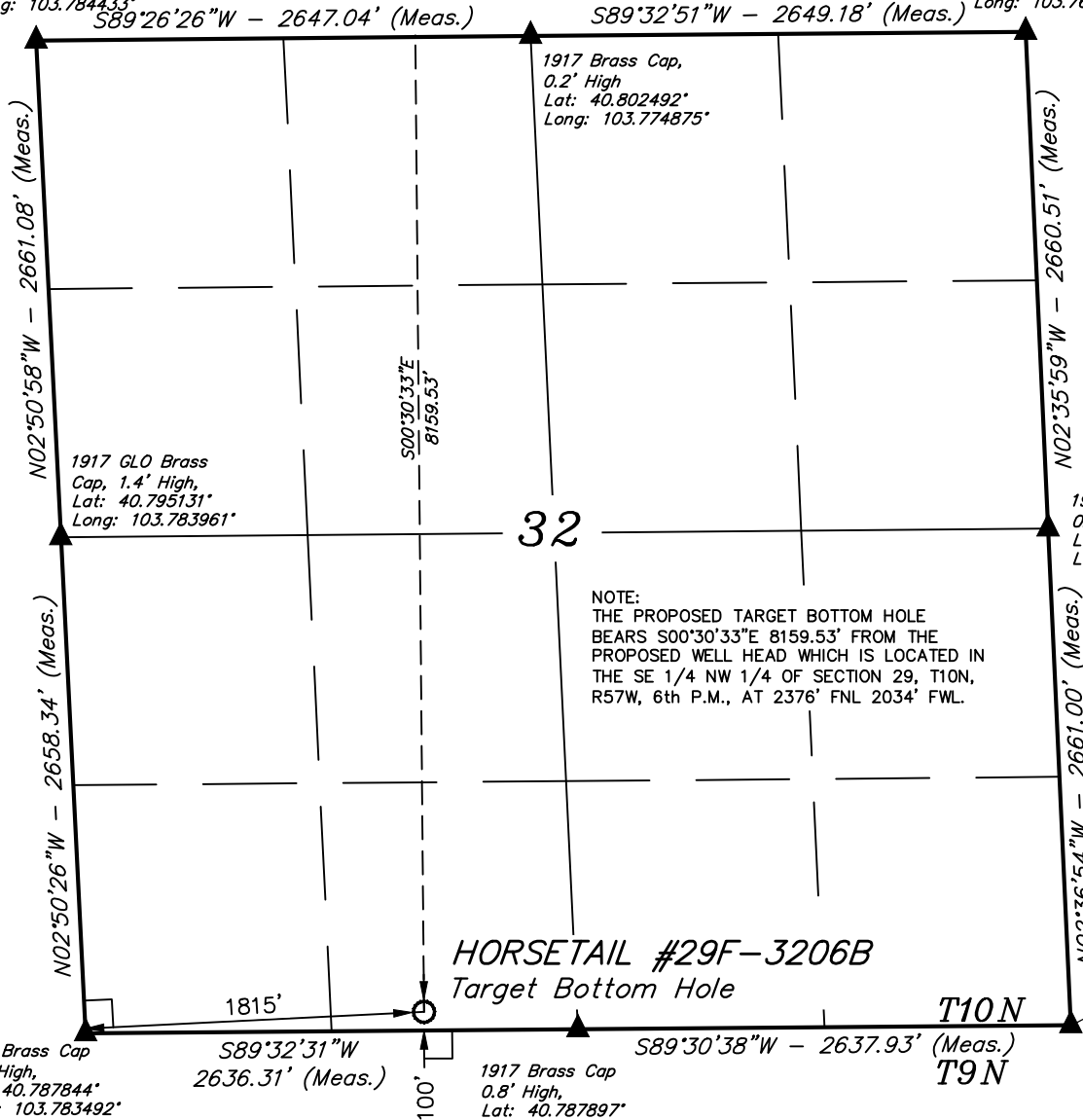
SCALE 1" = 1000'	DATE SURVEYED: 08-01-13	DATE DRAWN: 08-06-13
PARTY J.H. C.M. B.D.H.	REFERENCES G.L.O. PLAT	
WEATHER HOT	FILE WHITING OIL & GAS CORP.	

T10N, R57W, 6th. P.M.

Surface Location

1917 Brass Cap,  
0.4' High  
Lat: 40.802425°  
Long: 103.784433°

1917 Brass Cap,  
0.9' High  
Lat: 40.802542°  
Long: 103.765308°



1917 Brass Cap  
0.3' High,  
Lat: 40.787844°  
Long: 103.783492°

1917 Brass Cap  
0.8' High,  
Lat: 40.787897°  
Long: 103.773975°

1917 Brass Cap  
1.0' High,  
Lat: 40.787953°  
Long: 103.764450°

**HORSETAIL #29F-3206B**  
Target Bottom Hole

**LEGEND:**

- └─┘ = 90° SYMBOL
- = PROPOSED WELL HEAD.
- ▲ = SECTION CORNERS LOCATED.

NAD 83 (TARGET BOTTOM HOLE)	
LATITUDE	= 40°47'17.36" (40.788156)
LONGITUDE	= 103°46'37.03" (103.776953)
NAD 27 (TARGET BOTTOM HOLE)	
LATITUDE	= 40°47'17.41" (40.788169)
LONGITUDE	= 103°46'35.22" (103.776450)

**WHITING OIL & GAS CORP.**

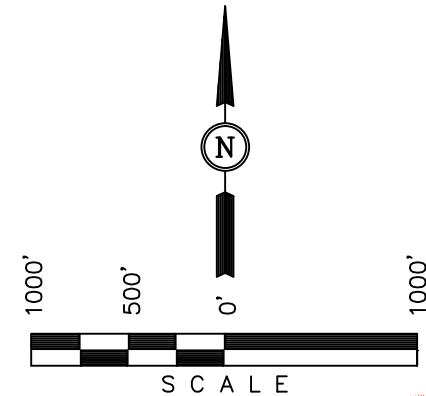
Well location, HORSETAIL #29F-3206B (TARGET BOTTOM HOLE), located as shown in the SE 1/4 SW 1/4 of Section 32, T10N, R57W, 6th. P.M., Weld County, Colorado.

**BASIS OF ELEVATION**

SPOT ELEVATION LOCATED AT THE NORTHEAST CORNER OF SECTION 15, T9N, R58W, 6th P.M. TAKEN FROM THE GATEHOOK SPRING, QUADRANGLE, COLORADO, WELD COUNTY, 7.5 MINUTE QUAD (TOPOGRAPHIC MAP) PUBLISHED BY THE UNITED STATES DEPARTMENT OF THE INTERIOR, GEOLOGICAL SURVEY. SAID ELEVATION IS MARKED AS BEING 4679 FEET.

**BASIS OF BEARINGS**

BASIS OF BEARINGS IS A G.P.S. OBSERVATION.



**CERTIFICATION**

THIS IS TO CERTIFY THAT THE ABOVE PLAT WAS PREPARED FROM FIELD NOTES OF ACTUAL SURVEYS MADE BY ME OR UNDER MY SUPERVISION AND THAT THE SAME ARE TRUE AND CORRECT TO THE BEST OF MY KNOWLEDGE AND BELIEF.

REGISTERED LAND SURVEYOR  
REGISTRATION NO. 28285  
STATE OF COLORADO 08-04-13

**UINTAH ENGINEERING & LAND SURVEYING**  
85 SOUTH 200 EAST - VERNAL, UTAH 84078  
(435) 789-1017

SCALE 1" = 1000'	DATE SURVEYED: 08-01-13	DATE DRAWN: 08-06-13
PARTY J.H. C.M. B.D.H.	REFERENCES G.L.O. PLAT	
WEATHER HOT	FILE WHITING OIL & GAS CORP.	