

# LEGEND:

- 90° SYMBOL
- PROPOSED WELLHEAD.
- TARGET BOTTOM HOLE.
- SECTION CORNERS LOCATED.

T10N, R57W, 6th P.M.

2011 Alum. Cap,  
#17492,  
Flush W/ Ground  
Lat: 40.831606°  
Long: 103.794478°

2011 Alum. Cap,  
#17492  
Lat: 40.831603°  
Long: 103.803653°

1917 Brass Cap,  
0.5' High  
Lat: 40.831611°  
Long: 103.784878°

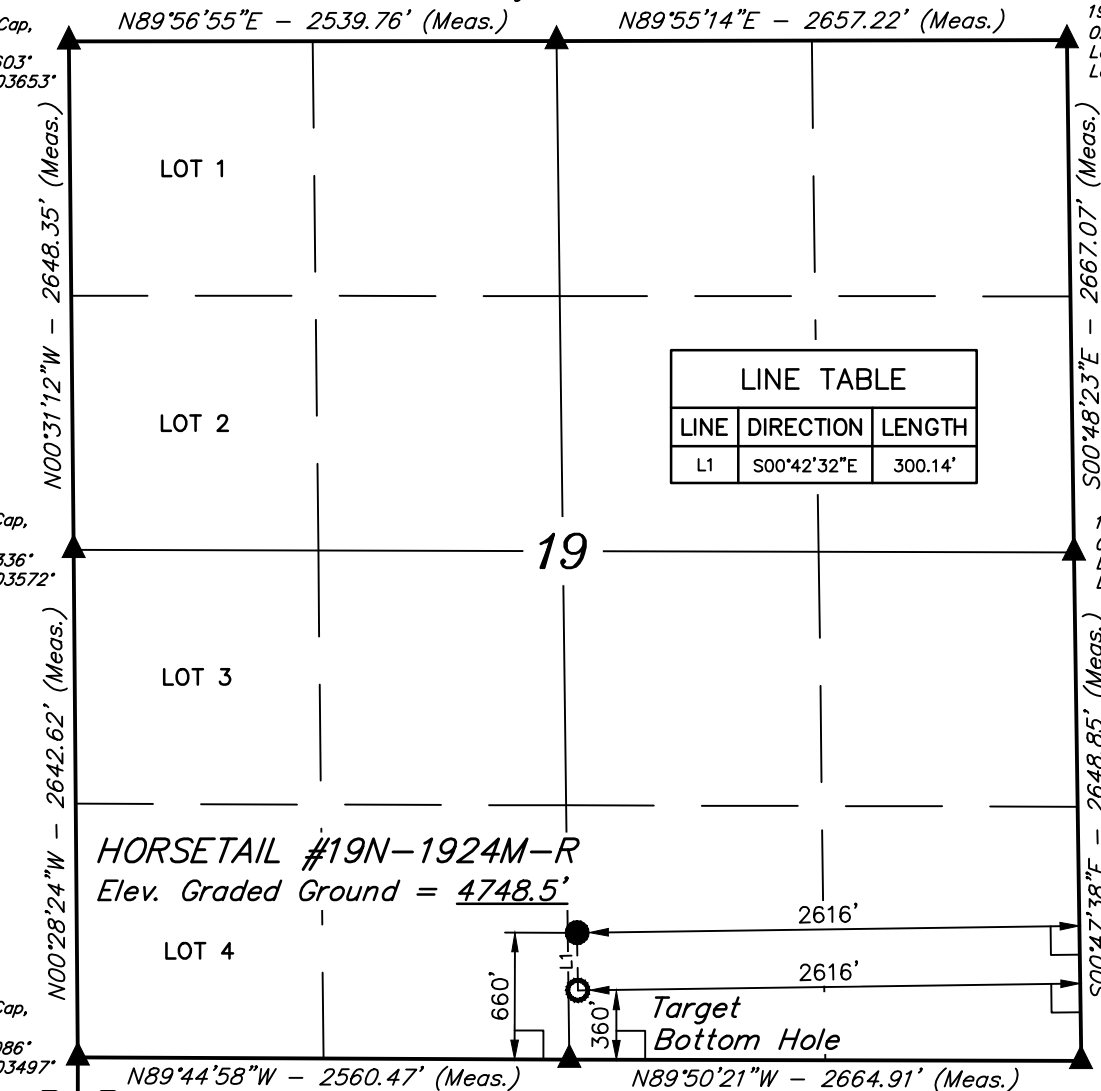
1917 Brass Cap,  
2.0' High  
Lat: 40.824336°  
Long: 103.803572°

1917 Brass Cap,  
0.4' High  
Lat: 40.824294°  
Long: 103.784750°

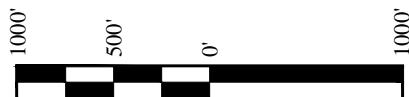
1917 Brass Cap,  
1.0' High  
Lat: 40.817086°  
Long: 103.803497°

1917 Brass Cap,  
Flush W/ Ground  
Lat: 40.817025°  
Long: 103.784622°

2011 Alum. Cap,  
#28285, 0.2' High  
Lat: 40.817050°  
Long: 103.794247°



PDOP = 1.8



| NAD 83 (TARGET BOTTOM HOLE)            | NAD 83 (SURFACE LOCATION)              |
|--|--|
| LATITUDE = 40°49'04.94" (40.818039)    | LATITUDE = 40°49'07.90" (40.818861)    |
| LONGITUDE = 103°47'38.72" (103.794089) | LONGITUDE = 103°47'38.77" (103.794103) |
| NAD 27 (TARGET BOTTOM HOLE)            | NAD 27 (SURFACE LOCATION)              |
| LATITUDE = 40°49'04.99" (40.818053)    | LATITUDE = 40°49'07.95" (40.818875)    |
| LONGITUDE = 103°47'36.92" (103.793589) | LONGITUDE = 103°47'36.96" (103.793600) |

## BASIS OF BEARINGS

BASIS OF BEARINGS IS A G.P.S. OBSERVATION

## BASIS OF ELEVATION

SPOT ELEVATION LOCATED AT THE NORTHEAST CORNER OF SECTION 15, T9N, R58W, 6th P.M. TAKEN FROM THE GATEHOOK SPRING, QUADRANGLE, COLORADO, WELD COUNTY, 7.5 MINUTE QUAD (TOPOGRAPHIC MAP) PUBLISHED BY THE UNITED STATES DEPARTMENT OF THE INTERIOR, GEOLOGICAL SURVEY. SAID ELEVATION IS MARKED AS BEING 4679 FEET.

## WHITING OIL & GAS CORP.

**HORSETAIL #19N-1924M-R**  
SW 1/4 SE 1/4, SECTION 19, T10N, R57W, 6th P.M.  
WELD COUNTY, COLORADO

|                           |                      |
|---------------------------|----------------------|
| SURVEYED BY: LUKE PERRIN  | DATE: 09-30-14       |
| DRAWN BY: J.S.            | DATE DRAWN: 09-30-14 |
| SCALE: 1" = 1000'         | REVISED: 00-00-00    |
| <b>WELL LOCATION PLAT</b> |                      |



**UELS, LLC**  
Corporate Office \* 85 South 200 East  
Vernal, UT 84078 \* (435) 789-1017



CERTIFICATE  
THIS IS TO CERTIFY THAT THE ABOVE PLAT WAS PREPARED FROM FIELD NOTES OF ACTUAL SURVEYS MADE BY ME OR UNDER MY SUPERVISION AND THAT THE SAME ARE TRUE AND CORRECT TO THE BEST OF MY KNOWLEDGE AND BELIEF.

REGISTERED LAND SURVEYOR  
REGISTRATION NO. 28285  
STATE OF COLORADO 09-30-14