



# WELLS RANCH AE 30-63HNC

TVD  
1"=100'

Company: NOBLE ENERGY  
Well Name: WELLS RANCH AE 30-63HNC  
API: 05-123-38682  
Rig Id: H&P 277  
State: CO  
County/Parish: WELD  
Country: USA  
Survey Company: DRILTECH  
Job number: 2014-238-IDDT-CO  
RAYMOND HORTON MWD OPERATOR  
JOSH CAYLOR MWD OPERATOR

Log measurements:  
Depth measured from: 638  
Maximum temperature: 205.8

Depth Date  
Start: 638 ft 5/30/2014  
End: 12007 ft 6/6/2014

Casing Depth Size  
Surface: 628 9.625  
Intermediate: 6909 7.0

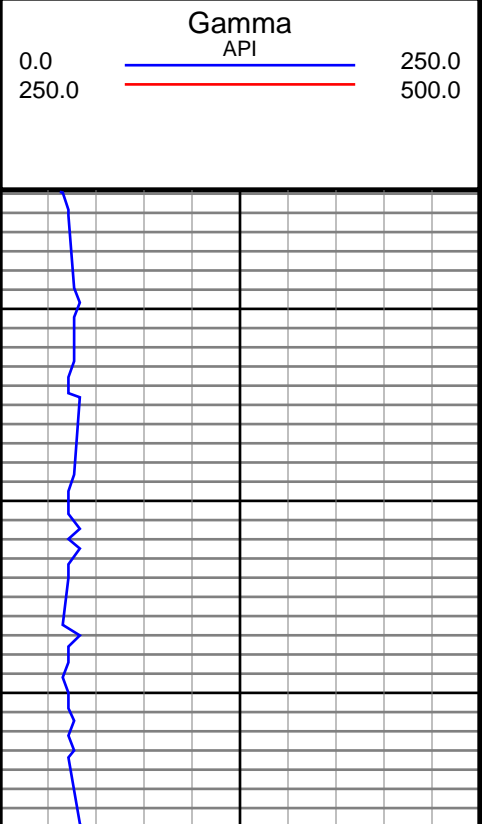
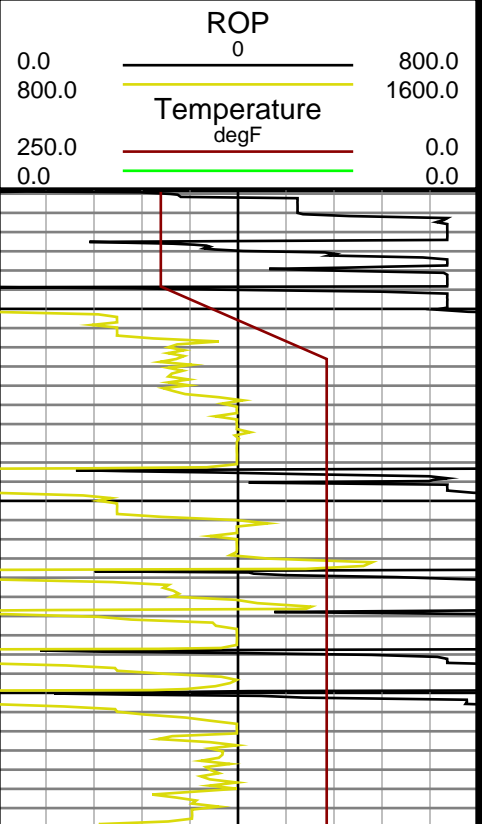
Mud Type: Water Base  
Density: 9.2  
Viscosity: 35  
Rm: Rmf: Rmc:

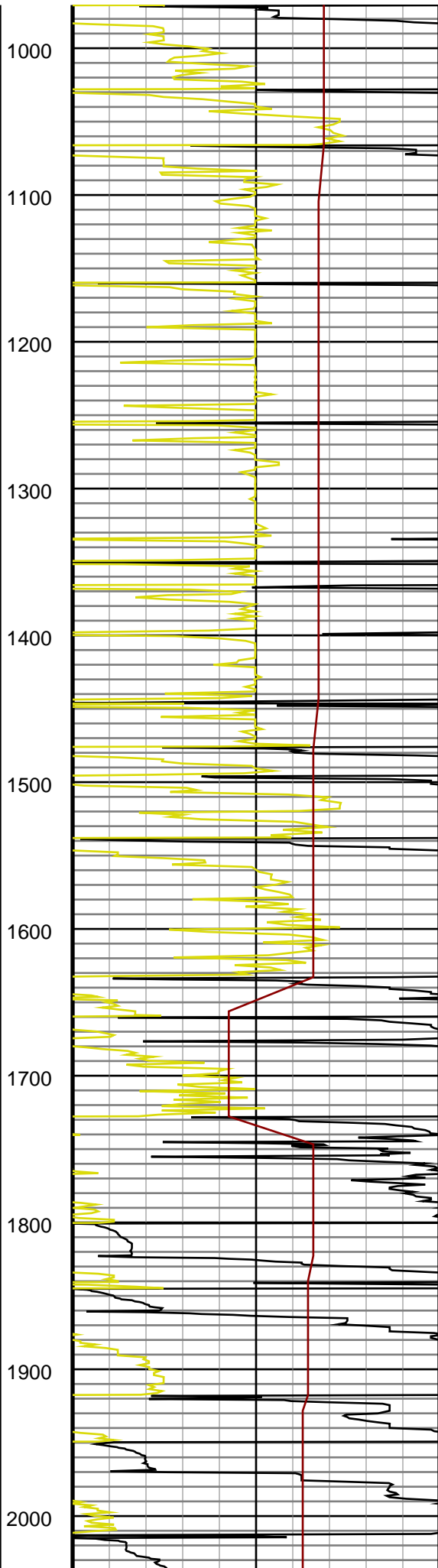
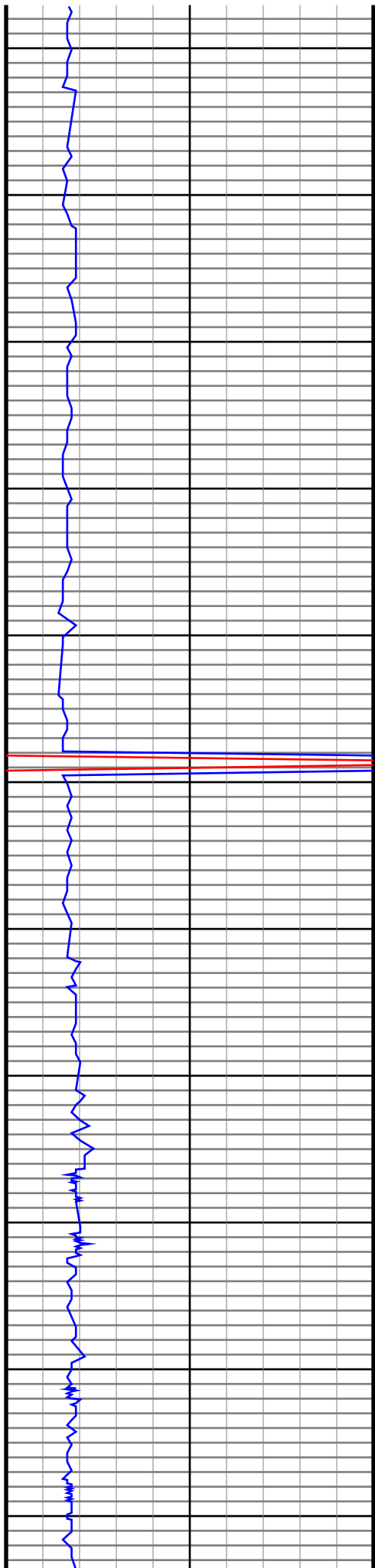
Elevations  
KB: 24  
GL: 4741  
DF:

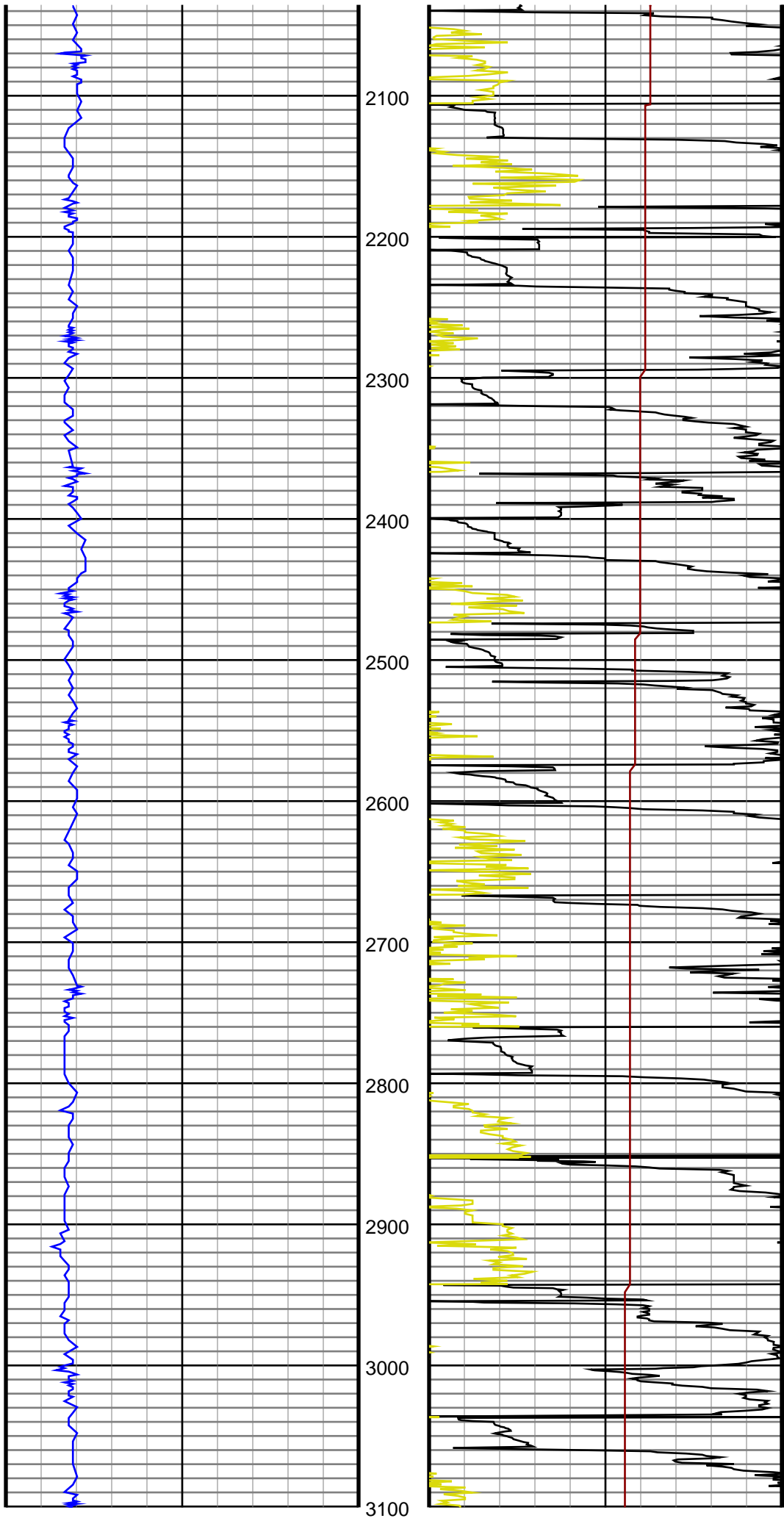
Run	Bit Size	Offsets Gamma Survey	Start	Depths End	Start	Dates End
1	8 3/4	37.00	54.00	638	5930	5/30/2014 5/31/2014
2	8 3/4	45.00	62.00	5930	6919	5/31/2014 6/1/2014
3	6 1/8	53.00	70.00	6919	7373	6/2/2014 6/3/2014
4	6 1/8	53.00	70.00	7373	9206	6/3/2014 6/4/2014
5	6 1/8	53.00	70.00	9206	9206	6/4/2014 6/4/2014
6	6 1/8	53.00	70.00	9206	12007	6/4/2014 6/5/2014
7						
8						
9						
10						

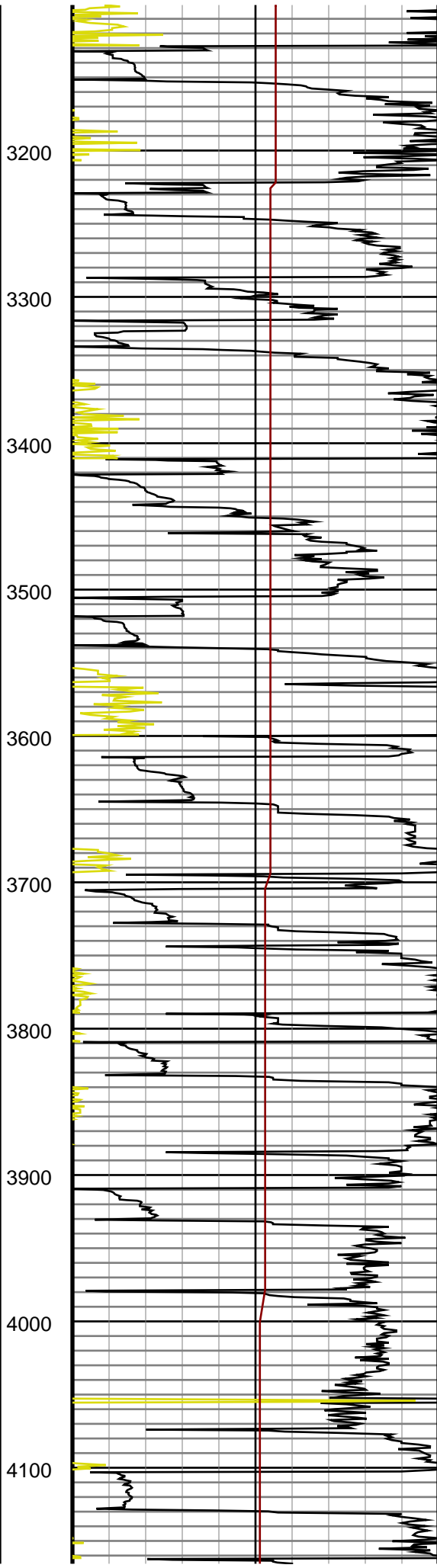
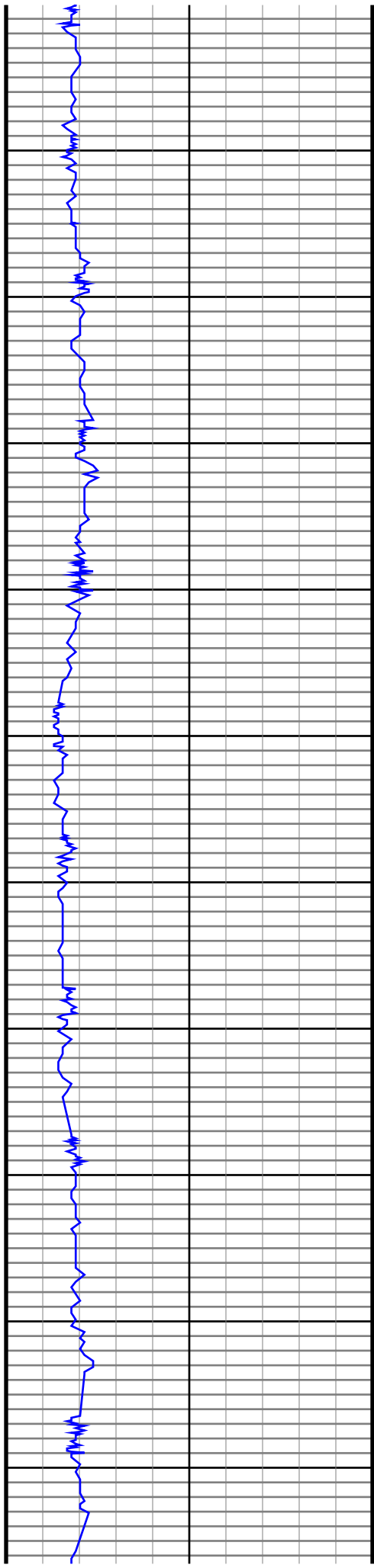
DRILTECH uses its best efforts to provide its customers with accurate information and interpretations in conjunction with services performed but will not be held liable or responsible for the accuracy of such information or interpretation.

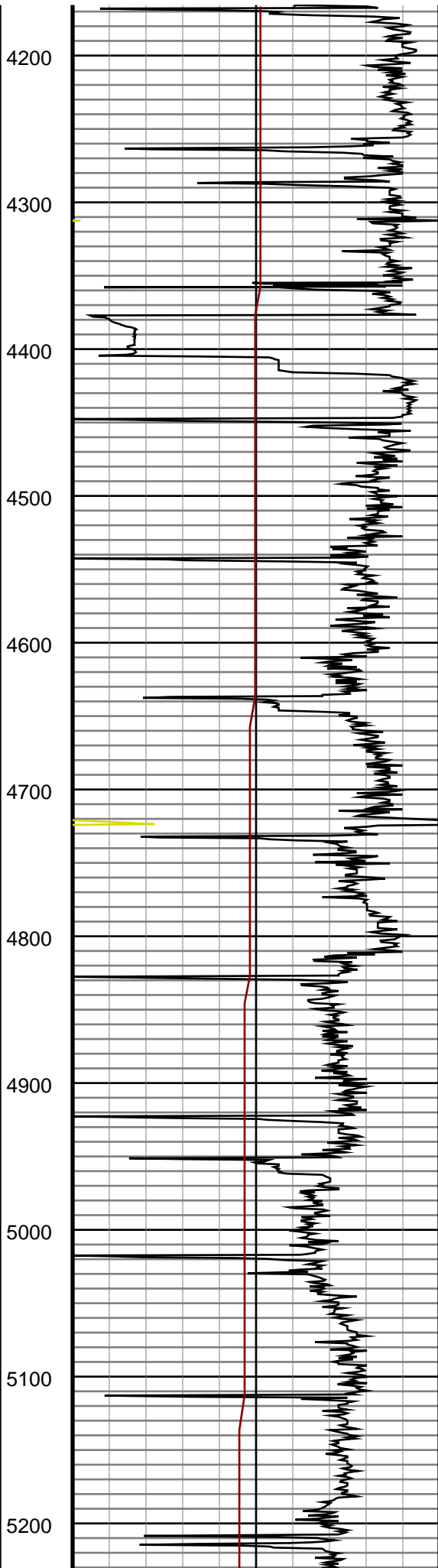
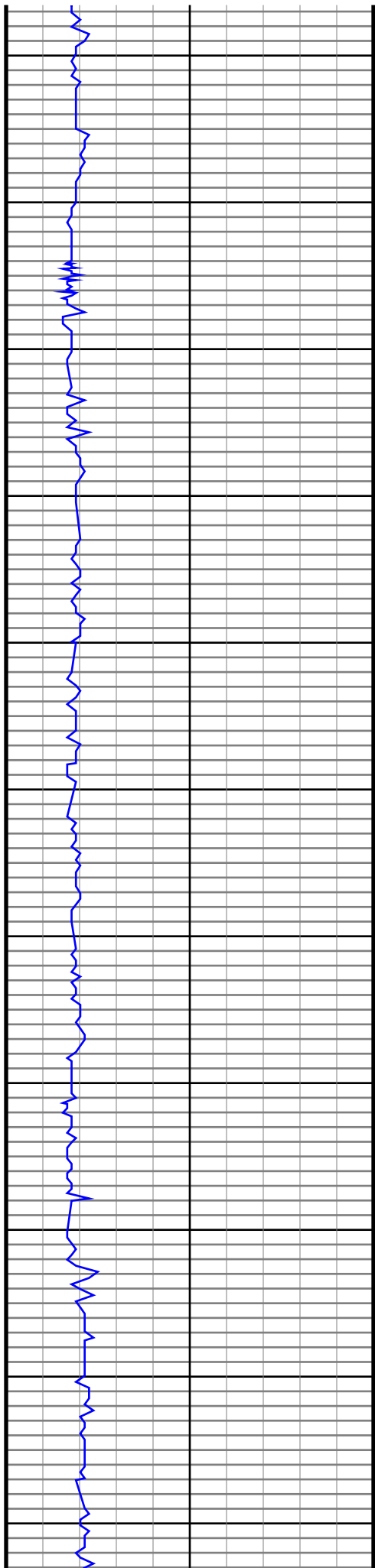
TVD

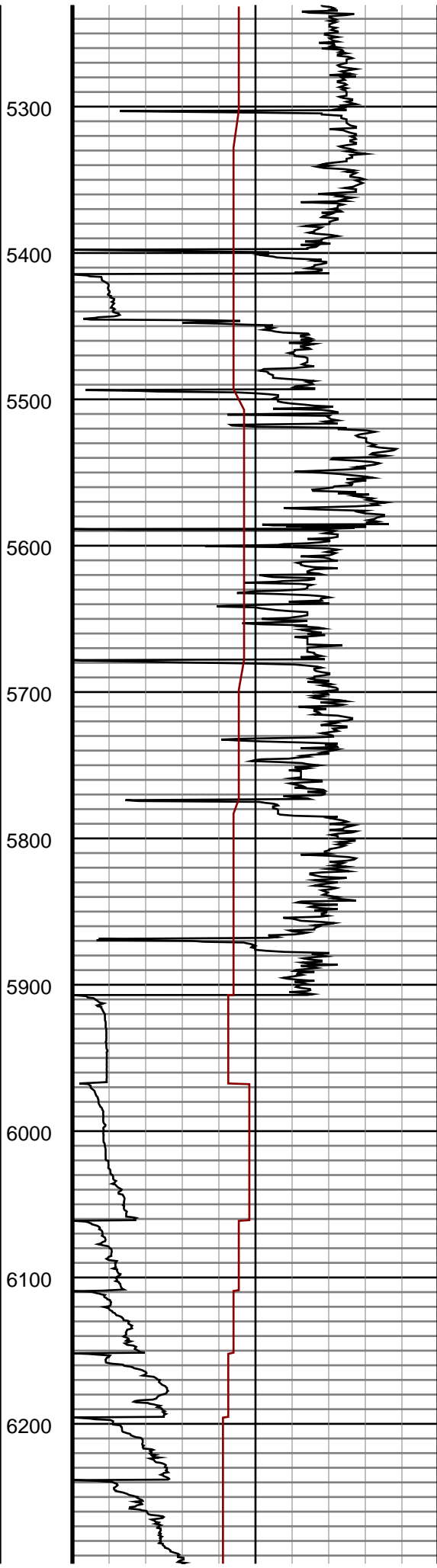
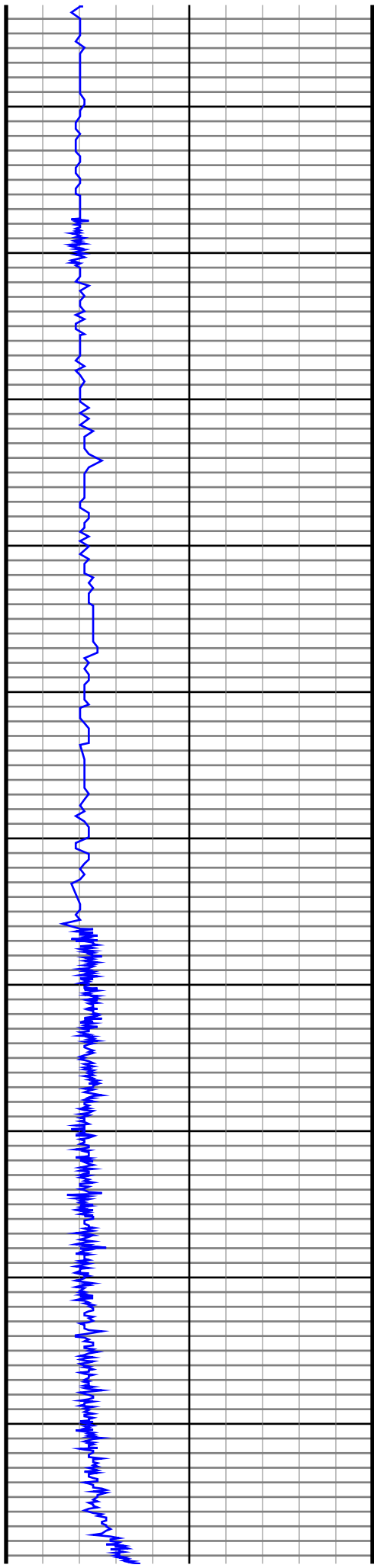


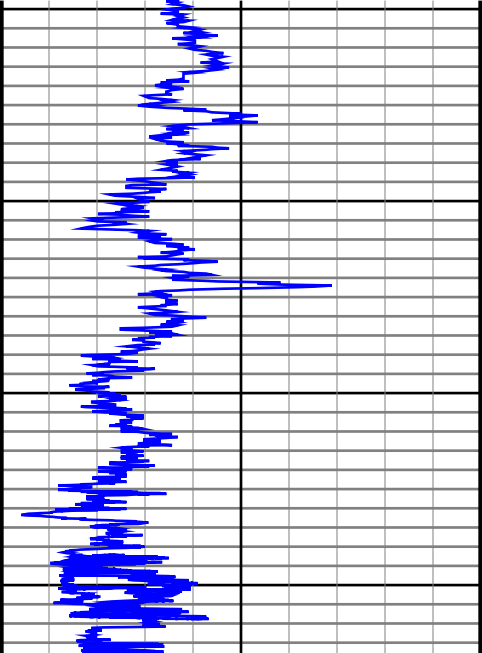








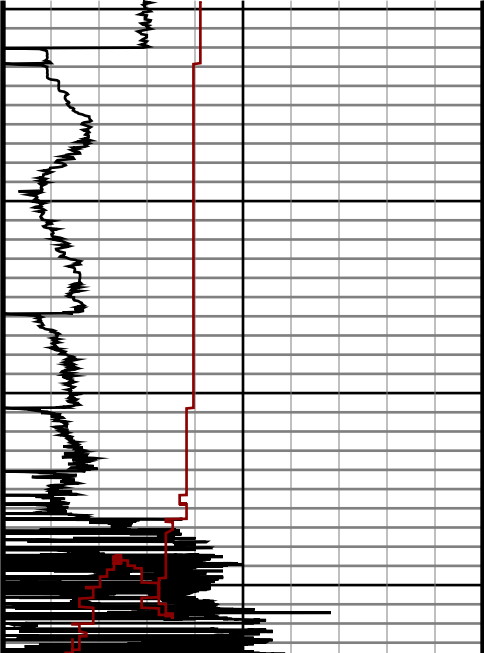




6300  
6400  
6500  
6600

0.0      250.0  
250.0      500.0

Gamma  
API



0.0      800.0  
800.0      1600.0

250.0      0.0  
0.0      0.0

ROP  
0

Temperature  
degF