

OPERATOR: **WPX ENERGY**

WELL NAME: RWF 543-25

FIELD NAME: RULISON

DRILLING RIG: NABORS 577

API #: 05-045-21991

LOCATION: SEC. 25 T 6S R 94W

SURFACE HOLE: 1162' FSL , 1381' FEL

BOTTOM HOLE: 1849' FSL , 659' FEL

SCALE: 1"=100'



533 Bogart Lane, Unit A  
Grand Junction, CO 81505  
Office (970) 424-5162

**RWF 543-25**

COUNTY: GARFIELD

STATE: COLORADO

DRILLING FLUID: LSND

LOGGER: LUKE DAVENPORT

GROUND ELEVATION: 6234'

KELLY BUSHING: 6260'

TVD VS. MD = -88'

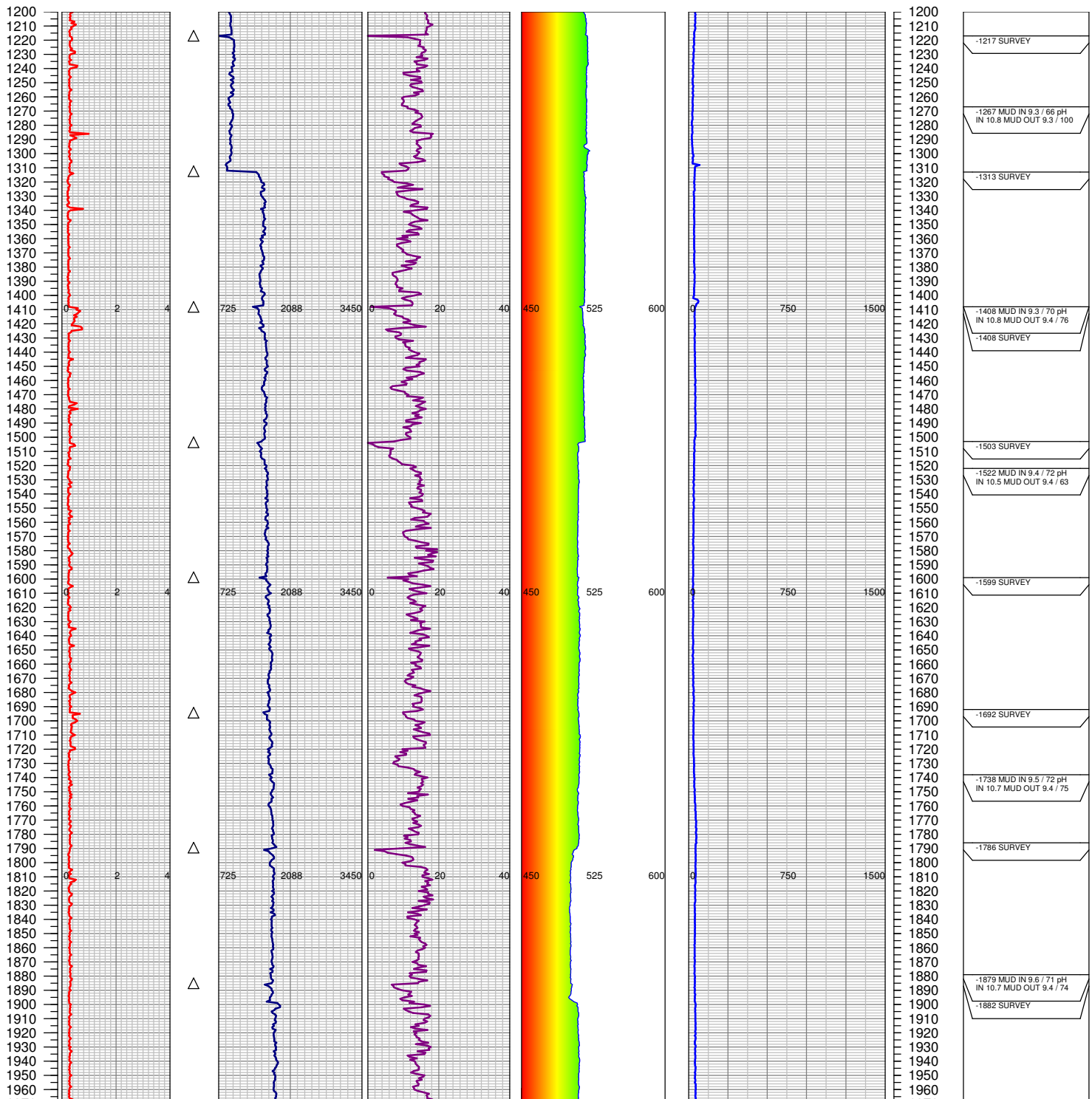
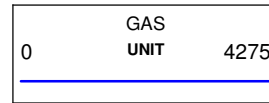
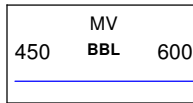
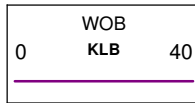
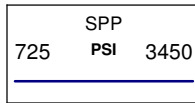
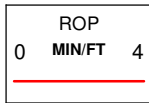
DEPTHS LOGGED: 1200'-8935'

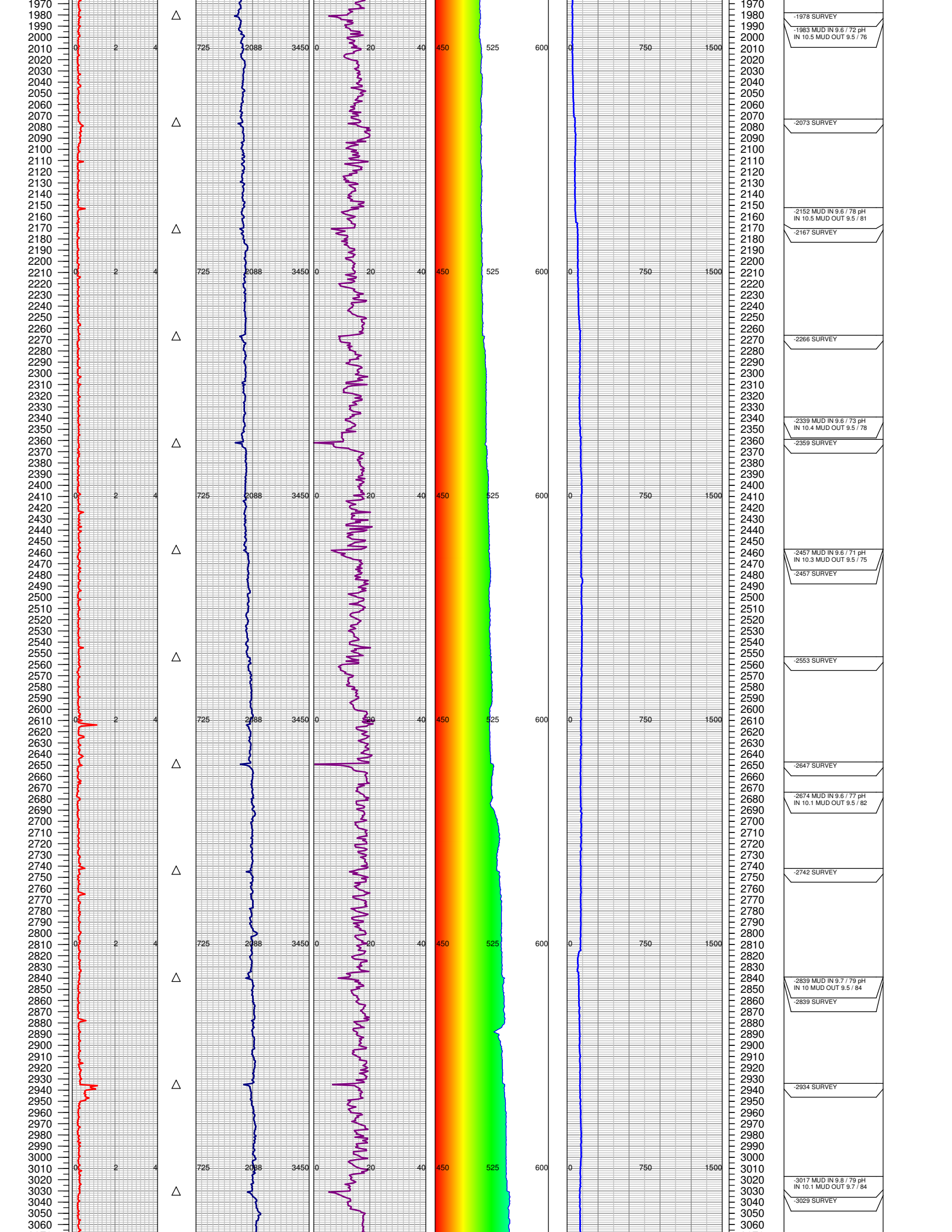
SPUD DATE: 7/5/2014

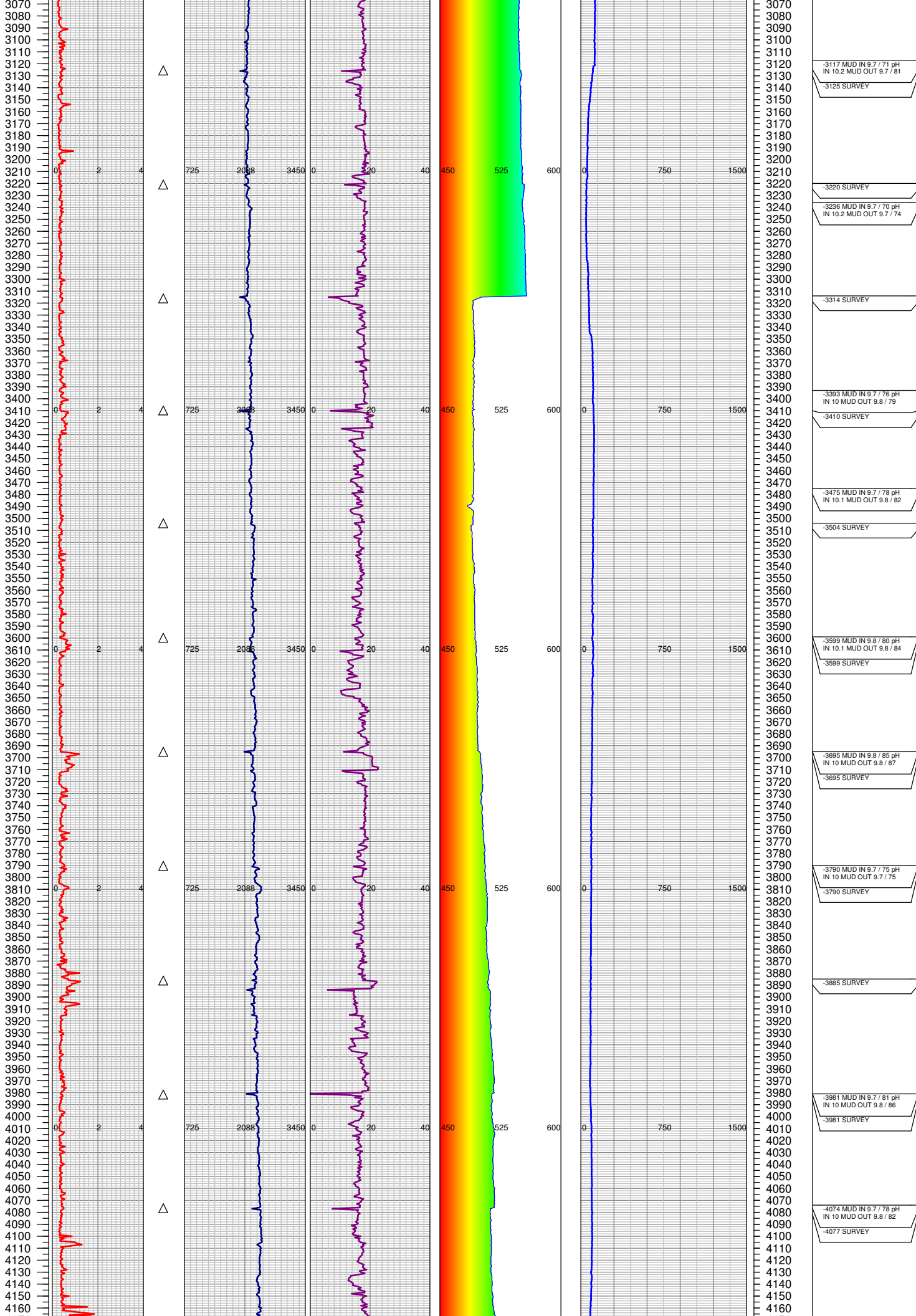
FGS BEGIN LOGGING: 7/7/2014

TD DATE: 7/13/2014

DATES LOGGED: 7/7/2014-7/13/2014







3117 MUD IN 9.7 / 71 pH  
IN 10.2 MUD OUT 9.7 / 81

3125 SURVEY

3220 SURVEY

3236 MUD IN 9.7 / 70 pH  
IN 10.2 MUD OUT 9.7 / 74

3314 SURVEY

3393 MUD IN 9.7 / 76 pH  
IN 10 MUD OUT 9.8 / 79

3410 SURVEY

3475 MUD IN 9.7 / 78 pH  
IN 10.1 MUD OUT 9.8 / 82

3504 SURVEY

3599 MUD IN 9.8 / 80 pH  
IN 10.1 MUD OUT 9.8 / 84

3599 SURVEY

3695 MUD IN 9.8 / 85 pH  
IN 10 MUD OUT 9.8 / 87

3695 SURVEY

3790 MUD IN 9.7 / 75 pH  
IN 10 MUD OUT 9.7 / 75

3790 SURVEY

3885 SURVEY

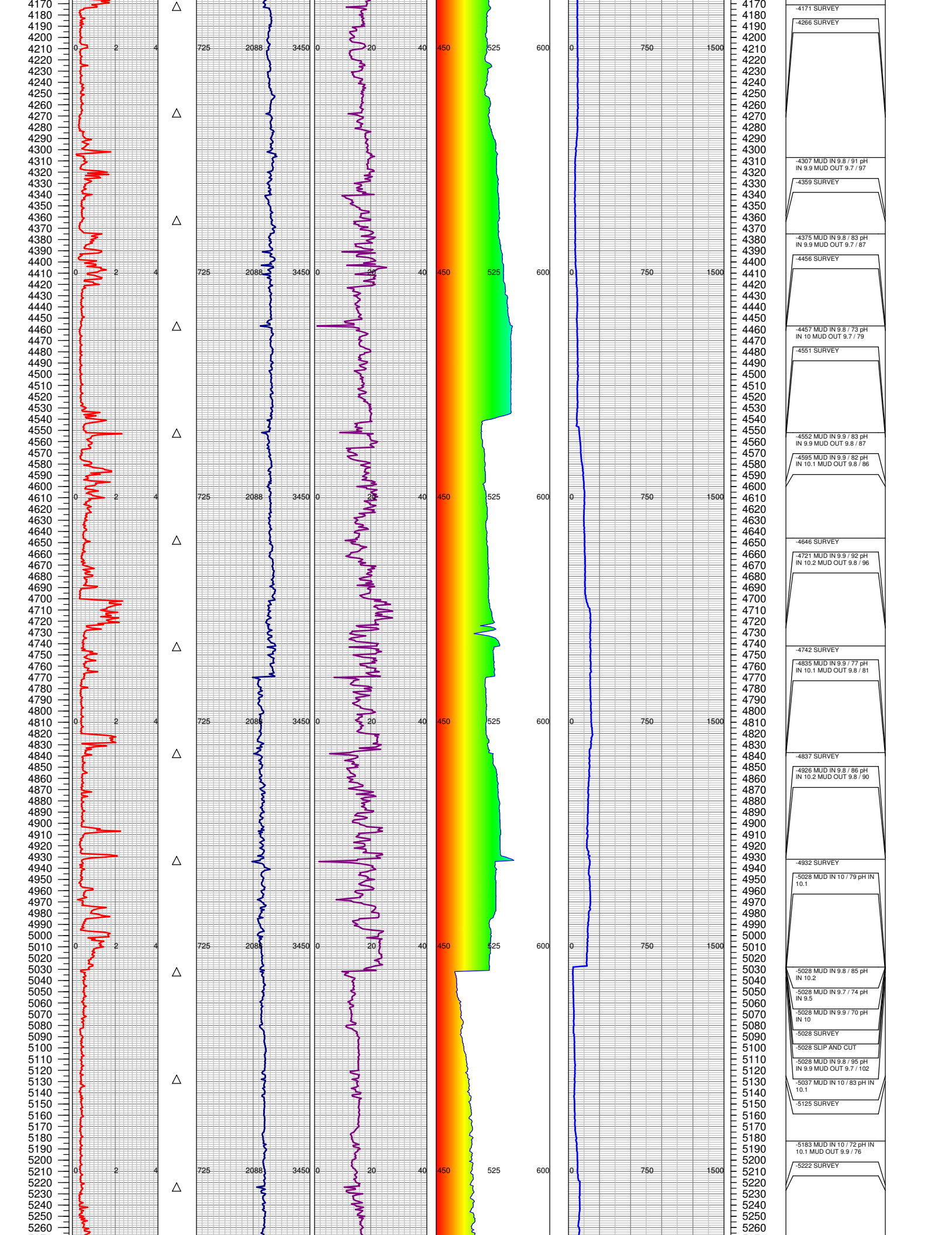
3981 MUD IN 9.7 / 81 pH  
IN 10 MUD OUT 9.8 / 86

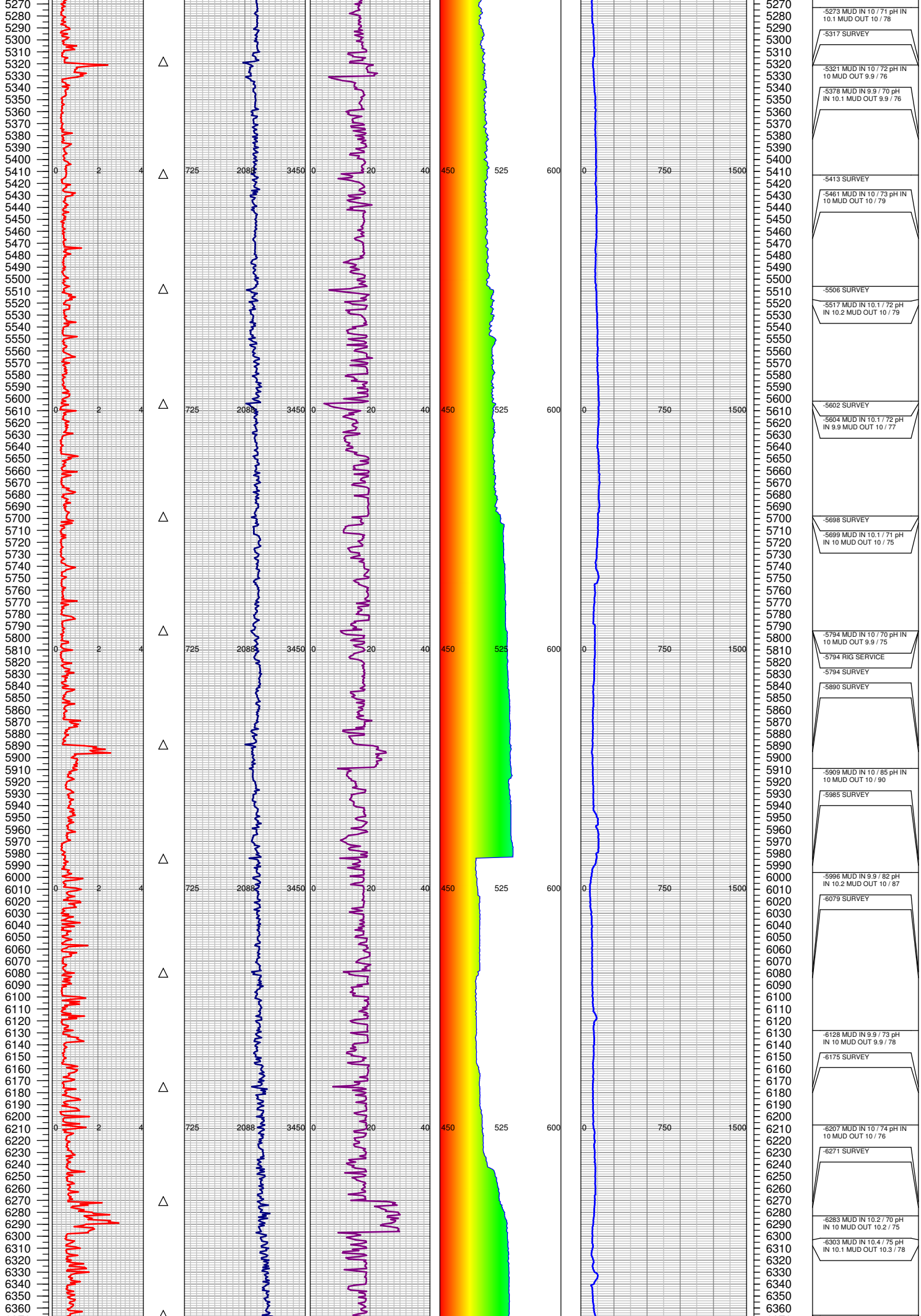
3981 SURVEY

4074 MUD IN 9.7 / 78 pH  
IN 10 MUD OUT 9.8 / 82

4077 SURVEY







5270 -5273 MUD IN 10 / 71 pH IN  
10.1 MUD OUT 10 / 78

5280

5290

5300 -5317 SURVEY

5310

5320 -5321 MUD IN 10 / 72 pH IN  
10 MUD OUT 9.9 / 76

5330

5340 -5378 MUD IN 9.9 / 70 pH  
IN 10.1 MUD OUT 9.9 / 76

5350

5360

5370

5380

5390

5400

5410 -5413 SURVEY

5420

5430 -5461 MUD IN 10 / 73 pH IN  
10 MUD OUT 10 / 79

5440

5450

5460

5470

5480

5490

5500

5510 -5506 SURVEY

5520

5530 -5517 MUD IN 10.1 / 72 pH  
IN 10.2 MUD OUT 10 / 79

5540

5550

5560

5570

5580

5590

5600 -5602 SURVEY

5610

5620 -5684 MUD IN 10.1 / 72 pH  
IN 9.9 MUD OUT 10 / 77

5630

5640

5650

5660

5670

5680

5690

5700 -5698 SURVEY

5710

5720 -5699 MUD IN 10.1 / 71 pH  
IN 10 MUD OUT 10 / 75

5730

5740

5750

5760

5770

5780

5790

5800 -5794 MUD IN 10 / 70 pH IN  
10 MUD OUT 9.9 / 75

5810

5820 -5794 RIG SERVICE

5830

5840 -5890 SURVEY

5850

5860

5870

5880

5890

5900

5910 -5909 MUD IN 10 / 85 pH IN  
10 MUD OUT 10 / 90

5920

5930 -5985 SURVEY

5940

5950

5960

5970

5980

5990

6000 -5996 MUD IN 9.9 / 82 pH  
IN 10.2 MUD OUT 10 / 87

6010

6020 -6079 SURVEY

6030

6040

6050

6060

6070

6080

6090

6100

6110

6120

6130 -6128 MUD IN 9.9 / 73 pH  
IN 10 MUD OUT 9.9 / 78

6140

6150 -6175 SURVEY

6160

6170

6180

6190

6200

6210 -6207 MUD IN 10 / 74 pH IN  
10 MUD OUT 10 / 76

6220

6230 -6271 SURVEY

6240

6250

6260

6270

6280

6290 -6283 MUD IN 10.2 / 70 pH  
IN 10 MUD OUT 10.2 / 75

6300

6310 -6303 MUD IN 10.4 / 75 pH  
IN 10.1 MUD OUT 10.3 / 78

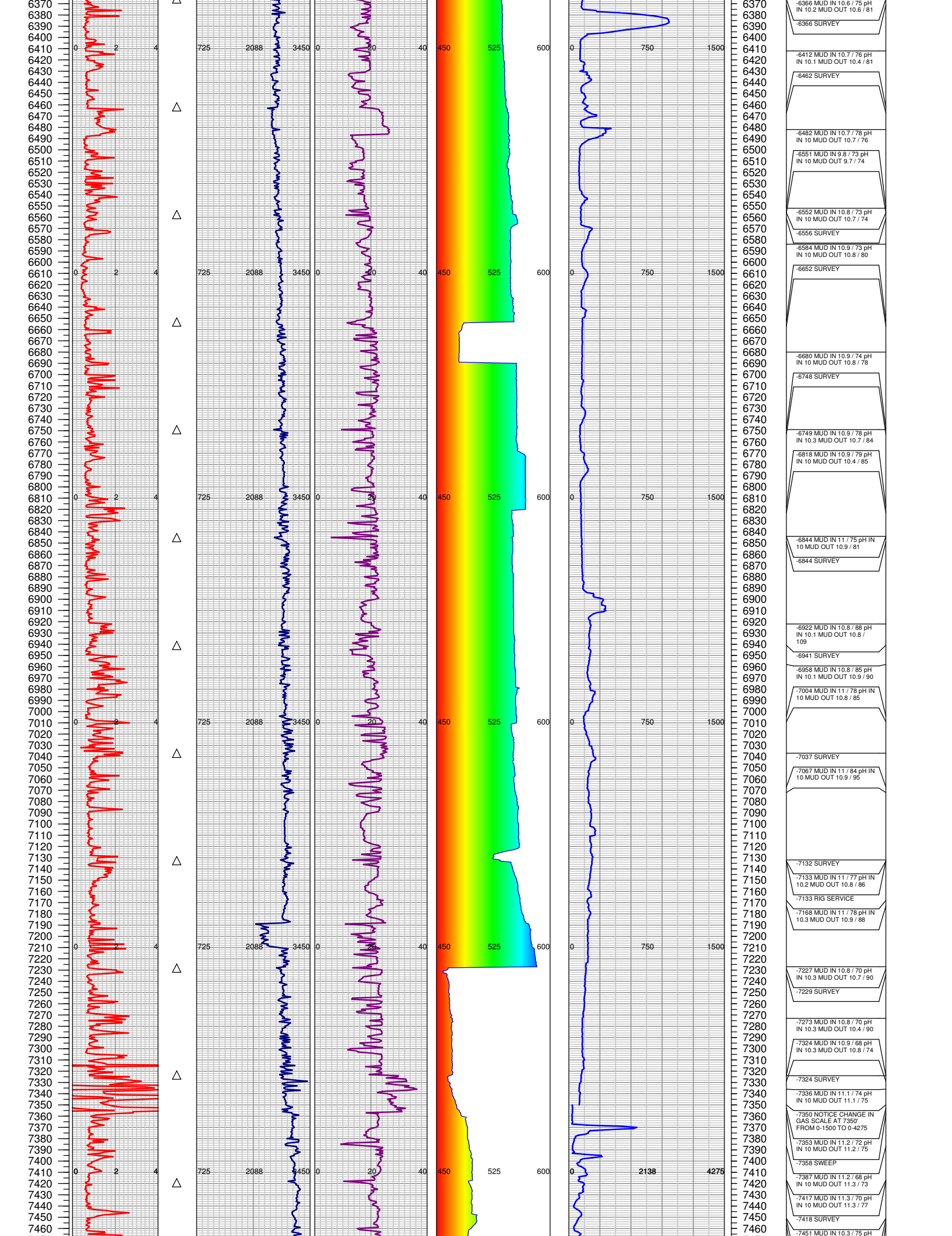
6320

6330

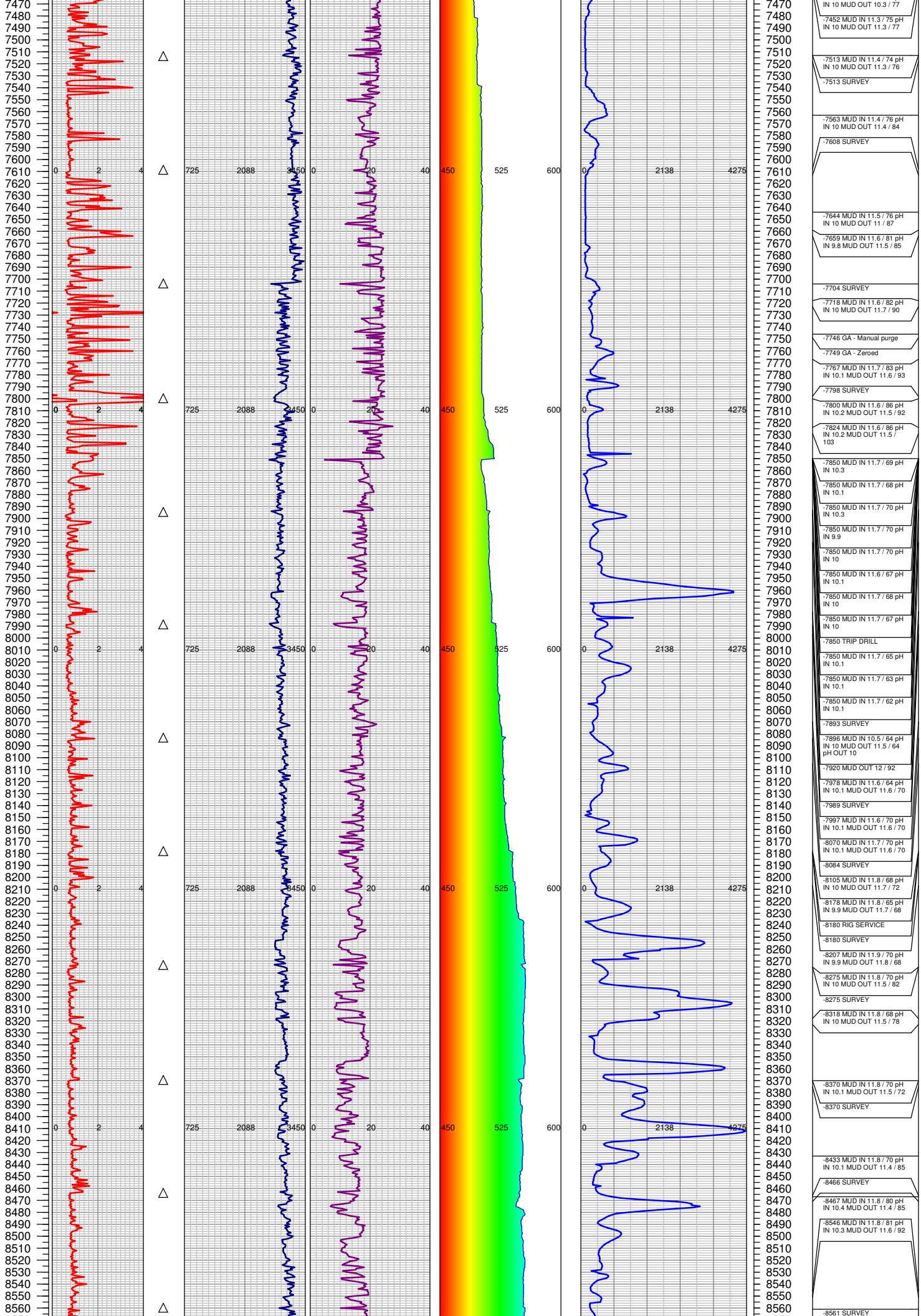
6340

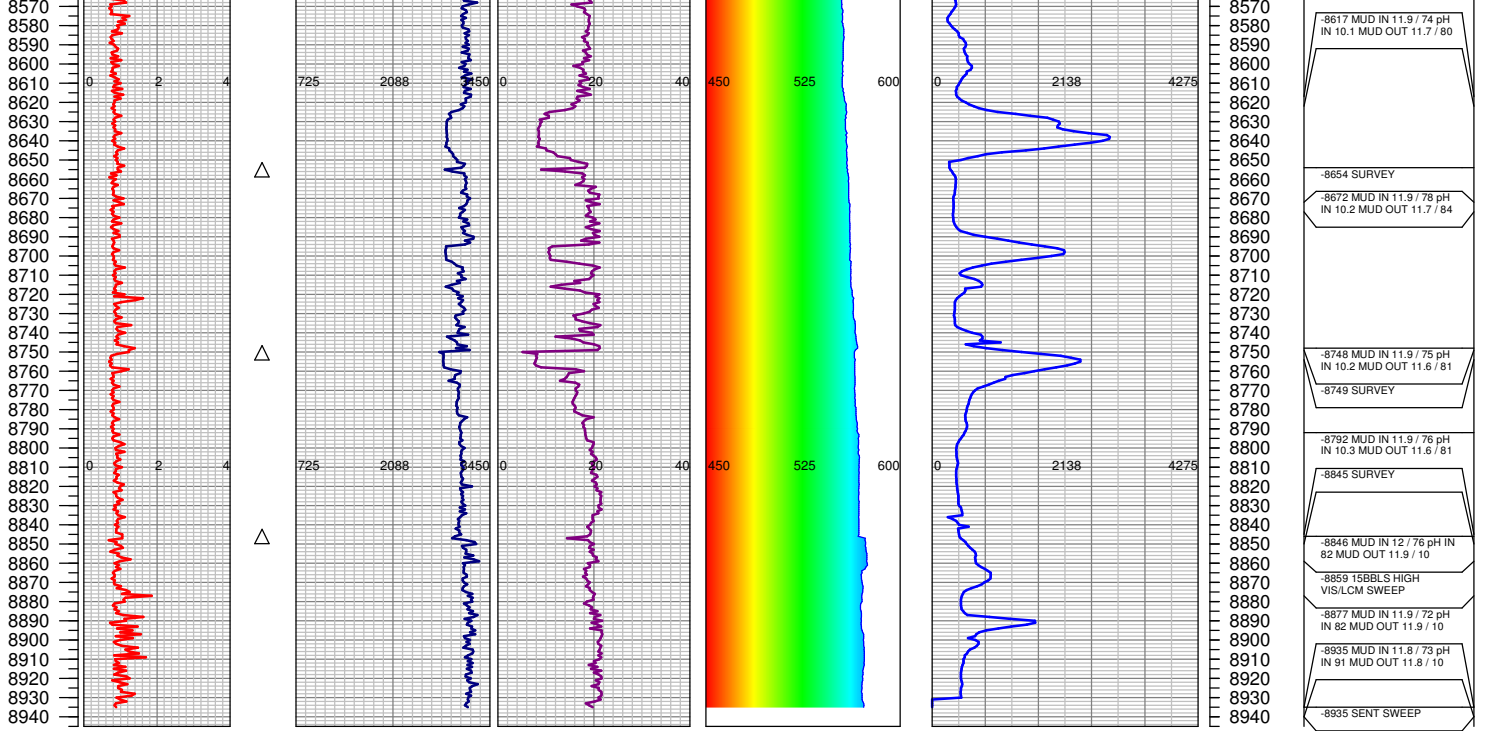
6350

6360









TOTAL DEPTH =    8935'

FGS RELEASED:    7/13/2014