

WELL NAME: RWF 334-25
FIELD NAME: RULISON
DRILLING RIG: NABORS 577
API #: 05-045-21996

LOCATION: SEC. 25 T 6S R 94W
SURFACE HOLE: 1147' FSL , 1391' FEL
BOTTOM HOLE: 1428' FSL , 2632' FWL
SCALE: 1"=100'



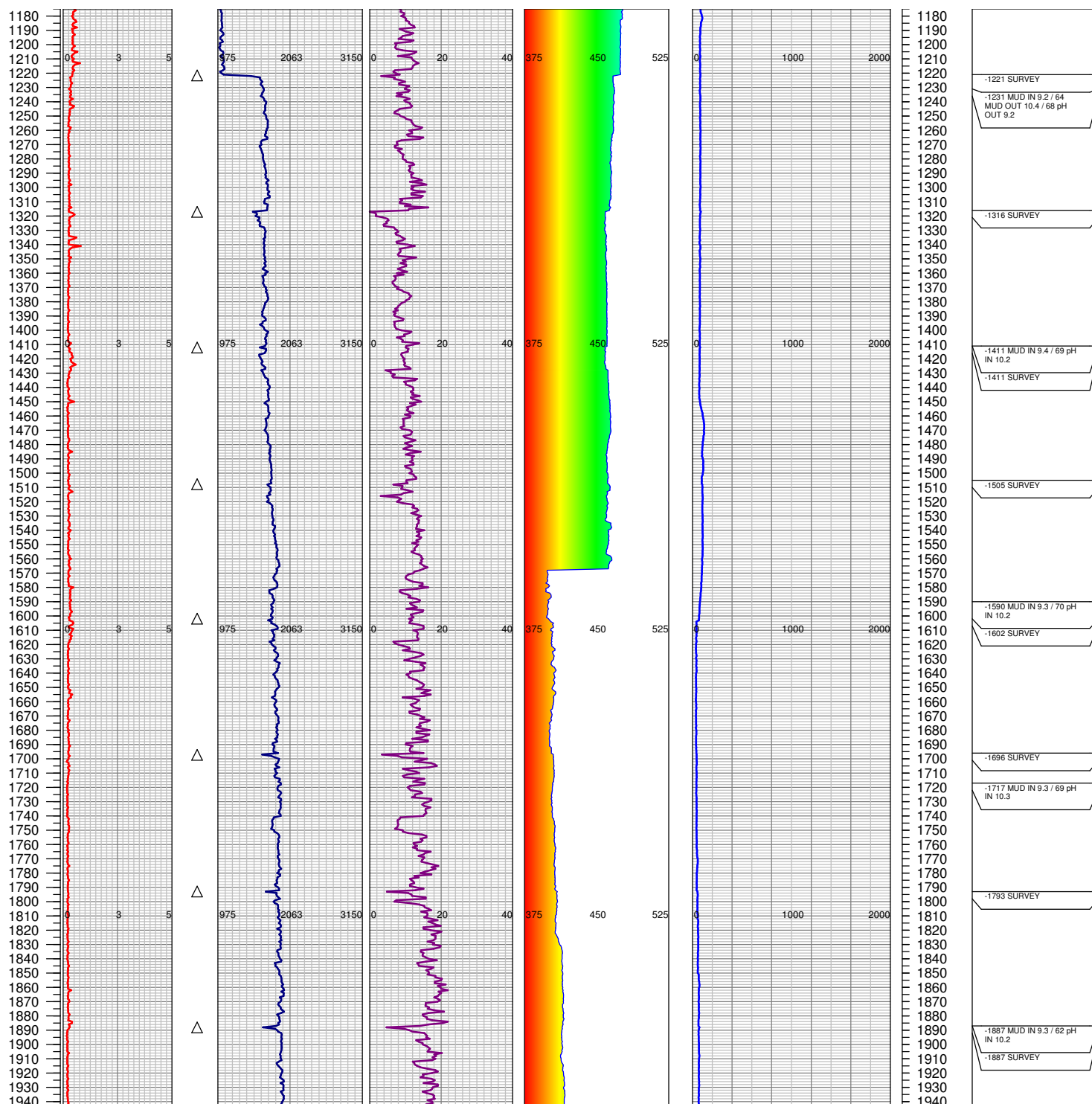
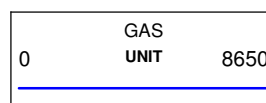
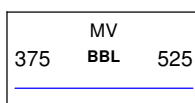
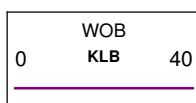
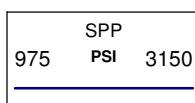
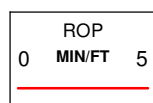
533 Bogart Lane, Unit A
Grand Junction, CO 81505
Office (970) 424-5162

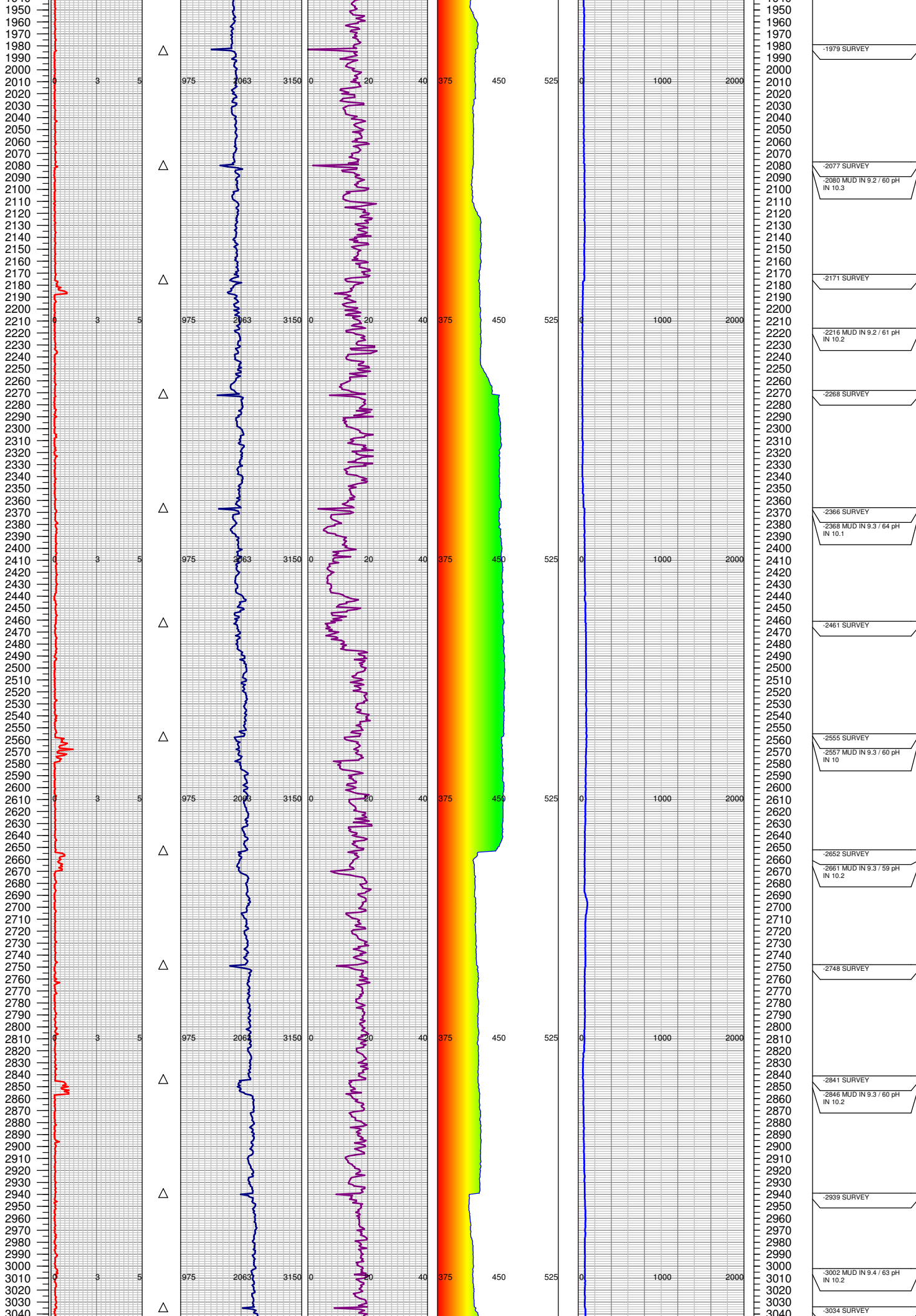
RWF 334-25

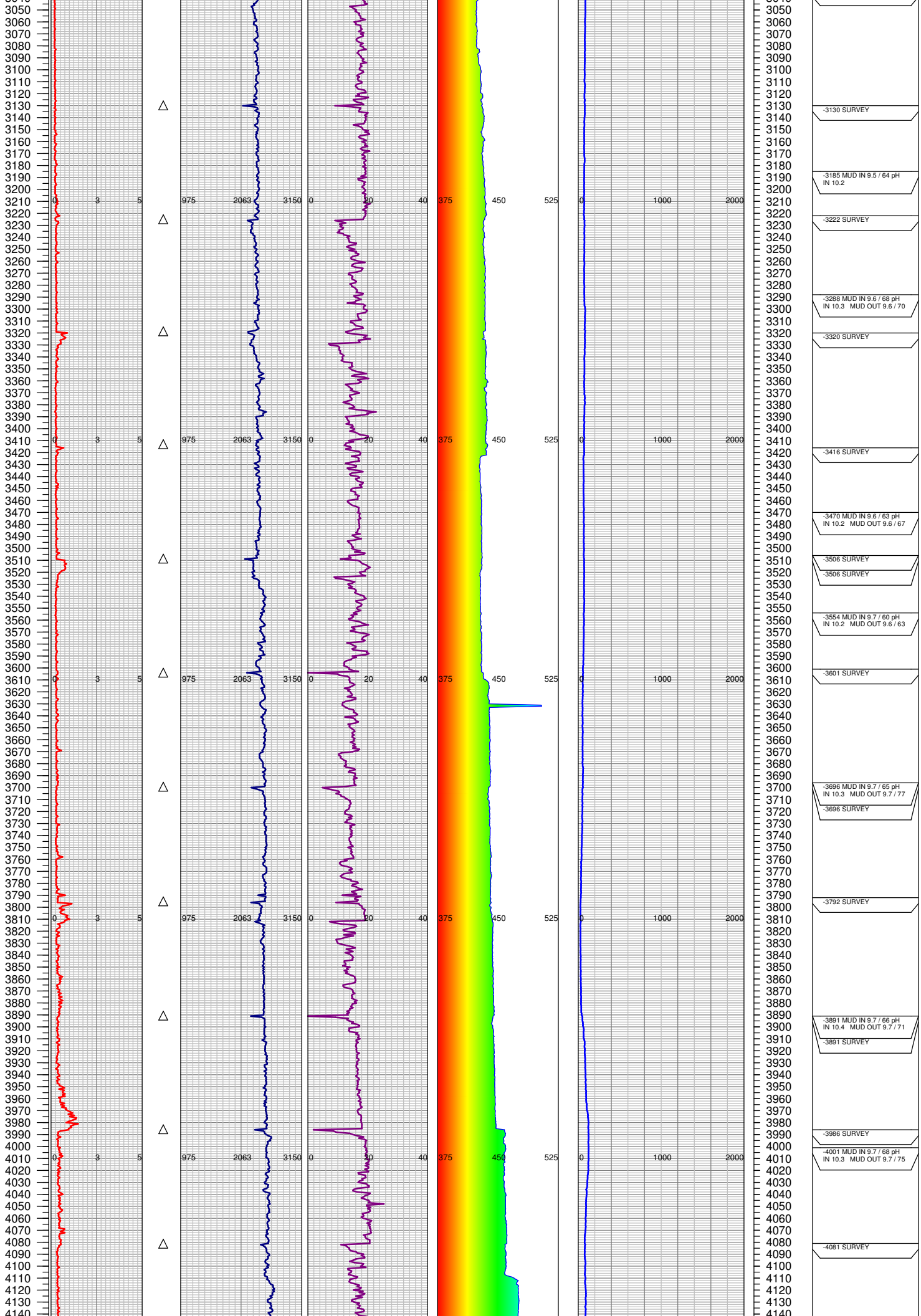
COUNTY: GARFIELD
STATE: COLORADO
DRILLING FLUID: LSND
LOGGER: LUKE DAVENPORT

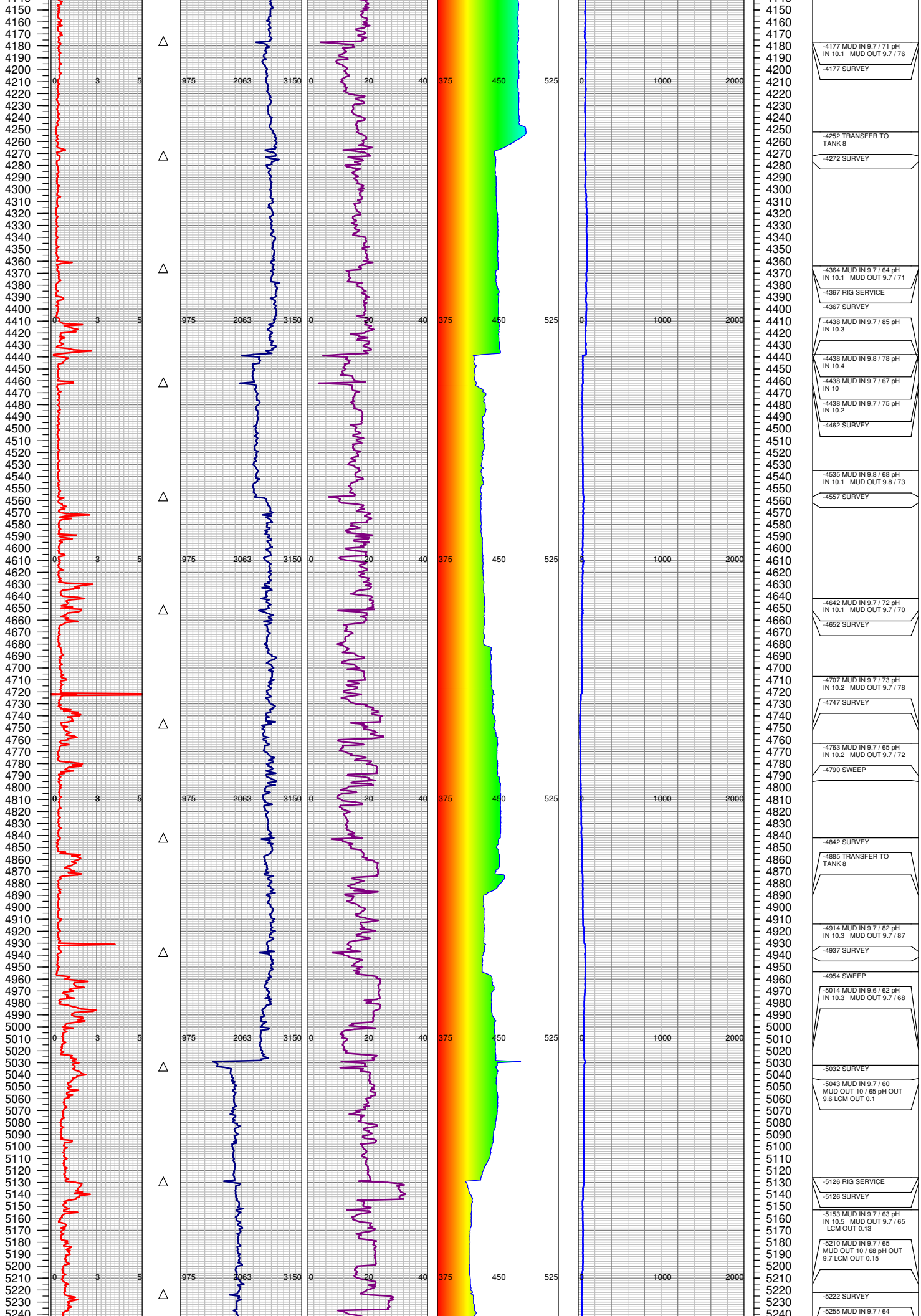
GROUND ELEVATION: 6234'
KELLY BUSHING: 6260'
TVD VS. MD = -189'
DEPTHS LOGGED: 1175'-8945'

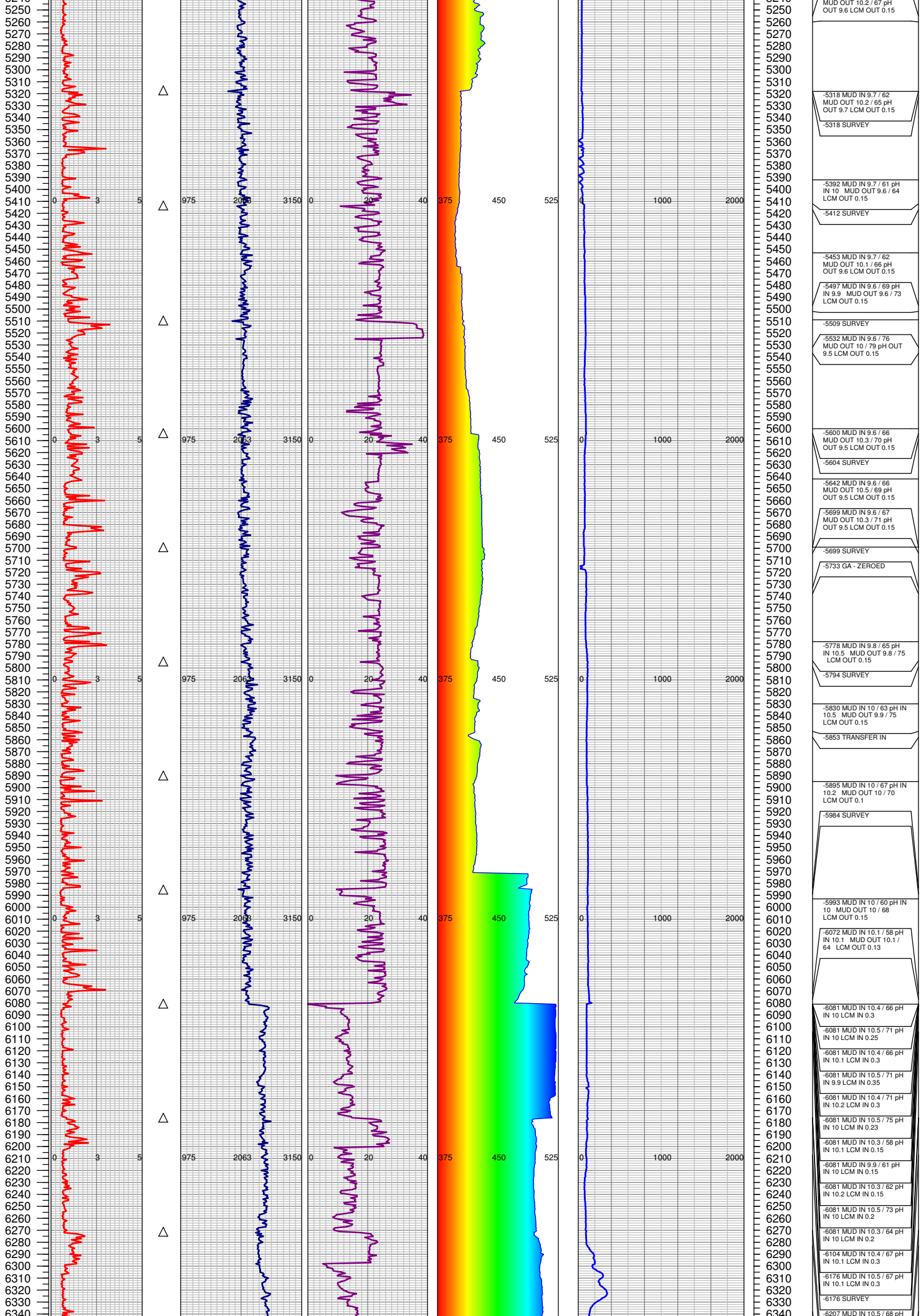
SPUD DATE: 8/4/2014
FGS BEGIN LOGGING: 8/6/2014
TD DATE: 8/14/2014
DATES LOGGED: 8/6/2014 - 8/14/2014











MUD OUT 10.2 / 67 pH
OUT 9.6 LCM OUT 0.15

-5318 MUD IN 9.7 / 62
MUD OUT 10.2 / 65 pH
OUT 9.7 LCM OUT 0.15

-5318 SURVEY

-5392 MUD IN 9.7 / 61 pH
IN 10 MUD OUT 9.6 / 64
LCM OUT 0.15

-5412 SURVEY

-5453 MUD IN 9.7 / 62
MUD OUT 10.1 / 66 pH
OUT 9.6 LCM OUT 0.15

-5497 MUD IN 9.6 / 69 pH
IN 9.9 MUD OUT 9.6 / 73
LCM OUT 0.15

-5509 SURVEY

-5532 MUD IN 9.6 / 76
MUD OUT 10 / 79 pH OUT
9.5 LCM OUT 0.15

-5600 MUD IN 9.6 / 66
MUD OUT 10.3 / 70 pH
OUT 9.5 LCM OUT 0.15

-5604 SURVEY

-5642 MUD IN 9.6 / 66
MUD OUT 10.5 / 69 pH
OUT 9.5 LCM OUT 0.15

-5699 MUD IN 9.6 / 67
MUD OUT 10.3 / 71 pH
OUT 9.5 LCM OUT 0.15

-5699 SURVEY

-5733 GA - ZEROED

-5778 MUD IN 9.8 / 65 pH
IN 10.5 MUD OUT 9.8 / 75
LCM OUT 0.15

-5794 SURVEY

-5830 MUD IN 10 / 63 pH IN
10.5 MUD OUT 9.9 / 75
LCM OUT 0.15

-5853 TRANSFER IN

-5895 MUD IN 10 / 67 pH IN
10.2 MUD OUT 10 / 70
LCM OUT 0.1

-5984 SURVEY

-5993 MUD IN 10 / 60 pH IN
10 MUD OUT 10 / 68
LCM OUT 0.15

-6072 MUD IN 10.1 / 58 pH
IN 10.1 MUD OUT 10.1 /
64 LCM OUT 0.13

-6081 MUD IN 10.4 / 66 pH
IN 10 LCM IN 0.3

-6081 MUD IN 10.5 / 71 pH
IN 10 LCM IN 0.25

-6081 MUD IN 10.4 / 66 pH
IN 10.1 LCM IN 0.3

-6081 MUD IN 10.5 / 71 pH
IN 9.9 LCM IN 0.35

-6081 MUD IN 10.4 / 71 pH
IN 10.2 LCM IN 0.3

-6081 MUD IN 10.5 / 75 pH
IN 10 LCM IN 0.23

-6081 MUD IN 10.3 / 58 pH
IN 10.1 LCM IN 0.15

-6081 MUD IN 9.9 / 61 pH
IN 10 LCM IN 0.15

-6081 MUD IN 10.3 / 62 pH
IN 10.2 LCM IN 0.15

-6081 MUD IN 10.5 / 73 pH
IN 10 LCM IN 0.2

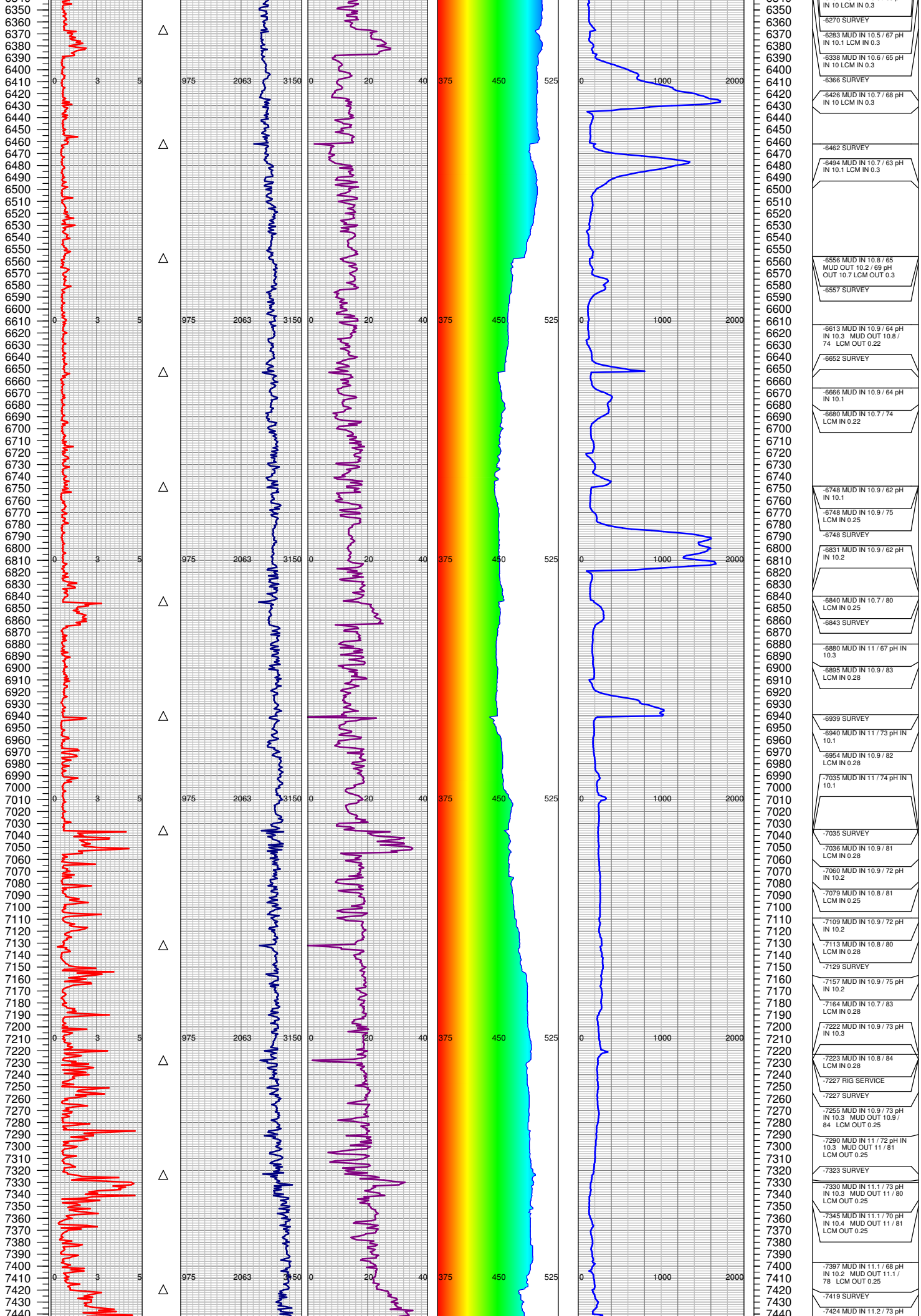
-6081 MUD IN 10.3 / 64 pH
IN 10 LCM IN 0.2

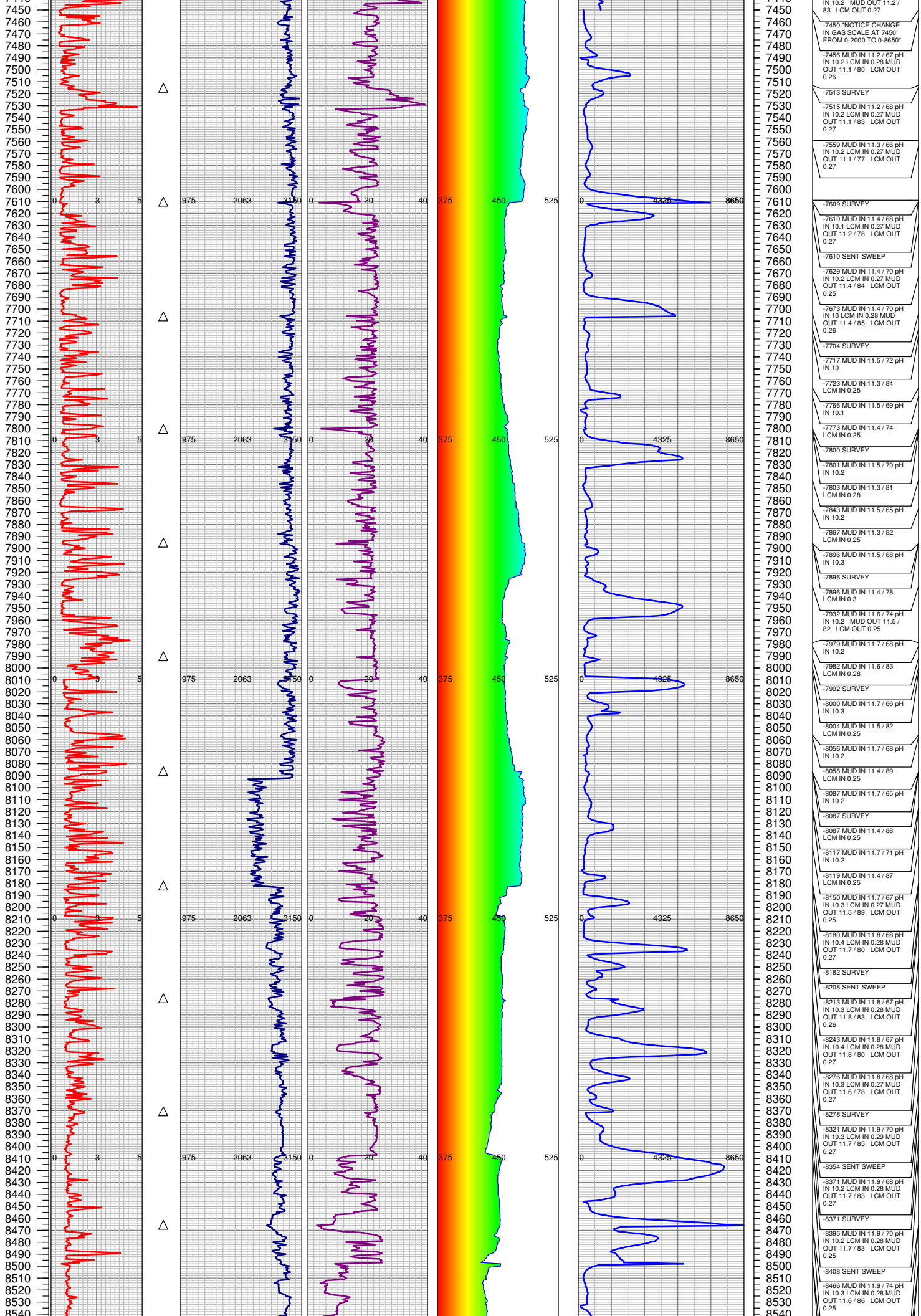
-6104 MUD IN 10.4 / 67 pH
IN 10.1 LCM IN 0.3

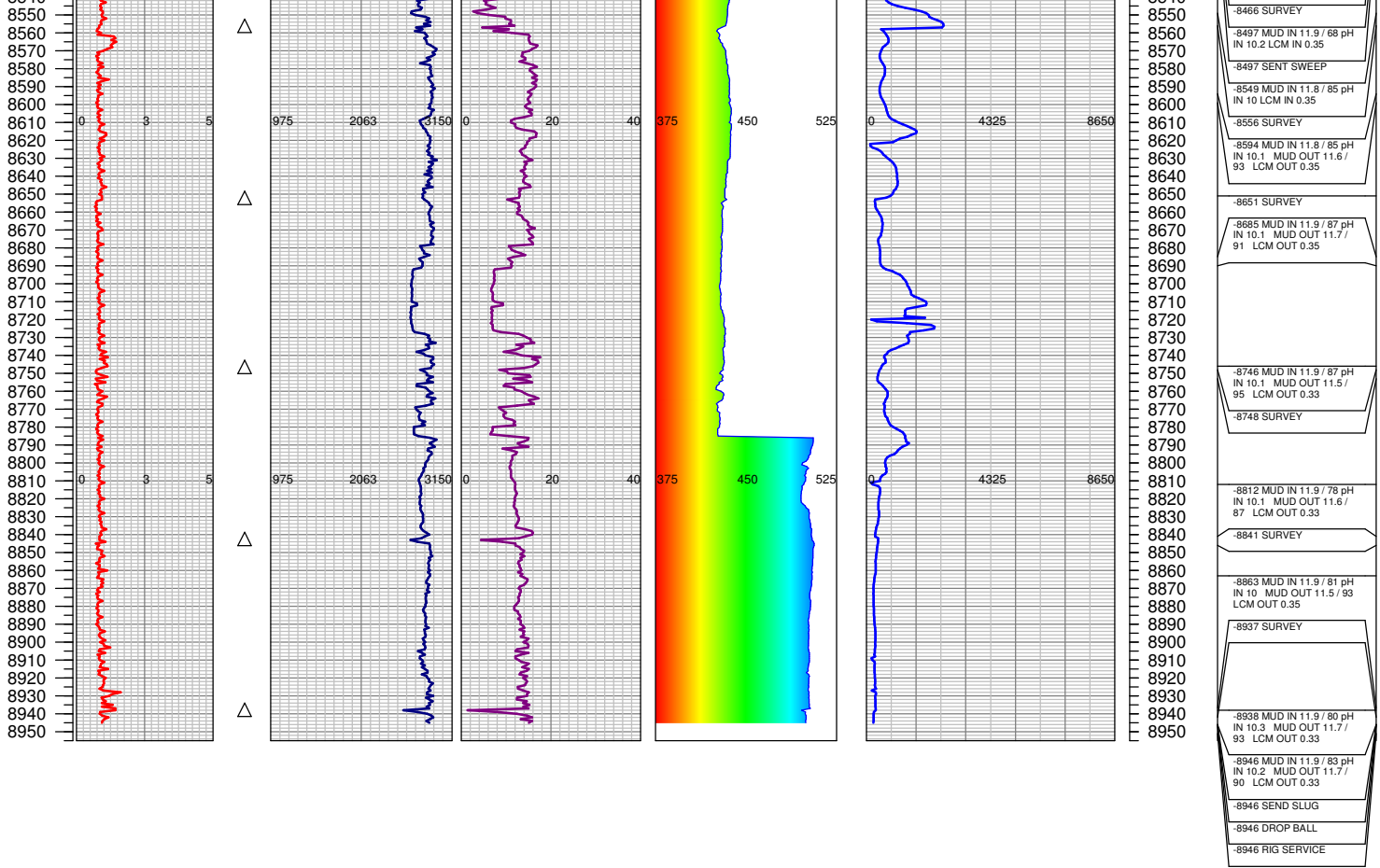
-6176 MUD IN 10.5 / 67 pH
IN 10.1 LCM IN 0.3

-6176 SURVEY

-6207 MUD IN 10.5 / 68 pH







TOTAL DEPTH = 8945'

FGS RELEASED: 8/14/2014