



# RESERVOIR PERFORMANCE MONITOR

Baker Atlas

File No: CH089883 Company WPX ENERGY

Well SAVAGE RWF 334-25

API No: RULISON

County GARFIELD State COLORADO

05045219960000

Location

SHL: 1147' FSL & 1391' FEL

RWF 43-25 PAD BHL: 1428' FSL & 2632' FWL (NWSE)

NABORS 677

SEC 25 TWP 6S RGE 94S

Other Services

RPW

Permanent Datum GL Elevation 6234 ft

Log Measured From KB 26 ft Above P. D.

Drill Measured From KELLY BUSHING

Elevations

KB 6260 ft

DF

GL 6234 ft

Date	01/SEP/14	
Run	ONE	
Service Order	US089883J	
Depth Driller	8900 ft	
Depth Logger	8860 ft	
Bottom Logged Interval	8850 ft	
Top Logged Interval	4699 ft	
Time Started	1100	
Time Finished	1700	
Operator Rig Time	6 HRS	
Type of Fluid in Hole	WATER	
Fluid Density	NA	
Salinity	NA	
Fluid Level	74 ft	
Logged Cement Top	NA	
Wellhead Pressure	0 psi	
Maximum Hole Deviation	NA	
Nominal Logging Speed	10 fpm	
Maximum Recorded Temperature	243 degF	
Reference Log	BAKER HUGHES BOND LOG	
Reference Log Date	01/SEP/14	
Equipment No.	4271	GRAND UCTION
Recorded By	FLOYD RENEAU	
Witnessed By	BOB CADY	

- FOLD HERE

In making interpretations of logs, our employees will give the customer the benefit of their best judgement. But since all interpretations are opinions based on inferences from electrical or other measurements, we cannot, and we do not guarantee the accuracy or correctness of any interpretation. We shall not be liable or responsible for any loss, cost, damages, or expenses whatsoever incurred or sustained by the customer resulting from any interpretation made by any of our employees.

Borehole Record		
Bit Size	From	To
13.5 in	26 ft	1119 ft
8.75 in	1119 ft	8900 ft

Casing Record				
Size	Weight	Grade	From	To
9.625 in			26 ft	1119 ft
4.5 in	11.6 lbm/ft	I-80	26 ft	8900 ft

Remarks
All data on this log is shifted and depth matched using the Gamma Ray curve to the Baker Hughes bond log dated 9/1/2014 at the client's request.
The amount of linear shift is 2.5 feet.
Logged in PNC-3D mode.
BHT = 243 °F
SJ = 5637'-5658'

Equipment Data					
Run	Trip	Tool	Series Number	Serial Number	Position
1	1	TEMP	8255XA	Z120516	FREE
1	1	RPM	8281FA	10401926	FREE
1	1	RPM	8281PA	10414345	FREE
1	1	RPM	8281EA	10190984	FREE
1	1	GR	2812LA	10274382	FREE
1	1	TEL/CCL	8248ED	10460262	FREE
1	1	PCM	8250EA	10586851	FREE

MAIN SECTION  
PNC 3-D MODE

SPL PROCESSING

MEASUREMENT TYPE	PARAMETER	VALUE	UNITS	TOP	BOTTOM
PNC Porosity	Borehole	Cased		4673.531	8863.938
PNC Porosity	Borehole Size	8.750	inch	4673.531	8863.938
PNC Porosity	Casing Size	4.500	inch	4673.531	8863.938
PNC Porosity	Gas Filled	Non Gas Filled		4673.531	8863.938
PNC Porosity	Matrix	Sandstone		4673.531	8863.938
TPS Pressure	Temperature Corr. Source	Fixed (72.00)	degF	4673.531	8863.938

DEPTH OFFSETS  
(for Acquired Curves)

SERIES	DEPTH OFFSET	ACQUIRED CURVES
8248ED	-26.519	FLTM
8248ED	-24.519	CCL CHV
2812LA	-21.969	GR
8281XA	-12.702	HVC3Q0 SEQ3 AMA3 AML3 BKX CXS CPT3Q0 CPT3Q2 CPT3Q3 CPT3Q4 ET3 IXS MCS3 MCS3Q0 QCAL3 RGN3 RICX SDA3

8281XA -12.291

SDL3 SGA3 SGL3 STA3 XS ASPEC3  
AMB3 AMF3 CHF3 IXSC IXSN RATO23  
RICXC RIN13C RIN23 RIN23C SD3D SG3D  
SGB3 SGF3 WDT3 CXSR IXSR XSR  
RICXR

HVC2Q0 SEQ2 AMA2 AMB2 AMF2 AML2  
BKL CHF2 CLS CPT2Q0 CPT2Q2 CPT2Q3  
CPT2Q4 ET2 ILS LS MCS2 MCS2Q0  
QCAL2 RGN2 RICL RONE23 RTWO23 SDA2  
SDL2 SGA2 SGB2 SGF2 SGK2 SGL2  
STA2 ASPEC2 ILSC ILSN WDT2 RICLC  
CLSR ILSR LSR RICLR

8281XA -12.041

CPRS HVC1Q0 MV SEQ SEQ1 AMA1  
AMB1 AME1 AMF1 AML1 BKS CHF1  
CSS CORB CORF CPT1Q0 CPT1Q2 CPT1Q2A  
CPT1Q2B CPT1Q2C CPT1Q3 CPT1Q4 CPT1Q5 ET1  
G1 G2 GE1S GE2S ISS MCS1  
MCS1Q0 QA1 QCAL1 QM1 RATO RATO13  
RBOR RGN1 RICS RIN RONE RPOR  
RTWO RIN13 RONE13 RTWO13 SALB SC1  
SDA1 SDL1 SGA1 SGB1 SGBC SGE1  
SGF1 SGFC SGK1 SGL1 SS SS2  
STA1 PD1S PD2S PD3S MD1S MD2S  
MD3S DG1S DG2S DG3S PD1M PD2M  
PD3M MD1M MD2M MD3M DG1M DG2M  
DG3M MVS MA MVM FILV IAM  
TA PVM PVS IAS SSTAT QPD1  
QPD2 QPD3 QMD1 QMD2 QMD3 QDG1  
QDG2 QDG3 QMA QTA QFILV QMV  
QPV QIA DERR DCNT QPK1 QSA1  
PKS1 ASPEC1 H0C FE2XC ISSC RINC  
ISSN RDEN WDT1 RICSC CSSR G1R  
G2R ISSR SSR SS2R RATOR RATO13R  
RBORR RICSR RINR RIN13R RONE RPORR  
RTWOR

8255XA -0.792

PTFS PTMS

8255XA -0.775

SPF1 SPFQ TSCP TSDP

8255XA 0.000

DTEM TEMP TNF

SYSTEM 0.000

TEN TTEN

Created by : RPM9, v5.3.1.0

Plotted by : PlotMgr, v5.4.504

Company : WPX ENERGY

Well : SAVAGE RWF 334-25

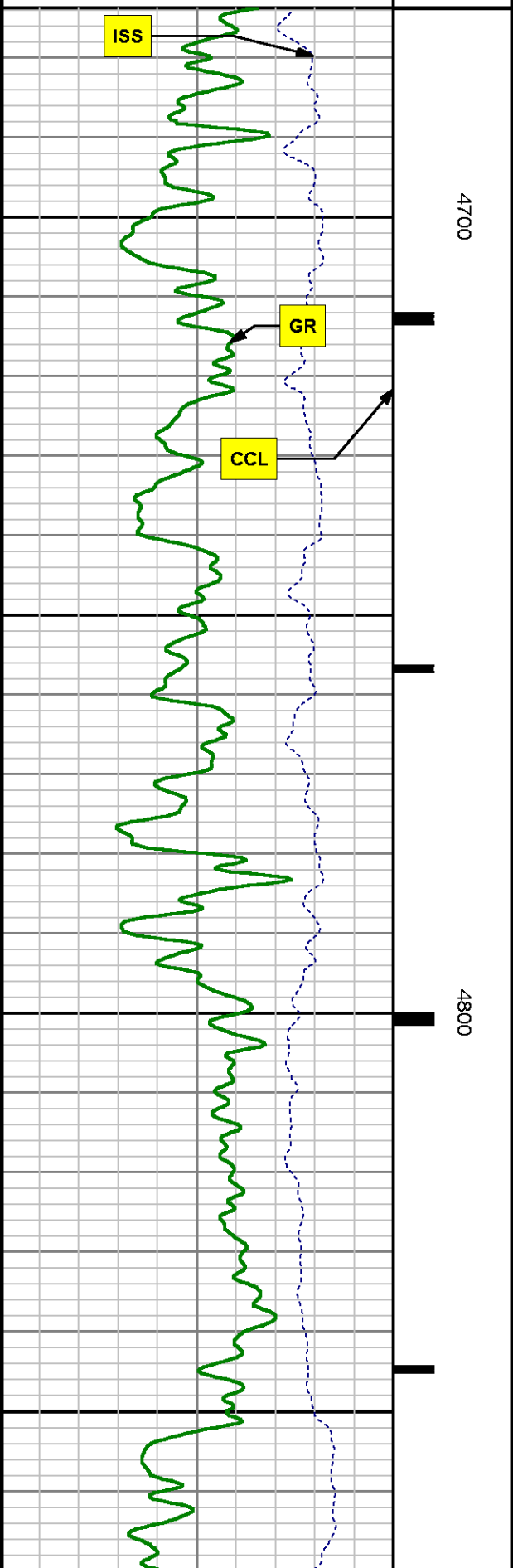
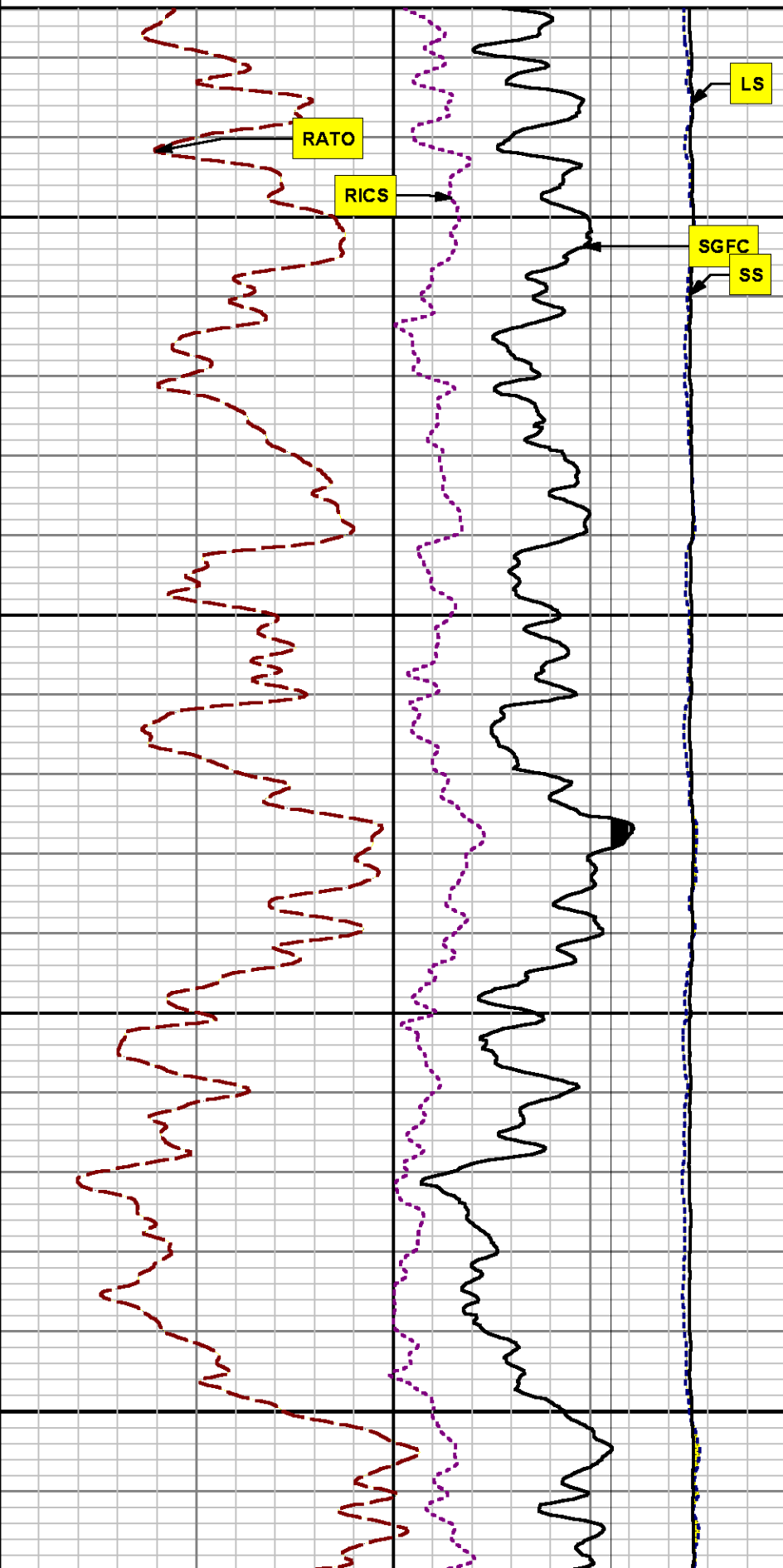
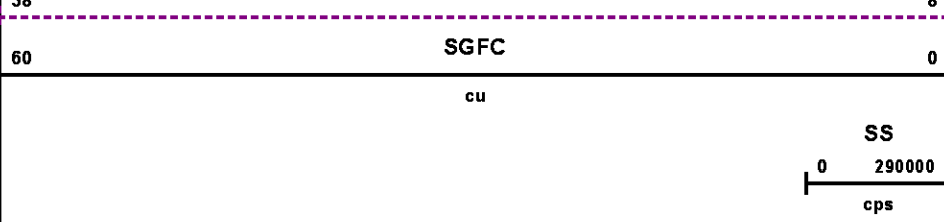
File Name : d:\welldata\wpx\rwf 334-25\334rpm\main.xtf

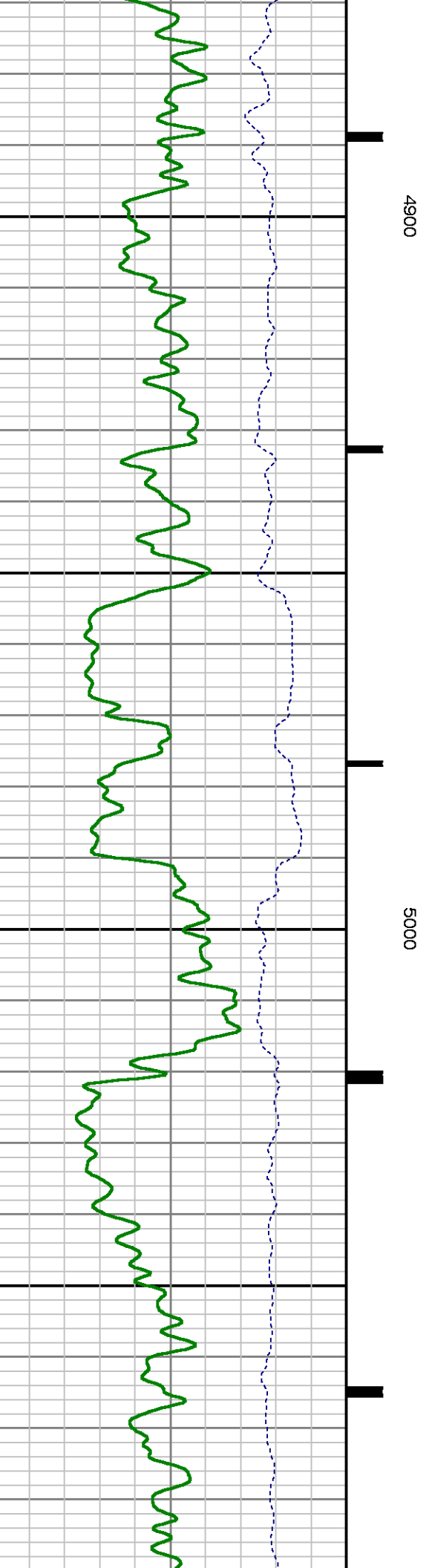
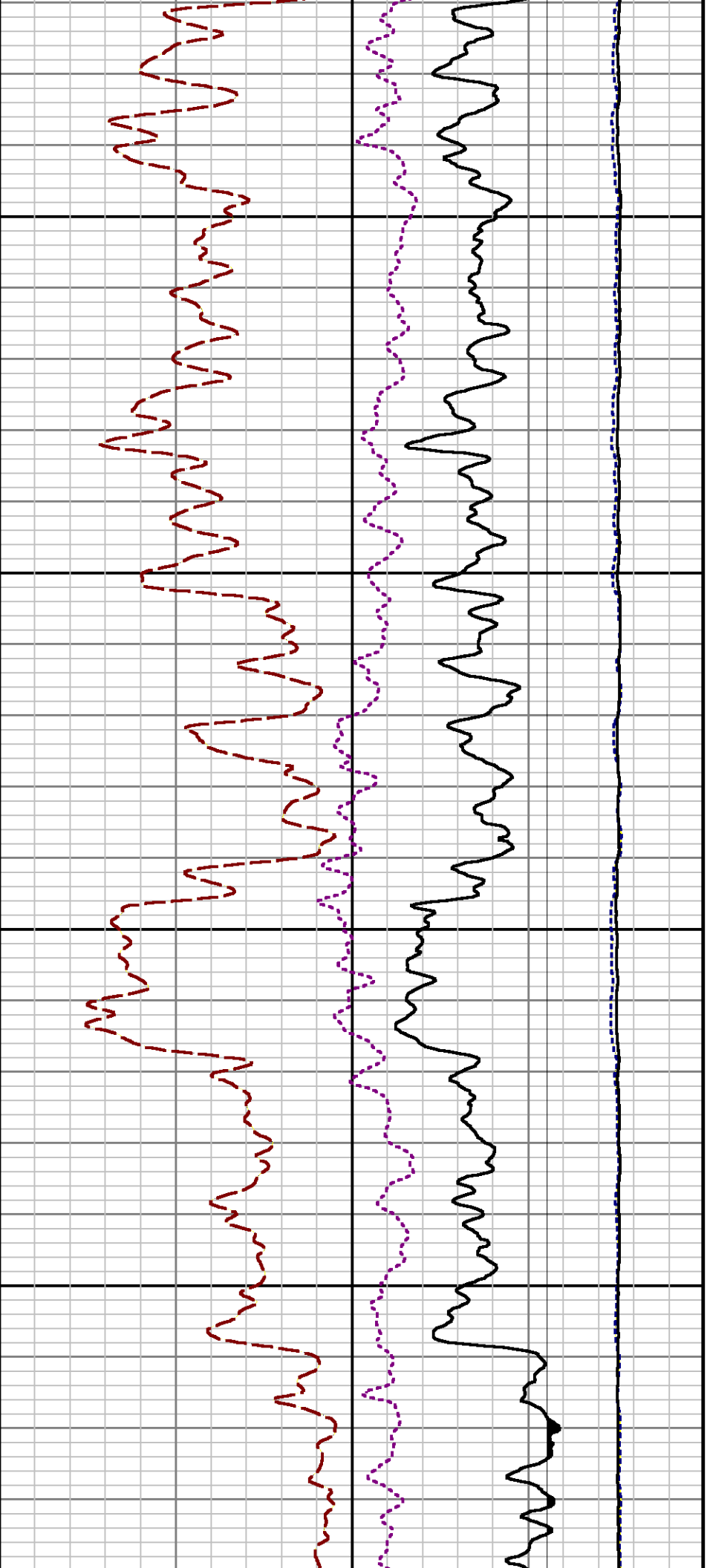
Mode : PlotMgr 5.4.504

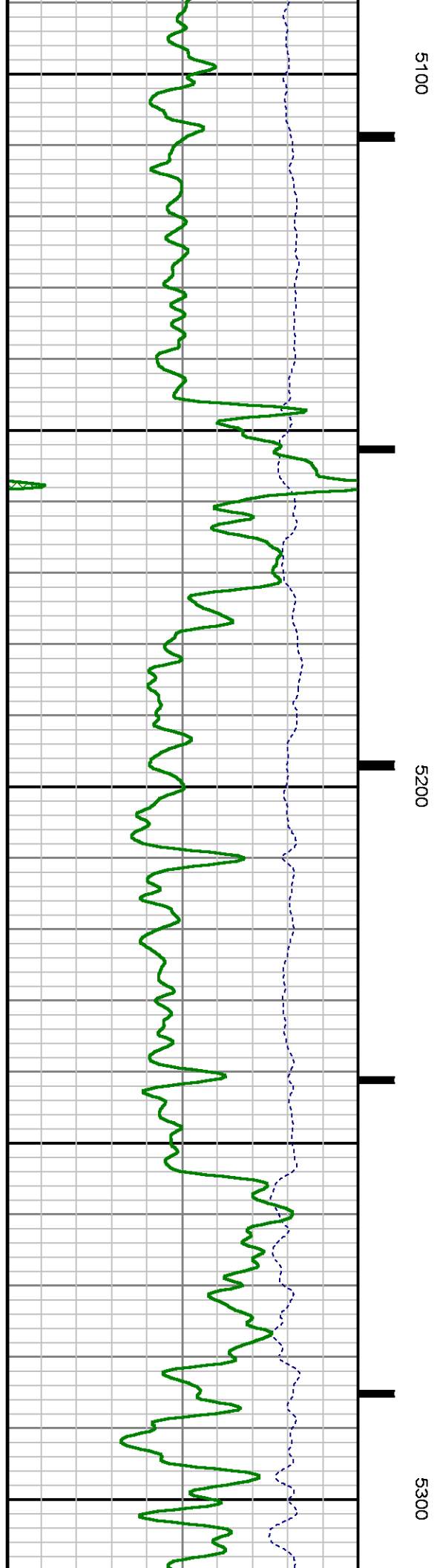
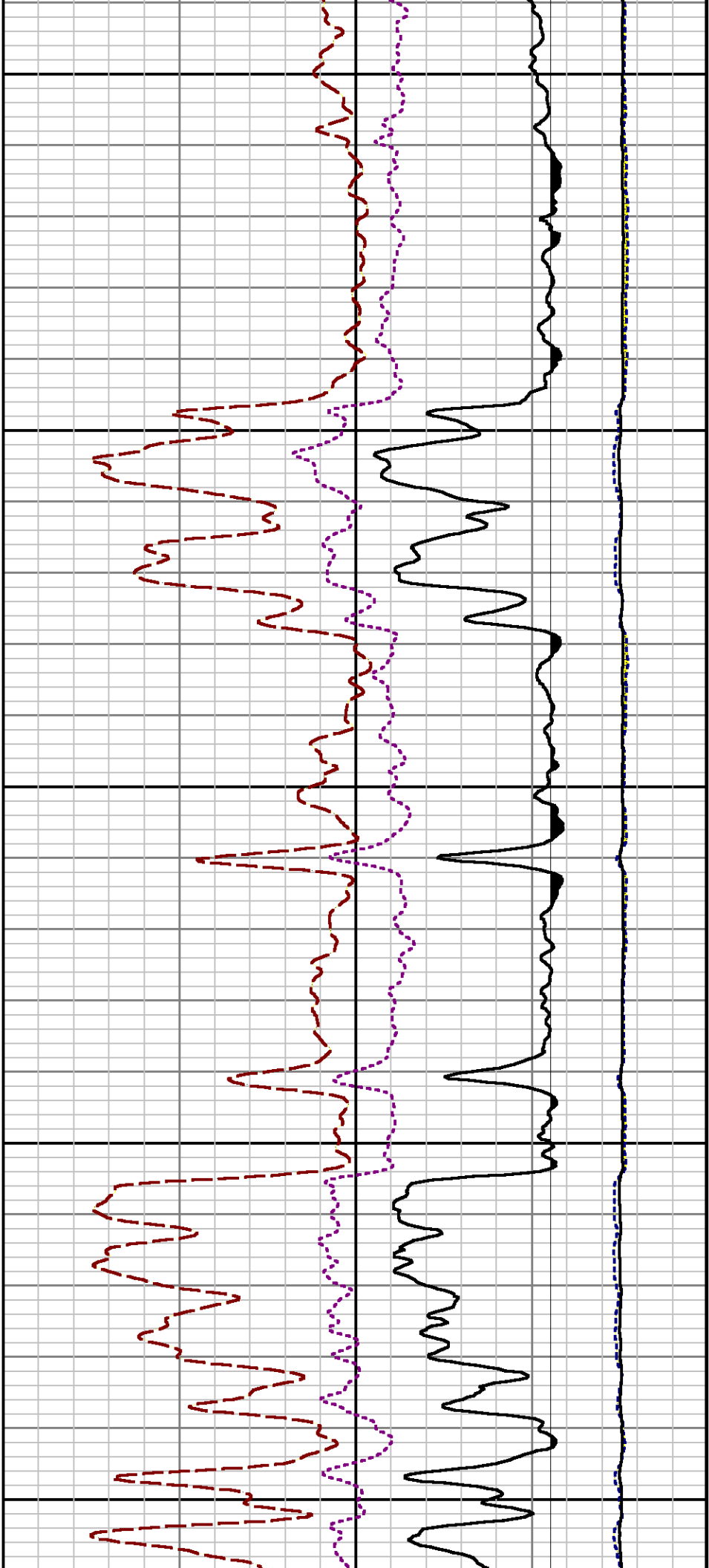
Interval : 4673.72 - 8864.72 feet UP

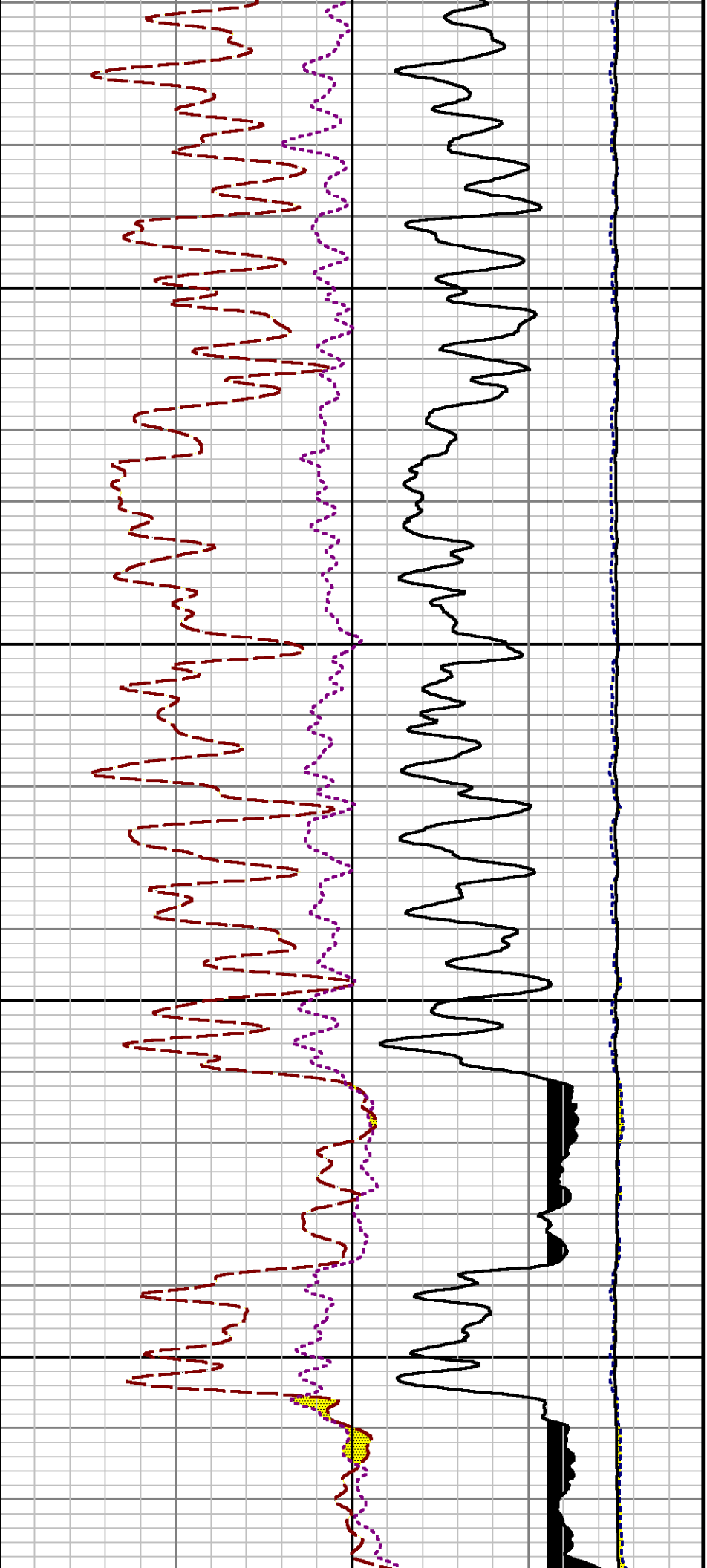
Created : 9/1/2014 12:03:49 PM





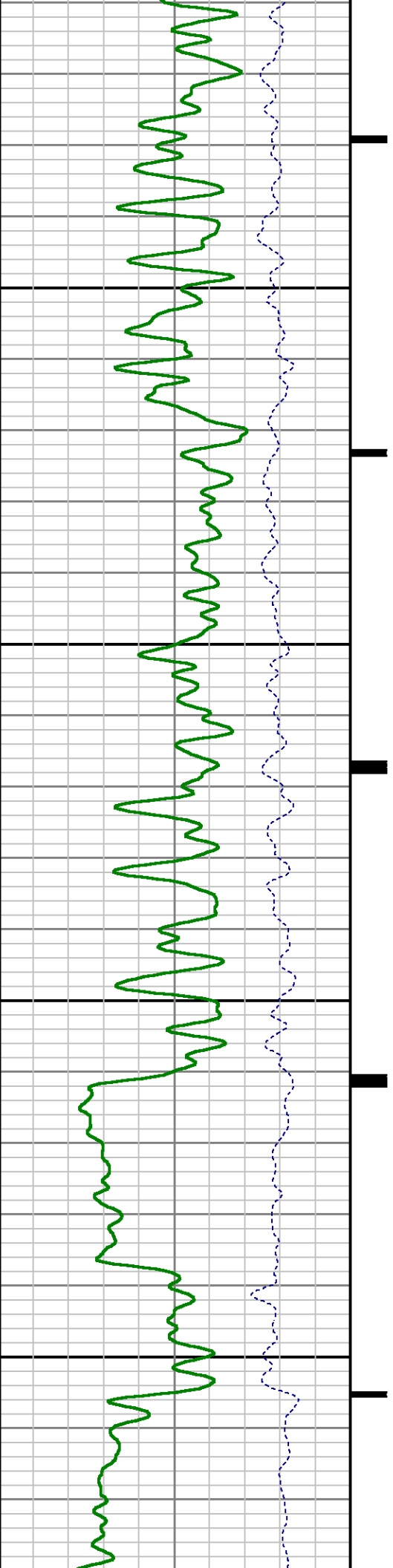


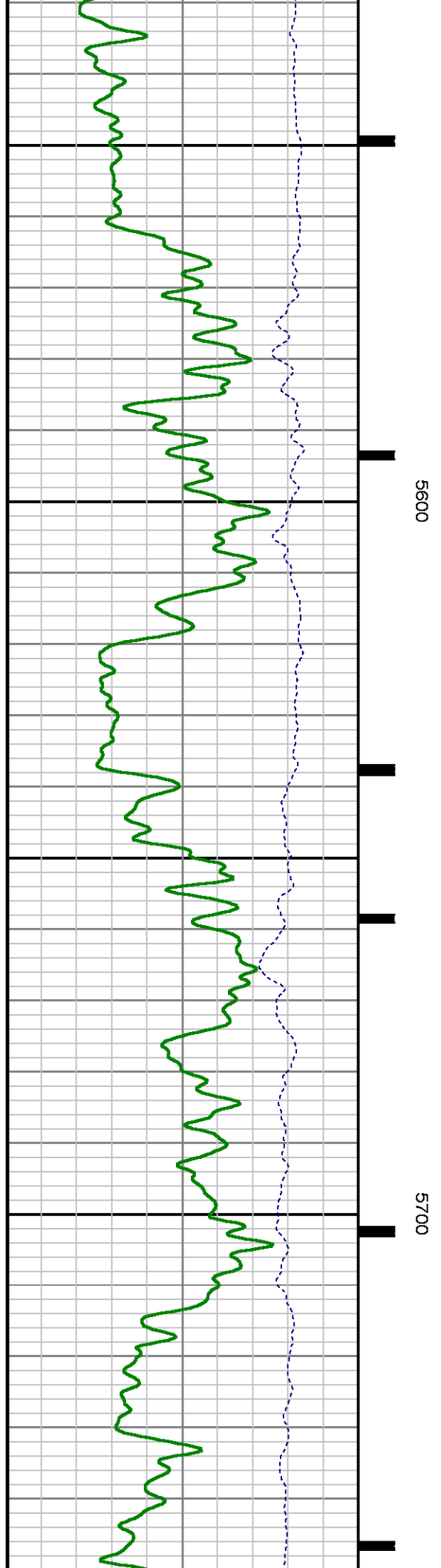
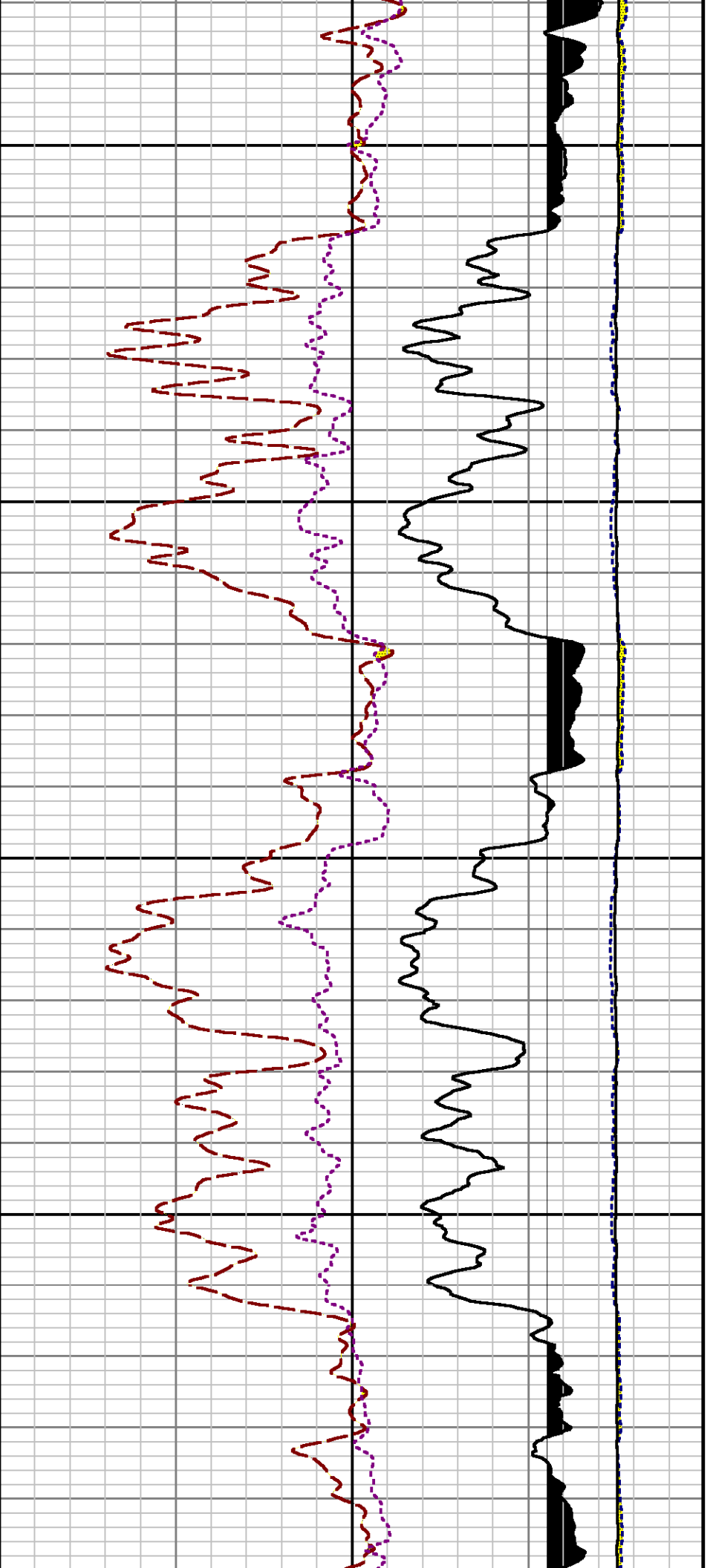




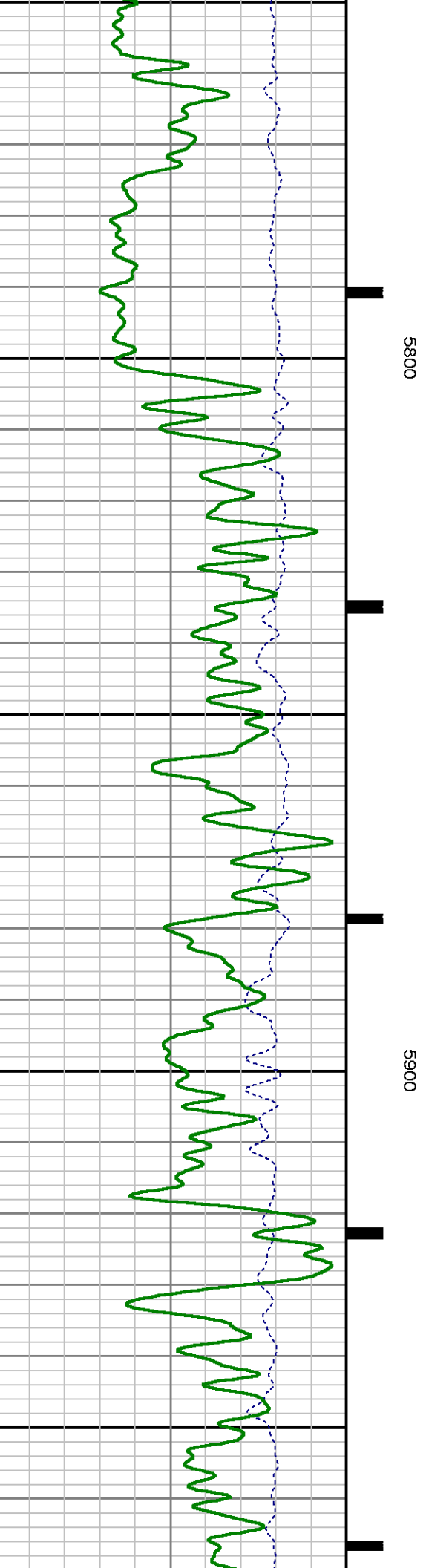
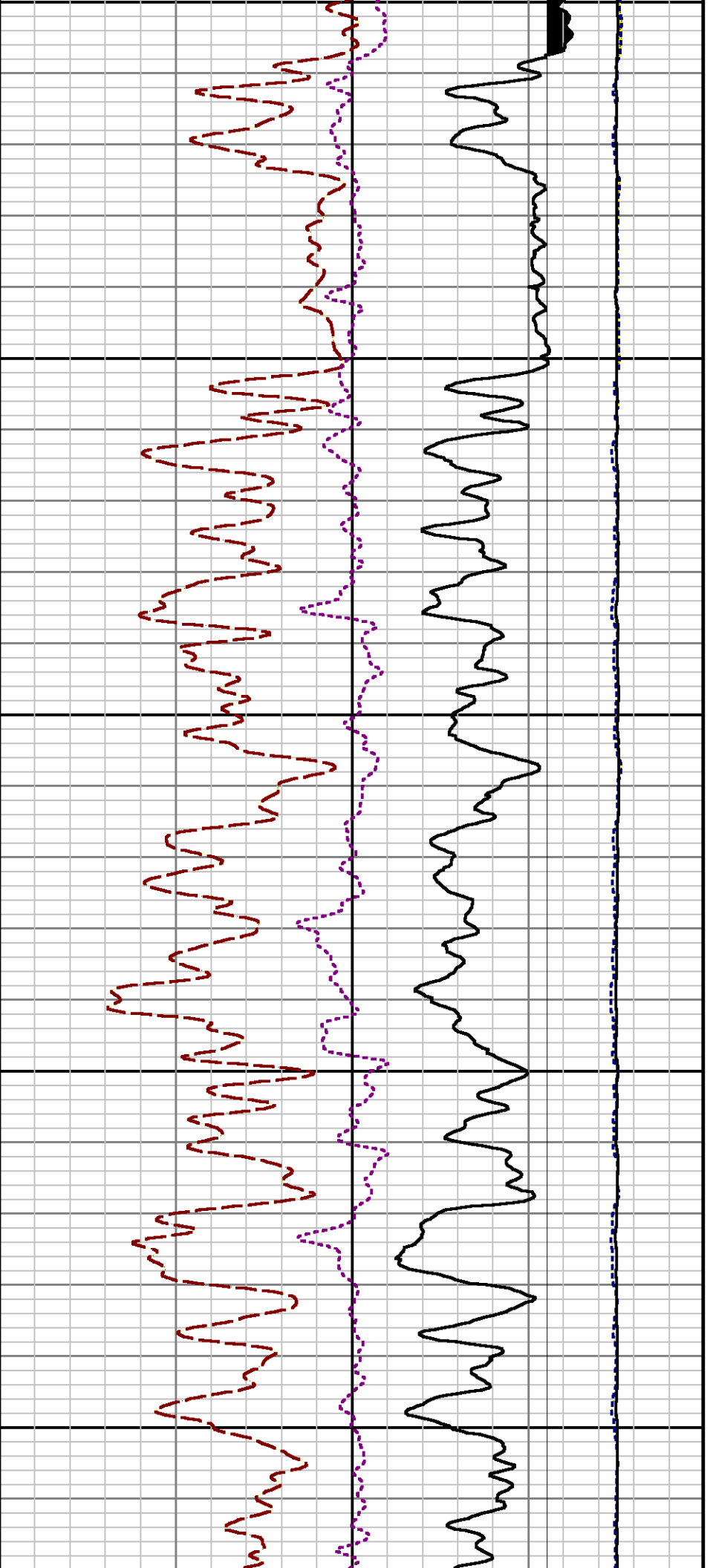
5400

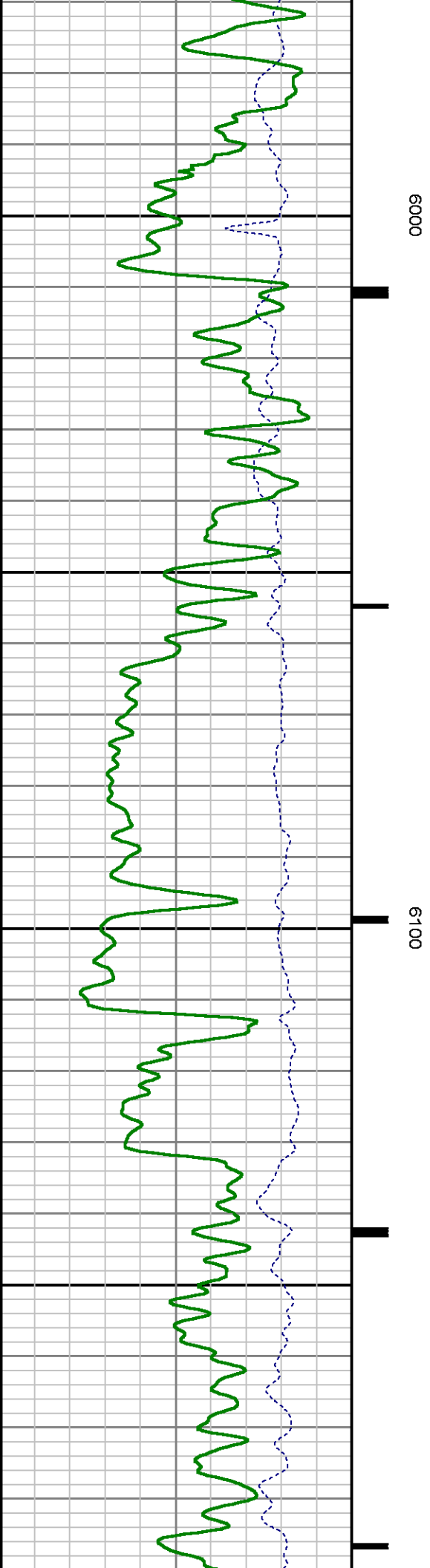
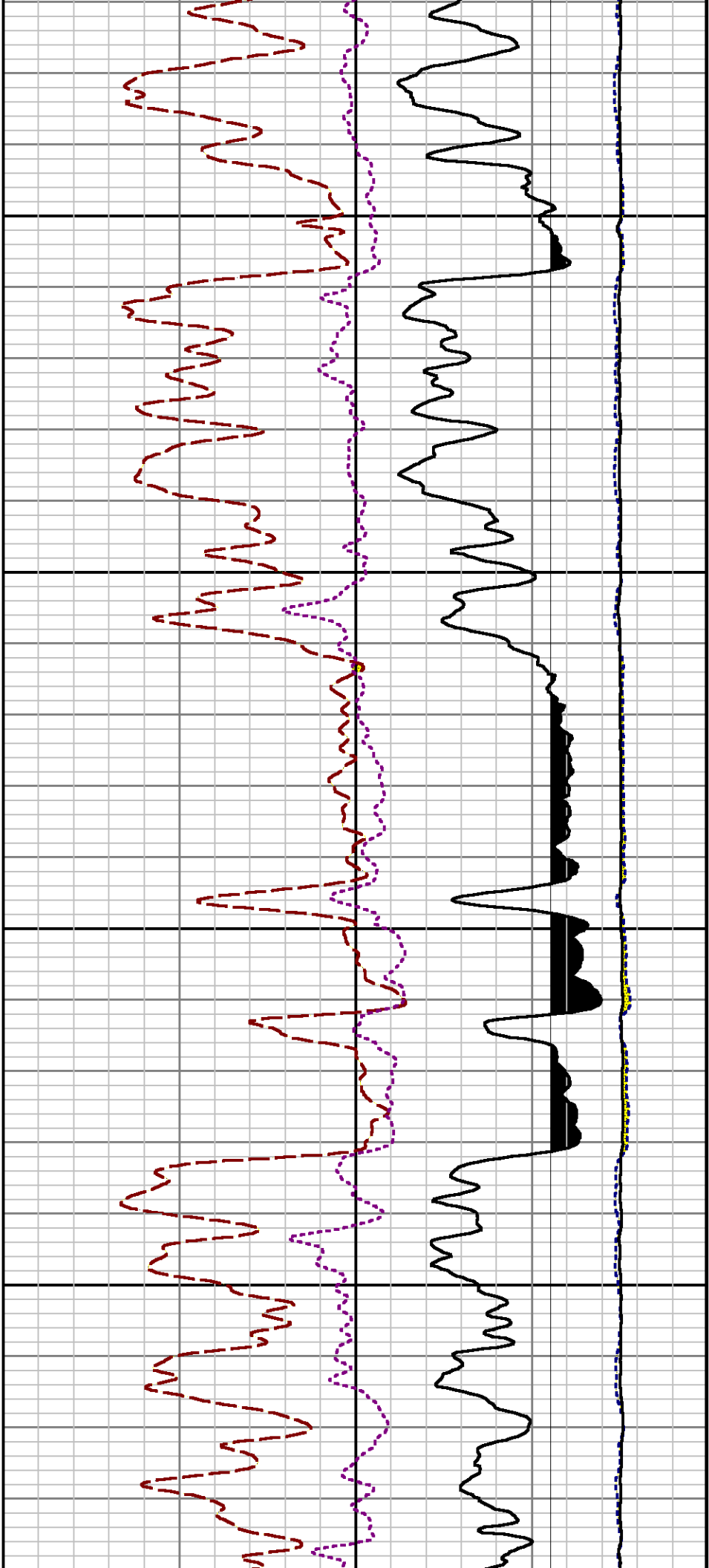
5500

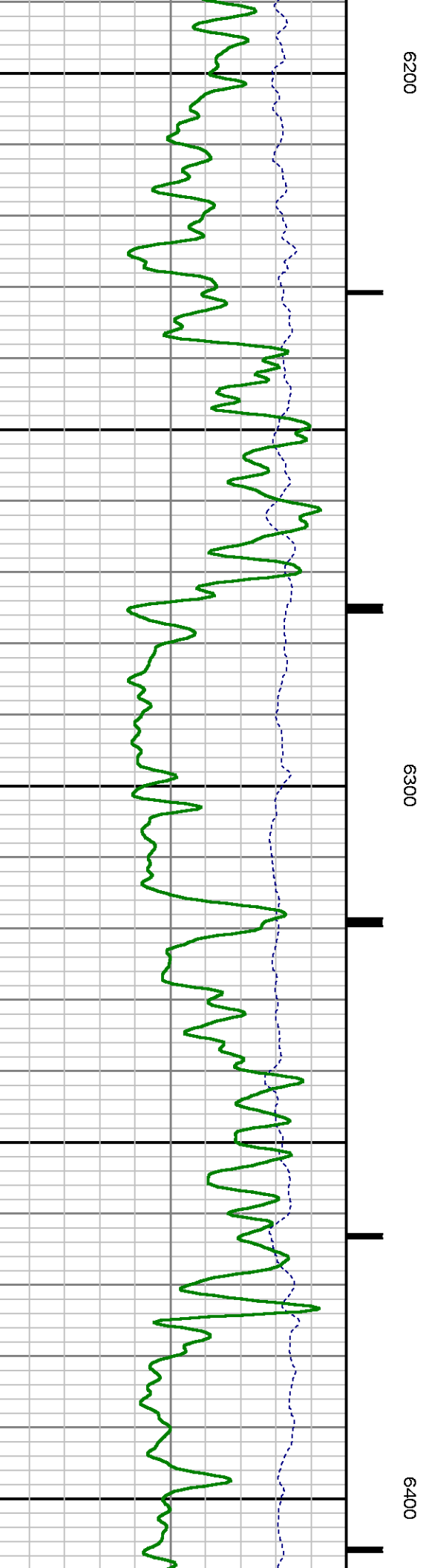
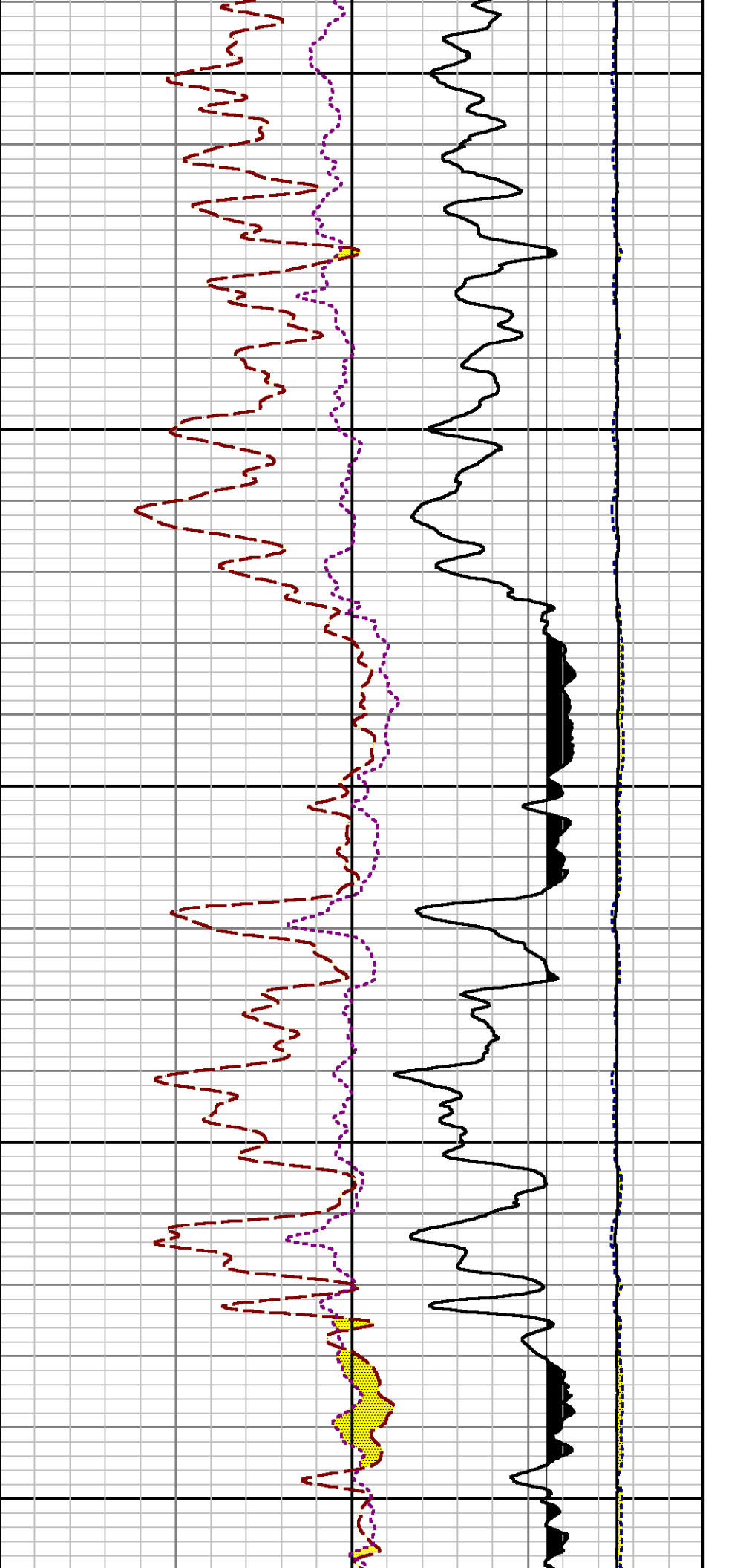


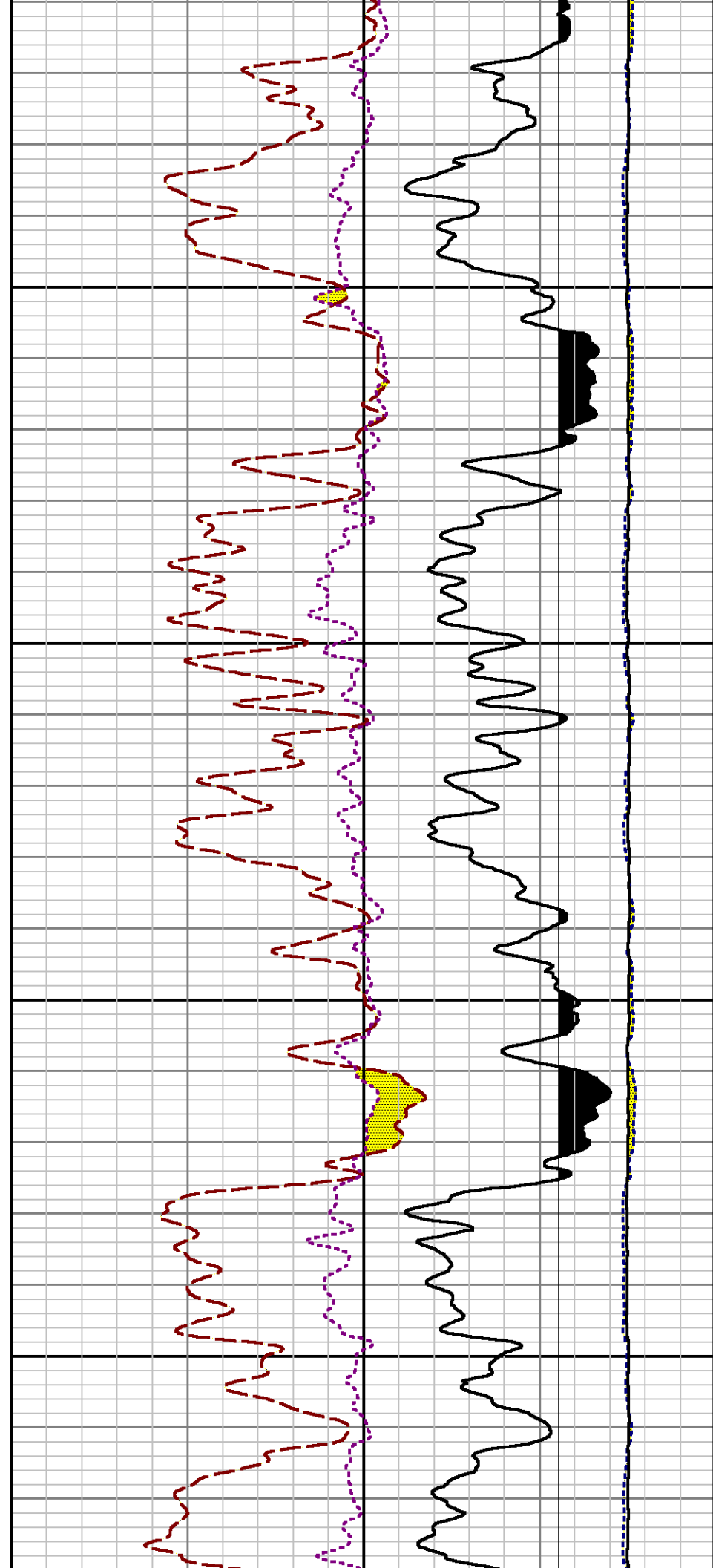
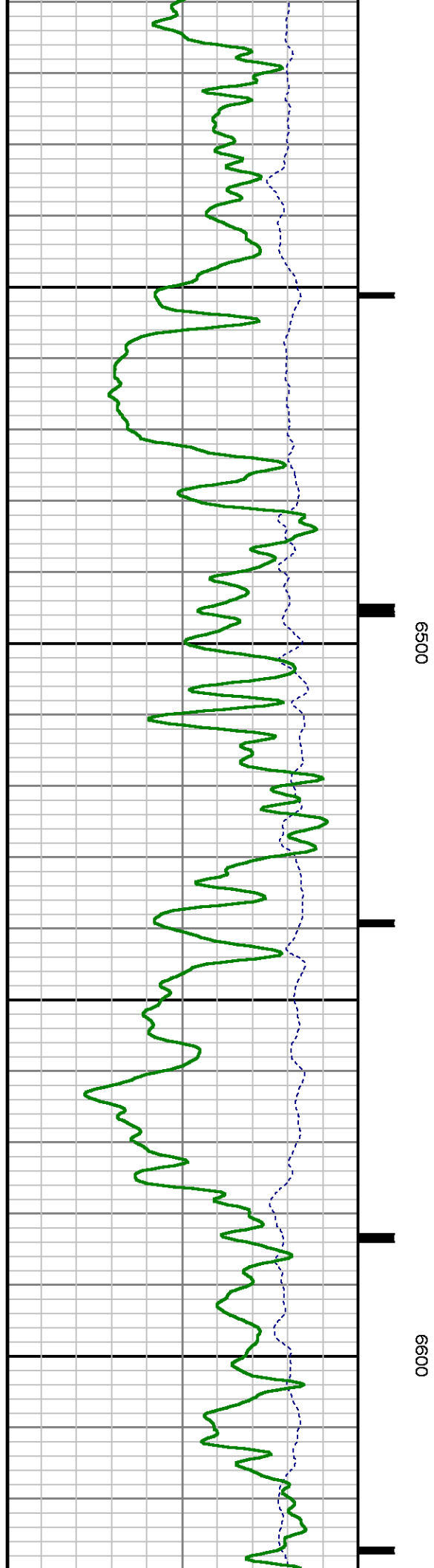


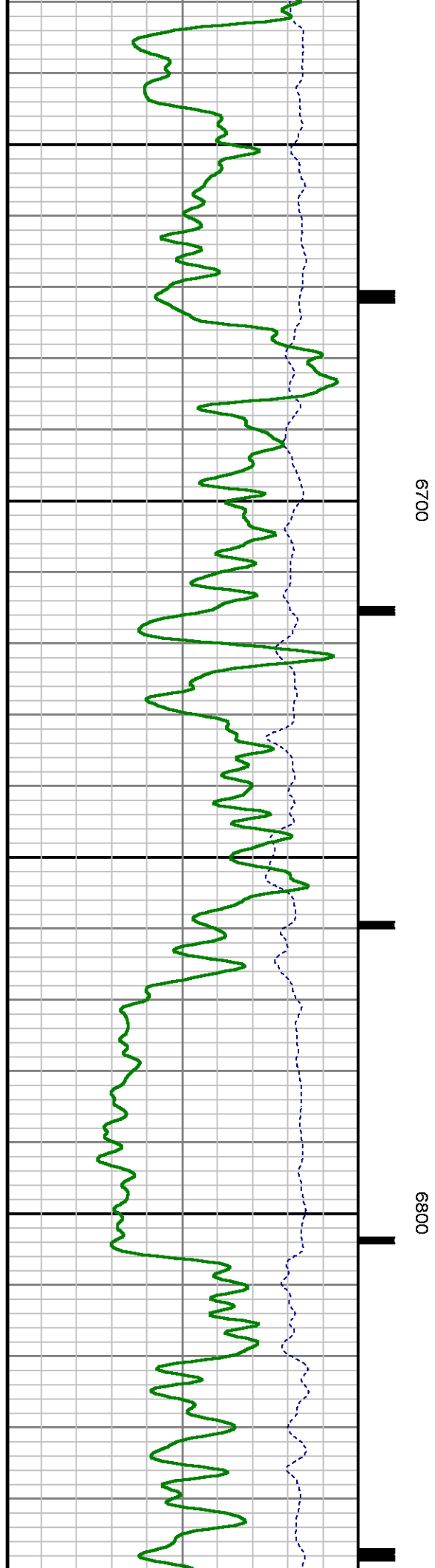
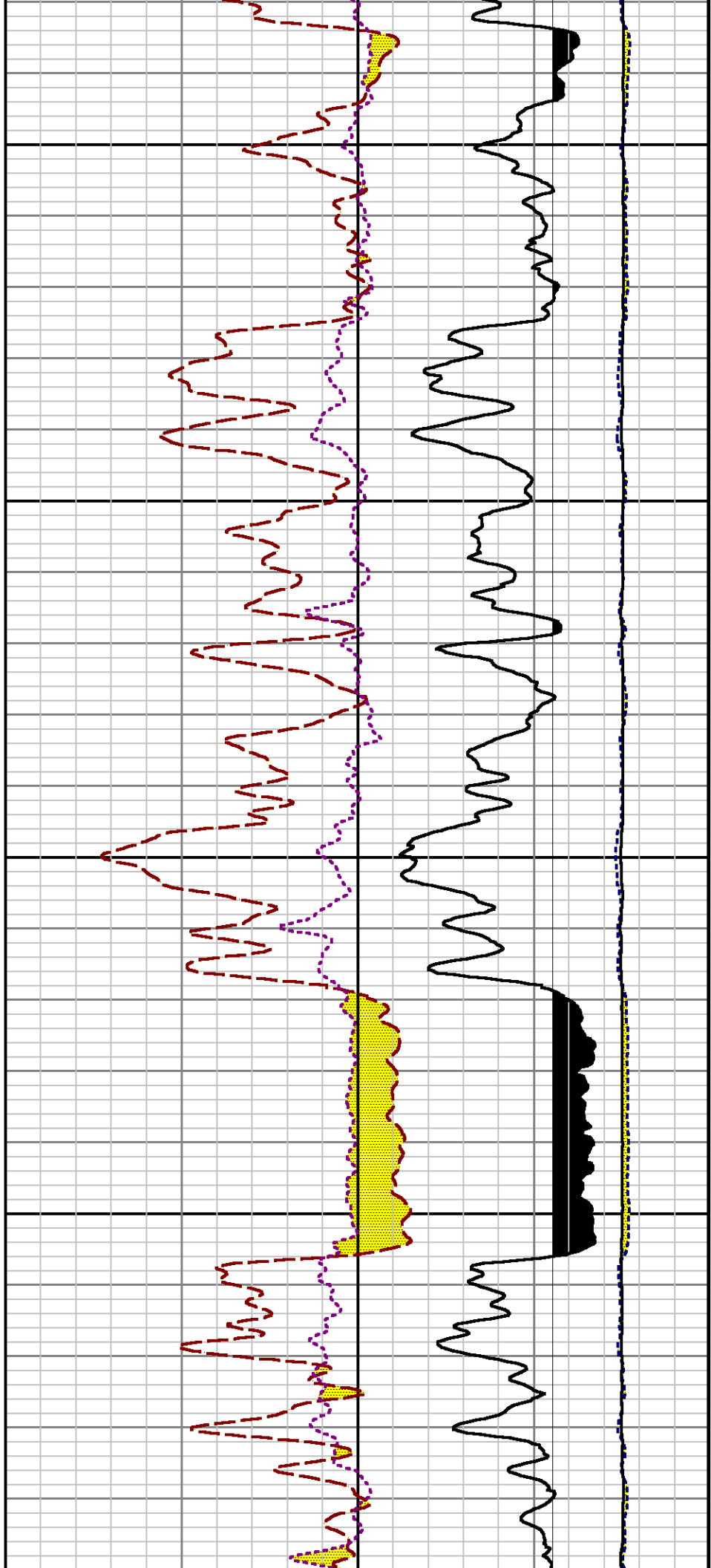


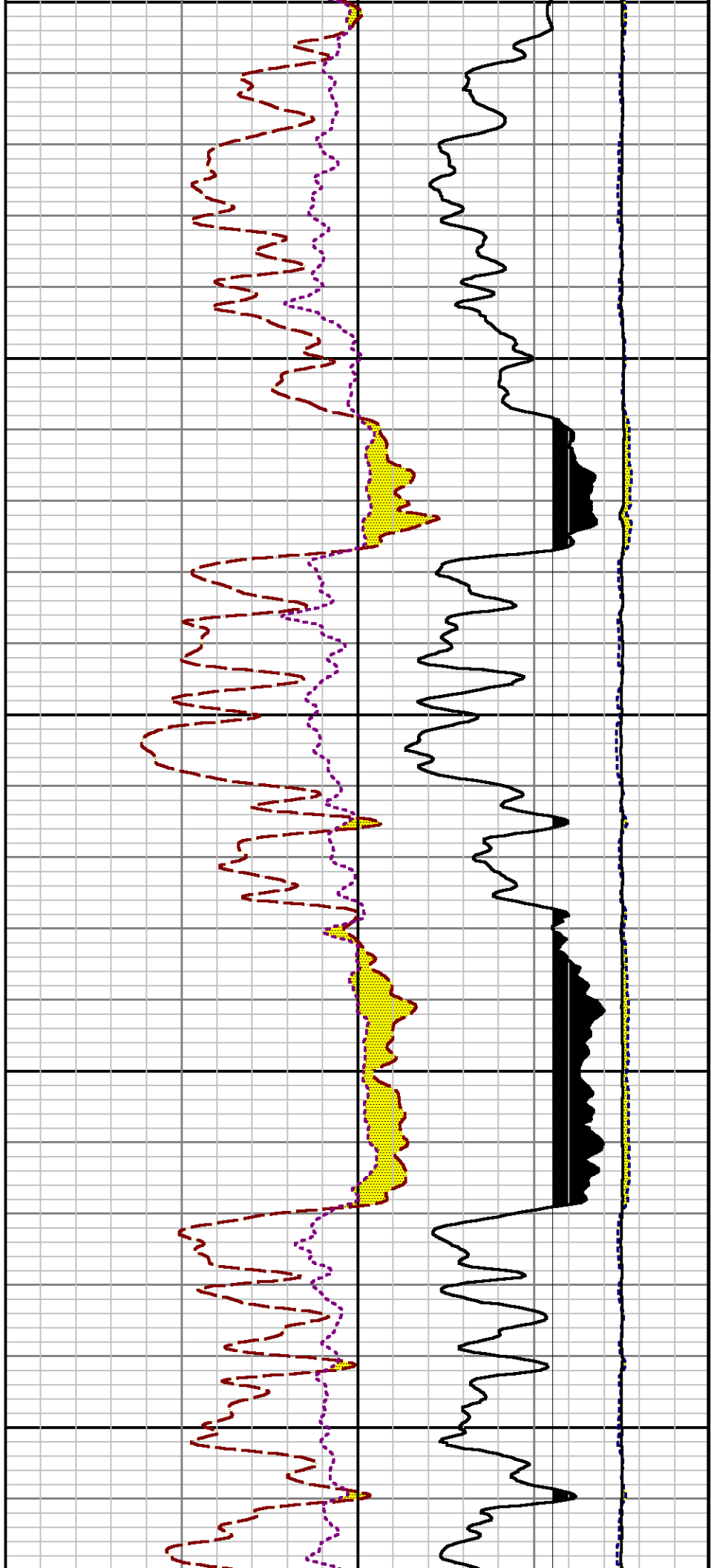












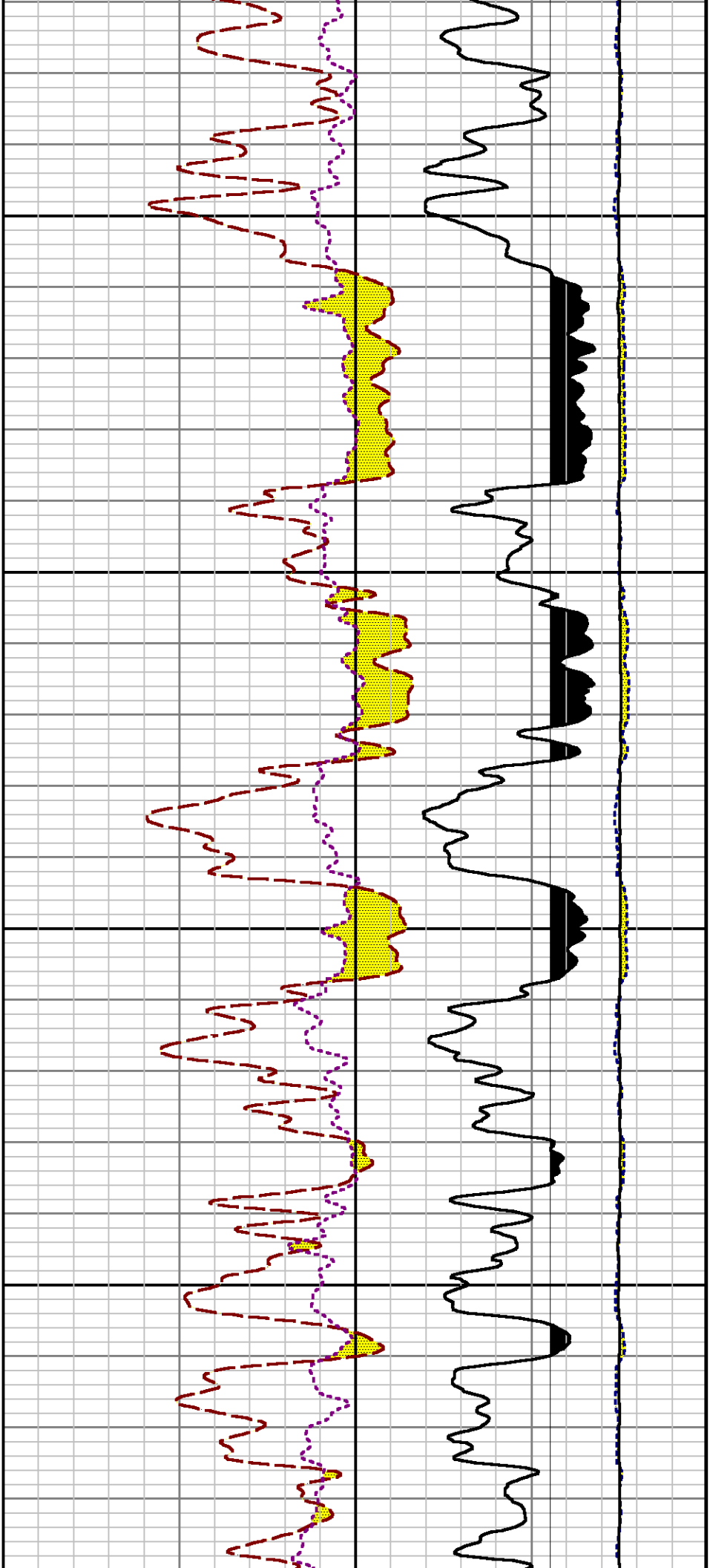
0000

0600

1200

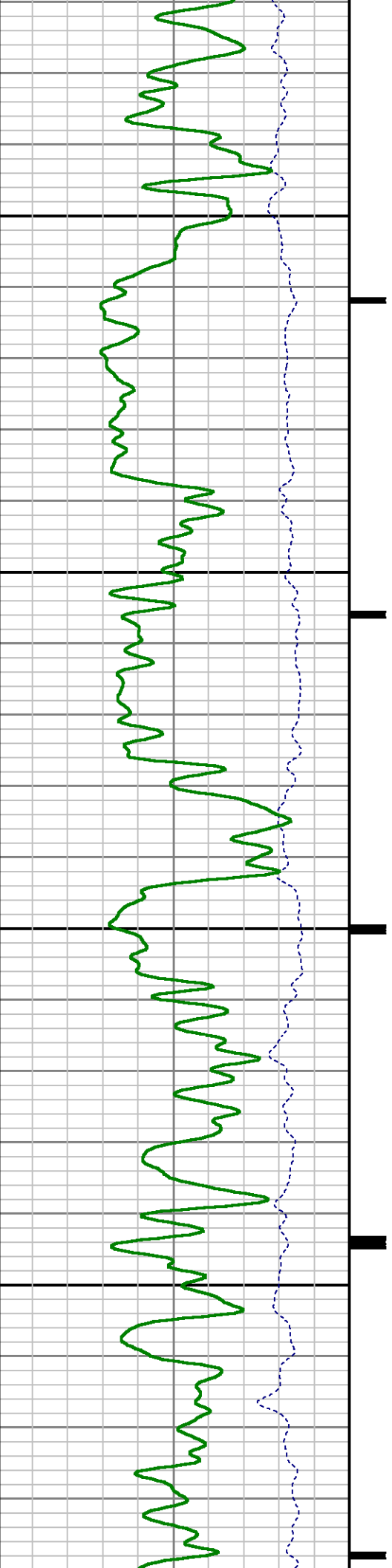
1800

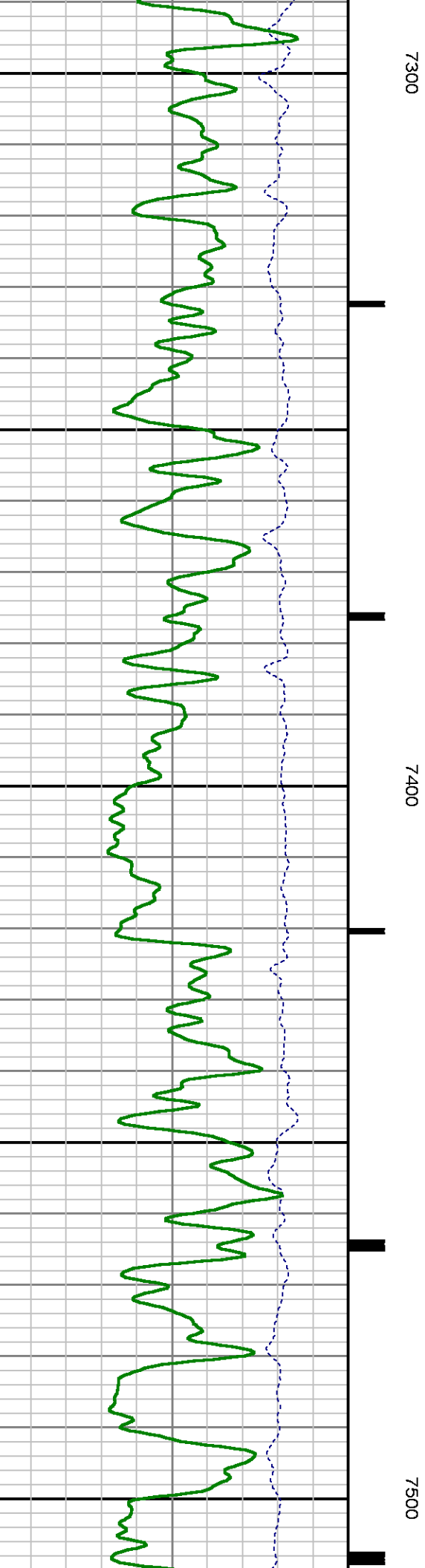
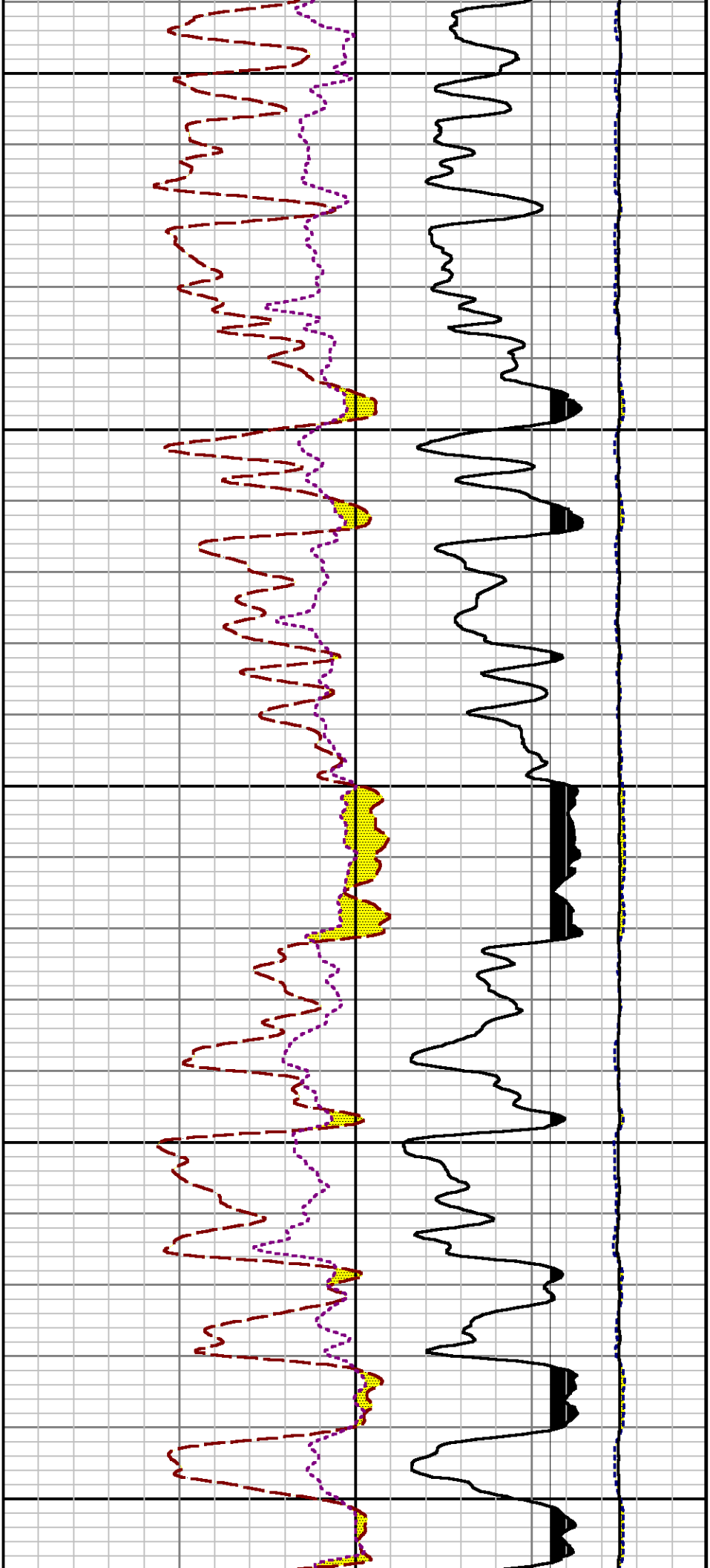
2400



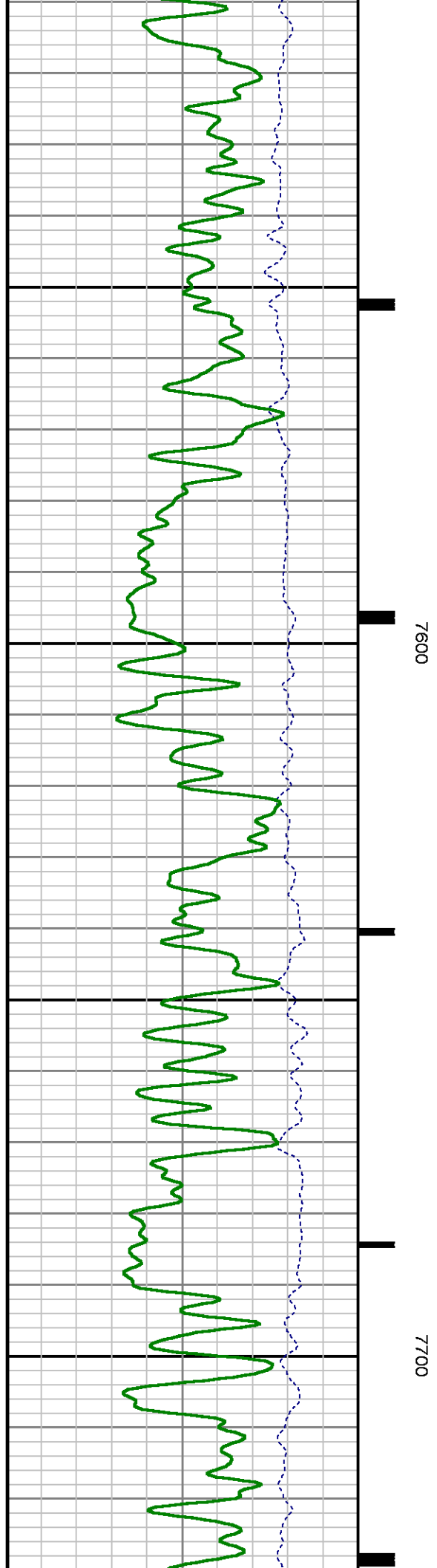
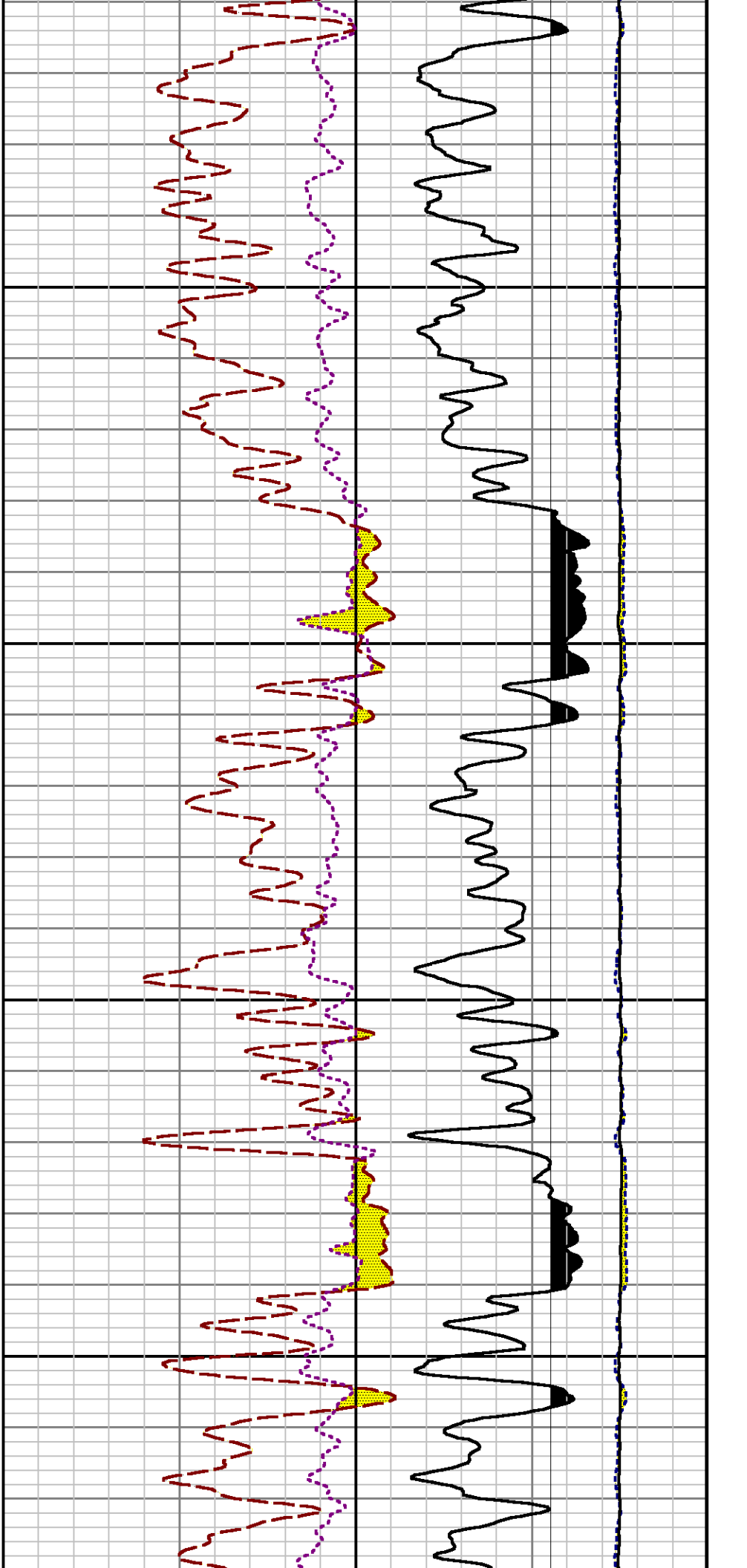
7100

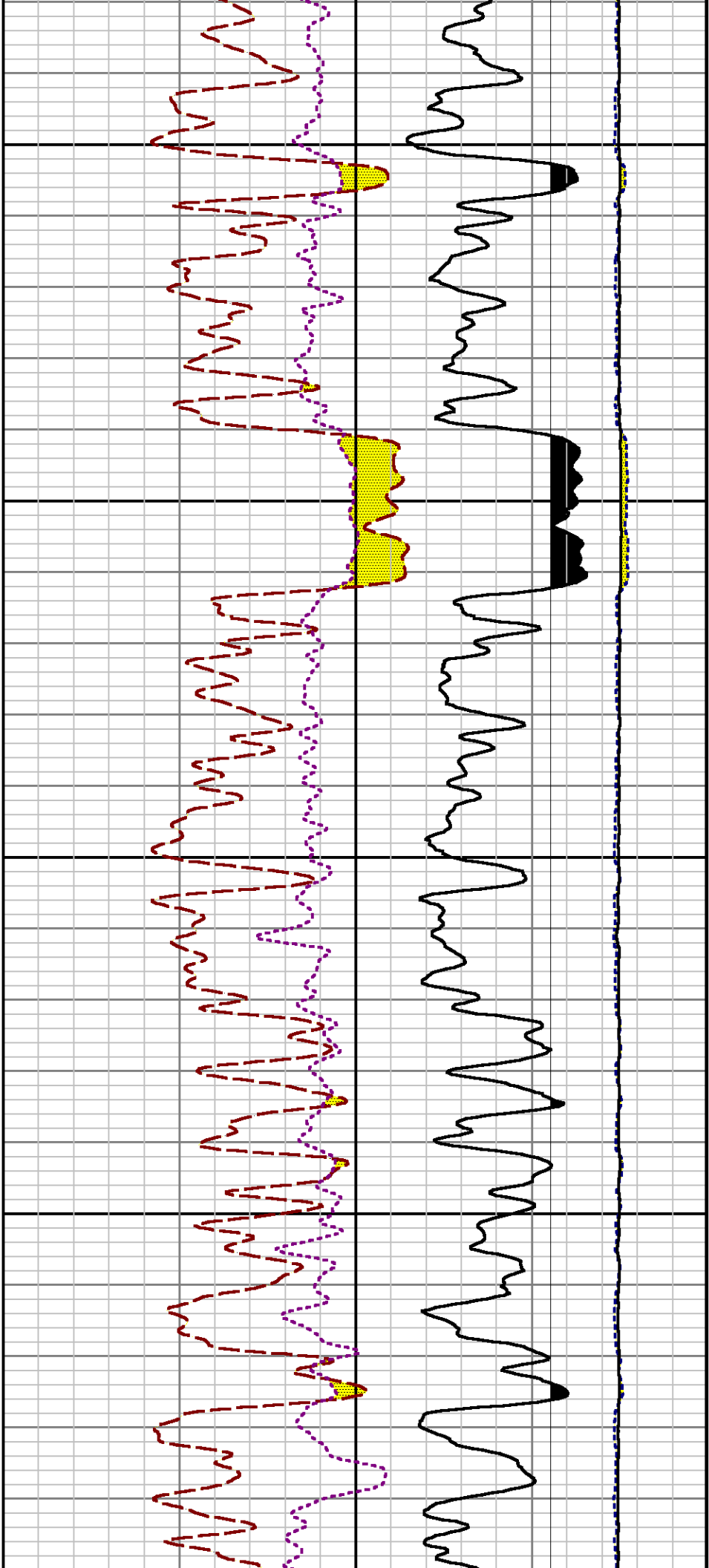
7200





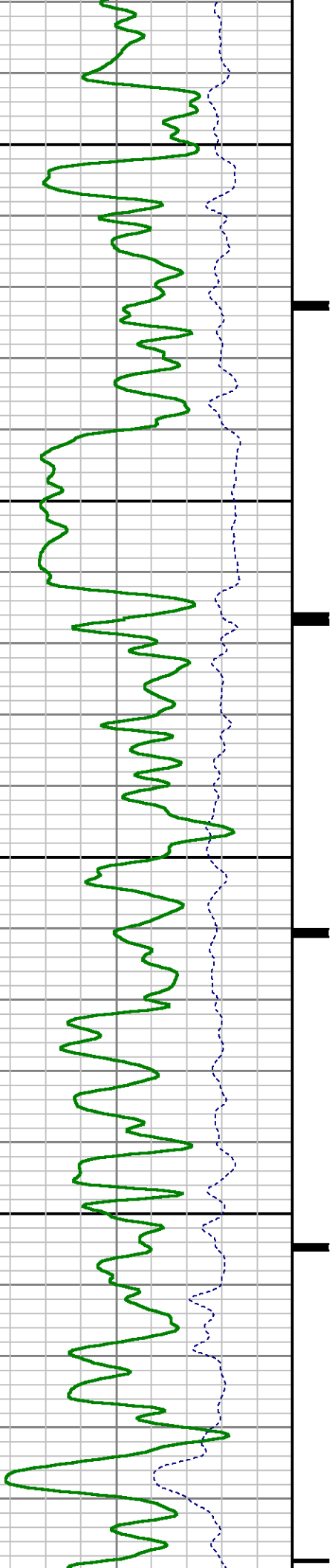


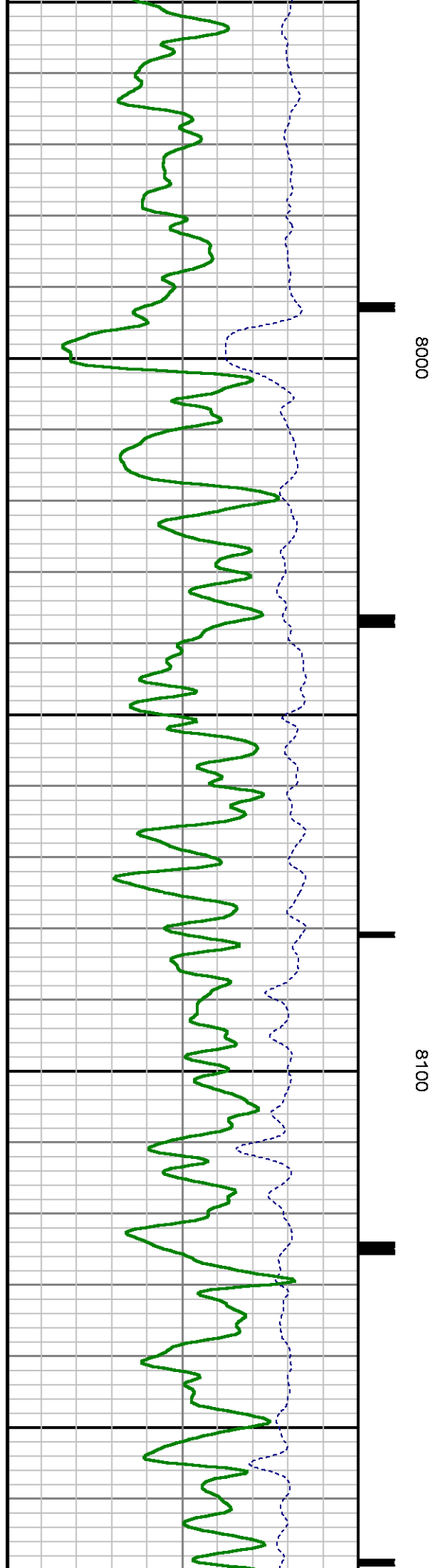
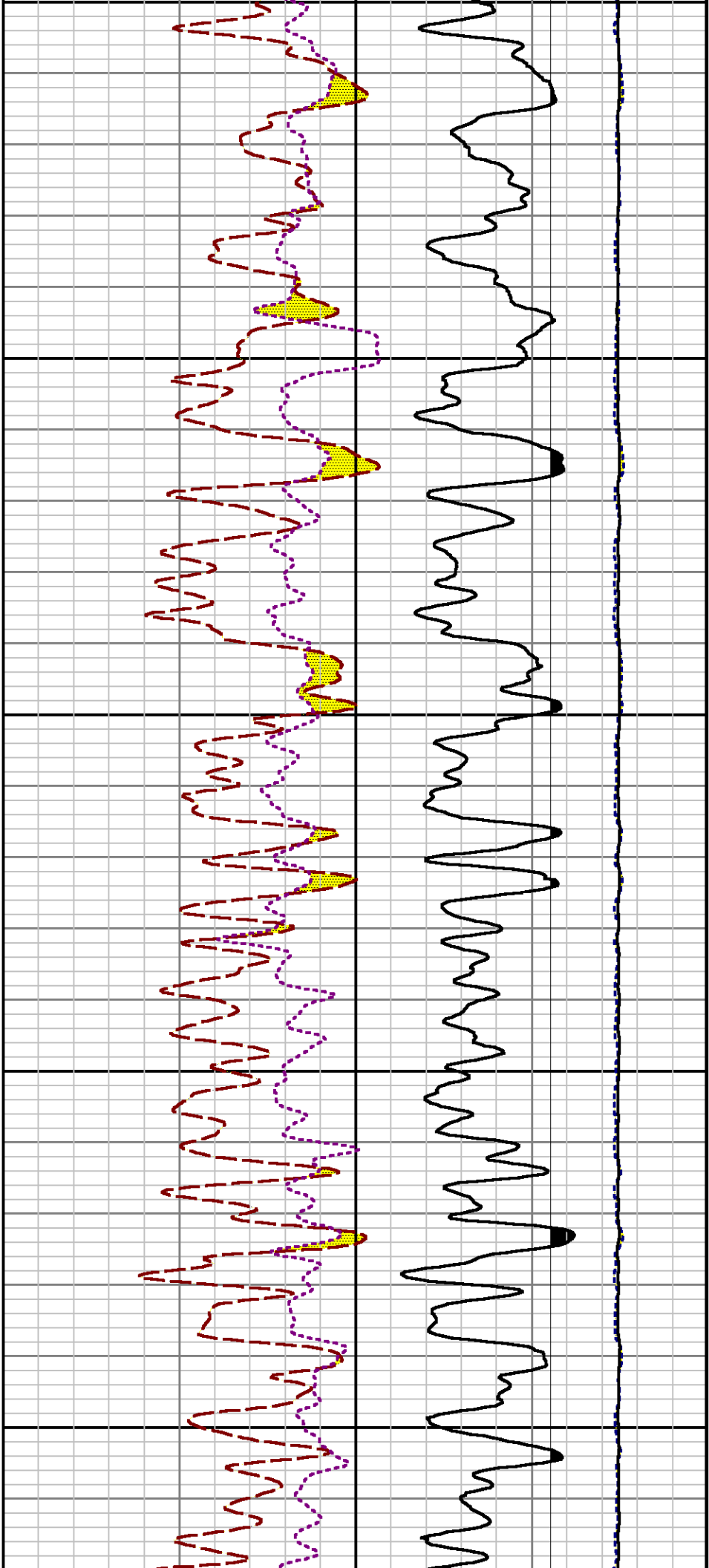


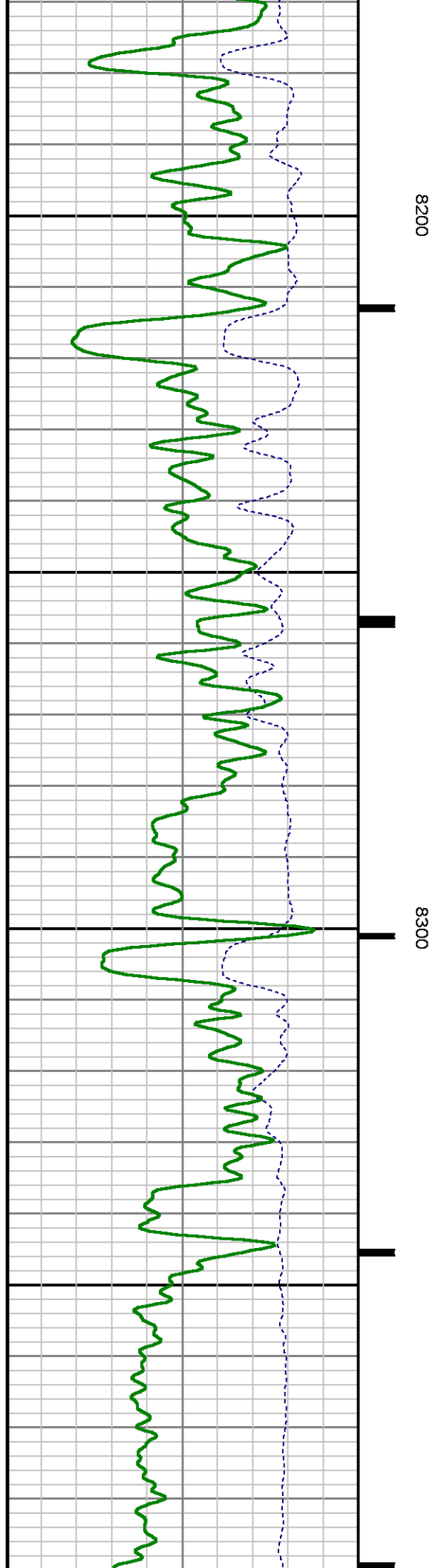
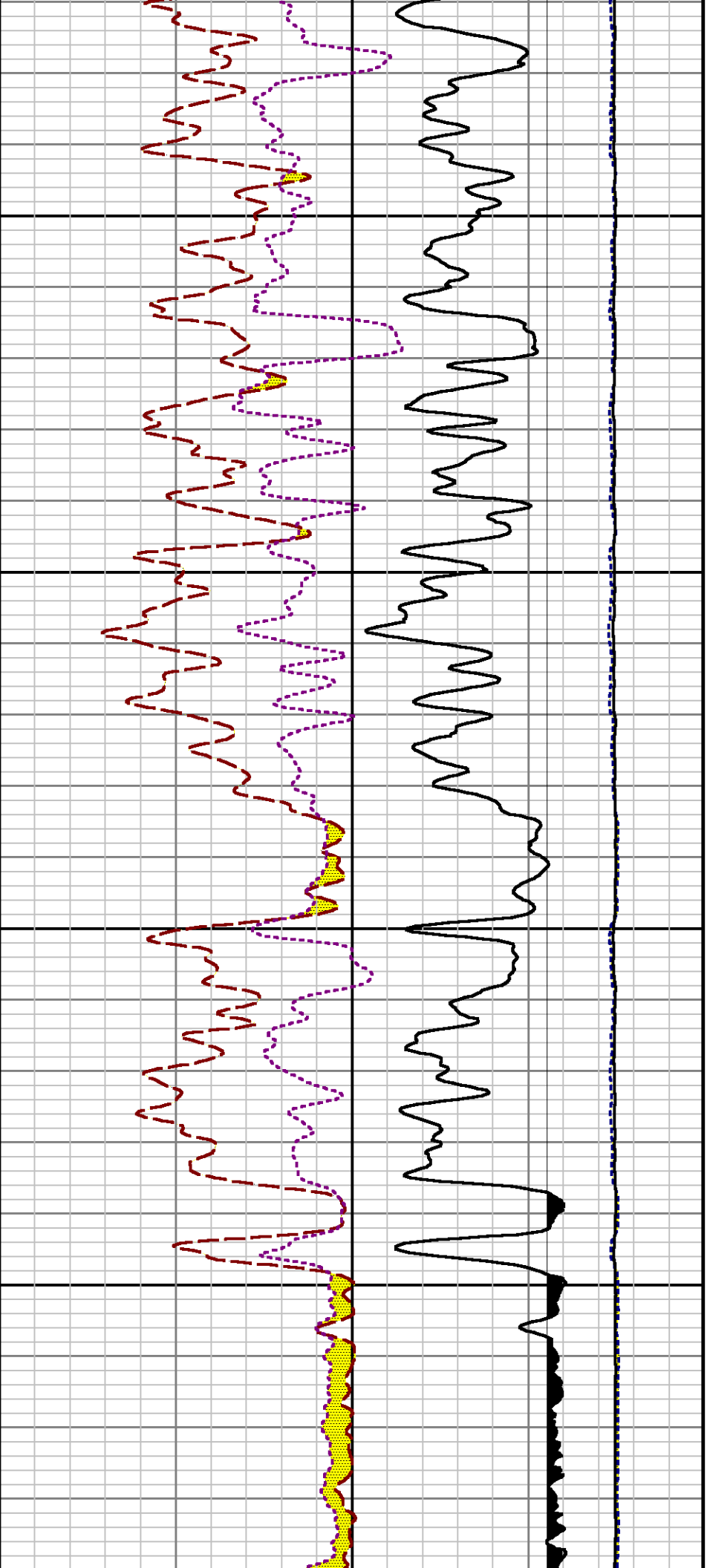


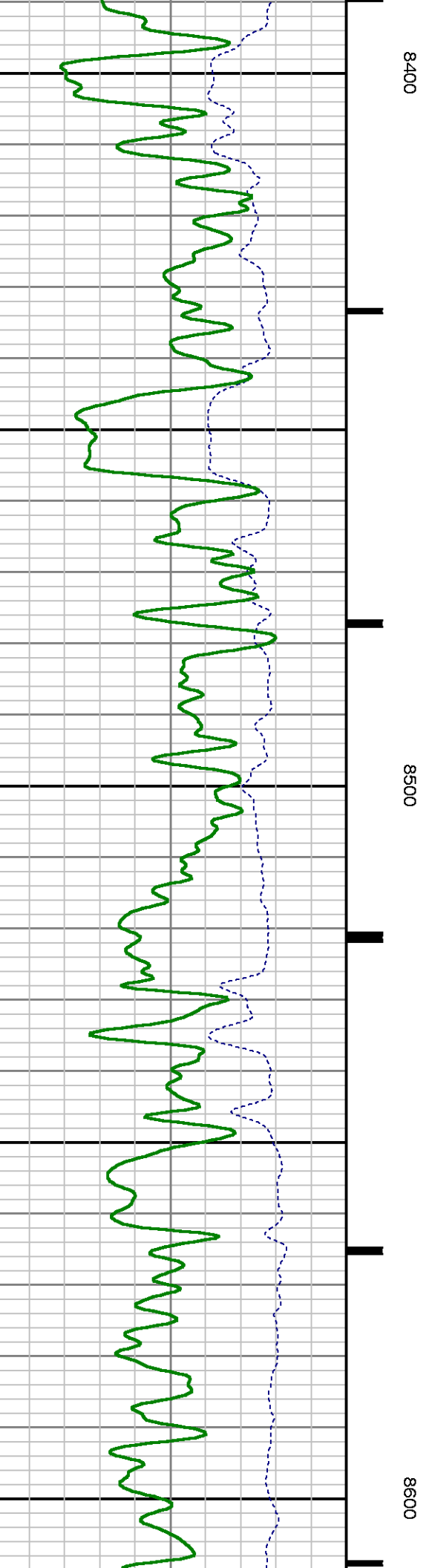
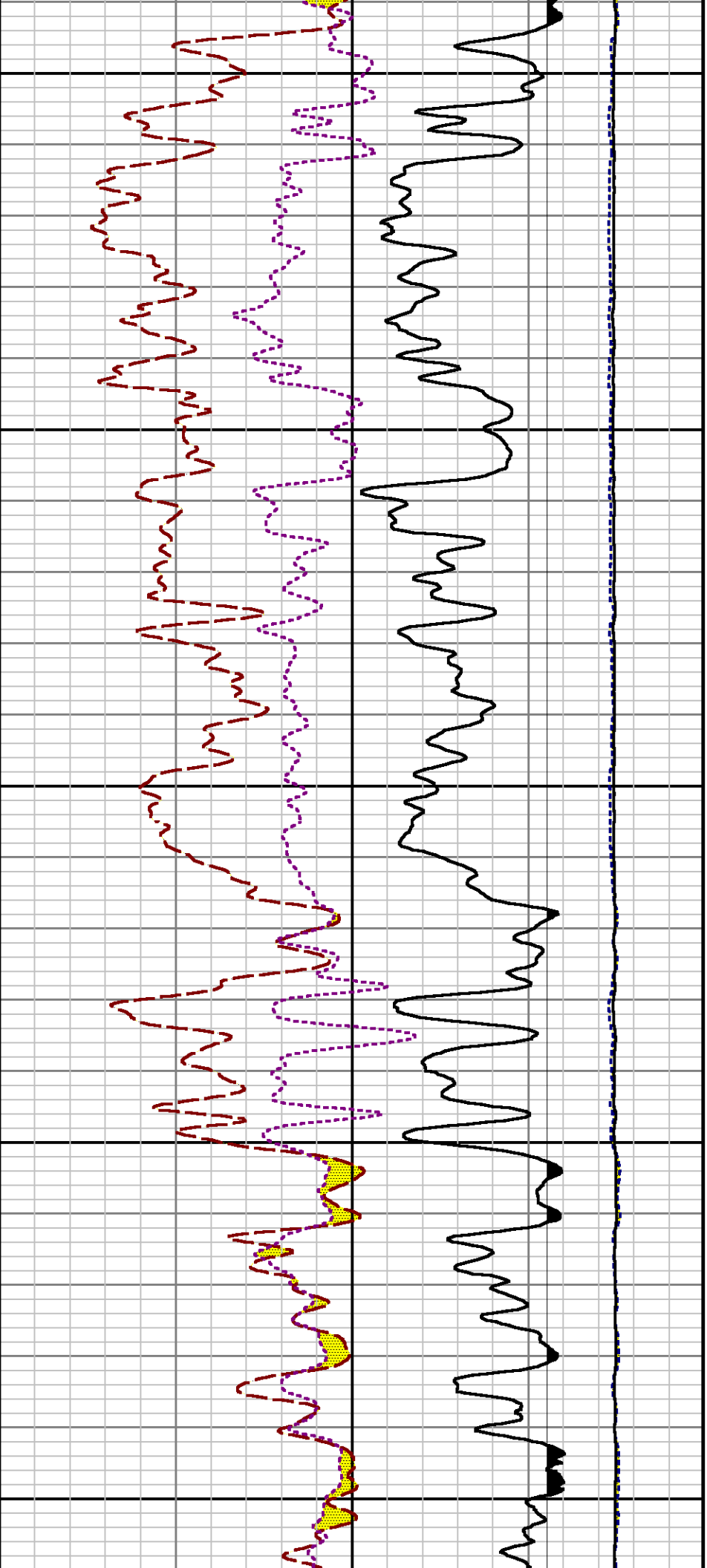
7800

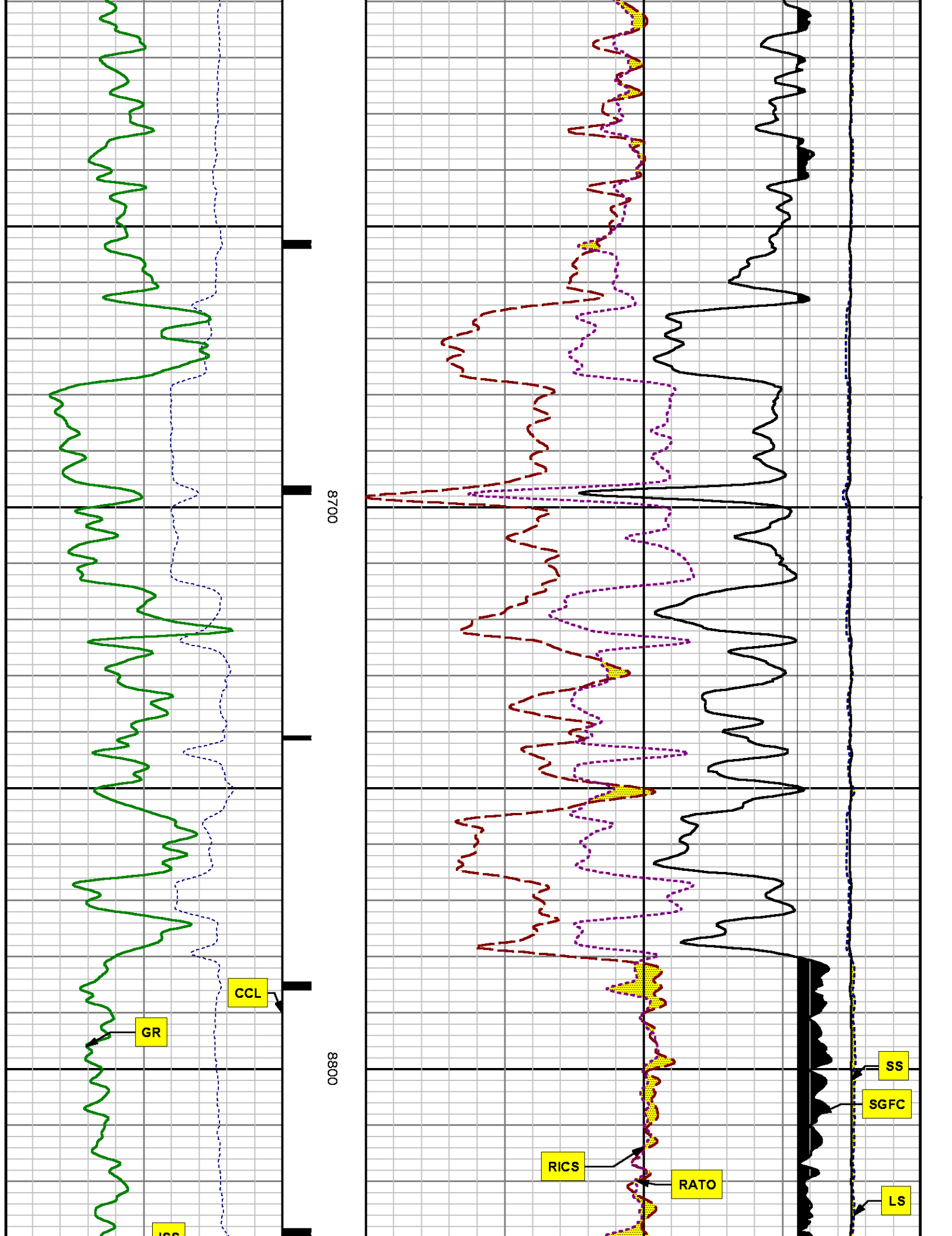
7900

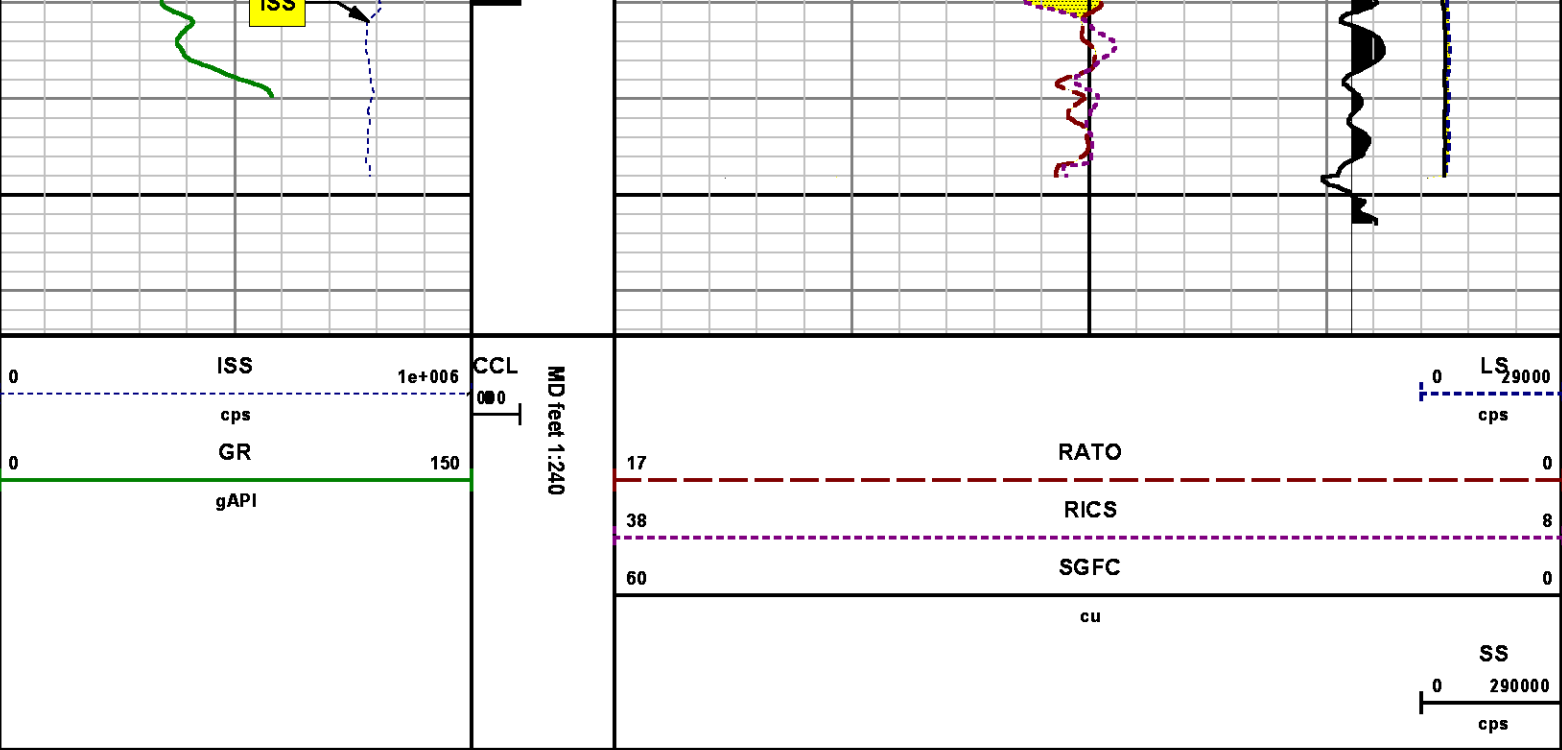












*REPEAT SECTION  
PNC 3-D MODE*

**SPL PROCESSING**

MEASUREMENT TYPE	PARAMETER	VALUE	UNITS	TOP	BOTTOM
PNC Porosity	Borehole	Cased		8033.308	8354.120
PNC Porosity	Borehole Size	8.750	inch	8033.308	8354.120
PNC Porosity	Casing Size	4.500	inch	8033.308	8354.120
PNC Porosity	Gas Filled	Non Gas Filled		8033.308	8354.120
PNC Porosity	Matrix	Sandstone		8033.308	8354.120
TPS Pressure	Temperature Corr. Source	Fixed (72.00)	degF	8033.308	8354.120

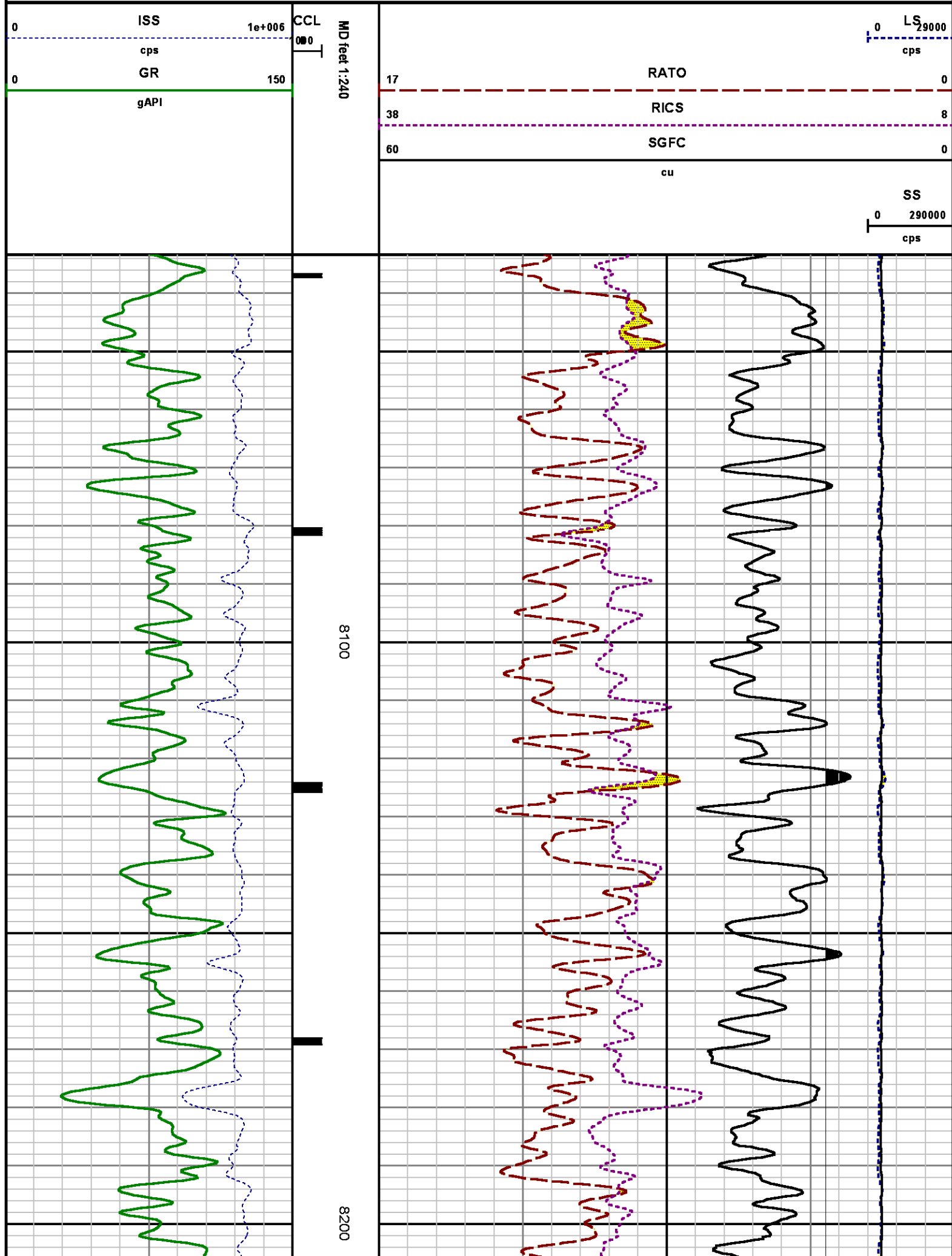
**DEPTH OFFSETS**  
(for Acquired Curves)

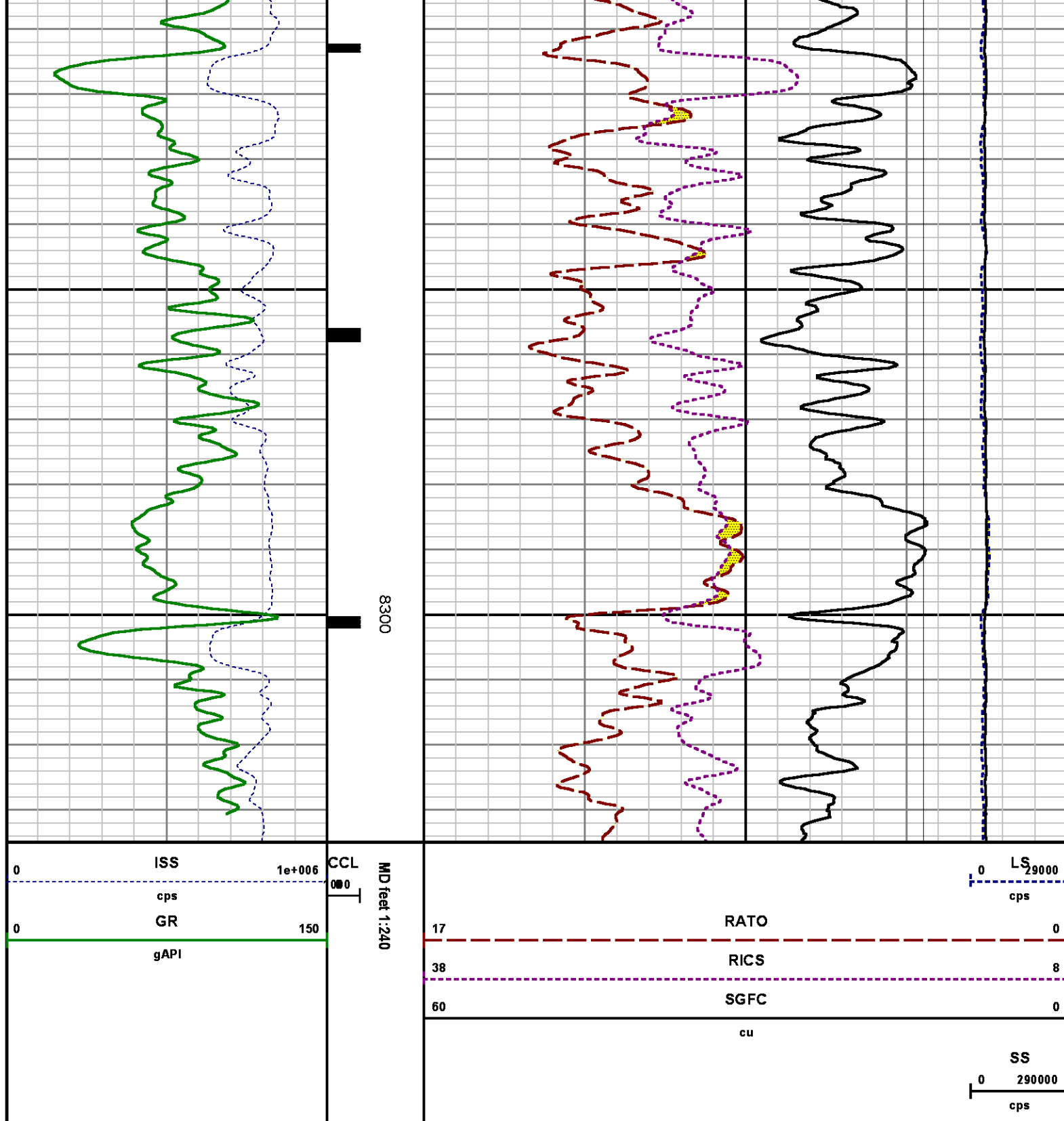
SERIES	DEPTH OFFSET	ACQUIRED CURVES
--------	--------------	-----------------

8248ED	-26.519	FLIM					
8248ED	-24.519	CCL	CHV				
2812LA	-21.969	GR					
8281XA	-12.702	HVC3Q0	SEQ3	AMA3	AML3	BKX	CXS
		CPT3Q0	CPT3Q2	CPT3Q3	CPT3Q4	ET3	IXS
		MCS3	MCS3Q0	QCAL3	RGN3	RICX	SDA3
		SDL3	SGA3	SGL3	STA3	XS	ASPEC3
		AMB3	AMF3	CHF3	IXSC	IXSN	RATO23
		RICXC	RIN13C	RIN23	RIN23C	SD3D	SG3D
		SGB3	SGF3	WDTH3	CXSR	IXSR	XSR
		RICXR					
8281XA	-12.291	HVC2Q0	SEQ2	AMA2	AMB2	AMF2	AML2
		BKL	CHF2	CLS	CPT2Q0	CPT2Q2	CPT2Q3
		CPT2Q4	ET2	ILS	LS	MCS2	MCS2Q0
		QCAL2	RGN2	RICL	RONE23	RTWO23	SDA2
		SDL2	SGA2	SGB2	SGF2	SGK2	SGL2
		STA2	ASPEC2	ILSC	ILSN	WDTH2	RICLC
		CLSR	ILSR	LSR	RICLR		
8281XA	-12.041	CPRS	HVC1Q0	MV	SEQ	SEQ1	AMA1
		AMB1	AME1	AMF1	AML1	BKS	CHF1
		CSS	CORB	CORF	CPT1Q0	CPT1Q2	CPT1Q2A
		CPT1Q2B	CPT1Q2C	CPT1Q3	CPT1Q4	CPT1Q5	ET1
		G1	G2	GE1S	GE2S	ISS	MCS1
		MCS1Q0	QA1	QCAL1	QM1	RATO	RATO13
		RBOR	RGN1	RICS	RIN	RONE	RPOR
		RTWO	RIN13	RONE13	RTWO13	SALB	SC1
		SDA1	SDL1	SGA1	SGB1	SGBC	SGE1
		SGF1	SGFC	SGK1	SGL1	SS	SS2
		STA1	PD1S	PD2S	PD3S	MD1S	MD2S
		MD3S	DG1S	DG2S	DG3S	PD1M	PD2M
		PD3M	MD1M	MD2M	MD3M	DG1M	DG2M
		DG3M	MVS	MA	MVM	FILV	IAM
		TA	PVM	PVS	IAS	SSTAT	QPD1
		QPD2	QPD3	QMD1	QMD2	QMD3	QDG1
		QDG2	QDG3	QMA	QTA	QFILV	QMV
		QPV	QIA	DERR	DCNT	QPK1	QSA1
		PKS1	ASPEC1	H0C	FE2XC	ISSC	RINC
		ISSN	RDEN	WDTH1	RICSC	CSSR	G1R
		G2R	ISSR	SSR	SS2R	RATOR	RATO13R
		RBORR	RICSR	RINR	RIN13R	RONER	RPORR
		RTWOR					
8255XA	-0.792	PTFS	PTMS				
8255XA	-0.775	SPF1	SPFQ	TSCP	TSDP		
8255XA	0.000	DTEM	TEMP	TNF			
SYSTEM	0.000	TEN	TTEN				

Created by : RPM9, v5.3.1.0







CALIBRATION SUMMARY

GAMMA RAY

# GAMMA RAY

Calibration File: C:\case\calver\GR\382A1.cal

## CALIBRATION SUMMARY

DATE/TIME PERFORMED: Sun Aug 17 18:00:30 2014 TOOL SERIES: 2812LA ASSET: 382 SEQ: A1

Calibrator #	Background [cps]	Calibrator On [cps]	Multiplicative	Background [api]	Calibrator On [api]	Differential [api]
SK2 WA612	42.82	251.20	1.008	43.16	253.16	210.00

Verification File: C:\case\calver\GR\382A1.VP

## PRIMARY VERIFICATION

DATE/TIME PERFORMED: Sun Aug 17 18:03:34 2014 TOOL SERIES: 2812LA ASSET: 382 SEQ: A1

Calibrator #	Background [cps]	Calibrator On [cps]	Multiplicative	Background [api]	Calibrator On [api]	Differential [api]
SK2 WA612	44.24	248.18	1.008	44.59	250.11	205.52

# PNC

Calibration File: C:\case\calver\PNC\345A1.cal

## PNC 3D CALIBRATION SUMMARY

DATE/TIME PERFORMED: Thu Apr 11 13:13:27 2013 TOOL SERIES: 8281XA ASSET: 345 SEQ: A1

Calibrator #

GJ SHOP

Source #

8281AA 10148476

	ISS	Mtr Vits (V)	SS Gain	LS Gain	XLS Gain	EA Temp (degF)	Sync Delay (usec)	RCAL
Raw Data	819781	120.00	2266.00	2256.00	2263.00	104.57	7.00	1.0020
Interpolated	1300000	139.82	2252.58	2250.54	2259.49			

	ISS	BKS	BKL	BKX	SGA1	SDA1	SGA2	SDA2
Raw Data	819781	6413.62	1027.31	151.47	25.81	0.14	24.20	0.27
					25.35 26.40	0.00 0.20	23.60 24.80	0.00 0.40

	ISS	ILS	IXS	SS	SS2	LS	CSS	CLS
Raw Data	819781	177449.06	27584.03	91479.44	32556.03	8662.85	55318.64	13870.90
Fit Quality %		0.39	0.29	0.47	0.44	0.44	0.43	0.48

	ISS	RBOR	RIN ISS/ILS	RIN13 ISS/IXS	RICS ISS/CSS	RATO SS/LS	RTWO SS2/LS	RONE CSS/CLS
Raw Data	819781	1.43	4.62	29.72	14.82	10.56	3.76	3.99

Raw Data

Fit Quality %

Reduced

	1.43	4.02		29.72		14.02		10.30		3.70		3.99		
	1.42	1.45	3.55	5.52	22.20	32.70	10.99	16.34	10.06	11.10	3.57	3.95	3.76	4.22
	0.02		0.51		0.50		0.48		0.16		0.15		0.14	
	1.43		4.65		29.85		14.91		10.55		3.75		3.99	
	1.42	1.45	4.33	5.52	27.60	32.70	13.70	16.34	10.06	11.10	3.57	3.95	3.76	4.22

## TEMPERATURE

Calibration File: C:\case\calver\TEMP\120516AU.cal

### CALIBRATION SUMMARY

DATE/TIME PERFORMED: 09 AUG 2010

TOOL SERIES: 8255XA ASSET: 120516 SEQ: AU

	T(0)	T(1)	T(2)	T(3)	T(4)	T(5)
Coefficients	-8.673169e+000	9.576065e-002	6.395448e-006	-9.461013e-010	0.000000e+000	0.000000e+000

## TOOL DIAGRAM

### OTA SHORT CABLE HEAD

#### PCM POWER SUPPLY

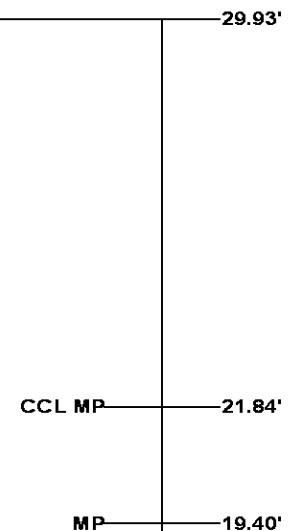
Series 8250EA  
 Mnemonic PCM  
 Diameter 1.70"  
 Weight 18.00 lb  
 Length 3.86'  
 Temp Rating 350.00 °F

#### TELEMETRY / CCL

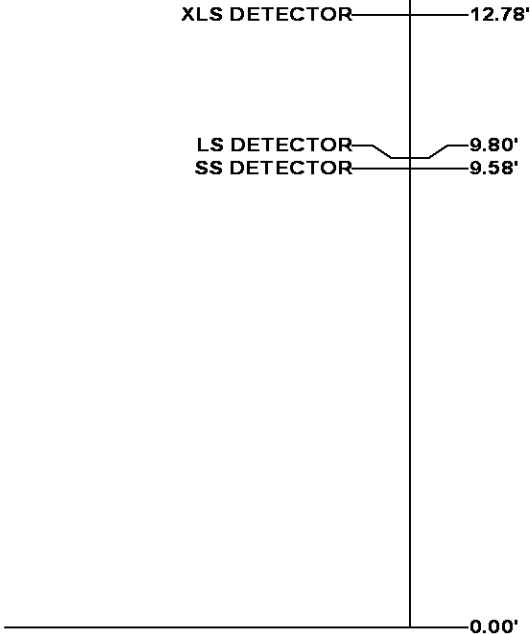
Series 8248EA  
 Mnemonic PCM  
 Diameter 1.70"  
 Weight 20.00 lb  
 Length 4.46'  
 Measure Point 1.00' CCL MP  
 Temp Rating 350.00 °F  
 Press Rating 15000.00 PSI

#### SONDEX GAMMA RAY



Series 2812LA  
 Mnemonic SNDX  
 Diameter 1.69"



RESERVOIR PERFORMANCE MONITOR	
Series	8281XA
Mnemonic	RPM
Diameter	1.70"
Weight	75.00 lb
Length	18.58'
Measure Point	9.49' SS DETECTOR
Measure Point	9.72' LS DETECTOR
Measure Point	12.69' XLS DETECTOR
Temp Rating	350.00 °F
Press Rating	20000.00 PSI



**Total Length: 29.93'**  
**Total Weight: Not Available**  
**Max Diameter: 0' 1.70"**

<div> <b>BAKER HUGHES</b></div> <div>Baker Atlas</div> <div></div>	<div>Company</div> <div>Well</div> <div>Field</div> <div>County</div>	<div>WPX ENERGY</div> <div>SAVAGE RWF 334-25</div> <div>RULISON</div> <div>GARFIELD</div>	<div>State</div> <div>COLORADO</div>	<div>File No:</div> <div>CH089883</div> <div>API No:</div> <div>05045219960000</div>	
	<div>Location</div> <div>SHL: 1147' FSL &amp; 1391' FEL</div> <div>BHL: 1428' FSL &amp; 2632' FWL (NWSE)</div>			<div>Elevations</div> <div>KB 6260 ft</div> <div>DF</div> <div>GL 6234 ft</div>	<div>25 6S 94W</div> <div>RWF 43-25 PAD</div> <div>NABORS 577</div>
	<div>SEC 25</div> <div>TWP 6S</div> <div>RGE 94S</div>				