

OPERATOR: **WPX ENERGY**

WELL NAME: RWF 44-25

FIELD NAME: RULISON

DRILLING RIG: NABORS 577

API #: 05-045-22003

LOCATION: SEC. 25 T 6S R 94W

SURFACE HOLE: 1155' FSL , 1381' FEL

BOTTOM HOLE: 1257' FSL , 566' FEL

SCALE: 1"=100'



533 Bogart Lane, Unit A
Grand Junction, CO 81505
Office (970) 424-5162

RWF 44-25

COUNTY: GARFIELD

STATE: COLORADO

DRILLING FLUID: LSND

LOGGER: LUKE DAVENPORT

GROUND ELEVATION: 6234'

KELLY BUSHING: 6260'

TVD VS. MD = -64'

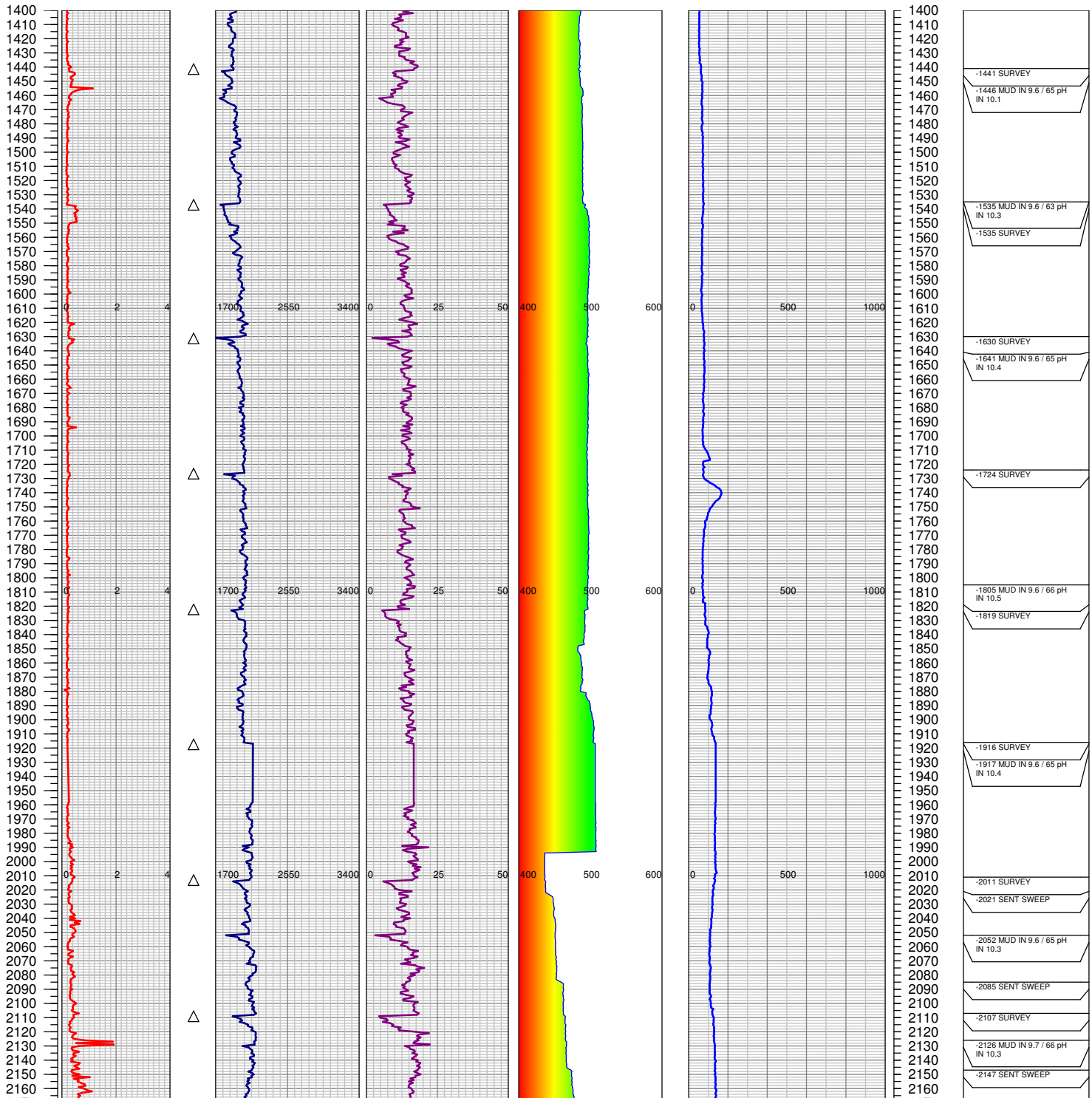
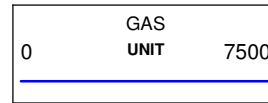
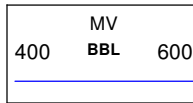
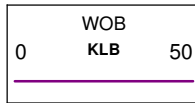
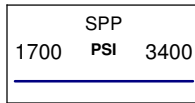
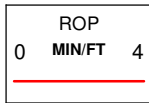
DEPTHS LOGGED: 1400'-8900'

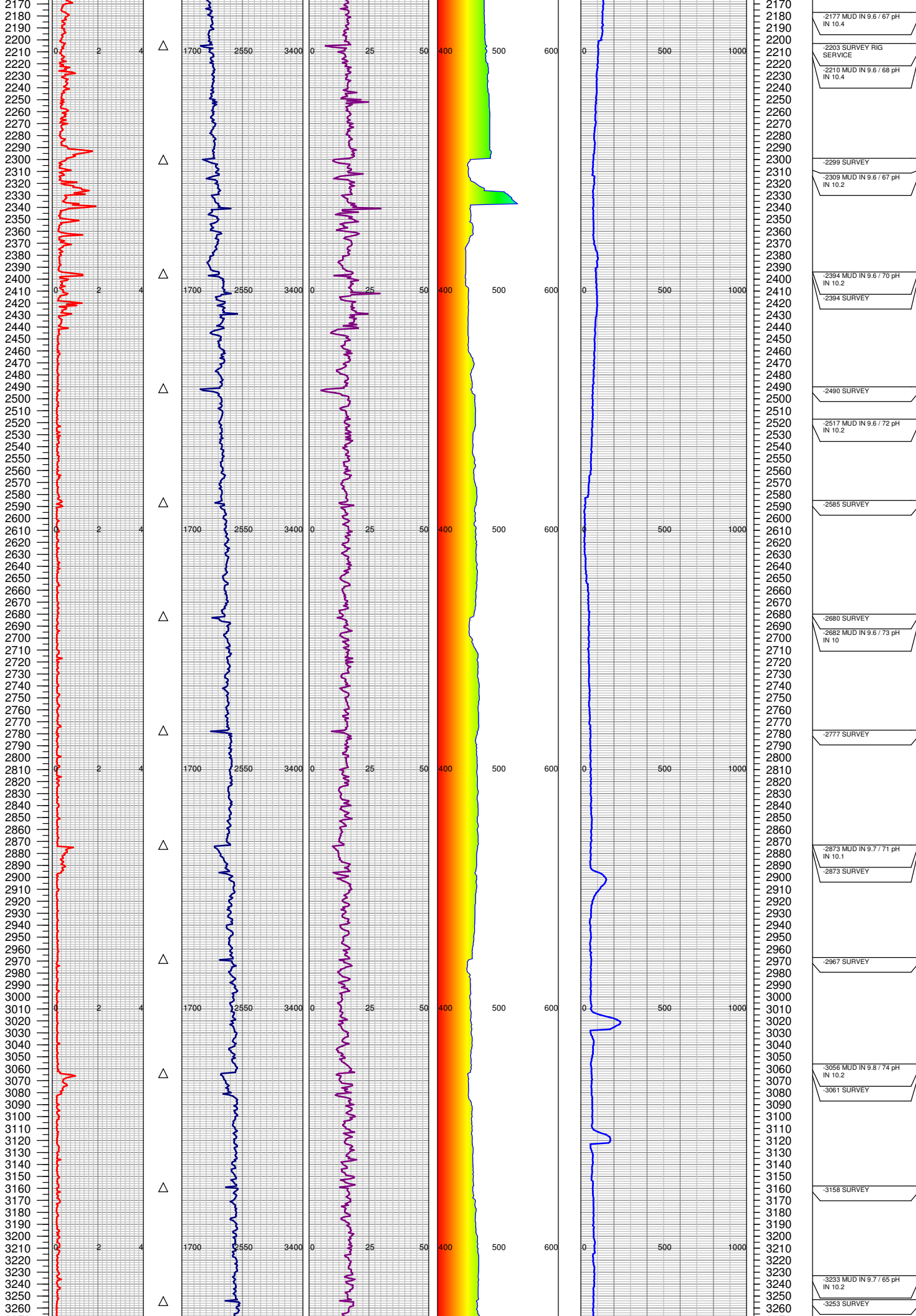
SPUD DATE: 7/15/2014

FGS BEGIN LOGGING: 7/17/2014

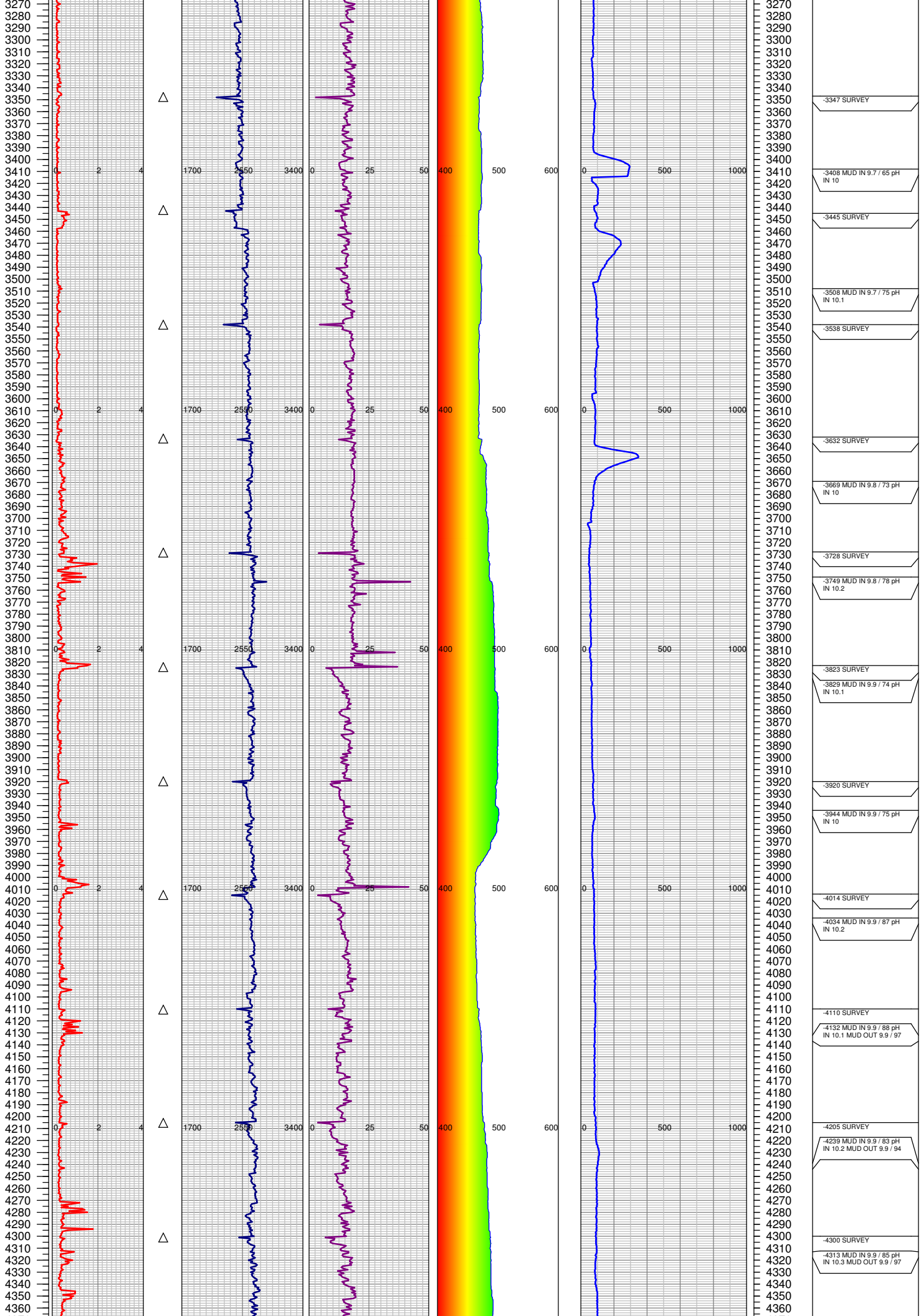
TD DATE: 7/23/2014

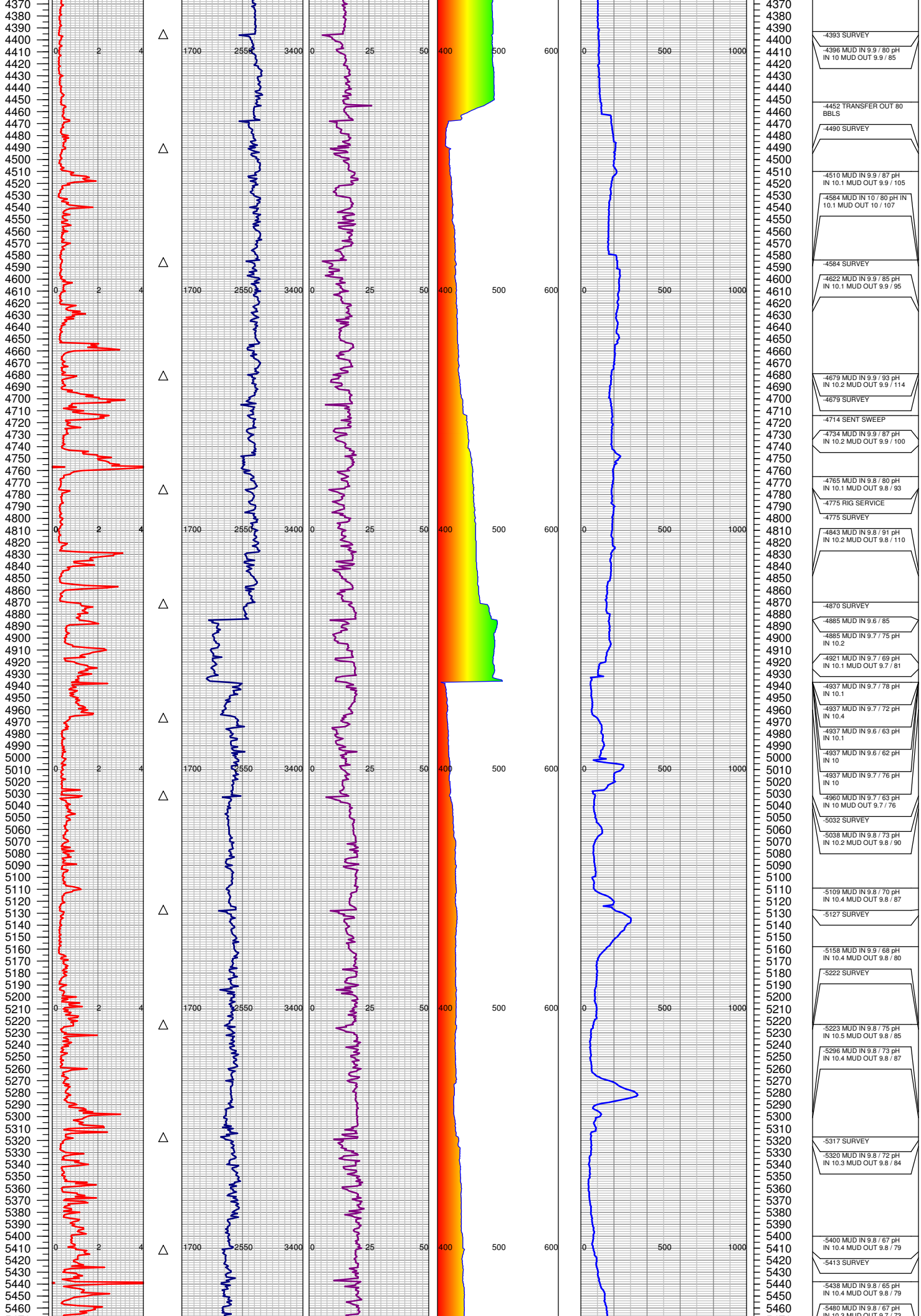
DATES LOGGED: 7/17/2014-7/23/2014



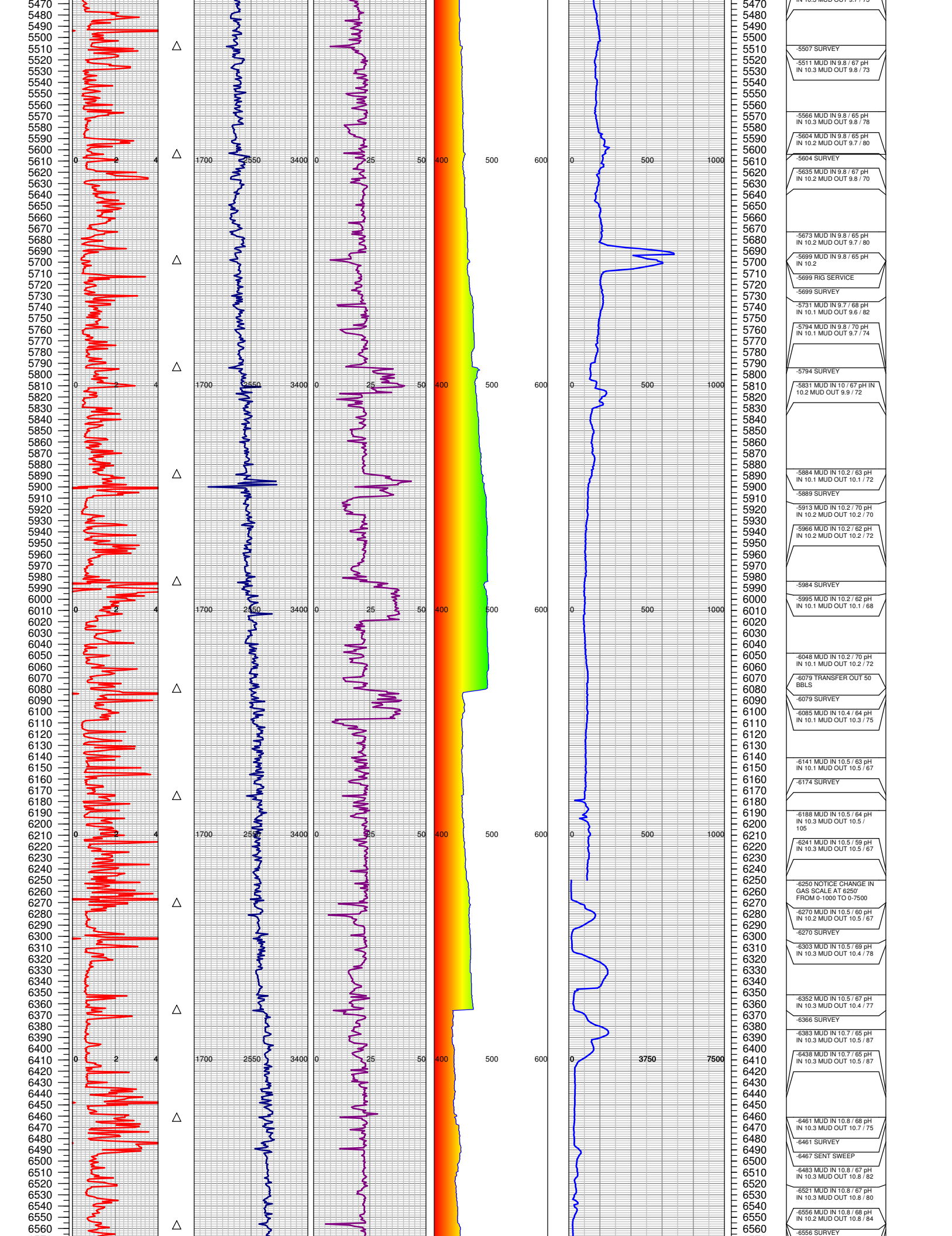


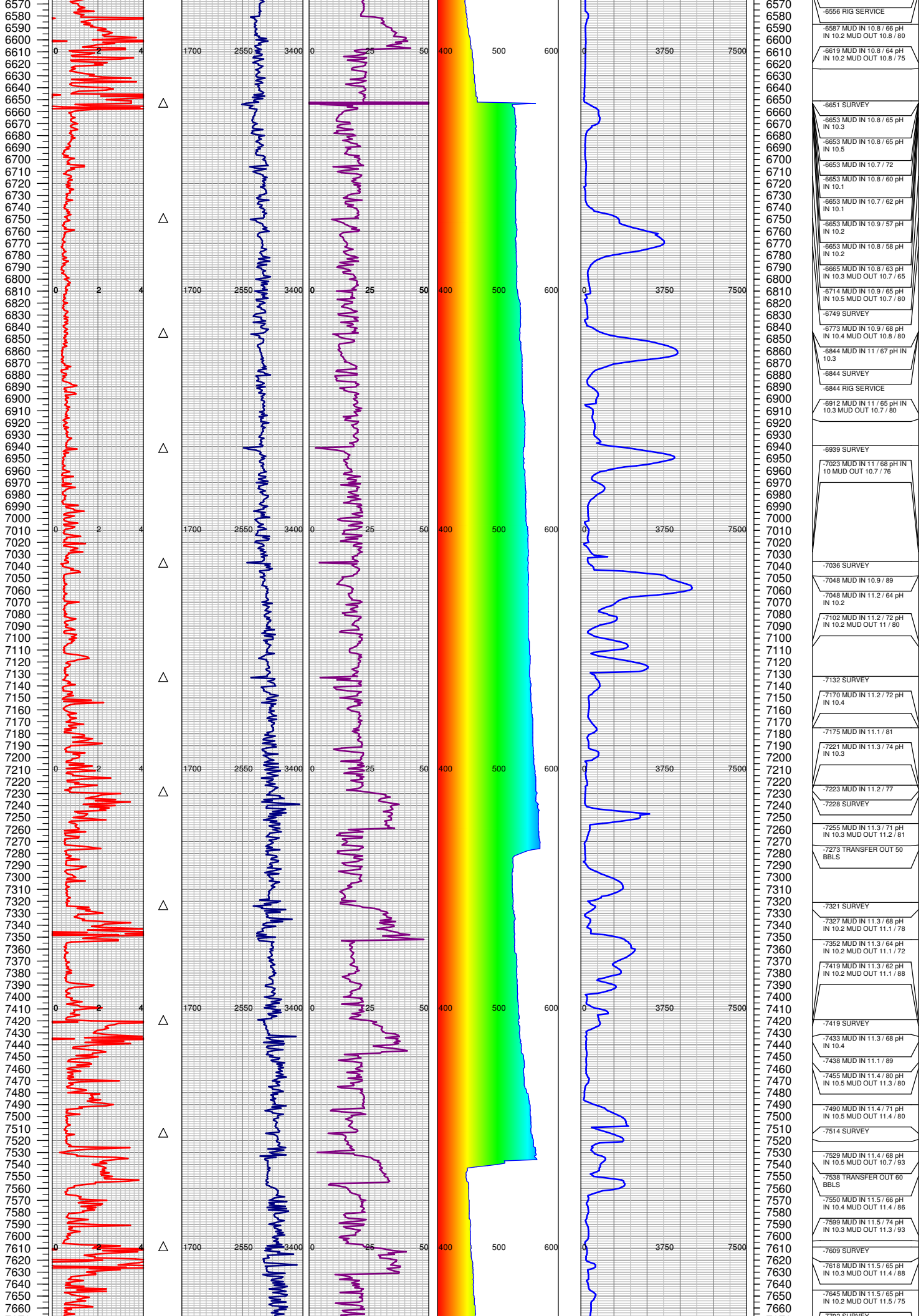
2170	-2177 MUD IN 9.6 / 67 pH IN 10.4
2180	
2190	
2200	-2203 SURVEY RIG SERVICE
2210	
2220	-2210 MUD IN 9.6 / 68 pH IN 10.4
2230	
2240	
2250	
2260	
2270	
2280	
2290	
2300	-2299 SURVEY
2310	
2320	-2309 MUD IN 9.6 / 67 pH IN 10.2
2330	
2340	
2350	
2360	
2370	
2380	
2390	
2400	-2394 MUD IN 9.6 / 70 pH IN 10.2
2410	
2420	-2394 SURVEY
2430	
2440	
2450	
2460	
2470	
2480	
2490	-2490 SURVEY
2500	
2510	
2520	-2517 MUD IN 9.6 / 72 pH IN 10.2
2530	
2540	
2550	
2560	
2570	
2580	
2590	-2585 SURVEY
2600	
2610	
2620	
2630	
2640	
2650	
2660	
2670	
2680	-2680 SURVEY
2690	
2700	-2682 MUD IN 9.6 / 73 pH IN 10
2710	
2720	
2730	
2740	
2750	
2760	
2770	
2780	-2777 SURVEY
2790	
2800	
2810	
2820	
2830	
2840	
2850	
2860	
2870	
2880	-2873 MUD IN 9.7 / 71 pH IN 10.1
2890	
2900	-2873 SURVEY
2910	
2920	
2930	
2940	
2950	
2960	
2970	-2967 SURVEY
2980	
2990	
3000	
3010	
3020	
3030	
3040	
3050	
3060	-3056 MUD IN 9.8 / 74 pH IN 10.2
3070	
3080	-3061 SURVEY
3090	
3100	
3110	
3120	
3130	
3140	
3150	
3160	-3158 SURVEY
3170	
3180	
3190	
3200	
3210	
3220	
3230	
3240	-3233 MUD IN 9.7 / 65 pH IN 10.2
3250	
3260	-3253 SURVEY



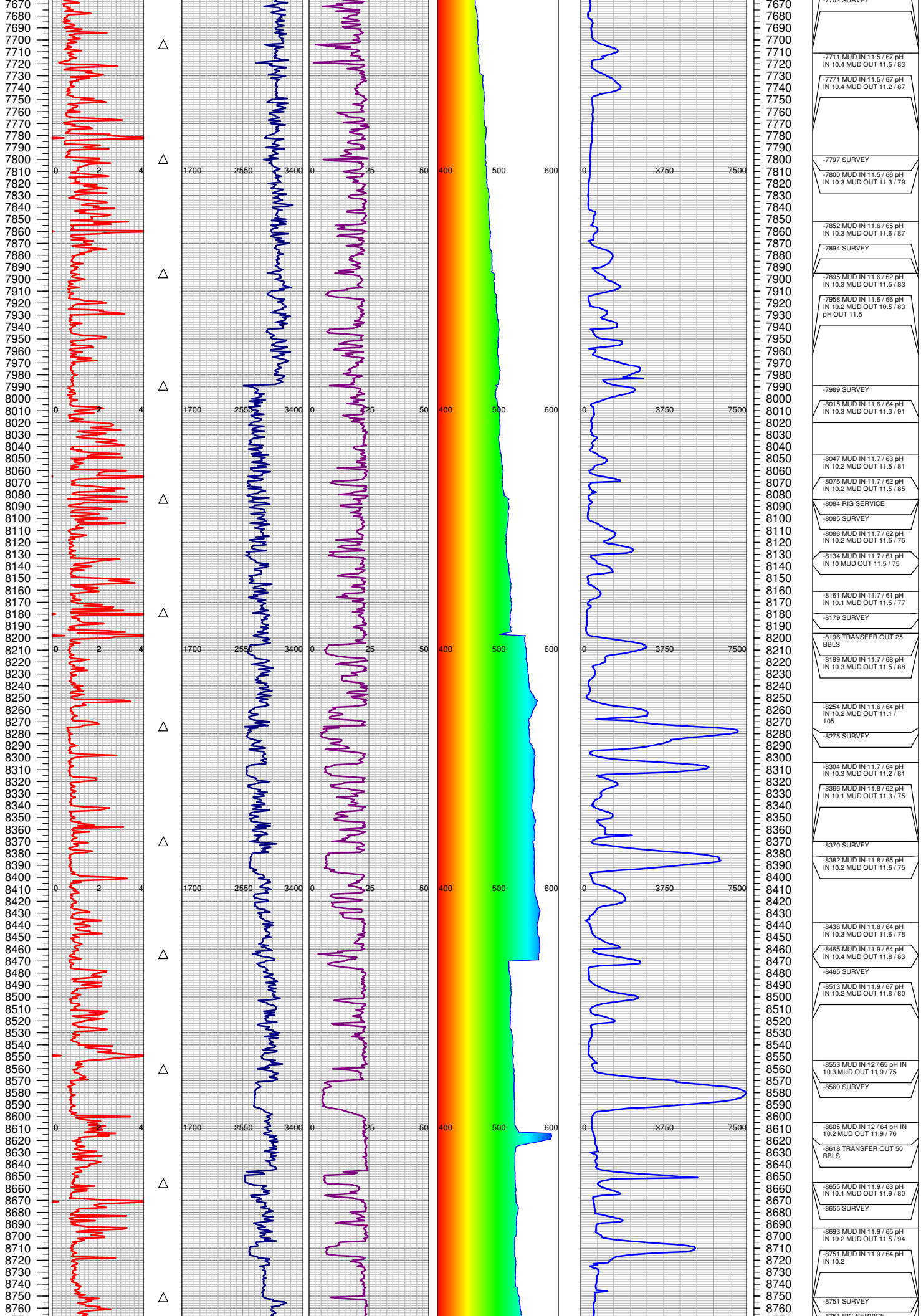


4370	-4393 SURVEY
4380	-4396 MUD IN 9.9 / 80 pH IN 10 MUD OUT 9.9 / 85
4390	
4400	
4410	
4420	
4430	
4440	
4450	-4452 TRANSFER OUT 80 BBLs
4460	
4470	-4490 SURVEY
4480	
4490	
4500	
4510	-4510 MUD IN 9.9 / 87 pH IN 10.1 MUD OUT 9.9 / 105
4520	
4530	-4584 MUD IN 10 / 80 pH IN 10.1 MUD OUT 10 / 107
4540	
4550	
4560	
4570	
4580	-4584 SURVEY
4590	
4600	-4622 MUD IN 9.9 / 85 pH IN 10.1 MUD OUT 9.9 / 95
4610	
4620	
4630	
4640	
4650	
4660	
4670	
4680	-4679 MUD IN 9.9 / 93 pH IN 10.2 MUD OUT 9.9 / 114
4690	
4700	-4679 SURVEY
4710	
4720	-4714 SENT SWEEP
4730	-4734 MUD IN 9.9 / 87 pH IN 10.2 MUD OUT 9.9 / 100
4740	
4750	
4760	
4770	-4765 MUD IN 9.8 / 80 pH IN 10.1 MUD OUT 9.8 / 93
4780	
4790	-4775 RIG SERVICE
4800	-4775 SURVEY
4810	
4820	-4843 MUD IN 9.9 / 91 pH IN 10.2 MUD OUT 9.8 / 110
4830	
4840	
4850	
4860	
4870	-4870 SURVEY
4880	
4890	-4885 MUD IN 9.6 / 85
4900	-4885 MUD IN 9.7 / 75 pH IN 10.2
4910	
4920	-4921 MUD IN 9.7 / 69 pH IN 10.1 MUD OUT 9.7 / 81
4930	
4940	-4937 MUD IN 9.7 / 78 pH IN 10.1
4950	-4937 MUD IN 9.7 / 72 pH IN 10.4
4960	-4937 MUD IN 9.6 / 63 pH IN 10.1
4970	-4937 MUD IN 9.6 / 62 pH IN 10
4980	-4937 MUD IN 9.7 / 76 pH IN 10
4990	
5000	-5032 SURVEY
5010	
5020	-5038 MUD IN 9.8 / 73 pH IN 10.2 MUD OUT 9.8 / 90
5030	
5040	
5050	
5060	
5070	
5080	
5090	
5100	
5110	-5109 MUD IN 9.8 / 70 pH IN 10.4 MUD OUT 9.8 / 87
5120	
5130	-5127 SURVEY
5140	
5150	
5160	-5158 MUD IN 9.9 / 68 pH IN 10.4 MUD OUT 9.8 / 80
5170	
5180	-5222 SURVEY
5190	
5200	
5210	
5220	-5223 MUD IN 9.8 / 75 pH IN 10.5 MUD OUT 9.8 / 85
5230	
5240	-5296 MUD IN 9.8 / 73 pH IN 10.4 MUD OUT 9.8 / 87
5250	
5260	
5270	
5280	
5290	
5300	
5310	
5320	-5317 SURVEY
5330	-5320 MUD IN 9.8 / 72 pH IN 10.3 MUD OUT 9.8 / 84
5340	
5350	
5360	
5370	
5380	
5390	
5400	-5400 MUD IN 9.8 / 67 pH IN 10.4 MUD OUT 9.8 / 79
5410	
5420	-5413 SURVEY
5430	
5440	-5438 MUD IN 9.8 / 65 pH IN 10.4 MUD OUT 9.8 / 79
5450	
5460	-5480 MUD IN 9.8 / 67 pH IN 10.3 MUD OUT 9.7 / 79





6570	-6556 RIG SERVICE
6580	-6587 MUD IN 10.8 / 66 pH IN 10.2 MUD OUT 10.8 / 80
6590	-6519 MUD IN 10.8 / 64 pH IN 10.2 MUD OUT 10.8 / 75
6600	
6610	
6620	
6630	
6640	
6650	-6651 SURVEY
6660	-6653 MUD IN 10.8 / 65 pH IN 10.3
6670	-6653 MUD IN 10.8 / 65 pH IN 10.5
6680	-6653 MUD IN 10.7 / 72
6690	-6653 MUD IN 10.8 / 60 pH IN 10.1
6700	-6653 MUD IN 10.7 / 62 pH IN 10.1
6710	-6653 MUD IN 10.9 / 57 pH IN 10.2
6720	-6653 MUD IN 10.8 / 58 pH IN 10.2
6730	-6665 MUD IN 10.8 / 63 pH IN 10.3 MUD OUT 10.7 / 65
6740	-6714 MUD IN 10.9 / 65 pH IN 10.5 MUD OUT 10.7 / 80
6750	-6749 SURVEY
6760	-6773 MUD IN 10.9 / 68 pH IN 10.4 MUD OUT 10.8 / 80
6770	-6844 MUD IN 11 / 67 pH IN 10.3
6780	-6844 SURVEY
6790	-6844 RIG SERVICE
6800	-6912 MUD IN 11 / 65 pH IN 10.3 MUD OUT 10.7 / 80
6810	
6820	-6939 SURVEY
6830	-7023 MUD IN 11 / 68 pH IN 10 MUD OUT 10.7 / 76
6840	
6850	-7036 SURVEY
6860	-7048 MUD IN 10.9 / 89
6870	-7048 MUD IN 11.2 / 64 pH IN 10.2
6880	-7102 MUD IN 11.2 / 72 pH IN 10.2 MUD OUT 11 / 80
6890	
6900	-7132 SURVEY
6910	-7170 MUD IN 11.2 / 72 pH IN 10.4
6920	-7175 MUD IN 11.1 / 81
6930	-7221 MUD IN 11.3 / 74 pH IN 10.3
6940	-7223 MUD IN 11.2 / 77
6950	-7228 SURVEY
6960	-7255 MUD IN 11.3 / 71 pH IN 10.3 MUD OUT 11.2 / 81
6970	-7273 TRANSFER OUT 50 BBLs
6980	
6990	-7321 SURVEY
7000	-7327 MUD IN 11.3 / 68 pH IN 10.2 MUD OUT 11.1 / 78
7010	-7352 MUD IN 11.3 / 64 pH IN 10.2 MUD OUT 11.1 / 72
7020	-7419 MUD IN 11.3 / 62 pH IN 10.2 MUD OUT 11.1 / 88
7030	-7419 SURVEY
7040	-7433 MUD IN 11.3 / 68 pH IN 10.4
7050	-7438 MUD IN 11.1 / 89
7060	-7455 MUD IN 11.4 / 80 pH IN 10.5 MUD OUT 11.3 / 80
7070	-7490 MUD IN 11.4 / 71 pH IN 10.5 MUD OUT 11.4 / 80
7080	-7514 SURVEY
7090	-7529 MUD IN 11.4 / 68 pH IN 10.5 MUD OUT 10.7 / 93
7100	-7536 TRANSFER OUT 60 BBLs
7110	-7550 MUD IN 11.5 / 66 pH IN 10.4 MUD OUT 11.4 / 86
7120	-7599 MUD IN 11.5 / 74 pH IN 10.3 MUD OUT 11.3 / 93
7130	-7609 SURVEY
7140	-7618 MUD IN 11.5 / 65 pH IN 10.3 MUD OUT 11.4 / 88
7150	-7645 MUD IN 11.5 / 65 pH IN 10.2 MUD OUT 11.5 / 75
7160	-7700 SURVEY



7702 SURVEY

-7711 MUD IN 11.5 / 67 pH
IN 10.4 MUD OUT 11.5 / 83

-7771 MUD IN 11.5 / 67 pH
IN 10.4 MUD OUT 11.2 / 87

-7797 SURVEY

-7800 MUD IN 11.5 / 66 pH
IN 10.3 MUD OUT 11.3 / 79

-7852 MUD IN 11.6 / 65 pH
IN 10.3 MUD OUT 11.6 / 87

-7894 SURVEY

-7895 MUD IN 11.6 / 62 pH
IN 10.3 MUD OUT 11.5 / 83

-7958 MUD IN 11.6 / 66 pH
IN 10.2 MUD OUT 10.5 / 83
pH OUT 11.5

-7989 SURVEY

-8015 MUD IN 11.6 / 64 pH
IN 10.3 MUD OUT 11.3 / 91

-8047 MUD IN 11.7 / 63 pH
IN 10.2 MUD OUT 11.5 / 81

-8076 MUD IN 11.7 / 62 pH
IN 10.2 MUD OUT 11.5 / 85

-8084 RIG SERVICE

-8085 SURVEY

-8086 MUD IN 11.7 / 62 pH
IN 10.2 MUD OUT 11.5 / 75

-8134 MUD IN 11.7 / 61 pH
IN 10 MUD OUT 11.5 / 75

-8161 MUD IN 11.7 / 61 pH
IN 10.1 MUD OUT 11.5 / 77

-8179 SURVEY

-8196 TRANSFER OUT 25
BBLs

-8199 MUD IN 11.7 / 68 pH
IN 10.3 MUD OUT 11.5 / 88

-8254 MUD IN 11.6 / 64 pH
IN 10.2 MUD OUT 11.1 /
105

-8275 SURVEY

-8304 MUD IN 11.7 / 64 pH
IN 10.3 MUD OUT 11.2 / 81

-8366 MUD IN 11.8 / 62 pH
IN 10.1 MUD OUT 11.3 / 75

-8370 SURVEY

-8382 MUD IN 11.8 / 65 pH
IN 10.2 MUD OUT 11.6 / 75

-8438 MUD IN 11.8 / 64 pH
IN 10.3 MUD OUT 11.6 / 78

-8465 MUD IN 11.9 / 64 pH
IN 10.4 MUD OUT 11.8 / 83

-8465 SURVEY

-8513 MUD IN 11.9 / 67 pH
IN 10.2 MUD OUT 11.8 / 80

-8553 MUD IN 12 / 65 pH IN
10.3 MUD OUT 11.9 / 75

-8560 SURVEY

-8605 MUD IN 12 / 64 pH IN
10.2 MUD OUT 11.9 / 76

-8618 TRANSFER OUT 50
BBLs

-8655 MUD IN 11.9 / 63 pH
IN 10.1 MUD OUT 11.9 / 80

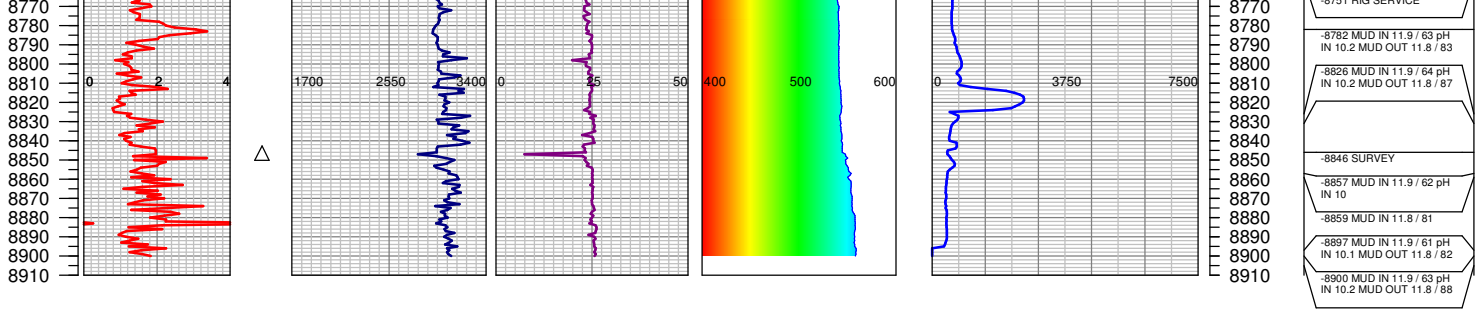
-8655 SURVEY

-8693 MUD IN 11.9 / 65 pH
IN 10.2 MUD OUT 11.5 / 94

-8751 MUD IN 11.9 / 64 pH
IN 10.2

-8751 SURVEY

-8761 RIG SERVICE



TOTAL DEPTH = 8900'

FGS RELEASED: 7/23/2014